

STATE OF ILLINOIS
DEPARTMENT OF TRANSPORTATION

PLANS FOR
PROPOSED LOCAL AGENCY IMPROVEMENT
FEDERAL-AID HIGHWAY PROJECT

FAU 6576 (KICKAPOO CREEK ROAD)
SECTION 09-00177-00-SP PEORIA COUNTY
PROJECT HSIP 5093 (151)

ROUTE NO.	SECTION	COUNTY	TOTAL SHEETS	SHEET NO.
FAU 6576	09-00177-00-SP	PEORIA	33	1
FED. ROAD DIST. NO. 7		ILLINOIS	PROJECT: HSIP 5093 (151)	
CONTRACT NO. 89561				

INDEX OF SHEETS

- 1 COVER SHEET
- 2 SUMMARY OF QUANTITIES / SIGN DETAILS
- 3-14 SCHEDULE OF QUANTITIES
- 15-32 GUARDRAIL AND NEW SIGN LOCATION PLAN
- 33 SOLAR POWERED FLASHING BEACON ASSEMBLY

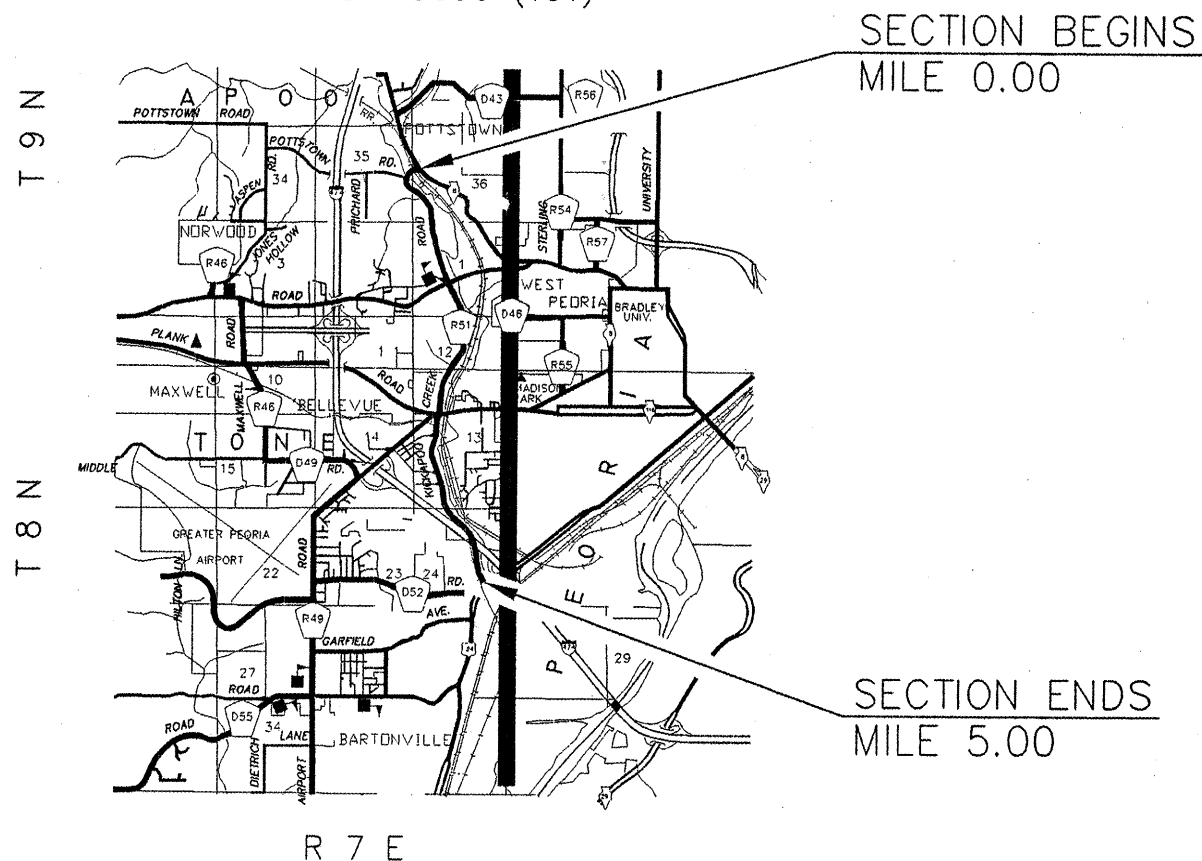
LIST OF STANDARDS

- | | |
|-----------|-----------|
| 630001-08 | 701306-02 |
| 630301-05 | 701901-01 |
| 631011-06 | 720001-01 |
| 635006-03 | 720006-02 |
| 635011-02 | 728001-01 |
| 701006-03 | BLR 23-3 |
| 701201-03 | |

DESCRIPTION OF WORK

THE WORK CONSISTS OF PLACING GUARDRAIL, SIGN PANELS, POSTS, AND SOLAR POWERED FLASHING BEACONS.

J.U.L.I.E.: 1-800-892-0123



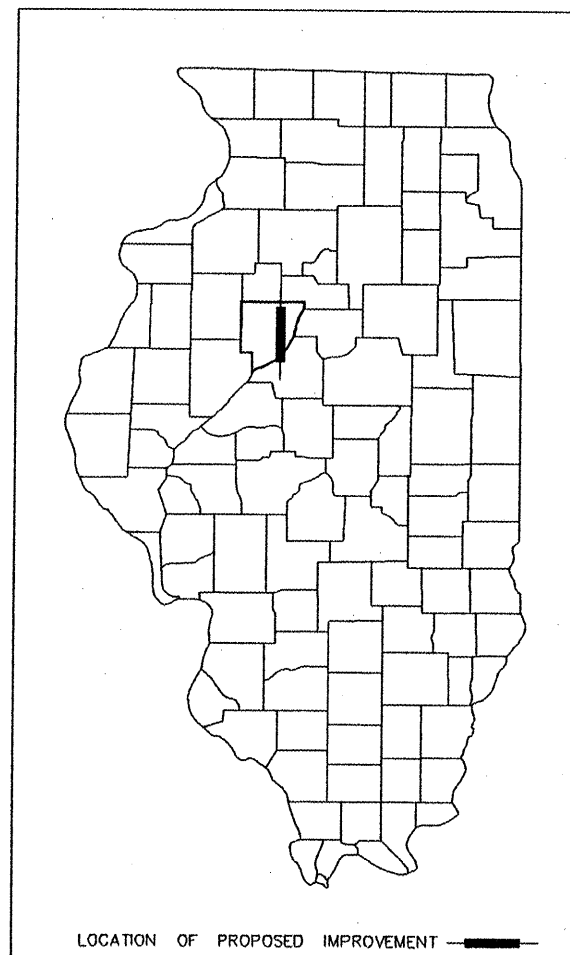
LOCATION MAP (NOT TO SCALE)

CURRENT ADT = 5,800

TOTAL AND NET LENGTH OF PROJECT = 5.0 MILES (26,400 FT)

THESE PLANS WERE PREPARED BY A FULL TIME MEMBER OF MY STAFF UNDER MY PERSONAL SUPERVISION.

Thomas J. McFarland
PEORIA COUNTY ENGINEER



LOCATION OF PROPOSED IMPROVEMENT

APPROVED	<i>Mark G. ...</i> 20 10
	<i>Thomas J. McFarland</i> COUNTY ENGINEER
PASSED	<i>3/16/10</i> 20 10
	DISTRICT ENGINEER OF LOCAL ROADS & STREETS
Releasing For Bid Based on Limited Review	<i>March 17, 2010</i> 20 10
	DEPUTY DIRECTOR OF HIGHWAYS, REGION THREE ENGINEER
STATE OF ILLINOIS DEPARTMENT OF TRANSPORTATION	

CONTRACT: 89561
JOB NO.: C-94-030-10

SCHEDULE OF QUANTITIES

ROUTE NO.	SECTION	COUNTY	TOTAL SHEETS	SHEET NO.
FAU 6576	09-00177-00-SP	PEORIA	33	3
FED. ROAD DIST. NO.		7 ILLINOIS	PROJECT: HSP 5093 (191)	
CONTRACT NO. 89561				

GUARDRAIL PAY ITEMS

LOCATION	SPB GUARDRAIL TY. A, 9' POST (FOOT)	SPB GUARDRAIL TY. B (FOOT)	TRAFFIC BARRIER TERMINAL, TY. 2 (EACH)	TRAFFIC BARRIER TERMINAL TY. 1 (SPECIAL) TANGENT (EACH)	SPB GUARDRAIL REMOVAL, TY. A (FOOT)	TRAFFIC BARRIER TERMINAL REMOVAL, TY. 1 (EACH)	TRAFFIC BARRIER TERMINAL REMOVAL, TY. BLR 19-1 (EACH)	MONO. GUARDRAIL REFLECTORS (EACH)	TERMINAL MARKER DIRECT APPLIED (EACH)	TRAFFIC BARRIER TERMINAL, TY. 1 (EACH)
STRUCTURE 072-3001 TO MILE 0.18	-	219	1	1	-	-	-	4	1	-
MILE 0.28 TO MILE 0.36	363	-	-	4	-	-	-	5	4	-
MILE 2.0 TO MILE 2.14	663	-	-	2	-	-	-	9	2	-
MILE 2.32 TO MILE 2.44	625	-	-	2	-	-	-	7	2	-
MILE 2.79 TO MILE 2.84	163	-	-	2	-	-	-	4	2	-
MILE 2.87 TO MILE 2.91	125	-	-	2	125	-	1	4	2	-
MILE 2.89 TO MILE 2.92	63	-	-	2	75	-	1	4	2	-
MILE 2.96 TO MILE 3.00	-	-	-	-	-	-	-	4	2	-
MILE 3.01 TO MILE 3.05	12.5	-	-	-	12.5	-	2	4	2	2
MILE 3.02 TO MILE 3.09	-	-	-	-	-	-	-	4	2	-
MILE 3.15 TO MILE 3.19	150	-	-	2	-	-	-	4	2	-
MILE 4.37 TO MILE 4.44	250	-	-	2	-	-	-	4	2	-
MILE 4.38 TO MILE 4.48	213	-	-	2	-	-	2	11	2	-
MILE 4.81 TO MILE 4.89	-	338	-	2	370	1	1	5	2	-
MILE 4.85 TO MILE 4.89	-	138	-	2	50	-	-	4	2	-
TOTALS =	2,628	695	1	25	633	1	7	77	31	2

NOTE: SHOULDER WIDENING FOR TRAFFIC BARRIER TERMINALS SHALL NOT BE PAID FOR SEPARATELY, BUT SHALL BE CONSIDERED TO BE INCLUDED IN THE COST OF THE VARIOUS TRAFFIC BARRIER TERMINAL PAY ITEMS.

BRIDGE RAIL (SPECIAL)

LOCATION	FOOT
MILE 3.01 TO MILE 3.05	13
TOTAL =	13

ROUTE NO.	SECTION	COUNTY	TOTAL SHEETS	SHEET NO.
FAU 6576	09-00177-00-SP	PEORIA	33	4
FED. ROAD DIST. NO.	7	ILLINOIS	PROJECT: HSP 9033 (151)	
CONTRACT NO. 89561				

SIGN PANEL AND POST QUANTITIES
KICKAPOO CREEK ROAD (R51), SECTION 09-00177-00-SP, CONTRACT 89561
 START 0.00 MILES @ IL 8 IN POTTSTOWN
 END 5.00 MILES @ TREASURE STREET IN BARTONVILLE

BOLD ITEMS SIGNIFY NEW SIGN LOCATIONS

SIGN NUMBER	MILES FROM		EXISTING MESSAGE	PROPOSED SIGN CODE	PROPOSED SIGN SIZE	PROPOSED MESSAGE	SIGN PANEL SQ. FT.	POST FOOT	SOLAR POWERED FLASHING BEACON
	START	END							
1	0	5	SCENIC HWY	D6-1 PC	24X36	SCENIC HWY	6.00	14	
2	0.01	4.99	N/A	W10-11	36X36	STORAGE SPACE SYMBOL	9.00	19	
3	0.01	4.99	60' BETWEEN	W10-11a	30X36	60' BETWEEN TRACKS & HIGHWAY	7.50		
4	0.01	4.99	NO STOP ON TRACKS	R8-8	24X30	DO NOT STOP ON TRACKS	5.00		
5	0.01	4.99	ILLINOIS 8	D3-1	30X9	ILLINOIS RT 8 4166W	1.88	14	
6	0.01	4.99	POTTSTOWN RD.	D3-1	30X9	POTTSTOWN ROAD 2406N	1.88		
7	0.01	4.99	N/A	W10-11	36X36	STORAGE SPACE SYMBOL	9.00	19	
8	0.01	4.99	60' BETWEEN	W10-11a	30X36	60' BETWEEN TRACKS & HIGHWAY	7.50		
9	0.01	4.99	NO STOP ON TRACKS	R8-8	24X30	DO NOT STOP ON TRACKS	5.00		
10	0.01	4.99	NO PASS ZONE	W14-3	36X48X48	NO PASS ZONE	5.60	16	
11	0.02	4.98	END	M4-6	24X12	END	2.00	14	
12	0.02	4.98	PEORIA CO R51	M1-6	24X24	PEORIA CO R51	4.00		
13	0.02	4.98	SOUTH	M3-3	24X12	SOUTH	2.00	14	
14	0.02	4.98	PEORIA CO R51	M1-6	24X24	PEORIA CO R51	4.00		
15	0.02	4.98	BEGIN	M4-GB	18X24	BEGIN	3.00		
16	0.02	4.98	NO CLASS 1-2-3	R5-1102	24X36	NO CLASS 1-2-3 TRUCK ACCESS	6.00	14	
17	0.03	4.97	SHARP LT. TURN	W1-1aL	36X36	SHARP LT. TURN 15	9.00	14	
18	0.05	4.95	PEORIA CO R51	M1-6	24X24	PEORIA CO R51	4.00	14	
19	0.05	4.95	ADVANCE LT. TURN	M5-1L	21X15	ADVANCE LT. TURN	2.20		
20	0.06	4.94	R X R	W10-1	36" DIA.	R X R	7.00	14	
21	0.06	4.94	// MARKER SYM	OM-3R	12X36	OBJECT MARKER	3.00	12	
22	0.06	4.94	\\ MARKER SYM	OM-3L	12X36	OBJECT MARKER	3.00	12	
23	0.07	4.95	\\ MARKER SYM	OM-3L	12X36	OBJECT MARKER	3.00	12	
24	0.07	4.95	// MARKER SYM	OM-3R	12X36	OBJECT MARKER	3.00	12	
25	0.11	4.89	STOP	R1-1	30X30	STOP	6.25	14	
26	0.11	4.89	<--> SYMBOL	W1-7	48X24	<--> SYMBOL	8.00	14	
27	0.12	4.88	STOP	R1-1	30X30	STOP	6.25	14	
28	0.12	4.88	POTTSTOWN RD.	D3-1	30X9	POTTSTOWN ROAD 2200N	1.88	14	
29	0.12	4.88	KICKAPOO CR ROAD	D3-1	30X9	KICKAPOO CREEK ROAD 4350N	1.88		
30	0.13	4.87	<--> SYMBOL	W1-7	48X24	<--> SYMBOL	8.00	14	
31	0.15	4.85	PEORIA CO R51	M1-6	24X24	PEORIA CO R51	4.00	14	
32	0.15	4.85	LEFT ARROW SYM	M6-1	21X15	LEFT ARROW SYM	2.20		
33	0.16	4.84	YIELD	R1-2	36X36X36	YIELD	3.90	14	
34	0.16	4.84	LEFT TURN	R1-2a	24X12	TO ONCOMING TRAFFIC	2.00		
35			N/A	W1-10	30X30	ENTRANCE ON CURVE	6.25	14	
36	0.17	4.83	ADOPT A HIGHWAY	I-1107	36X36	ADOPT A HIGHWAY	9.00	14	
37	0.17	4.83	CLEAN UP CREW	W21-111	36X36	CLEAN UP CREW	9.00		
38	0.19	4.81	SOUTH	M3-3	24X12	SOUTH	2.00	14	
39	0.19	4.81	PEORIA CO R51	M1-6	24X24	PEORIA CO R51	4.00		
40	0.2	4.8	SPEED LIMIT 45	R2-1	24X30	SPEED LIMIT 45	5.00	14	
41	0.24	4.65	PEORIA CO R51	M1-6	24X24	PEORIA CO R51	4.00	14	
42	0.24	4.76	ADVANCE RT. TURN	M5-1R	21X15	ADVANCE RT. TURN	2.20		
43	0.24	4.76	YIELD AHEAD	W3-2	36X36	YIELD AHEAD SYMBOL	9.00	14	
44	0.25	4.75	CHURCH ENTRANCE	W16-1101	30X30	CHURCH ENTRANCE	6.25	14	
45	0.32	4.57	NO PASS ZONE	W14-3	36X48X48	NO PASS ZONE	5.60	16	
46	0.32	4.57	CURVE RIGHT	W1-2aR	36X36	CURVE RIGHT 40	9.00	14	
47			N/A	W1-8R	18X24	CHEVRON RIGHT	3.00	14	

ROUTE NO.	SECTION	COUNTY	TOTAL SHEETS	SHEET NO.
FAU 6576	09-00177-00-SP	PEORIA	33	5
FED. ROAD DIST. NO.	7	ILLINOIS	PROJECT: HSP 5093 (151)	
CONTRACT NO. 89561				

SIGN PANEL AND POST QUANTITIES
KICKAPOO CREEK ROAD (R51), SECTION 09-00177-00-SP, CONTRACT 89561
 START 0.00 MILES @ IL 8 IN POTTSTOWN
 END 5.00 MILES @ TREASURE STREET IN BARTONVILLE

BOLD ITEMS SIGNIFY NEW SIGN LOCATIONS

SIGN NUMBER	MILES FROM START	END	EXISTING MESSAGE	PROPOSED SIGN CODE	PROPOSED SIGN SIZE	PROPOSED MESSAGE	SIGN PANEL SQ. FT.	POST FOOT	SOLAR POWERED FLASHING BEACON
48			N/A	W1-8L	18X24	CHEVRON LEFT	3.00	14	
49			N/A	R8-3	12X18	NO PARKING	1.50	14	
50			N/A	W1-8R	18X24	CHEVRON RIGHT	3.00	14	
51			N/A	W1-8L	18X24	CHEVRON LEFT	3.00	14	
52			N/A	W1-8R	18X24	CHEVRON RIGHT	3.00	14	
53			N/A	W1-8L	18X24	CHEVRON LEFT	3.00	14	
54			N/A	W1-8R	18X24	CHEVRON RIGHT	3.00	14	
55			N/A	W1-8L	18X24	CHEVRON LEFT	3.00	14	
56			N/A	W1-8R	18X24	CHEVRON RIGHT	3.00	14	
57			N/A	R8-3	12X18	NO PARKING	1.50	14	
58			N/A	W1-8L	18X24	CHEVRON LEFT	3.00	14	
59			N/A	W1-8R	18X24	CHEVRON RIGHT	3.00	14	
60			N/A	W1-8L	18X24	CHEVRON LEFT	3.00	14	
61			N/A	W1-8R	18X24	CHEVRON RIGHT	3.00	14	
62			N/A	W1-8L	18X24	CHEVRON LEFT	3.00	14	
63			N/A	W1-8R	18X24	CHEVRON RIGHT	3.00	14	
64			N/A	W1-8L	18X24	CHEVRON LEFT	3.00	14	
65			N/A	W1-8R	18X24	CHEVRON RIGHT	3.00	14	
66			N/A	W1-8L	18X24	CHEVRON LEFT	3.00	14	
67	0.43	4.57	SCH BUS STOP AHD	S3-1	30X30	SCH BUS STOP AHD	6.25	14	
68	0.48	4.52	OBJECT MARKER	OM2-2V	6X12	OBJECT MARKER	0.50	10	
69	0.61	4.39	CHURCH ENTRANCE	W16-I101	30X30	CHURCH ENTRANCE	6.25	14	
70	0.64	4.36	CURVE LEFT	W1-2aL	36x36	CURVE LEFT 40	9.00	14	
71	0.65	4.35	WINDING L-R-L-R	W1-5L	30X30	WINDING L-R-L-R	6.25	14	
72			N/A	W1-8R	18X24	CHEVRON RIGHT	3.00	14	
73			N/A	W1-8L	18X24	CHEVRON LEFT	3.00	14	
74			N/A	W1-8R	18X24	CHEVRON RIGHT	3.00	14	
75			N/A	W1-8L	18X24	CHEVRON LEFT	3.00	14	
76			N/A	W1-8R	18X24	CHEVRON RIGHT	3.00	14	
77			N/A	W1-8L	18X24	CHEVRON LEFT	3.00	14	
78			N/A	W1-8R	18X24	CHEVRON RIGHT	3.00	14	
79			N/A	W1-8L	18X24	CHEVRON LEFT	3.00	14	
80			N/A	W1-8R	18X24	CHEVRON RIGHT	3.00	14	
81			N/A	W1-8L	18X24	CHEVRON LEFT	3.00	14	
82			N/A	W1-8R	18X24	CHEVRON RIGHT	3.00	14	
83			N/A	W1-8L	18X24	CHEVRON LEFT	3.00	14	
84	0.66	4.34	ADOPT A HIGHWAY	I-107	36x36	ADOPT A HIGHWAY	9.00	14	
85	0.66	4.34	CLEAN UP CREW	W21-I11	36x36	CLEAN UP CREW	9.00	14	
86	0.7	4.3	SCH BUS STOP AHD	S3-1	30X30	SCH BUS STOP AHD	6.25	14	
87	0.76	4.24	SPEED LIMIT 45	R2-1	24X30	SPEED LIMIT 45	5.00	14	
88	0.78	4.22	ADOPT A HIGHWAY	I-107	36x36	ADOPT A HIGHWAY	9.00	14	
89	0.78	4.22	CLEAN UP CREW	W21-I11	36x36	CLEAN UP CREW	9.00	14	
90	0.86	4.14	OBJECT MARKER	OM2-2V	6X12	OBJECT MARKER	0.50	10	
91	0.96	4.24	OBJECT MARKER	OM2-2V	6X12	OBJECT MARKER	0.50	10	
92	1.14	3.75	NO PASS ZONE	W14-3	36X48X48	NO PASS ZONE	5.60	16	
93	1.23	3.77	STOP AHEAD	W3-1	36X36	STOP AHEAD SYMBOL	9.00	15	INSTALL YELLOW FLASHER
94			N/A	W3-1	36X36	STOP AHEAD SYMBOL	9.00	15	INSTALL YELLOW FLASHER

ROUTE NO.	SECTION	COUNTY	TOTAL SHEETS	SHEET NO.
FAU 6576	09-00177-00-SP	PEORIA	33	6
FED. ROAD DIST. NO. 7		ILLINOIS PROJECT: HSP 5093 (151)		
CONTRACT NO. 89561				

SIGN PANEL AND POST QUANTITIES
KICKAPOO CREEK ROAD (R51), SECTION 09-00177-00-SP, CONTRACT 89561
 START 0.00 MILES @ IL 8 IN POTTSTOWN
 END 5.00 MILES @ TREASURE STREET IN BARTONVILLE

BOLD ITEMS SIGNIFY NEW SIGN LOCATIONS

SIGN NUMBER	MILES FROM		EXISTING MESSAGE	PROPOSED SIGN CODE	PROPOSED SIGN SIZE	PROPOSED MESSAGE	SIGN PANEL SQ. FT.	POST FOOT	SOLAR POWERED FLASHING BEACON
	START	END							
95			N/A	OM-3R	12X36	OBJECT MARKER	3.00	12	
96	1.27	3.73	ADOPT A HIGHWAY	I-1107	36x36	ADOPT A HIGHWAY	9.00	14	
97	1.27	3.73	CLEAN UP CREW	W21-111	36x36	CLEAN UP CREW	9.00	14	
98	1.28	3.72	SPEED LIMIT 45	R2-1	24X30	SPEED LIMIT 45	5.00	14	
99	1.34	3.66	NORTH	M3-1	24X12	NORTH	2.00	14	
100	1.34	3.66	PEORIA CO R51	M1-6	24X24	PEORIA CO R51	4.00	14	
101	1.35	3.65	WINDING L-R-L-R	W1-5L	30X30	WINDING L-R-L-R	6.25	14	
102	1.35	3.54	NO PASS ZONE	W14-3	36X48X48	NO PASS ZONE	5.60	16	
103	1.35	3.65	SCENIC HWY	D6-1 PC	24X36	SCENIC HWY	6.00	14	
104	1.37	3.63	FARMINGTON ROAD	D3-1	30x9	FARMINGTON ROAD 1130N	1.88	14	
105	1.37	3.63	KICKAPOO CR ROAD	D3-1	30x9	KICKAPOO CREEK ROAD 3870W	1.88	14	
106	1.37	3.63	NO CLASS 1-2-3	R5-1102	24X36	NO CLASS 1-2-3 TRUCK ACCESS	6.00	14	
107	1.38	3.62	// MARKER SYM	OM-3R	12X36	OBJECT MARKER	3.00	12	
108	1.39	3.61	// MARKER SYM	OM-3R	12X36	OBJECT MARKER	3.00	12	
109	1.39	3.5	NO PASS ZONE	W14-3	36X48X48	NO PASS ZONE	5.60	16	
110	1.41	3.59	SOUTH	M3-3	24X12	SOUTH	2.00	14	
111	1.41	3.59	PEORIA CO R51	M1-6	24X24	PEORIA CO R51	4.00	14	
112	1.43	3.57	SPEED LIMIT 45	R2-1	24X30	SPEED LIMIT 45	5.00	14	
113	1.43	3.57	RT LN MUST TURN	R3-7R	30X30	RIGHT LANE MUST TURN RIGHT	6.25	14	
114	1.45	3.55	SCENIC HWY	D6-1 PC	24X36	SCENIC HWY	6.00	14	
115	1.49	3.51	STOP AHEAD	W3-1	36X36	STOP AHEAD SYMBOL	9.00	15	INSTALL YELLOW FLASHER
116			N/A	W3-1	36X36	STOP AHEAD SYMBOL	9.00	15	INSTALL YELLOW FLASHER
117	1.7	3.19	NO PASS ZONE	W14-3	36X48X48	NO PASS ZONE	5.60	16	
118	1.92	2.97	NO PASS ZONE	W14-3	36X48X48	NO PASS ZONE	5.60	16	
119	1.96	3.04	CURVE RIGHT	W1-2aR	36X36	CURVE RIGHT 35	9.00	14	
120			N/A	W1-8R	18X24	CHEVRON RIGHT	3.00	14	
121			N/A	W1-8L	18X24	CHEVRON LEFT	3.00	14	
122			N/A	W1-8R	18X24	CHEVRON RIGHT	3.00	14	
123			N/A	W1-8L	18X24	CHEVRON LEFT	3.00	14	
124			N/A	W1-8R	18X24	CHEVRON RIGHT	3.00	14	
125			N/A	W1-8L	18X24	CHEVRON LEFT	3.00	14	
126			N/A	W1-8R	18X24	CHEVRON RIGHT	3.00	14	
127			N/A	W1-8L	18X24	CHEVRON LEFT	3.00	14	
128			N/A	W1-8R	18X24	CHEVRON RIGHT	3.00	14	
129			N/A	W1-8L	18X24	CHEVRON LEFT	3.00	14	
130			N/A	W1-8R	18X24	CHEVRON RIGHT	3.00	14	
131			N/A	W1-8L	18X24	CHEVRON LEFT	3.00	14	
132			N/A	W1-8R	18X24	CHEVRON RIGHT	3.00	14	
133			N/A	W1-8L	18X24	CHEVRON LEFT	3.00	14	
134			N/A	W1-8R	18X24	CHEVRON RIGHT	3.00	14	
135			N/A	W1-8L	18X24	CHEVRON LEFT	3.00	14	
136			N/A	W1-8R	18X24	CHEVRON RIGHT	3.00	14	
137			N/A	W1-8L	18X24	CHEVRON LEFT	3.00	14	
138			N/A	W1-8R	18X24	CHEVRON RIGHT	3.00	14	
139			N/A	W1-8L	18X24	CHEVRON LEFT	3.00	14	
140	2.03	2.97	SPEED LIMIT 45	R2-1	24X30	SPEED LIMIT 45	5.00	14	
141	2.27	2.73	CURVE LEFT	W1-2aL	36x36	CURVE LEFT 35	9.00	14	

ROUTE NO.	SECTION	COUNTY	TOTAL SHEETS	SHEET NO.
FAU 6576	09-00177-00-SP	PEORIA	33	7
FED. ROAD DIST. NO. 7		ILLINOIS	PROJECT: HSP 6093 (151)	
CONTRACT NO. 89561				

SIGN PANEL AND POST QUANTITIES
KICKAPOO CREEK ROAD (R51), SECTION 09-00177-00-SP, CONTRACT 89561
 START 0.00 MILES @ IL 8 IN POTTSTOWN
 END 5.00 MILES @ TREASURE STREET IN BARTONVILLE

BOLD ITEMS SIGNIFY NEW SIGN LOCATIONS

SIGN NUMBER	MILES FROM		EXISTING MESSAGE	PROPOSED SIGN CODE	PROPOSED SIGN SIZE	PROPOSED MESSAGE	SIGN PANEL SQ. FT.	POST FOOT	SOLAR POWERED FLASHING BEACON
	START	END							
142			N/A	W1-8R	18X24	CHEVRON RIGHT	3.00	14	
143			N/A	W1-8L	18X24	CHEVRON LEFT	3.00	14	
144			N/A	OM-3R	12X36	OBJECT MARKER	3.00	12	
145			N/A	W1-8R	18X24	CHEVRON RIGHT	3.00	14	
146			N/A	W1-8L	18X24	CHEVRON LEFT	3.00	14	
147			N/A	W1-8R	18X24	CHEVRON RIGHT	3.00	14	
148			N/A	W1-8L	18X24	CHEVRON LEFT	3.00	14	
149			N/A	W1-8R	18X24	CHEVRON RIGHT	3.00	14	
150			N/A	W1-8L	18X24	CHEVRON LEFT	3.00	14	
151			N/A	W1-8R	18X24	CHEVRON RIGHT	3.00	14	
152			N/A	W1-8L	18X24	CHEVRON LEFT	3.00	14	
153			N/A	W1-8R	18X24	CHEVRON RIGHT	3.00	14	
154			N/A	W1-8L	18X24	CHEVRON LEFT	3.00	14	
155			N/A	W1-8R	18X24	CHEVRON RIGHT	3.00	14	
156			N/A	W1-8L	18X24	CHEVRON LEFT	3.00	14	
157			N/A	W1-8R	18X24	CHEVRON RIGHT	3.00	14	
158			N/A	W1-8L	18X24	CHEVRON LEFT	3.00	14	
159			N/A	W1-8R	18X24	CHEVRON RIGHT	3.00	14	
160			N/A	W1-8L	18X24	CHEVRON LEFT	3.00	14	
161			N/A	W1-8R	18X24	CHEVRON RIGHT	3.00	14	
162			N/A	W1-8L	18X24	CHEVRON LEFT	3.00	14	
163			N/A	W1-8R	18X24	CHEVRON RIGHT	3.00	14	
164			N/A	W1-8L	18X24	CHEVRON LEFT	3.00	14	
165			N/A	W1-8R	18X24	CHEVRON RIGHT	3.00	14	
166			N/A	W1-8L	18X24	CHEVRON LEFT	3.00	14	
167			N/A	W1-8R	18X24	CHEVRON RIGHT	3.00	14	
168			N/A	W1-8L	18X24	CHEVRON LEFT	3.00	14	
169			N/A	W1-8R	18X24	CHEVRON RIGHT	3.00	14	
170			N/A	W1-8L	18X24	CHEVRON LEFT	3.00	14	
171			N/A	W1-8R	18X24	CHEVRON RIGHT	3.00	14	
172			N/A	W1-8L	18X24	CHEVRON LEFT	3.00	14	
173			N/A	W1-8R	18X24	CHEVRON RIGHT	3.00	14	
174			N/A	W1-8L	18X24	CHEVRON LEFT	3.00	14	
175			N/A	W1-8R	18X24	CHEVRON RIGHT	3.00	14	
176			N/A	W1-8L	18X24	CHEVRON LEFT	3.00	14	
177	2.27	2.63	CURVE LEFT	W1-2aL	36X36	CURVE LEFT 35	9.00	14	
178	2.32	2.68	SPEED LIMIT 45	R2-1	24X30	SPEED LIMIT 45	5.00	14	
179	2.33	2.67	SPEED LIMIT 45	R2-1	24X30	SPEED LIMIT 45	5.00	14	
180	2.5	2.5	OBJECT MARKER	OM2-2V	6X12	OBJECT MARKER	0.50	10	
181	2.53	2.47	SHARP RT. TURN	W1-1aR	36X36	SHARP RT. TURN 35	9.00	14	
182	2.56	2.44	OBJECT MARKER	OM2-2V	6X12	OBJECT MARKER	0.50	10	
183	2.56	2.44	OBJECT MARKER	OM2-2V	6X12	OBJECT MARKER	0.50	10	
184	2.65	2.35	OBJECT MARKER	OM2-2V	6X12	OBJECT MARKER	0.50	10	
185	2.65	2.35	OBJECT MARKER	OM2-2V	6X12	OBJECT MARKER	0.50	10	
186	2.67	2.33	SPEED LIMIT 45	R2-1	24X30	SPEED LIMIT 45	5.00	14	
187	2.76	2.24	SIDE RD RIGHT SYM	W2-2	30X30	INTERSECTION AHEAD	6.25	14	
188			N/A	W3-1	36X36	STOP AHEAD SYMBOL	9.00	15	INSTALL YELLOW FLASHER

ROUTE NO.	SECTION	COUNTY	TOTAL SHEETS	SHEET NO.
FAU 6576	09-00177-00-SP	PEORIA	33	8
FED. ROAD DIST. NO.	7	ILLINOIS	PROJECT: HSP 5093 (151)	
CONTRACT NO. 89561				

SIGN PANEL AND POST QUANTITIES
KICKAPOO CREEK ROAD (R51), SECTION 09-00177-00-SP, CONTRACT 89561
 START 0.00 MILES @ IL 8 IN POTTSTOWN
 END 5.00 MILES @ TREASURE STREET IN BARTONVILLE

BOLD ITEMS SIGNIFY NEW SIGN LOCATIONS

SIGN NUMBER	MILES FROM		EXISTING MESSAGE	PROPOSED SIGN CODE	PROPOSED SIGN SIZE	PROPOSED MESSAGE	SIGN PANEL SQ. FT.	POST FOOT	SOLAR POWERED FLASHING BEACON
	START	END							
189			N/A	W3-1	36X36	STOP AHEAD SYMBOL	9.00	15	INSTALL YELLOW FLASHER
190	2.79	2.21	SCENIC HWY	D6-1 PC	24X36	SCENIC HWY	6.00	14	
191	2.79	2.21	NORTH	M3-1	24X12	NORTH	2.00	14	
192	2.79	2.21	PEORIA CO R51	M1-6	24X24	PEORIA CO R51	4.00		
193	2.8	2.2	STOP	R1-1	30X30	STOP	6.25	15	INSTALL RED FLASHER
194	2.8	2.2	ALL WAYS	R1-4	18X6	ALL WAY	0.75		
195			N/A	R1-1	30X30	STOP	6.25	15	INSTALL RED FLASHER
196			N/A	R1-4	18X6	ALL WAY	0.75		
197	2.81	2.19	AIRPORT SYMBOL	I-5	24X24	AIRPORT SYMBOL	4.00	16	
198	2.81	2.19	RT ARROW SYMBOL	M6-1	21X15	RT ARROW SYMBOL	2.20		
199	2.81	2.19	ILLINOIS 116	M1-I100	30X24	ILLINOIS 116	5.00		
200	2.81	2.19	RT ARROW SYMBOL	M6-1	21X15	RT ARROW SYMBOL	2.20		
201	2.82	2.18	HARMAN HWY	D3-1	30X9	HARMAN HIGHWAY 680S	1.88	14	
202	2.82	2.18	KICKAPOO CR ROAD	D3-1	30X9	KICKAPOO CREEK ROAD 4000W	1.88		
203	2.83	2.17	STOP	R1-1	30X30	STOP	6.25	15	INSTALL RED FLASHER
204	2.83	2.17	ALL WAYS	R1-4	18X6	ALL WAY	0.75		
205	2.83	2.17	STOP	R1-1	30X30	STOP	6.25	15	INSTALL RED FLASHER
206	2.83	2.17	ALL WAYS	R1-4	18X6	ALL WAY	0.75		
207	2.83	2.17	<-> SYMBOL	W1-7	48X24	<-> SYMBOL	8.00	14	
208	2.84	2.16	AIRPORT SYMBOL	I-5	24X24	AIRPORT SYMBOL	4.00	16	
209	2.84	2.16	LEFT ARROW SYM	M6-1	21X15	LT ARROW SYMBOL	2.20		
210	2.84	2.16	ILLINOIS 116	M1-I100	30X24	ILLINOIS 116	5.00		
211	2.84	2.16	LEFT ARROW SYM	M6-1	21X15	LT ARROW SYMBOL	2.20		
212	2.84	2.16	STOP	R1-1	30X30	STOP	6.25	15	INSTALL RED FLASHER
213	2.84	2.16	ALL WAYS	R1-4	18X6	ALL WAY	0.75		
214	2.84	2.16	NO CLASS 1-2-3	R5-I102	24X36	NO CLASS 1-2-3 TRUCK ACCESS	6.00	14	
215	2.85	2.15	LOW CLEAR 12'-0"	W12-2	36X36	12'-0"	9.00	15	
216	2.85	2.15	1 MILE AHEAD	W16-3	24X24	1 MILE	4.00		
217	2.85	2.15	STOP	R1-1	30X30	STOP	6.25	15	INSTALL RED FLASHER
218	2.85	2.15	ALL WAYS	R1-4	18X6	ALL WAY	0.75		
219	2.85	2.15	SCENIC HWY	D6-1 PC	24X36	SCENIC HWY	6.00	14	
220	2.86	2.14	CURVE LEFT	W1-2aL	36X36	CURVE LEFT 30	9.00	14	
221	2.86	2.14	SOUTH	M3-3	24X12	SOUTH	2.00	14	
222	2.86	2.14	PEORIA CO R51	M1-6	24X24	PEORIA CO R51	4.00		
223	2.94	2.06	TRUCK X-ING SYM	W11-10	30X30	TRUCK CROSSING SYMBOL	6.25	14	
224			N/A	W3-1	36X36	STOP AHEAD SYMBOL	9.00	15	INSTALL YELLOW FLASHER
225	2.94	2.06	\$200 FINE: TRASH	R15-I100	24X24	PENALTY FOR DUMPING ON PUBLIC HWY	4.00	14	
226			N/A	OM-3R	12X36	OBJECT MARKER	3.00	12	
227	2.96	2.04	SPEED LIMIT 40	R2-1	24X30	SPEED LIMIT 40	5.00	14	
228	2.98	2.02	FALLING ROCK	W8-1 PC	30X30	FALLING ROCK	6.25	14	
229	2.98	2.02	NEXT 1 MILE	W7-3a	24X18	NEXT 1 MILE	3.00		
230			N/A	OM-3R	12X36	OBJECT MARKER	3.00	12	
231	3.01	1.99	R X R	W10-1	36" DIA.	R X R	7.00	14	
232	3.01	1.99	EXEMPT	W10-1a	24X12	EXEMPT	2.00		
233			N/A	OM-3R	12X36	OBJECT MARKER	3.00	12	
234			N/A	OM-3R	12X36	OBJECT MARKER	3.00	12	
235			N/A	OM-3R	12X36	OBJECT MARKER	3.00	12	

ROUTE NO.	SECTION	COUNTY	TOTAL SHEETS	SHEET NO.
FAU 6576	09-00177-00-SP	PEORIA	33	9
FED. ROAD DIST. NO.	7	ILLINOIS	PROJECT: HSP 5093 (151)	
CONTRACT NO. 89561				

SIGN PANEL AND POST QUANTITIES
KICKAPOO CREEK ROAD (R51), SECTION 09-00177-00-SP, CONTRACT 89561
 START 0.00 MILES @ IL 8 IN POTTSTOWN
 END 5.00 MILES @ TREASURE STREET IN BARTONVILLE

BOLD ITEMS SIGNIFY NEW SIGN LOCATIONS

SIGN NUMBER	MILES FROM		EXISTING MESSAGE	PROPOSED SIGN CODE	PROPOSED SIGN SIZE	PROPOSED MESSAGE	SIGN PANEL SQ. FT.	POST FOOT	SOLAR POWERED FLASHING BEACON
	START	END							
236	3.16	1.84	R X R	W10-1	36" DIA.	R X R	7.00	14	
237	3.16	1.84	EXEMPT	W10-1a	24X12	EXEMPT	2.00		
238	3.07	1.93	SHARP RT. TURN	W1-1aR	36X36	SHARP RT. TURN 15	9.00	14	
239	3.12	1.88	SPEED LIMIT 40	R2-1	24X30	SPEED LIMIT 40	5.00	14	
240	3.13	1.87	OBJECT MARKER	OM2-2V	6X12	OBJECT MARKER	0.50	10	
241			N/A	W1-8R	18X24	CHEVRON RIGHT	3.00	14	
242			N/A	W1-8L	18X24	CHEVRON LEFT	3.00	14	
243			N/A	W1-8R	18X24	CHEVRON RIGHT	3.00	14	
244			N/A	W1-8L	18X24	CHEVRON LEFT	3.00	14	
245			N/A	W1-8R	18X24	CHEVRON RIGHT	3.00	14	
246			N/A	W1-8L	18X24	CHEVRON LEFT	3.00	14	
247			N/A	W1-8R	18X24	CHEVRON RIGHT	3.00	14	
248			N/A	W1-8L	18X24	CHEVRON LEFT	3.00	14	
249	3.14	1.86	← ARROW SYMBOL	W1-6	48X24	← ARROW SYMBOL	8.00	14	
250	3.15	1.85	→ ARROW SYMBOL	W1-6	48X24	→ ARROW SYMBOL	8.00	14	
251			N/A	W1-8R	18X24	CHEVRON RIGHT	3.00	14	
252			N/A	W1-8L	18X24	CHEVRON LEFT	3.00	14	
253			N/A	W1-8R	18X24	CHEVRON RIGHT	3.00	14	
254			N/A	W1-8L	18X24	CHEVRON LEFT	3.00	14	
255			N/A	W1-8R	18X24	CHEVRON RIGHT	3.00	14	
256			N/A	W1-8L	18X24	CHEVRON LEFT	3.00	14	
257			N/A	W1-8R	18X24	CHEVRON RIGHT	3.00	14	
258			N/A	W1-8L	18X24	CHEVRON LEFT	3.00	14	
259			N/A	W1-8R	18X24	CHEVRON RIGHT	3.00	14	
260			N/A	W1-8L	18X24	CHEVRON LEFT	3.00	14	
261			N/A	W1-8R	18X24	CHEVRON RIGHT	3.00	14	
262			N/A	W1-8L	18X24	CHEVRON LEFT	3.00	14	
263			N/A	W1-8R	18X24	CHEVRON RIGHT	3.00	14	
264			N/A	W1-8L	18X24	CHEVRON LEFT	3.00	14	
265			N/A	W1-8R	18X24	CHEVRON RIGHT	3.00	14	
266			N/A	W1-8L	18X24	CHEVRON LEFT	3.00	14	
267			N/A	W1-8R	18X24	CHEVRON RIGHT	3.00	14	
268			N/A	W1-8L	18X24	CHEVRON LEFT	3.00	14	
269			N/A	W1-8R	18X24	CHEVRON RIGHT	3.00	14	
270			N/A	W1-8L	18X24	CHEVRON LEFT	3.00	14	
271			N/A	W1-8R	18X24	CHEVRON RIGHT	3.00	14	
272			N/A	W1-8L	18X24	CHEVRON LEFT	3.00	14	
273			N/A	W1-8R	18X24	CHEVRON RIGHT	3.00	14	
274			N/A	W1-8L	18X24	CHEVRON LEFT	3.00	14	
275			N/A	W1-8R	18X24	CHEVRON RIGHT	3.00	14	
276			N/A	W1-8L	18X24	CHEVRON LEFT	3.00	14	
277			N/A	W1-8R	18X24	CHEVRON RIGHT	3.00	14	
278			N/A	W1-8L	18X24	CHEVRON LEFT	3.00	14	
279			N/A	W1-8R	18X24	CHEVRON RIGHT	3.00	14	
280			N/A	W1-8L	18X24	CHEVRON LEFT	3.00	14	
281			N/A	W1-8R	18X24	CHEVRON RIGHT	3.00	14	
282			N/A	W1-8L	18X24	CHEVRON LEFT	3.00	14	

ROUTE NO.	SECTION	COUNTY	TOTAL SHEETS	SHEET NO.
FAU 6576	09-00177-00-SP	PEORIA	33	10
FED. ROAD DIST. NO.	7	ILLINOIS	PROJECT: HSP 5093 (191)	
CONTRACT NO. 89561				

SIGN PANEL AND POST QUANTITIES
KICKAPOO CREEK ROAD (R51), SECTION 09-00177-00-SP, CONTRACT 89561
 START 0.00 MILES @ IL 8 IN POTTSTOWN
 END 5.00 MILES @ TREASURE STREET IN BARTONVILLE

BOLD ITEMS SIGNIFY NEW SIGN LOCATIONS

SIGN NUMBER	MILES FROM		EXISTING MESSAGE	PROPOSED SIGN CODE	PROPOSED SIGN SIZE	PROPOSED MESSAGE	SIGN PANEL SQ. FT.	POST FOOT	SOLAR POWERED FLASHING BEACON
	START	END							
283			N/A	W1-8R	18X24	CHEVRON RIGHT	3.00	14	
284			N/A	W1-8L	18X24	CHEVRON LEFT	3.00	14	
285	3.19	1.81	CURVE LEFT	W1-2aL	36X36	CURVE LEFT 35	9.00	14	
286	3.23	1.77	SHARP LT. TURN	W1-1aL	36X36	SHARP LT. TURN 15	9.00	14	
287	3.46	1.43	NO PASS ZONE	W14-3	36X48X48	NO PASS ZONE	5.60	16	
288	3.47	1.53	CURVE RIGHT	W1-2aR	36X36	CURVE RIGHT 35	9.00	14	
289			N/A	W2-2	30X30	INTERSECTION AHEAD	6.25	14	
290			N/A	W16-8	24X12	MIDDLE RD	2.00		
291			N/A	W1-8R	18X24	CHEVRON RIGHT	3.00	14	
292			N/A	W1-8L	18X24	CHEVRON LEFT	3.00	14	
293			N/A	W1-8R	18X24	CHEVRON RIGHT	3.00	14	
294			N/A	W1-8L	18X24	CHEVRON LEFT	3.00	14	
295			N/A	W1-8R	18X24	CHEVRON RIGHT	3.00	14	
296			N/A	W1-8L	18X24	CHEVRON LEFT	3.00	14	
297			N/A	W1-8R	18X24	CHEVRON RIGHT	3.00	14	
298			N/A	W1-8L	18X24	CHEVRON LEFT	3.00	14	
299			N/A	W1-8R	18X24	CHEVRON RIGHT	3.00	14	
300			N/A	W1-8L	18X24	CHEVRON LEFT	3.00	14	
301	3.6	1.4	SCENIC HWY	D6-1 PC	24X36	SCENIC HWY	6.00	14	
302	3.64	1.36	MIDDLE ROAD	D3-1	30X9	MIDDLE ROAD 1458S	1.88	14	
303	3.64	1.36	KICKAPOO CR ROAD	D3-1	30X9	KICKAPOO CREEK ROAD 3858W	1.88		
304	3.65	1.35	STOP	R1-1	30X30	STOP	6.25	14	
305	3.7	1.3	SCENIC HWY	D6-1 PC	24X36	SCENIC HWY	6.00	14	
306			N/A	OM-3R	12X36	OBJECT MARKER	3.00	12	
307			N/A	W2-2	30X30	INTERSECTION AHEAD	6.25	14	
308			N/A	W16-8	24X18	HARP HOLLOW ROAD	3.00		
309			N/A	W2-2	30X30	INTERSECTION AHEAD	6.25	14	
310			N/A	W16-8	24X12	MIDDLE ROAD	2.00		
311	3.72	1.28	STOP	R1-1	30X30	STOP	6.25	14	
312	3.72	1.28	HARP HOLLOW ROAD	D3-1	30X9	HARP HOLLOW ROAD 1526S	1.88	14	
313	3.72	1.28	KICKAPOO CR ROAD	D3-1	30X9	KICKAPOO CREEK ROAD 3920W	1.88		
314			N/A	OM-3R	12X36	OBJECT MARKER	3.00	12	
315	3.74	1.15	NO PASS ZONE	W14-3	36X48X48	NO PASS ZONE	5.60	16	
316	3.74	1.15	12'-0" VERT. CLEAR	W12-2	36X36	12'-0"	9.00	16	
317	3.74	1.15	1/2 MILE AHD	W16-3	24X24	1/2 MILE	4.00		
318	3.76	1.24	WINDING L-R-L-R	W1-5L	30X30	WINDING L-R-L-R	6.25	14	
319			N/A	OM-3R	12X36	OBJECT MARKER	3.00	12	
320			N/A	W2-2	30X30	INTERSECTION AHEAD	6.25	14	
321			N/A	W16-8	24X12	HARP HOLLOW ROAD	2.00		
322	3.78	1.22	OBJECT MARKER	OM2-2V	6X12	OBJECT MARKER	0.50	10	
323	3.78	1.22	OBJECT MARKER	OM2-2V	6X12	OBJECT MARKER	0.50	10	
324	3.81	1.08	NO PASS ZONE	W14-3	36X48X48	NO PASS ZONE	5.60	16	
325			N/A	W1-8R	18X24	CHEVRON RIGHT	3.00	14	
326			N/A	W1-8L	18X24	CHEVRON LEFT	3.00	14	
327			N/A	W1-8R	18X24	CHEVRON RIGHT	3.00	14	
328			N/A	W1-8L	18X24	CHEVRON LEFT	3.00	14	
329			N/A	W1-8R	18X24	CHEVRON RIGHT	3.00	14	

ROUTE NO.	SECTION	COUNTY	TOTAL SHEETS	SHEET NO.
FAU 6576	09-00177-00-SP	PEORIA	33	11
FED. ROAD DIST. NO.	7	ILLINOIS	PROJECT: HSP 9093 (151)	
CONTRACT NO. 89561				

SIGN PANEL AND POST QUANTITIES
KICKAPOO CREEK ROAD (R51), SECTION 09-00177-00-SP, CONTRACT 89561
 START 0.00 MILES @ IL 8 IN POTTSTOWN
 END 5.00 MILES @ TREASURE STREET IN BARTONVILLE

BOLD ITEMS SIGNIFY NEW SIGN LOCATIONS

SIGN NUMBER	MILES FROM		EXISTING MESSAGE	PROPOSED SIGN CODE	PROPOSED SIGN SIZE	PROPOSED MESSAGE	SIGN PANEL SQ. FT.	POST FOOT	SOLAR POWERED FLASHING BEACON
	START	END							
330			N/A	W1-8L	18X24	CHEVRON LEFT	3.00	14	
331			N/A	OM-3R	12X36	OBJECT MARKER	3.00	12	
332			N/A	W1-8R	18X24	CHEVRON RIGHT	3.00	14	
333			N/A	W1-8L	18X24	CHEVRON LEFT	3.00	14	
334			N/A	W1-8R	18X24	CHEVRON RIGHT	3.00	14	
335			N/A	W1-8L	18X24	CHEVRON LEFT	3.00	14	
336			N/A	OM-3R	12X36	OBJECT MARKER	3.00	12	
337			N/A	W1-8R	18X24	CHEVRON RIGHT	3.00	14	
338			N/A	W1-8L	18X24	CHEVRON LEFT	3.00	14	
339			N/A	OM-3R	12X36	OBJECT MARKER	3.00	12	
340	3.93	1.07	SPEED LIMIT 40	R2-1	24X30	SPEED LIMIT 40	5.00	14	
341	3.99	1.01	\$200 FINE: TRASH	R15-1100	24X24	PENALTY FOR DUMPING ON PUBLIC HWY	4.00	14	
342	4.04	0.96	SPEED LIMIT 40	R2-1	24X30	SPEED LIMIT 40	5.00	14	
343	4.12	0.88	DIVIDED HIGHWAY	W6-1	36X36	DIVIDED HIGHWAY SYMBOL	9.00	16	
344	4.12	0.88	CENTER PIER	W16-10 PC	24X24	CENTER PIER	4.00		
345	4.13	0.87	FALLING ROCK	W8-1 PC	30X30	FALLING ROCK	6.25	14	
346	4.13	0.87	NEXT 1 MILE	W7-3a	24X18	NEXT 1 MILE	3.00		
347			N/A	OM-3R	12X36	OBJECT MARKER	3.00	12	
348	4.16	0.84	OBJECT MARKER	OM2-2V	6X12	OBJECT MARKER	0.50	10	
349			N/A	W5-1	36X36	ROAD NARROWS	9.00	14	
350			N/A	N/A		N/A			
351			N/A	N/A		N/A			
352			N/A	N/A		N/A			
353			N/A	N/A		N/A			
354			N/A	N/A		N/A			
355			N/A	N/A		N/A			
356			N/A	N/A		N/A			
357			N/A	N/A		N/A			
358			N/A	N/A		N/A			
359			N/A	N/A		N/A			
360			N/A	N/A		N/A			
361			N/A	N/A		N/A			
362			N/A	N/A		N/A			
363	4.3	0.7	12'-0" VERT. CLEAR	W12-2	36x36	12'-0"	9.00	14	
364			N/A	W1-8R	18X24	CHEVRON LEFT	3.00	14	
365			N/A	W1-8L	18X24	CHEVRON LEFT	3.00	14	
366			N/A	W5-1	36X36	ROAD NARROWS	9.00	14	
367			N/A	W1-8R	18X24	CHEVRON LEFT	3.00	14	
368			N/A	W1-8L	18X24	CHEVRON LEFT	3.00	14	
369			N/A	W1-8R	18X24	CHEVRON LEFT	3.00	14	
370			N/A	W1-8L	18X24	CHEVRON LEFT	3.00	14	
371			N/A	W1-8R	18X24	CHEVRON LEFT	3.00	14	
372			N/A	W1-8L	18X24	CHEVRON LEFT	3.00	14	
373			N/A	W1-8R	18X24	CHEVRON LEFT	3.00	14	
374			N/A	W1-8L	18X24	CHEVRON LEFT	3.00	14	
375	4.33	0.67	R-L SYMBOL	W1-4R	30X30	R-L SYMBOL	6.25	14	
376	4.33	0.67	35 MPH	W13-1	18X18	35 MPH	2.25		



THESE ITEMS WERE DELETED IN OCTOBER 2008 AND ARE TO REMAIN

ROUTE NO.	SECTION	COUNTY	TOTAL SHEETS	SHEET NO.
FAU 6576	09-00177-00-SP	PEORIA	33	12
FED. ROAD DIST. NO.		7 ILLINOIS	PROJECT: HSP 5093 (151)	
CONTRACT NO. 89561				

SIGN PANEL AND POST QUANTITIES
KICKAPOO CREEK ROAD (R51), SECTION 09-00177-00-SP, CONTRACT 89561
 START 0.00 MILES @ IL 8 IN POTTSTOWN
 END 5.00 MILES @ TREASURE STREET IN BARTONVILLE

BOLD ITEMS SIGNIFY NEW SIGN LOCATIONS

SIGN NUMBER	MILES FROM		EXISTING MESSAGE	PROPOSED SIGN CODE	PROPOSED SIGN SIZE	PROPOSED MESSAGE	SIGN PANEL SQ. FT.	POST FOOT	SOLAR POWERED FLASHING BEACON
	START	END							
377	4.37	0.64	DIVIDED HIGHWAY	W6-1	36X36	DIVIDED HIGHWAY SYMBOL	9.00	16	
378	4.37	0.64	CENTER PIER	W16-10 PC	24X24	CENTER PIER	4.00		
379	4.46	0.43	NO PASS ZONE	W14-3	36X48X48	NO PASS ZONE	5.60	16	
380	4.6	0.4	SPEED LIMIT 40	R2-1	24X30	SPEED LIMIT 40	5.00	14	
381	4.61	0.39	SPEED LIMIT 40	R2-1	24X30	SPEED LIMIT 40	5.00	14	
382	4.63	0.37	NO PASS ZONE	W14-3	36X48X48	NO PASS ZONE	5.60	16	
383	4.8	0.2	SHARP RT. TURN	W1-1aL	36X36	SHARP RT. TURN 10	9.00	14	
384	4.83	0.17	STOP AHEAD	W3-1	36X36	STOP AHEAD SYMBOL	9.00	14	
385	4.85	0.15	LOW CLEAR 12'-0"	W12-2	36X36	12'-0"	9.00	16	
386	4.85	0.15	3/4 MILE AHEAD	W16-3	24X24	3/4 MILE	4.00		
387	4.86	0.14	SPEED LIMIT 40	R2-1	24X30	SPEED LIMIT 40	5.00	14	
388	4.87	0.13	SCENIC HWY	D6-1 PC	24X36	SCENIC HWY	6.00	14	
389	4.87	0.13	SPEED LIMIT 35	R2-1	24X30	SPEED LIMIT 35	5.00	14	
390			N/A	W5-1	36X36	ROAD NARROWS	9.00	14	
391			N/A	W1-8R	18X24	CHEVRON RIGHT	3.00	14	
392			N/A	W1-8L	18X24	CHEVRON LEFT	3.00	14	
393			N/A	W1-8R	18X24	CHEVRON RIGHT	3.00	14	
394			N/A	W1-8L	18X24	CHEVRON LEFT	3.00	14	
395			N/A	W1-8R	18X24	CHEVRON RIGHT	3.00	14	
396			N/A	W1-8L	18X24	CHEVRON LEFT	3.00	14	
397	4.88	0.12	→ SYMBOL	W1-6	48X24	→ ARROW SYMBOL	8.00	14	
398	4.88	0.12	10 MPH	W13-1	24X24	10 MPH	4.00		
399	4.88	0.12	← SYMBOL	W1-6	48X24	← ARROW SYMBOL	8.00	14	
400	4.88	0.12	10 MPH	W13-1	24X24	10 MPH	4.00		
401			N/A	W1-8R	18X24	CHEVRON RIGHT	3.00	14	
402			N/A	W1-8L	18X24	CHEVRON LEFT	3.00	14	
403			N/A	W1-8R	18X24	CHEVRON RIGHT	3.00	14	
404			N/A	W1-8L	18X24	CHEVRON LEFT	3.00	14	
405			N/A	W1-8R	18X24	CHEVRON RIGHT	3.00	14	
406			N/A	W1-8L	18X24	CHEVRON LEFT	3.00	14	
407			N/A	OM-3R	12X36	OBJECT MARKER	3.00	12	
408			N/A	OM-3L	12X36	OBJECT MARKER	3.00	12	
409			N/A	OM-3R	12X36	OBJECT MARKER	3.00	12	
410			N/A	OM-3L	12X36	OBJECT MARKER	3.00	12	
411			N/A	W5-1	36X36	ROAD NARROWS	9.00	14	
412	4.89	0.11	END	M4-6	24X12	END	2.00	14	
413	4.89	0.11	PEORIA CO R51	M1-6	24X24	PEORIA CO R51	4.00		
414	4.89	0.11	BARTONVILLE	I1-I101	18X24	BARTONVILLE	3.00		
415	4.9	0.1	NO PASS ZONE	W14-3	36X48X48	NO PASS ZONE	5.60	16	
416	4.9	0.1	OBJECT MARKER	OM-3R	12X36	OBJECT MARKER	3.00	14	
417	4.9	0.1	OBJECT MARKER	OM-3L	12X36	OBJECT MARKER	3.00	14	
418	4.9	0.1	OBJECT MARKER	OM-3R	12X36	OBJECT MARKER	3.00	14	
419	4.9	0.1	OBJECT MARKER	OM-3L	12X36	OBJECT MARKER	3.00	14	
420	4.91	0.09	NO CLASS 1-2-3	R5-I102	24X36	NO CLASS 1-2-3 TRUCK ACCESS	6.00	14	
421	4.92	0.08	NORTH	M3-3	24X12	NORTH	2.00	14	
422	4.92	0.08	PEORIA CO R51	M1-6	24X24	PEORIA CO R51	4.00		
423	4.92	0.08	BEGIN	M4-GB	18X24	BEGIN	3.00		

ROUTE NO.	SECTION	COUNTY	TOTAL SHEETS	SHEET NO.
FAU 6576	09-00177-00-SP	PEORIA	33	13
FED. ROAD DIST. NO.		7 ILLINOIS	PROJECT: HSP 5093 (19)	
CONTRACT NO. 89561				

SIGN PANEL AND POST QUANTITIES
KICKAPOO CREEK ROAD (R51), SECTION 09-00177-00-SP, CONTRACT 89561
 START 0.00 MILES @ IL 8 IN POTTSTOWN
 END 5.00 MILES @ TREASURE STREET IN BARTONVILLE

BOLD ITEMS SIGNIFY NEW SIGN LOCATIONS

<u>SIGN NUMBER</u>	<u>MILES FROM START</u>	<u>END</u>	<u>EXISTING MESSAGE</u>	<u>PROPOSED SIGN CODE</u>	<u>PROPOSED SIGN SIZE</u>	<u>PROPOSED MESSAGE</u>	<u>SIGN PANEL SQ. FT.</u>	<u>POST FOOT</u>	<u>SOLAR POWERED FLASHING BEACON</u>
424	5	0	STOP	R1-1	30X30	STOP	6.25	14	

KICKAPOO CREEK ROAD TOTALS	1,687.65 SQ.FT. SIGN PANELS	4,908.00 FOOT POSTS	13 EACH SIGN FLASHERS
-------------------------------	-----------------------------------	---------------------------	-----------------------------

ROUTE NO.	SECTION	COUNTY	TOTAL SHEETS	SHEET NO.
FAU 6576	09-00177-00-SP	PEORIA	33	14
FED. ROAD DIST. NO.	7	ILLINOIS	PROJECT: HSP 5093 (151)	
CONTRACT NO. 89561				

**TOTAL
SIGN PANEL AND POST QUANTITIES**
KICKAPOO CREEK ROAD (R51), SECTION 09-00177-00-SP, CONTRACT 89561
START 0.00 MILES @ IL 8 IN POTTSTOWN
END 5.00 MILES @ TREASURE STREET IN BARTONVILLE

NUMBER OF SIGNS	PROPOSED SIGN CODE	PROPOSED SIGN SIZE	PROPOSED MESSAGE	NUMBER OF POSTS
1	D3-1	30X9	ILLINOIS RT 8 4166W	1
1	D3-1	30X9	POTTSTOWN ROAD 2406N	
1	D3-1	30X9	POTTSTOWN ROAD 2200N	1
1	D3-1	30X9	KICKAPOO CREEK ROAD 4350N	
1	D3-1	30x9	FARMINGTON ROAD 1130N	1
1	D3-1	30x9	KICKAPOO CREEK ROAD 3870W	
1	D3-1	30X9	HARMAN HIGHWAY 680S	1
1	D3-1	30X9	KICKAPOO CREEK ROAD 4000W	
1	D3-1	30X9	MIDDLE ROAD 1458S	1
1	D3-1	30X9	KICKAPOO CREEK ROAD 3858W	
1	D3-1	30X9	HARP HOLLOW ROAD 1526S	1
1	D3-1	30X9	KICKAPOO CREEK ROAD 3920W	
8	D6-1 PC	24X36	SCENIC HWY	8
1	I1-I101	18X24	BARTONVILLE	
2	I-5	24X24	AIRPORT SYMBOL	2
4	I-107	36x36	ADOPT A HIGHWAY	4
12	M1-6	24X24	PEORIA CO R51	3
2	M1-I100	30X24	ILLINOIS 116	
3	M3-1	24X12	NORTH	3
4	M3-3	24X12	SOUTH	4
2	M4-6	24X12	END	2
2	M4-GB	18X24	BEGIN	
1	M5-1L	21X15	ADVANCE LT. TURN	
1	M5-1R	21X15	ADVANCE RT. TURN	
5	M6-1	21X15	ARROW SYMBOL	
12	OM2-2V	6X12	OBJECT MARKER	12
6	OM-3L	12X36	OBJECT MARKER	6
22	OM-3R	12X36	OBJECT MARKER	22
11	R1-1	30X30	STOP	11
1	R1-2	36X36X36	YIELD	1
1	R1-2a	24X12	TO ONCOMING TRAFFIC	1
6	R1-4	18X6	ALL WAY	6
2	R15-I100	24X24	PENALTY FOR DUMPING ON PUBLIC HWY	2
8	R2-1	24X30	SPEED LIMIT 45	8
7	R2-1	24X30	SPEED LIMIT 40	7
1	R2-1	24X30	SPEED LIMIT 35	1
1	R3-7R	30X30	RIGHT LANE MUST TURN RIGHT	1
4	R5-I102	24X36	NO CLASS 1-2-3 TRUCK ACCESS	4
2	R8-3	12X18	NO PARKING	2
2	R8-8	24X30	DO NOT STOP ON TRACKS	
2	S3-1	30X30	SCH BUS STOP AHD	2
3	W10-1	36" DIA.	R X R	3
2	W10-11	36X36	STORAGE SPACE SYMBOL	2
2	W10-11a	30X36	60' BETWEEN TRACKS & HIGHWAY	
2	W10-1a	24X12	EXEMPT	
1	W1-10	30X30	ENTRANCE ON CURVE	1

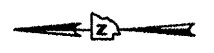
**TOTAL
SIGN PANEL AND POST QUANTITIES**
KICKAPOO CREEK ROAD (R51), SECTION 09-00177-00-SP, CONTRACT 89561
START 0.00 MILES @ IL 8 IN POTTSTOWN
END 5.00 MILES @ TREASURE STREET IN BARTONVILLE

NUMBER OF SIGNS	PROPOSED SIGN CODE	PROPOSED SIGN SIZE	PROPOSED MESSAGE	NUMBER OF POSTS
1	W11-10	30X30	TRUCK CROSSING SYMBOL	1
	W1-1aL	36X36	SHARP LT. TURN 15	
2	W1-1aL	36X36	SHARP LT. TURN 15	2
1	W1-1aL	36X36	SHARP RT. TURN 10	1
1	W1-1aR	36X36	SHARP RT. TURN 35	1
1	W1-1aR	36X36	SHARP RT. TURN 15	1
4	W12-2	36X36	12'-0"	4
1	W1-2aL	36x36	CURVE LEFT 40	1
1	W1-2aL	36X36	CURVE LEFT 30	1
3	W1-2aL	36X36	CURVE LEFT 35	3
1	W1-2aR	36x36	CURVE RIGHT 40	1
2	W1-2aR	36X36	CURVE RIGHT 35	2
1	W13-1	18X18	35 MPH	
2	W13-1	24X24	10 MPH	
13	W14-3	36X48X48	NO PASS ZONE	13
1	W1-4R	30X30	R-L SYMBOL	1
3	W1-5L	30X30	WINDING L-R-L-R	3
4	W1-6	48X24	← ARROW SYMBOL	4
2	W16-10 PC	24x24	CENTER PIER	
1	W16-3	24X24	1 MILE	
1	W16-3	24X24	1/2 MILE	
1	W16-3	24X24	3/4 MILE	
1	W16-8	24X12	MIDDLE RD	
1	W16-8	24X18	HARP HOLLOW ROAD	
1	W16-8	24X12	MIDDLE ROAD	
1	W16-8	24X12	HARP HOLLOW ROAD	
2	W16-1101	30X30	CHURCH ENTRANCE	2
3	W1-7	48X24	←→ SYMBOL	3
85	W1-8L	18X24	CHEVRON LEFT	85
85	W1-8R	18X24	CHEVRON RIGHT	85
4	W21-I11	36x36	CLEAN UP CREW	
5	W2-2	30X30	INTERSECTION AHEAD	5
8	W3-1	36X36	STOP AHEAD SYMBOL	8
1	W3-2	36X36	YIELD AHEAD SYMBOL	1
4	W5-1	36X36	ROAD NARROWS	4
2	W6-1	36X36	DIVIDED HIGHWAY SYMBOL	2
2	W7-3a	24X18	NEXT 1 MILE	
2	W8-1 PC	30X30	FALLING ROCK	2

411 SIGNS	KICKAPOO CREEK ROAD TOTALS	360 POSTS
--------------	-------------------------------	--------------

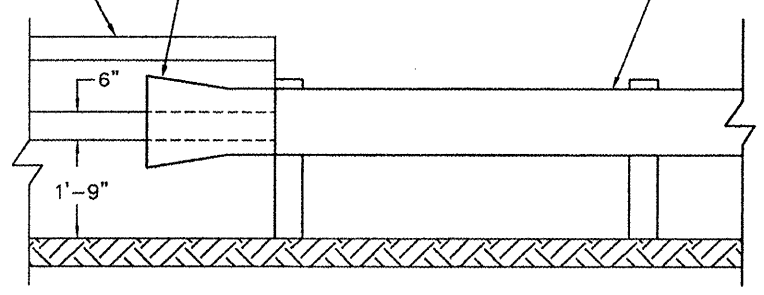
The contractor shall verify all sign and post information before ordering material.

ROUTE NO.	SECTION	COUNTY	TOTAL SHEETS	SHEET NO.
FAU 6576	09-00177-00-SP	PEORIA	33	15
FED. ROAD DIST. NO.	7	ILLINOIS	PROJECT:	HSP 5093 (151)
CONTRACT NO.	89561			



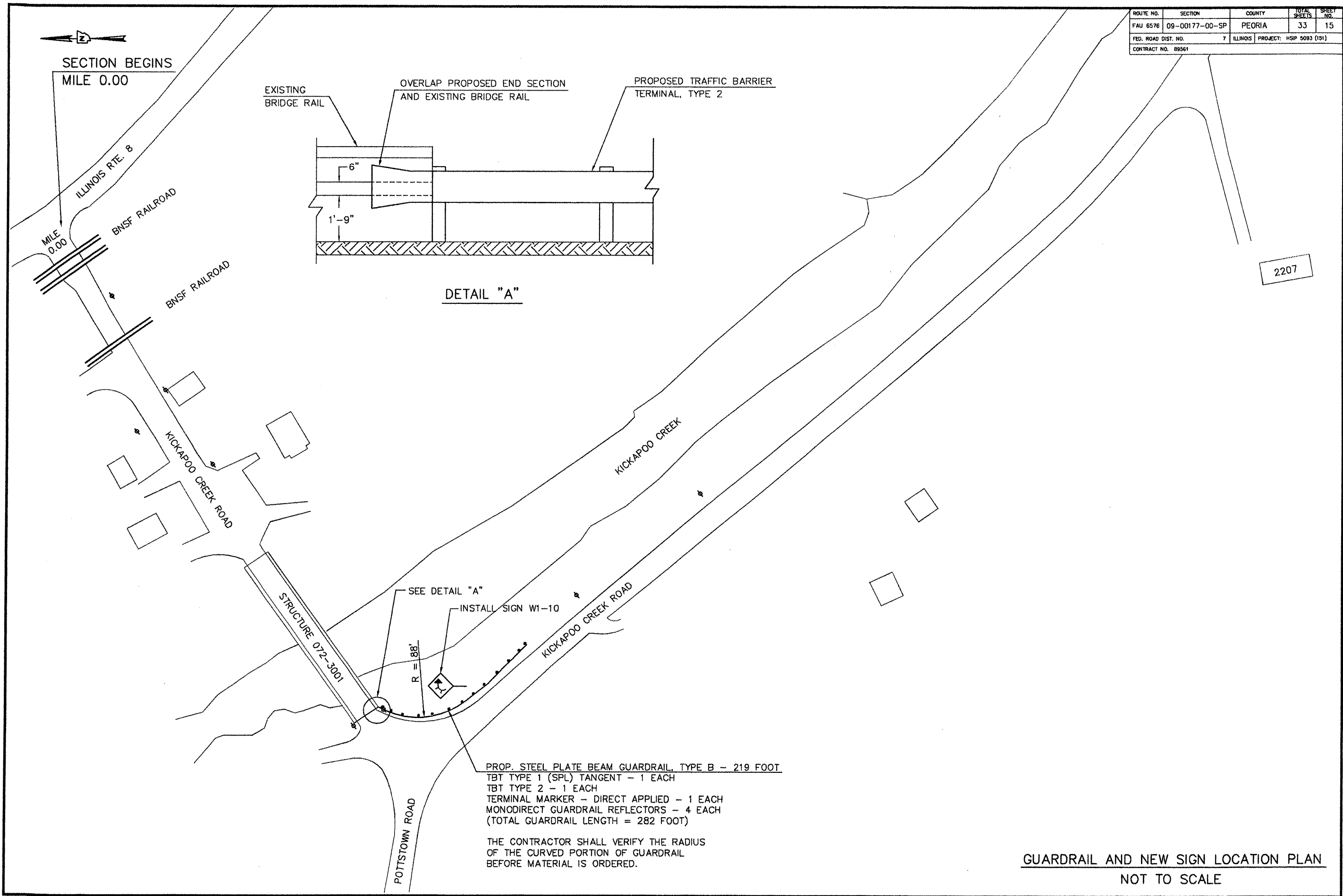
SECTION BEGINS
MILE 0.00

EXISTING BRIDGE RAIL
OVERLAP PROPOSED END SECTION AND EXISTING BRIDGE RAIL
PROPOSED TRAFFIC BARRIER TERMINAL, TYPE 2



DETAIL "A"

2207



PROP. STEEL PLATE BEAM GUARDRAIL, TYPE B - 219 FOOT
 TBT TYPE 1 (SPL) TANGENT - 1 EACH
 TBT TYPE 2 - 1 EACH
 TERMINAL MARKER - DIRECT APPLIED - 1 EACH
 MONODIRECT GUARDRAIL REFLECTORS - 4 EACH
 (TOTAL GUARDRAIL LENGTH = 282 FOOT)

THE CONTRACTOR SHALL VERIFY THE RADIUS OF THE CURVED PORTION OF GUARDRAIL BEFORE MATERIAL IS ORDERED.

GUARDRAIL AND NEW SIGN LOCATION PLAN
NOT TO SCALE

ROUTE NO.	SECTION	COUNTY	TOTAL SHEETS	SHEET NO.
FAU 6576	09-00177-00-SP	PEORIA	33	16
FED. ROAD DIST. NO.	7	ILLINOIS	PROJECT: HSP 5093 (151)	
CONTRACT NO. 09561				



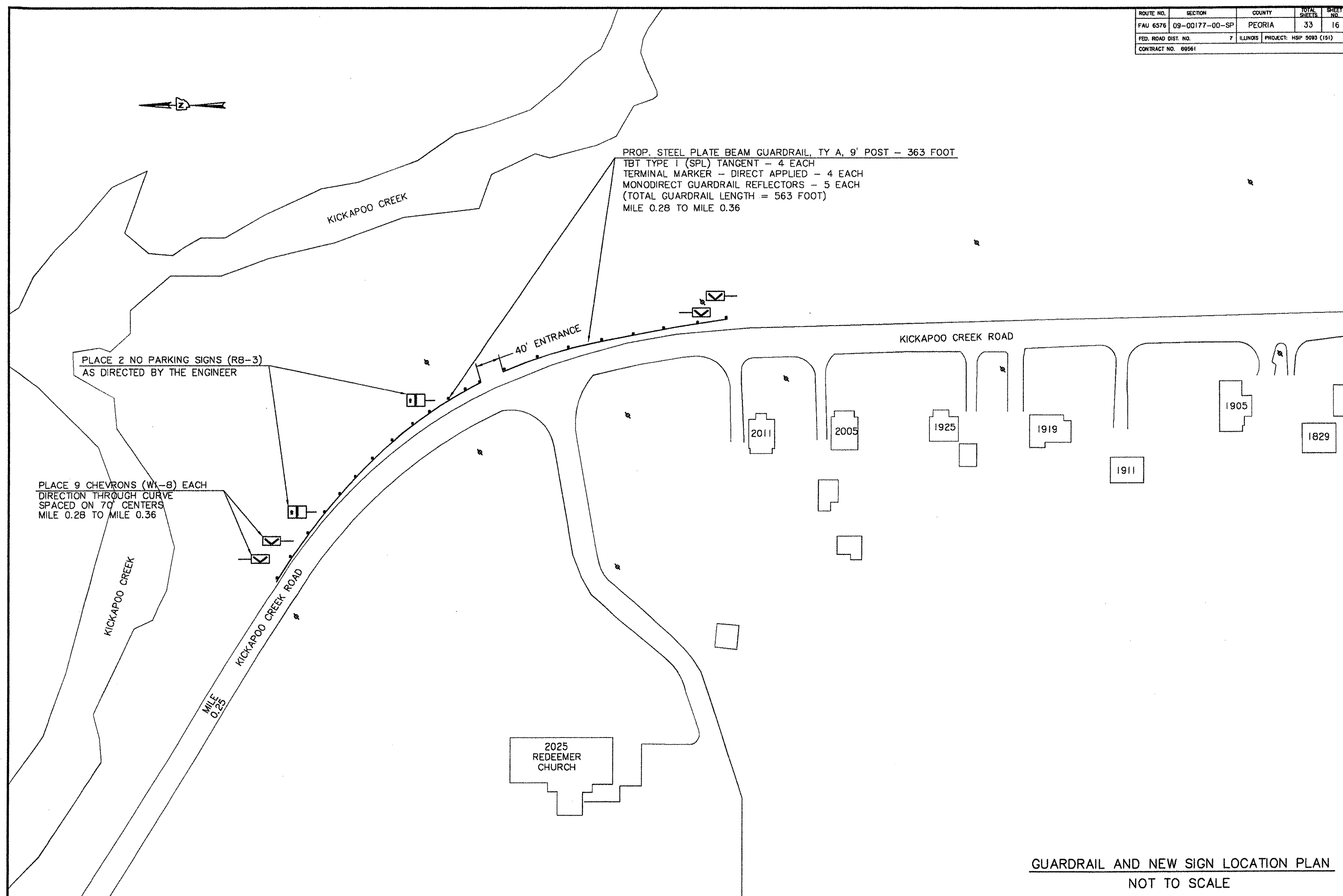
PROP. STEEL PLATE BEAM GUARDRAIL, TY A, 9' POST - 363 FOOT
 TBT TYPE I (SPL) TANGENT - 4 EACH
 TERMINAL MARKER - DIRECT APPLIED - 4 EACH
 MONODIRECT GUARDRAIL REFLECTORS - 5 EACH
 (TOTAL GUARDRAIL LENGTH = 563 FOOT)
 MILE 0.28 TO MILE 0.36

PLACE 2 NO PARKING SIGNS (R8-3)
 AS DIRECTED BY THE ENGINEER

PLACE 9 CHEVRONS (W1-8) EACH
 DIRECTION THROUGH CURVE
 SPACED ON 70' CENTERS
 MILE 0.28 TO MILE 0.36

2025
 REDEEMER
 CHURCH

GUARDRAIL AND NEW SIGN LOCATION PLAN
 NOT TO SCALE





ROUTE NO.	SECTION	COUNTY	TOTAL SHEETS	SHEET NO.
FAU 6576	09-00177-00-SP	PEORIA	33	17
FED. ROAD DIST. NO.	7	ILLINOIS	PROJECT: HSP 5093 (151)	
CONTRACT NO. 89561				

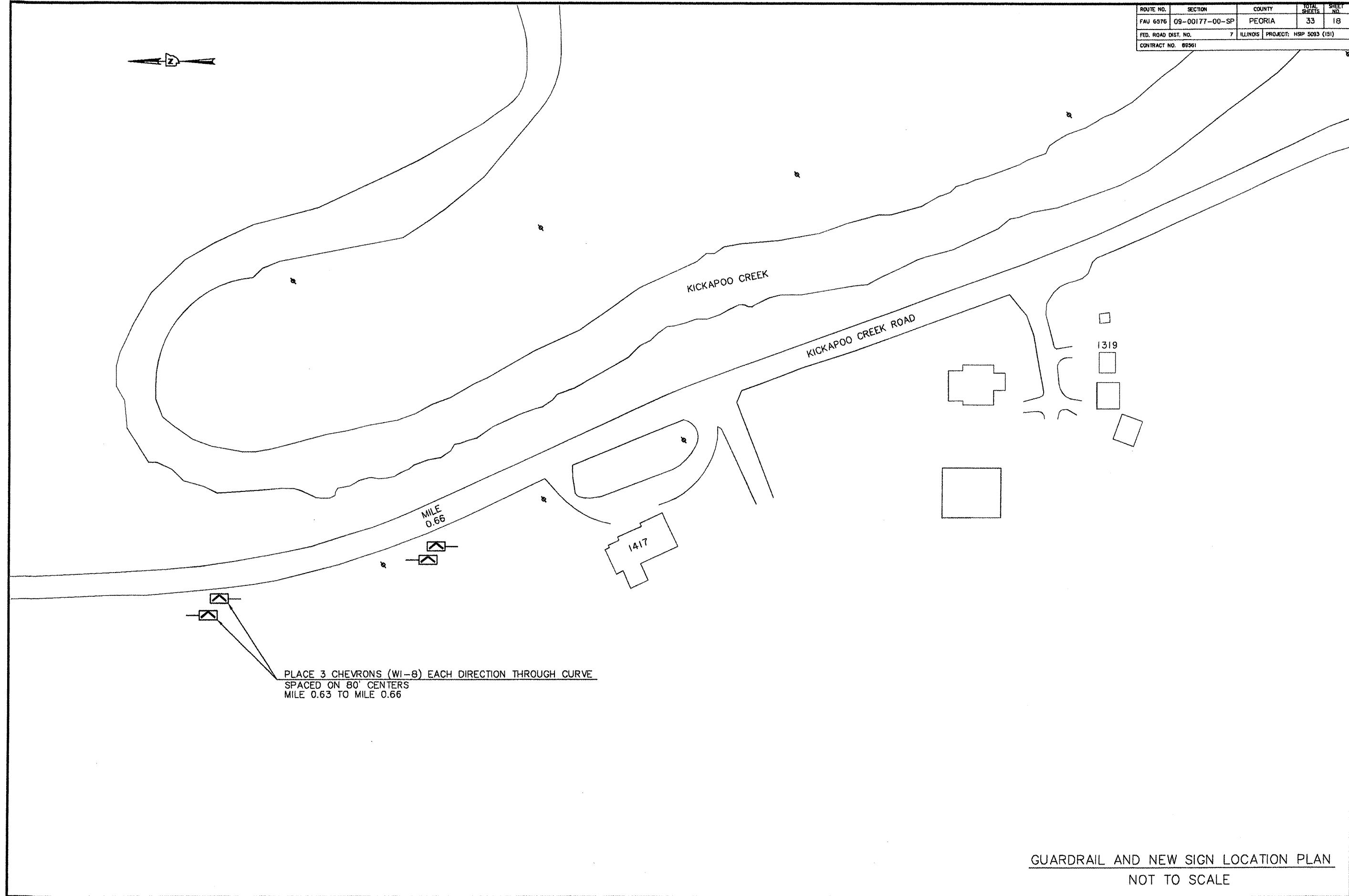
PLACE 3 CHEVRONS (W1-8) EACH
DIRECTION THROUGH CURVE
SPACED ON 90' CENTERS
MILE 0.65 TO MILE 0.68

MILE
0.65

KICKAPOO CREEK ROAD

GUARDRAIL AND NEW SIGN LOCATION PLAN
NOT TO SCALE

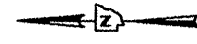
ROUTE NO.	SECTION	COUNTY	TOTAL SHEETS	SHEET NO.
FAU 6576	09-00177-00-SP	PEORIA	33	18
FED. ROAD DIST. NO.	7	ILLINOIS	PROJECT: HSP 5093 (151)	
CONTRACT NO. 89561				



PLACE 3 CHEVRONS (W1-8) EACH DIRECTION THROUGH CURVE
 SPACED ON 80' CENTERS
 MILE 0.63 TO MILE 0.66

GUARDRAIL AND NEW SIGN LOCATION PLAN
 NOT TO SCALE

ROUTE NO.	SECTION	COUNTY	TOTAL SHEETS	SHEET NO.
FAU 6576	09-00177-00-SP	PEORIA	33	19
FED. ROAD DIST. NO.	7	ILLINOIS	PROJECT: HSP 5093 (19)	
CONTRACT NO. 89561				



SOLAR POWERED FLASHING BEACON ASSEMBLY (COMPLETE)
WITH YELLOW LENS AND STOP AHEAD SIGN (W3-1)
2 EACH

SOLAR POWERED FLASHING BEACON ASSEMBLY (COMPLETE)
WITH YELLOW LENS AND STOP AHEAD SIGN (W3-1)
2 EACH

PLACE OBJECT MARKER
SIGN AT UTILITY POLE

FARMINGTON ROAD

KICKAPOO CREEK ROAD

MILE 1.37

BRASS RAIL

1241

1025

1105

1017

1005

925

GUARDRAIL AND NEW SIGN LOCATION PLAN
NOT TO SCALE

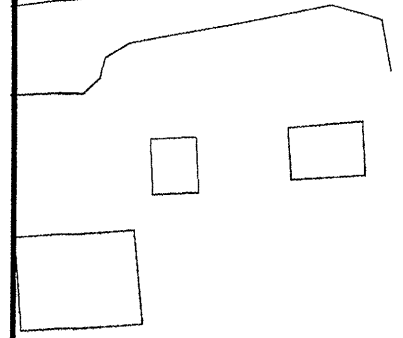
ROUTE NO.	SECTION	COUNTY	TOTAL SHEETS	SHEET NO.
FAU 6576	09-00177-00-SP	PEORIA	33	20
FED. ROAD DIST. NO.	7	ILLINOIS	PROJECT: HSP 5093 (151)	
CONTRACT NO. 69561				



KICKAPOO CREEK

KICKAPOO CREEK ROAD

809



GUARDRAIL AND NEW SIGN LOCATION PLAN
NOT TO SCALE

ROUTE NO.	SECTION	COUNTY	TOTAL SHEETS	SHEET NO.
FAU 6576	09-00177-00-SP	PEORIA	33	21
FED. ROAD DIST. NO.	7	ILLINOIS	PROJECT: HSP 5093 (151)	
CONTRACT NO. 88961				



BNSF RAILROAD

PLACE 10 CHEVRONS (W1-8) EACH
 DIRECTION THROUGH CURVE
 SPACED ON 80' CENTERS
 MILE 2.0 TO MILE 2.14

MILE
2.0

KICKAPOO CREEK ROAD

PROP. STEEL PLATE BEAM GUARDRAIL, TY A, 9' POST - 663 FOOT
 TBT TYPE 1 (SPL) TANGENT - 2 EACH
 TERMINAL MARKER - DIRECT APPLIED - 2 EACH
 MONODIRECT GUARDRAIL REFLECTORS - 9 EACH
 (TOTAL GUARDRAIL LENGTH = 763 FOOT)
 MILE 2.0 TO MILE 2.14

515

ROUTE NO.	SECTION	COUNTY	TOTAL SHEETS	SHEET NO.
FAU 6576	09-00177-00-SP	PEORIA	33	22
FED. ROAD DIST. NO.	7	ILLINOIS PROJECT	HSP 5093 (151)	
CONTRACT NO. 89561				



KICKAPOO CREEK

BNSF RAILROAD

KICKAPOO CREEK ROAD

PROP. SPB GUARDRAIL, TY A, 9' POST - 663 FOOT
 TBT TYPE 1 (SPL) TANGENT - 2 EACH
 TERMINAL MARKER - DIRECT APPLIED - 2 EACH
 MONODIRECT GUARDRAIL REFLECTORS - 9 EACH
 (TOTAL GUARDRAIL LENGTH = 763 FOOT)
 MILE 2.0 TO MILE 2.14

PLACE 10 CHEVRONS (W1-8) EACH
 DIRECTION THROUGH CURVE
 SPACED ON 80' CENTERS
 MILE 2.0 TO MILE 2.14

GUARDRAIL AND NEW SIGN LOCATION PLAN
 NOT TO SCALE

ROUTE NO.	SECTION	COUNTY	TOTAL SHEETS	SHEET NO.
FAU 6576	09-00177-00-SP	PEORIA	33	23
FED. ROAD DIST. NO. 7		ILLINOIS PROJECT: HSP 5093 (191)		
CONTRACT NO. 89561				



PLACE 17 CHEVRONS (W1-8) EACH
DIRECTION THROUGH CURVE
SPACED AT 70' CENTERS
MILE 2.27 TO MILE 2.44

PLACE OBJECT MARKER
SIGN AT UTILITY POLE

207

123

MILE
2.25

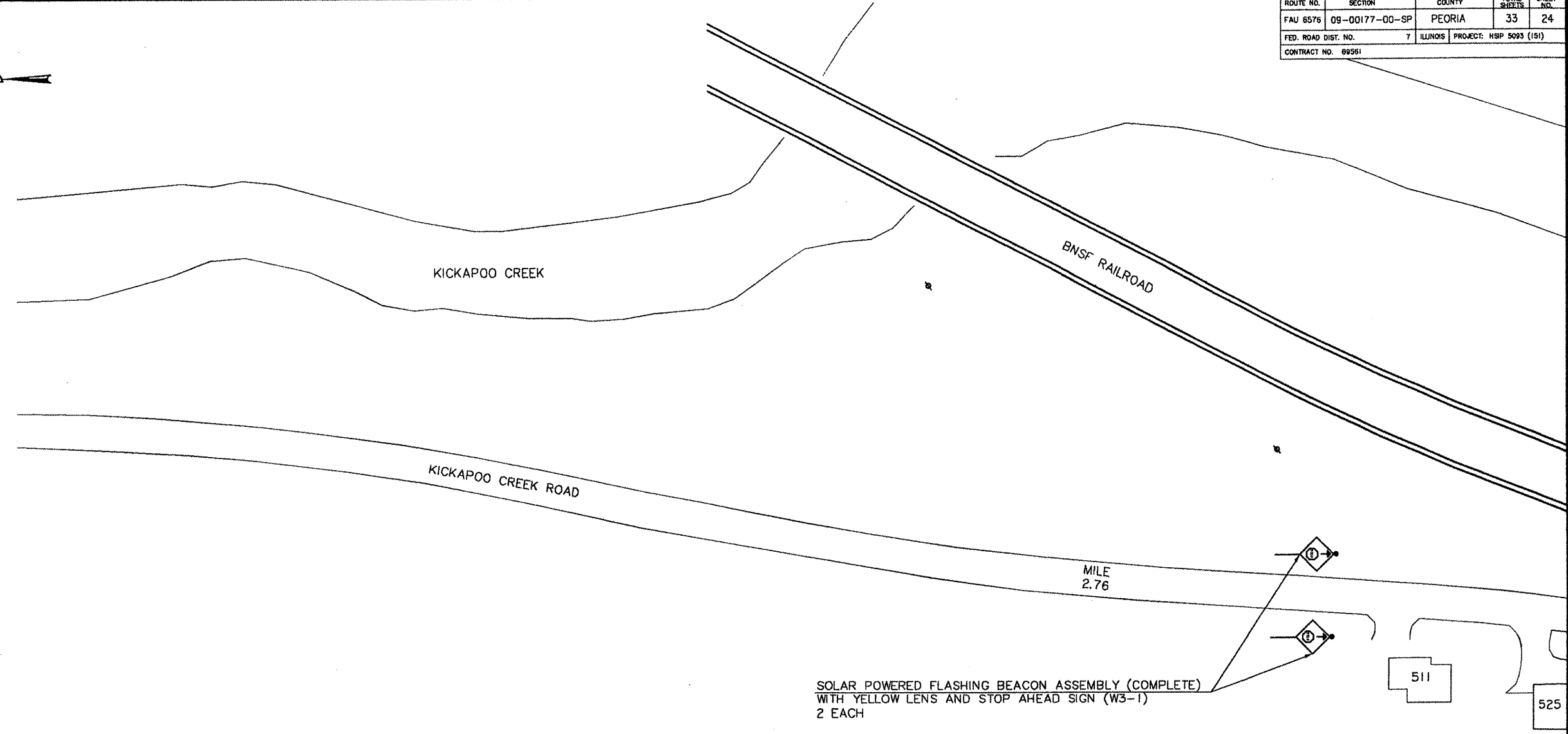
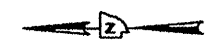
KICKAPOO CREEK ROAD

KICKAPOO CREEK

PROP. STEEL PLATE BEAM GUARDRAIL, TY A, 9' POST - 625 FOOT
TBT TYPE 1 (SPL) TANGENT - 2 EACH
TERMINAL MARKER - DIRECT APPLIED - 2 EACH
MONODIRECT GUARDRAIL REFLECTORS - 7 EACH
(TOTAL GUARDRAIL LENGTH = 625 FOOT)
MILE 2.32 TO MILE 2.44

GUARDRAIL AND NEW SIGN LOCATION PLAN
NOT TO SCALE

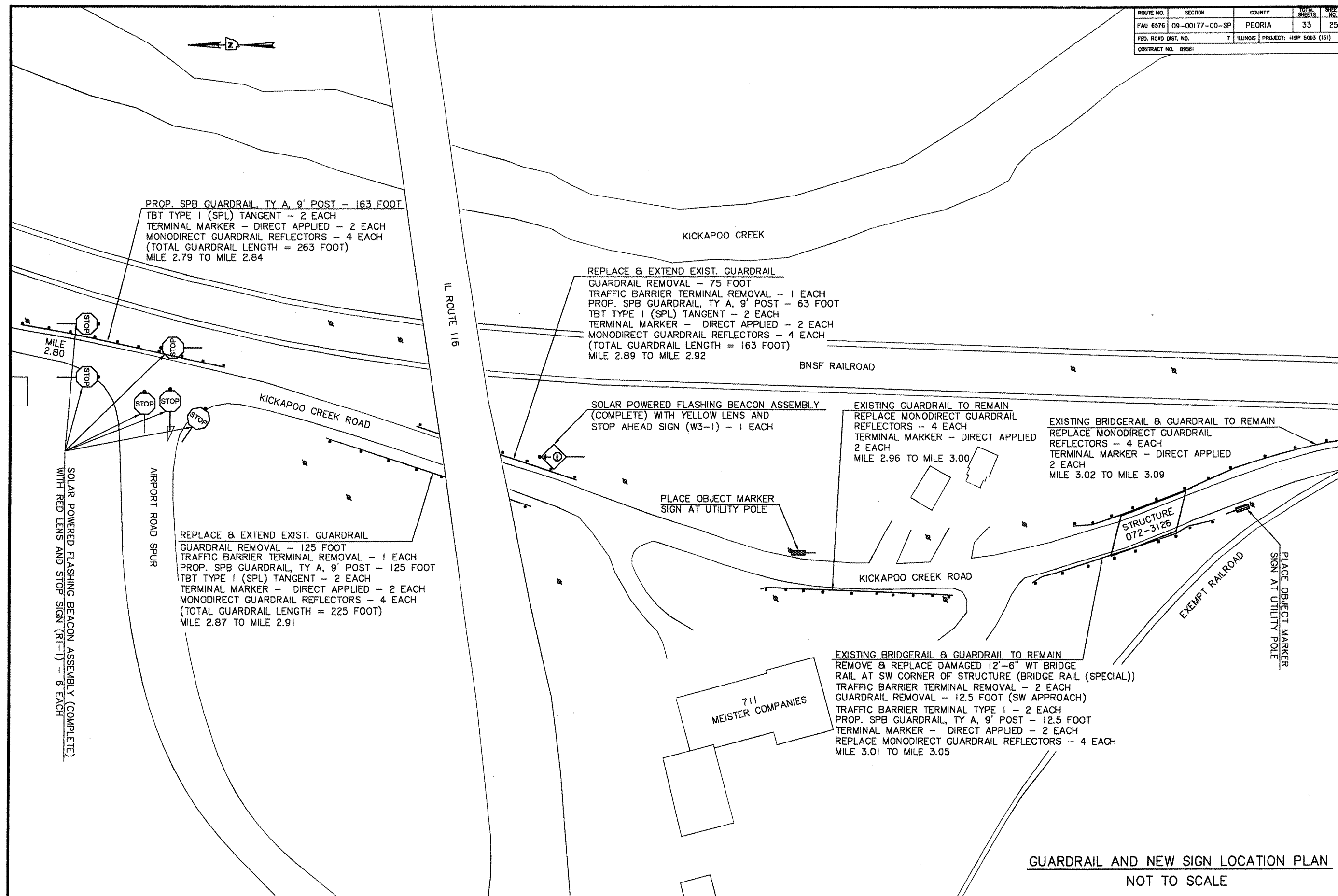
ROUTE NO.	SECTION	COUNTY	TOTAL SHEETS	SHEET NO.
FAU 6576	09-00177-00-SP	PEORIA	33	24
FED. ROAD DIST. NO.	7	ILLINOIS	PROJECT: HSP 5093 (ISI)	
CONTRACT NO. 69561				



SOLAR POWERED FLASHING BEACON ASSEMBLY (COMPLETE)
 WITH YELLOW LENS AND STOP AHEAD SIGN (W3-1)
 2 EACH

GUARDRAIL AND NEW SIGN LOCATION PLAN
 NOT TO SCALE

ROUTE NO.	SECTION	COUNTY	TOTAL SHEETS	SHEET NO.
FAU 6576	09-00177-00-SP	PEORIA	33	25
FED. ROAD DIST. NO.	7	ILLINOIS	PROJECT: HSP 5085 (15)	
CONTRACT NO.	89561			



PROP. SPB GUARDRAIL, TY A, 9' POST - 163 FOOT
 TBT TYPE 1 (SPL) TANGENT - 2 EACH
 TERMINAL MARKER - DIRECT APPLIED - 2 EACH
 MONODIRECT GUARDRAIL REFLECTORS - 4 EACH
 (TOTAL GUARDRAIL LENGTH = 263 FOOT)
 MILE 2.79 TO MILE 2.84

REPLACE & EXTEND EXIST. GUARDRAIL
 GUARDRAIL REMOVAL - 75 FOOT
 TRAFFIC BARRIER TERMINAL REMOVAL - 1 EACH
 PROP. SPB GUARDRAIL, TY A, 9' POST - 63 FOOT
 TBT TYPE 1 (SPL) TANGENT - 2 EACH
 TERMINAL MARKER - DIRECT APPLIED - 2 EACH
 MONODIRECT GUARDRAIL REFLECTORS - 4 EACH
 (TOTAL GUARDRAIL LENGTH = 163 FOOT)
 MILE 2.89 TO MILE 2.92

SOLAR POWERED FLASHING BEACON ASSEMBLY
 (COMPLETE) WITH YELLOW LENS AND
 STOP AHEAD SIGN (W3-1) - 1 EACH

EXISTING GUARDRAIL TO REMAIN
 REPLACE MONODIRECT GUARDRAIL
 REFLECTORS - 4 EACH
 TERMINAL MARKER - DIRECT APPLIED
 2 EACH
 MILE 2.96 TO MILE 3.00

EXISTING BRIDGERAIL & GUARDRAIL TO REMAIN
 REPLACE MONODIRECT GUARDRAIL
 REFLECTORS - 4 EACH
 TERMINAL MARKER - DIRECT APPLIED
 2 EACH
 MILE 3.02 TO MILE 3.09

PLACE OBJECT MARKER
 SIGN AT UTILITY POLE

REPLACE & EXTEND EXIST. GUARDRAIL
 GUARDRAIL REMOVAL - 125 FOOT
 TRAFFIC BARRIER TERMINAL REMOVAL - 1 EACH
 PROP. SPB GUARDRAIL, TY A, 9' POST - 125 FOOT
 TBT TYPE 1 (SPL) TANGENT - 2 EACH
 TERMINAL MARKER - DIRECT APPLIED - 2 EACH
 MONODIRECT GUARDRAIL REFLECTORS - 4 EACH
 (TOTAL GUARDRAIL LENGTH = 225 FOOT)
 MILE 2.87 TO MILE 2.91

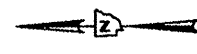
EXISTING BRIDGERAIL & GUARDRAIL TO REMAIN
 REMOVE & REPLACE DAMAGED 12'-6" WT BRIDGE
 RAIL AT SW CORNER OF STRUCTURE (BRIDGE RAIL (SPECIAL))
 TRAFFIC BARRIER TERMINAL REMOVAL - 2 EACH
 GUARDRAIL REMOVAL - 12.5 FOOT (SW APPROACH)
 TRAFFIC BARRIER TERMINAL TYPE 1 - 2 EACH
 PROP. SPB GUARDRAIL, TY A, 9' POST - 12.5 FOOT
 TERMINAL MARKER - DIRECT APPLIED - 2 EACH
 REPLACE MONODIRECT GUARDRAIL REFLECTORS - 4 EACH
 MILE 3.01 TO MILE 3.05

SOLAR POWERED FLASHING BEACON ASSEMBLY (COMPLETE)
 WITH RED LENS AND STOP SIGN (RT-1) - 6 EACH

PLACE OBJECT MARKER
 SIGN AT UTILITY POLE

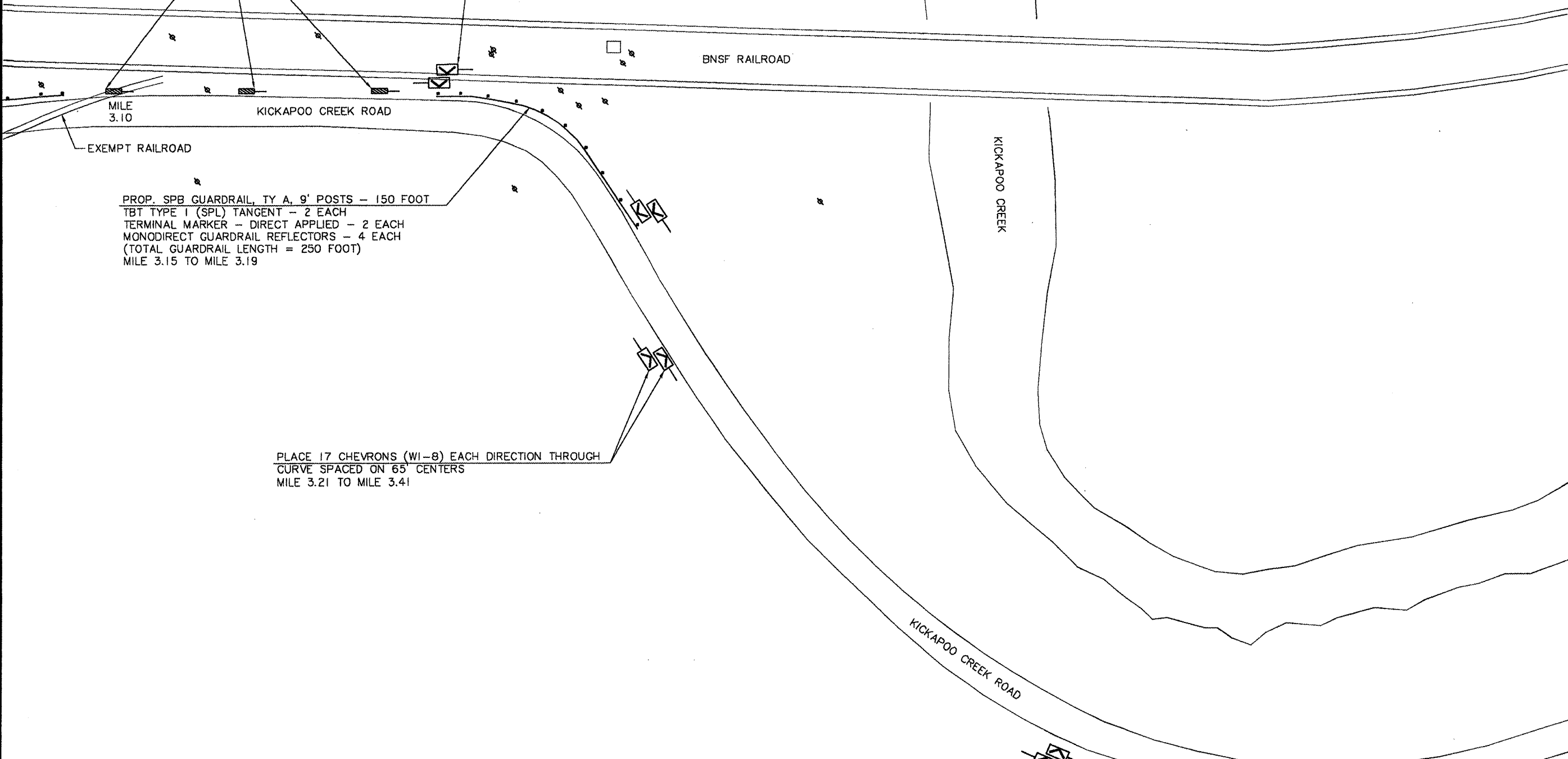
GUARDRAIL AND NEW SIGN LOCATION PLAN
 NOT TO SCALE

ROUTE NO.	SECTION	COUNTY	TOTAL SHEETS	SHEET NO.
FAU 6576	09-00177-00-SP	PEORIA	33	26
FED. ROAD DIST. NO.	7	ILLINOIS	PROJECT: HSP 5093 (19)	
CONTRACT NO. 89561				



PLACE 3 OBJECT MARKERS
PARALLEL TO RAILROAD TRACKS

PLACE 4 CHEVRONS (W1-8) EACH DIRECTION THROUGH
CURVE SPACED AT 30' CENTERS
MILE 3.15 TO MILE 3.19

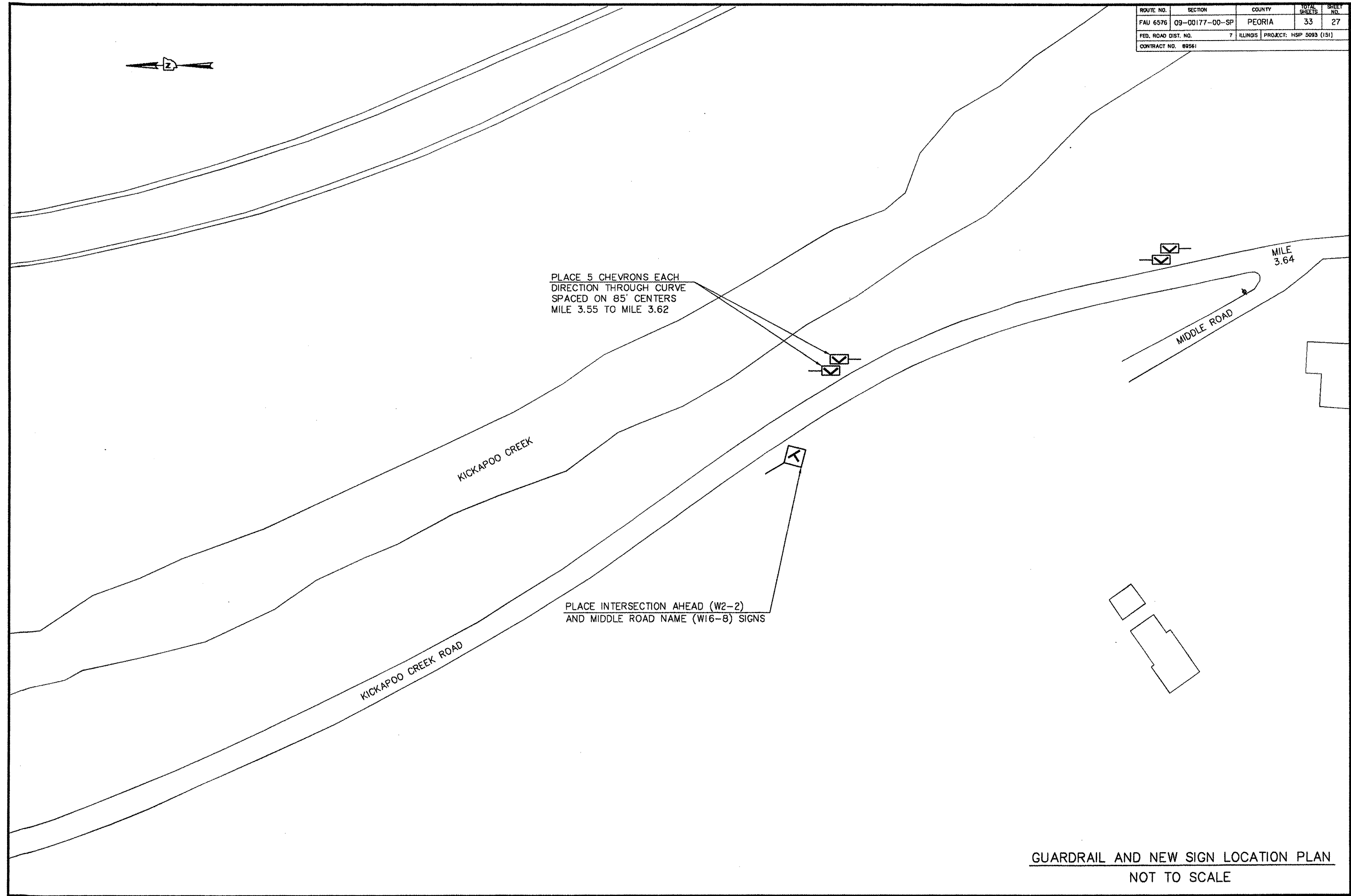


PROP. SPB GUARDRAIL, TY A, 9' POSTS - 150 FOOT
TBT TYPE 1 (SPL) TANGENT - 2 EACH
TERMINAL MARKER - DIRECT APPLIED - 2 EACH
MONODIRECT GUARDRAIL REFLECTORS - 4 EACH
(TOTAL GUARDRAIL LENGTH = 250 FOOT)
MILE 3.15 TO MILE 3.19

PLACE 17 CHEVRONS (W1-8) EACH DIRECTION THROUGH
CURVE SPACED ON 65' CENTERS
MILE 3.21 TO MILE 3.41

GUARDRAIL AND NEW SIGN LOCATION PLAN
NOT TO SCALE

ROUTE NO.	SECTION	COUNTY	TOTAL SHEETS	SHEET NO.
FAU 6576	09-00177-00-SP	PEORIA	33	27
FED. ROAD DIST. NO.	7	ILLINOIS	PROJECT: HSP 5093 (151)	
CONTRACT NO. 09561				



PLACE 5 CHEVRONS EACH
DIRECTION THROUGH CURVE
SPACED ON 85' CENTERS
MILE 3.55 TO MILE 3.62

PLACE INTERSECTION AHEAD (W2-2)
AND MIDDLE ROAD NAME (W16-8) SIGNS

KICKAPOO CREEK

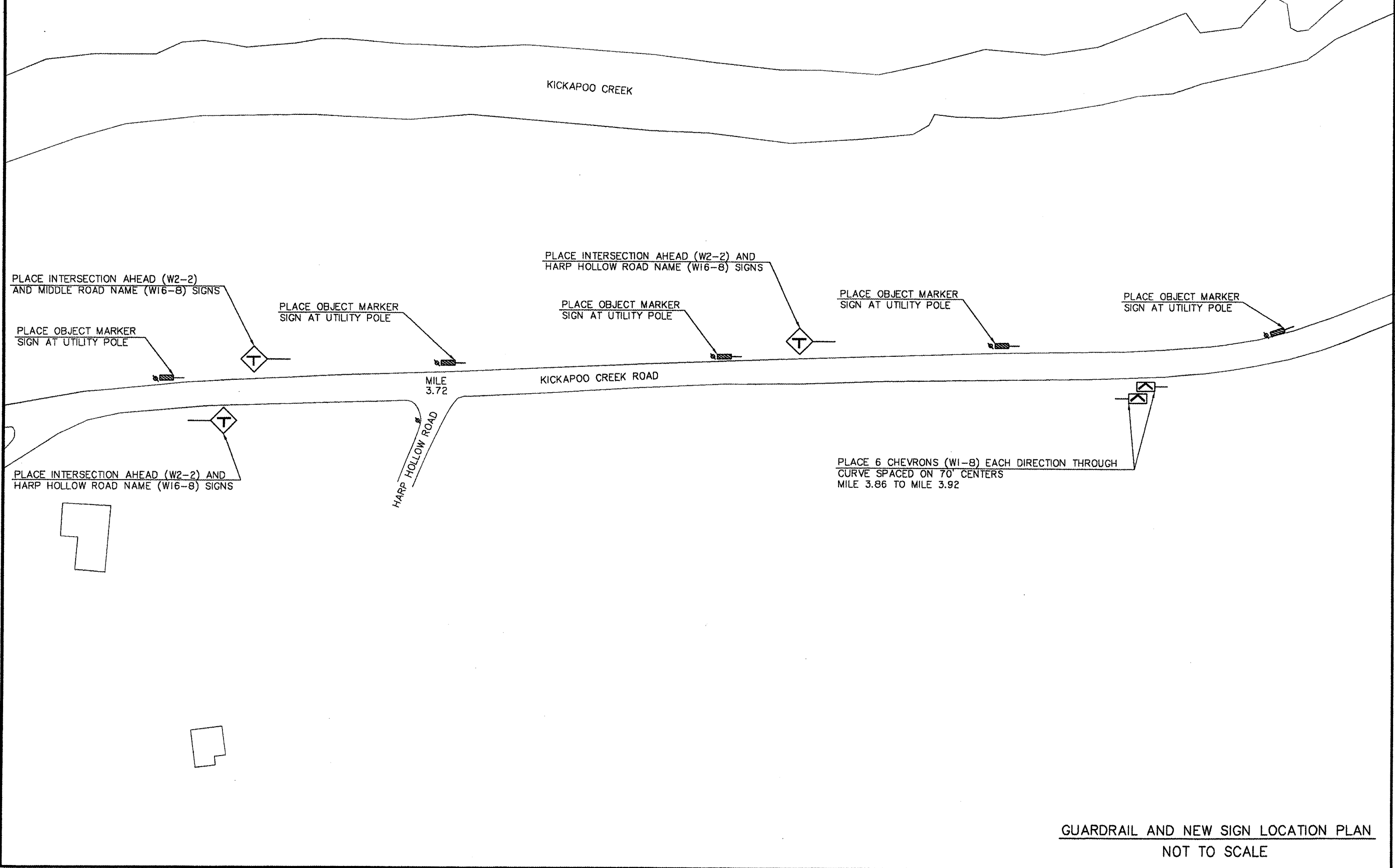
KICKAPOO CREEK ROAD

MIDDLE ROAD

MILE
3.64

GUARDRAIL AND NEW SIGN LOCATION PLAN
NOT TO SCALE

ROUTE NO.	SECTION	COUNTY	TOTAL SHEETS	SHEET NO.
FAU 6576	09-00177-00-SP	PEORIA	33	28
FED. ROAD DIST. NO.	7	ILLINOIS	PROJECT: HSP 5093 (151)	
CONTRACT NO. 89561				



GUARDRAIL AND NEW SIGN LOCATION PLAN
NOT TO SCALE

ROUTE NO.	SECTION	COUNTY	TOTAL SHEETS	SHEET NO.
FAJ 6576	09-00177-00-SP	PEORIA	33	29
FED. ROAD DIST. NO.	7	ILLINOIS	PROJECT: HSP 5093 (IS1)	
CONTRACT NO. 89561				



KICKAPOO CREEK

PLACE OBJECT MARKER
SIGN AT UTILITY POLE

MILE
4.14

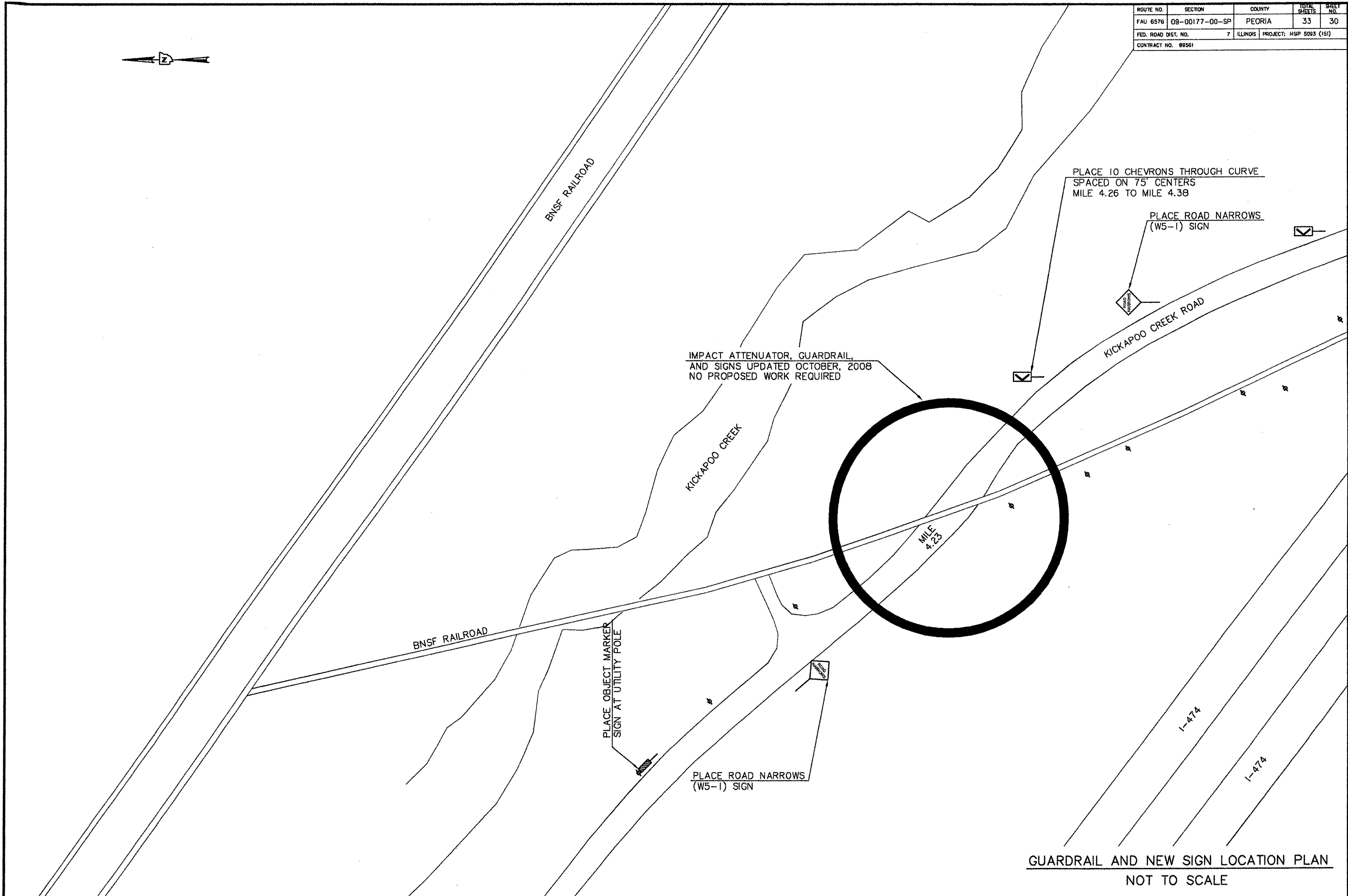
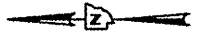
KICKAPOO CREEK ROAD

1 - 474

1 - 474

GUARDRAIL AND NEW SIGN LOCATION PLAN
NOT TO SCALE

ROUTE NO.	SECTION	COUNTY	TOTAL SHEETS	SHEET NO.
FAU 6576	08-00177-00-SP	PEORIA	33	30
FED. ROAD DIST. NO.	7 ILLINOIS PROJECT: HSP 5093 (IS)			
CONTRACT NO. 89561				



PLACE 10 CHEVRONS THROUGH CURVE
SPACED ON 75' CENTERS
MILE 4.26 TO MILE 4.38

PLACE ROAD NARROWS
(W5-1) SIGN

IMPACT ATTENUATOR, GUARDRAIL,
AND SIGNS UPDATED OCTOBER, 2008
NO PROPOSED WORK REQUIRED

PLACE OBJECT MARKER
SIGN AT UTILITY POLE

PLACE ROAD NARROWS
(W5-1) SIGN

GUARDRAIL AND NEW SIGN LOCATION PLAN
NOT TO SCALE

ROUTE NO.	SECTION	COUNTY	TOTAL SHEETS	SHEET NO.
FAU 6576	09-00177-00-SP	PEORIA	33	31
FED. ROAD DIST. NO.	7	ILLINOIS	PROJECT: HSP 5093 (IS)	
CONTRACT NO. 8561				



KICKAPOO CREEK

TRAFFIC BARRIER TERMINAL REMOVAL - 2 EACH
 EXTEND TYPE A GUARDRAIL UNDER I-474
 PROP. SPB GUARDRAIL, TY A, 9' POST - 213 FOOT
 TBT TYPE 1 (SPL) TANGENT - 2 EACH
 TERMINAL MARKER - DIRECT APPLIED - 2 EACH
 MONODIRECT GUARDRAIL REFLECTORS - 11 EACH
 MILE 4.38 TO MILE 4.48

I-474

I-474

KICKAPOO CREEK ROAD

BNSF RAILROAD

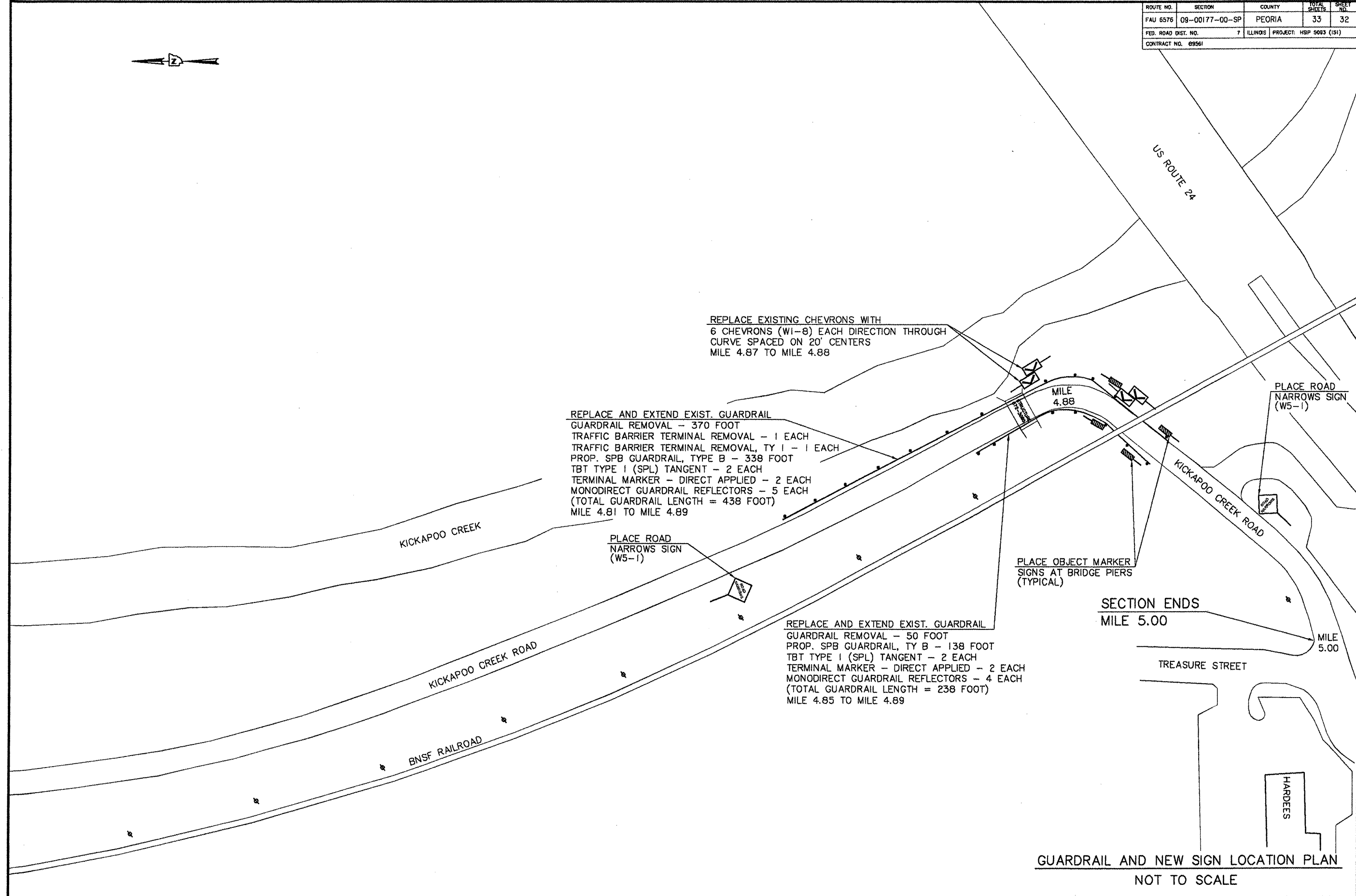
KICKAPOO CREEK ROAD

BNSF RAILROAD

PROP. SPB GUARDRAIL, TY A, 9' POST - 250 FOOT
 TBT TYPE 1 (SPL) TANGENT - 2 EACH
 TERMINAL MARKER - DIRECT APPLIED - 2 EACH
 MONODIRECT GUARDRAIL REFLECTORS - 4 EACH
 (TOTAL GUARDRAIL LENGTH = 350 FOOT)
 MILE 4.37 TO MILE 4.44

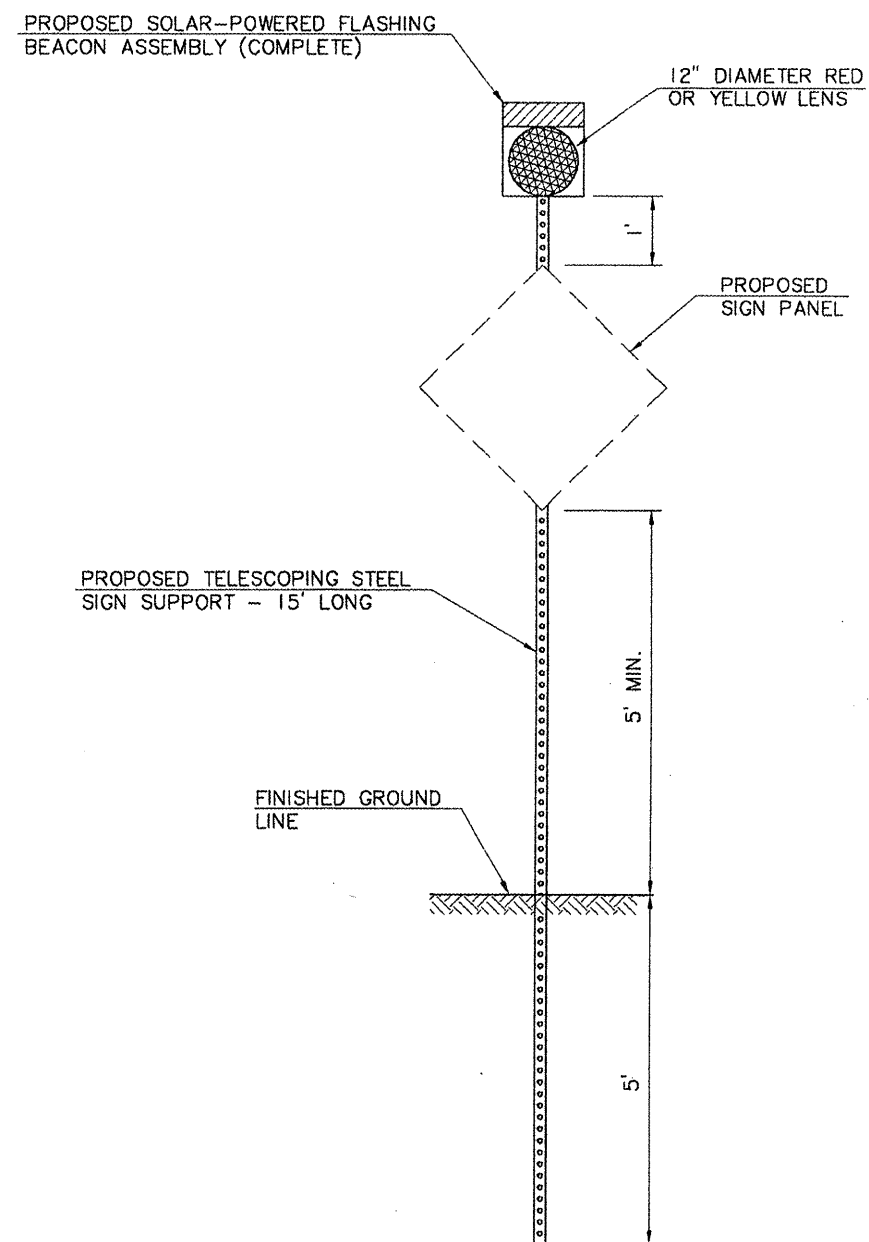
GUARDRAIL AND NEW SIGN LOCATION PLAN
 NOT TO SCALE

ROUTE NO.	SECTION	COUNTY	TOTAL SHEETS	SHEET NO.
FAU 6576	09-00177-00-SP	PEORIA	33	32
FED. ROAD DIST. NO.	7	ILLINOIS	PROJECT: HSP 5093 (151)	
CONTRACT NO. 09561				



GUARDRAIL AND NEW SIGN LOCATION PLAN
NOT TO SCALE

ROUTE NO.	SECTION	COUNTY	TOTAL SHEETS	SHEET NO.
FAU 6576	09-00177-00-SP	PEORIA	33	33
FED. ROAD DIST. NO.	7	ILLINOIS	PROJECT: HSP 5093 (151)	
CONTRACT NO.	69561			



SOLAR-POWERED FLASHING BEACON ASSEMBLY (COMPLETE)

LOCATION	COLOR	EACH
MILE 1.23	YELLOW	2
MILE 1.49	YELLOW	2
MILE 2.78	YELLOW	2
AIRPORT RD. / KICKAPOO CREEK INT.	RED	6
MILE 3.09	YELLOW	1
	TOTAL =	13

GENERAL NOTES:

THIS WORK SHALL BE IN ACCORDANCE WITH THE APPLICABLE ITEMS CONTAINED IN SECTIONS 858, 880, 1073, AND 1078 OF THE STANDARD SPECIFICATION, EXCEPT AS MODIFIED IN THE SPECIAL PROVISIONS.

THE FLASHER SHALL BE A CARMANAH MODEL R247 24-HOUR FLASHING BEACON OR A JSF TECHNOLOGIES MODEL 1400 24-HOUR FLASHING BEACON THAT MEETS OR EXCEEDS THE SPECIFICATIONS AS DESCRIBED IN THE SPECIAL PROVISIONS.

A RED LENS SHALL BE PLACED WHEN THE PROPOSED SIGN PANEL IS A STOP SIGN (R1-1).
A YELLOW LENS SHALL BE PLACED WHEN THE PROPOSED SIGN PANEL IS A WARNING SIGN (W3-1).

SOLAR POWERED FLASHING BEACON ASSEMBLY (COMPLETE)