

F.A.S. RTE.	SECTION	COUNTY	TOTAL SHEETS	SHEET NO.
1472	07-00073-09-WR	McLEAN	8	1
FED. ROAD DIST. NO. 5		ILLINOIS	CONTRACT NO. 91434	

INDEX OF SHEETS

- 1. COVER SHEET
- 2-3. TYPICAL CROSS SECTIONS
- 4-5. DETAILS
- 6-8. PLAN SHEETS

STATE STANDARD DETAILS

701001-02	OFF-RD OPERATIONS, 2L, 2W, MORE THAN 15' AWAY
701006-03	OFF-RD OPERATIONS, 2L, 2W, 15' TO 24" FROM PAVEMENT EDGE
701011-02	OFF-RD MOVING OPERATIONS, 2L, 2W, DAY ONLY
701201-03	LANE CLOSURE, 2L, 2W, DAY ONLY, FOR SPEEDS > 45 MPH
701301-03	LANE CLOSURE, 2L, 2W, SHORT TIME OPERATIONS
701326-03	LANE CLOSURE, 2L, 2W, PAVEMENT WIDENING, FOR SPEEDS > 45 MPH
701306-02	LANE CLOSURE, 2L, 2W, SLOW MOVING OPERATIONS DAY ONLY, FOR SPEEDS > 45 MPH
701901-01	TRAFFIC CONTROL DEVICES
781001-03	TYPICAL APPLICATIONS RAISED REFLECTIVE PAVEMENT MARKERS

SUMMARY OF QUANTITIES

ITEM NUMBER	ITEM	UNIT	QUANTITY
* 20200500	EARTH EXCAVATION (WIDENING)	CU YD	848
35600700	HOT-MIX ASPHALT BASE COURSE WIDENING, 6"	SQ YD	5,086
* 40600100	BITUMINOUS MATERIALS (PRIME COAT)	GALLON	4,100
* 40600300	AGGREGATE (PRIME COAT)	TON	200
* 40600625	LEVELING BINDER (MACHINE METHOD), N50	TON	2,100
40600982	HOT-MIX ASPHALT SURFACE REMOVAL - BUTT JOINT	SQ YD	286
40600990	TEMPORARY RAMP	SQ YD	40
* 40603080	HOT-MIX ASPHALT BINDER COURSE, IL-19.0, N50	TON	5,200
* 40603310	HOT-MIX ASPHALT SURFACE COURSE, MIX "C", N50	TON	2,900
* 40800010	BITUMINOUS MATERIALS (PRIME COAT)	GAL	200
* 40800030	AGGREGATE (PRIME COAT)	TON	15
* 40800050	INCIDENTAL HOT-MIX ASPHALT SURFACING	TON	250
* 44300300	AREA REFLECTIVE CRACK CONTROL TREATMENT, SYSTEM A	SQ YD	40,689
* 48101200	AGGREGATE SHOULDERS, TYPE B	TON	3,000
67100100	MOBILIZATION	L SUM	1
70103700	TRAFFIC CONTROL COMPLETE	L SUM	1
△ 78100100	RAISED REFLECTIVE PAVEMENT MARKER	EACH	190

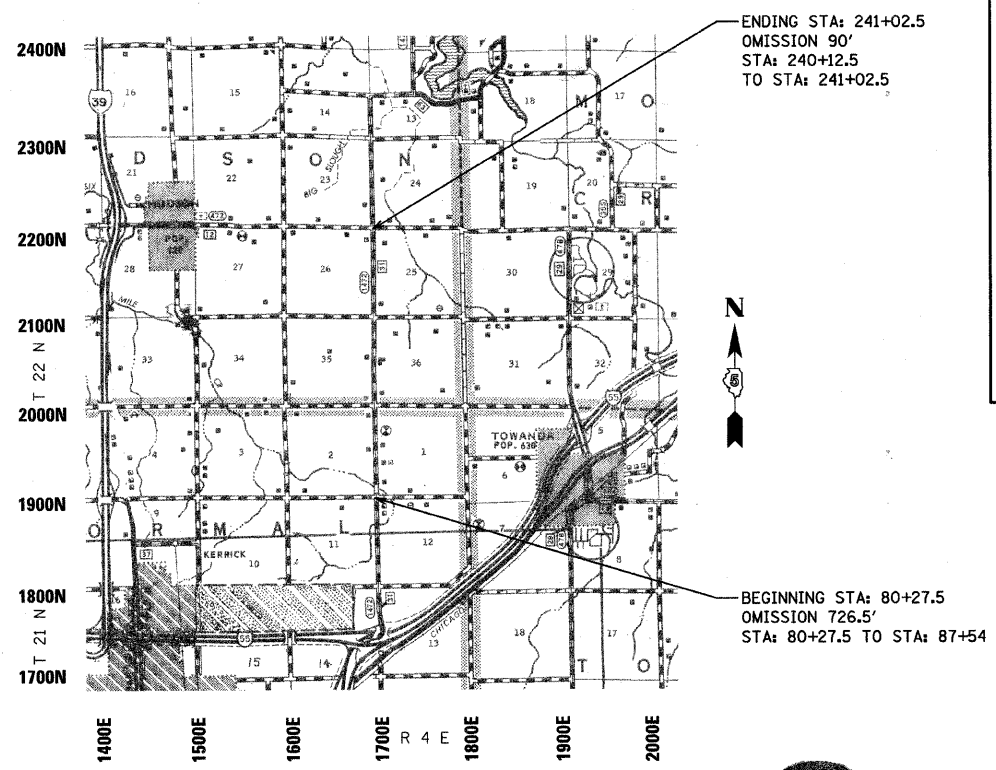
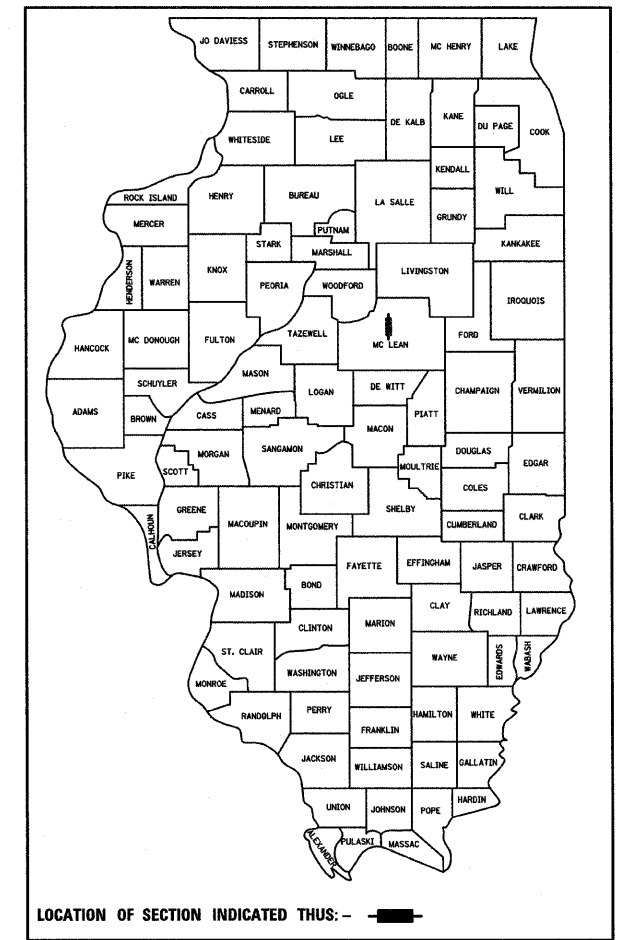
* SEE SPECIAL PROVISIONS
 △ SPECIALTY ITEMS

J.U.L.I.E.
 JOINT UTILITY LOCATION INFORMATION FOR EXCAVATION
 1-800-892-0123
 OR 811

PROJECT ENGINEER
 PROJECT MANAGER

CONTRACT NO. 91434

STATE OF ILLINOIS
 DEPARTMENT OF TRANSPORTATION
 DIVISION OF HIGHWAYS
**PLANS FOR PROPOSED
 McLEAN COUNTY
 FEDERAL AID SECONDARY (STP-SR)
 PIPELINE RD (CH 31)**
 F.A.S. ROUTE 1472 SECTION 07-00073-09-WR
 PROJECT #RS-1472(104)
 JOB #C-95-324-10



NOTE: THE TOTAL LENGTH OF THE PROPOSED PROJECT IS 16,075 FEET WITH A NET LENGTH OF 15,285.50 FEET (2.890 MILES)
 NOTE: THESE PLANS MEET THE MINIMUM REQUIREMENTS FOR A 3R IMPROVEMENT.
 NOTE: CURRENT ADT: 2100
 FUNCTIONAL CLASSIFICATION: MAJOR COLLECTOR
 NOTE: THE PLANS FOR SECTION 07-00073-09-WR ARE THOSE AS APPROVED IN SECTION 73 G.

Henry W. Stuber
 ILLINOIS PROFESSIONAL ENGINEER #57636
 EXPIRES 11-30-2011

**McLEAN COUNTY
 HIGHWAY DEPARTMENT**

APPROVED Feb. 23, 20 10
[Signature]
 COUNTY ENGINEER

PASSED 3/15 20 10
[Signature]
 DISTRICT FIVE ENGINEER OF LOCAL ROADS & STREETS

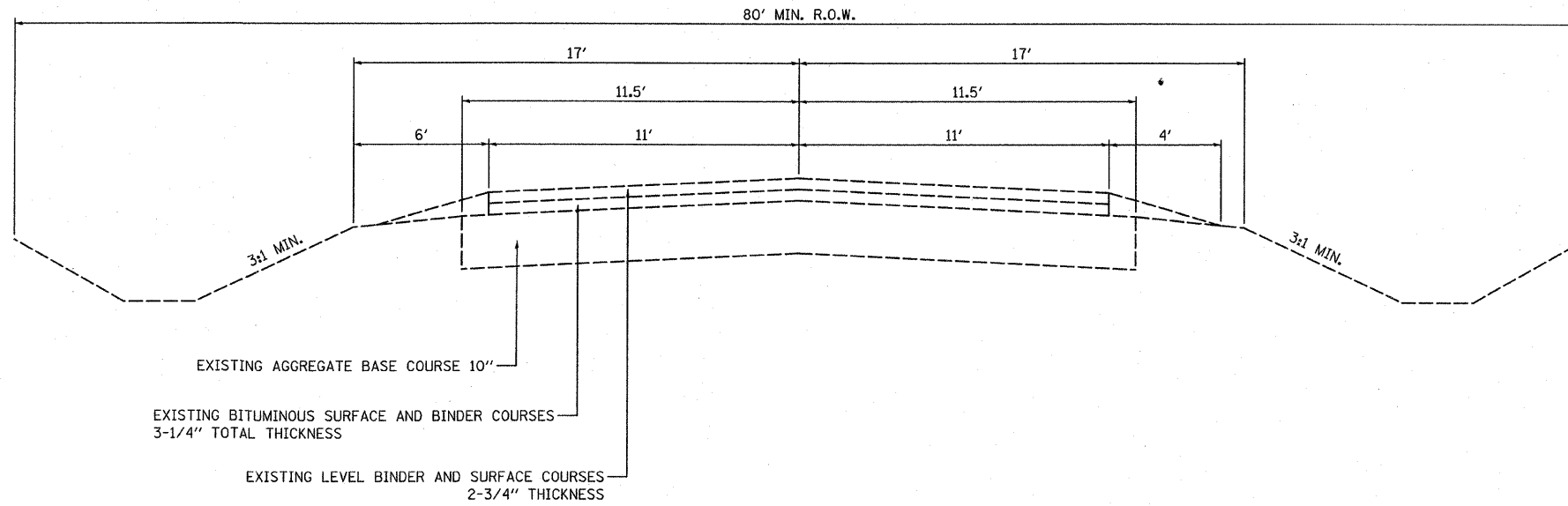
Releasing For Bid Based on Limited Review MAR 16 20 10
[Signature]
 DEPUTY DIRECTOR OF HIGHWAYS,
 REGION THREE ENGINEER

STATE OF ILLINOIS
 DEPARTMENT OF TRANSPORTATION

**PRINTED BY THE AUTHORITY
 OF THE STATE OF ILLINOIS**

CH 31 (PIPELINE ROAD) EXISTING TYPICAL CROSS SECTION

STA: 87+54 TO 240+12.5
(OMISSION STA: 80+27.5 TO STA: 87+54)
(OMISSION STA: 240+12.50 TO STA: 241+02.50)



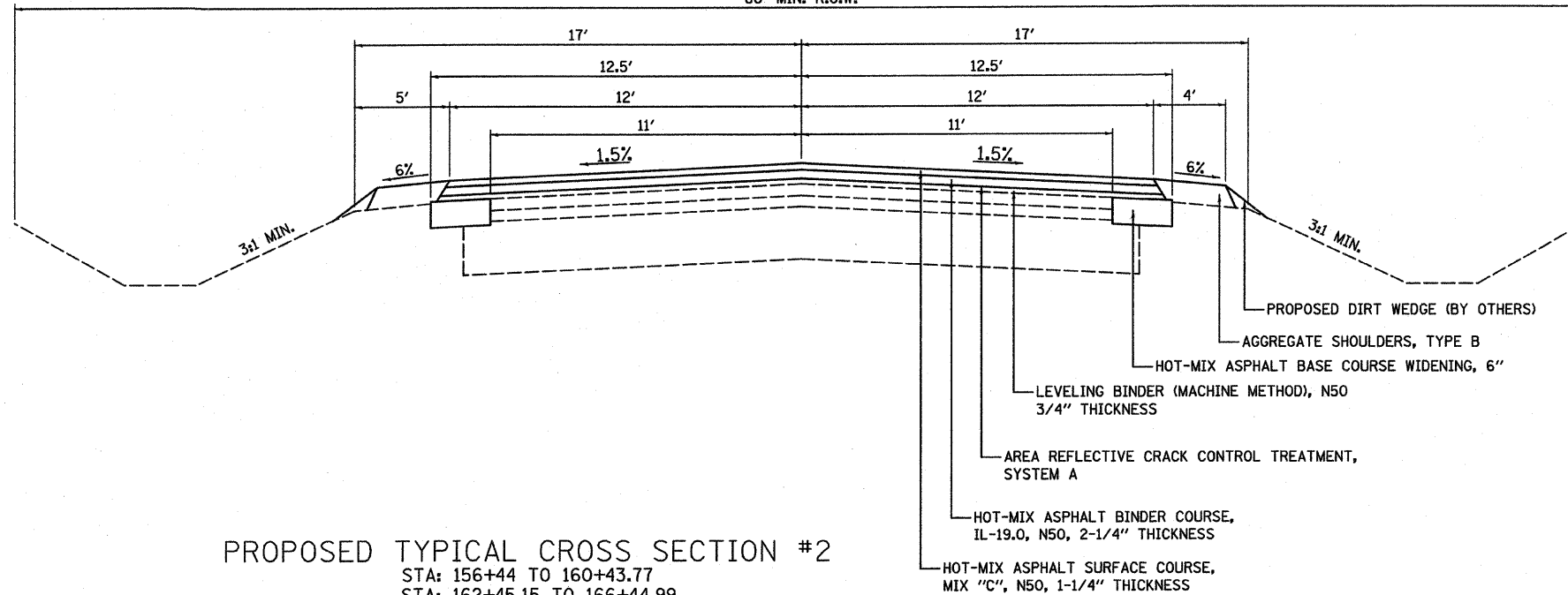
FILE NAME =	USER NAME = BUSERS	DESIGNED =	REVISED =	STATE OF ILLINOIS DEPARTMENT OF TRANSPORTATION	EXISTING TYPICAL CROSS SECTIONS	F.A. RTE.	SECTION	COUNTY	TOTAL SHEETS	SHEET NO.	
SPLELS		DRAWN = EJC	REVISED =			1472	07-00073-09-WR	McLEAN	8	2	
PLOT SCALE = SSCALR		CHECKED =	REVISED =			CONTRACT NO. 91434					
PLOT DATE = 90AT6		DATE =	REVISED =			SCALE: NO SCALE	SHEET NO. 1 OF 1 SHEETS	STA. TO STA.	FED. ROAD DIST. NO. 6	ILLINOIS	FED. AID PROJECT

PIPELINE RD (CH 31)

PROPOSED TYPICAL CROSS SECTION #1

STA: 87+54 TO 156+44
 STA: 160+43.77 TO 162+45.15
 STA: 166+44.99 TO 240+12.50
 (OMISSION STA: 80+27.50 TO STA: 87+54)
 (OMISSION STA: 240+12.5 TO STA: 241+02.50)

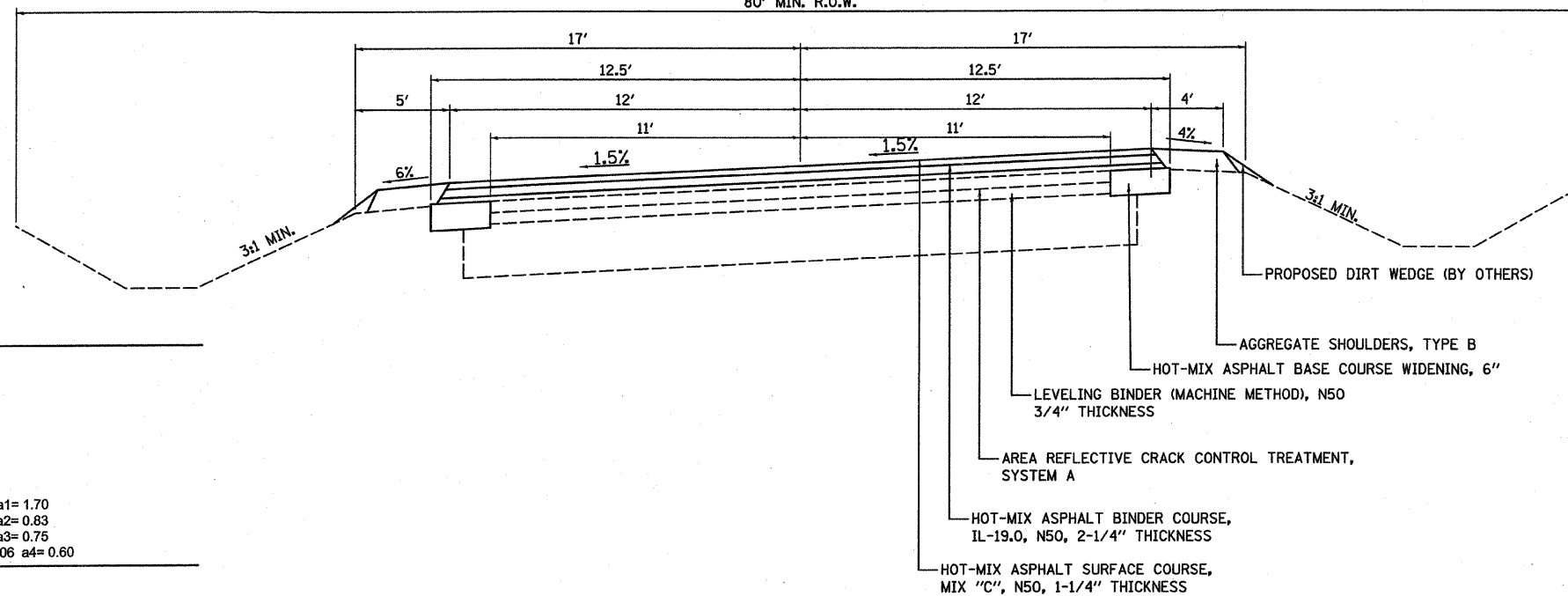
80' MIN. R.O.W.



PROPOSED TYPICAL CROSS SECTION #2

STA: 156+44 TO 160+43.77
 STA: 162+45.15 TO 166+44.99

80' MIN. R.O.W.

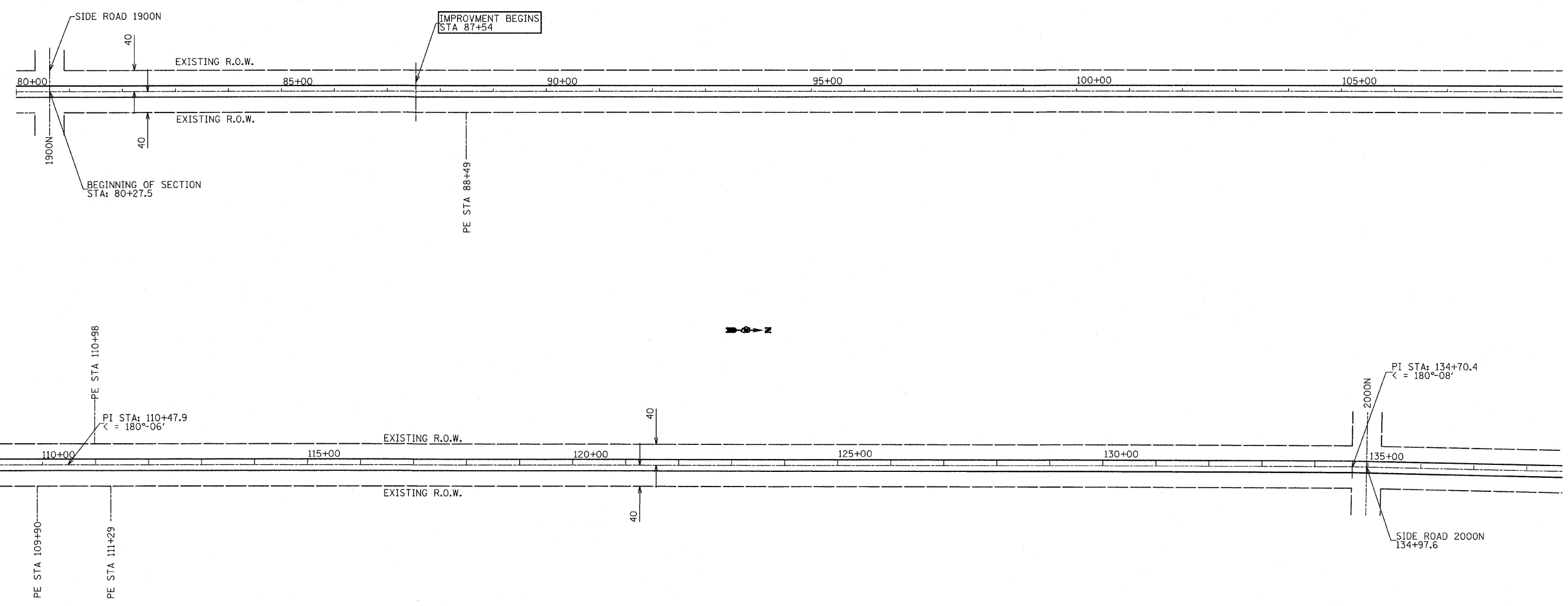


STRUCTURAL DESIGN DATA 80,000# PROPOSED TYPICAL

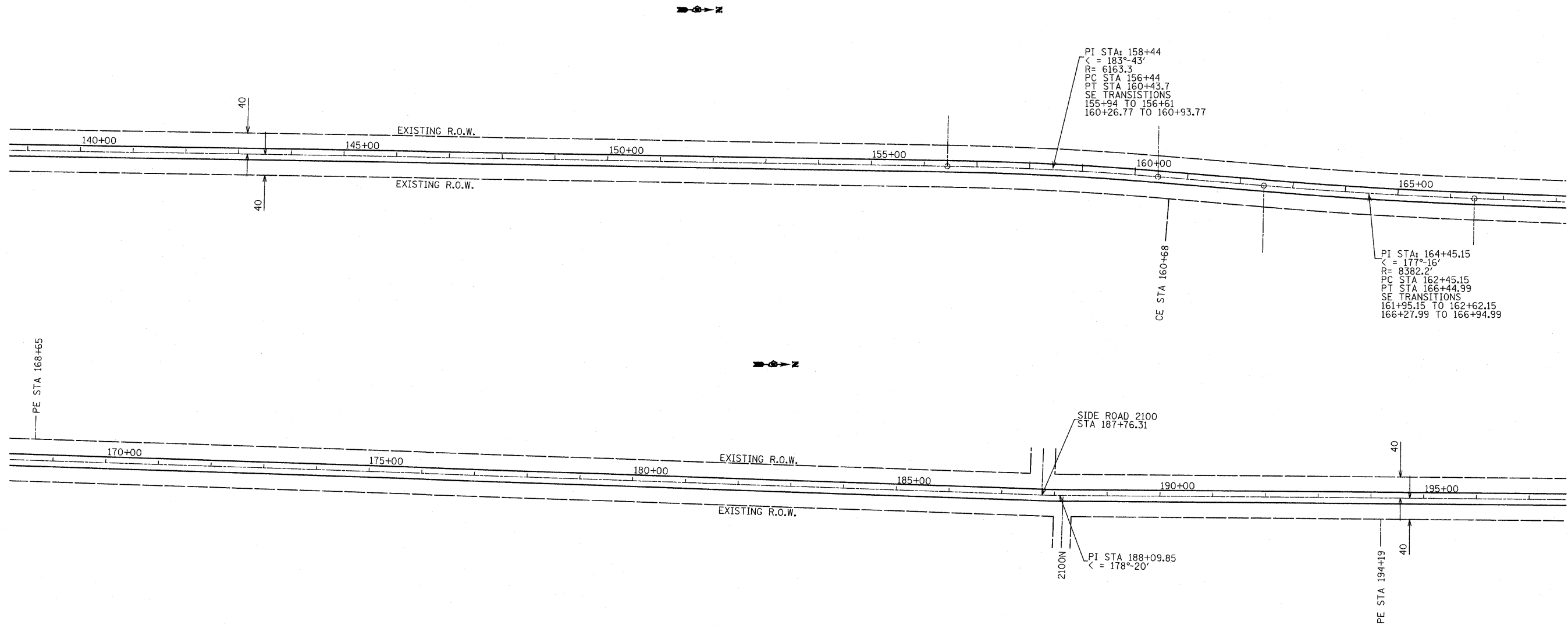
CLASS III ROAD DESIGN PERIOD 20 YEARS
 STRUCTURAL DESIGN TRAFFIC: 2440 YEAR: 2018
 PERCENT OF DESIGN TRAFFIC IN DESIGN LANE:
 P.C. 88% S.U. 7% M.U. 5%
 P.C. 2147 S.U. 171 M.U. 122
 MINIMUM SOIL SUPPORT: IBR= 3.0
 TRAFFIC FACTOR (T.F.)= 0.533
 STRUCTURAL NUMBER (D_s): 3.8
 PAVEMENT STRUCTURE MATERIALS:
 SURFACE: PROPOSED HOT-MIX ASPHALT 4.25" @ 0.40 a1= 1.70
 BASE: EXISTING BITUMINOUS CONCRETE 2.75" @ 0.30 a2= 0.83
 BASE: EXISTING BITUMINOUS CONCRETE 3.25" @ 0.23 a3= 0.75
 SUBBASE: EXISTING AGGREGATE BASE COURSE 10" @ 0.06 a4= 0.60

PROPOSED (D_s) TOTAL= 3.88

FILE NAME =	USER NAME = SUSER	DESIGNED --	REVISED --	STATE OF ILLINOIS DEPARTMENT OF TRANSPORTATION	TYPICAL CROSS SECTIONS	F.A. RTE.	SECTION	COUNTY	TOTAL SHEETS	SHEET NO.	
SPLELS		DRAWN -- EJJ	REVISED --			1472	07-00073-09-WR	McLEAN	8	3	
PLOT SCALE = SCALES		CHECKED --	REVISED --			CONTRACT NO. 91434					
PLOT DATE = SDATE		DATE --	REVISED --			SCALE: NO SCALE	SHEET NO. 1 OF 1 SHEETS	STA. TO STA.	FED. ROAD DIST. NO. 5	ILLINOIS	FED. AID PROJECT



FILE NAME = SFILES	USER NAME = JUSERS	DESIGNED =	REVISED =	STATE OF ILLINOIS DEPARTMENT OF TRANSPORTATION	PLAN SHEETS			F.A. RTE.	SECTION	COUNTY	TOTAL SHEETS	SHEET NO.
	PLOT SCALE = SCALES	CHECKED =	REVISED =					1472	07-40073-09-WR	McLEAN	8	4
	PLOT DATE = DATES	DATE =	REVISED =		SCALE: NO SCALE SHEET NO. 6 OF 8 SHEETS STA. 80+00 TO STA. 138+00			CONTRACT NO. 91434				
								ILLINOIS FED. AID PROJECT				

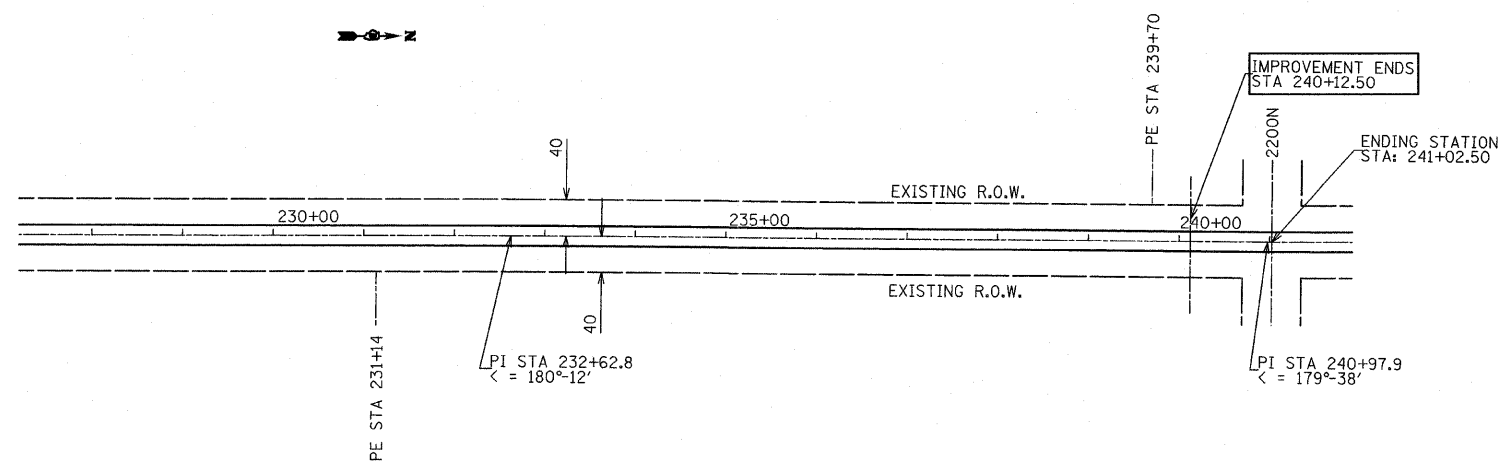
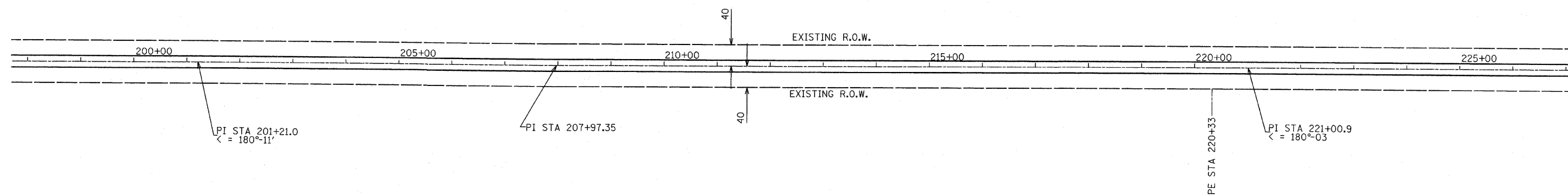


FILE NAME =	USER NAME = SUSERS	DESIGNED =	REVISED =
FILE#		DRAWN = MRA	REVISED =
	PLOT SCALE = SCALES	CHECKED =	REVISED =
	PLOT DATE = DATES	DATE =	REVISED =

**STATE OF ILLINOIS
DEPARTMENT OF TRANSPORTATION**

PLAN SHEETS		
SCALE: NO SCALE	SHEET NO. 7 OF 8 SHEETS	STA. 139+00 TO STA. 197+00

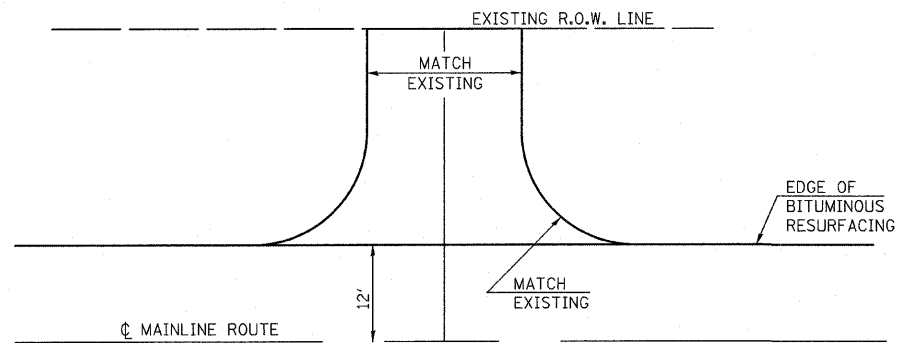
F.A. RTE.	SECTION	COUNTY	TOTAL SHEETS	SHEET NO.
1472	07-0073-09-WR	McCLEAN	8	5
CONTRACT NO. 91434				
FED. ROAD DIST. NO. 5 ILLINOIS FED. AID PROJECT				



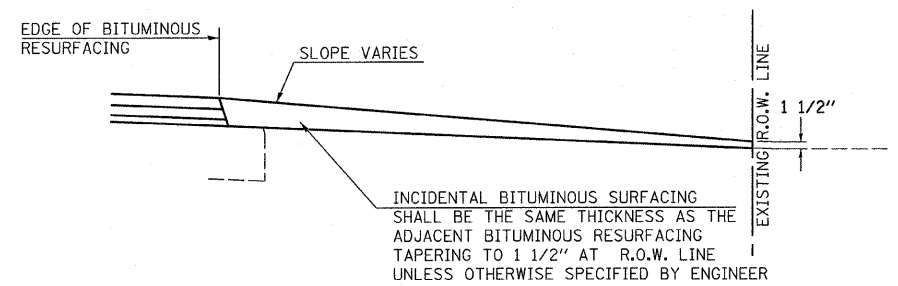
FILE NAME = FILES	USER NAME = S05ERS	DESIGNED -	REVISED -	STATE OF ILLINOIS DEPARTMENT OF TRANSPORTATION	PLAN SHEETS		F.A. RTE.	SECTION	COUNTY	TOTAL SHEETS	SHEET NO.
	PLOT SCALE = \$Scales	DRAWN - MRA	REVISED -				1472	07-00073-09-WR	McLEAN	8	6
PLOT DATE = \$DATES	CHECKED -	REVISED -	CONTRACT NO. 91434								
	DATE -	REVISED -	SCALE: NO SCALE		SHEET NO. 8 OF 8 SHEETS	STA. 198+00	TO STA. 240+97.9	FED. ROAD DIST. NO. 5	ILLINOIS	FED. AID PROJECT	

TYPICAL RURAL PRIVATE ENTRANCE

9 @ 65.8 SQ YDS EACH



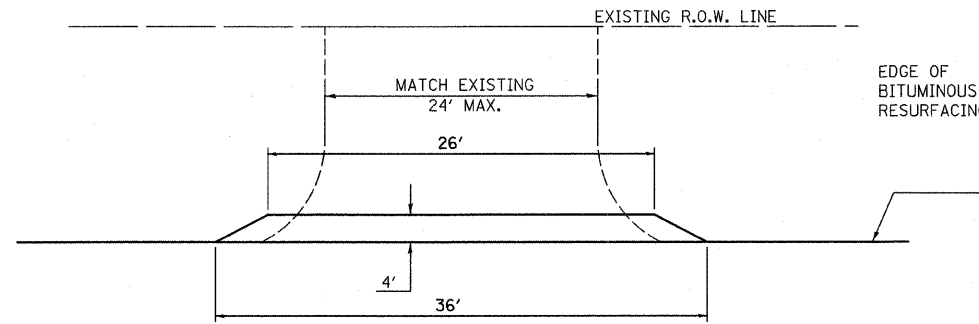
PLAN F



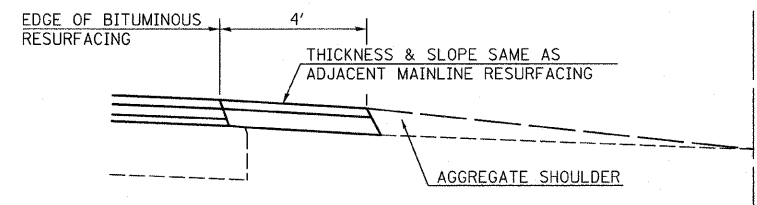
PROFILE F

TYPICAL FIELD ENTRANCE

27 @ 13.8 SQ YDS EACH



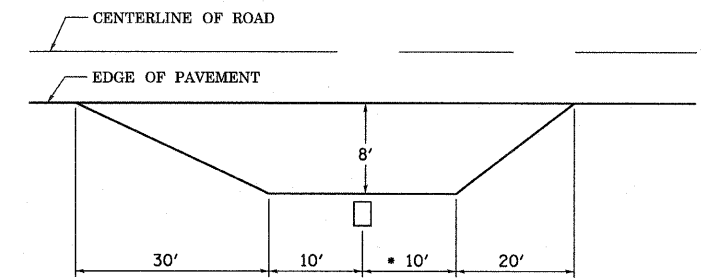
PLAN G



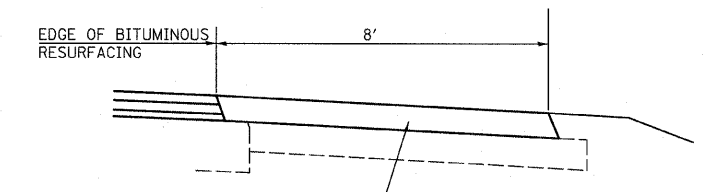
PROFILE G

TYPICAL RURAL MAILBOX TURNOUT

8 @ 41 SQ YD EACH



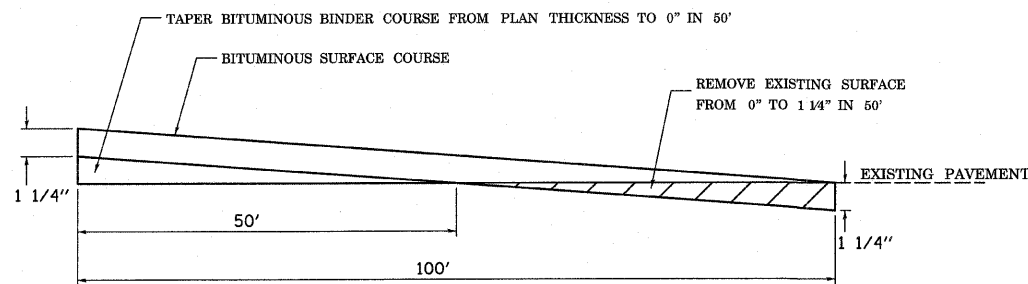
PLAN I



PROFILE I

TYPICAL BITUMINOUS SURFACE REMOVAL-BUTT JOINT

1 @ 122.2 SQ YDS STA: 87+54 (BEGINNING STATION)
 1 @ 122.2 SQ YDS STA: 240+12.5 (ENDING STATION)

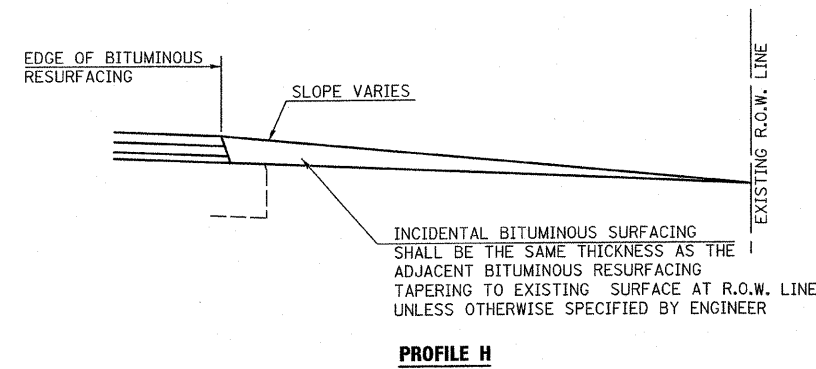
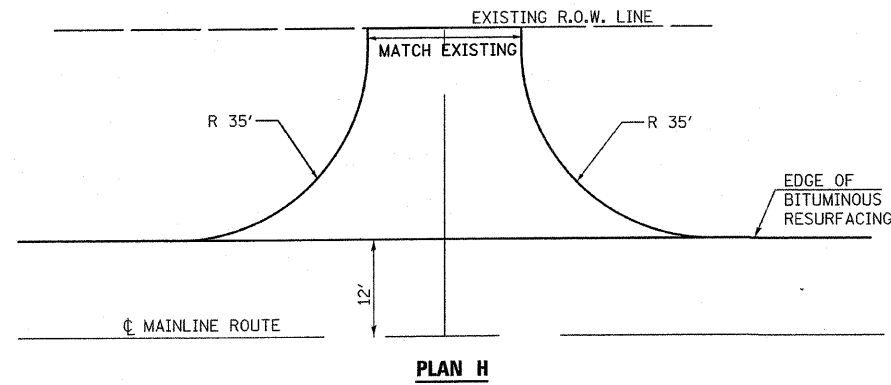


NOTES:

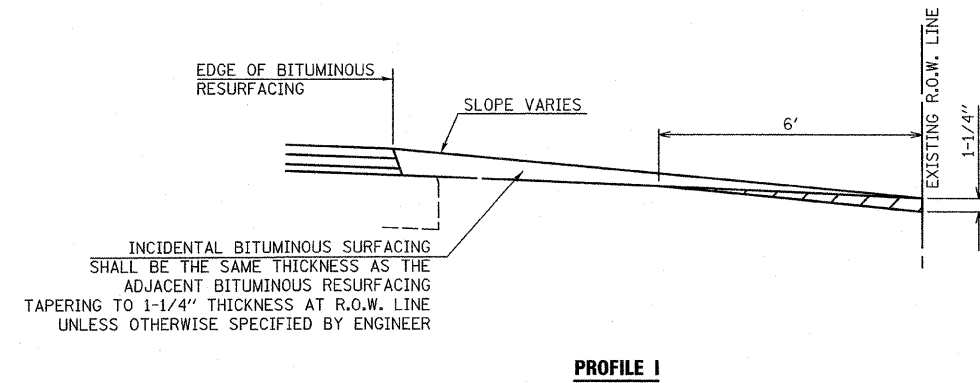
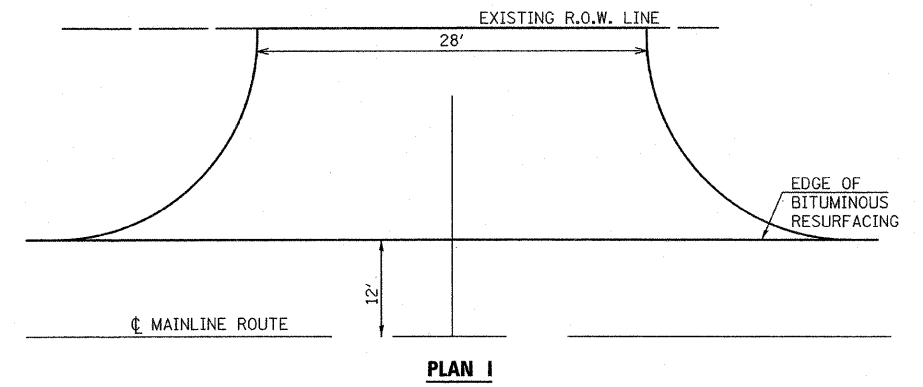
1. ALL TEMPORARY & PERMANENT PAVEMENT STRIPING WILL BE DONE BY OTHERS.
2. ALL FIELD ENTRANCES SHALL BE CONSTRUCTED WITH THE EXTENDABLE SCREED WIDENER AND PAID FROM HOT-MIX ASPHALT BINDER AND SURFACE COURSES.
3. ALL SIDE ROAD RETURNS, PRIVATE ENTRANCES, COMMERCIAL ENTRANCES AND RURAL MAILBOX TURNOUTS ARE TO BE CONSTRUCTED AND PAID FROM INCIDENTAL HOT-MIX ASPHALT SURFACING.
4. AGGREGATE SHOULDERS SHALL BE PLACED ALONG ALL SIDEROAD RETURN RADII AND COMMERCIAL ENTRANCES AND SHALL BE PLACED ALONG AND BEHIND ALL FIELD ENTRANCES, MAILBOX TURNOUTS AND ALL PRIVATE ENTRANCES UNLESS SPECIFIED BY THE RESIDENT ENGINEER.

FILE NAME =	USER NAME = SUSERS	DESIGNED =	REVISED =	STATE OF ILLINOIS DEPARTMENT OF TRANSPORTATION	DETAILS			F.A. RTE. 1472	SECTION 97-00073-09-WR	COUNTY McLEAN	TOTAL SHEETS 8	SHEET NO. 7
\$FILES	PLOT SCALE = SSCALES	DRAWN = EJG	REVISED =		SCALE: NO SCALE	SHEET NO. 1 OF 2 SHEETS	STA. TO STA.	CONTRACT NO. 91434				
	PLOT DATE = SDATES	CHECKED =	REVISED =									
		DATE =	REVISED =									

TYPICAL RURAL SIDE ROAD RETURN
4 @ 122.8 SQ YDS EACH



COMMERCIAL ENTRANCE DETAIL
ENTRANCE TO NICOR GAS
1 @ 139.4 SQ YDS



NOTES:

1. ALL TEMPORARY & PERMANENT PAVEMENT STRIPING WILL BE DONE BY OTHERS.
2. ALL FIELD ENTRANCES SHALL BE CONSTRUCTED WITH THE EXTENDABLE SCREED WIDENER AND PAID FROM HOT-MIX ASPHALT BINDER AND SURFACE COURSES.
3. ALL SIDE ROAD RETURNS, PRIVATE ENTRANCES, COMMERCIAL ENTRANCES AND RURAL MAILBOX TURNOUTS ARE TO BE CONSTRUCTED AND PAID FROM INCIDENTAL HOT-MIX ASPHALT SURFACING.
4. AGGREGATE SHOULDERS SHALL BE PLACED ALONG ALL SIDEROAD RETURN RADII AND COMMERCIAL ENTRANCES AND SHALL BE PLACED ALONG AND BEHIND ALL FIELD ENTRANCES, MAILBOX TURNOUTS AND ALL PRIVATE ENTRANCES UNLESS SPECIFIED BY THE RESIDENT ENGINEER.

FILE NAME = \$FILES	USER NAME = \$USERS	DESIGNED -	REVISED -	STATE OF ILLINOIS DEPARTMENT OF TRANSPORTATION	DETAILS			F.A.S. RTE.	SECTION	COUNTY	TOTAL SHEETS	SHEET NO.
	PLOT SCALE = \$SCALES	CHECKED -	REVISED -					1472	07-00073-09-WR	McLEAN	8	8
	PLOT DATE = \$DATES	DATE -	REVISED -		SCALE: NO SCALE SHEET NO. 2 OF 2 SHEETS STA. TO STA.			CONTRACT NO. 91434				
								FED. ROAD DIST. NO. 5 ILLINOIS FED. AID PROJECT				