

ROUTE NO.	SECTION	COUNTY	TOTAL SHEETS	SHEET NO.
C.H. 3A	05-00065-00-BR	BROWN	24	1
FED. ROAD DIST. NO.		ILLINOIS	CONTRACT NO. 93509	

STATE OF ILLINOIS
DEPARTMENT OF TRANSPORTATION
DIVISION OF HIGHWAYS

PLANS FOR PROPOSED
AMERICAN RECOVERY & REINVESTMENT ACT

PROJECT ARA-1583(103)
SECTION 05-00065-00-BR
C.H. 3A /FAS 1583
BROWN COUNTY
EXISTING STRUCTURE NO. 005-3006
C-96-228-07

INDEX OF SHEETS

SHEET NO.	DESCRIPTION
1.	COVER SHEET
2.	SUMMARY OF QUANTITIES AND GENERAL NOTES
3.	TYPICAL SECTIONS
4.	PLAN AND PROFILE
5.-11.	STATION CROSS SECTIONS
12.-24.	BRIDGE PLANS

HIGHWAY STANDARDS:

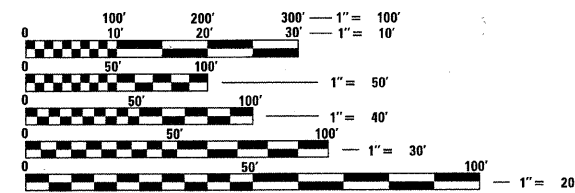
000001-05	STANDARD SYMBOLS, ABBREVIATIONS, AND PATTERNS
515001-03	NAME PLATE FOR BRIDGES
630301-05	SHOULDER WIDENING FOR TYPE 1 (SPECIAL) GUARDRAIL TERMINALS
631011-06	TRAFFIC BARRIER TERMINAL, TYPE 2
635011-02	REFLECTOR MARKER AND MOUNTING DETAILS
635006-03	REFLECTOR AND TERMINAL MARKER PLACEMENT
701901-01	TRAFFIC CONTROL DEVICES
BLR 21-8	TYPICAL APPLICATION OF TRAFFIC CONTROL DEVICES FOR CONSTRUCTION ON RURAL LOCAL HIGHWAYS
BLR 23-3	TRAFFIC BARRIER TERMINAL, TYPE 1
BLR 26-2	STEEL PLATE BEAM GUARDRAIL, 27 1/2" HEIGHT
BLR 27-1	TRAFFIC BARRIER TERMINAL, TYPE 5A

UTILITIES

RIPLEY WATER SYSTEM

VERIZON, NORTH
110 EAST MONROE
PO BOX 2675
BLOOMINGTON, IL 61701-2675

ADAMS ELECTRIC COOP
US 24 EAST
CAMP POINT, IL 62320



FULL SIZE PLANS HAVE BEEN PREPARED USING STANDARD ENGINEERING SCALES. REDUCED SIZED PLANS WILL NOT CONFORM TO STANDARD SCALES. IN MAKING MEASUREMENTS ON REDUCED PLANS, THE ABOVE SCALES MAY BE USED.



LOCATION OF SECTION INDICATED THUS: - ■ -

FUNCTIONAL CLASSIFICATION: MAJOR COLLECTOR (NON-URBAN)
DESIGN SPEED: 30 MPH
DESIGN TRAFFIC: 315 ADT (2029)

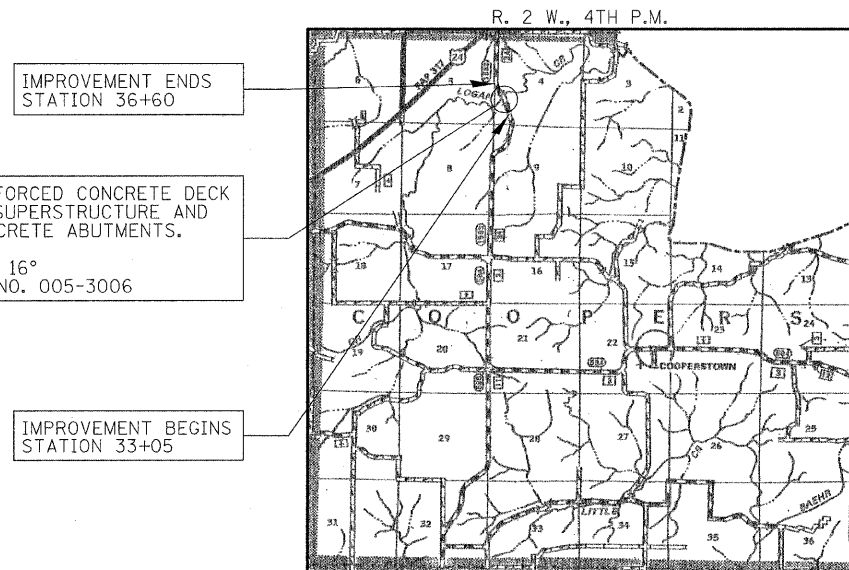
AGENCY RESPONSIBLE FOR LETTING

APPROVED 4-9-2010
Harold J. Timmons
COUNTY ENGINEER

PASSED April 13, 2010
Tamara H. Fountain
DISTRICT SIX ENGINEER OF LOCAL ROADS & STREETS

PASSED April 13, 2010
Ron Chamberlain
DISTRICT SIX ENGINEER OF CONSTRUCTION

Releasing For Bid Based on Limited Review
April 13, 2010
Roger L. Driskell
DEPUTY DIRECTOR OF HIGHWAYS
REGION FOUR ENGINEER
STATE OF ILLINOIS
DEPARTMENT OF TRANSPORTATION



IMPROVEMENT ENDS STATION 36+60

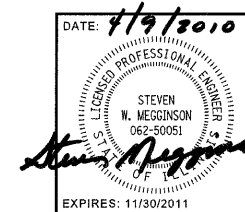
STA. 35+10.56 - REINFORCED CONCRETE DECK ON STEEL W.F. BEAM SUPERSTRUCTURE AND EXISTING CLOSED CONCRETE ABUTMENTS. TWO SPANS @ 42'-0" 26'-0" RDWY.; SKEW = 16° EXISTING STRUCTURE NO. 005-3006

IMPROVEMENT BEGINS STATION 33+05

LOCATION MAP

APPROXIMATE SCALE: 0 1 MILE
NET LENGTH OF SECTION = 355.00 FEET = 0.067 MILES

CONTRACT NO. 93509



DATE: 4/9/2010

HAMPTON, LENZINI AND RENWICK, INC.
CIVIL ENGINEERS - STRUCTURAL ENGINEERS - LAND SURVEYORS
3085 STEVENSON DRIVE, SUITE 201
SPRINGFIELD, ILLINOIS 62703
217.546.3400 www.hlrengineering.com

184.000959
ILLINOIS PROFESSIONAL DESIGN FIRM LS / PE / SE CORPORATION

EXPIRES: 11/30/2011 PROJECT NUMBER: 08.0204.130 DATE: 04/09/10