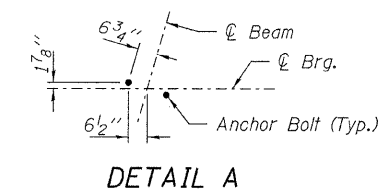
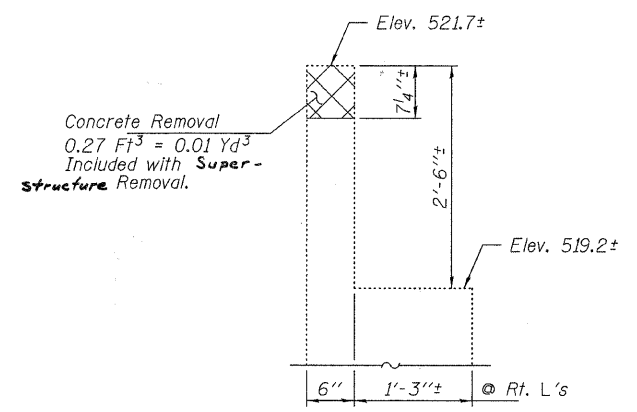


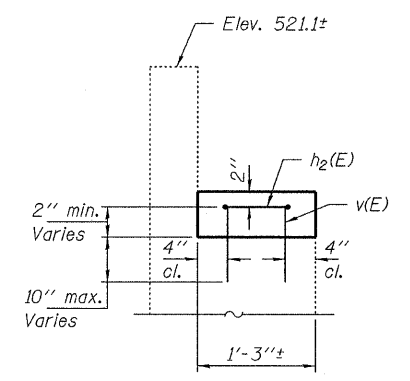
PLAN



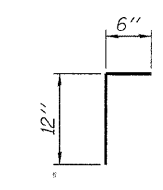
DETAIL A



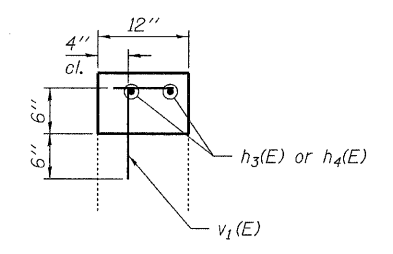
SECTION A-A



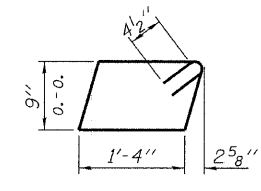
SECTION B-B



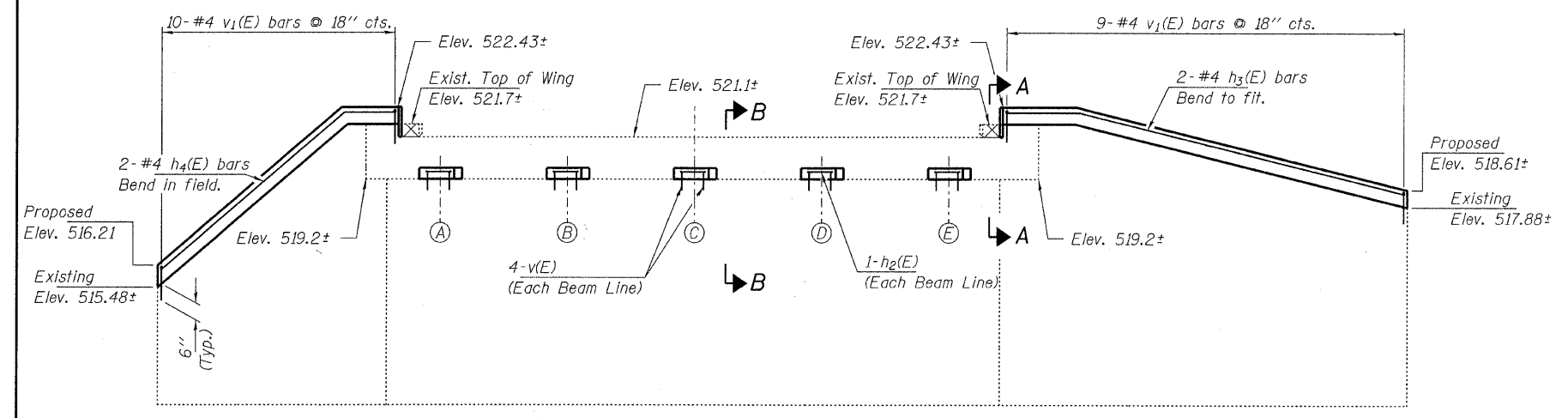
BAR v1(E)



SECTION C-C



BAR h2(E)



ELEVATION
(Looking South)

BEARING SEAT ELEVATIONS

LINE	ELEVATION
A	519.57
B	519.68
C	519.80
D	519.68
E	519.57

BILL OF MATERIAL - S. ABUT.

BAR	NO.	SIZE	LENGTH	SHAPE
h2(E)	5	#4	4'-11"	□
h3(E)	2	#4	12'-8"	—
h4(E)	2	#4	13'-7"	—
v(E)	20	#4	1'-0"	—
v1(E)	19	#4	1'-6"	└
Concrete Structures			Cu. Yd.	1.0
Reinforcement Bars, Epoxy Coated			Pound	80

Reinforcement bars designated (E) shall be epoxy coated.

Hatched area indicates Concrete Removal. Cost included with Removal of Existing Concrete Deck.

DESIGNED - A.S.L.
CHECKED - S.W.M.
DRAWN - D.A.B.
CHECKED - S.W.M.

HAMPTON, LENZINI & RENWICK, INC.
CIVIL & STRUCTURAL ENGINEERS
LAND SURVEYORS

HLR 3085 STEVENSON DRIVE, SUITE 201
SPRINGFIELD, ILLINOIS 62703
(217) 546-3400

PROJECT NUMBER: 08.0204.130 DATE: 04/09/10

C.H.	SECTION	COUNTY	TOTAL SHEETS	SHEET NO.
3A	05-00065-00-BR	BROWN	24	23
CONTRACT NO. 93509				
FED. ROAD DIST. NO.		ILLINOIS FED. AID PROJECT ARA 1583(103)		

**SOUTH ABUTMENT
STRUCTURE NO. 005-3006**