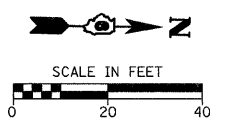
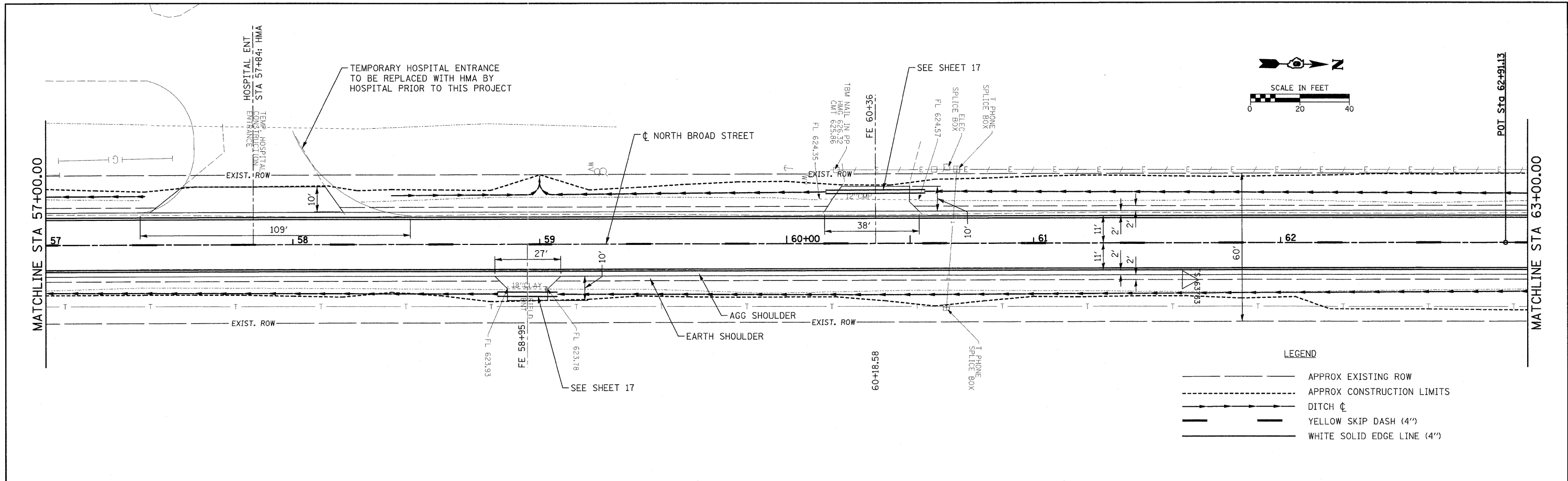


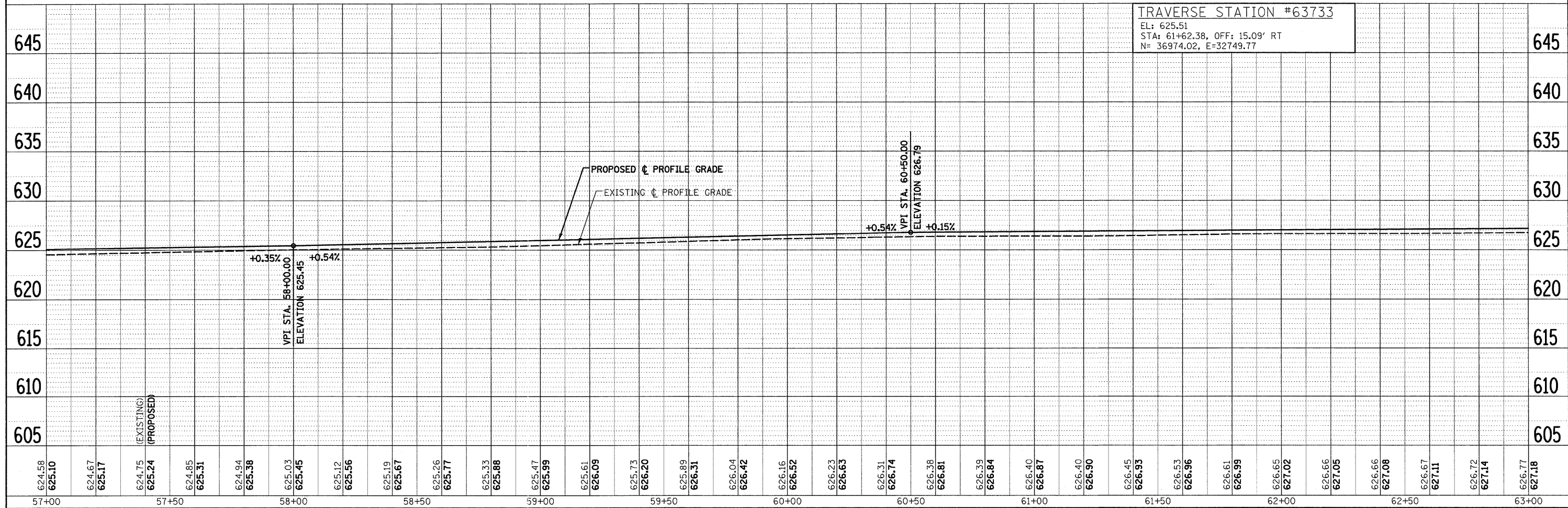
PLAN	DESIGNED	BY	DATE
NOTE BOOK	CHECKED		
NO.	NO.		

PROFILE	DESIGNED	BY	DATE
NOTE BOOK	CHECKED		
NO.	NO.		



LEGEND

- APPROX EXISTING ROW
- - - APPROX CONSTRUCTION LIMITS
- - - DITCH C
- - - YELLOW SKIP DASH (4")
- WHITE SOLID EDGE LINE (4")



TRAVERSE STATION #63733
 EL: 625.51
 STA: 61+62.38, OFF: 15.09' RT
 N= 36974.02, E=32749.77

FILE NAME =	USER NAME = .USERDESCR.	DESIGNED - DLD	REVISED -	STATE OF ILLINOIS DEPARTMENT OF TRANSPORTATION	NORTH BROAD STREET	F.A.I. 8277	SECTION 09-00036-00-RS	COUNTY MACOUPIN	TOTAL SHEETS 38	SHEET NO. 12
CONTRACT NO. 93528	ILLINOIS FED. AID PROJECT	PLOT SCALE = 20,000' / IN.	CHECKED -			SCALE:	SHEET NO. OF SHEETS STA. TO STA.			
		DATE -	REVISED -							