

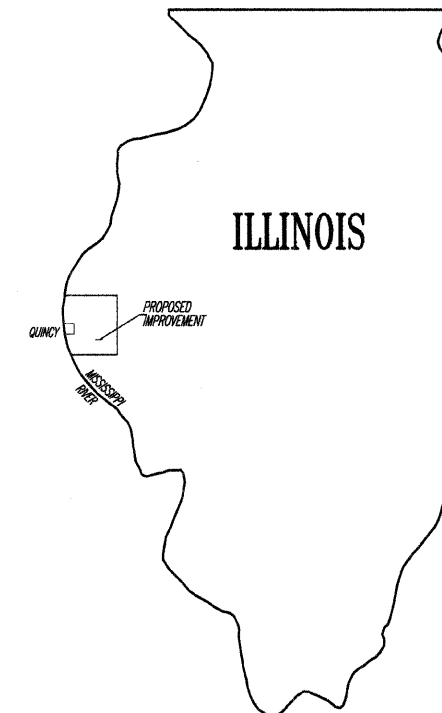
COUNTY	ROUTE	SECTION	TOTAL SHEETS	SHEET NO.
ADAMS	FAS 1603	10-00205-01-RS	12	1

INDEX OF SHEETS:

SHEET NO.	SHEET
1	TITLE SHEET
2	SUMMARY OF QUANTITIES
	GENERAL NOTES
3	TYPICAL CROSS SECTIONS
4-11	PLAN SHEETS
12	SIDE ROAD & ENTRANCE DETAILS
	BUTT JOINT DETAIL
STANDARD	701001-02
STANDARD	701006-03
STANDARD	701301-03
STANDARD	701306-02
STANDARD	701901-01
STANDARD	BLR 24-2

STATE OF ILLINOIS
DEPARTMENT OF TRANSPORTATION
DIVISION OF HIGHWAYS
PLANS FOR PROPOSED
SURFACE TRANSPORTATION/RURAL PROGRAM
LOCAL AGENCY PAVEMENT PRESERVATION

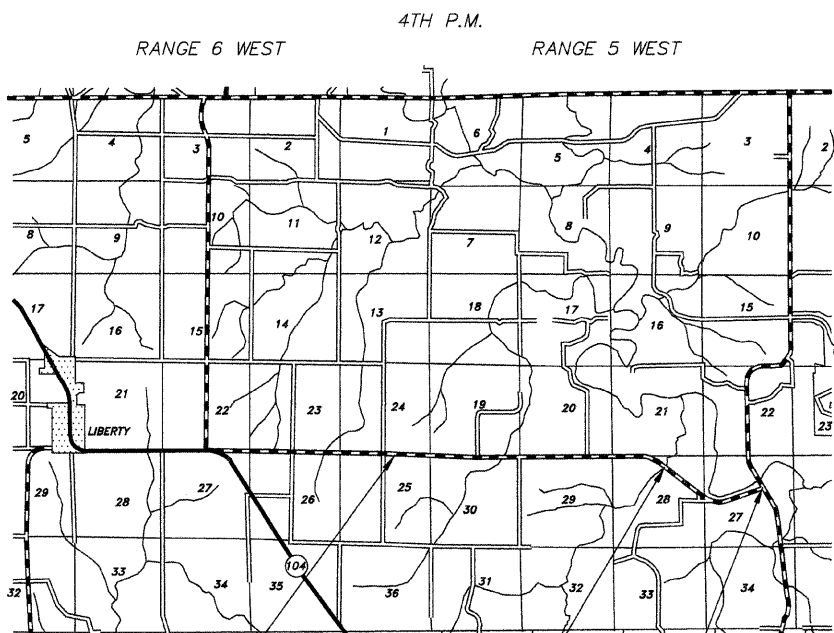
FAS 1603 (CH 39) SECTION 10-00205-01-RS ADAMS COUNTY
PROJECT NO. RS-1603(102) JOB NO. C-96-258-10



PROPOSED IMPROVEMENT MARKED THUS —

THESE PLANS WERE PREPARED BY ME OR BY A FULL-TIME MEMBER OF MY STAFF WORKING UNDER MY PERSONAL SUPERVISION.

SUBMITTED BY *Rick A. Kluge* DATE 3-28-10
COUNTY ENGINEER
LICENSE NO. 062-032961
LIC. EXPIRES 11/30/2012

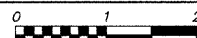


STATION 105+60
SEC. 10-00205-01-RS
BEGINS

EXISTING
SN 001-3306

STATION 334+36.50
SEC. 10-00205-01-RS
ENDS

LOCATION MAP



FUNCTIONAL CLASS: MAJOR COLLECTOR (NON-URBAN)
ADT=275

PROPOSED IMPROVEMENT CONSISTS OF PLACING 1 1/2" POLYMERIZED HOT-MIX ASPHALT SURFACE COURSE, MIX "C", N50 OVER 3/4" OF LEVELING BINDER (MACHINE METHOD) N50 ON THE EXISTING 22' ROADWAY WITH OTHER MISCELLANEOUS CONSTRUCTION

UTILITIES:

J.U.L.I.E.	1-800-892-0123
AMERITECH	QUINCY, IL
ADAMS RURAL ELECTRICAL CO-OP	CAMP POINT, IL
ABS WATER DISTRICT	GOLDEN, IL
McLEOD USA	SPRINGFIELD, IL

GROSS LENGTH:
STA. 105+60.00 TO STA. 334+36.50 = 22,876.50 FT.

BRIDGE OMISSION (001-3306):
STA. 267+30.92 TO STA. 268+09.08 = 78.16 FT.

NET LENGTH TO BE IMPROVED: 22,798.34 FT. = 4.318 MILES

APPROVED <u><i>Rick A. Kluge</i></u> 2010	2010
<u><i>Rick A. Kluge</i></u>	COUNTY ENGINEER
PASSED <u>March 15</u> 2010	2010
<u><i>Ron Buchanan</i></u>	DISTRICT ENGINEER OF CONSTRUCTION
PASSED <u>March 16</u> 2010	2010
<u><i>Terrence H. Fountain</i></u> ***	DISTRICT ENGINEER OF LOCAL ROADS AND STREETS
RELEASING FOR BID BASED ON LIMITED REVIEW <u>March 16</u> 2010	2010
<u><i>Roger L. Driskell</i></u> ***	DEPUTY DIRECTOR OF HIGHWAYS REGION FOUR ENGINEER
STATE OF ILLINOIS DEPARTMENT OF TRANSPORTATION	

CONTRACT NO. **93533**

COUNTY	ROUTE	SECTION	TOTAL SHEETS	SHEET NO.
ADAMS	FAS 1603	10-00205-01-RS	12	2

SUMMARY OF QUANTITIES - GENERAL NOTES

PROJECT NO. RS-1603(102)

GENERAL NOTES

- WHERE SECTION OR SUB-SECTION STONES, USGS BENCH MARK MONUMENTS, AND U.S. ARMY CORPS OF ENGINEERS SURVEY MARKERS ARE ENCOUNTERED, THE ENGINEER SHALL BE NOTIFIED BEFORE SUCH STONES AND MONUMENTS ARE REMOVED. THE CONTRACTOR SHALL PROTECT AND CAREFULLY PRESERVE ALL PROPERTY MARKS UNTIL AN OWNER, AN AUTHORIZED SURVEYOR OR THEIR REPRESENTATIVE HAS WITNESSED OR OTHERWISE REFERENCED THE PROPERTY MARKS LOCATION.
- ALL PRIVATELY OWNED UTILITIES, UNLESS OTHERWISE SPECIFIED, WILL BE MOVED BY THEIR RESPECTIVE OWNERS WHERE REQUIRED. THE FOLLOWING UTILITY COMPANIES HAVE FACILITIES WITHIN THE LIMITS OF CONSTRUCTION:

J.U.L.I.E.
ADAMS RURAL ELECTRICAL CO-OP
ABS WATER DISTRICT
AMERITECH
McLEOD USA
- THE NOMINAL THICKNESS FOR THE LEVELING BINDER, SURFACE COURSES AND AGGREGATE SHOULDERS ARE SHOWN ON THE TYPICAL SECTIONS, STANDARDS, SCHEDULES OR SPECIAL DETAILS. THE CONSTRUCTED THICKNESS OF THE ABOVE ITEMS SHALL NOT BE LESS THAN 90% OF THE NOMINAL THICKNESS AT ANY LOCATION. THE THICKNESS OF THE HOT-MIX ASPHALT MIXTURE SHOWN ON THE PLANS IS THE NOMINAL THICKNESS. DEVIATIONS FROM THE NOMINAL THICKNESS WILL BE PERMITTED WHEN SUCH DEVIATIONS OCCUR DUE TO IRREGULARITIES IN THE EXISTING SURFACE OR BASE WHICH THE HOT-MIX ASPHALT MIXTURE IS PLACED.
- THE CONTRACTOR SHALL BE RESPONSIBLE FOR DETERMINING THE LOCATION AND ELEVATION OF ALL EXISTING UTILITIES AND TO NOTIFY ALL UTILITY COMPANIES PRIOR TO THE BEGINNING OF CONSTRUCTION. THIS WILL BE CONSIDERED INCIDENTAL TO THE CONTRACT.
- APPLICATION RATES SHALL BE AS FOLLOWS UNLESS OTHERWISE SPECIFIED BY THE ENGINEER:

HOT-MIX ASPHALT MIXTURES
112 LBS PER SQUARE YARD
BITUMINOUS MATERIALS (PRIME COAT)
0.05-0.10 GALLON PER SQUARE YARD ON PCC OR BITUMINOUS CONCRETE
0.25-0.35 GALLON PER SQUARE YARD ON AGGREGATE
AGGREGATE (PRIME COAT)
4 LBS PER SQUARE YARD
- PERMANENT & TEMPORARY PAVEMENT MARKING TO BE DONE BY OTHERS. SHORT TERM PAVEMENT MARKING IS INCLUDED IN THE CONTRACT. THE REMOVAL OF THE SHORT TERM PAVEMENT MARKING TAPE WILL BE DONE BY OTHERS UPON COMPLETION OF THE PERMANENT PAVEMENT MARKING.

SUMMARY OF QUANTITIES

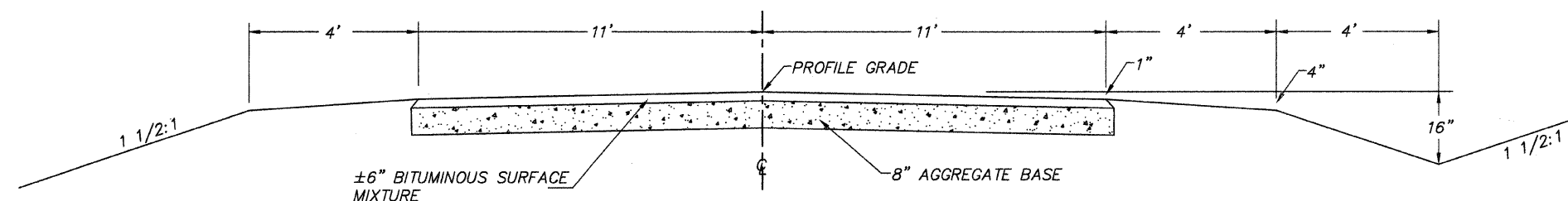
QUANTITY	UNIT	ITEM	CODE NO.	SPECIAL PROVISIONS
5,320	GALLON	BITUMINOUS MATERIALS (PRIME COAT)	40600100	*
106	TON	AGGREGATE (PRIME COAT)	40600300	
3,673	TON	LEVELING BINDER (MACHINE METHOD), N50	40600625	*
1	EACH	CONSTRUCTING TEST STRIP	40600895	
396	SQ. YD.	HOT-MIX ASPHALT SURFACE REMOVAL - BUTT JOINT	40600982	*
82	SQ. YD.	TEMPORARY RAMP	40600990	
104	TON	HOT-MIX ASPHALT SURFACE COURSE, MIX "C", N50	40603310	*
4,474	TON	POLYMERIZED HOT-MIX ASPHALT SURFACE COURSE, MIX "C", N50	40603510	*
1	L. SUM	MOBILIZATION	67100100	
1	L. SUM	TRAFFIC CONTROL AND PROTECTION	70101700	*
4,144	FOOT	SHORT TERM PAVEMENT MARKING	70300100	*

CONSTRUCTION TYPE CODE: I000

COUNTY	ROUTE	SECTION	TOTAL SHEETS	SHEET NO.
ADAMS	FAS 1603	10-00205-01-RS	12	3

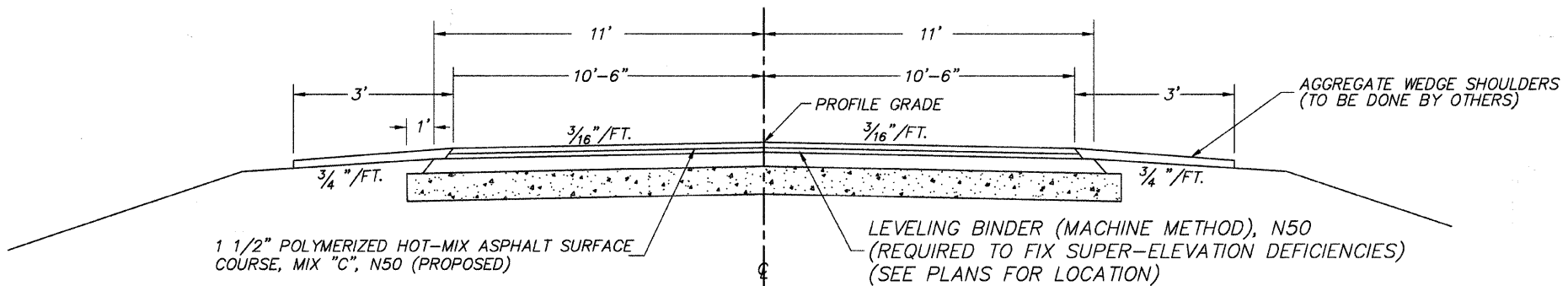
TYPICAL CROSS SECTIONS
PROJECT NO. RS-1603(102)

TYPICAL CROSS SECTIONS



EXISTING CROSS SECTION

BUILT AS: SECTION 26-A-15d
STA. 105+60 TO STA. 334+36.50

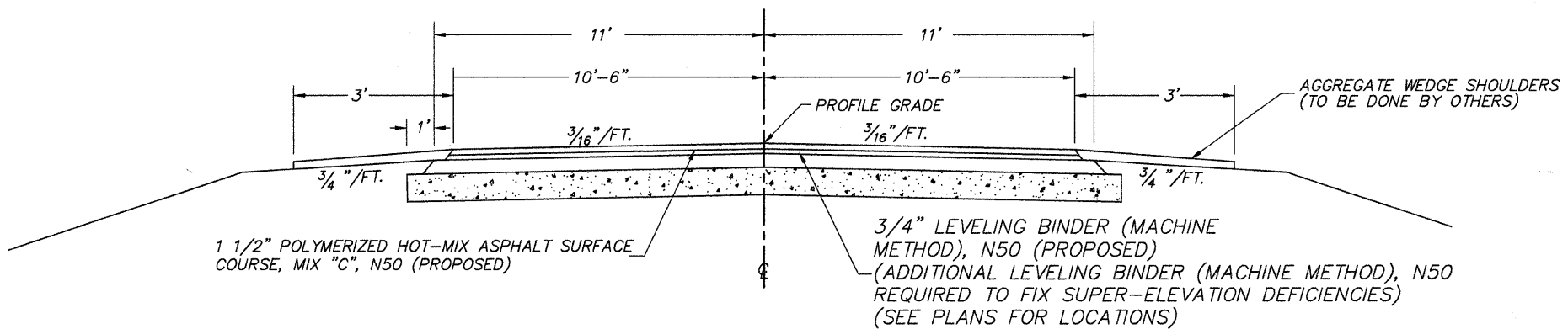


PROPOSED CROSS SECTION

STA. 105+60 TO STA. 120+00

HOT-MIX ASPHALT MIXTURE REQUIREMENTS

ITEM	ASPHALT GRADE	AGG. COMPOSITION	VOIDS
POLY. SURFACE	SBS PG 64-28	IL-9.5 or 12.5 MIX C	4.0% @ N50
SURFACE	PG 58-22	IL-9.5 or 12.5 MIX C	4.0% @ N50
LEVELING BINDER	PG 58-22	IL-9.5	4.0% @ N50

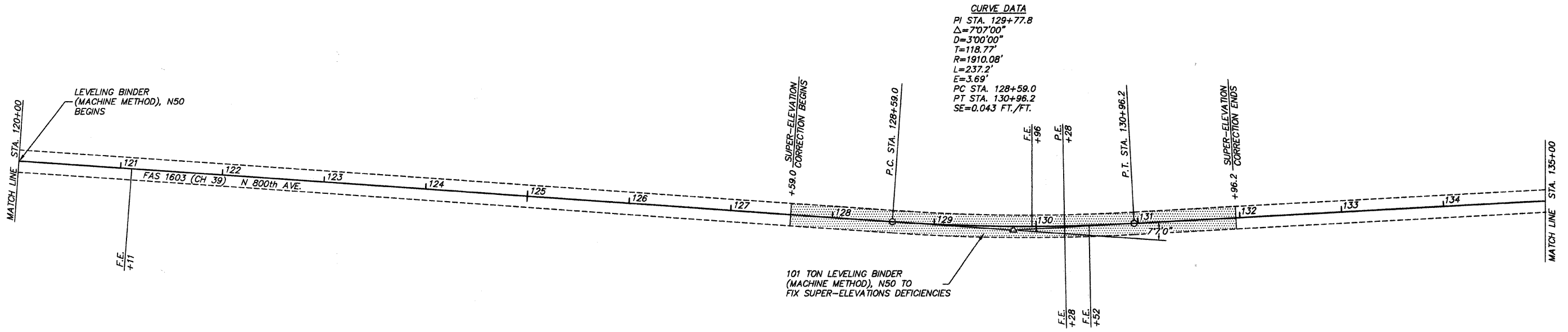
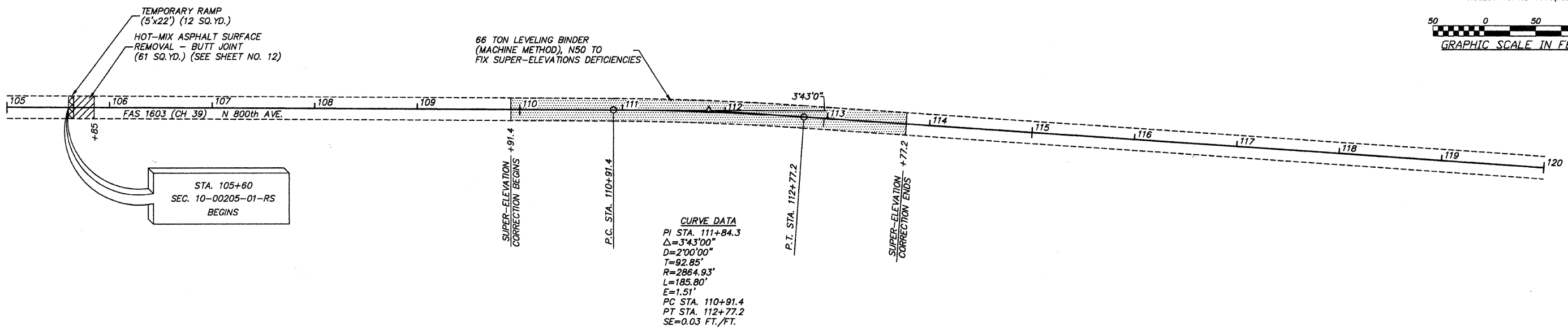
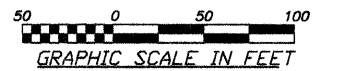


PROPOSED CROSS SECTION

STA. 120+00 TO STA. 334+36.50

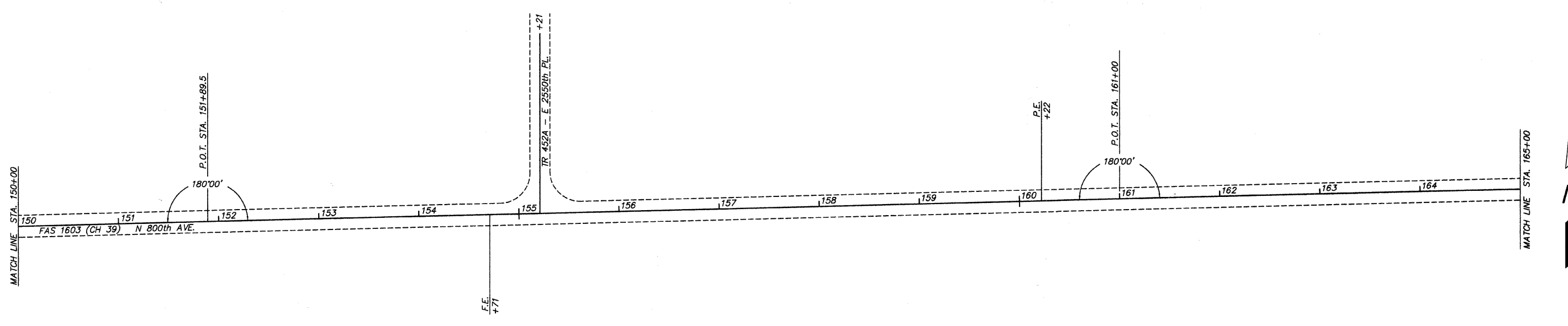
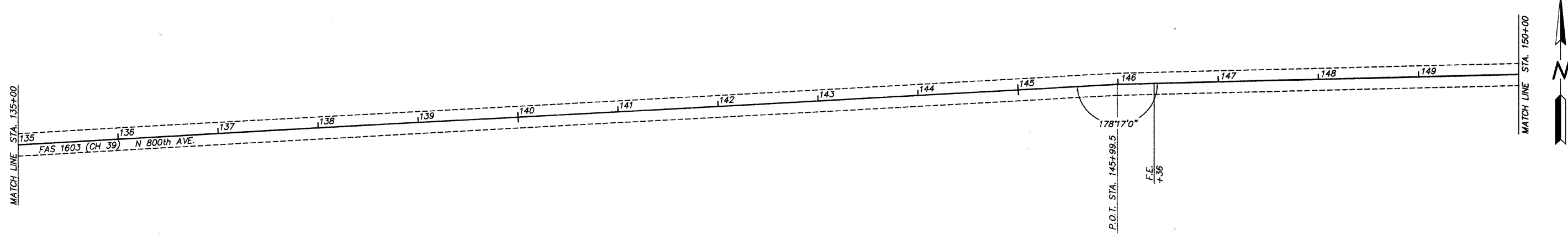
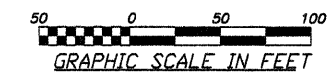
COUNTY	ROUTE	SECTION	TOTAL SHEETS	SHEET NO.
ADAMS	FAS 1603	10-00205-01-RS	12	4

STATION 105+00 TO STATION 135+00
PROJECT NO. RS-1603(102)



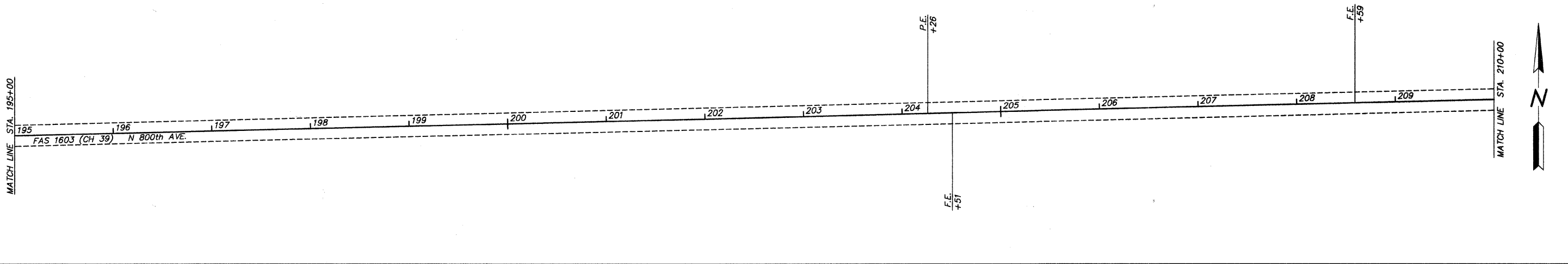
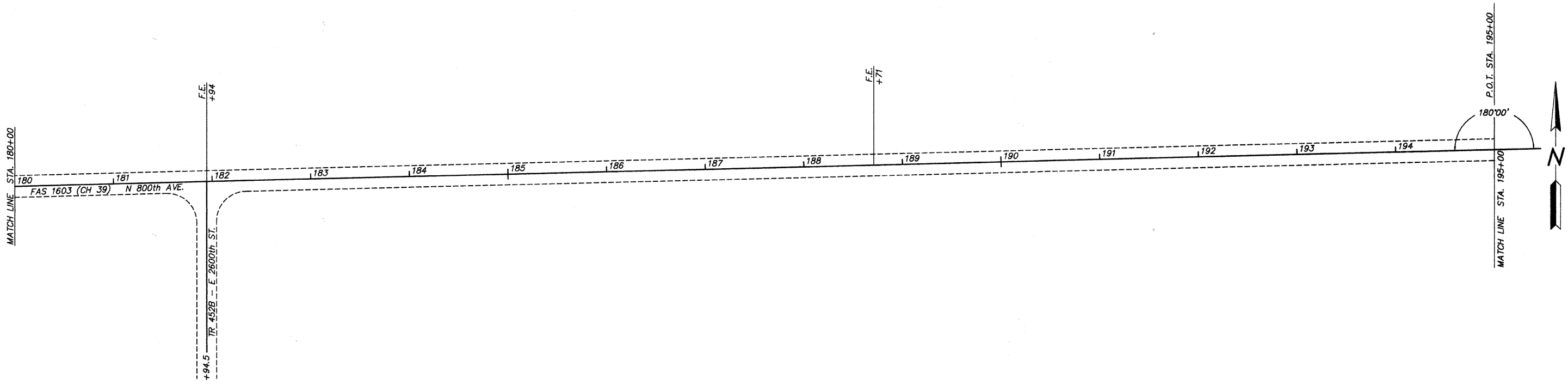
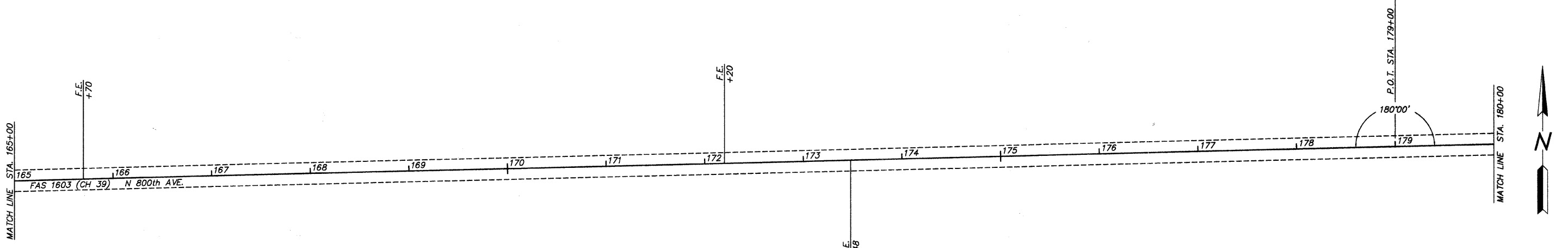
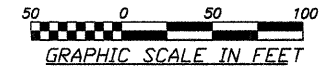
COUNTY	ROUTE	SECTION	TOTAL SHEETS	SHEET NO.
ADAMS	FAS 1603	10-00205-01-RS	12	5

STATION 135+00 TO STATION 165+00
PROJECT NO. RS-1603(102)



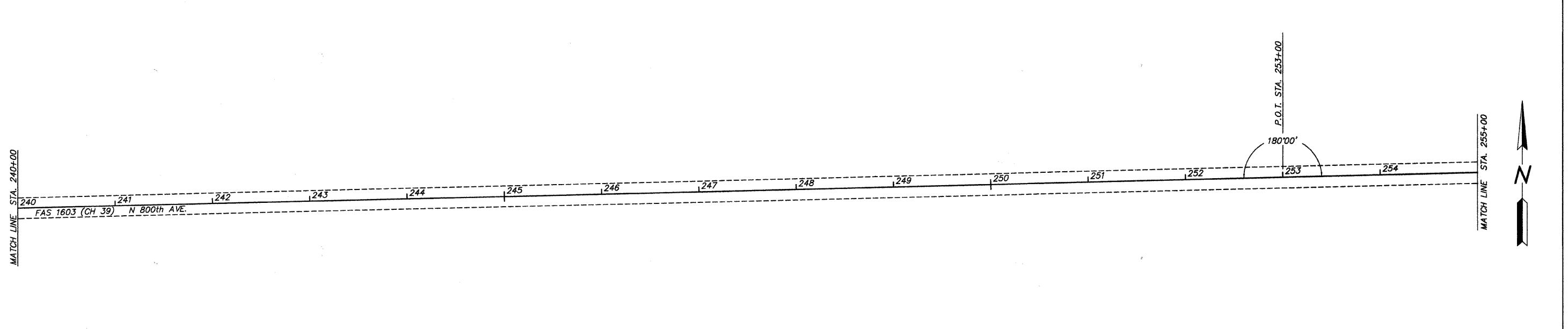
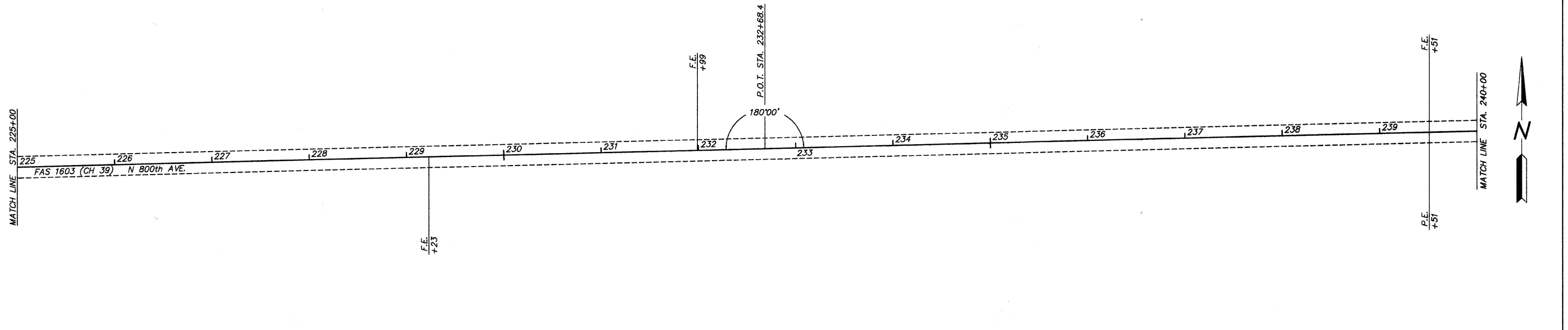
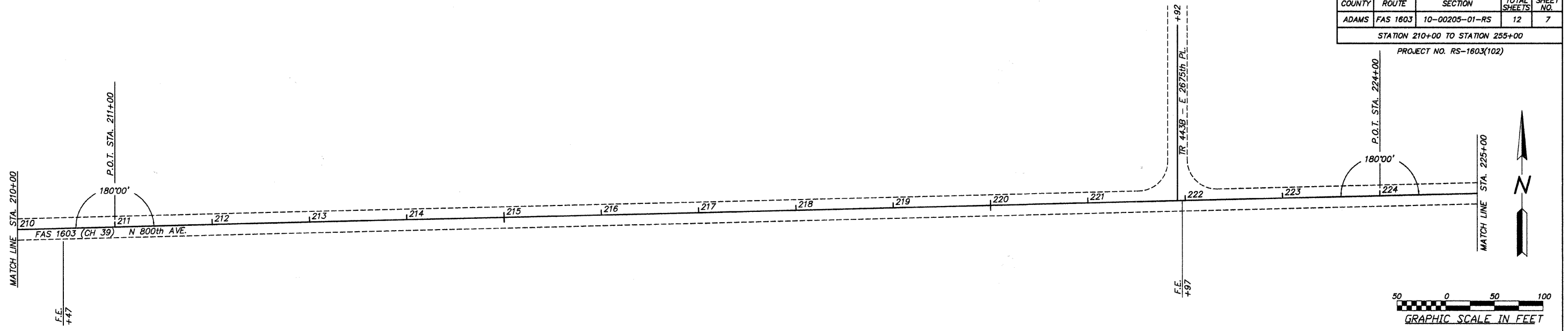
COUNTY	ROUTE	SECTION	TOTAL SHEETS	SHEET NO.
ADAMS	FAS 1603	10-00205-01-RS	12	6

STATION 165+00 TO STATION 210+00
PROJECT NO. RS-1603(102)



COUNTY	ROUTE	SECTION	TOTAL SHEETS	SHEET NO.
ADAMS	FAS 1603	10-00205-01-RS	12	7

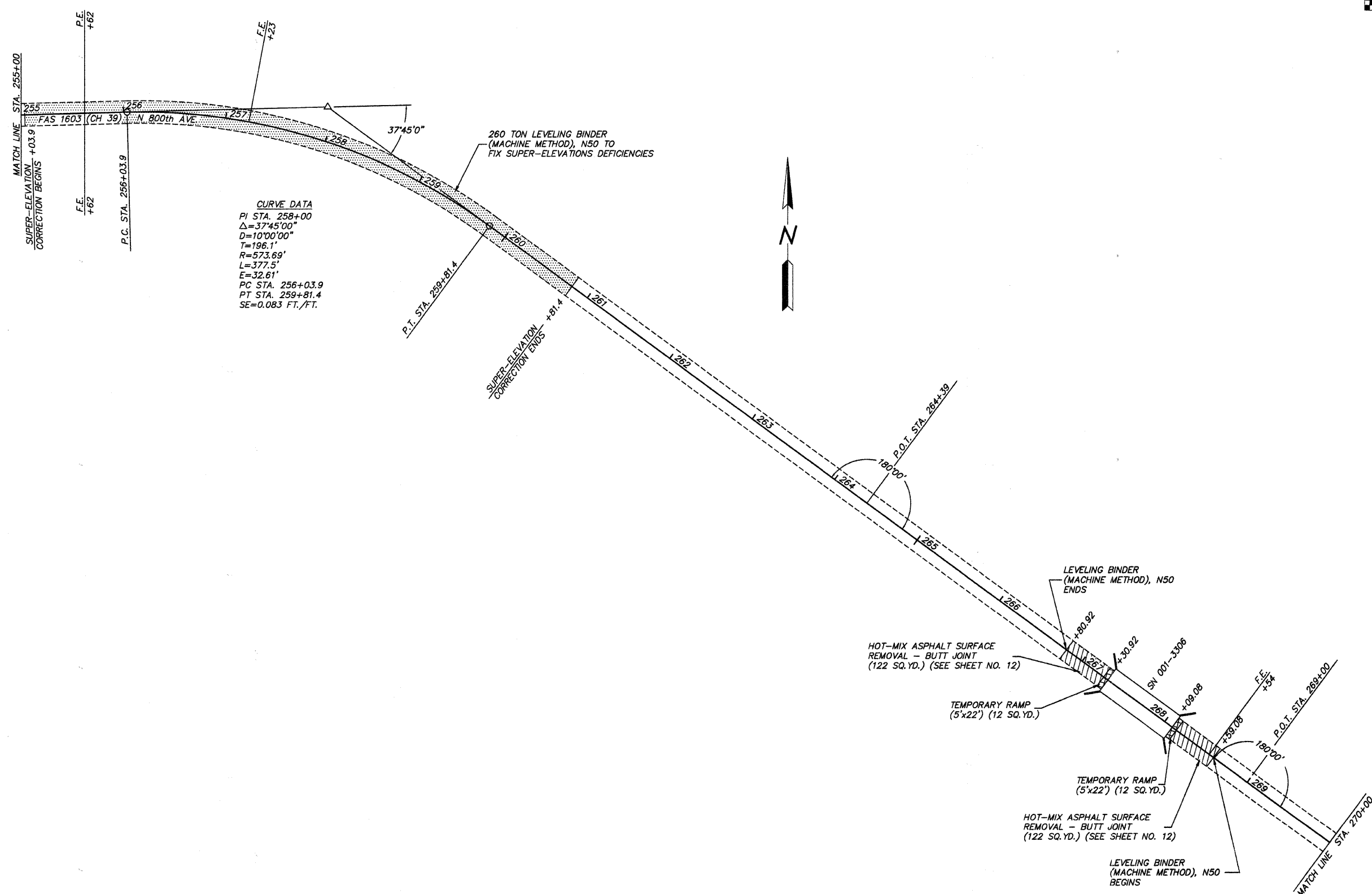
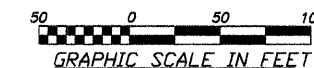
STATION 210+00 TO STATION 255+00
PROJECT NO. RS-1603(102)



COUNTY	ROUTE	SECTION	TOTAL SHEETS	SHEET NO.
ADAMS	FAS 1603	10-00205-01-RS	12	8

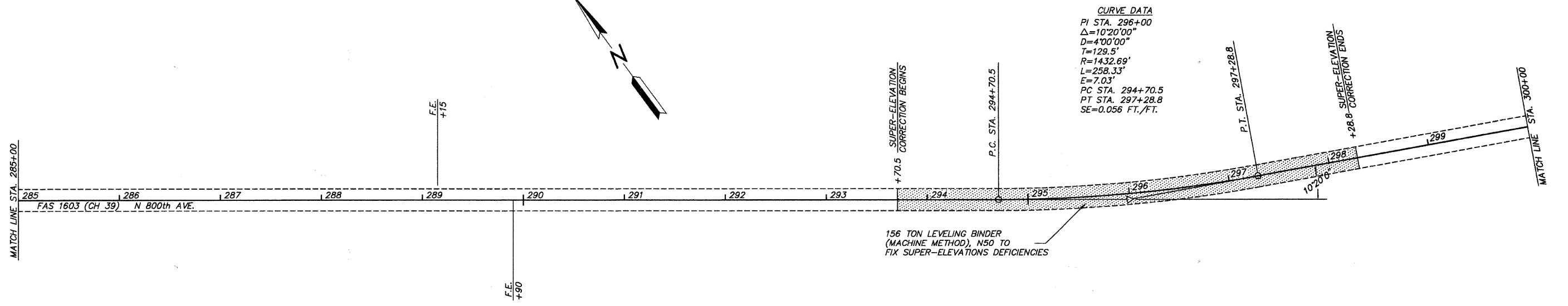
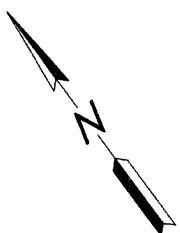
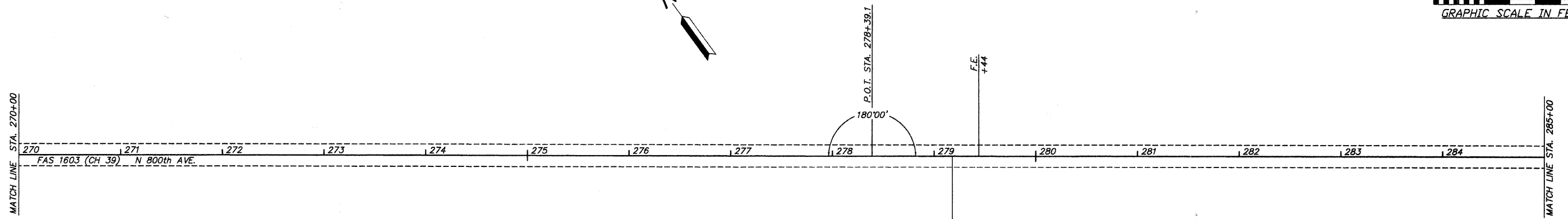
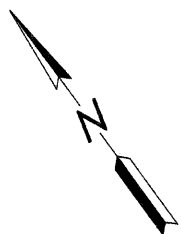
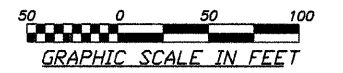
STATION 255+00 TO STATION 270+00

PROJECT NO. RS-1603(102)



COUNTY	ROUTE	SECTION	TOTAL SHEETS	SHEET NO.
ADAMS	FAS 1603	10-00205-01-RS	12	9

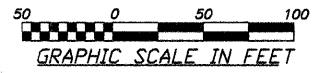
STATION 270+00 TO STATION 300+00
PROJECT NO. RS-1603(102)



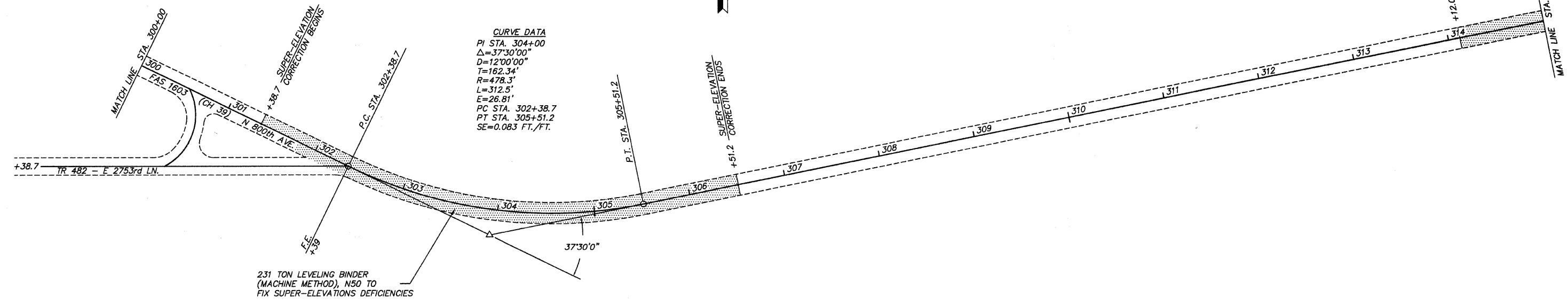
CURVE DATA
 PI STA. 296+00
 $\Delta=10^{\circ}20'00''$
 $D=4'00'00''$
 $T=129.5'$
 $R=1432.69'$
 $L=258.33'$
 $E=7.03'$
 PC STA. 294+70.5
 PT STA. 297+28.8
 $SE=0.056 \text{ FT./FT.}$

156 TON LEVELING BINDER
 (MACHINE METHOD), N50 TO
 FIX SUPER-ELEVATIONS DEFICIENCIES

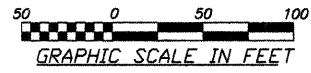
COUNTY	ROUTE	SECTION	TOTAL SHEETS	SHEET NO.
ADAMS	FAS 1603	10-00205-01-RS	12	10
STATION 300+00 TO STATION 315+00				
PROJECT NO. RS-1603(102)				



CURVE DATA
 PI STA. 304+00
 $\Delta=37^{\circ}30'00''$
 $D=12^{\circ}00'00''$
 $T=162.34'$
 $R=478.3'$
 $L=312.5'$
 $E=26.81'$
 PC STA. 302+38.7
 PT STA. 305+51.2
 $SE=0.083 \text{ FT./FT.}$



COUNTY	ROUTE	SECTION	TOTAL SHEETS	SHEET NO.
ADAMS	FAS 1603	10-00205-01-RS	12	11
STATION 315+00 TO STATION 334+36.50				
PROJECT NO. RS-1603(102)				



CURVE DATA
 PI STA. 316+50.0
 $\Delta=11^{\circ}00'00''$
 $D=4^{\circ}00'00''$
 $T=138.0'$
 $R=1432.69'$
 $L=275.0'$
 $E=6.63'$
 PC STA. 315+12.0
 PT STA. 317+87.0
 $SE=0.05$ FT./FT.

MATCH LINE STA. 315+00
 P.C. STA. 315+12.0

81 TON LEVELING BINDER
 (MACHINE METHOD), N50 TO
 FIX SUPER-ELEVATIONS DEFICIENCIES

SUPER-ELEVATIONS
 INDICATED BY
 HATCHING



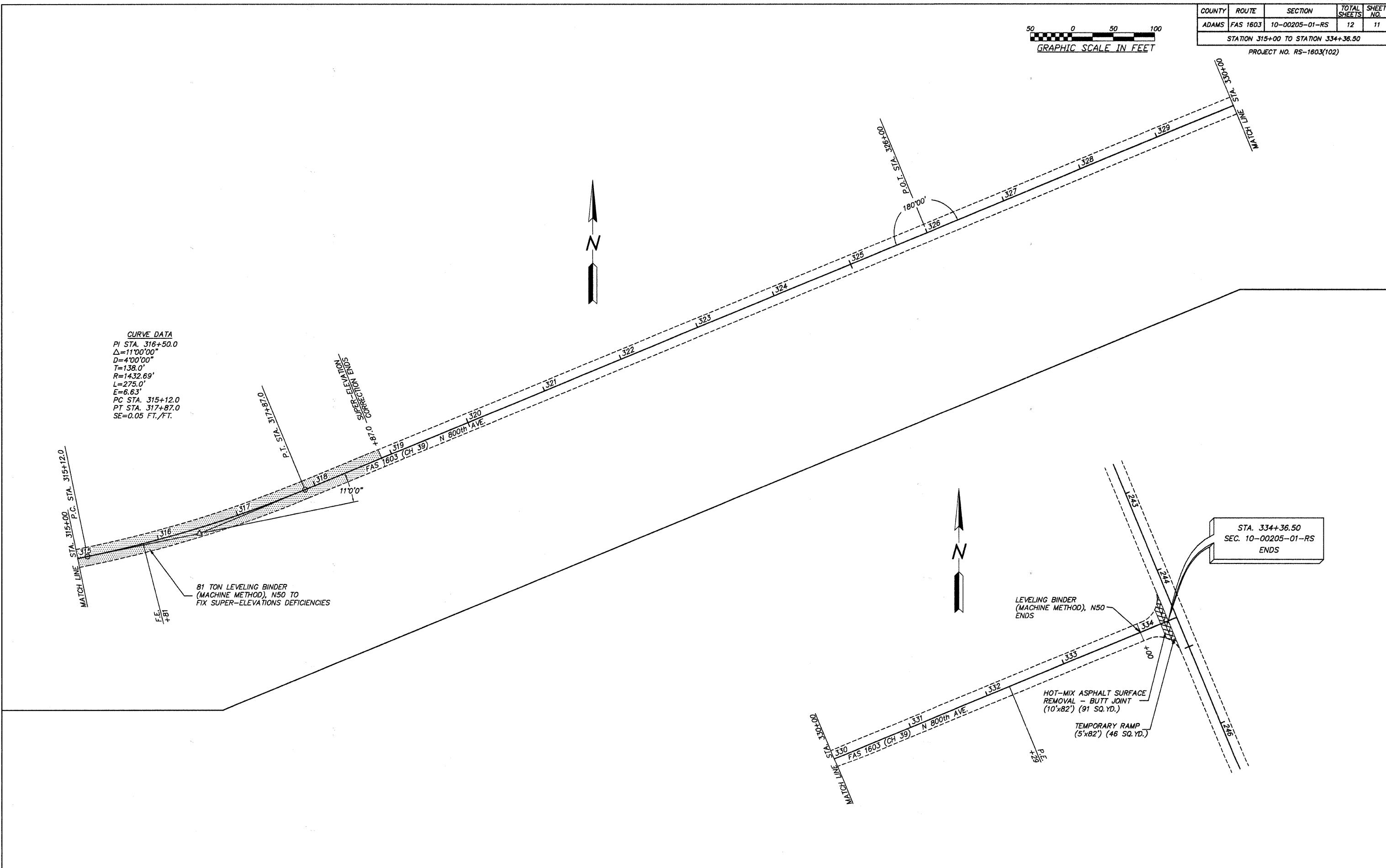
LEVELING BINDER
 (MACHINE METHOD), N50
 ENDS

HOT-MIX ASPHALT SURFACE
 REMOVAL - BUTT JOINT
 (10'x82') (91 SQ. YD.)

TEMPORARY RAMP
 (5'x82') (46 SQ. YD.)

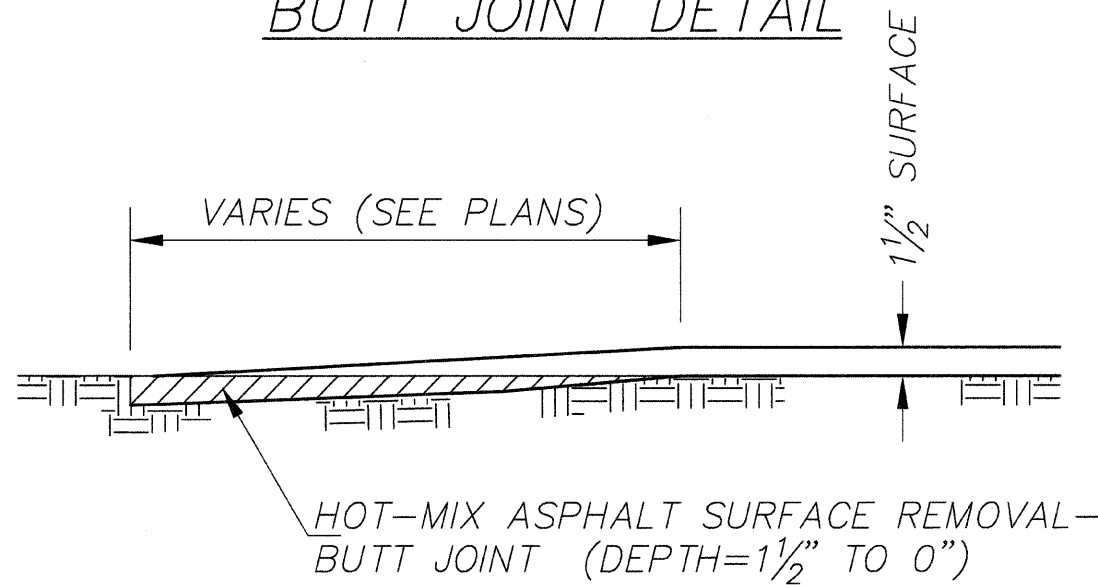
STA. 334+36.50
 SEC. 10-00205-01-RS
 ENDS

MATCH LINE STA. 334+36.50



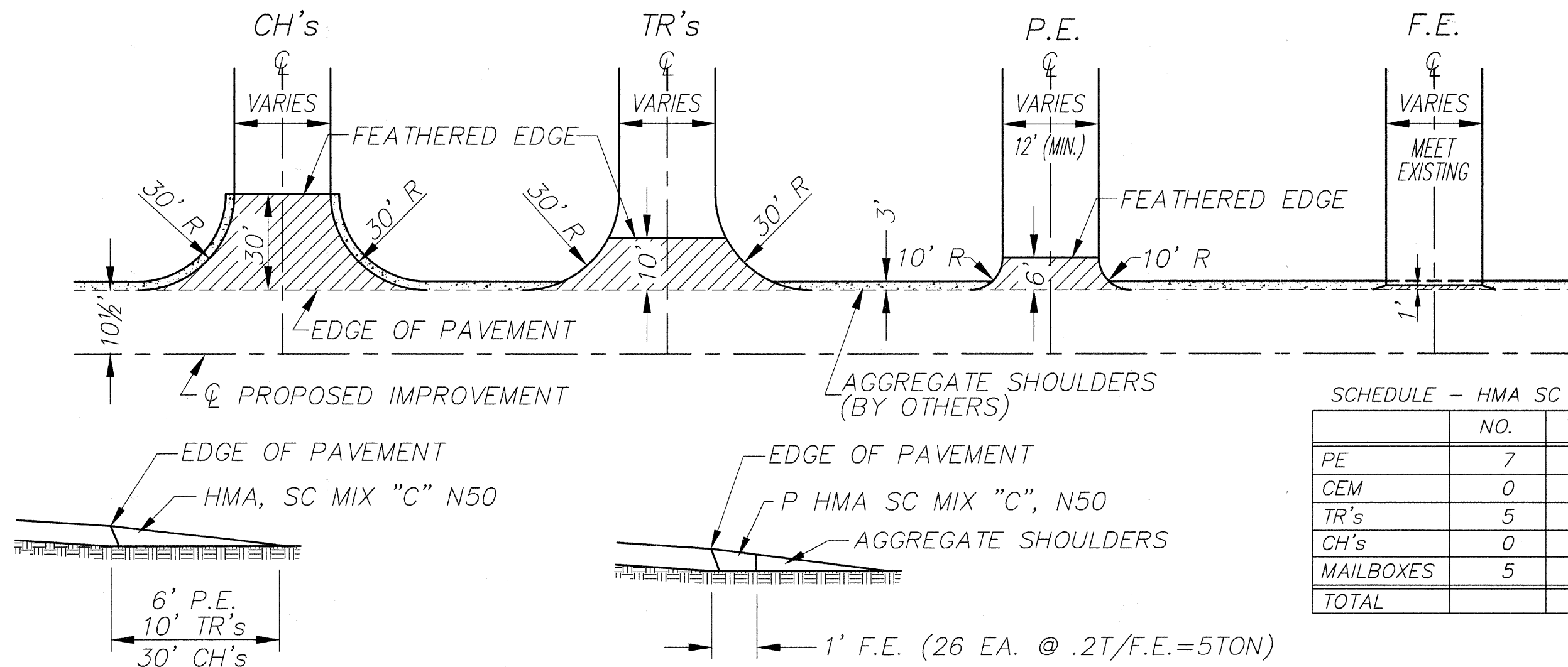
COUNTY	ROUTE	SECTION	TOTAL SHEETS	SHEET NO.
ADAMS	FAS 1603	10-00205-01-RS	12	12
BUTT JOINT DETAIL				
SIDE ROAD & ENTRANCE DETAILS				
PROJECT NO. RS-1603(102)				

BUTT JOINT DETAIL



INTERSECTION DETAILS

ENTRANCE DETAILS



SCHEDULE - HMA SC MIX "C" N50

	NO.	TONS/	TONS
PE	7	2	14
CEM	0	2	0
TR's	5	15	75
CH's	0	18	0
MAILBOXES	5	3	15
TOTAL			104