

ROUTE	SECTION	COUNTY	TOTAL SHEETS	SHEET NO.
F.A.S. 706	07-00106-02-FP	RICHLAND	9	1
CONTRACT NO. 95627			ILLINOIS	

STATE OF ILLINOIS
DEPARTMENT OF TRANSPORTATION
DIVISION OF HIGHWAYS
PLANS FOR PROPOSED
FEDERAL AID SECONDARY PROJECT
TRUCK ACCESS ROUTE PROGRAM

RICHLAND COUNTY SECTION 07-00106-02-FP
F.A.S. 706 COUNTY HIGHWAY 9
JOB NO. C-97-072-10
PROJECT NO. RS-0706(135)

R 9 E

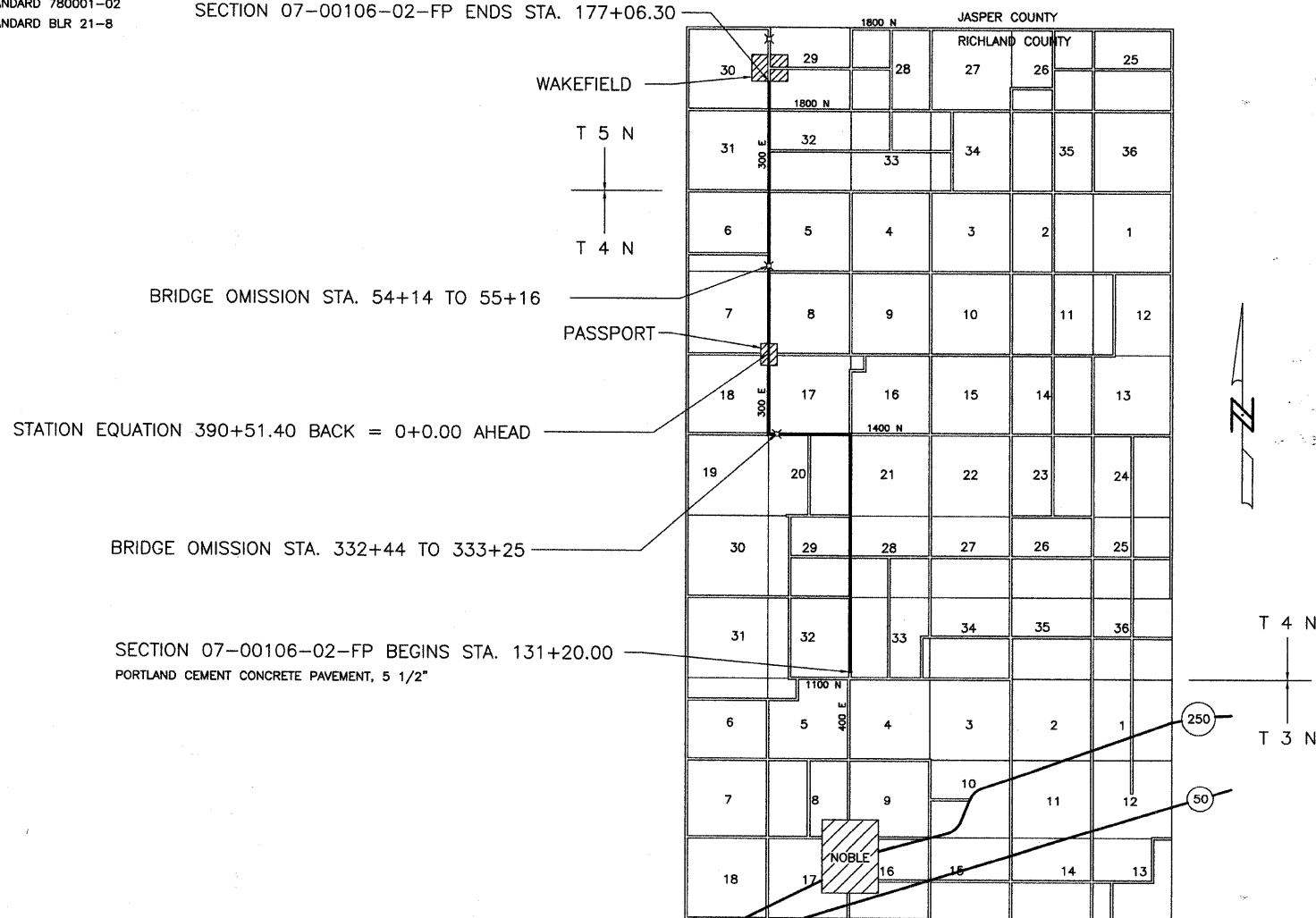
INDEX OF SHEETS

SHEET	ITEM
1	COVER SHEET
2	SUMMARY OF QUANTITIES / TYPICAL SECTIONS
3	SURFACE REMOVAL / PCC PAVEMENT DETAILS
4-5	INTERSECTION DETAILS
6	ENTRANCE DETAILS
7	SIDE ROAD APPROACH DETAILS
8-9	TRAFFIC CONTROL PLAN

STANDARD DRAWINGS

- STANDARD 000001-05
- STANDARD 542301-02
- STANDARD 542306-02
- STANDARD 542311-01
- STANDARD 542601-02
- STANDARD 542606-01
- STANDARD 701901-01
- STANDARD 780001-02
- STANDARD BLR 21-8

SECTION 07-00106-02-FP ENDS STA. 177+06.30



SECTION 07-00106-02-FP BEGINS STA. 131+20.00
PORTLAND CEMENT CONCRETE PAVEMENT, 5 1/2"

CONTRACT NO. 95627

RURAL MAJOR COLLECTOR
ADT = 550
DESIGN SPEED = 50 MPH

Joint Utility Locating Information for Excavators
JULIE 1-800-892-0123

GROSS LENGTH SECTION 07-00106-02-FP = 43,637.7 Ft. = 8.265 Mi.
OMISSION LENGTH SECTION 07-00106-02-FP = 183.0 Ft. = 0.035 Mi.
NET LENGTH SECTION 07-00106-02-FP = 43,454.7 Ft. = 8.230 Mi.

RICHLAND COUNTY HIGHWAY DEPARTMENT
4334 N. MERIDIAN ROAD
OLNEY, ILLINOIS 62450



Michael R. Bridges
4-12-10
Lic. Exp. 11-30-11

CHARLESTON ENGINEERING INC.
105 N. KITCHELL
P.O. BOX 397
OLNEY, ILLINOIS 62450
PH. 618-392-0736

APPROVED April 13 2010
Jenny A. Colewell, P.E.
COUNTY ENGINEER

STATE OF ILLINOIS
DEPARTMENT OF TRANSPORTATION

PASSED April 16 2010
Maureen E. Costello
DISTRICT SEVEN ENGINEER OF
LOCAL ROADS AND STREETS

Releasing For
Bid Based on
Limited Review

April 16 2010
Roger L. Danabell
DEPUTY DIRECTOR OF HIGHWAYS
REGION FOUR ENGINEER