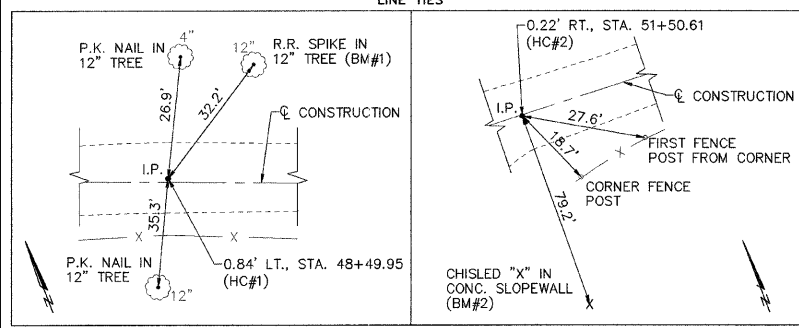


ROUTE NO.	SECTION	COUNTY	TOTAL SHEETS	SHEET NO.
F.R. 1114	09-18120-00-BR	FAYETTE	14	3
FED. AID PROJECT	ILLINOIS	PROJECT BROS-051(089)	CONTRACT NO. 95630	



STA. 50+00 (EXISTING S.N. 026-0026)
SECTION 09-18120-00-BR, EXISTING BRIDGE, THREE SPAN CONCRETE DECK BEAMS SUPPORTED BY CONCRETE ABUTMENTS AND PIERS WITH CONCRETE CAPS WITH TIMBER PILES, TO BE REMOVED.

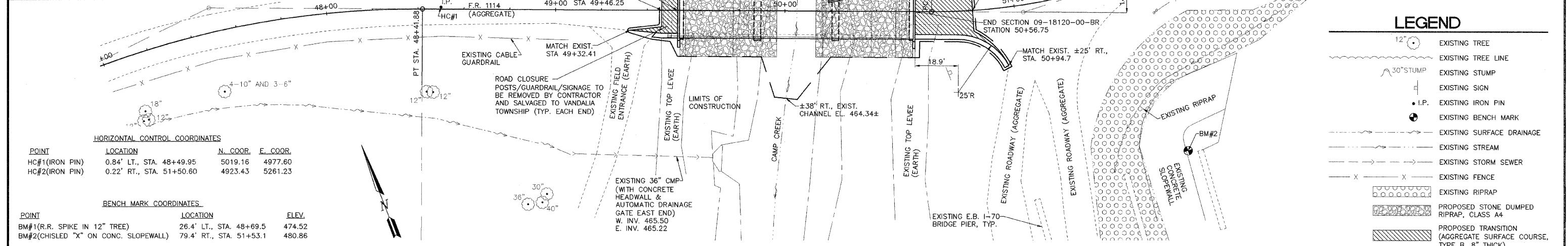
STA. 50+05, CONSTRUCT (PROPOSED S.N. 026-3447)
THREE SPAN PRECAST PRESTRESSED CONCRETE DECK BEAM BRIDGE (103.50' BK. TO BK. ABUTMENTS) WITH SPILL THRU ABUTMENTS AND PILE BENT PIERS, WITH STEEL HP PILES. 0° SKEW, 24' ROADWAY.

PI STA. 51+03.90
N 4926.20
E 5213.93
I = 18'11"15"L
CIRCULAR
D = 18'11"15"
D_a = 22'55"06"
D_c = 23'04"26"
CB = S 77°48'43" E
T = 40.02
R = 250.00
L = 79.36
C = 79.03
E = 3.18
M = 3.14

CONSTRUCT SEEDING CLASS 2 (SPECIAL)
STA. 49+32.24 TO STA. 51+00 = 0.02 ACRE

DESIGN HWE(50yr) = EL. 477.62
OVER THE ROAD FLOW HWE(50yr) = N/A BETWEEN LEVEES.
657 S.F. EXIST. BRIDGE OPENING BELOW HWE(50yr) EL. 477.62
747 S.F. EXIST. BRIDGE OPENING BELOW LOW BEAM EL. 478.67±
547 S.F. EXIST. WEST BOUND I-70 BRIDGE OPENING BELOW HWE(50yr) EL. 477.62
664 S.F. EXIST. WEST BOUND I-70 BRIDGE OPENING BELOW NEW LOW BEAM EL. 479.09
501 S.F. EXIST. CHANNEL OPENING OF LEVEE 60' UPSTREAM AT TOP OF LEVEE EL. 476.85
667 S.F. PROPOSED BRIDGE OPENING BELOW HWE(50yr) EL. 477.62
802 S.F. PROPOSED BRIDGE OPENING BELOW NEW LOW BEAM EL. 479.09

DESIGN HWE(50yr), EL. 477.62 HAS BEEN TAKEN FROM E.B. I-70 STRUCTURE (026-0019) CONSTRUCTED IN 1998, IMMEDIATELY DOWN STREAM OF OUR STRUCTURE AND IS USED ONLY FOR REFERENCE AND COMPARISON WITH UPSTREAM CHANNEL AND DOWNSTREAM OPENING AREAS.



LEGEND

- 12" EXISTING TREE
- EXISTING TREE LINE
- 30" STUMP EXISTING STUMP
- EXISTING SIGN
- I.P. EXISTING IRON PIN
- EXISTING BENCH MARK
- EXISTING SURFACE DRAINAGE
- EXISTING STREAM
- EXISTING STORM SEWER
- EXISTING FENCE
- EXISTING RIPRAP
- PROPOSED STONE DUMPED RIPRAP, CLASS A4
- PROPOSED TRANSITION (AGGREGATE SURFACE COURSE, TYPE B, 8" THICK)

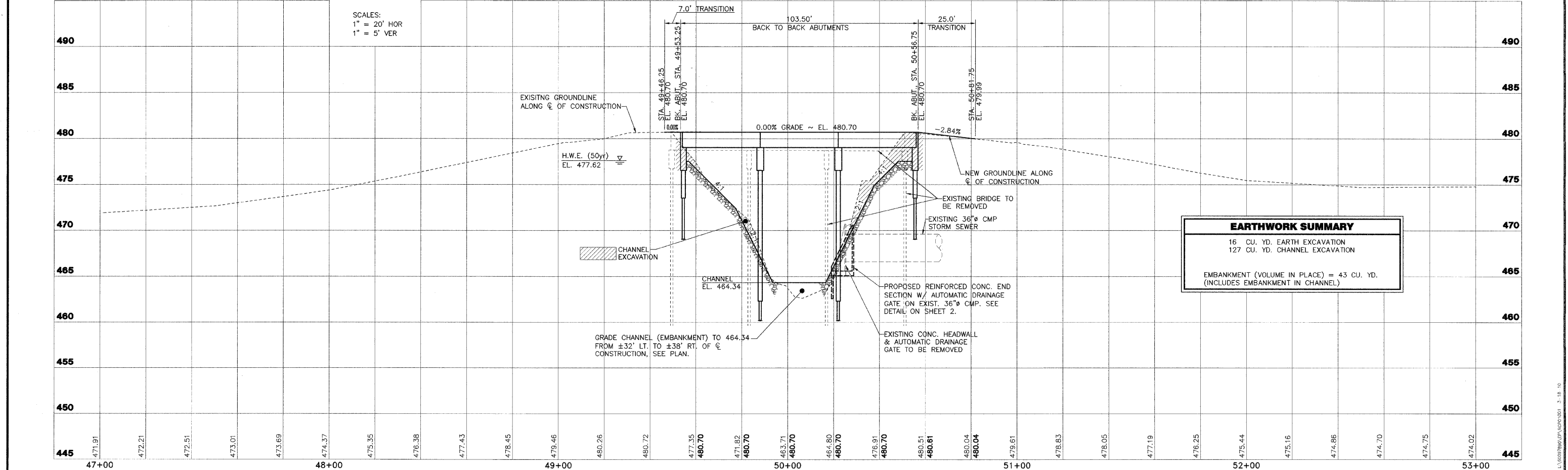
HORIZONTAL CONTROL COORDINATES

POINT	LOCATION	N. COOR.	E. COOR.
HC#1 (IRON PIN)	0.84' LT., STA. 48+49.95	5019.16	4977.60
HC#2 (IRON PIN)	0.22' RT., STA. 51+50.60	4923.43	5261.23

BENCH MARK COORDINATES

POINT	LOCATION	ELEV.
BM#1 (R.R. SPIKE IN 12" TREE)	26.4' LT., STA. 48+69.5	474.52
BM#2 (CHISLED "X" ON CONC. SLOPEWALL)	79.4' RT., STA. 51+53.1	480.86

SCALES:
1" = 20' HOR
1" = 5' VER



EARTHWORK SUMMARY

16 CU. YD. EARTH EXCAVATION
127 CU. YD. CHANNEL EXCAVATION
EMBAKMENT (VOLUME IN PLACE) = 43 CU. YD. (INCLUDES EMBAKMENT IN CHANNEL)

AECOM
Copyright © 2010 by AECOM
IL Design Firm Reg. No.
AECOM USA, Inc.
184-003706
AECOM Technical Services
184-000178

F.R. 1114, SECTION 09-18120-00-BR
VANDALIA ROAD DISTRICT
FAYETTE COUNTY, ILLINOIS

PLAN AND PROFILE

STA. 47+00 TO STA. 53+00

SURVEY	JAS	CHECKED	DATE
DESIGN	MRQ	APPROVED	03/18/10
DRAWN	JMW, BLT		JOB NO.
			60097890