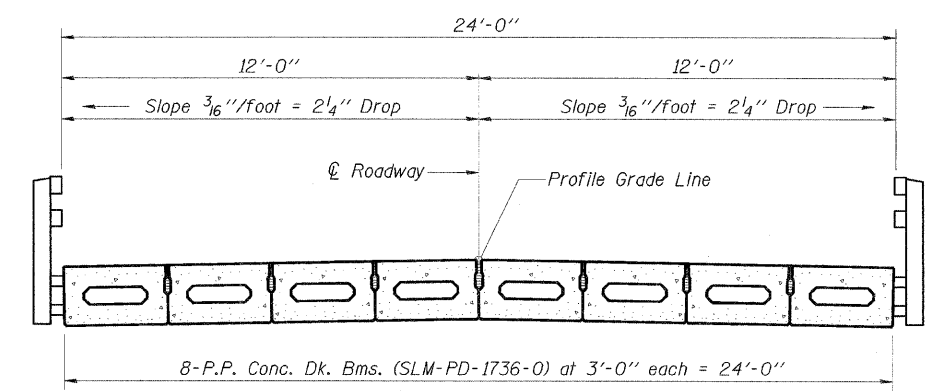
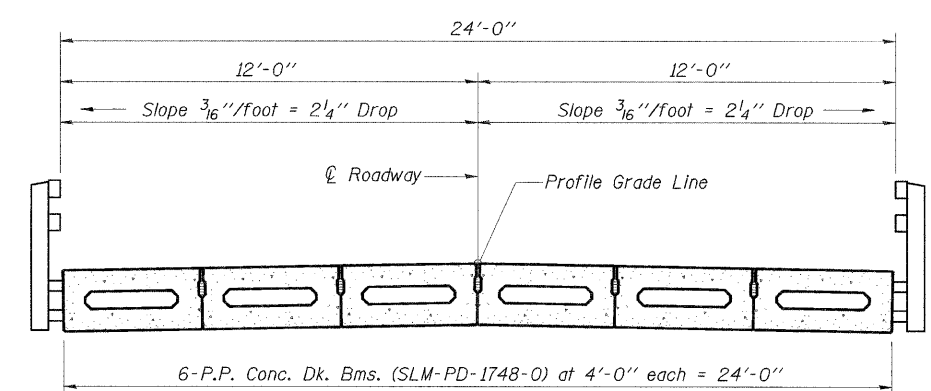


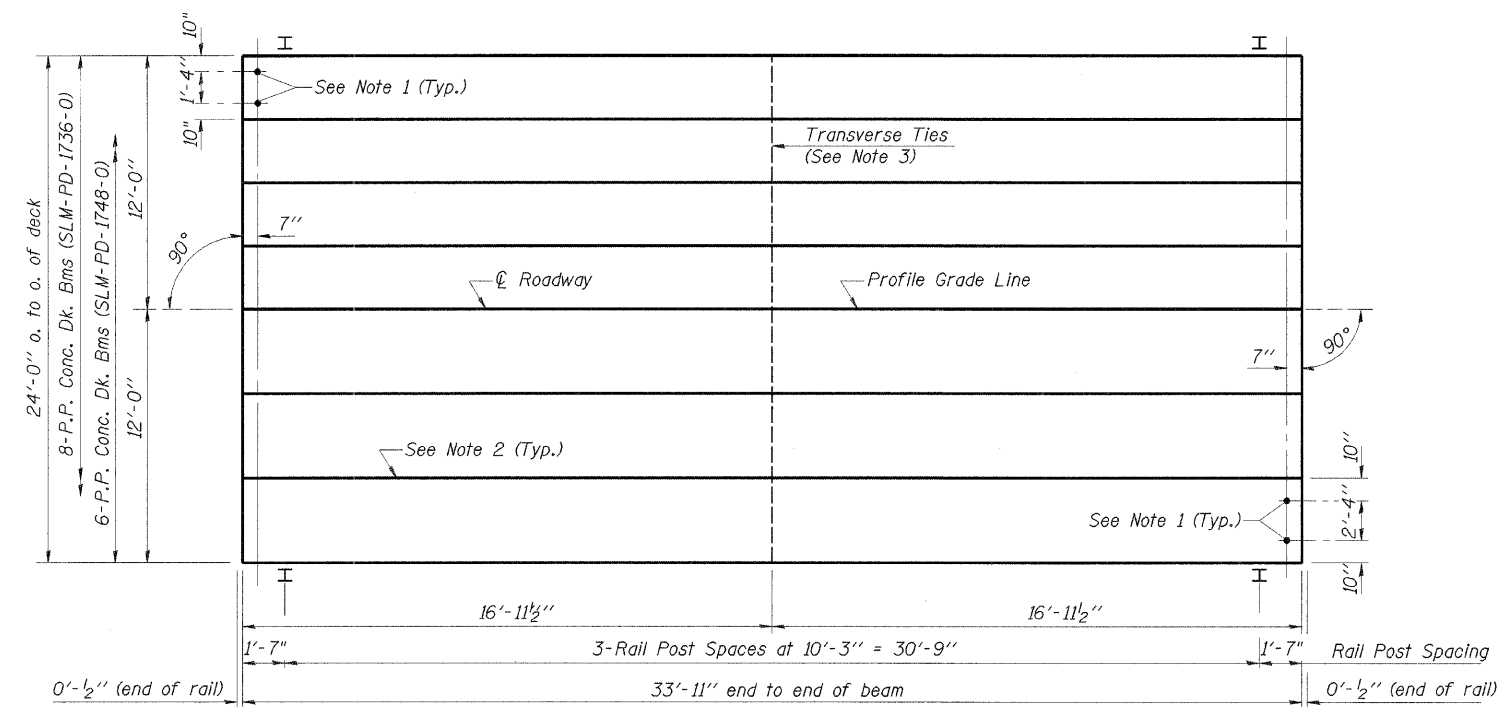
TYPICAL ELEVATIONS



CROSS SECTION



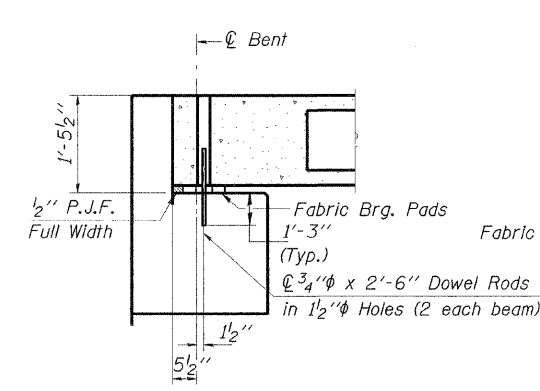
CROSS SECTION



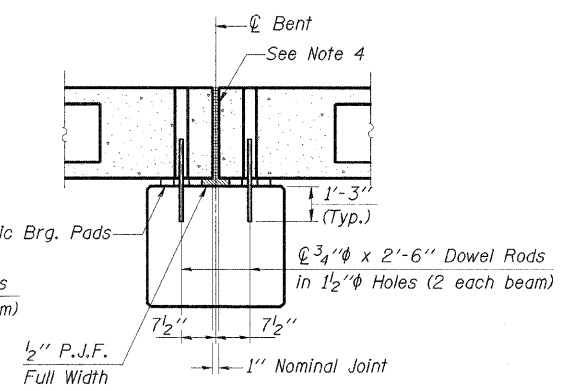
PLAN

NOTES

1. After beams have been erected, holes shall be drilled into substructure and anchor dowels placed. Dowel holes shall be filled with non-shrink grout to top of beam and allowed to cure min. 24 hrs. prior to grouting the shear keys.
2. Longitudinal keys shall be grouted.
3. The 1" ϕ rods in the transverse tie assembly shall be tightened to a snug fit and the threads set. Pockets that receive transverse tie bar outside shall be filled with grout after transverse tie assembly is in place.
4. Nominal 1" joint at \varnothing Pier shall be filled with non-shrink grout.



SECTION AT ABUTS.
(Along \varnothing Beams)



SECTION AT PIERS
(Along \varnothing Beams)

QUANTITIES FOR ONE SPAN

P.P. Conc. Dk. Bm. 17" Dp.	816 Sq. Ft.
Steel Railing	68 Ft.

<p>2524 S. Broadway Salem, Illinois 62861 618.548.3500 IL Design Firm Reg. No. 184-000175 No. 184-003708 www.aecom.com</p>	<p>SLM-CS-2417-34</p> <p>P.P.C. DECK BEAM SUPERSTRUCTURE</p>
	<p>24' ROADWAY</p> <p>17" BEAMS</p> <p>34' SPAN - 0° SKEW</p>
<p>Date: 03/18/10</p> <p>Design: WDL</p> <p>Drawn: JSD</p> <p>Job No.: 60097890</p>	