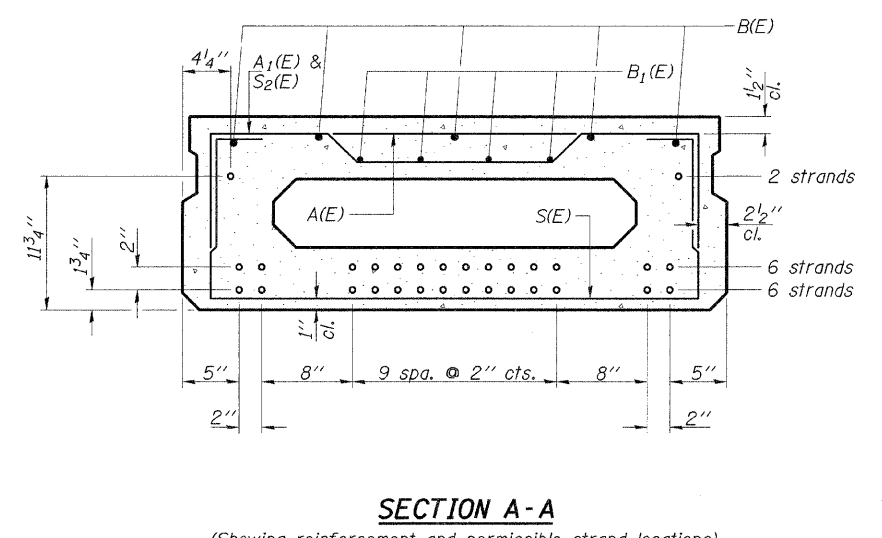


Note: Spacing of S(E) and S<sub>2</sub>(E) bars may be adjusted up to 4" in the immediate area of the transverse tie diaphragms to miss the block outs for the transverse ties.



Note: Place the number of strands specified in each row symmetrically about the centerline of beam in the permissible strand locations shown.  
Strands: 14 - 1/2" φ strands.

**BAR LIST**  
**ONE BEAM ONLY**  
(For information only)

Bar	No.	Size	Length	Shape
A(E)	10	#4	3'-7"	—
A <sub>1</sub> (E)	20	#4	3'-10"	—
B(E)	5	#5	33'-7"	—
B <sub>1</sub> (E)	4	#4	33'-7"	—
S(E)	48	#4	6'-9"	□
S <sub>1</sub> (E)	10	#4	5'-3"	□
S <sub>2</sub> (E)	38	#4	5'-6"	□
UK(E)	12	#5	3'-8"	□
U <sub>1</sub> (E)	2	#4	6'-0"	□

Note: See sheet SLM-PD-1748-0D for additional details.  
See sheet SLM-CS-2417-34 for Bill of Material.

	2524 S. Broadway Salem, Illinois 62881 618.548.3500 IL Design Firm Reg. No. 184-000178 No. 184-003706 www.aecom.com	<b>SLM-PD-1748-0</b> <b>P.P.C. DECK BEAM</b> <b>DETAILS AND SECTIONS</b>
	Date: 03/18/10 Design: WDL Drawn: JSD Job No.: 60097890	<b>24' ROADWAY</b> <b>17" x 48" BEAMS</b> <b>0° SKEW</b>