

Note: Connect beams in pairs with the transverse tie configuration shown.

**NOTES**

Prestressing steel shall be uncoated high strength, low relaxation 7-wire strand, Grade 270. The nominal diameter shall be 1/2" and the nominal cross-sectional area shall be 0.153 sq. in. The 1" φ rods in the transverse tie assembly shall be tightened to a snug fit and the threads set. Pockets on exterior faces of bridge shall be filled with grout after transverse tie assembly is in place.

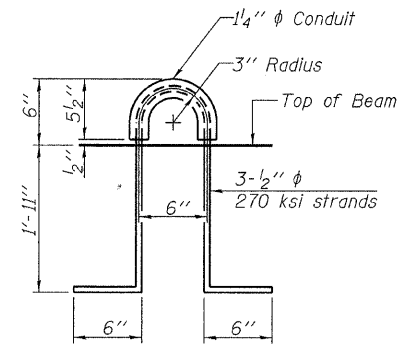
Reinforcement bars shall conform to ASTM A 706, Grade 60. (See Special Provisions). Two 1/8" fabric adjusting shims of the dimensions of the exterior bearing pad shall be provided for each bearing pad location.

A minimum 2 1/2" φ lifting pin shall be used to engage the lifting loops during handling. Corrosion Inhibitor, per Article 1020.05(b)(12) and 1021.06 of the Standard Specifications, shall be used in the concrete for precast prestressed concrete deck beams.

Compressive strength of prestressed concrete, f'c, shall be 6000 psi.

Compressive strength of prestressed concrete at release, f'ci, shall be 5000 psi.

Note: The loop shall be formed in a manner such that all strands are engaged during lifting. Burning of the lifting loops shall not be permitted. Lifting loops shall be ground off level with the surface of the deck beams and protected with a two-compound epoxy in accordance with Article 1025.01 of the Standard Specifications.



**BILL OF MATERIAL**

Precast Prestressed Conc. Deck Bms. (27" depth)	Sq. Ft.	1,680
---	---------	-------

**SUPERSTRUCTURE DETAILS**  
**27" X 48" PPC DECK BEAM DETAILS**  
**STRUCTURE NO. 087-3570**

DESIGNED - A.S.L.
CHECKED - S.W.M.
DRAWN - D.T.M.
CHECKED - S.W.M.
PD-2748-LD

11-1-09

**HAMPTON, LENZINI AND RENWICK, INC.**  
CIVIL ENGINEERS - STRUCTURAL ENGINEERS - LAND SURVEYORS  
3085 STEVENSON DRIVE, SUITE 201  
SPRINGFIELD, ILLINOIS 62703  
217.546.3400 www.hlrengineering.com

184.000950  
ILLINOIS PROFESSIONAL DESIGN FIRM LS / PE / SE CORPORATION  
PROJECT NUMBER: 09.0135.130 DATE: 02/08/10

SHEET NO. 3	T.R.	SECTION	COUNTY	TOTAL SHEETS	SHEET NO.
9 SHEETS	231	09-23113-00-BR	SHELBY	20	14
TOWER HILL ROAD DISTRICT			CONTRACT NO. 95631		
FED. ROAD DIST. NO.		ILLINOIS FED. AID PROJECT BROS-173(171)			