

ROUTE	COUNTY	SECTION	SHEET/OF
VARIOUS	RANDOLPH	08-00077-00-SP	1/5
CONTRACT NO. 97439			

FEDERAL AID PROJECT

SUMMARY OF SHEETS

SHEET NO	CONTENT
1	COVER SHEET
2	LOCATION MAP, SUMMARY OF QUANTITIES, GENERAL NOTES
3-5	RAISED PAVEMENT MARKER AND SIGN SCHEDULES

STATE OF ILLINOIS
DEPARTMENT OF TRANSPORTATION
PLANS FOR
PROPOSED LOCAL AGENCY IMPROVEMENT
RANDOLPH COUNTY

FAS ROUTE 849
FAS ROUTE 853
FAS ROUTE 859
FAS ROUTE 862
FAS ROUTE 1870

SECTION NO. 08-00077-00-SP
JOB NO. C-98-307-09
CONTRACT NO. 97439
PROJECT NO. RSIP-0157(042)

HIGHWAY STANDARDS

701001-02 701006-03 701011-02 701301-03
701306-02 701311-03 701901-01 720001-01
720006-02 728001-01 781001-03

UTILITIES

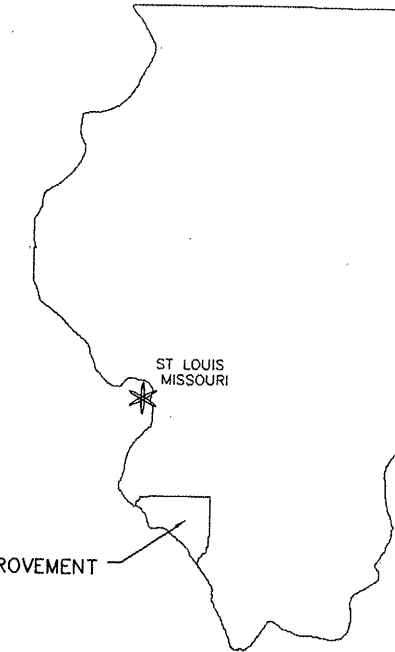
EGYPTIAN ELECTRIC COOP PH. 618-965-3437
EGYPTIAN TELEPHONE COOP PH. 618-965-3481

AMEREN IP PH. 618-236-6210
EGYPTIAN WATER PH. 618-965-3434

HARRISONVILLE TELEPHONE PH. 618-939-6112
VERIZON SERVICE 1-800-483-5000

NEW WAVE COMMUNICATIONS
PH. 888-863-9928

J.U.L.I.E. 1-800-892-0123



SITE OF PROPOSED IMPROVEMENT

SEE SHEET NO. 2
FOR LOCATION MAP

THESE PLANS WERE PREPARED BY ME OR A MEMBER OF MY STAFF WORKING UNDER MY PERSONAL SUPERVISION.
Michael Riebeling 4/06/2010
COUNTY ENGINEER DATE



11/30/2011
Expiration Date

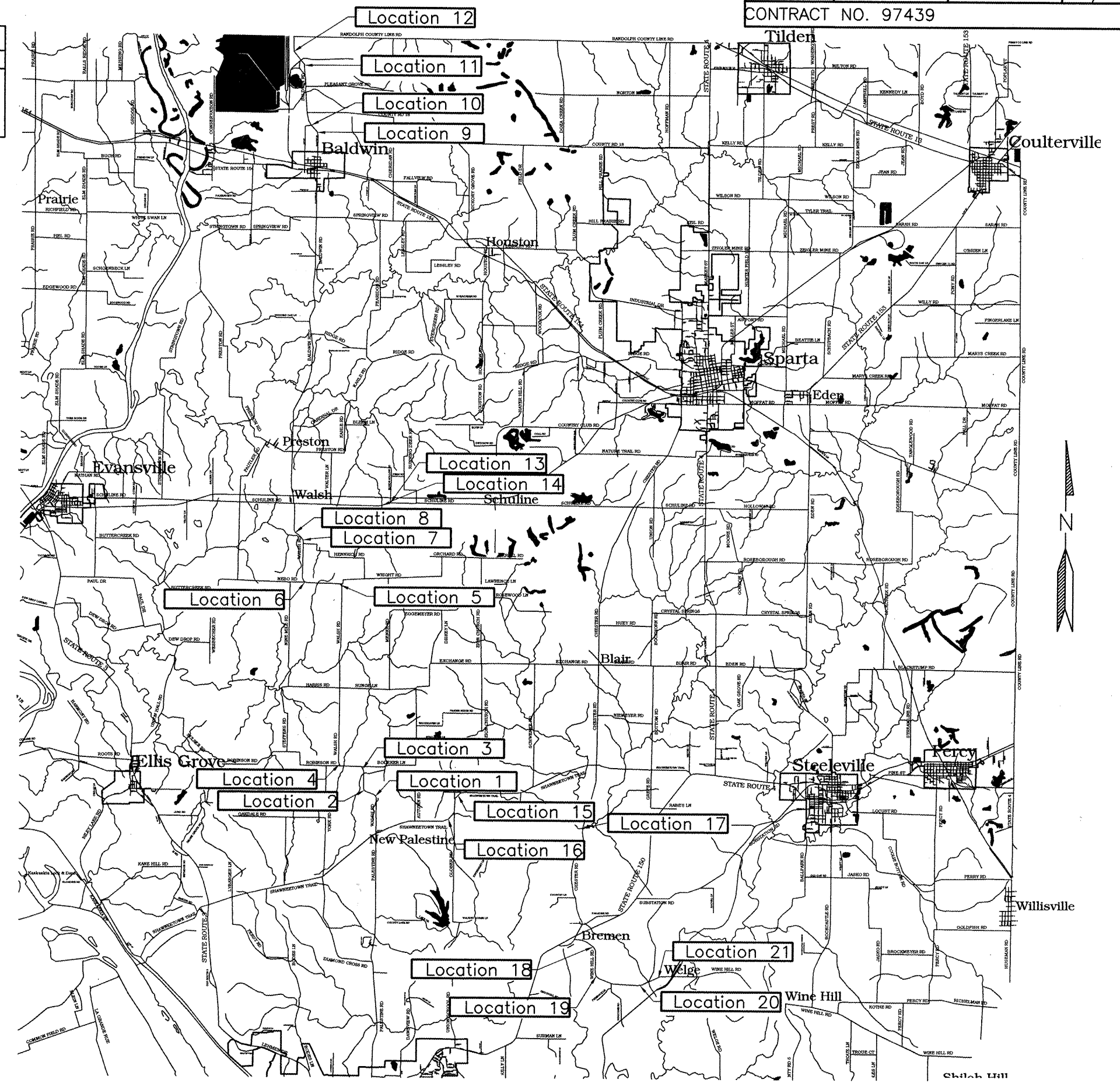
ILLINOIS DEPARTMENT OF TRANSPORTATION	
Approved	April 6 2010 <i>Michael Riebeling</i> Randolph County, County Engineer
Passed	April 21 2010 <i>[Signature]</i> District 8 Engineer of Local Roads & Streets
Releasing for Bid Based on Limited Review	April 21 2010 <i>Mary C. Lamicat</i> Deputy Director of Highways, Region 5 Engineer

ROUTE	COUNTY	SECTION	SHEET/OF
VARIOUS	RANDOLPH	08-00077-00-SP	2/5
CONTRACT NO. 97439			

SUMMARY OF QUANTITIES			
PAY ITEM	ITEM	UNIT	QUANTITY
67100100	MOBILIZATION	L SUM	1
72000100	SIGN PANEL - TYPE 1	SQ FT	1,522
72800100	TELESCOPING STEEL SIGN SUPPORT	FOOT	2,793
78100100	RAISED REFLECTIVE PAVEMENT MARKER	EACH	284

GENERAL NOTES

1. ALL RAISED REFLECTIVE PAVEMENT MARKERS SHALL BE DOUBLE AMBER.
2. SPACING OF RAISED REFLECTIVE PAVEMENT MARKERS TO BE DETERMINED BY THE ENGINEER.
3. LOCATIONS FOR MATERIALS WILL BE STAKED BY THE ENGINEER.



NOT TO SCALE

Sign and Raised Pavement Marker Schedule

Route	Location	Sign				Posts		# of Raised Pavement Markers
		Type	Designation	Size (In.)	Area (Sq. Ft.)	# of Signs	Length (Ft.)	
FAS 859	15	Chevron	W1-8	24 x 30	50.00	10	95	5
	15	Left Curve	W1-2L	36 x 36	9.00	1	19	1
	15	Right Curve	W1-2R	36 x 36	9.00	1	19	1
	15							28 (includes tan.)
	16	Chevron	W1-8	24 x 30	80.00	16	152	8
	16	Left Curve	W1-2L	36 x 36	9.00	1	19	1
	16	Right Curve	W1-2R	36 x 36	9.00	1	19	1
	16							30 (includes tan.)
FAS 853	17	Chevron	W1-8	24 x 30	40.00	8	76	4
	17	Left Curve	W1-2L	36 x 36	9.00	1	19	1
	17	Right Curve	W1-2R	36 x 36	9.00	1	19	1
	17	Advisory Speed	W13-1(25)	24 x 24	8.00	2	-	-
	17							6
FAS 1870	18	Chevron	W1-8	24 x 30	60.00	12	114	6
	18	Left Curve	W1-2L	36 x 36	9.00	1	19	1
	18	Right Curve	W1-2R	36 x 36	9.00	1	19	1
	18							
	19	Chevron	W1-8	24 x 30	60.00	12	114	6
	19	Left Curve	W1-2L	36 x 36	9.00	1	19	1
	19	Right Curve	W1-2R	36 x 36	9.00	1	19	1
	19	Advisory Speed	W13-1(45)	24 x 24	8.00	2	-	-
	19							
	20	Chevron	W1-8	24 x 30	40.00	8	76	4
	20	Reverse Curve	W1-5L	36 x 36	9.00	1	19	1
	20	Advisory Speed	W13-1(40)	24 x 24	4.00	1	-	-
	20							
	21	Chevron	W1-8	24 x 30	50.00	10	95	5
	21	Reverse Curve	W1-5R	36 x 36	9.00	1	19	1
	21	Advisory Speed	W13-1(40)	24 x 24	4.00	1	-	-
	21							