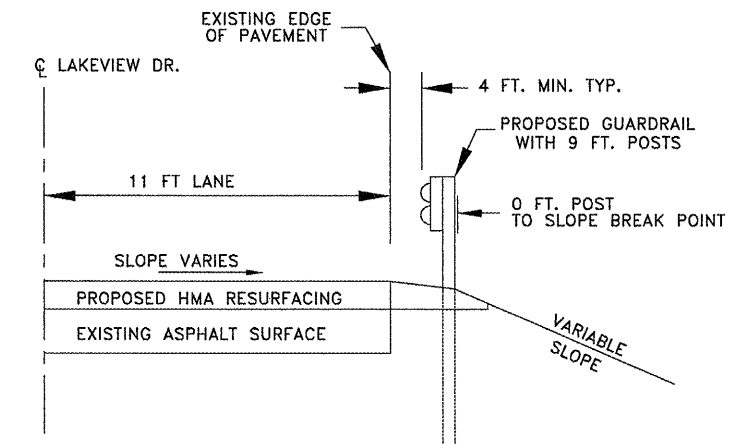
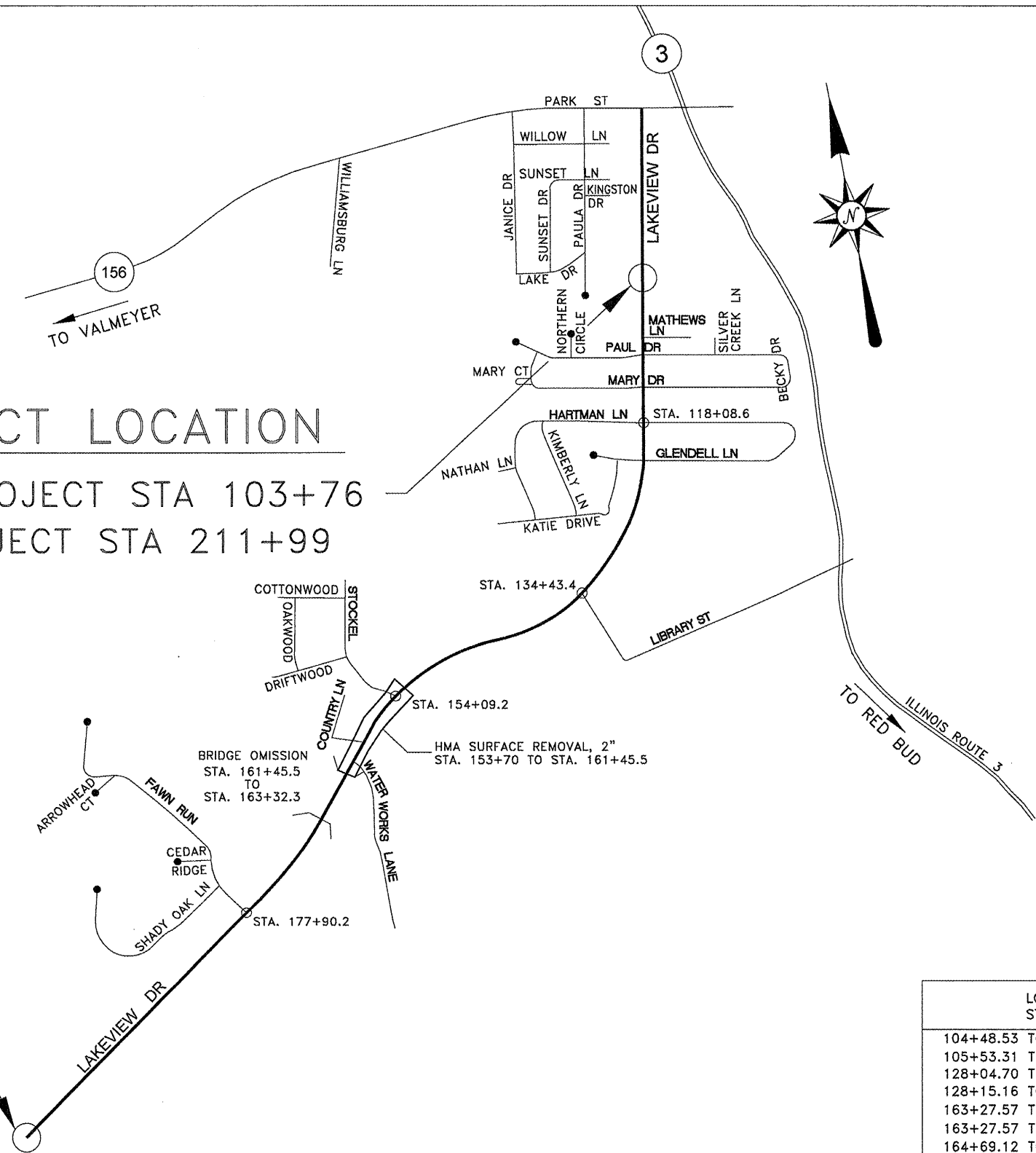


ROUTE NO	SECTION	COUNTY	TOTAL SHEETS	SHEET NO.
FAU 9314 C.H. 7	09-00034 -01-RS	MONROE	8	4

FEDERAL AID PROJECT
CONTRACT 97443

PROJECT LOCATION

BEGIN PROJECT STA 103+76
END PROJECT STA 211+99



PROPOSED GUARDRAIL SECTION
PER BLR 26-2
EXCEPT AS SHOWN ABOVE

* REFER TO SPECIAL PROVISIONS FOR GUARDRAIL/SHOULDER CONSTRUCTION SEQUENCING

GUARDRAIL SCHEDULE

LOCATION STATION	SIDE LT/RT	GUARDRAIL REMOVAL (FOOT)	STEEL PLATE BEAM GUARDRAIL, TYPE A (FOOT)	TRAFFIC BARRIER TERMINAL, TYPE 1 (SPECIAL) FLARED (EACH)	GUARDRAIL MARKERS, TYPE A (EACH)
104+48.53 TO 108+51.44	RIGHT	403.0	300.0	2	5
105+53.31 TO 107+93.95	LEFT	241.0	137.5	2	3
128+04.70 TO 133+76.22	LEFT	578.0	475.0	2	7
128+15.16 TO 133+73.13	RIGHT	553.0	450.0	2	7
163+27.57 TO 169+40.07	RIGHT	578.0	562.5	1	8
163+27.57 TO 164+35.11	LEFT	103.0	50.0	1	2
164+69.12 TO 171+70.18	LEFT	653.0	600.0	2	8
187+51.62 TO 191+18.37	LEFT	367.0	262.5	2	4
191+45.81 TO 195+87.03	LEFT	441.0	337.5	2	5
TOTALS	LEFT	3917	3175	16	49

CITY OF WATERLOO

LAKEVIEW DRIVE RESURFACING
PLAN, GUARDRAIL SCHEDULE
AND DETAIL
SECT. 09-00034-01-RS
CITY OF WATERLOO
MONROE COUNTY, ILLINOIS

DRAWING FILE: S:\lakeview\lakeviewresurf\cover1.dwg