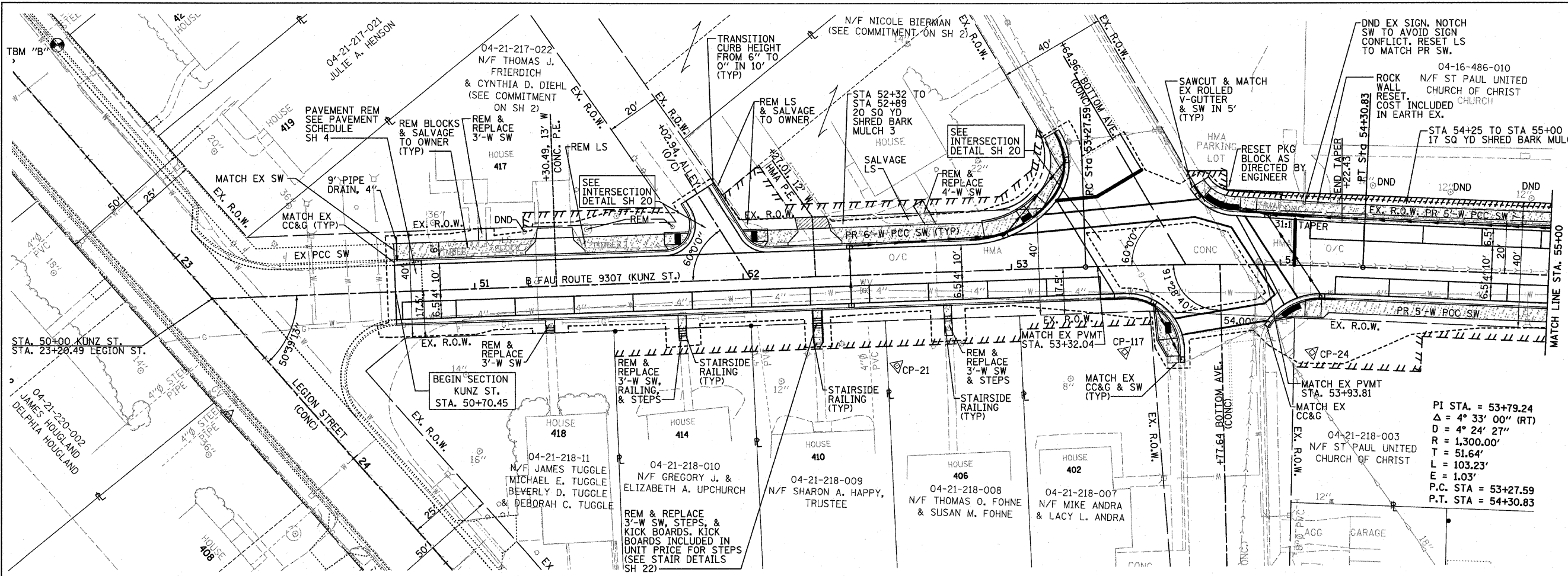


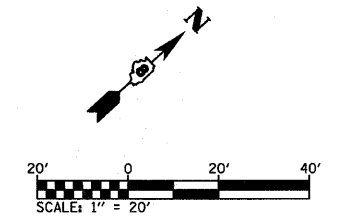
F.A.U. RTE.	SECTION	COUNTY	TOTAL SHEETS	SHEET NO.
930706-00042-02-PV		MONROE	32	8
STA. 50+00		TO STA. 55+00		
FED. ROAD DIST. NO. ILLINOIS FED. AID PROJECT				

DATE	BY

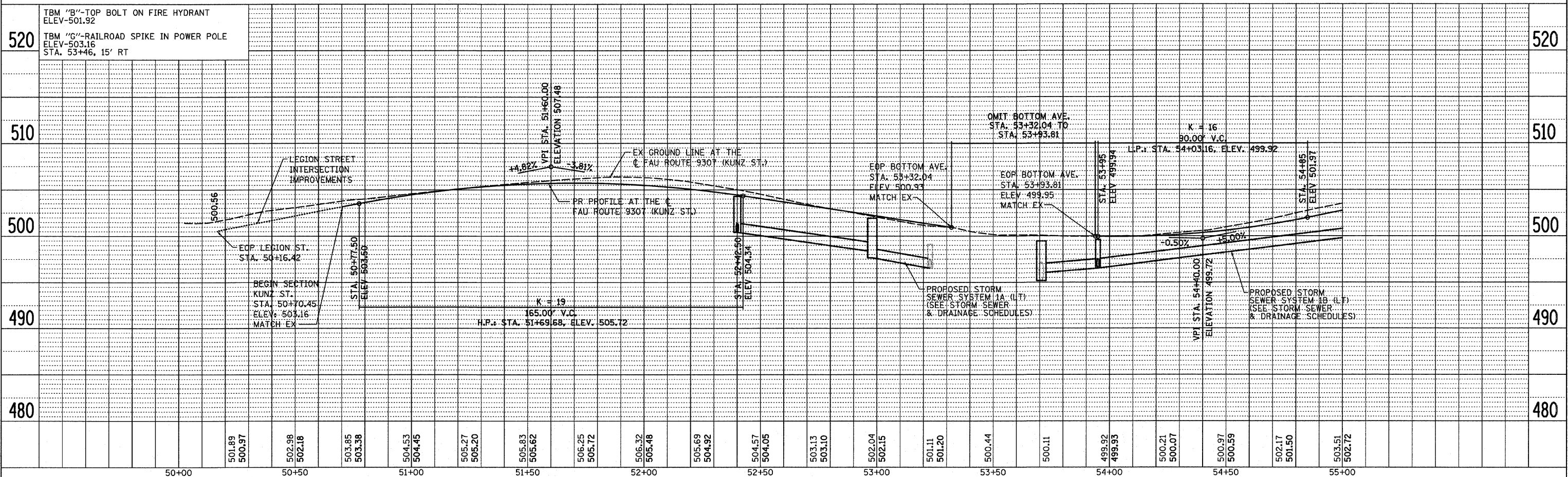
DATE	BY



- LEGEND**
- PROPOSED TEMPORARY CONSTRUCTION EASEMENT
 - - - - PROPOSED CONSTRUCTION LIMITS
 - ////// PROPOSED PERMANENT EASEMENT
 - DETECTABLE WARNINGS
 - ▨ INCIDENTAL HMA SURFACING
 - PCC SIDEWALK



PI STA. = 53+79.24
 $\Delta = 4^\circ 33' 00''$ (RT)
 $D = 4^\circ 24' 27''$
 $R = 1,300.00'$
 $T = 51.64'$
 $L = 103.23'$
 $E = 1.03'$
 P.C. STA = 53+27.59
 P.T. STA = 54+30.83



PLT DATE = 4/22/2010
 FILE NAME = H:\P\21002\Microstation\PL_Kunz.dgn
 USER NAME = Frank

PLAN AND PROFILE - STA. 50+70.45 TO STA. 55+00 KUNZ ST.