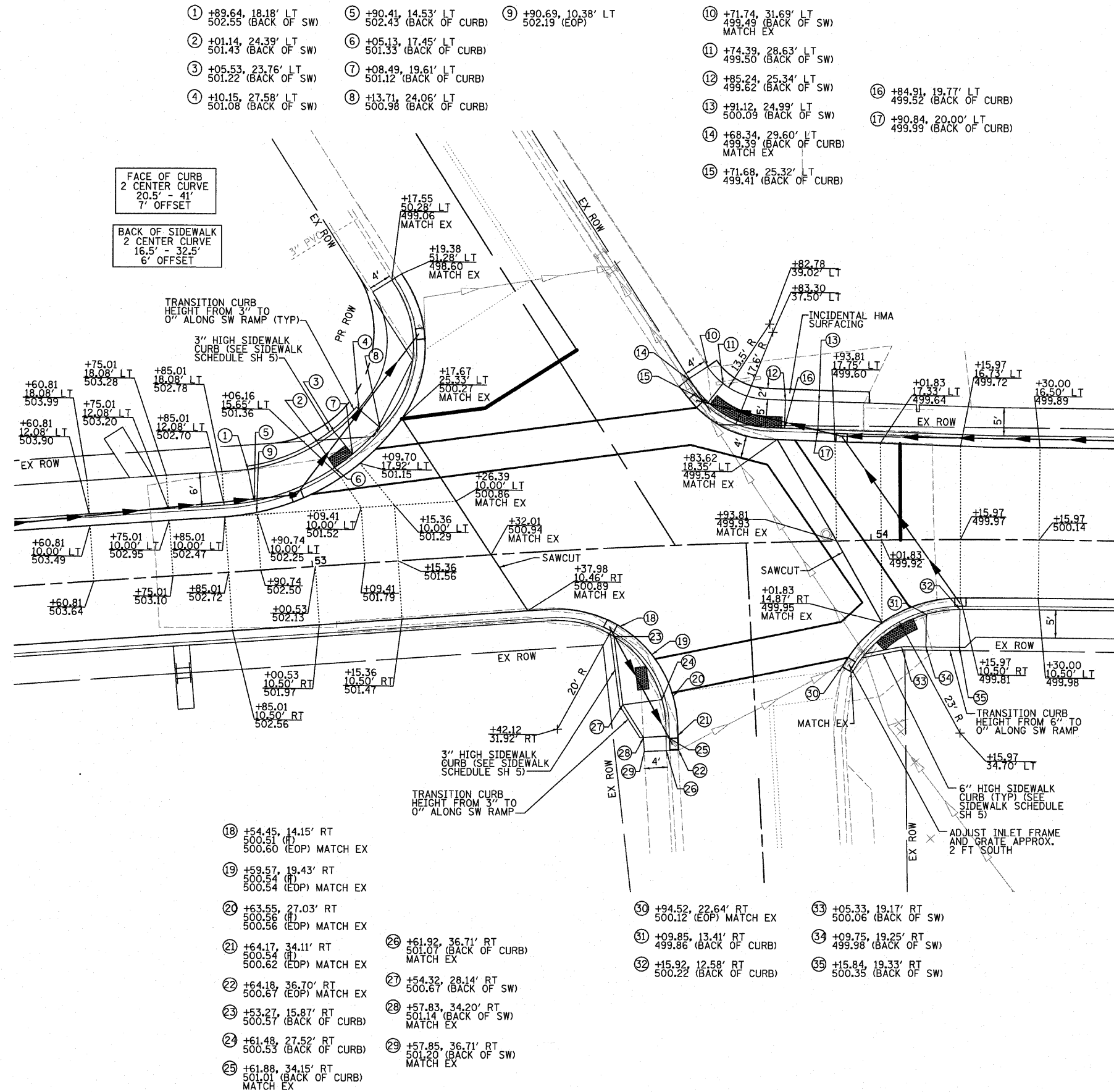


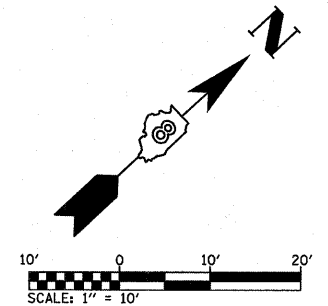
F.A.U. RTE.	SECTION	COUNTY	TOTAL SHEETS	SHEET NO.
9307	06-00042-02-PV	MONROE	32	21
INTERSECTION DETAILS				
CONTRACT NO. 97444				
FEDERAL AID PROJECT				



- ① +89.64, 18.18' LT
502.55' (BACK OF SW)
- ② +01.14, 24.39' LT
501.43' (BACK OF SW)
- ③ +05.53, 23.76' LT
501.22' (BACK OF SW)
- ④ +10.15, 27.58' LT
501.08' (BACK OF SW)
- ⑤ +90.41, 14.53' LT
502.43' (BACK OF CURB)
- ⑥ +05.13, 17.45' LT
501.33' (BACK OF CURB)
- ⑦ +08.49, 19.61' LT
501.12' (BACK OF CURB)
- ⑧ +13.71, 24.06' LT
500.98' (BACK OF CURB)
- ⑨ +90.69, 10.38' LT
502.19' (EOP)
- ⑩ +71.74, 31.69' LT
499.49' (BACK OF SW)
MATCH EX
- ⑪ +74.39, 28.63' LT
499.50' (BACK OF SW)
- ⑫ +85.24, 25.34' LT
499.62' (BACK OF SW)
- ⑬ +91.12, 24.99' LT
500.09' (BACK OF SW)
- ⑭ +68.34, 29.60' LT
499.39' (BACK OF CURB)
MATCH EX
- ⑮ +71.68, 25.32' LT
499.41' (BACK OF CURB)
- ⑯ +84.91, 19.77' LT
499.52' (BACK OF CURB)
- ⑰ +90.84, 20.00' LT
499.99' (BACK OF CURB)

- ⑱ +54.45, 14.15' RT
500.51' (EOP) MATCH EX
- ⑲ +59.57, 19.43' RT
500.54' (EOP) MATCH EX
- ⑳ +63.55, 27.03' RT
500.56' (EOP) MATCH EX
- ㉑ +64.17, 34.11' RT
500.54' (EOP) MATCH EX
- ㉒ +64.18, 36.70' RT
500.67' (EOP) MATCH EX
- ㉓ +53.27, 15.87' RT
500.57' (BACK OF CURB)
- ㉔ +61.48, 27.52' RT
500.53' (BACK OF CURB)
- ㉕ +61.88, 34.15' RT
501.01' (BACK OF CURB)
MATCH EX
- ㉖ +61.92, 36.71' RT
501.07' (BACK OF CURB)
MATCH EX
- ㉗ +54.32, 28.14' RT
500.67' (BACK OF SW)
- ㉘ +57.83, 34.20' RT
501.14' (BACK OF SW)
MATCH EX
- ㉙ +57.85, 36.71' RT
501.20' (BACK OF SW)
MATCH EX
- ㉚ +94.52, 22.64' RT
500.12' (EOP) MATCH EX
- ㉛ +09.85, 13.41' RT
499.86' (BACK OF CURB)
- ㉜ +15.92, 12.58' RT
500.22' (BACK OF CURB)
- ㉝ +05.33, 19.17' RT
500.06' (BACK OF SW)
- ㉞ +09.75, 19.25' RT
499.98' (BACK OF SW)
- ㉟ +15.84, 19.33' RT
500.35' (BACK OF SW)

INTERSECTION LAYOUT
BOTTOM AVENUE AND KUNZ STREET



PLOT DATE = 4/22/2019
 FILE NAME = H:\Projects\9307-Monroe\Station\506c.dwg\Intersection_Kunz.dgn
 USER NAME = rjw
 PLOT SCALE = 1" = 10'
 PLOT SHEET = 21 of 32