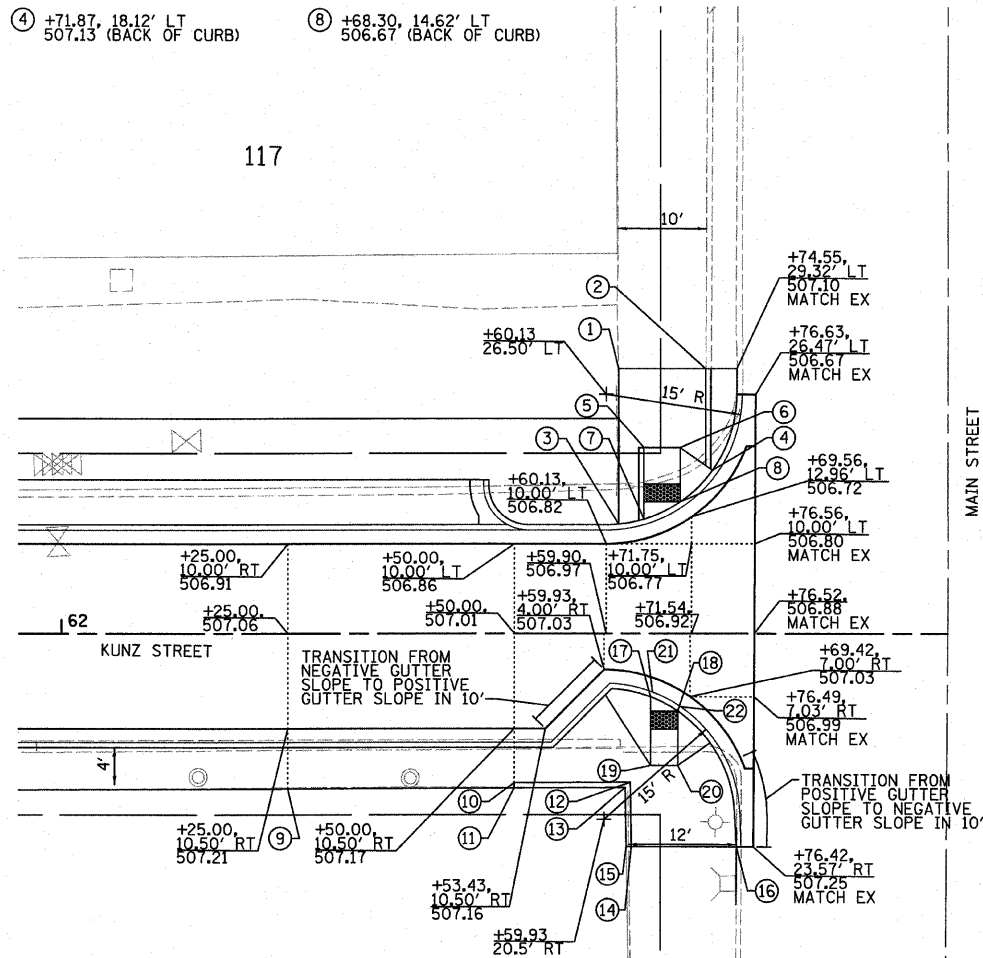


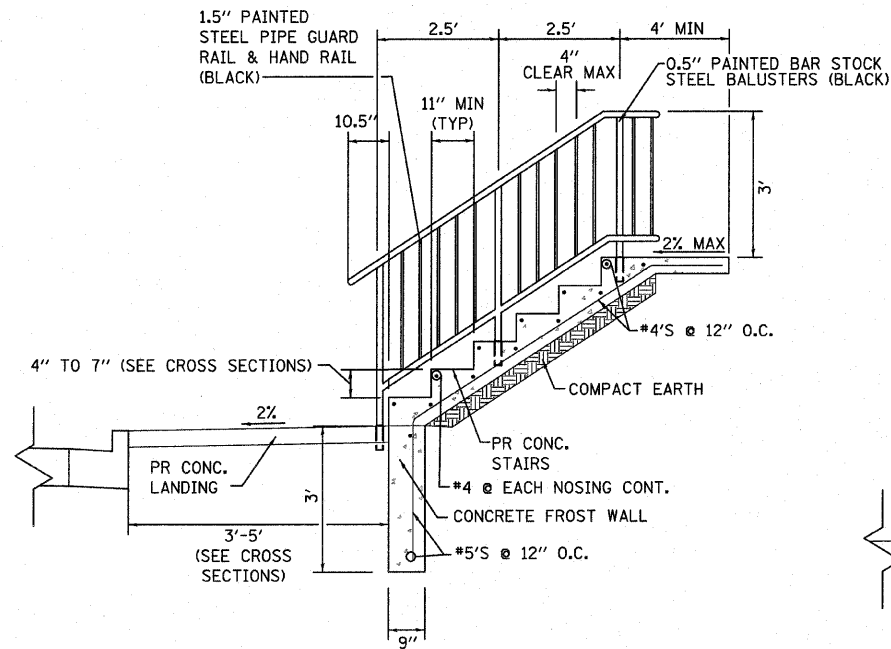
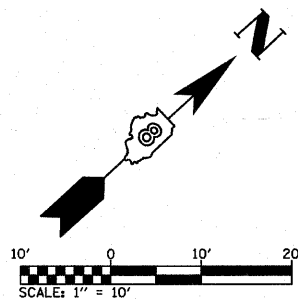
F.A.U. RTE.	SECTION	COUNTY	TOTAL SHEETS	SHEET NO.
9307	06-00042-02-PV	MONROE	32	23
INTERSECTION & STAIR DETAILS				
CONTRACT NO. 97444				
FEDERAL AID PROJECT				

- ① +61.51, 29.32' LT
507.71 MATCH EX
- ② +71.11, 29.32' LT
507.56 MATCH EX
- ③ +61.51, 12.51' LT
507.22 (BACK OF CURB)
- ④ +71.87, 18.12' LT
507.13 (BACK OF CURB)
- ⑤ +64.30, 20.62' LT
507.26 (BACK OF RAMP)
- ⑥ +68.30, 20.62' LT
507.18 (BACK OF RAMP)
- ⑦ +64.30, 12.70' LT
506.72 (BACK OF CURB)
- ⑧ +68.30, 14.62' LT
506.67 (BACK OF CURB)



- ⑨ +25.00, 17.17' RT
507.72 (BACK OF SW)
MATCH EX BLDG
- ⑩ +50.00, 16.49' RT
507.66 (BACK OF SW)
- ⑪ +50.00, 17.07' RT
507.90 (BACK OF CURB)
MATCH EX BLDG
- ⑫ +62.82, 16.44' RT
507.56 (BACK OF SW)
- ⑬ +62.25, 17.02' RT
508.00 (BACK OF CURB)
MATCH EX BLDG
- ⑭ +62.94, 23.51' RT
508.04 (BACK OF SW)
- ⑮ +62.36, 23.51' RT
508.06 (BACK OF CURB)
MATCH EX BLDG
- ⑯ +74.54, 23.56' RT
507.65 (BACK OF CURB)
MATCH EX
- ⑰ +65.05, 7.02' RT
507.16 (BACK OF CURB)
- ⑱ +68.05, 8.59' RT
506.99 (BACK OF CURB)
- ⑲ +62.82, 16.44' RT
507.50 (BACK OF RAMP)
- ⑳ +68.05, 14.59' RT
507.44 (BACK OF RAMP)
- ㉑ +65.26, 6.48' RT
507.12 (R)
- ㉒ +68.38, 8.11' RT
507.12 (R)

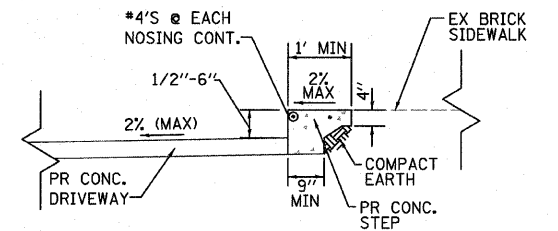
INTERSECTION LAYOUT
MAIN STREET AND KUNZ STREET



TYPICAL STAIR CASE DETAIL "A"

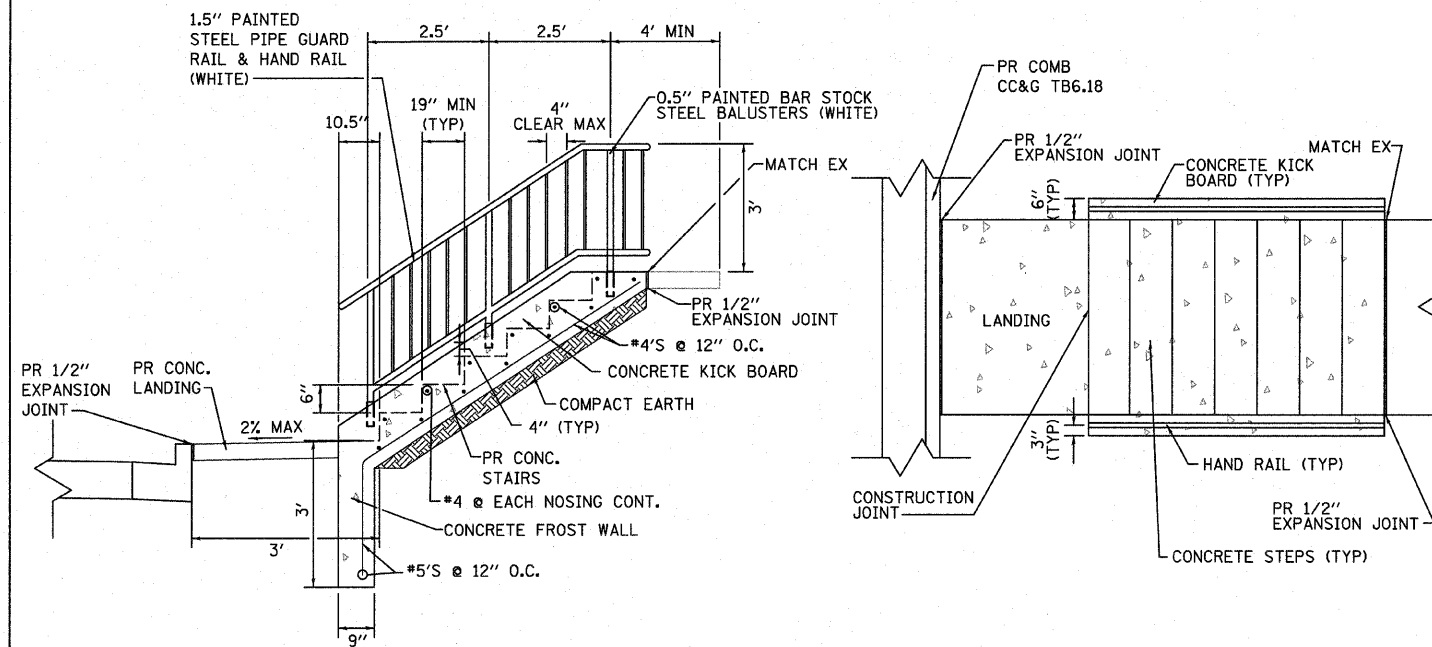
(FOR STAIR CASES WITH 2 OR MORE STEPS)

STA. 51+27.65, RT
STA. 51+76.83, RT
STA. 52+75.69, RT



TYPICAL STEP DETAIL "B"

(FOR STAIR CASES WITH 1 STEP)
STA. 58+52.66, RT



STAIR CASE WITH KICK BOARDS

STA. 52+27.01, RT

PLOT DATE = 4/21/2010
 FILE NAME = H:\V\9992\Whorestation\9686d\g\Intersection_Kunz.dgn
 USER NAME = Feng