

BENCHMARK: T.B.M. R.R. spike in Power Pole
Sta. 107+99.86, 50.7' Rt.
El. 456.080

CURVE DATA

PI STA. = 104+57.71
Δ = 2° 28' 00" (LT)
D = 0° 30' 00"
R = 11,459.16'
T = 246.70'
L = 493.33'
E = 2.66'
P.C. STA. = 102+11.01
P.T. STA. = 107+04.34

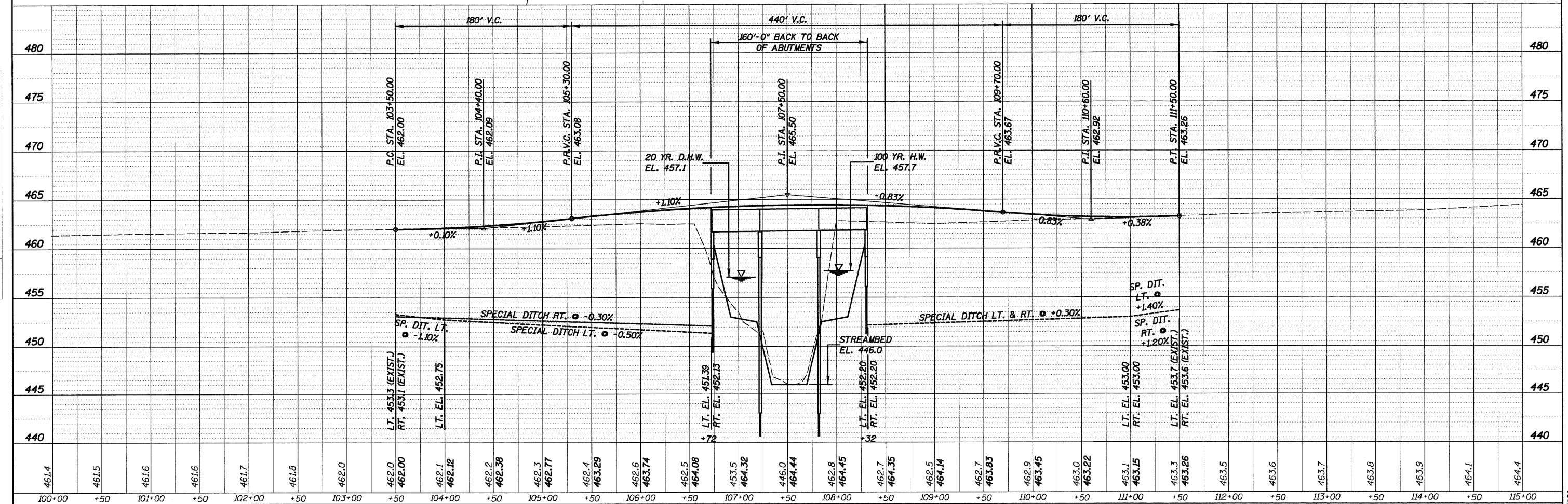
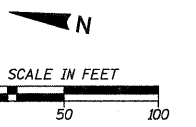
LOCUST FORK ACRES TRUST

LOCUST FORK ACRES TRUST

LINUS W. NEUMANN TRUST

DATE	
BY	
PLAN	
DATE	
BY	
PROFILE	
DATE	
BY	

BEGIN CONSTRUCTION STA. 103+50



FILE NAME h:\2500\04_plpf_5250.dgn	USER NAME - USERDESCR -	DESIGNED - K.M.M.	REVISED -	<p align="center">STATE OF ILLINOIS DEPARTMENT OF TRANSPORTATION</p> <p align="center">PLAN & PROFILE EXISTING & PROPOSED ROADWAY</p>	F.A.S. RTE. 783	SECTION 02-00074-00-BR	COUNTY BOND	TOTAL SHEETS 25	SHEET NO. 4
PLOT SCALE = 49.9999" / IN.	CHECKED - L.D.G.	REVISED -	S.N. 003-3050		CONTRACT NO. 97446				
PLOT DATE = 4/22/2010	DATE	REVISED -	ILLINOIS FED. AID PROJECT						
HENRY, MEISENHEIMER & GENDE, INC. CONSULTING ENGINEERS		1075 LAKE RD., P.O. BOX 70 CARLYLE, ILLINOIS 62231 (618) 594-3711 WWW.HMGENGINEERS.COM			ILLINOIS FED. AID PROJECT				