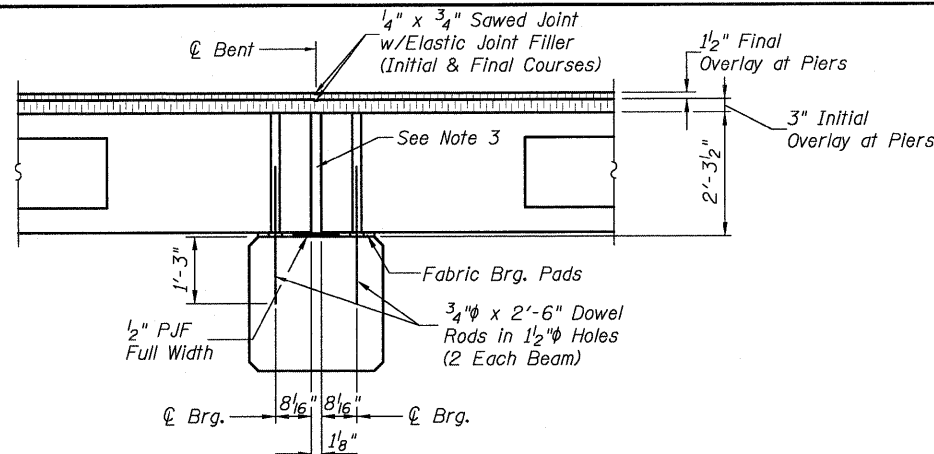
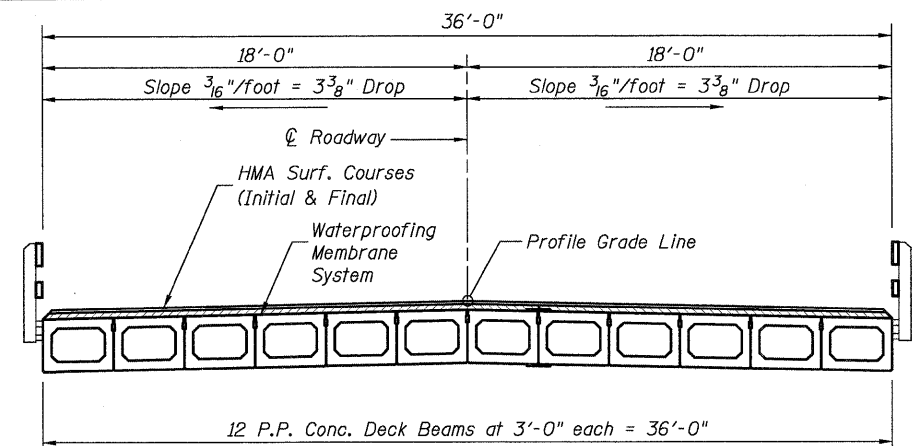


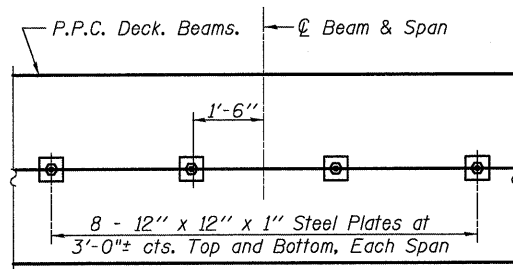
SECTION AT ABUTS.
(Along C Beams)



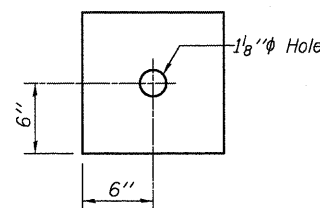
SECTION AT PIERS
(Along C Beams)



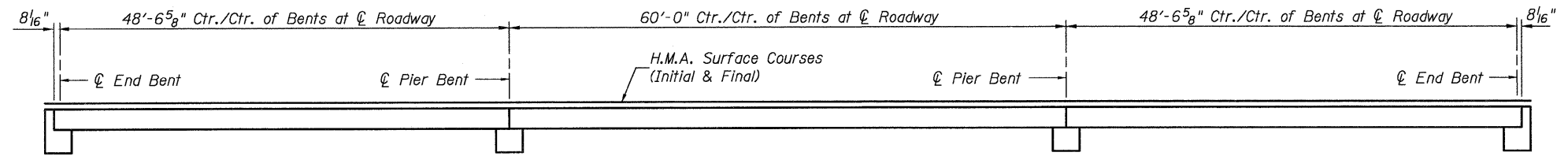
CROSS SECTION
(Looking South)



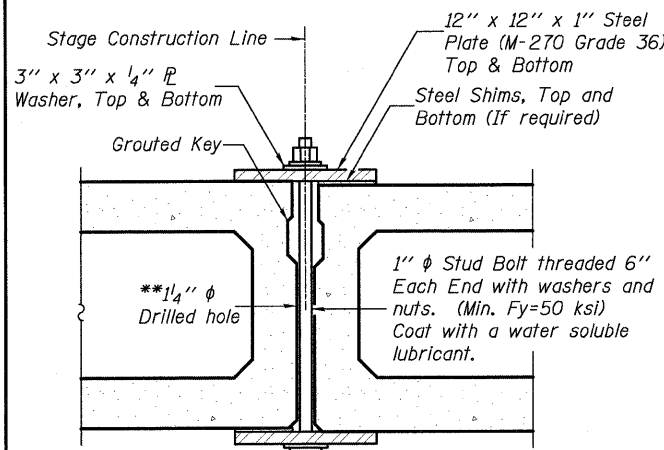
PLAN



CLAMPING PLATE



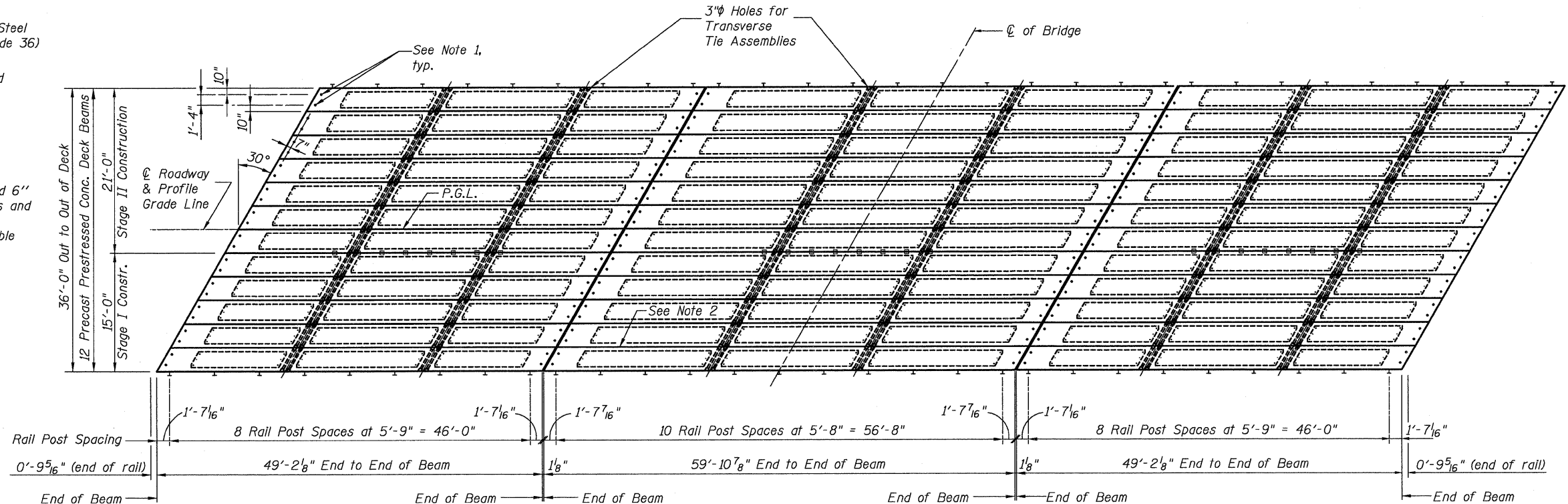
ELEVATION



SHEAR KEY CLAMPING DETAILS AT STAGE CONST. JT.

Cost included with Precast Prestressed Concrete Deck Beams.
See Stage Construction Details for traffic lanes.

** As an alternate to the drilled holes, the Contractor may request the Fabricator to cast 2 inch diameter semi-circular recesses in the sides of each beam adjacent to the stage construction line. These recesses should align to form a hole at the appropriate locations for the clamping device bolts. If the Contractor elects to use this alternate, the details shall be identified on the shop drawings.



PLAN

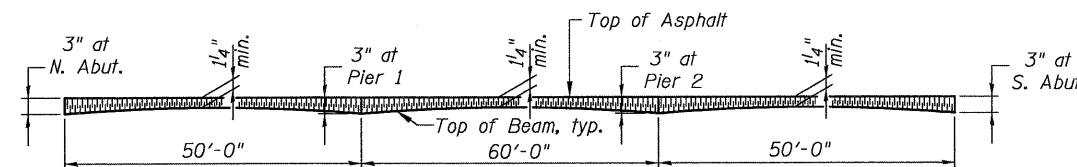
BILL OF MATERIAL

Item	Unit	Quantity
Portland Cement Mortar Fairing Course	Foot	1,741
Waterproofing Membrane System	Sq. Yd.	634
Hot-Mix Asphalt Surf. Cse., Mix "C", N70	Ton	151

NOTES

- After beams have been erected, holes shall be drilled into substructure and anchor dowels placed. Dowel holes shall be filled with non-shrink grout to top of beam and allowed to cure min. 24 hrs. prior to grouting the shear keys.
- Longitudinal keys shall be grouted.
- Nominal 1 inch joint at C Piers shall be filled with non-shrink grout.

DESIGNED	K.M.M.
CHECKED	L.D.G.
DRAWN	K.H.L.
CHECKED	B.G.H.



PROFILE OF INITIAL OVERLAY
(1/2" Final Overlay)

SHEET NO. 4	SECTION		COUNTY	TOTAL SHEETS	SHEET NO.
	F.A.S.	783			
14 SHEETS	S.N. 003-3050		BOND	25	11
	FED. ROAD DIST. NO.		ILLINOIS	FED. AID PROJECT	

SUPERSTRUCTURE