



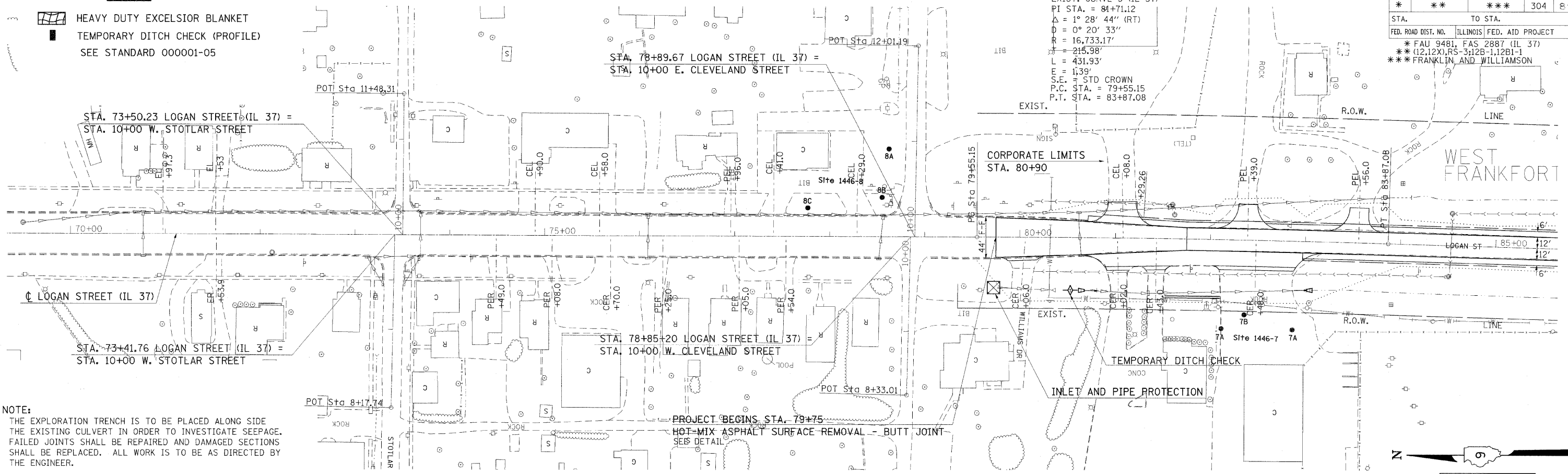
F.A. RTE.	SECTION	COUNTY	TOTAL SHEETS	SHEET NO.
*	**	***	304	89

STA.	TO STA.
FED. ROAD DIST. NO.	ILLINOIS FED. AID PROJECT
* FAU 9481, FAS 2887 (IL 37)	
** (12.12X), RS-3512B-1, 12B1-1	
*** FRANKLIN AND WILLIAMSON	

EXIST. CURVE 3 (IL 37)
 PI STA. = 81+71.12
 $\Delta = 1^\circ 28' 44''$ (RT)
 $D = 0^\circ 20' 33''$
 $R = 16,733.17'$
 $T = 215.98'$
 $L = 431.93'$
 $E = 1:39'$
 S.E. = STD CROWN
 P.C. STA. = 79+55.15
 P.T. STA. = 83+87.08

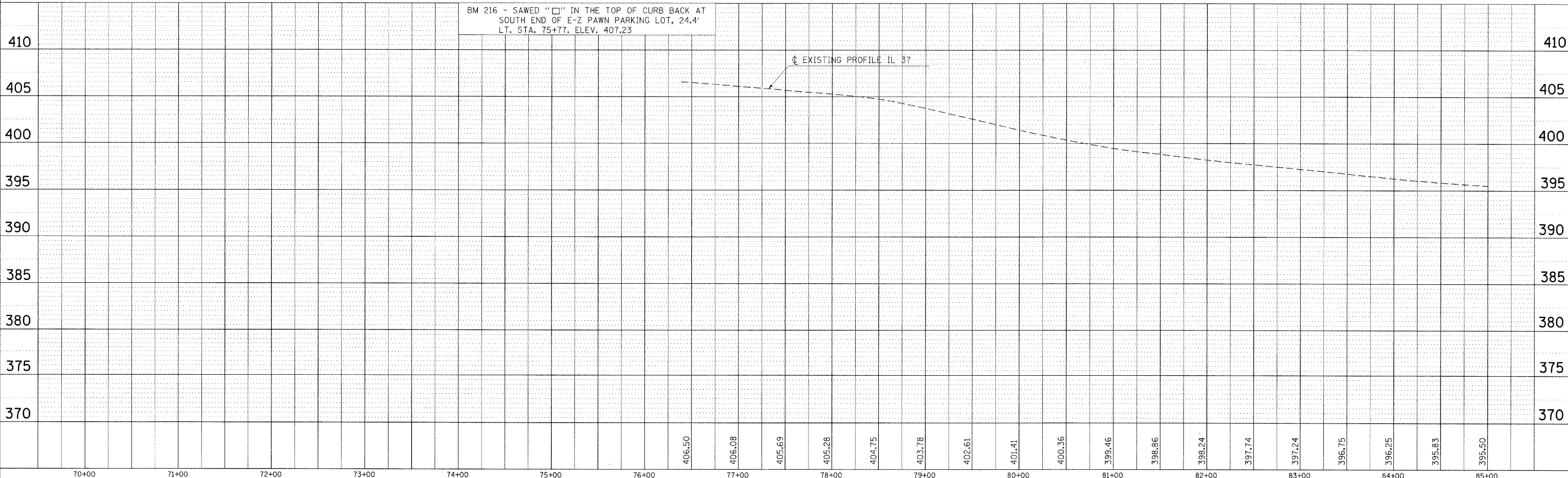
LEGEND

-  HEAVY DUTY EXCELSIOR BLANKET
-  TEMPORARY DITCH CHECK (PROFILE)
- SEE STANDARD 000001-05



NOTE:
 THE EXPLORATION TRENCH IS TO BE PLACED ALONG SIDE THE EXISTING CULVERT IN ORDER TO INVESTIGATE SEEPAGE. FAILED JOINTS SHALL BE REPAIRED AND DAMAGED SECTIONS SHALL BE REPLACED. ALL WORK IS TO BE AS DIRECTED BY THE ENGINEER.

BM 216 - SAWED "□" IN THE TOP OF CURB BACK AT SOUTH END OF E-Z PAWN PARKING LOT, 24.4' LT. STA. 75+77. ELEV. 407.23



EROSION CONTROL STA. 70+00 TO STA. 85+00

PLAN	DATE
BY	
CHECKED	
APPROVED	
NO.	

PLOT DATE = 12/7/2009
 FILE NAME = c:\pwworkspace\headon\dm43650\1094063\pldgn
 PLOT SCALE = 50.0000 / IN.
 USER NAME = headon