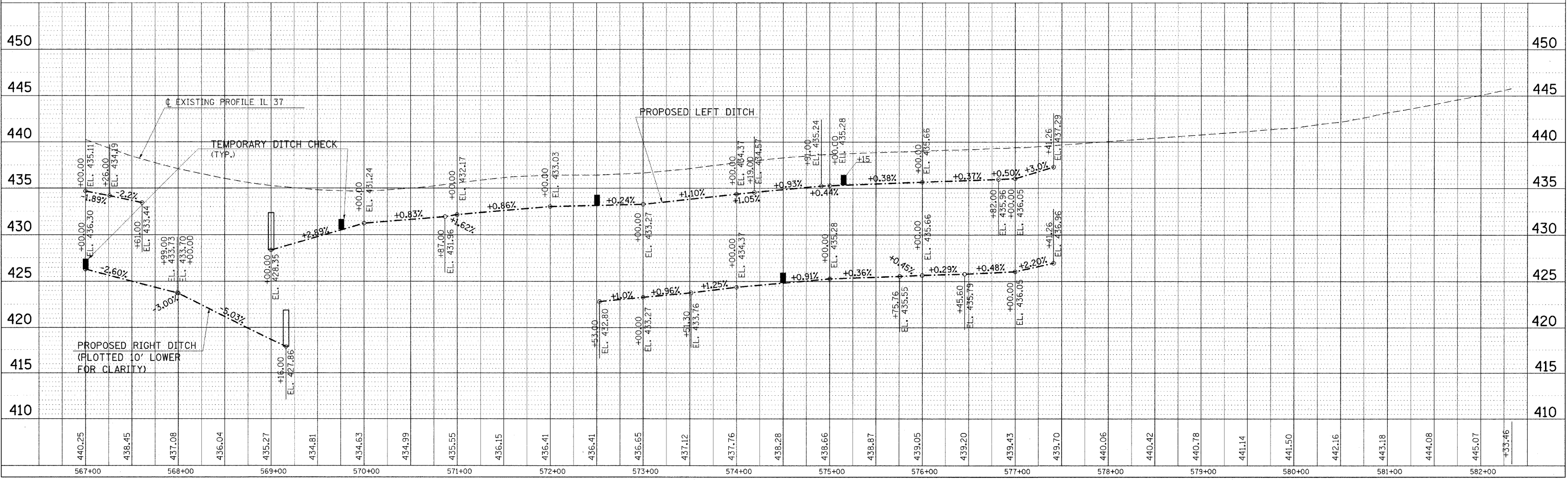
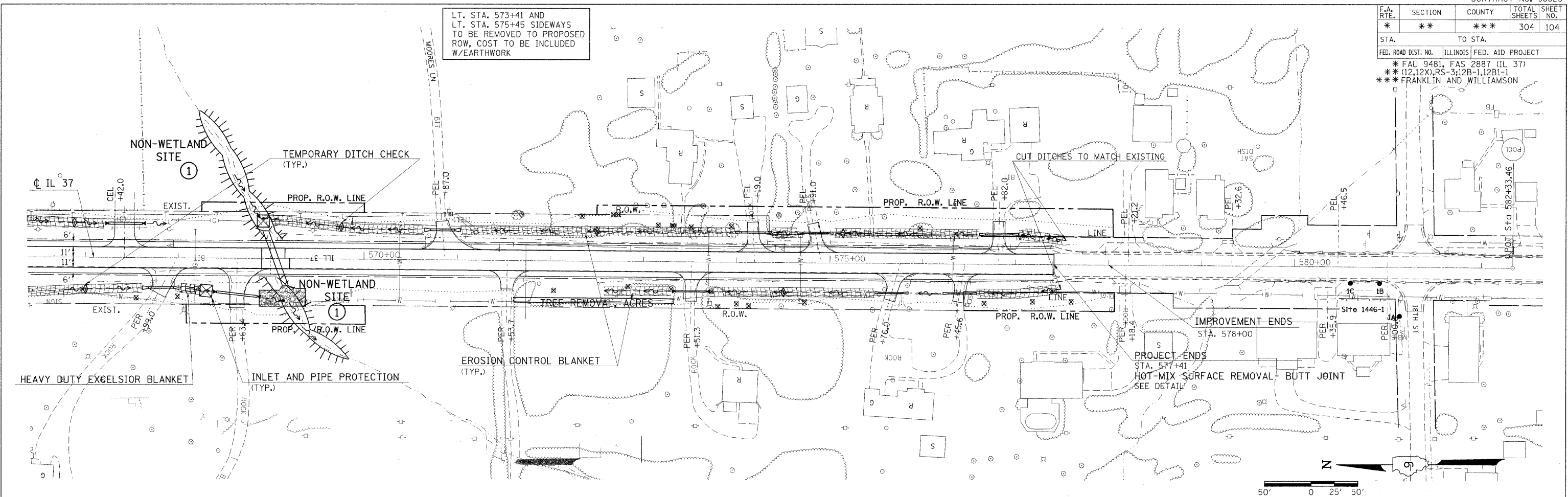


F.A. RTE.	SECTION	COUNTY	TOTAL SHEETS	SHEET NO.
*	**	***	304	104

STA.	TO STA.
FED. ROAD DIST. NO.	ILLINOIS FED. AID PROJECT
* FAU 9481, FAS 2887 (IL 37)	
** (12.12X), RS-3; 12B-1, 12B1-1	
*** FRANKLIN AND WILLIAMSON	

LT. STA. 573+41 AND LT. STA. 575+45 SIDWAYS TO BE REMOVED TO PROPOSED ROW, COST TO BE INCLUDED W/EARTHWORK

DATE	
BY	
REVISION	
NO.	
DESCRIPTION	



PLOT DATE = 12/7/2009
 FILE NAME = c:\pwworking\mvd\1007\EROSION.dwg
 SCALE = 1/8" = 1' IN.
 USER = mvd