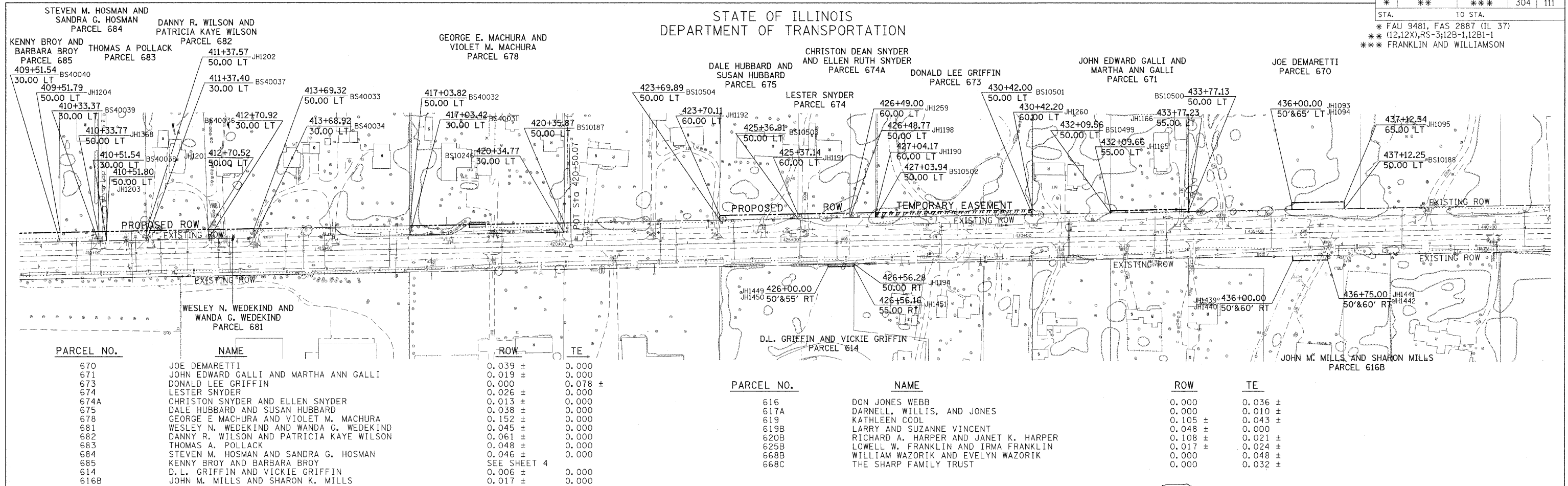


F.A. RTE.	SECTION	COUNTY	TOTAL SHEETS	SHEET NO.
*	**	***	304	111

STATE OF ILLINOIS
DEPARTMENT OF TRANSPORTATION

* FAU 9481, FAS 2887 (IL 37)
** (12,12X),RS-3;12B-1,12B1-1
*** FRANKLIN AND WILLIAMSON



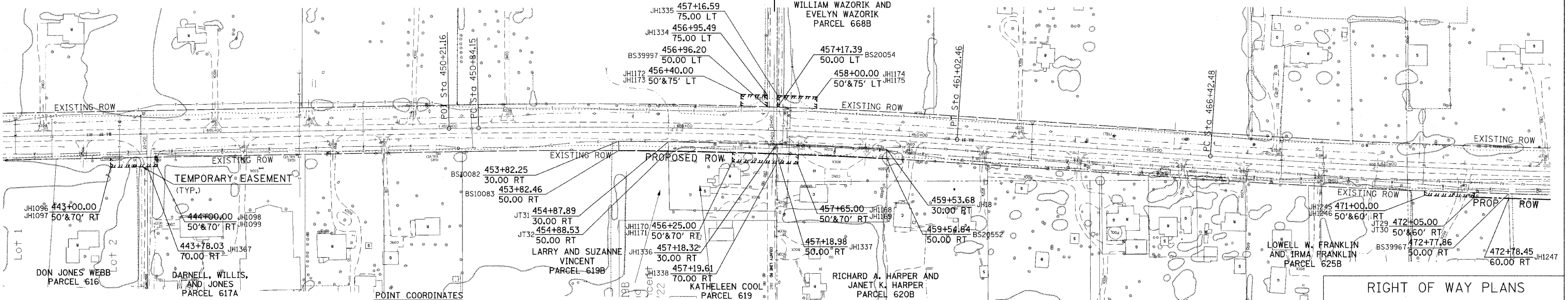
PARCEL NO.	NAME	ROW	TE
670	JOE DEMARETTI	0.039 ±	0.000
671	JOHN EDWARD GALLI AND MARTHA ANN GALLI	0.019 ±	0.000
673	DONALD LEE GRIFFIN	0.000	0.078 ±
674	LESTER SNYDER	0.026 ±	0.000
674A	CHRISTON SNYDER AND ELLEN SNYDER	0.013 ±	0.000
675	DALE HUBBARD AND SUSAN HUBBARD	0.038 ±	0.000
678	GEORGE E MACHURA AND VIOLET M. MACHURA	0.152 ±	0.000
681	WESLEY N. WEDEKIND AND WANDA G. WEDEKIND	0.045 ±	0.000
682	DANNY R. WILSON AND PATRICIA KAYE WILSON	0.061 ±	0.000
683	THOMAS A. POLLACK	0.048 ±	0.000
684	STEVEN M. HOSMAN AND SANDRA G. HOSMAN	0.046 ±	0.000
685	KENNY BROY AND BARBARA BROY	SEE SHEET 4	
614	D.L. GRIFFIN AND VICKIE GRIFFIN	0.006 ±	0.000
616B	JOHN M. MILLS AND SHARON K. MILLS	0.017 ±	0.000

PARCEL NO.	NAME	ROW	TE
616	DON JONES WEBB	0.000	0.036 ±
617A	DARNELL, WILLIS, AND JONES	0.000	0.010 ±
619	KATHLEEN COOL	0.105 ±	0.043 ±
619B	LARRY AND SUZANNE VINCENT	0.048 ±	0.000
620B	RICHARD A. HARPER AND JANET K. HARPER	0.108 ±	0.021 ±
625B	LOWELL W. FRANKLIN AND IRMA FRANKLIN	0.017 ±	0.024 ±
668B	WILLIAM WAZORIK AND EVELYN WAZORIK	0.000	0.048 ±
668C	THE SHARP FAMILY TRUST	0.000	0.032 ±

EXIST. CURVE 7
PI STA. = 455+93.61 L = 1,018.31'
Δ = 4° 50' 14" (RT) E = 10.75'
D = 0° 28' 30" S.E. RUN = STD CROWN
R = 12,061.27' P.C. STA. = 450+84.15
T = 509.46' P.T. STA. = 461+02.46

Franklin Co. Williamson Co.
THE SHARP FAMILY TRUST
PARCEL 668C

EXIST. CURVE 8
PI STA. = 471+88.12 L = 1,090.92'
Δ = 3° 36' 24" (LT) E = 8.59'
D = 0° 19' 50" S.E. RUN = STD CROWN
R = 17,330.91' P.C. STA. = 466+42.48
T = 545.64' P.T. STA. = 477+33.40



POINT COORDINATES

PT JH18	X	811274.29	Y	435592.02
PT JH1093	X	811342.20	Y	437944.43
PT JH1094	X	811357.20	Y	437944.71
PT JH1095	X	811359.27	Y	437832.19
PT JH1096	X	811255.12	Y	437242.71
PT JH1097	X	811235.12	Y	437242.34
PT JH1098	X	811236.96	Y	437142.36
PT JH1099	X	811256.96	Y	437142.73
PT JH1165	X	811340.00	Y	438334.80
PT JH1166	X	811343.09	Y	438167.26
PT JH1168	X	811262.92	Y	435780.79
PT JH1169	X	811242.94	Y	435781.55
PT JH1170	X	811247.42	Y	435920.66
PT JH1171	X	811267.42	Y	435920.13
PT JH1172	X	811366.97	Y	435902.44
PT JH1173	X	811391.96	Y	435901.75
PT JH1174	X	811386.44	Y	435740.85
PT JH1175	X	811361.47	Y	435741.87
PT JH1190	X	811335.69	Y	438840.30
PT JH1191	X	811332.61	Y	439007.30
PT JH1192	X	811329.53	Y	439174.30
PT JH1194	X	811224.82	Y	438886.15
PT JH1198	X	811324.67	Y	438895.50
PT JH1201	X	811298.79	Y	440273.54
PT JH1202	X	811296.27	Y	440406.47
PT JH1203	X	811294.63	Y	440492.22
PT JH1204	X	811292.73	Y	440592.21
PT JH1245	X	811185.63	Y	434448.16
PT JH1246	X	811175.63	Y	434448.56
PT JH1247	X	811169.46	Y	434269.60
PT JH1259	X	811334.67	Y	438895.46
PT JH1260	X	811341.92	Y	438502.32
PT JH1334	X	811390.29	Y	435845.94
PT JH1335	X	811389.59	Y	435824.72
PT JH1336	X	811284.59	Y	435826.54
PT JH1337	X	811264.58	Y	435826.59
PT JH1338	X	811244.57	Y	435826.64
PT JH1367	X	811236.56	Y	437164.33
PT JH1368	X	811294.29	Y	440510.24
PT JH1439	X	811242.22	Y	437942.59
PT JH1440	X	811232.22	Y	437942.41
PT JH1441	X	811233.60	Y	437867.42
PT JH1442	X	811243.60	Y	437867.60
PT JH1449	X	811223.79	Y	438942.42
PT JH1450	X	811218.79	Y	438942.33
PT JH1451	X	811219.82	Y	438886.17
PT JH1439	X	811291.37	Y	436161.71
PT BS10083	X	811271.37	Y	436161.63
PT BS10187	X	811313.37	Y	439508.33
PT BS10188	X	811344.27	Y	437832.21
PT BS10246	X	811233.35	Y	439509.05
PT BS10499	X	811335.00	Y	438334.80
PT BS10500	X	811338.09	Y	438167.27
PT BS10501	X	811331.92	Y	438502.34
PT BS10502	X	811325.69	Y	438840.34
PT BS10503	X	811322.61	Y	439007.34
PT BS10504	X	811319.53	Y	439174.34
PT BS20054	X	811364.58	Y	435824.76
PT BS20552	X	811254.26	Y	435591.94
PT BS39967	X	811179.48	Y	434269.89
PT BS39997	X	811365.28	Y	435846.03
PT BS40031	X	811287.04	Y	439840.34
PT BS40032	X	811307.05	Y	439840.32
PT BS40033	X	811300.68	Y	440174.76
PT BS40034	X	811280.67	Y	440174.77
PT BS40036	X	811278.81	Y	440272.76
PT BS40037	X	811276.27	Y	440406.26
PT BS40038	X	811274.63	Y	440492.09
PT BS40039	X	811274.29	Y	440510.27
PT BS40040	X	811272.73	Y	440592.08

POINT COORDINATES

PT JH1170	X	456+25.00	Y	457+18.32
PT JH1171	X	457+18.32	Y	457+18.32
PT JH1172	X	456+40.00	Y	457+18.32
PT JH1173	X	456+40.00	Y	457+18.32
PT JH1174	X	456+95.49	Y	457+18.32
PT JH1175	X	456+95.49	Y	457+18.32
PT JH1176	X	457+16.59	Y	457+18.32
PT JH1177	X	457+16.59	Y	457+18.32
PT JH1178	X	457+16.59	Y	457+18.32
PT JH1179	X	457+16.59	Y	457+18.32
PT JH1180	X	457+16.59	Y	457+18.32
PT JH1181	X	457+16.59	Y	457+18.32
PT JH1182	X	457+16.59	Y	457+18.32
PT JH1183	X	457+16.59	Y	457+18.32
PT JH1184	X	457+16.59	Y	457+18.32
PT JH1185	X	457+16.59	Y	457+18.32
PT JH1186	X	457+16.59	Y	457+18.32
PT JH1187	X	457+16.59	Y	457+18.32
PT JH1188	X	457+16.59	Y	457+18.32
PT JH1189	X	457+16.59	Y	457+18.32
PT JH1190	X	457+16.59	Y	457+18.32
PT JH1191	X	457+16.59	Y	457+18.32
PT JH1192	X	457+16.59	Y	457+18.32
PT JH1193	X	457+16.59	Y	457+18.32
PT JH1194	X	457+16.59	Y	457+18.32
PT JH1195	X	457+16.59	Y	457+18.32
PT JH1196	X	457+16.59	Y	457+18.32
PT JH1197	X	457+16.59	Y	457+18.32
PT JH1198	X	457+16.59	Y	457+18.32
PT JH1199	X	457+16.59	Y	457+18.32
PT JH1200	X	457+16.59	Y	457+18.32
PT JH1201	X	457+16.59	Y	457+18.32
PT JH1202	X	457+16.59	Y	457+18.32
PT JH1203	X	457+16.59	Y	457+18.32
PT JH1204	X	457+16.59	Y	457+18.32
PT JH1205	X	457+16.59	Y	457+18.32
PT JH1206	X	457+16.59	Y	457+18.32
PT JH1207	X	457+16.59	Y	457+18.32
PT JH1208	X	457+16.59	Y	457+18.32
PT JH1209	X	457+16.59	Y	457+18.32
PT JH1210	X	457+16.59	Y	457+18.32
PT JH1211	X	457+16.59	Y	457+18.32
PT JH1212	X	457+16.59	Y	457+18.32
PT JH1213	X	457+16.59	Y	457+18.32
PT JH1214	X	457+16.59	Y	457+18.32
PT JH1215	X	457+16.59	Y	457+18.32
PT JH1216	X	457+16.59	Y	457+18.32
PT JH1217	X	457+16.59	Y	457+18.32
PT JH1218	X	457+16.59	Y	457+18.32
PT JH1219	X	457+16.59	Y	457+18.32
PT JH1220	X	457+16.59	Y	457+18.32
PT JH1221	X	457+16.59	Y	457+18.32
PT JH1222	X	457+16.59	Y	457+18.32
PT JH1223	X	457+16.59	Y	457+18.32
PT JH1224	X	457+16.59	Y	457+18.32
PT JH1225	X	457+16.59	Y	457+18.32
PT JH1226	X	457+16.59	Y	457+18.32
PT JH1227	X	457+16.59	Y	457+18.32
PT JH1228	X	457+16.59	Y	457+18.32
PT JH1229	X	457+16.59	Y	457+18.32
PT JH1230	X	457+16.59	Y	457+18.32
PT JH1231	X	457+16.59	Y	457+18.32
PT JH1232	X	457+16.59	Y	457+18.32
PT JH1233	X	457+16.59	Y	457+18.32
PT JH1234	X	457+16.59	Y	457+18.32
PT JH1235	X	457+16.59	Y	457+18.32
PT JH1236	X	457+16.59	Y	457+18.32
PT JH1237	X	457+16.59	Y	457+18.32
PT JH1238	X	457+16.59	Y	457+18.32
PT JH1239	X	457+16.59	Y	457+18.32
PT JH1240	X	457+16.59	Y	457+18.32
PT JH1241	X	457+16.59	Y	457+18.32
PT JH1242	X	457+16.59	Y	457+18.32
PT JH1243	X	457+16.59	Y	457+18.32
PT JH1244	X	457+16.59	Y	457+18.32
PT JH1245	X	457+16.59	Y	457+18.32
PT JH1246	X	457+16.59	Y	457+18.32
PT JH1247	X	457+16.59	Y	457+18.32
PT JH1248	X	457+16.59	Y	457+18.32
PT JH1249	X	457+16.59	Y	457+18.32
PT JH1250	X	457+16.59	Y	457+18.32
PT JH1251	X	457+16.59	Y	457+18.32
PT JH1252	X	457+16.59	Y	457+18.32
PT JH1253	X	457+16.59	Y	457+18.32
PT JH1254	X	457+16.59	Y	457+18.32
PT JH1255	X	457+16.59	Y	457+18.32
PT JH1256	X	457+16.59	Y	457+18.32
PT JH1257	X	457+16.59	Y	457+18.32
PT JH1258	X	457+16.59	Y	457+18.32
PT JH1259	X	457+16.59	Y	457+18.32
PT JH1260	X	457+16.59	Y	457+18.32
PT JH1261	X	457+16.59	Y	457+18.32
PT JH1262	X	457+16.59	Y	457+18.32
PT JH1263	X	457+16.59	Y	457+18.32
PT JH1264	X	457+16.59	Y	457+18.32
PT JH1265	X	457+16.59	Y	457+18.32
PT JH1266	X	457+16.59	Y	457+18.32
PT JH1267	X	457+16.59	Y	457+18.32
PT JH1268	X	457+16.59	Y	457+18.32
PT JH1269	X	457+16.59	Y	457+18.32
PT JH1270	X	457+16.59	Y	457+18.32
PT JH1271	X	457+16.59	Y	457+18.32
PT JH1272	X	457+16.59	Y	457+18.32
PT JH1273	X	457+16.59	Y	457+18.32
PT JH1274	X	457+16.59	Y	457+18.32
PT JH1275	X	457+16.59	Y	457+18.32
PT JH1276	X	457+16.59	Y	457+18.32
PT JH1277	X	457+16.59	Y	457+18.32
PT JH1278	X	457+16.59	Y	457+18.32
PT JH1279	X	457+16.59	Y	457+18.32
PT JH12				