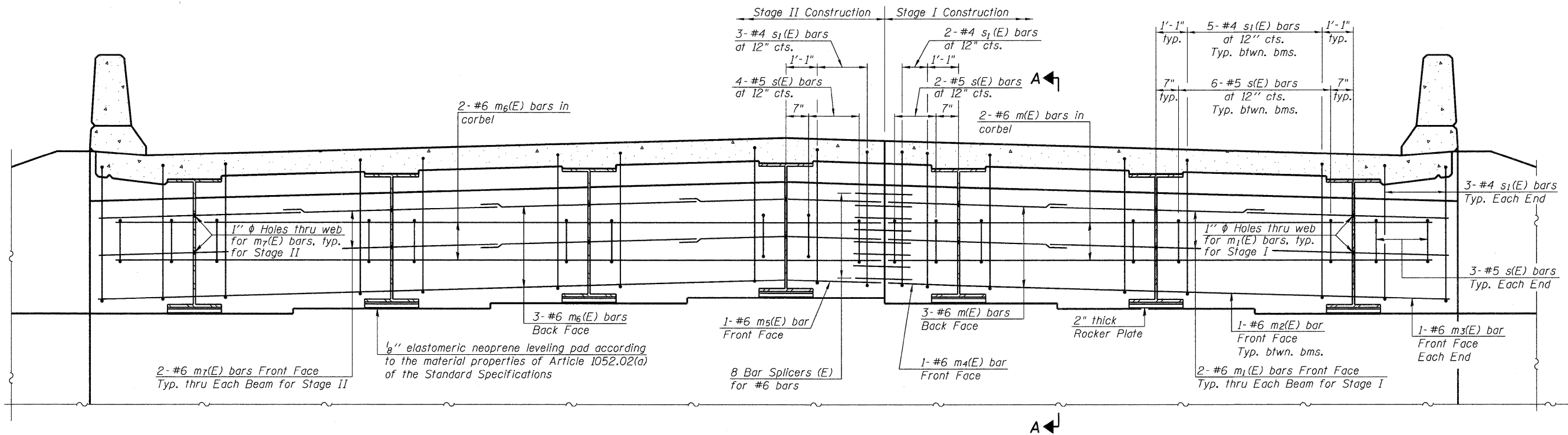


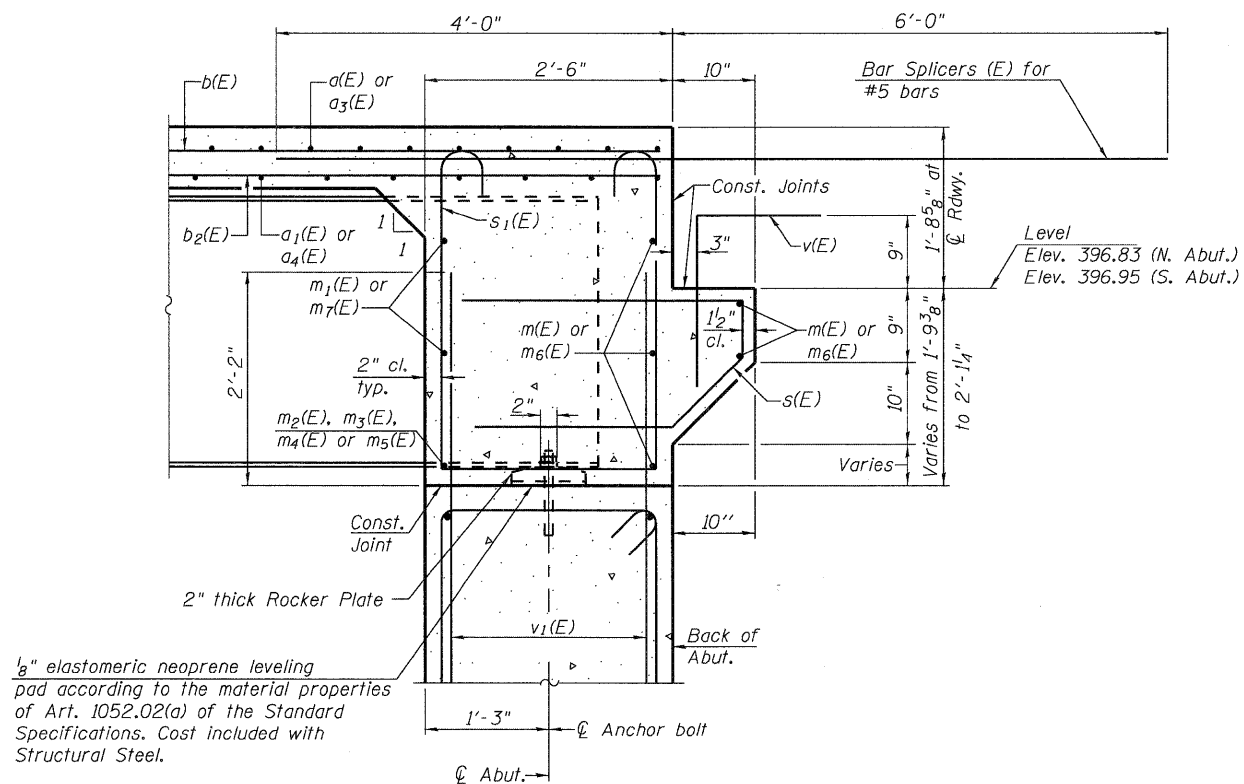
STATE OF ILLINOIS  
DEPARTMENT OF TRANSPORTATION



**DIAPHRAGM ELEVATION AT ABUTMENT**  
(North Abutment Shown, Looking North. South Abutment Similar.)

Notes:  
Reinforcement bars in diaphragm are billed with superstructure on sheet 12 of 29.  
Concrete in diaphragm is included with Concrete Superstructure on sheet 12 of 29.  
For details of bar v(E), see sheets 11 and 12 of 29.  
For details of bars s(E) & s<sub>1</sub>(E), see sheet 12 of 29.  
The s(E) and s<sub>1</sub>(E) bars shall be placed parallel to the beams.  
For details of bar v<sub>1</sub>(E), see sheets 19 and 20 of 29.

**MIN. BAR LAP**  
(Diaphragm)  
#6 bar = 2'-9"



**SECTION A-A**

**DIAPHRAGM DETAILS**  
**SN 028-0078**

DESIGNED	RLM
CHECKED	AMS
DRAWN	PRC
CHECKED	RLM



09/25/09

SHEET NO. 13 29 SHEETS	F.A.U. RTE. 9481	SECTION 12B1-1	COUNTY FRANKLIN	TOTAL SHEETS 304	SHEET NO. 139
	SN 028-0078		CONTRACT NO. 98823		
FED. ROAD DIST. NO. 7 ILLINOIS FED. AID PROJECT					