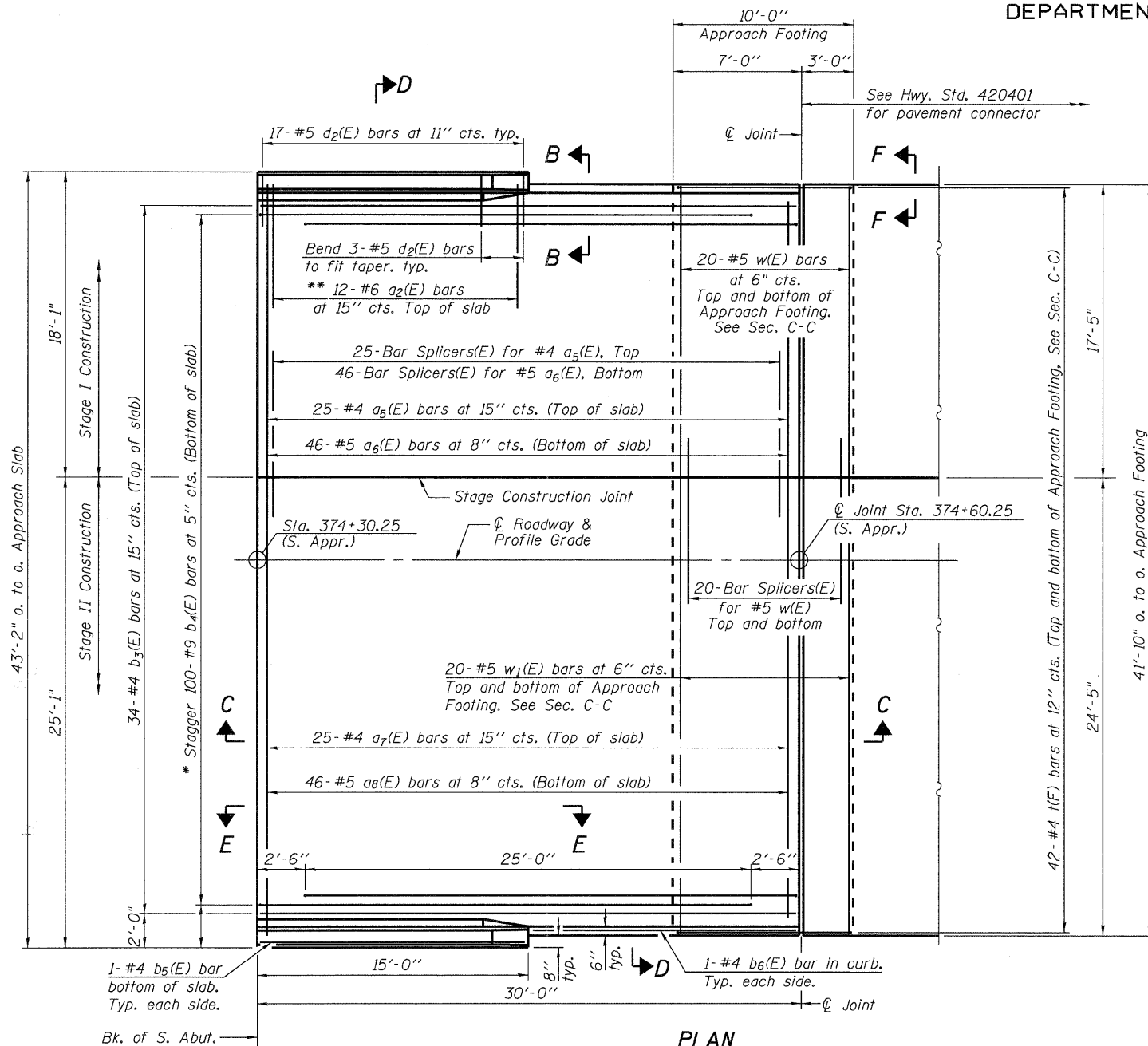


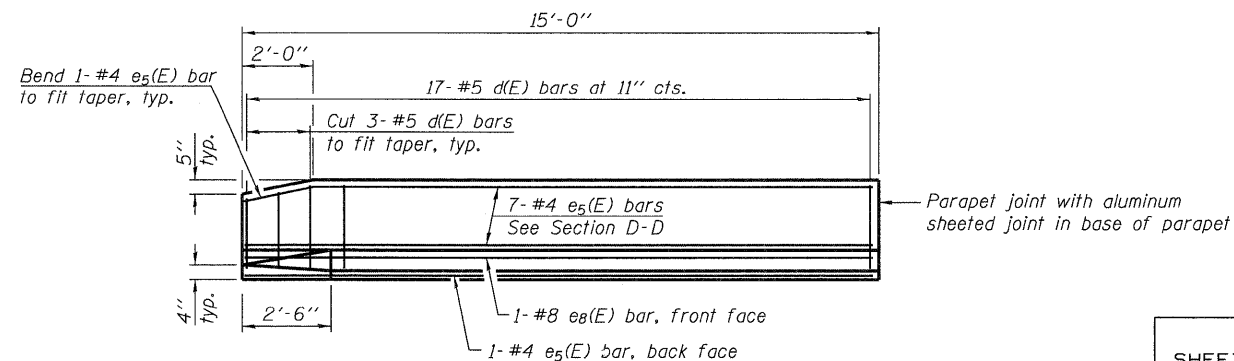
STATE OF ILLINOIS  
DEPARTMENT OF TRANSPORTATION

\*\*\* Cost included with Concrete Superstructure.

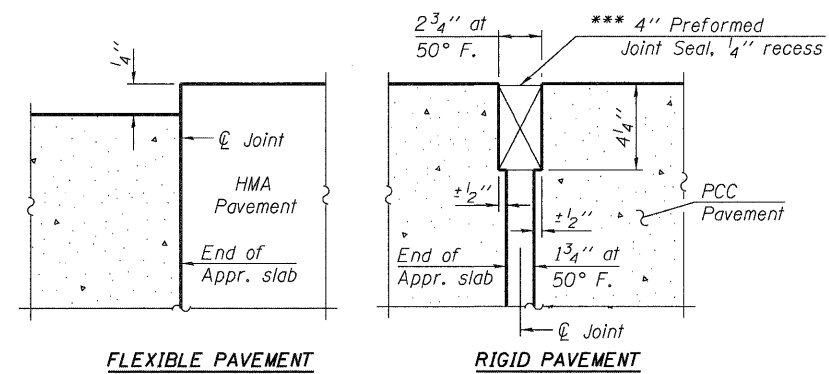


**PLAN**  
(South Approach Slab Shown.  
North Approach Slab Similar.)

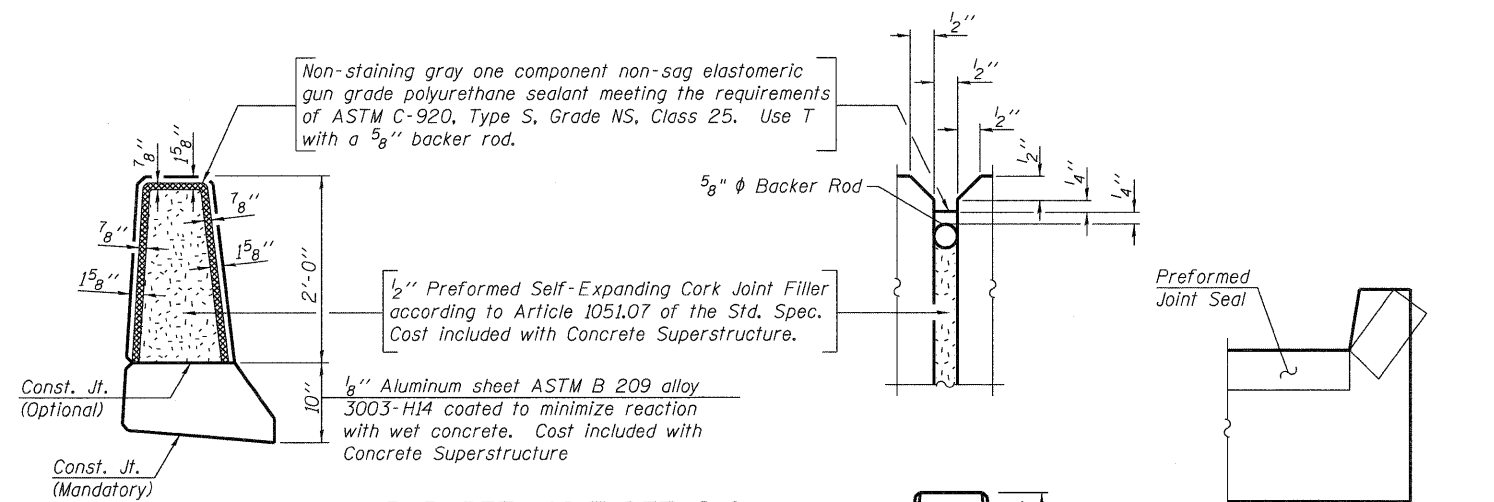
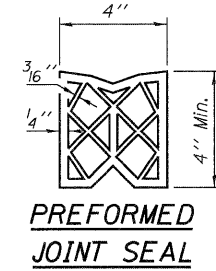
\* Tilt #9 b4(E) bars as required to maintain clearance.  
\*\* Alternate with a5(E) and a7(E) bars, typ. ea. parapet.



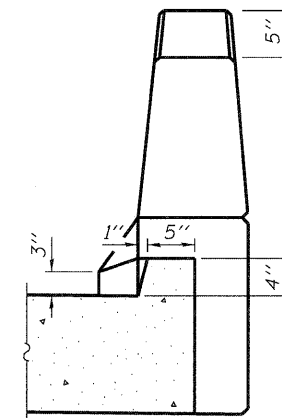
**VIEW E-E**



**DETAIL A**



**PARAPET JOINT DETAILS**



**VIEW B-B**

**VIEW F-F**  
Angle Preformed Joint Seal at 45° at curbs when req'd for drainage.

Notes:  
See Sheet 15 of 29 for Sections C-C and D-D.  
a5(E), a6(E), and w(E) bar spacings measured parallel to  $\phi$  Rdwy.  
Slipforming of parapets is not allowed.

**BRIDGE APPROACH SLAB DETAILS**  
**SN 028-0078**

DESIGNED	RLM
CHECKED	AMS
DRAWN	AEC
CHECKED	RLM



09/25/09

SHEET NO. 14 29 SHEETS	F.A.U. RTE. 9481	SECTION 12B1-1	COUNTY FRANKLIN	TOTAL SHEETS 304	SHEET NO. 140
	SN 028-0078		CONTRACT NO. 98823		
FED. ROAD DIST. NO. 7   ILLINOIS   FED. AID PROJECT					