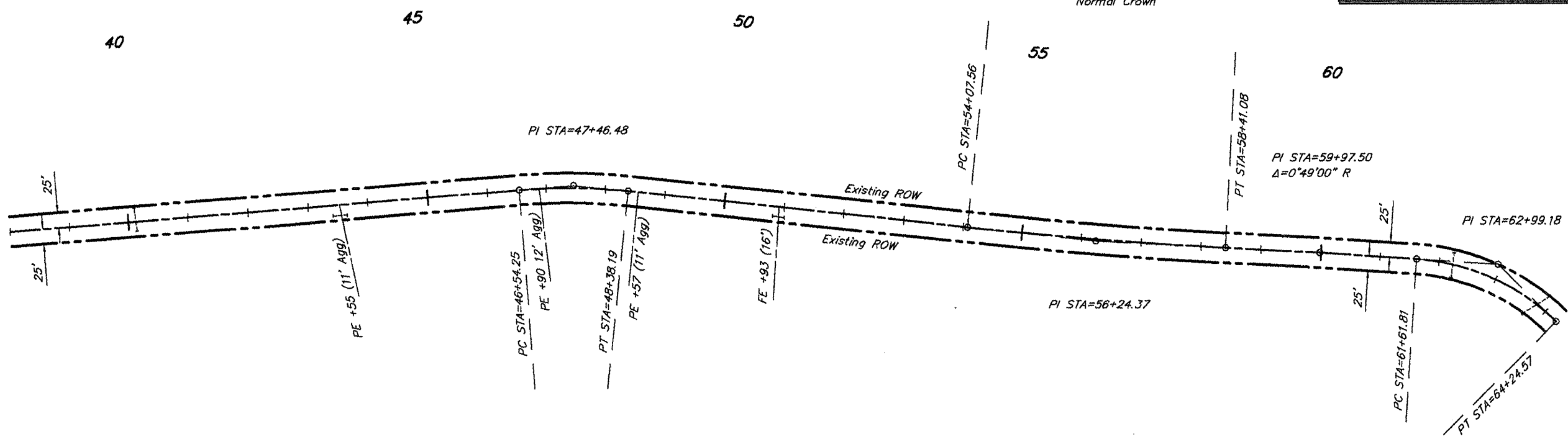


ROUTE	SECTION	COUNTY	TOTAL SHEETS	SHEET NO.
FAS 924	09-00062-00-RS	JOHNSON	10	6
PROJECT NO. ARA-RS-924 (124)			CONTRACT NO. 99372	

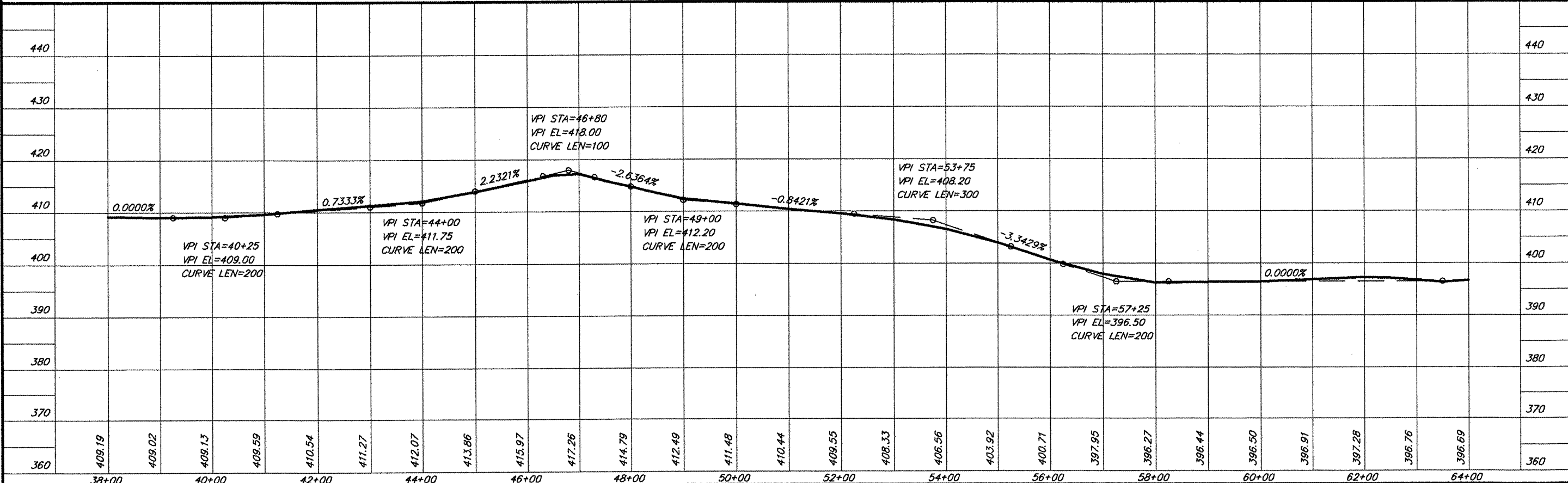
CURVE DATA
 $\Delta = 3^{\circ}04'27''$ $T = 216.82'$
 $D = 0^{\circ}42'33''$ $L = 433.53'$
 $R = 8080.00'$ $E = 2.91'$
 Normal Crown



CURVE DATA
 $\Delta = 10^{\circ}32'20''$ $T = 92.23'$
 $D = 5^{\circ}43'46''$ $L = 183.94'$
 $R = 1000.00'$ $E = 4.24'$
 $S.E. = 0.060'/ft.$
 Attain Sta. 45+60 to Sta. 46+89
 Remove Sta. 48+04 to Sta. 49+33

CURVE DATA
 $\Delta = 41^{\circ}14'49''$ $T = 137.37'$
 $D = 15^{\circ}41'51''$ $L = 262.76'$
 $R = 365.00'$ $E = 24.99'$
 $S.E. = 0.080'/ft.$
 Attain Sta. 60+52 to Sta. 62+05
 Remove Sta. 63+82 to Sta. 65+35

SCALES:
 1" = 200' HOR
 1" = 20' VER



PLAN & PROFILE STA. 38+00 - STA. 64+00

685 PPD3 12/07/09 15:25 RLM