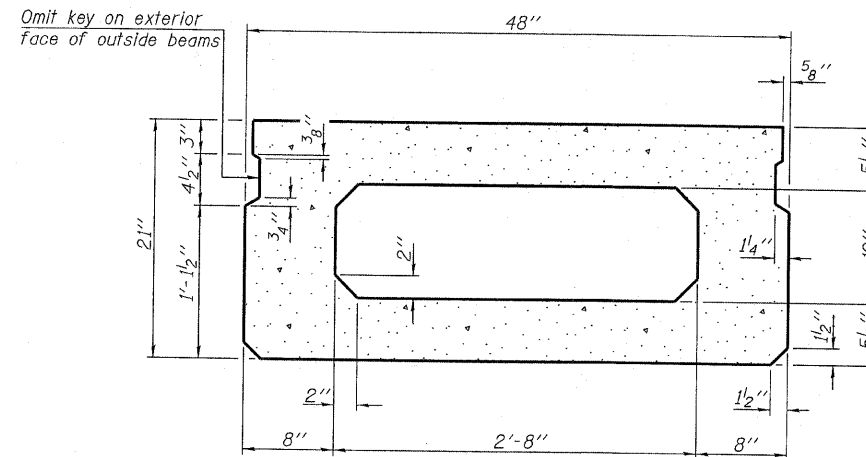
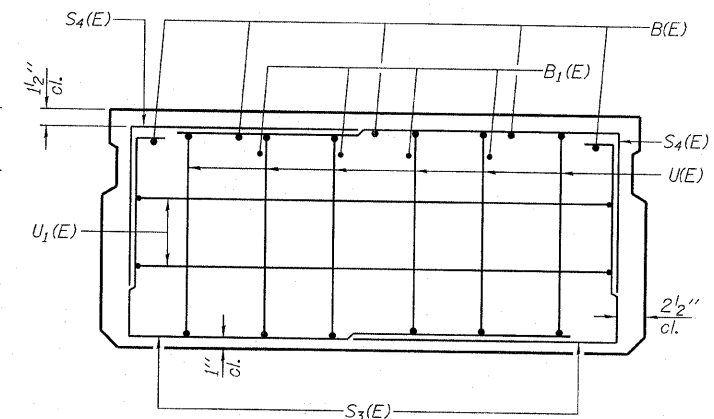


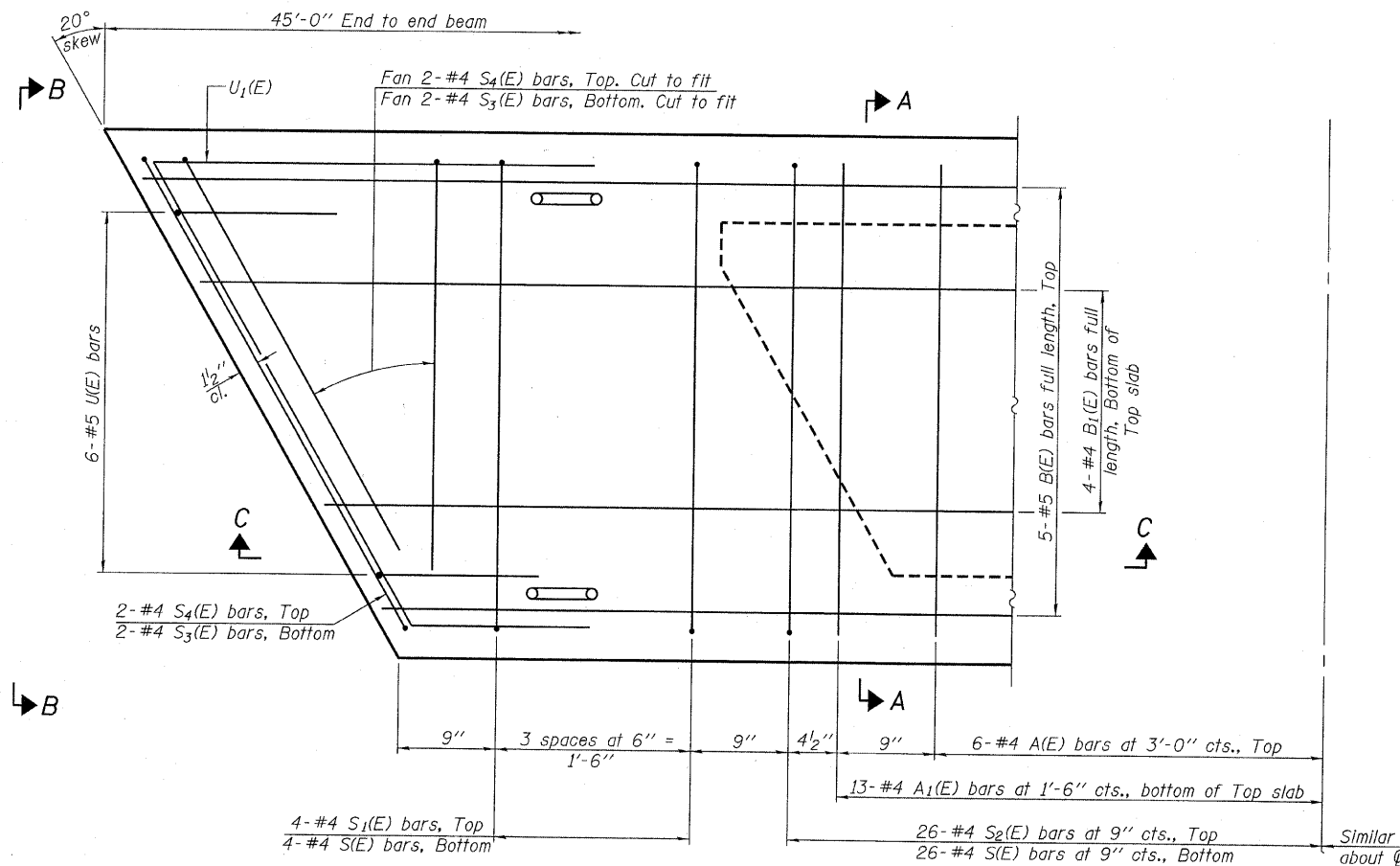
SECTION C-C



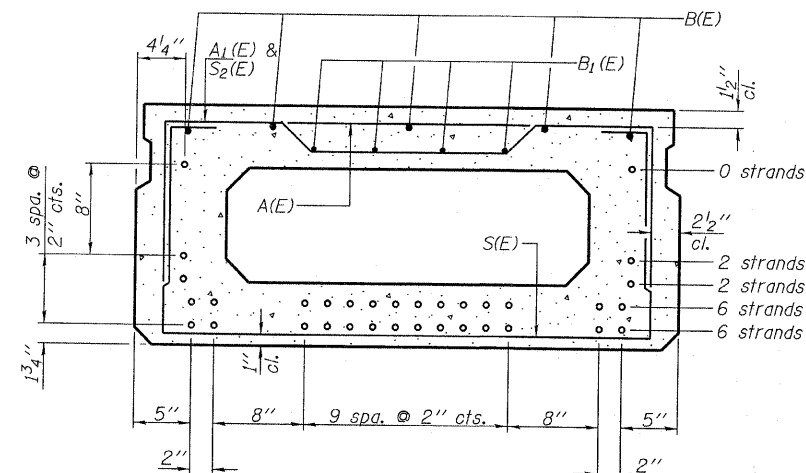
SECTION A-A  
(Showing dimensions)



VIEW B-B



PLAN VIEW



SECTION A-A

(Showing reinforcement and permissible strand locations)

Note: Place the number of strands specified in each row symmetrically about the centerline of beam in the permissible strand locations shown.

BAR LIST  
ONE BEAM ONLY  
(For information only)

Bar	No.	Size	Length	Shape
A(E)	12	#4	3'-7"	—
A1(E)	26	#4	3'-10"	—
B(E)	5	#5	44'-8"	—
B1(E)	4	#4	44'-8"	—
S(E)	60	#4	7'-5"	U
S1(E)	8	#4	5'-11"	U
S2(E)	52	#4	6'-2"	U
S3(E)	8	#4	4'-9"	U
S4(E)	8	#4	4'-0"	U
U(E)	12	#5	4'-0"	U
U1(E)	4	#4	7'-6"	U

Note: See sheet 3 & 4 of 8 for additional details and Bill of Material.

Note: Spacing of S(E) and S2(E) bars may be adjusted up to 4" in the immediate area of the transverse tie diaphragms to miss the block outs for the transverse ties.

DESIGNED - V.J.H.
CHECKED - S.W.M.
DRAWN - D.T.M.
CHECKED - D.A.B.

PD-2148-R

10-1-08

**HAMPTON, LENZINI AND RENWICK, INC.**  
 CIVIL ENGINEERS - STRUCTURAL ENGINEERS - LAND SURVEYORS  
**HLR** 3085 STEVENSON DRIVE, SUITE 201  
 SPRINGFIELD, ILLINOIS 62703  
 217.546.3400 www.hlrengineering.com  
 184.000959  
 ILLINOIS PROFESSIONAL DESIGN FIRM LS / PE / SE CORPORATION  
 PROJECT NUMBER: 09.0070.130 DATE: 12/17/09

SHEET NO. 2  
8 SHEETS

T.R.	SECTION	COUNTY	TOTAL SHEETS	SHEET NO.
52	06-04126-00-BR	HAMILTON	11	5
DAHLGREN ROAD DISTRICT		CONTRACT NO. 99416		
FED. ROAD DIST. NO.		ILLINOIS FED. AID PROJECT: BROS-065(048)		

**SUPERSTRUCTURE**  
**21" X 48" PPC DECK BEAM**  
**STRUCTURE NO. 033-3302**