

STATE OF ILLINOIS  
DEPARTMENT OF TRANSPORTATION

F.A.P. RTE.	SECTION	COUNTY	TOTAL SHEETS	SHEET NO.
345	2017-044TS&GRR	*	17	1
		ILLINOIS	CONTRACT NO. 62F72	
* COOK, DUPAGE, KANE				

D-91-030-18

FOR INDEX OF SHEETS, SEE SHEET NO. 2

PROJECT LOCATED IN:  
CITY OF ELGIN  
VILLAGE OF BARTLETT  
VILLAGE OF HANOVER PARK  
VILLAGE OF PINGREE GROVE  
VILLAGE OF STREAMWOOD

TRAFFIC DATA:

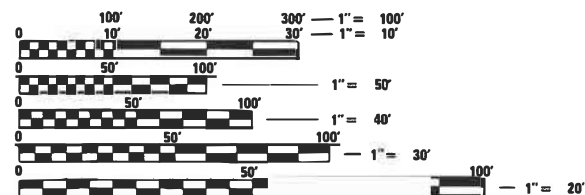
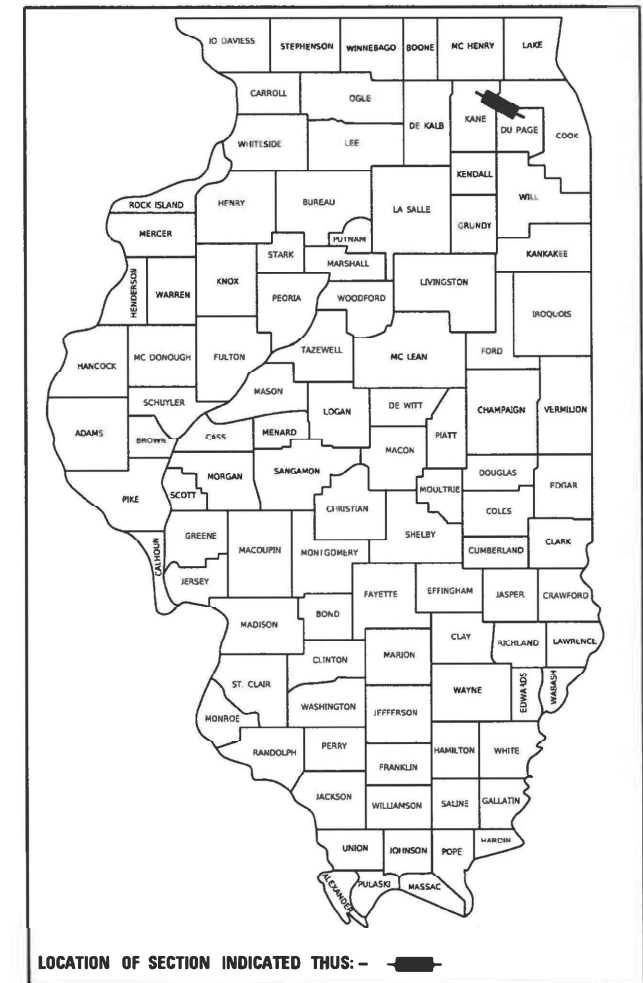
US 20:  
ADT = 8850 - 51,100 (2019)  
SPEED LIMIT = 30 MPH - 55 MPH

PROPOSED  
HIGHWAY PLANS

F.A.P. ROUTE 345 (U.S. 20)  
IL ROUTE 47 TO ONTARIOVILLE RD.  
SECTION: 2017-044TS&GRR  
PROJECT: HSIP-MYR1(616)  
GUARDRAIL, GUARDRAIL END-SECTION REPLACEMENT,  
TRAFFIC SIGNAL MODERNIZATION  
VARIOUS COUNTIES

C-91-040-18

FOR GENERAL LOCATION MAPS, SEE SHEET NO. 4



FULL SIZE PLANS HAVE BEEN PREPARED USING STANDARD ENGINEERING SCALES. REDUCED SIZED PLANS WILL NOT CONFORM TO STANDARD SCALES. IN MAKING MEASUREMENTS ON REDUCED PLANS, THE ABOVE SCALES MAY BE USED.

J.U.L.I.E.  
JOINT UTILITY LOCATION INFORMATION FOR EXCAVATORS  
1-800-892-0123  
OR 811

PROJECT ENGINEER: DAN WILGREEN (847) 705-4240  
PROJECT MANAGER: FAWAD AQUEEL (847) 705-4247

CONTRACT NO. 62F72

STATE OF ILLINOIS  
DEPARTMENT OF TRANSPORTATION

SUBMITTED MARCH 11, 2021  
Jose Rios (JAB)  
REGIONAL ENGINEER

May 7, 2021  
Scott A. Elk  
ENGINEER OF DESIGN AND ENVIRONMENT

May 7, 2021  
James J. [Signature]  
DIRECTOR OF HIGHWAYS PROJECT IMPLEMENTATION 13

PRINTED BY THE AUTHORITY  
OF THE STATE OF ILLINOIS

**INDEX OF SHEETS**

SHEET NO.	DESCRIPTION
1	COVER SHEET
2	INDEX OF SHEETS, STATE STANDARDS, AND GENERAL NOTES
3	SUMMARY OF QUANTITIES
4	LOCATION MAP
5	TRAFFIC BACKPLATE REPLACEMENT SCHEDULE
6	GUARDRAIL END-SECTION REPLACEMENT AND PROPOSED GUARDRAIL SCHEDULE
7	PROPOSED GUARDRAIL DETAIL - EB US 20 WEST OF RANDALL RD.
8	DETAILS FOR DEPRESSED CURB & GUTTER AND SHOULDER TREATMENT AT TBT TY 1 SPL. (BD-34)
9-12	REMOVE AND REERECT STEEL PLATE BEAM GUARDRAIL (BM-21)
13	TRAFFIC CONTROL AND PROTECTION FOR SIDE ROADS, INTERSECTIONS, AND DRIVEWAYS (TC-10)
14	TRAFFIC CONTROL AND PROTECTION AT TURN BAYS (TO REMAIN OPEN TO TRAFFIC) (TC-14)
15-17	CROSS SECTIONS

**STATE STANDARDS**

STANDARD NO.	DESCRIPTION
000001-08	TYPICAL SYMBOLS, ABBREVIATIONS AND PATTERNS
630001-12	STEEL PLATE BEAM GUARDRAIL
630301-09	SHOULDER WIDENING FOR TYPE 1 (SPECIAL) GUARDRAIL TERMINALS
631011-10	TRAFFIC BARRIER TERMINAL, TYPE 2
635001-02	DELINEATORS
701001-02	OFF-RD OPERATIONS, 2L, 2W, MORE THAN 15' (4.5 M) AWAY
701006-05	OFF-RD OPERATIONS, 2L, 2W, 15' (4.5 M) TO 24" (600 MM) FROM PAVEMENT EDGE
701101-05	OFF-RD OPERATIONS, MULTILANE, 15' (4.5 m) TO 24" (600 mm) FROM PAVEMENT EDGE
701106-02	OFF-RD OPERATIONS, MULTILANE, MORE THAN 15' (4.5 m) AWAY
701201-05	LANE CLOSURE, 2L, 2W, DAY ONLY, FOR SPEEDS >= 45 MPH
701301-04	LANE CLOSURE, 2L, 2W, SHORT TIME OPERATIONS
701411-09	LANE CLOSURE, MULTILANE, AT ENTRANCE OR EXIT RAMP, FOR SPEEDS >= 45 MPH
701421-08	LANE CLOSURE, MULTILANE, DAY OPERATIONS ONLY, FOR SPEEDS >= 45 MPH TO 55 MPH
701502-09	URBAN LANE CLOSURE, 2L, 2W, WITH BIDIRECTIONAL LEFT TURN LANE
701701-10	URBAN LANE CLOSURE, MULTILANE INTERSECTION
701901-08	TRAFFIC CONTROL DEVICES
725001-01	OBJECT AND TERMINAL MARKERS
782006-01	GUARDRAIL AND BARRIER WALL REFLECTOR MOUNTING DETAILS

**GENERAL NOTES**

- BEFORE STARTING ANY EXCAVATION, THE CONTRACTOR SHALL CALL "JULIE" AT (800) 892-0123 OR 811 FOR FIELD LOCATIONS OF BURIED ELECTRIC, TELEPHONE, AND GAS FACILITIES. (48 HOUR NOTIFICATION REQUIRED)
- THE CONTRACTOR SHALL COORDINATE CONSTRUCTION ACTIVITIES WITH UTILITY COMPANIES AND THE CITY OF ELGIN, VILLAGES OF BARTLETT, HANOVER PARK, PINGREE GROVE AND STREAMWOOD.
- THE CONTRACTOR WILL NOT BE ALLOWED TO SET UP A YARD OR FIELD OFFICE ON STATE PROPERTY WITHOUT THE WRITTEN PERMISSION OF THE DEPARTMENT.
- IT SHALL BE THE CONTRACTOR'S RESPONSIBILITY TO VERIFY ALL DIMENSIONS AND CONDITIONS EXISTING IN THE FIELD PRIOR TO CONSTRUCTION AND ORDERING OF MATERIALS.
- ALL DAMAGE TO EXISTING PAVEMENT MARKINGS OR RAISED REFLECTIVE PAVEMENT MARKERS OUTSIDE THE REMOVAL LINE SHOWN ON THE PLANS SHALL BE REPLACED AT THE CONTRACTOR'S EXPENSE.
- THE CONTRACTOR SHALL BE REQUIRED TO PROVIDE ACCESS TO ABUTTING PROPERTY AT ALL TIMES DURING THE CONSTRUCTION OF THIS PROJECT.
- DO NOT SCALE PLANS FOR CONSTRUCTION DIMENSIONS.
- THE CONTRACTOR SHALL CONTACT THE DISTRICT ONE TRAFFIC CONTROL SUPERVISOR AT KALPANA.KANNAN-HOSADURGA@ILLINOIS.GOV A MINIMUM OF 72 HOURS IN ADVANCE OF BEGINNING WORK.
- THE CONTRACTOR SHALL VERIFY THE EXISTING TYPE/HEIGHT OF EXISTING GUARDRAIL BEFORE ORDERING THE NEW TERMINAL SECTION. THE TERMINAL SECTION SHALL MATCH THE HEIGHT OF EXISTING GUARDRAIL.
- REMOVED GUARDRAIL MUST BE REPLACED ON THE SAME DAY UNLESS AUTHORIZED BY THE RESIDENT ENGINEER. NO LOCATIONS WILL BE LEFT WITHOUT EITHER LIGHTED BARRICADES OR RESTORED GUARDRAIL AT ANY TIME.
- THE CONTRACTOR SHALL ONLY PERFORM WORK ON ONE SIDE OF THE ROADWAY AT ANY TIME.
- NO MATERIAL SHALL BE LEFT ON OR NEAR THE ROADWAY DURING NON-WORKING HOURS IN ACCORDANCE WITH ART. 701.11.
- THE CONTRACTOR MAY CONTACT THE AREA PERMIT ENGINEER, JONATHAN KARABOWICZ AT JONATHAN.KARABOWICZ@ILLINOIS.GOV FOR THE PERMIT AT US 20 AND BARTLETT RD.

MODEL: Default  
 FILE NAME: p:\data\mroom.dwt\illinois.gov\PWIDOT\Documents\DOT\_Offices\District 1\Projects\103018\CaddData\Design\103018-sh-h-generat.dgn

USER NAME = Billgramisa	DESIGNED -	REVISED -
	DRAWN -	REVISED -
PLOT SCALE = 100,0000 ' / in.	CHECKED -	REVISED -
PLOT DATE = 3/12/2021	DATE -	REVISED -

**STATE OF ILLINOIS**  
**DEPARTMENT OF TRANSPORTATION**

**INDEX OF SHEETS, STATE STANDARDS, AND GENERAL NOTES**  
**US 20 (IL 47 TO ONTARIOVILLE)**

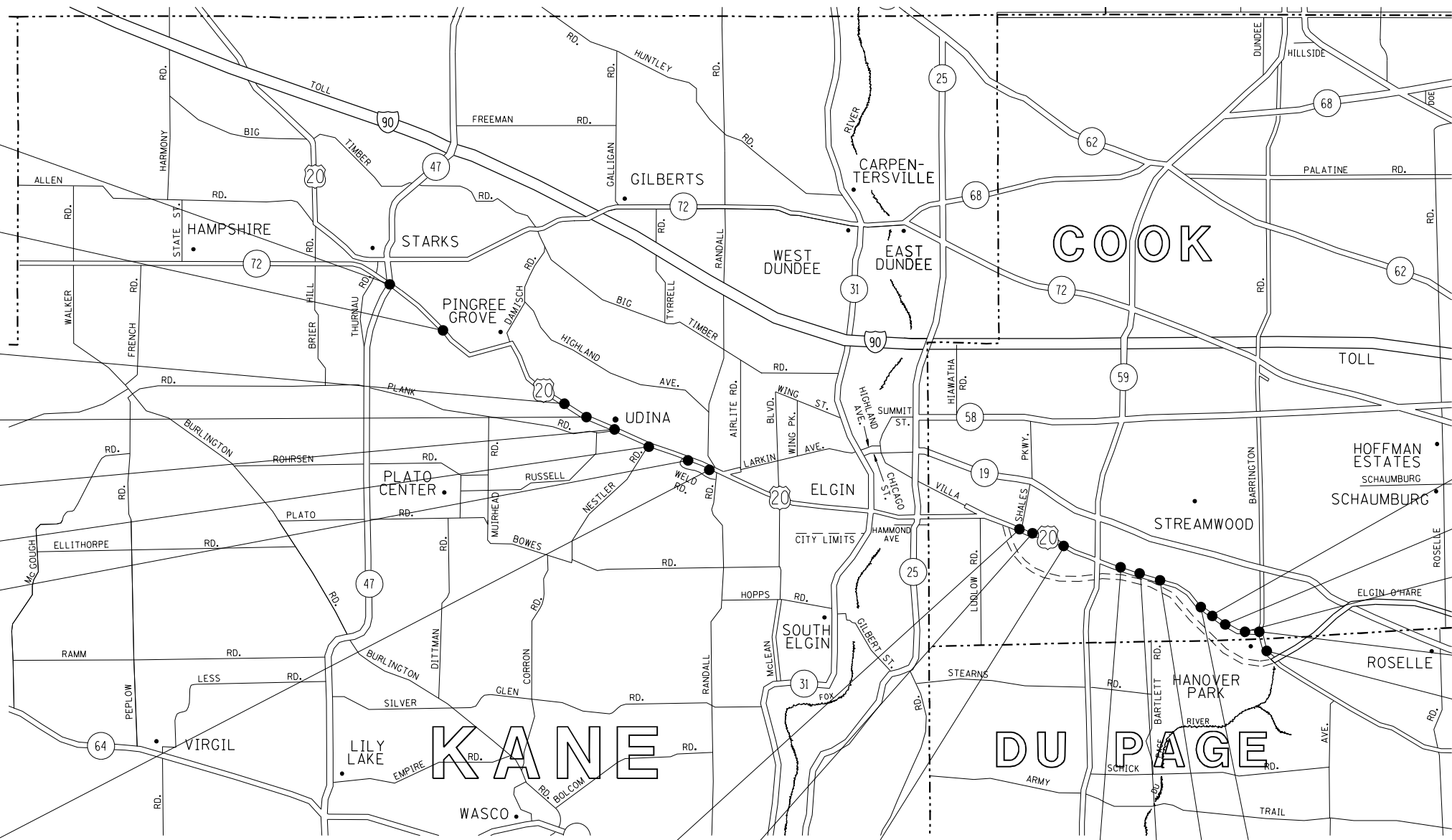
SCALE: SHEET 1 OF 1 SHEETS STA. TO STA.

F.A.P. RTE.	SECTION	COUNTY	TOTAL SHEETS	SHEET NO.
345	2017-044TS&GR	*	17	2
* COOK, DUPAGE, KANE		CONTRACT NO. 62F72		
ILLINOIS FED. AID PROJECT				

SUMMARY OF QUANTITIES			TOTAL QUANTITIES URBAN	CONSTRUCTION TYPE CODE					
CODE NO	ITEM	UNIT		90% FED 10% STATE 0021 COOK COUNTY	90% FED 10% STATE 0021 DUPAGE COUNTY	90% FED 10% STATE 0021 KANE COUNTY			
48101200	AGGREGATE SHOULDERS, TYPE B	TON	12			12			
63000001	STEEL PLATE BEAM GUARDRAIL, TYPE A, 6 FOOT POSTS	FOOT	187.5			187.5			
63100045	TRAFFIC BARRIER TERMINAL, TYPE 2	EACH	1			1			
63100167	TRAFFIC BARRIER TERMINAL, TYPE 1 (SPECIAL) TANGENT	EACH	5			5			
63200310	GUARDRAIL REMOVAL	FOOT	200			200			
67000400	ENGINEER'S FIELD OFFICE, TYPE A	CAL MO	6	2	2	2			
67100100	MOBILIZATION	L SUM	1	0.4	0.2	0.4			
70100310	TRAFFIC CONTROL AND PROTECTION, STANDARD 701421	L SUM	1			1			
70100420	TRAFFIC CONTROL AND PROTECTION, STANDARD 701411	EACH	1			1			
70100450	TRAFFIC CONTROL AND PROTECTION, STANDARD 701201	L SUM	1			1			
70102622	TRAFFIC CONTROL AND PROTECTION, STANDARD 701502	L SUM	1			1			
70102635	TRAFFIC CONTROL AND PROTECTION, STANDARD 701701	L SUM	1	0.4	0.2	0.4			

SUMMARY OF QUANTITIES			TOTAL QUANTITIES URBAN	CONSTRUCTION TYPE CODE					
CODE NO	ITEM	UNIT		90% FED 10% STATE 0021 COOK COUNTY	90% FED 10% STATE 0021 DUPAGE COUNTY	90% FED 10% STATE 0021 KANE COUNTY			
72501000	TERMINAL MARKER - DIRECT APPLIED	EACH	5			5			
78200005	GUARDRAIL REFLECTORS, TYPE A	EACH	6			6			
78200006	GUARDRAIL REFLECTORS, TYPE B	EACH	8			8			
* 85000200	MAINTENANCE OF EXISTING TRAFFIC SIGNAL INSTALLATION	EACH	15	11	1	3			
* 88200510	TRAFFIC SIGNAL BACKPLATE, RETROREFLECTIVE	EACH	124	89	13	22			
* 89502375	REMOVE EXISTING TRAFFIC SIGNAL EQUIPMENT	EACH	15	11	1	3			
	* SPECIALTY ITEM								

REV-SEP



TRAFFIC SIGNAL BACKPLATE  
US 20 (PINGREE GROVE)  
• AT IL 47 / IL 72 SOUTH

GUARDRAIL END-SECTION REPLACEMENT  
US 20 (PINGREE GROVE)  
• WB, LT, EAST OF BELL RD.;  
1 MILE E/O IL 47

GUARDRAIL END-SECTION REPLACEMENT  
US 20 (ELGIN)  
• WB, LT, EAST OF HIGHLAND WOODS BLVD.;  
1 MILE W/O PLANK RD.

GUARDRAIL END-SECTION REPLACEMENT  
US 20 (ELGIN)  
• (X) WB, LT, EAST OF HIGHLAND WOODS BLVD.;  
0.7 MILE W/O PLANK RD.

TRAFFIC SIGNAL BACKPLATE  
US 20 (ELGIN)  
• AT PLANK RD.

TRAFFIC SIGNAL BACKPLATE  
US 20 (ELGIN)  
• AT NESLER RD.

GUARDRAIL END-SECTION REPLACEMENT  
US 20 (ELGIN)  
• EB, RT, EAST OF LONGCOMMON PKWY;  
0.7 MILE W/O RANDALL RD.

PROP. GUARDRAIL AT OVERHEAD SIGN STRUCTURE  
US 20 (ELGIN)  
• EB, RT, 0.17 MILE W/O RANDALL RD.

TRAFFIC SIGNAL BACKPLATE  
US 20 (ELGIN)  
• AT BLUFF CITY BLVD.

TRAFFIC SIGNAL BACKPLATE  
US 20 (ELGIN)  
• AT LAMBERT LN.

TRAFFIC SIGNAL BACKPLATE  
US 20 (BARTLETT)  
• AT NAPERVILLE RD.

TRAFFIC SIGNAL BACKPLATE  
US 20 (BARTLETT)  
• AT BARTLETT RD.

TRAFFIC SIGNAL BACKPLATE  
US 20 (STREAMWOOD)  
• AT NORTH AVE.

TRAFFIC SIGNAL BACKPLATE  
US 20 (BARTLETT)  
• AT PARK AVE.

TRAFFIC SIGNAL BACKPLATE  
US 20 (BARTLETT)  
• AT OAK AVE.

TRAFFIC SIGNAL BACKPLATE  
US 20 (STREAMWOOD)  
• AT WALNUT AVE.

TRAFFIC SIGNAL BACKPLATE  
US 20 (HANOVER PARK)  
• AT CENTER AVE.

TRAFFIC SIGNAL BACKPLATE  
US 20 (HANOVER PARK)  
• AT CHURCH ST.

TRAFFIC SIGNAL BACKPLATE  
US 20 (HANOVER PARK)  
• AT COUNTY FARM RD.

TRAFFIC SIGNAL BACKPLATE  
US 20 (HANOVER PARK)  
• AT ONTARIOVILLE RD.

MODEL: Default  
 FILE NAME: p:\planning\room\dot\illinois\dot\pww\DOT\Documents\DOT - Office\Drawings - 1\Projects\103018\CaddData\Design\103018-sh-dtbls.com

USER NAME =	billgramisa	DESIGNED -		REVISED -	
DRAWN -		REVISOR -		REVISED -	
PLOT SCALE =	100,0000' / in.	CHECKED -		REVISED -	
PLOT DATE =	3/12/2021	DATE -		REVISED -	

**STATE OF ILLINOIS  
DEPARTMENT OF TRANSPORTATION**

<b>LOCATION MAP</b>			
<b>US 20 (IL 47 TO ONTARIOVILLE RD.)</b>			
SCALE:	SHEET	OF SHEETS	STA. TO STA.

F.A.P. RTE.	SECTION	COUNTY	TOTAL SHEETS	SHEET NO.
345	2017-044TS&GRR	* COOK, DUPAGE, KANE	17	4
ILLINOIS FED. AID PROJECT			CONTRACT NO. 62F72	

**TRAFFIC SIGNAL BACKPLATE REPLACEMENT SCHEDULE OF QUANTITIES**

ITEM	ITEM DESCRIPTION	TOTAL	IL 47 - 72 SOUTH TS 776	PLANK RD. TS 693	NESLER RD. TS 677	BLUFF CITY BLYD. TS 1320	LAMBERT RD. TS 503	NAPERVILLE RD. TS 502	BARTLETT RD. TS 11270	OAK AVE. TS 1325	PARK AVE. TS 1330	NORTH AVE. TS 6077	WALNUT AVE. TS 20575	CENTER AVE. TS 13762	CHURCH ST. TS 6025	COUNTY FARM TS 13765	ONTARIOVILLE RD. TS 7695
85000200	MAINTENANCE OF EXISTING TRAFFIC SIGNAL INSTALLATION	15	1	1	1	1	1	1	1	1	1	1	1	1	1	1	1
88200510	TRAFFIC SIGNAL BACKPLATE, RETROREFLECTIVE	124	8	8	6	16	8	8	4	2	4	7	8	8	10	14	13
89502375	REMOVE EXISTING TRAFFIC SIGNAL EQUIPMENT	15	1	1	1	1	1	1	1	1	1	1	1	1	1	1	1

**NOTE:**

REMOVAL OF EXISTING TRAFFIC SIGNAL BACKPLATES IS INCLUDED UNDER THE REMOVE EXISTING TRAFFIC SIGNAL EQUIPMENT ITEM

**REMOVAL AND RELOCATION NOTES:**

THE FOLLOWING ITEMS SHALL BE REMOVED BY THE CONTRACTOR AND SHALL BE DISPOSED OF BY THEM OUTSIDE THE RIGHT-OF-WAY AT THEIR EXPENSE. THE SALVAGE VALUE OF THE REMOVED EQUIPMENT SHALL BE REFLECTED IN THE CONTRACT BID PRICE.

124 EACH TRAFFIC SIGNAL BACKPLATE

USER NAME = vargasa	DESIGNED - AV	REVISED -	<b>STATE OF ILLINOIS DEPARTMENT OF TRANSPORTATION</b>	<b>TRAFFIC BACKPLATE REPLACEMENT SCHEDULE OF QUANTITIES US RTE 20 (FROM IL 47 TO ONTARIOVILLE ROAD)</b>	F.A.P. RTE. 345	SECTION 2017-044TS&GRR	COUNTY VARIOUS	TOTAL SHEETS 17	SHEET NO. 5		
PLOT SCALE = 40,0000' / 1".	CHECKED - LP	REVISED -			SCALE: NONE	SHEET 1	OF 1	SHEETS	STA.	TO STA.	ILLINOIS FED. AID PROJECT
PLOT DATE = 1/11/2021	DATE - 1/11/2021	REVISED -									

PROPOSED GUARDRAIL END-SECTION REPLACEMENTS SCHEDULE

PAY ITEM	ITEM DESCRIPTION	TOTAL	UNIT	GUARDRAIL END-SECTION REPLACEMENT LOCATIONS			
				US 20 WB; EAST OF BELL RD; 1 MILE WEST OF IL 47	US 20 WB; EAST OF HIGHLAND WOODS BLVD; 1 MILE WEST OF PLANK RD	US 20 WB, EAST OF HIGHLAND WOODS BLVD; 0.7 MILE WEST OF PLANK RD	US 20 EB; EAST OF LONGCOMMON PKWY; 0.7 MILE WEST OF RANDALL RD
48101200	AGGREGATE SHOULDER, TYPE B	9.6	TON	2.4	2.4	2.4	2.4
63200310	GUARDRAIL REMOVAL	200	FOOT	50	50	50	50
63100167	TRAFFIC BARRIER TERMINAL, TYPE 1 (SPECIAL) TANGENT	4	EACH	1	1	1	1
72501000	TERMINAL MARKER - DIRECT APPLIED	4	EACH	1	1	1	1
78200006	GUARDRAIL REFLECTORS, TYPE B	8	EACH	2	2	2	2

PROPOSED GUARDRAIL SCHEDULE

PROPOSED GUARDRAIL AT OVERHEAD SIGN STRUCTURE US 20 EB; 0.17 MILE WEST OF RANDALL RD.			
PAY ITEM	ITEM DESCRIPTION	TOTAL	UNIT
48101200	AGGREGATE SHOULDER, TYPE B	2.4	TON
63000001	STEEL PLATE BEAM GUARDRAIL, TYPE A, 6 FT POSTS	187.5	FOOT
63100045	TRAFFIC BARRIER TERMINAL, TYPE 2	1	EACH
63100167	TRAFFIC BARRIER TERMINAL, TYPE 1 (SPECIAL) TANGENT	1	EACH
72501000	TERMINAL MARKER - DIRECT APPLIED	1	EACH
78200005	GUARDRAIL REFLECTORS, TYPE A	6	EACH

MODEL: Default  
FILE NAME: p:\u0030\18\03018\CaddData\Design\03018-218-shr-schedule.dgn  
PROJECT: I:\Projects\18\03018\CaddData\Design\03018-218-shr-schedule.dgn

USER NAME = bilgramisa	DESIGNED -	REVISED -
	DRAWN -	REVISED -
PLOT SCALE = 100,0000' / in.	CHECKED -	REVISED -
PLOT DATE = 3/12/2021	DATE -	REVISED -

STATE OF ILLINOIS  
DEPARTMENT OF TRANSPORTATION

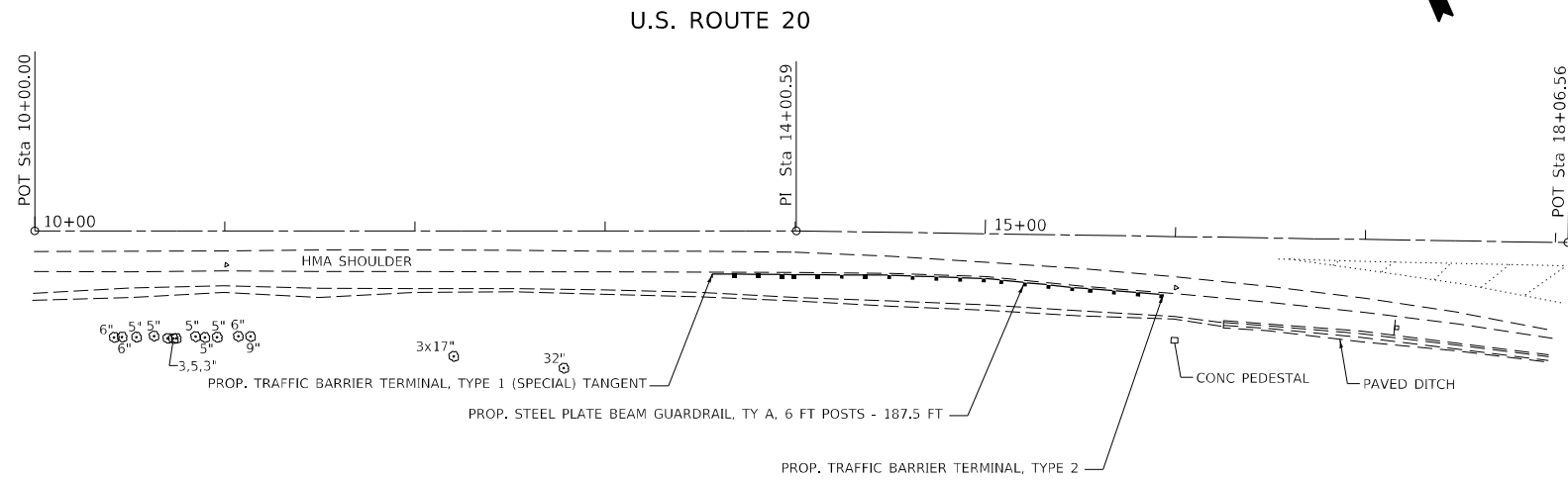
GUARDRAIL END-SECTION REPLACEMENTS & PROP. GUARDRAIL SCHEDULE			
US 20 (IL 47 TO ONTARIOVILLE RD.)			
SCALE:	SHEET	OF	SHEETS
	STA.		TO STA.

F.A.P. RTE.	SECTION	COUNTY	TOTAL SHEETS	SHEET NO.
345	2017-044TS&GRR	*	17	6
* COOK, DUPAGE, KANE		CONTRACT NO. 62F72		
ILLINOIS FED. AID PROJECT				

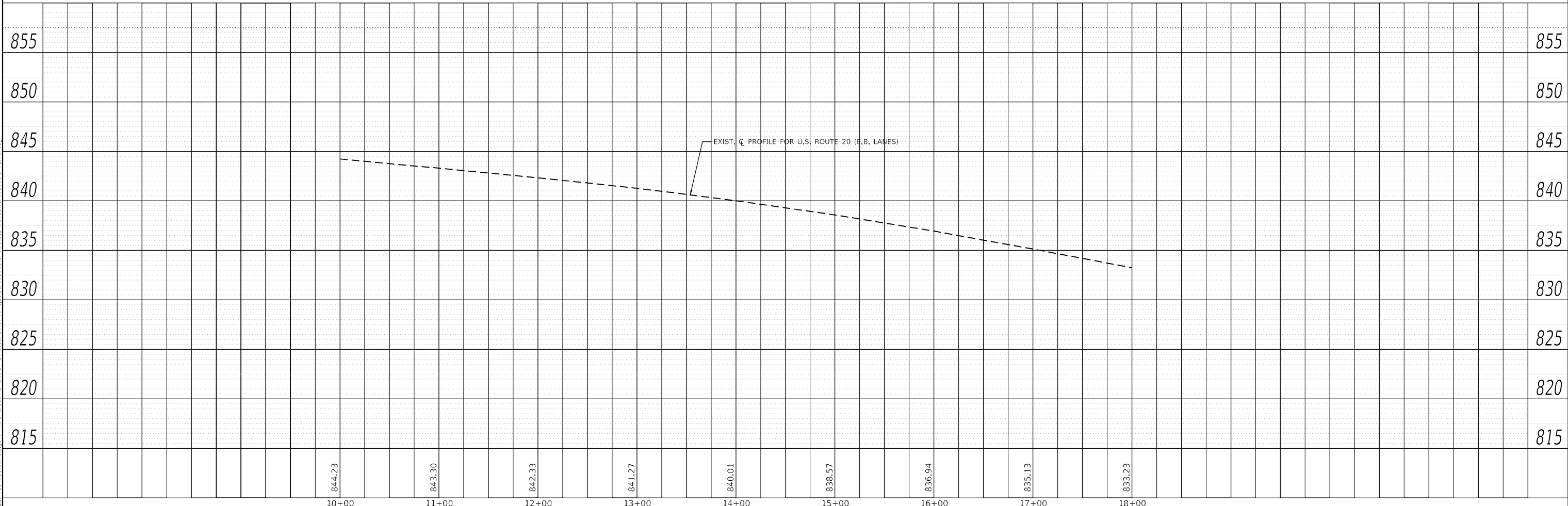
PLAN	SURVEYED	DATE
	PLOTTED	
	ALIGNED	
	CHECKED	
	BY	
	NO.	
	FILE NAME	

PROFILE	SURVEYED	DATE
	PLOTTED	
	GRADES	
	CHECKED	
	STRUCTURE	
	NOTATION	
	BY	
	NO.	
	FILE NAME	

MODEL: Default  
 FILE NAME: p:\illinois\p17\DOT\Documents\DOT Offices\District 1\Projects\10301\EB US 20\EB US 20\EB US 20\EB US 20.dgn



PROP. STEEL PLATE BEAM GUARDRAIL  
 STA. 13+93.9 TO STA 15+81.6  
 18.4' WEST OF SIGN STRUCTURE

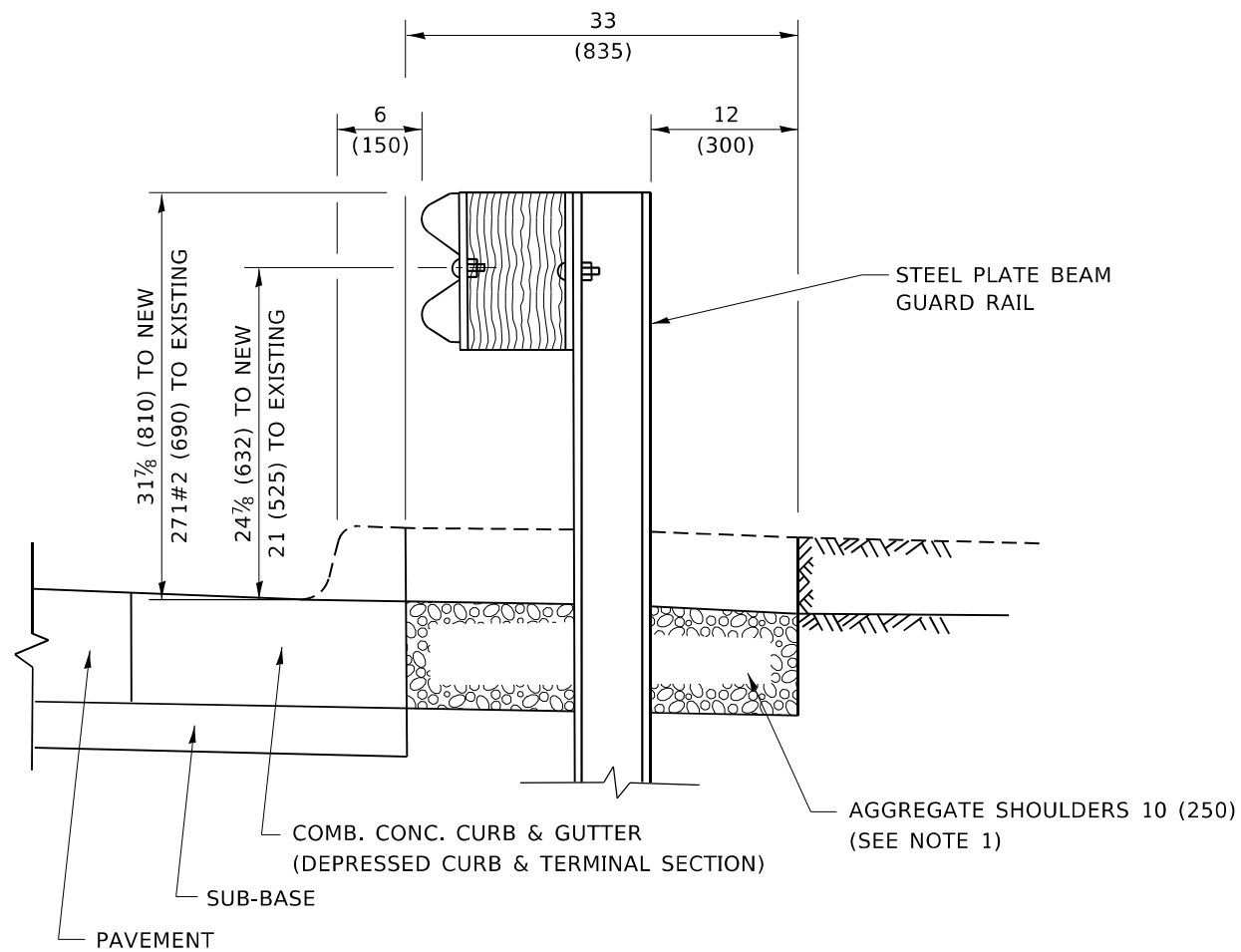


USER NAME =	billgramisa	DESIGNED -	REVISED -
		DRAWN -	REVISED -
PLOT SCALE =	100,0000' / in.	CHECKED -	REVISED -
PLOT DATE =	3/12/2021	DATE -	REVISED -

**STATE OF ILLINOIS  
 DEPARTMENT OF TRANSPORTATION**

<b>PROPOSED GUARDRAIL EB US 20 W/O RANDALL RD.</b>			
SCALE: 1"=50'	SHEET	OF	SHEETS
	STA.		TO STA.

F.A.P. RTE.	SECTION	COUNTY	TOTAL SHEETS	SHEET NO.
345	2017-044TS&GR	KANE	17	7
CONTRACT NO. 62F72				
ILLINOIS FED. AID PROJECT				

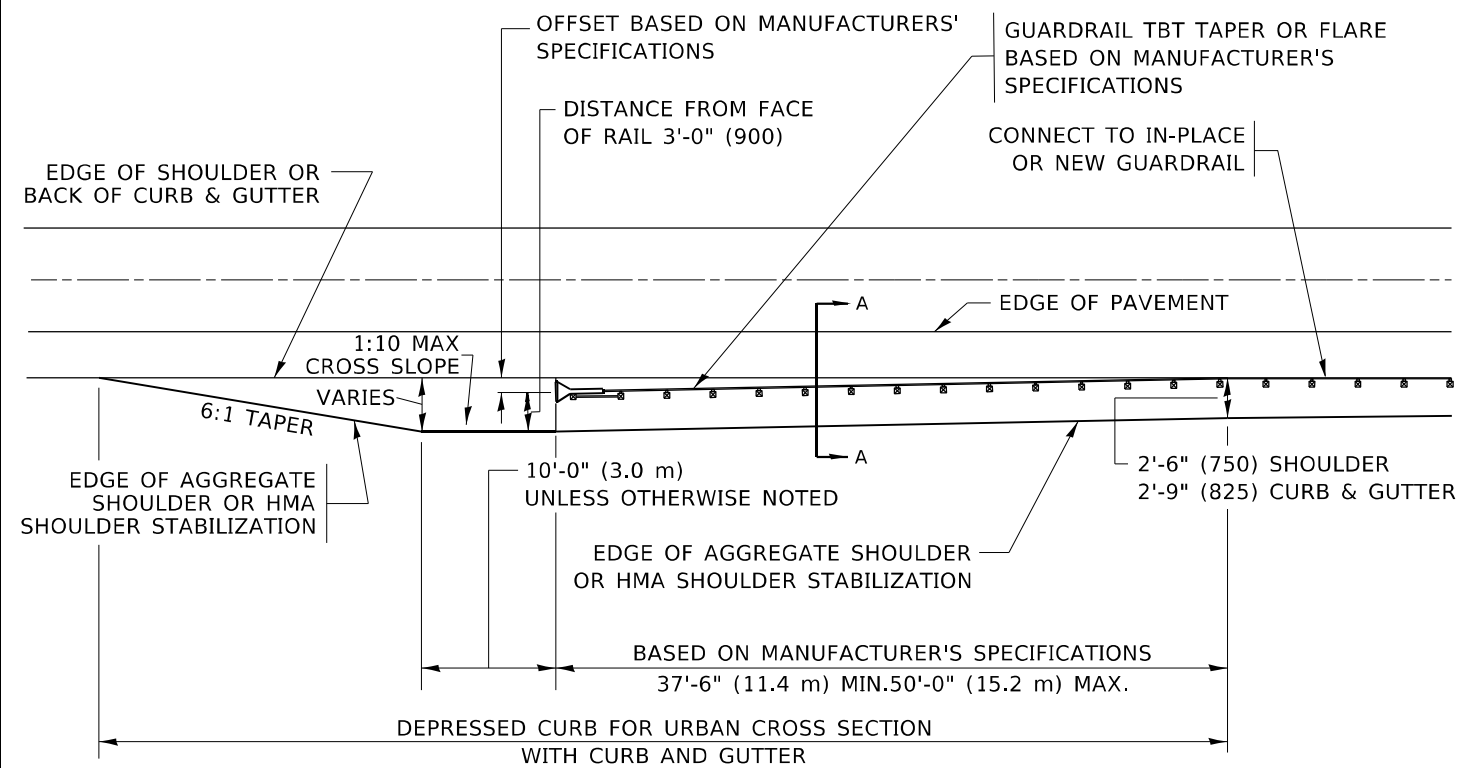


**SECTION A-A**

**NOTES:**

1. THE AGGREGATE SHOULDER, 10 (250) OR HMA SHOULDER, 6 (150) (IF REQUIRED) SHALL EXTEND UNDER THE TRAFFIC BARRIER TERMINAL.
2. "EXISTING" GUARDRAIL REFERS TO CONNECTING TERMINAL SECTION TO GUARD RAILING PRIOR TO THE MIDWEST GUARDRAIL SYSTEM.
3. THE CONTRACTOR SHALL VERIFY THE TYPE/HEIGHT OF GUARDRAIL IN-PLACE BEFORE ORDERING THE NEW TERMINAL SECTION. COST INCLUDED WITH THE COST OF THE TERMINAL. THE TERMINAL SECTION HEIGHT TO BE PLACED MUST MATCH THE HEIGHT OF THE IN-PLACE GUARDRAIL.

**DETAILS FOR STEEL PLATE BEAM  
GUARD RAIL ADJACENT TO CURB AND GUTTER  
[FOR ROADWAY SPEED 35 MPH (60 kmh) TO 45 MPH (70 kmh)]**



**DEPRESSED CURB AND GUTTER AND  
SHOULDER TREATMENT AT TBT TY. 1 SPL.**

AGGREGATE SHOULDER, 10 (250) WILL BE PAID ACCORDING TO SECTION 481.

HMA SHOULDERS 6 (150) (IF REQUIRED) WILL BE PAID ACCORDING TO SECTION 482.

COMB. CONC. C&G, STEEL PLATE BEAM GUARD RAIL AND TRAFFIC BARRIER TERMINAL, OF THE TYPE SPECIFIED WILL BE PAID FOR SEPARATELY.

TBT = TRAFFIC BARRIER TERMINAL  
ALL DIMENSIONS ARE IN INCHES (MILLIMETERS)  
UNLESS OTHERWISE SHOWN.

\* COOK, DUPAGE, KANE

MODEL: Default  
FILE NAME: p:\pub\mcrnono.dwg  
PROJECT: 103018.CaddData\Design\B545.dwg  
PROJECT: 103018.CaddData\Design\B545.dwg

USER NAME = bilgramisa	DESIGNED - M. DE YONG	REVISED - R. BORO 12-08-2008
	DRAWN -	REVISED - R. BORO 09-14-2009
PLOT SCALE = 100,0000' / in.	CHECKED -	REVISED - R. BORO 08-06-2012
PLOT DATE = 3/12/2021	DATE - 09-22-90	REVISED - R. BORO 05-08-2015

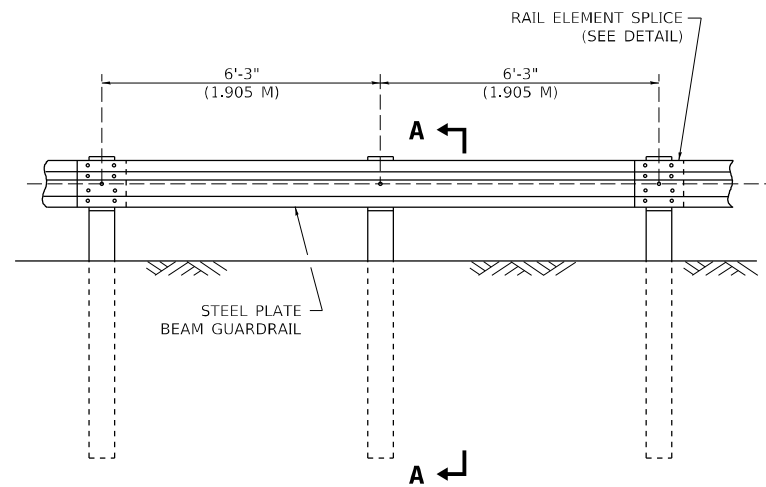
**STATE OF ILLINOIS  
DEPARTMENT OF TRANSPORTATION**

**DETAILS FOR DEPRESSED CURB & GUTTER AND  
SHOULDER TREATMENT AT TBT TY. 1 SPL.**

SCALE: NONE SHEET 1 OF 1 SHEETS STA. TO STA.

F.A.P. RTE.	SECTION	COUNTY	TOTAL SHEETS	SHEET NO.
345	2017-044TS&GRR	*	17	8
<b>BD600-10 (BD 34)</b>			CONTRACT NO. 62F72	
ILLINOIS FED. AID PROJECT				

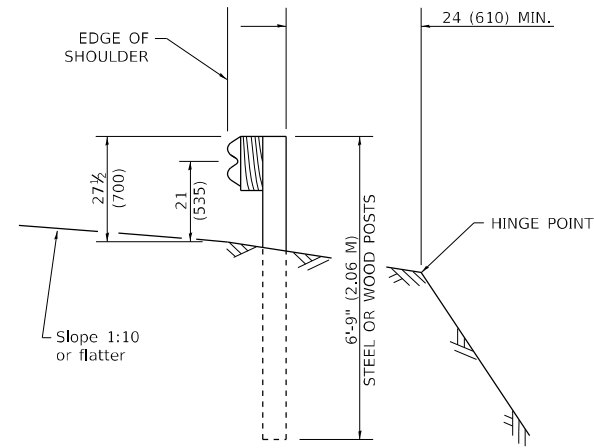




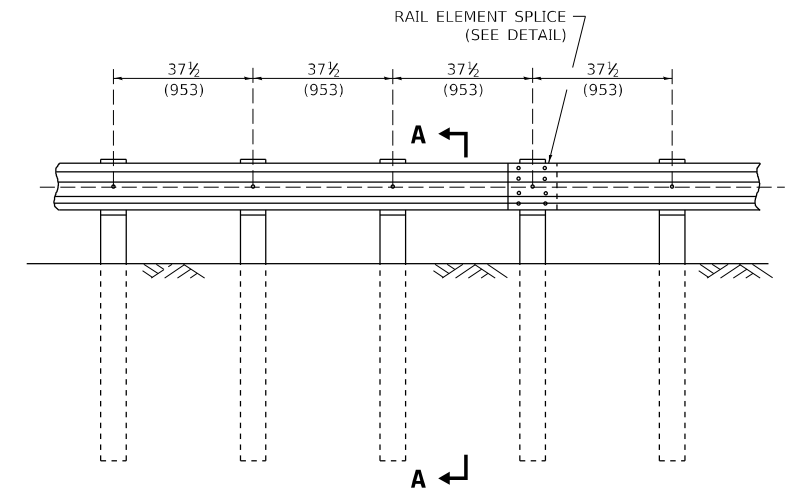
**ELEVATION**

**TYPE A**

6'-3" (1.905 M) TYPICAL POST SPACING



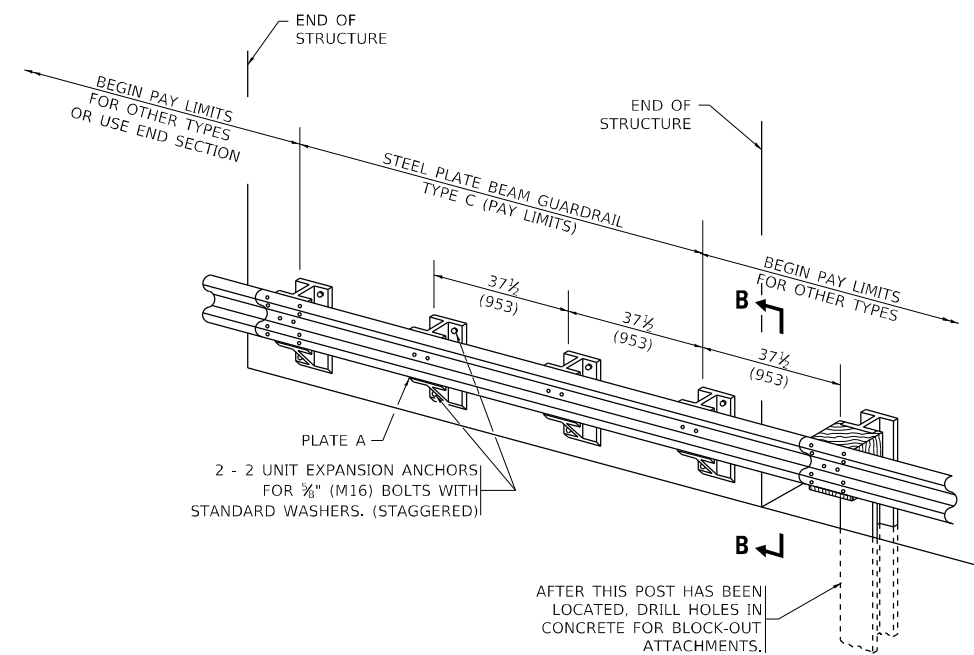
**SECTION A-A**



**ELEVATION**

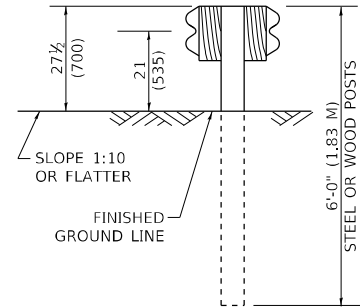
**TYPE A**

37 1/2 (953) CLOSED POST SPACING

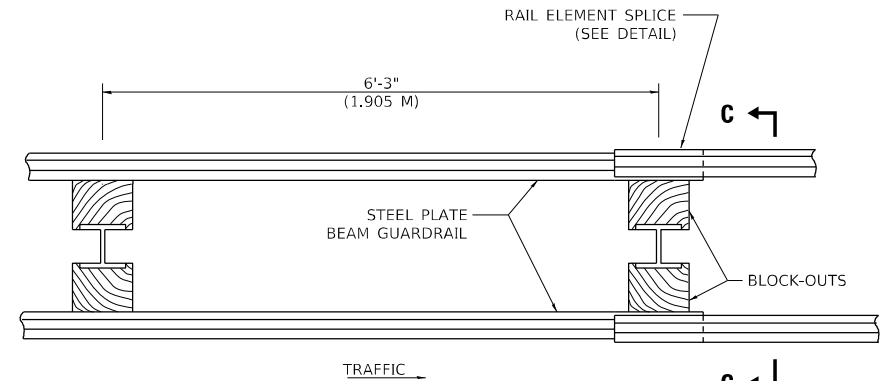


**TYPE C**

37 1/2 (953) BLOCK-OUT SPACING



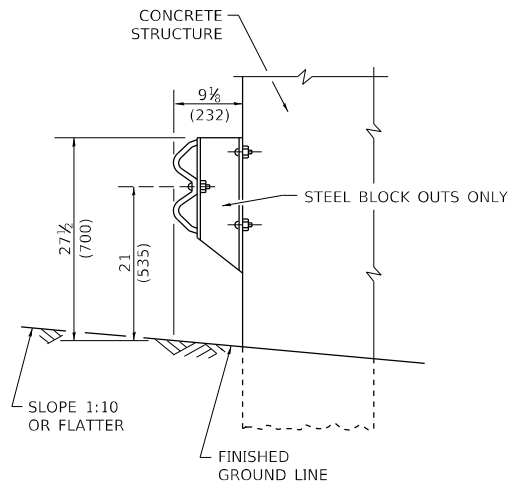
**SECTION C-C**



**PLAN**

**TYPE D**

DOUBLE STEEL PLATE BEAM GUARDRAIL  
6'-3" (1.905 M) TYPICAL POST SPACING



**SECTION B-B**

**GENERAL NOTES**

ALL SLOPE RATIOS ARE EXPRESSED AS UNITS OF VERTICAL DISPLACEMENT TO UNITS OF HORIZONTAL DISPLACEMENT (V:H).

ALL DIMENSIONS ARE IN INCHES (MILLIMETERS) UNLESS OTHERWISE SHOWN.

THE EXISTING STEEL POSTS MAY BE DRILLED TO MATCH THE BOLT PATTERN SHOWN HEREIN FOR THE WOOD BLOCK-OUT, OR A NEW STEEL POST SHALL BE PROVIDED.

THIS DETAIL IS APPLICABLE TO THE GUARDRAIL SYSTEM USED PRIOR TO JANUARY 1, 2007. FOR DETAILS ON THE MIDWEST GUARDRAIL SYSTEM, SEE STANDARD 630001.

MODEL: Default  
FILE NAME: p:\workroom\dot\illinois\dot\pww\dot\Documents\DOT - Offices\Distrefc - 1\Projects\ID 103018\CaddData\Design\Distrefc.dgn

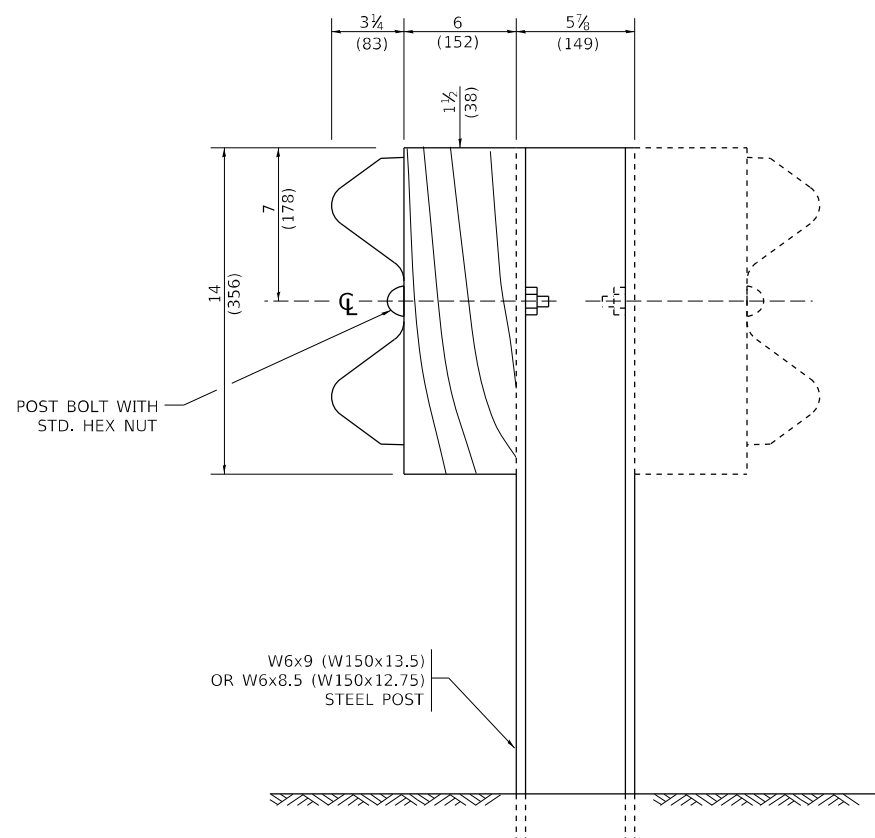
USER NAME = Bilgramisa	DESIGNED -	REVISED -
	DRAWN -	REVISED -
PLOT SCALE = 100,0000' / in.	CHECKED -	REVISED -
PLOT DATE = 3/12/2021	DATE -	REVISED -

**STATE OF ILLINOIS  
DEPARTMENT OF TRANSPORTATION**

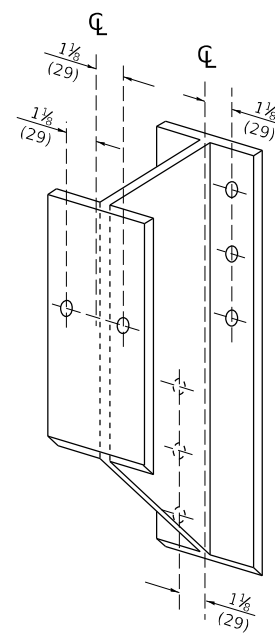
<b>REMOVE AND REERECT STEEL PLATE BEAM GUARDRAIL</b>			
SCALE: NONE	SHEET 1	OF 4 SHEETS	STA. TO STA.

F.A.P. RTE.	SECTION	COUNTY	TOTAL SHEETS	SHEET NO.
345	2017-044TS&GRR	*	17	9
<b>BM-21</b>			CONTRACT NO. 62F72	
ILLINOIS FED. AID PROJECT				

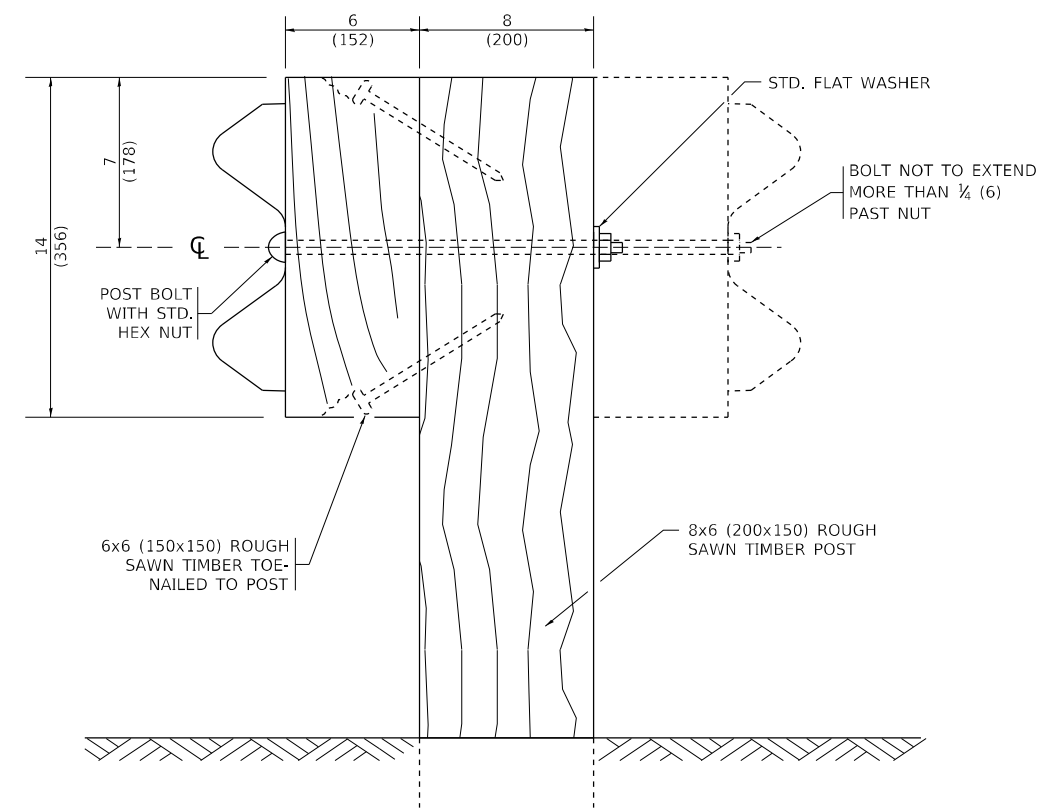
\* COOK, DUPAGE, KANE



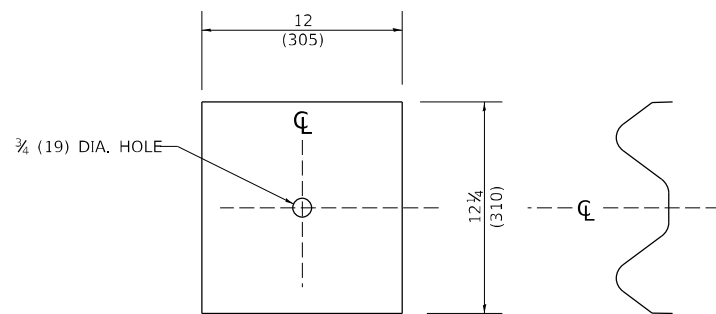
**STEEL POST CONSTRUCTION**



**STEEL BLOCK-OUT DETAIL**



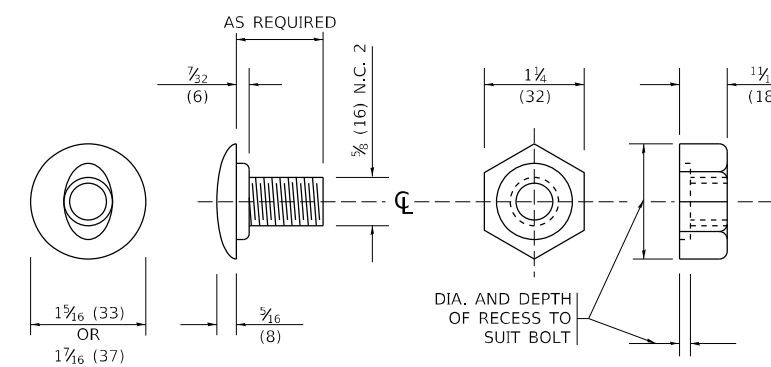
**WOOD POST CONSTRUCTION**



**NOTE:**

PLATE A SHALL BE PLACED BETWEEN RAIL ELEMENT AND BLOCK-OUT AT NON-SPLICE MOUNTING POINTS ONLY WHEN STEEL BLOCK-OUTS ARE USED.

**PLATE A**



**POST OR SPLICE BOLT & NUT**

MODEL: Default  
FILE NAME: p:\pub\mroom.dwt\illinois.gov\PWIDOT\Documents\DOT\_Offices\Distrefc\_1\Projects\ID.03018\CaddData\Design\Distf.dgn

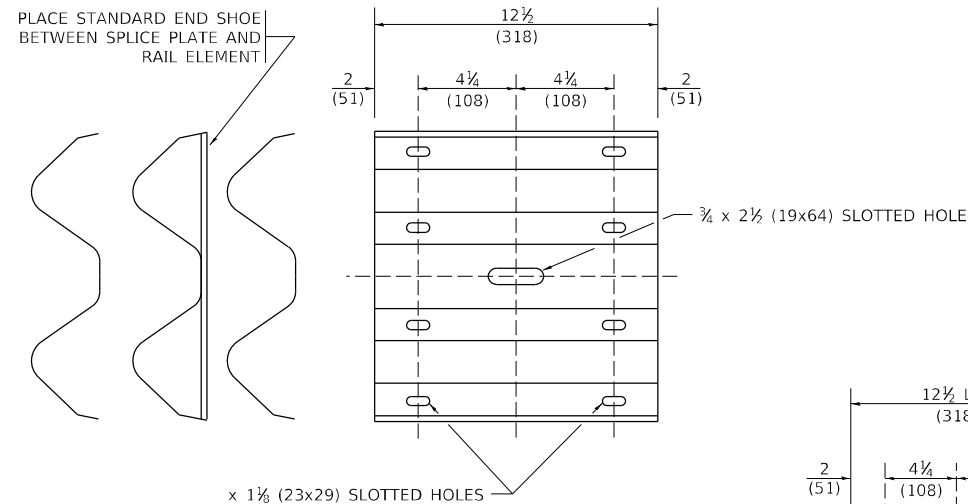
USER NAME = Bilgramisa	DESIGNED -	REVISED -
	DRAWN -	REVISED -
PLOT SCALE = 100,0000' / in.	CHECKED -	REVISED -
PLOT DATE = 3/12/2021	DATE -	REVISED -

**STATE OF ILLINOIS  
DEPARTMENT OF TRANSPORTATION**

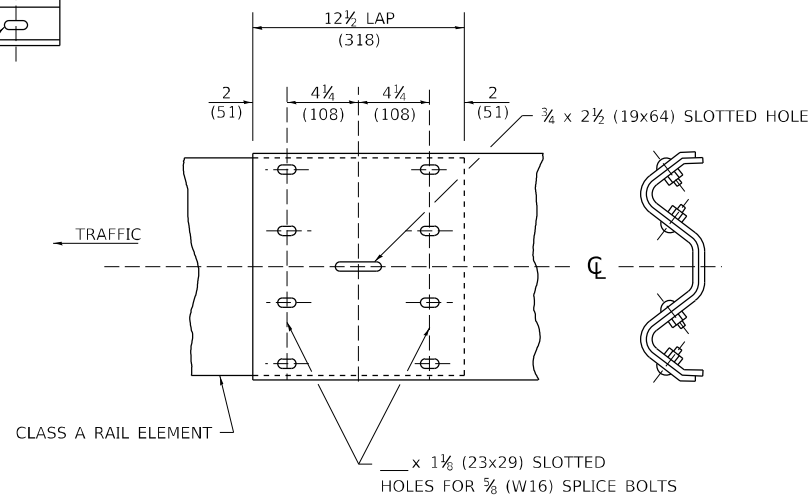
<b>REMOVE AND REERECT STEEL PLATE BEAM GUARDRAIL</b>			
SCALE: NONE	SHEET 2	OF 4 SHEETS	STA. TO STA.

F.A.P. RTE. 345	SECTION 2017-044TS&GRR	COUNTY *	TOTAL SHEETS 17	SHEET NO. 10
<b>BM-21</b>			CONTRACT NO. 62F72	
ILLINOIS FED. AID PROJECT				

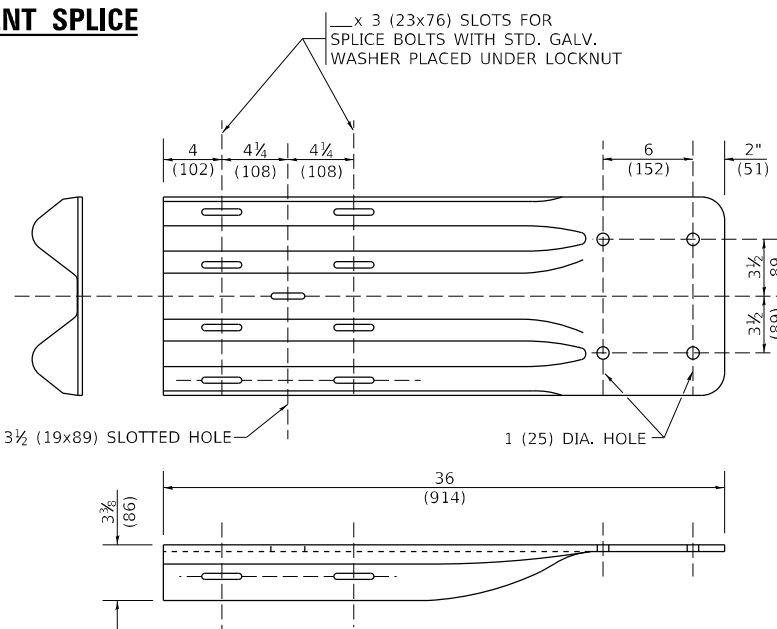
\* COOK, DUPAGE, KANE



**SPLICE PLATE**



**RAIL ELEMENT SPLICE**



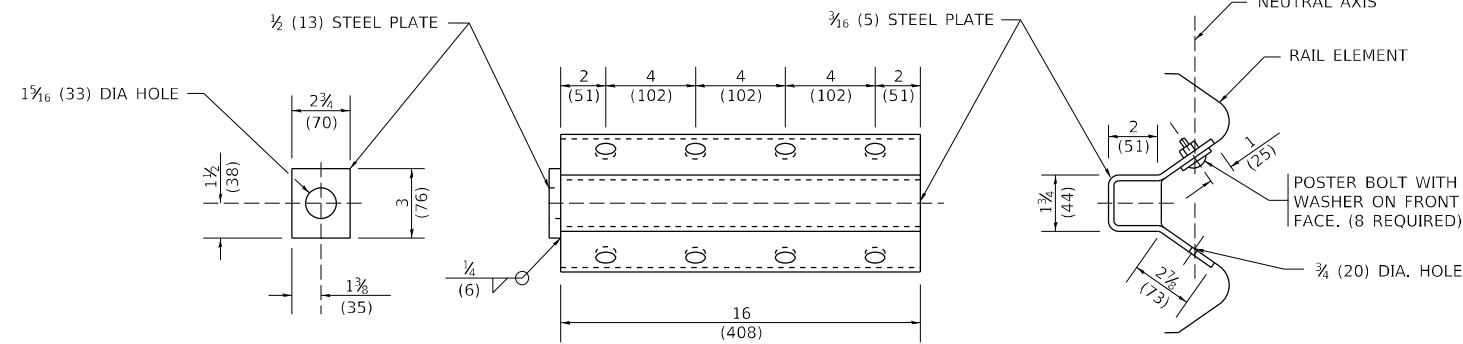
**END SHOE**

**NOTE:**

WHEN END SHOE IS ATTACHED TO A BRIDGE PARAPET WHICH HAS AN EXPANSION JOINT, THE BOLTS SHALL BE PROVIDED WITH A LOCKNUT OR DOUBLE NUT AND SHALL BE TIGHTENED ONLY TO A POINT THAT WILL ALLOW GUARDRAIL MOVEMENT.

THE STANDARD END SHOE SHALL BE ATTACHED TO THE CONCRETE WITH PRE-DRILLED OR SELF-DRILLING ANCHOR BOLTS. THE ANCHOR CONE SHALL BE SET FLUSH WITH THE SURFACE OF THE CONCRETE.

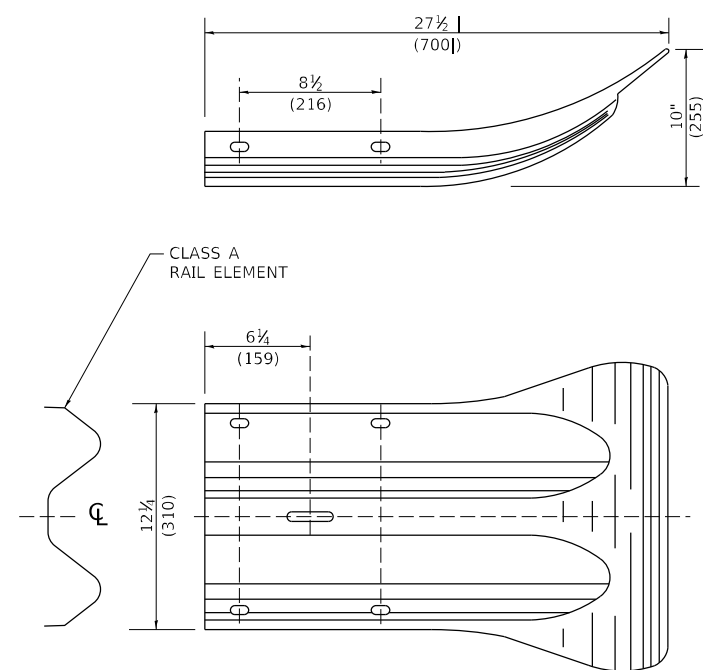
EXTERNALLY THREADED STUDS PROTRUDING FROM THE SURFACE OF THE CONCRETE WILL NOT BE PERMITTED.



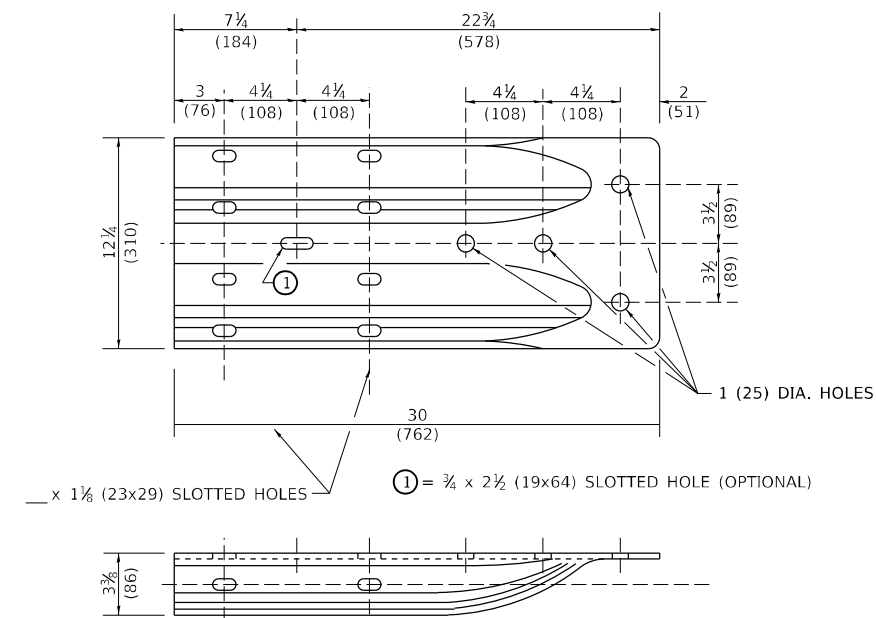
**NOTE:**

ANCHOR PLATE T SHALL BE USED TO ATTACH CABLE ASSEMBLY TO GUARDRAIL WHEN REQUIRED ON TRAFFIC BARRIER TERMINALS.

**ANCHORE PLATE T DETAILS**



**END SECTION**



**ALTERNATE END SHOE**

MODEL: Default  
FILE NAME: p:\pub\mroom.dwg  
PROJECT: 103018.CADDData\Design\DS54.dwg

USER NAME = Billgramisa	DESIGNED -	REVISED -
PLOT SCALE = 100,0000' / in.	DRAWN -	REVISED -
PLOT DATE = 3/12/2021	CHECKED -	REVISED -
	DATE -	REVISED -

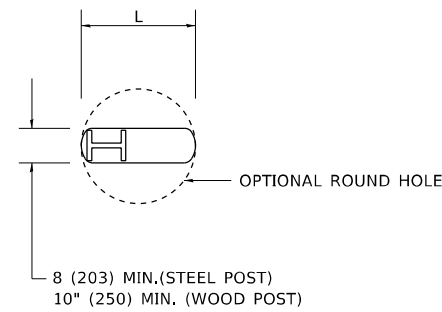
**STATE OF ILLINOIS  
DEPARTMENT OF TRANSPORTATION**

**REMOVE AND REERECT  
STEEL PLATE BEAM GUARDRAIL**

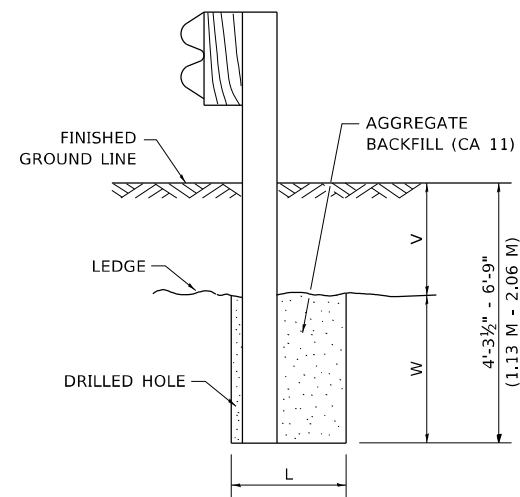
SCALE: NONE SHEET 3 OF 4 SHEETS STA. TO STA.

F.A.P. RTE.	SECTION	COUNTY	TOTAL SHEETS	SHEET NO.
345	2017-044TS&GRR	*	17	11
<b>BM-21</b>			CONTRACT NO. 62F72	
ILLINOIS FED. AID PROJECT				

\* COOK, DUPAGE, KANE

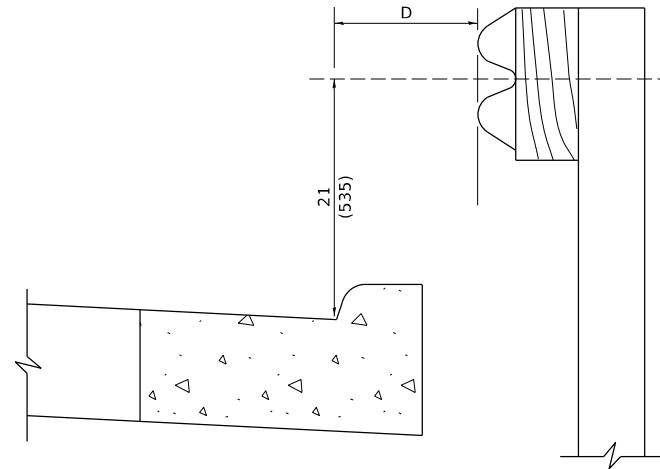


**PLAN**



**ELEVATION**

**FOOTING FOR POST WHEN IMPERVIOUS MATERIAL IS ENCOUNTERED**



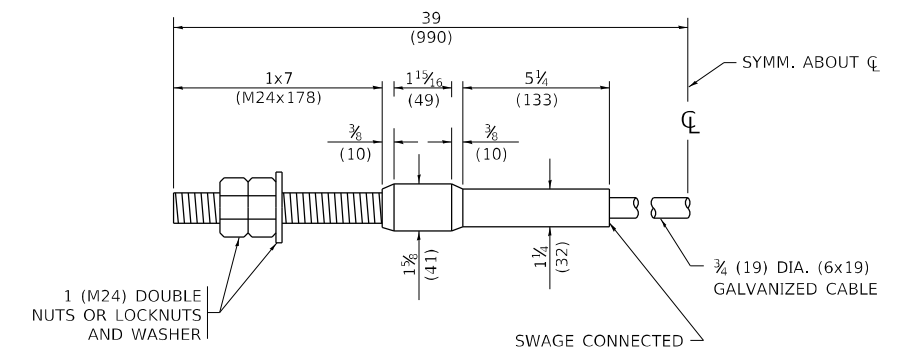
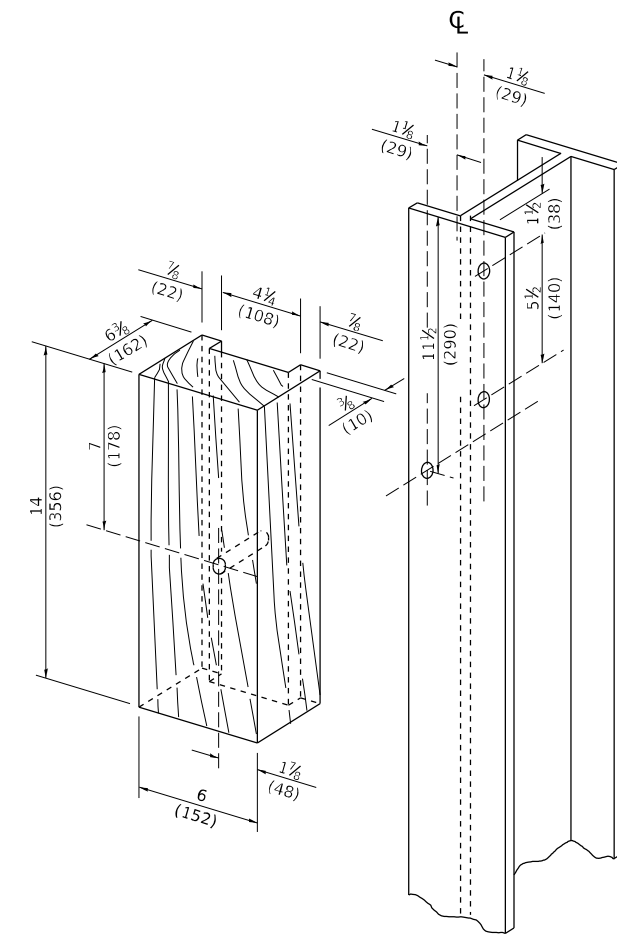
**NOTE:**

IF IT IS NECESSARY FOR D TO BE MORE THAN 12 (300) AND LESS THAN 10'-0" (3.0 M) TYPE M-2 (M-5) CURB AND GUTTER (STD. 606001) SHALL BE USED IN FRONT OF AND IN ADVANCE OF THE GUARDRAIL.

**GUARDRAIL PLACED BEHIND CURB**

(D = O DESIRABLE TO 12 (300) MAXIMUM)

V	W	L	
		STEEL POST	WOOD POST
0 - 18 (0 - 460)	24 (610)	21 (530)	23 (580)
>18 - 41.5 (> 460 - 825)	12 (305)	8 (203)	10 (250)
>41.5 - 53.5 (> 825 - 1.13 M)	12 - 0 (350 - 0)	8 (203)	10 (250)



**CABLE ASSEMBLY**

(40,000 LBS (18,100 KG) MIN. BREAKING STRENGTH)  
TIGHTEN TO TAUT TENSION

MODEL: Default  
FILE NAME: p:\pub\mroom.edu\illinois.gov\PIWDOT\Documents\DOT Office\Drawings\1\Projects\103018\CADD\Drawings\Design\DRS54.dgn

USER NAME = Bilgramisa	DESIGNED -	REVISED -
PLOT SCALE = 100,0001' / in.	DRAWN -	REVISED -
PLOT DATE = 3/12/2021	CHECKED -	REVISED -
	DATE -	REVISED -

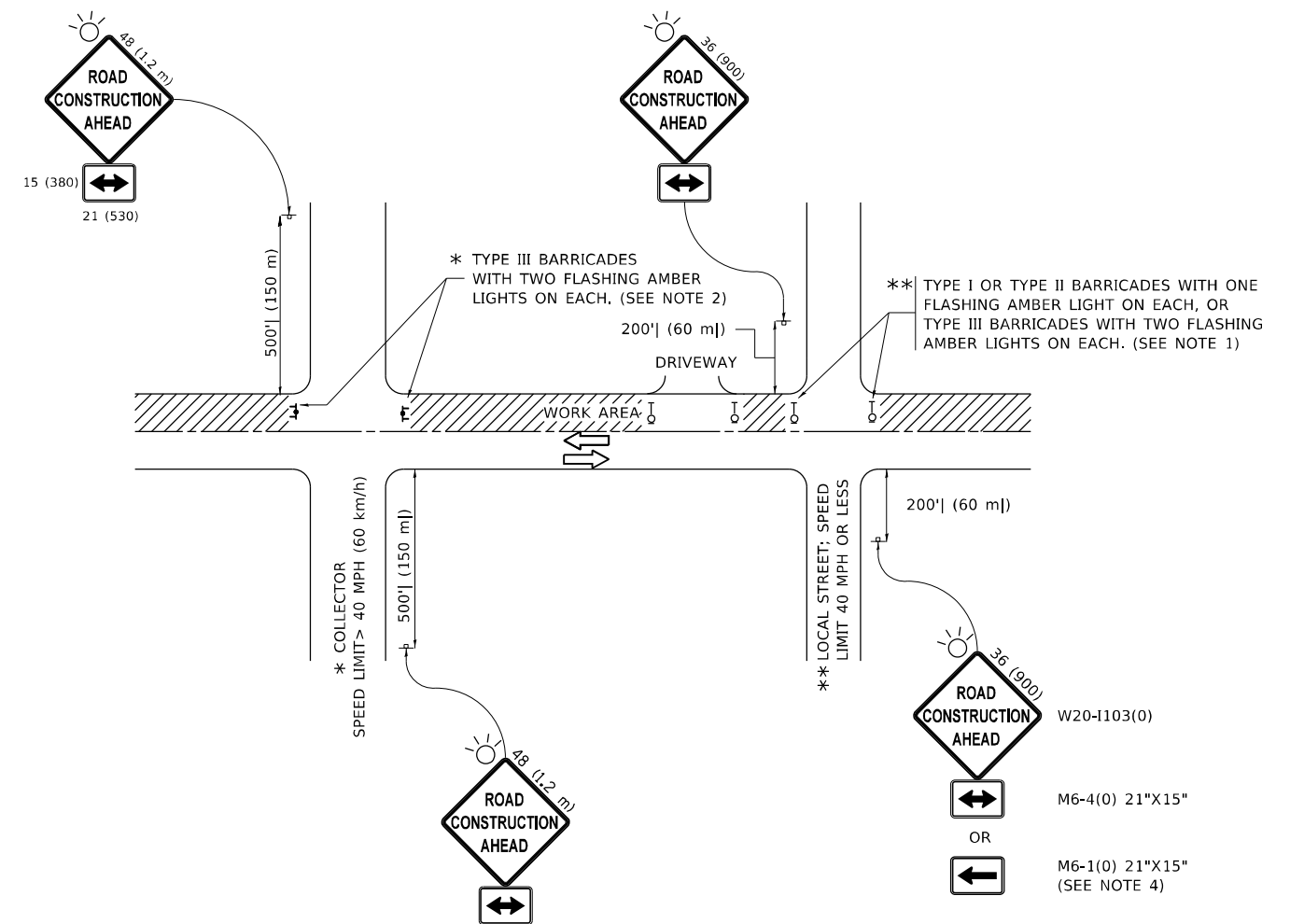
**STATE OF ILLINOIS  
DEPARTMENT OF TRANSPORTATION**

**REMOVE AND REERECT  
STEEL PLATE BEAM GUARDRAIL**

SCALE: NONE SHEET 4 OF 4 SHEETS STA. TO STA.

F.A.P. RTE. 345	SECTION 2017-044TS&GRR	COUNTY *	TOTAL SHEETS 17	SHEET NO. 12
BM-21			CONTRACT NO. 62F72	
ILLINOIS FED. AID PROJECT				

\* COOK, DUPAGE, KANE



**NOTES:**

1. SIDE ROAD WITH A SPEED LIMIT OF 40 MPH (60 km/h) OR LESS AS SHOWN ON THE DRAWING AND AS DIRECTED BY THE ENGINEER:
  - a) ONE "ROAD CONSTRUCTION AHEAD" SIGN 36 x 36 (900x900) WITH A FLASHER MOUNTED ON IT APPROXIMATELY 200' (60 m) IN ADVANCE OF THE MAIN ROUTE.
  - b) THE CLOSED PORTION OF THE MAIN ROUTE SHALL BE PROTECTED BY BLOCKING WITH TYPE I, TYPE II OR TYPE III BARRICADES, 1/3 OF THE CROSS SECTION OF THE CLOSED PORTION.
2. SIDE ROAD WITH A SPEED LIMIT GREATER THAN 40 MPH (60 km/h) AS SHOWN ON THE DRAWING AND AS DIRECTED BY THE ENGINEER:
  - a) ONE "ROAD CONSTRUCTION AHEAD" SIGN 48 x 48 (1.2 m x 1.2 m) WITH A FLASHER MOUNTED ON IT APPROXIMATELY 500' (150 m) IN ADVANCE OF THE MAIN ROUTE.
  - b) THE CLOSED PORTION OF THE MAIN ROUTE SHALL BE PROTECTED BY BLOCKING WITH TYPE III BARRICADES, 1/2 OF THE CROSS SECTION OF THE CLOSED PORTION.
3. CONES MAY BE SUBSTITUTED FOR BARRICADES OR DRUMS AT HALF THE SPACING DURING DAY OPERATIONS. CONES SHALL BE A MINIMUM OF 28 (710) IN HEIGHT.
4. SIGNING AND THE WORK ZONE, A SINGLE HEADED ARROW (M6-1) SHALL BE USED IN LIEU OF THE DOUBLE HEADED ARROW (M6-4).
5. WHEN WORK IS BEING PERFORMED ON A SIDE ROAD OR DRIVEWAY, FOLLOW THE APPLICABLE STANDARD(S). THE DIRECTIONAL ARROW (M6-1 OR M6-4) SHALL BE COVERED OR REMOVED WHEN NO LONGER CONSISTENT WITH THE TRAFFIC CONTROL SET-UP.
6. ADVANCE WARNING SIGNS ARE TO BE OMITTED ON DRIVEWAYS UNLESS OTHERWISE SPECIFIED IN THE PLANS OR BY THE ENGINEER.
7. THE TRAFFIC CONTROL AND PROTECTION FOR SIDE ROADS, INTERSECTIONS, AND DRIVEWAYS SHALL BE INCLUDED IN THE COST OF SPECIFIED TRAFFIC CONTROL STANDARDS OR ITEMS.

All dimensions are in inches (millimeters) unless otherwise shown.

\* COOK, DUPAGE, KANE

**STATE OF ILLINOIS  
DEPARTMENT OF TRANSPORTATION**

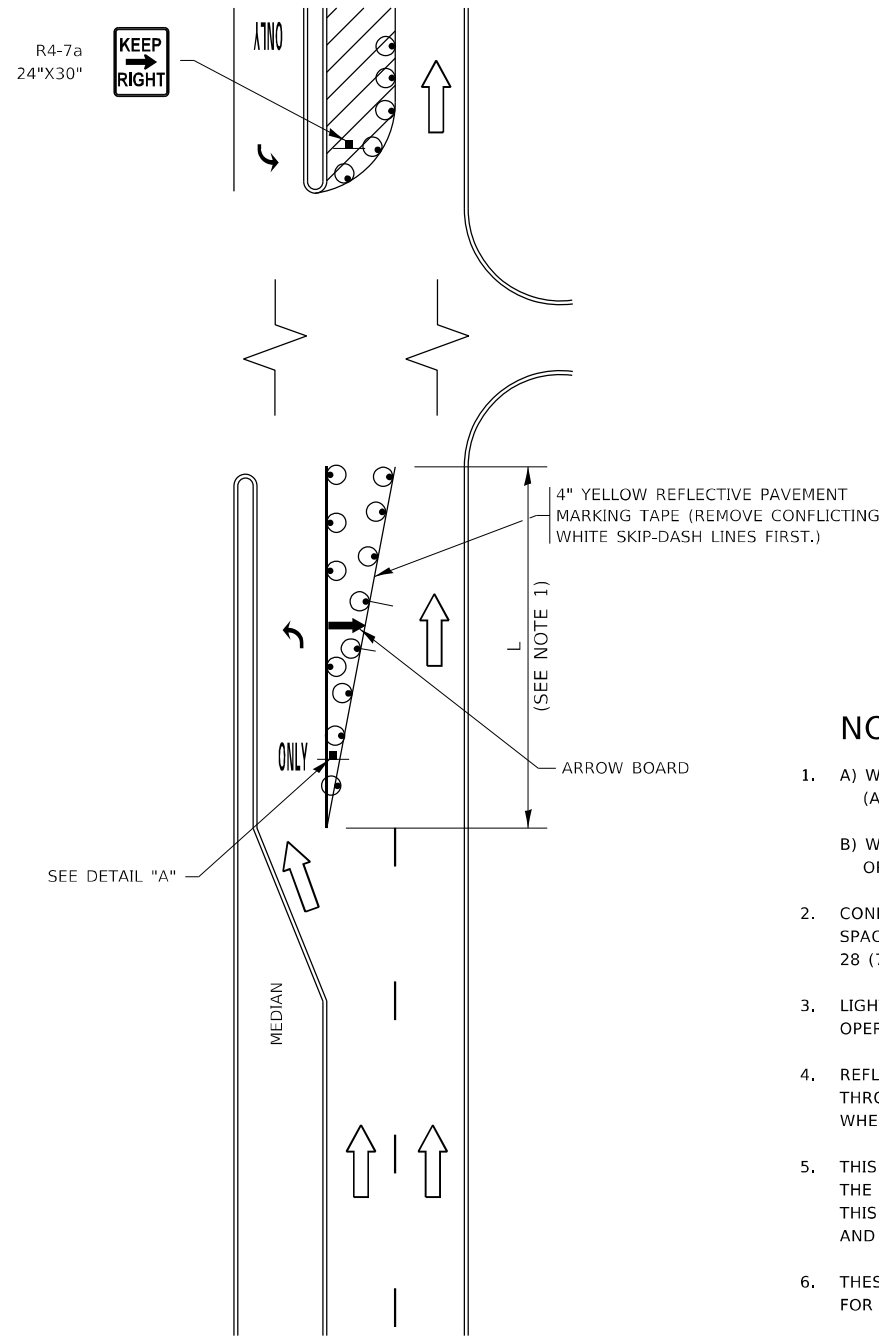
**TRAFFIC CONTROL AND PROTECTION FOR  
SIDE ROADS, INTERSECTIONS, AND DRIVEWAYS**

SCALE: NONE SHEET 1 OF 1 SHEETS STA. TO STA.

F.A.P. RTE.	SECTION	COUNTY	TOTAL SHEETS	SHEET NO.
345	2017-044TS&GRR	*	17	13
<b>TC-10</b>			CONTRACT NO. 62F72	
ILLINOIS FED. AID PROJECT				

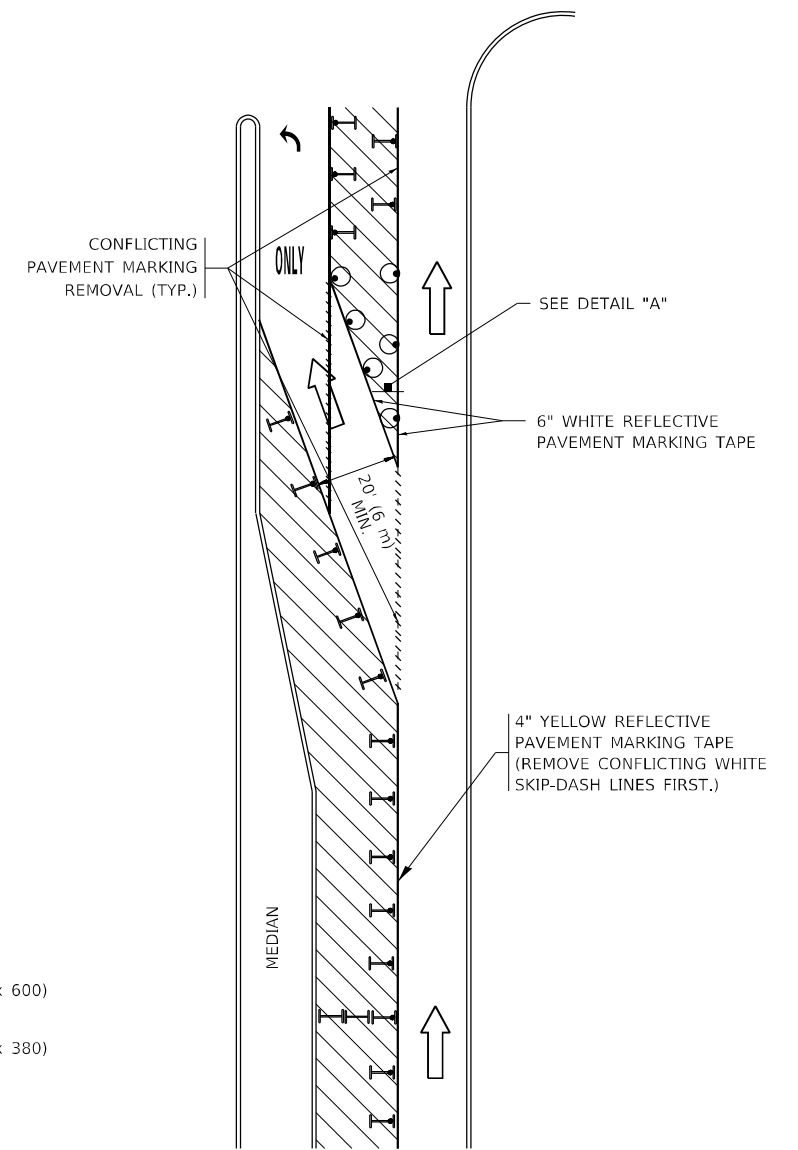
USER NAME = Bilgramisa	DESIGNED - L.H.A.	REVISED - A. HOUSEH 10-15-96
PLOT SCALE = 100,0000' / in.	CHECKED -	REVISED - T. RAMMACHER 01-06-00
PLOT DATE = 3/12/2021	DATE - 06-89	REVISED - A. SCHUETZE 07-01-13
		REVISED - A. SCHUETZE 09-15-16

# TURN BAY ENTRANCE AT START OF LANE CLOSURE TAPER



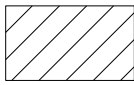
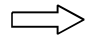





**FIGURE 1**

# TURN BAY ENTRANCE WITHIN A LANE CLOSURE



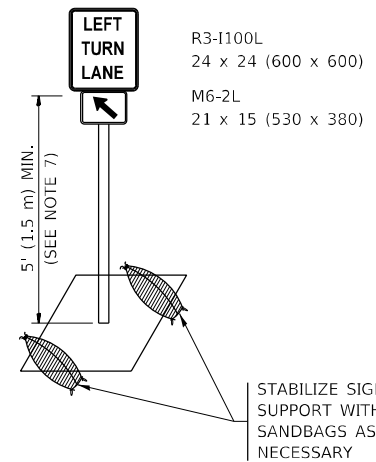
**FIGURE 2**

## LEGEND

-  WORK AREA
-  LANE OPEN TO TRAFFIC
-  ARROW BOARD
-  TYPE I OR II BARRICADE OR DRUM WITH STEADY BURN LIGHT
-  DRUM WITH STEADY BURN LIGHT
-  SIGN ASSEMBLY
-  TYPE I OR II CHECK BARRICADE WITH FLASHING LIGHT

## NOTES:

1. A) WHEN "L" IS ≤ THE STORAGE LENGTH OF THE TURN LANE (AS SHOWN IN FIG. 1), USE FIGURE 1.  
B) WHEN "L" IS > THE STORAGE LENGTH OF THE TURN LANE OR THE TURN LANE IS WITHIN THE LANE CLOSURE, USE FIGURE 2.
2. CONES MAY BE SUBSTITUTED FOR BARRICADES OR DRUMS AT HALF THE SPACING DURING DAY OPERATIONS. CONES SHALL BE A MINIMUM OF 28 (710) IN HEIGHT.
3. LIGHTS WILL NOT BE REQUIRED ON BARRICADES OR DRUMS FOR DAY OPERATIONS. ALL LIGHTS SHALL BE MONODIRECTIONAL.
4. REFLECTIVE TEMPORARY PAVEMENT MARKINGS SHALL BE PLACED THROUGHOUT THE BARRICADED AREAS OF EACH TURN BAY AS SHOWN WHERE THE CLOSURE TIME IS GREATER THAN FOURTEEN (14) DAYS.
5. THIS APPLICATION ALSO APPLIES WHEN WORK IS BEING PERFORMED IN THE RIGHT LANE(S) AND THE RIGHT TURN BAY IS TO REMAIN OPEN. UNDER THIS CONDITION, "RIGHT TURN LANE" R3-1100R 24 x 24 (600 x 600) AND M6-2R 21 x 15 (530 x 380) SHALL BE USED.
6. THESE CONTROLS SHALL SUPPLEMENT MAINLINE TRAFFIC CONTROL FOR LANE CLOSURES.
7. THE SIGNS SHALL BE MOUNTED ABOVE THE BARRICADES/DRUMS ON SEPARATE SIGN SUPPORTS THAT MEET NCHRP 350 OR MASH REQUIREMENTS.
8. TRAFFIC CONTROL AND PROTECTION AT TURN BAYS (TO REMAIN OPEN TO TRAFFIC) SHALL BE INCLUDED IN THE COST OF SPECIFIED TRAFFIC CONTROL STANDARDS OR ITEMS.



**DETAIL A**

All dimensions are in inches (millimeters) unless otherwise shown.

\* COOK, DUPAGE, KANE

MODEL Path: \\p01001001\projects\1031018\CADDData\Design\Dis54.dgn  
FILE Name: \\p01001001\projects\1031018\CADDData\Design\Dis54.dgn

USER NAME = Billgramisa	DESIGNED - T. RAMMACHER 09-08-94	REVISED - R. BORO 09-14-09
	DRAWN - A. HOUSEH 11-07-95	REVISED - A. SCHUETZE 07-01-13
PLOT SCALE = 100,0000' / in.	CHECKED - A. HOUSEH 10-12-96	REVISED - A. SCHUETZE 09-15-16
PLOT DATE = 3/12/2021	DATE - T. RAMMACHER 01-06-00	REVISED -

**STATE OF ILLINOIS  
DEPARTMENT OF TRANSPORTATION**

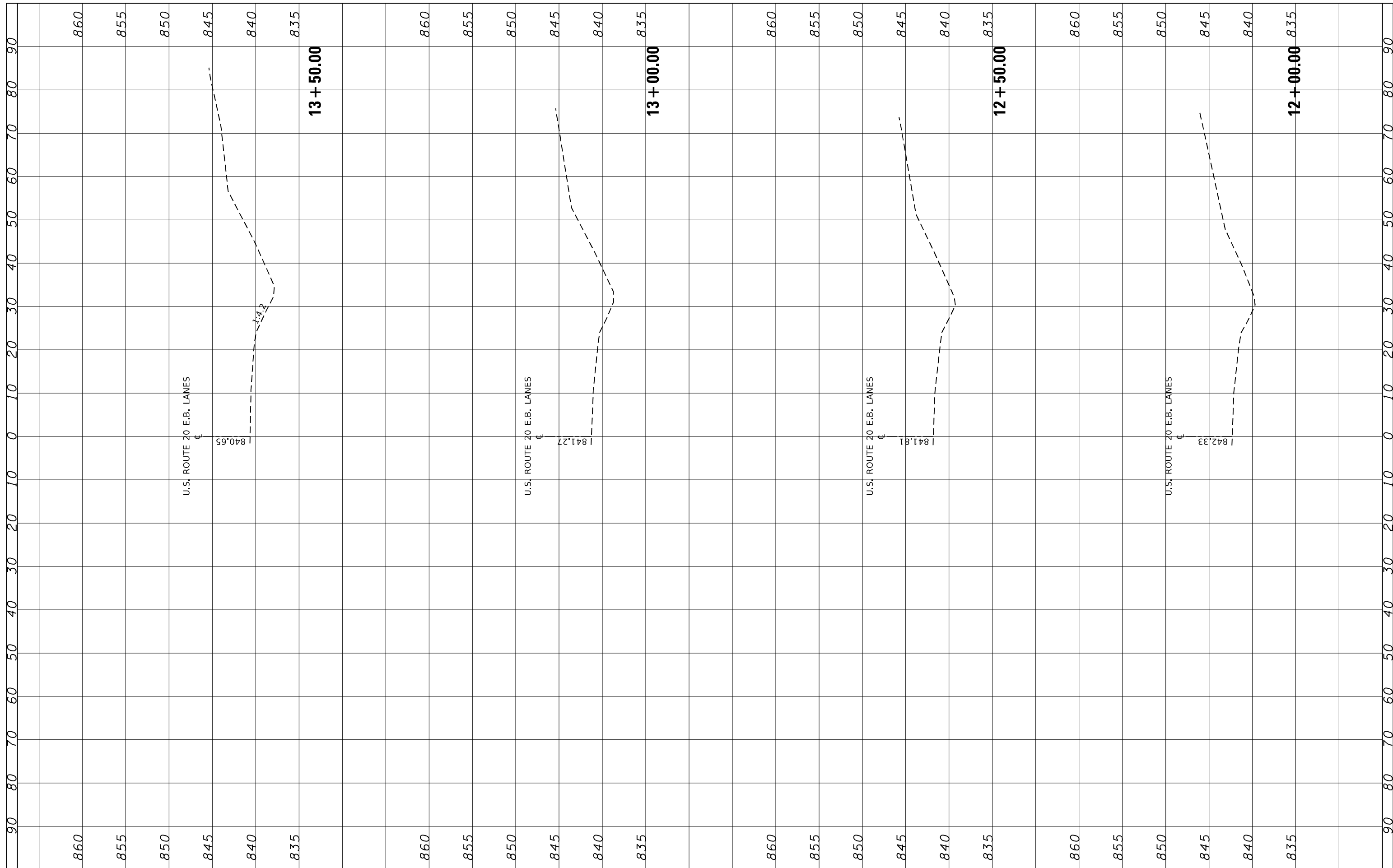
**TRAFFIC CONTROL AND PROTECTION AT TURN BAYS  
(TO REMAIN OPEN TO TRAFFIC)**

SCALE: NONE SHEET 1 OF 1 SHEETS STA. TO STA.

F.A.P. RTE.	SECTION	COUNTY	TOTAL SHEETS	SHEET NO.
345	2017-044TS&GRR	*	17	14
TC-14		CONTRACT NO. 62F72		
ILLINOIS FED. AID PROJECT				

FINISH SURVEY NO.	SURVEYED PLOTTED AREAS CHECKED	BY	DATE
NOTE BOOK NO.	TEMPLATE AREAS CHECKED		

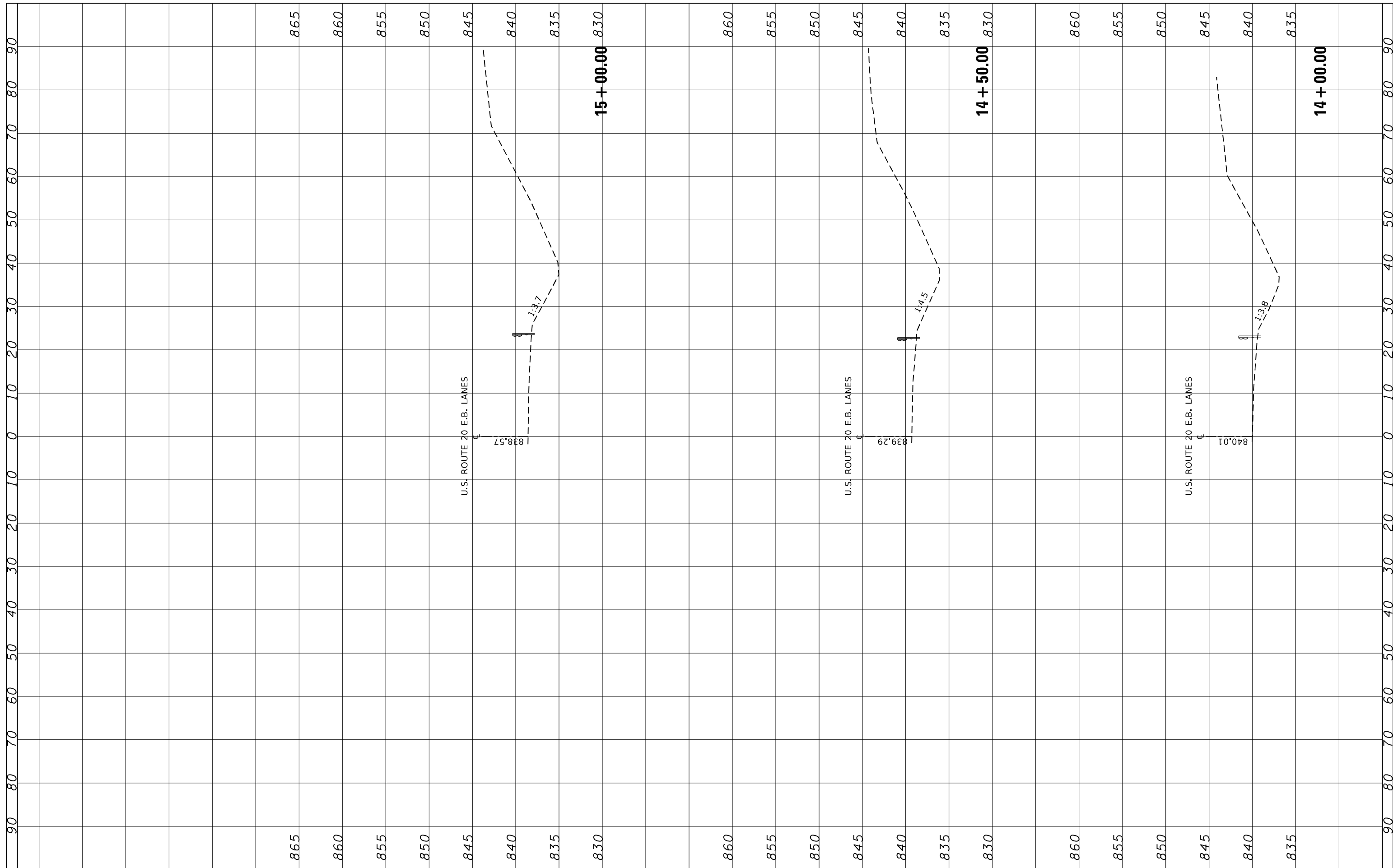
ORIGINAL SURVEY NO.	SURVEYED PLOTTED AREAS CHECKED	BY	DATE
NOTE BOOK NO.	TEMPLATE AREAS CHECKED		



FILE NAME =	USER NAME = Bilgoreisa	DESIGNED -	REVISED -	<b>STATE OF ILLINOIS DEPARTMENT OF TRANSPORTATION</b>	<b>CROSS SECTIONS EB U.S. 20 W/O RANDALL RD.</b>				F.A.P. RTE. 345	SECTION 2017-044TS&GRR	COUNTY KANE	TOTAL SHEETS 17	SHEET NO. 15
p:\planroom.dot\illinois.gov\PI\DOT\Documents\DOT Offices\District 1\Projects\D103018\CADD\Drawings\103018-shr-ssht.US20.dgn	DRAWN	CHECKED -	REVISED -		SCALE:	SHEET	OF	SHEETS	STA. 12+00.00	TO STA. 13+50.00	CONTRACT NO. 62F72		
PLOT SCALE = 20.0000' / in.		DATE -	REVISED -		ILLINOIS FED. AID PROJECT								
Default													

FINN	SURVEYED	BY	DATE
NO.	NOTE BOOK		
	PLOTTED		
	TEMPLATE		
	AREAS		
	CHECKED		

ORIGINAL	SURVEYED	BY	DATE
NO.	NOTE BOOK		
	PLOTTED		
	TEMPLATE		
	AREAS		
	CHECKED		



FILE NAME = p:\planroom.dot\illinois.gov\PI\DOT\Documents\DOT Offices\District 1\Projects\DI03018\CADD\DRAWN\DI03018-sht-xssht.US20.dgn

USER NAME = Bilgromiso  
 DESIGNED -  
 CHECKED -  
 DATE -

REVISOR -  
 REVISOR -  
 REVISOR -  
 REVISOR -

**STATE OF ILLINOIS  
 DEPARTMENT OF TRANSPORTATION**

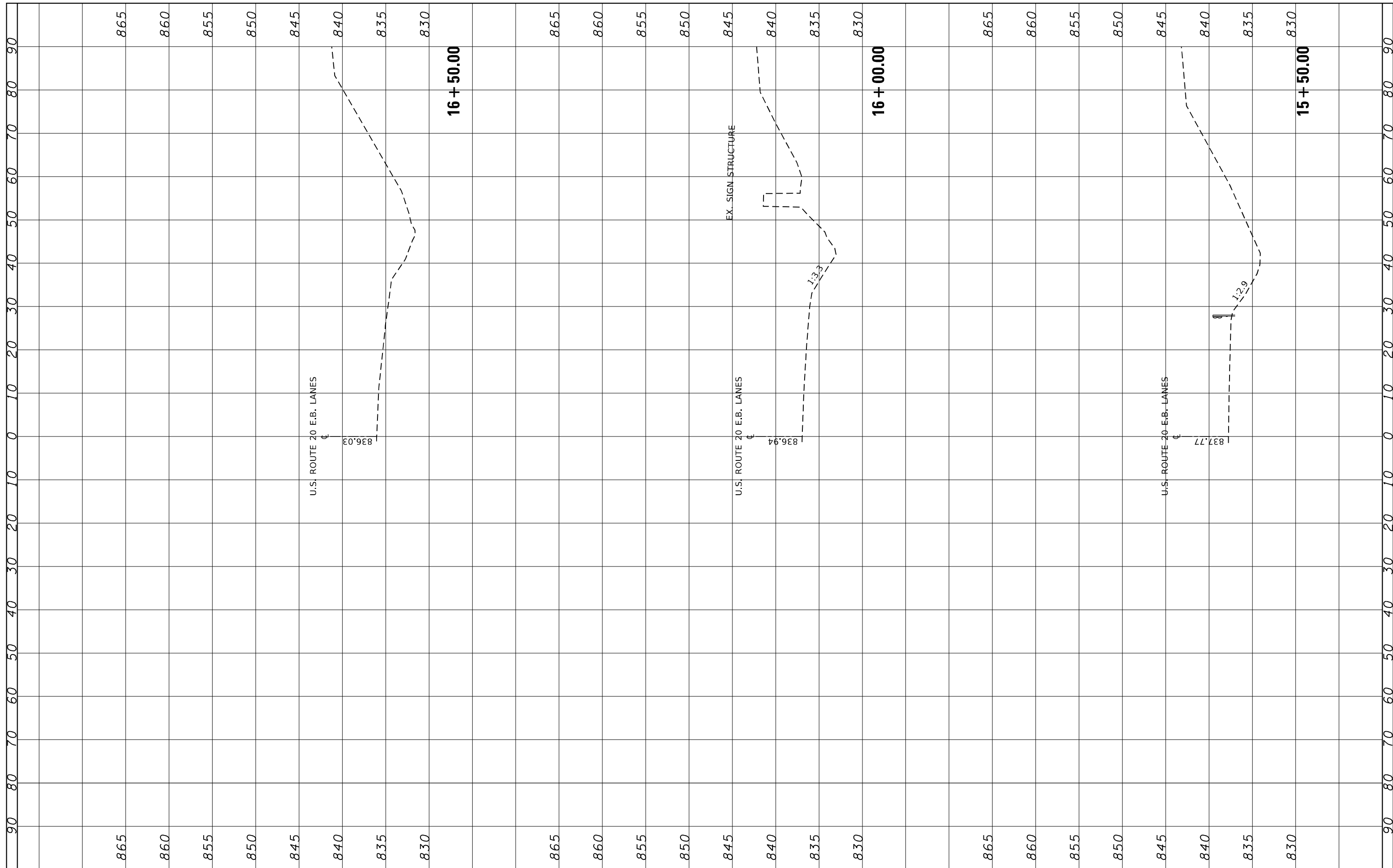
**CROSS SECTIONS  
 EB U.S. 20 W/O RANDALL RD.**  
 SCALE: SHEET OF SHEETS STA. 14+00.00 TO STA. 15+00.00

F.A.P. RTE.	SECTION	COUNTY	TOTAL SHEETS	SHEET NO.
345	2017-044TS&GRR	KANE	17	16
CONTRACT NO. 62F72			ILLINOIS FED. AID PROJECT	



FINISH SURVEY NO.	SURVEYED PLOTTED AREAS CHECKED	BY	DATE
NOTE BOOK NO.	TEMPLATE AREAS CHECKED		

ORIGINAL SURVEY NO.	SURVEYED PLOTTED AREAS CHECKED	BY	DATE
NOTE BOOK NO.	TEMPLATE AREAS CHECKED		



FILE NAME =	USER NAME = Bilgromiso	DESIGNED -	REVISED -	<b>STATE OF ILLINOIS DEPARTMENT OF TRANSPORTATION</b>	<b>CROSS SECTIONS EB U.S. 20 W/O RANDALL RD.</b>				F.A.P. RTE. 345	SECTION 2017-044TS&GRR	COUNTY KANE	TOTAL SHEETS 17	SHEET NO. 17
p:\planroom.dot\illinois.gov\PI\DOT\Documents\DOT Offices\District 1\Projects\D103018\CADD\DRAWN\103018-shr-xssht.US20.dgn	DRAWN	CHECKED -	REVISED -		SCALE:	SHEET	OF	SHEETS	STA. 15+50.00	TO STA. 16+50.00	CONTRACT NO. 62F72		
Default		DATE -	REVISED -		ILLINOIS FED. AID PROJECT								