

INDEX OF SHEETS

- 1. COVER SHEET
- 2. GENERAL NOTES
- 3 - 4. SUMMARY OF QUANTITIES
- 5. TYPICAL SECTIONS
- 6 - 8. SCHEDULES
- 9. TRAFFIC CONTROL AND PROTECTION, STANDARD 701400
- 10 - 11. CLASS A PATCHING DETAILS
- 12. PAVEMENT MARKING

STANDARDS

- 000001-08 STANDARD SYMBOLS, ABBREVIATIONS AND PATTERNS
- 001001-02 AREAS OF REINFORCEMENT BARS
- 001006 DECIMAL OF AN INCH AND OF A FOOT
- 701101-05 OFF-ROAD OPERATIONS, MULTILANE, 15' (4.5 m) TO 24" (600 mm) FROM PAVEMENT EDGE
- 701106-02 OFF-ROAD OPERATIONS, MULTILANE, MORE THAN 15' (4.5 m) AWAY
- 701401-12 LANE CLOSURE, FREEWAY/EXPRESSWAY
- 701411-09 LANE CLOSURE, MULTILANE, AT ENTRANCE OR EXIT RAMP FOR SPEEDS ≥ 45 MPH
- 701426-09 LANE CLOSURE, MULTILANE INTERMITTENT OR MOVING OPERATION, FOR SPEEDS ≥ 45 MPH
- 701428-01 TRAFFIC CONTROL, SETUP AND REMOVAL, FREEWAY/EXPRESSWAY
- 701901-08 TRAFFIC CONTROL DEVICES
- 420001-09
- 420701-03
- 780001-05

**STATE OF ILLINOIS
DEPARTMENT OF TRANSPORTATION**

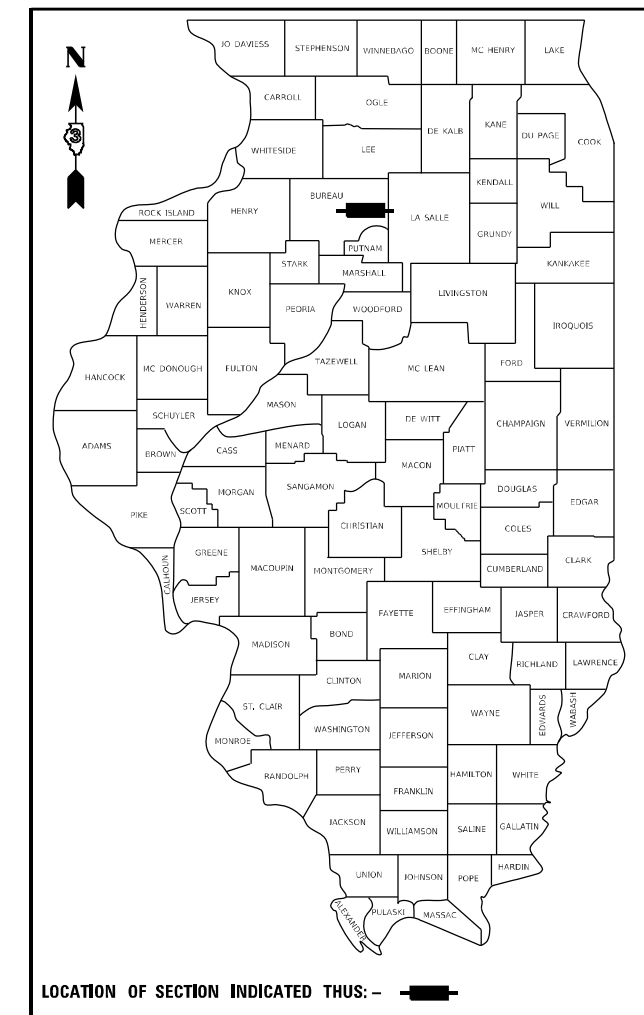
**PROPOSED
HIGHWAY PLANS**

**F.A.I. ROUTE 80 (I-80)
SECTION 06(6,7,8)PP
CLASS B PAVEMENT PATCHING
BUREAU COUNTY**

C-93-056-21

F.A.I. RTE.	SECTION	COUNTY	TOTAL SHEETS	SHEET NO.
80	06(6,7,8)PP	BUREAU	12	1
		ILLINOIS	CONTRACT NO. 66L60	

D-93-022-21



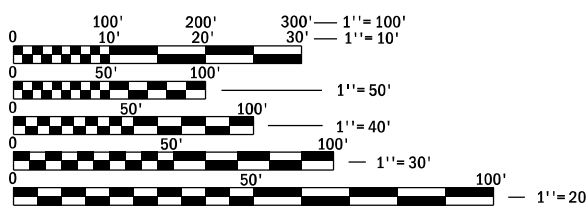
FUNCTIONAL CLASSIFICATION
RURAL/URBAN
INTERSTATE
F.A.I. ROUTE 80 (I-80)
2019 ADT = 23500
P.V. 58.6% S.U. 3.1% M.U. 38.3%

STATE OF ILLINOIS
DEPARTMENT OF TRANSPORTATION

SUBMITTED 3/23 2021
Masood Ahmad REGIONAL ENGINEER

May 7, 2021 [Signature]
ENGINEER OF DESIGN AND ENVIRONMENT

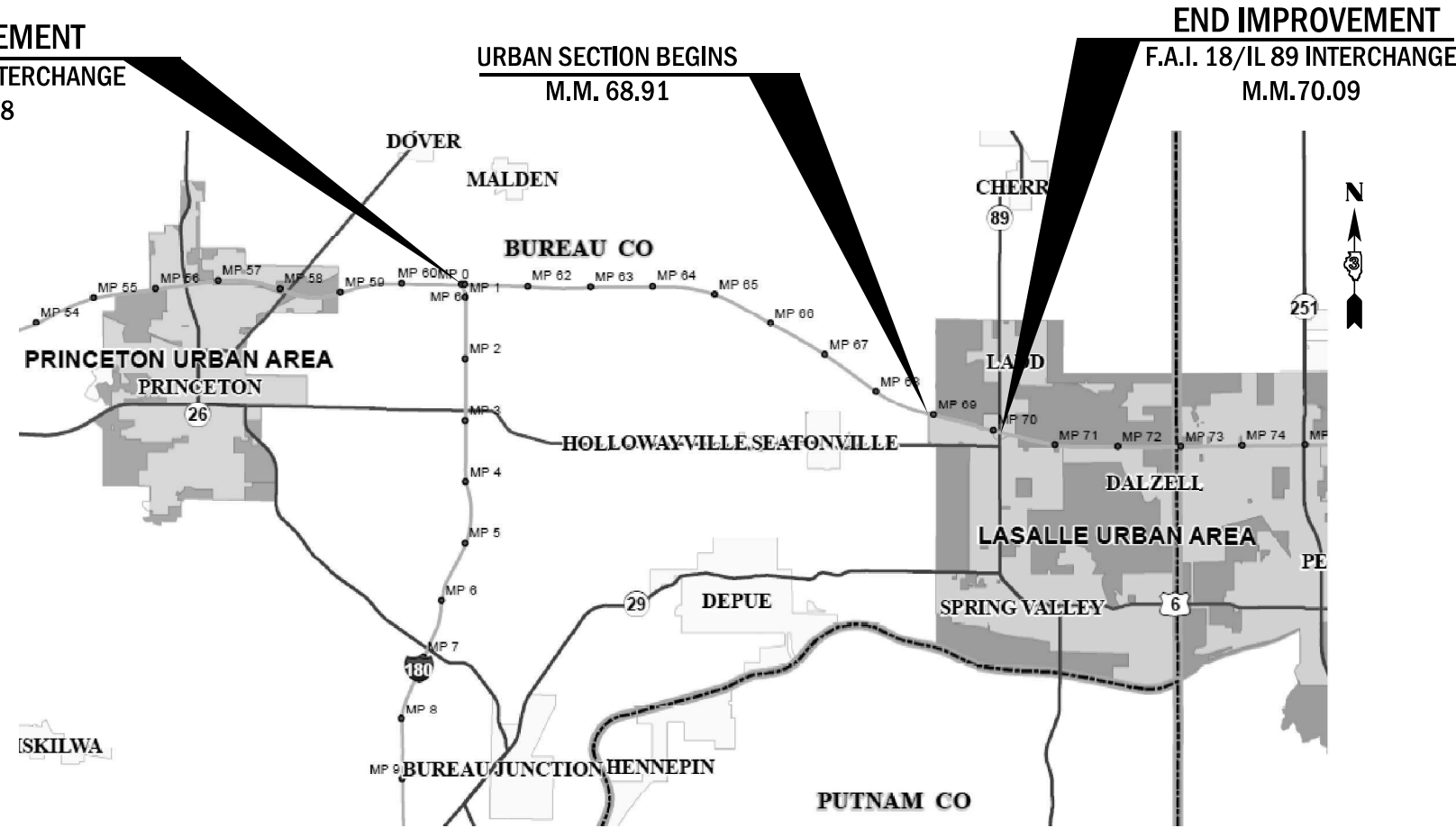
May 7, 2021 [Signature]
DIRECTOR OF HIGHWAYS PROJECT IMPLEMENTATION



FULL SIZE PLANS HAVE BEEN PREPARED USING STANDARD ENGINEERING SCALES. REDUCED SIZED PLANS WILL NOT CONFORM TO STANDARD SCALES. IN MAKING MEASUREMENTS ON REDUCED PLANS, THE ABOVE SCALES MAY BE USED.

J.U.L.I.E.
JOINT UTILITY LOCATION INFORMATION FOR EXCAVATORS
1-800-892-0123
OR 811

PROJECT ENGINEER: JOE KANNEL P.E.
UNIT CHIEF: RON WOODSHANK
DISTRICT 3 NO. (815) 434-6131
CONTRACT NO. 66L60



GROSS LENGTH = 48,259 FT. = 9.1 MILES
NET LENGTH = 525 FT. = 0.1 MILES

**PRINTED BY THE AUTHORITY
OF THE STATE OF ILLINOIS**

GENERAL NOTES

PLAN DIMENSIONS AND DETAILS RELATIVE TO EXISTING PLANS ARE SUBJECT TO NOMINAL CONSTRUCTION VARIATIONS. THE CONTRACTOR SHALL FIELD VERIFY EXISTING DIMENSIONS AND DETAILS AFFECTING NEW CONSTRUCTION AND MAKE NECESSARY APPROVED ADJUSTMENTS PRIOR TO CONSTRUCTION OR ORDERING OF MATERIALS. SUCH VARIATIONS SHALL NOT BE CAUSE FOR ADDITIONAL COMPENSATION FOR A CHANGE IN SCOPE OF WORK; HOWEVER, THE CONTRACTOR WILL BE PAID FOR THE QUANTITY ACTUALLY FURNISHED AT THE UNIT PRICE BID FOR THE WORK.

FOR STABILIZATION, ALL TYPE III BARRICADES WILL REQUIRE A MINIMUM OF FOUR SAND BAGS PER BARRICADE.

ALL EXCAVATED MATERIAL, WHICH INCLUDES DIGGING OR GRADING OF ANY SOIL OR FILL MATERIAL, WITH THE EXCEPTION OF AGGREGATE FILLS, MUST BE INCORPORATED WITHIN THE IDOT RIGHT OF WAY DUE TO ENVIRONMENTAL DOCUMENTATION REQUIREMENTS.

ANY REFERENCE TO A STANDARD IN THESE PLANS SHALL BE INTERPRETED TO MEAN THE EDITION AS INDICATED BY THE SUBNUMBER SHOWN IN THE LIST OF STANDARDS OR THE COPY INCLUDED IN THESE PLANS.

THE CONTRACTOR SHALL CONTACT JULIE AT LEAST 48 HOURS PRIOR TO EXCAVATION TO DETERMINE WHICH UTILITIES ARE IN THE AREA.

COMMITMENTS

STATE OF ILLINOIS
DEPARTMENT OF TRANSPORTATION
DISTRICT THREE
AS BUILT INFORMATION

SUPERVISING CONSTRUCTION FIELD ENGINEER

RESIDENT ENGINEER / TECHNICIAN

START & END DATES
OF CONSTRUCTION:

INSPECTORS:

STATE OF ILLINOIS
DEPARTMENT OF TRANSPORTATION
DISTRICT THREE

PREPARED BY: _____
DISTRICT STUDIES & PLANS ENGINEER

DATE: _____

EXAMINED BY: _____
DISTRICT CONSTRUCTION ENGINEER

DISTRICT MATERIALS ENGINEER

DISTRICT OPERATIONS ENGINEER

STATE OF ILLINOIS
DEPARTMENT OF TRANSPORTATION

GENERAL NOTES

SCALE: SHEET 1 OF 1 SHEETS STA. TO STA.

F.A.I. RTE.	SECTION	COUNTY	TOTAL SHEETS	SHEET NO.
80	06(6,7,8)PP	BUREAU	12	2
			CONTRACT NO. 66L60	
ILLINOIS FED. AID PROJECT				

MODEL: Default
FILE NAME: p:\pub\lhammon.dwt\illinois.gov\PWIDOT\Documents\IDOT_Offices\District 3\Projects\0366660\CADD\0366660_PLANS.dgn

USER NAME = woodshank1	DESIGNED - RW	REVISED -
	DRAWN - RW	REVISED -
PLOT SCALE = 100,0000 ' / in.	CHECKED - EM	REVISED -
PLOT DATE = 2/17/2021	DATE - 2/17/2021	REVISED -

CODE NO.	ITEM	UNIT	TOTAL QUANTITY	CONSTRUCTION CODE	
				CONTRACT MAINTENANCE 100% STATE	
				ROADWAY	ROADWAY
				0006	0006
				URBAN	RURAL
44200050	WELDED WIRE REINFORCEMENT	SQ YD	140		140
44201063	CLASS B PATCHES, TYPE II, 18 INCH	SQ YD	561	141	420
44201067	CLASS B PATCHES, TYPE III, 18 INCH	SQ YD	60		60
44201069	CLASS B PATCHES, TYPE IV, 18 INCH	SQ YD	80		80
44201299	DOWEL BARS 1 1/2"	EACH	1420	340	1080
44213200	SAW CUTS	FOOT	3606	824	2782
44213204	TIE BARS 3/4"	EACH	30		30
67100100	MOBILIZATION	L SUM	1	0.5	0.5
70100420	TRAFFIC CONTROL AND PROTECTION, STANDARD 701411	EACH	4	2	2
70100800	TRAFFIC CONTROL AND PROTECTION, STANDARD 701401	L SUM	1	0.5	0.5
70103815	TRAFFIC CONTROL SURVEILLANCE	CAL DA	10	2	8
70107025	CHANGEABLE MESSAGE SIGN	CAL DA	28	14	14
* 78008210	POLYUREA PAVEMENT MARKING TYPE I - LINE 4"	FOOT	530	110	420
* 78008230	POLYUREA PAVEMENT MARKING TYPE I - LINE 6"	FOOT	140	30	110

*= SPECIALTY ITEM

MODEL: Default
 FILE NAME: P:\p12000001\DOT Documents\DOT - Office\District 3\Project\03366160\CAD\03366160-PLANS.dgn

USER NAME = woodshankri	DESIGNED - RW	REVISED -	STATE OF ILLINOIS DEPARTMENT OF TRANSPORTATION	SUMMARY OF QUANTITIES			F.A.I. RTE.	SECTION	COUNTY	TOTAL SHEETS	SHEET NO.
PLOT SCALE = 100.0000' / in.	DRAWN - RW	REVISED -					80	06(6,7,8)PP	BUREAU	12	3
PLOT DATE = 2/17/2021	CHECKED - EM	REVISED +		SCALE:	SHEET 1 OF 2 SHEETS	STA.	TO STA.	CONTRACT NO. 66L60			
DATE = 2/17/2021	DATE = 2/17/2021	REVISED +							ILLINOIS FED. AID PROJECT		

CODE NO.	ITEM	UNIT	TOTAL QUANTITY	CONSTRUCTION CODE	
				CONTRACT MAINTENANCE 100% STATE	
				ROADWAY 0006 URBAN	ROADWAY 0006 RURAL
X2700001	TEMPORARY RUMBLE STRIPS (SPECIAL)	EACH	8	4	4

MODEL: Default
 FILE NAME: p:\pub\mroom.dwt\illinois.gov\PWIDOT\Documents\DOT_Offices\District 3\Projects\ID366.60\CADD\BID\366.60-PLAN.dgn

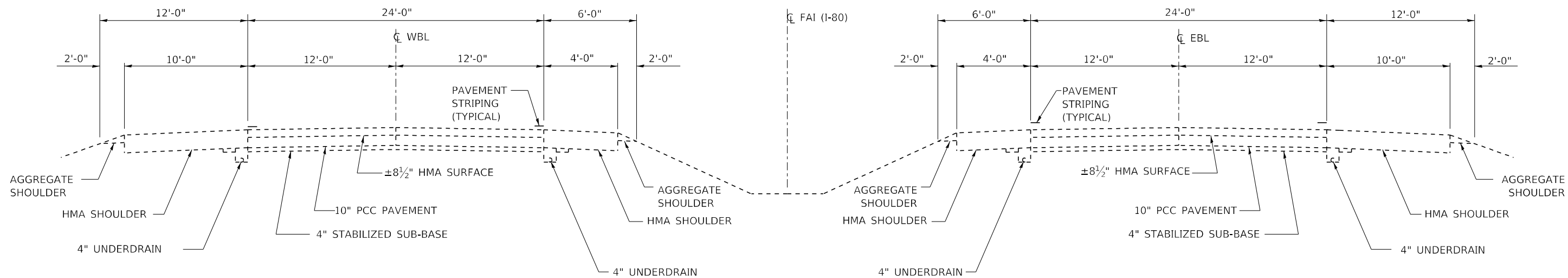
USER NAME = woodshank1	DESIGNED - RW	REVISED -
	DRAWN - RW	REVISED -
PLOT SCALE = 100,0000' / in.	CHECKED - EM	REVISED -
PLOT DATE = 2/17/2021	DATE - 2/17/2021	REVISED -

**STATE OF ILLINOIS
DEPARTMENT OF TRANSPORTATION**

SUMMARY OF QUANTITIES

SCALE: SHEET 2 OF 2 SHEETS STA. TO STA.

F.A.I. RTE.	SECTION	COUNTY	TOTAL SHEETS	SHEET NO.
80	06(6,7,8)PP	BUREAU	12	4
			CONTRACT NO. 66L60	
ILLINOIS FED. AID PROJECT				



TYPICAL SECTION
MM 60.95 TO MM 70.09
(BUREAU COUNTY)

MODEL: Default
 FILE NAME: p:\pub\mbarrom.dwg
 PROJECT: I-80
 OFFICE: District 3
 CONTRACT: 66L60
 SHEET: 5

USER NAME = woodshank1	DESIGNED - RW	REVISED -
	DRAWN - RW	REVISED -
PLOT SCALE = 100,0000 ' / in.	CHECKED - EM	REVISED -
PLOT DATE = 2/17/2021	DATE - 2/17/2021	REVISED -

**STATE OF ILLINOIS
DEPARTMENT OF TRANSPORTATION**

TYPICAL SECTIONS

SCALE: SHEET 1 OF 1 SHEETS STA. TO STA.

F.A.I. RTE.	SECTION	COUNTY	TOTAL SHEETS	SHEET NO.
80	06(6,7,8)PP	BUREAU	12	5
CONTRACT NO. 66L60				
ILLINOIS FED. AID PROJECT				

PATCHING SCHEDULE
WESTBOUND LANES - URBAN

LOCATION	PASSING LANE								DRIVING LANE							
	PATCH LENGTH	CLASS B			DOWEL BARS 1 1/2"	SAW CUTS FOOT	WELDED WIRE REINF. SQ YD	TIE BARS 3/4" EACH	PATCH LENGTH (FT)	CLASS B			DOWEL BARS 1 1/2" EACH	SAW CUTS FOOT	WELDED WIRE REINF. SQ YD	TIE BARS 3/4" EACH
		TYPE II 18"	TYPE III 18"	TYPE IV 18"						TYPE II 18"	TYPE III 18"	TYPE IV 18"				
MILE MARKER	(FT)	SQ YD	SQ YD	SQ YD	EACH	FOOT	SQ YD	EACH	(FT)	SQ YD	SQ YD	SQ YD	EACH	FOOT	SQ YD	EACH
70.0									6	8			20	48		
69.8									6	8			20	48		
69.7									6	8			20	48		
69.7	6	8			20	48										
69.7									6	8			20	48		
69.2									6	8			20	48		
69.1									10	13			20	56		
SUBTOTAL	6	8			20	48			40	53			120	296		
TOTAL	46	61			140	344										

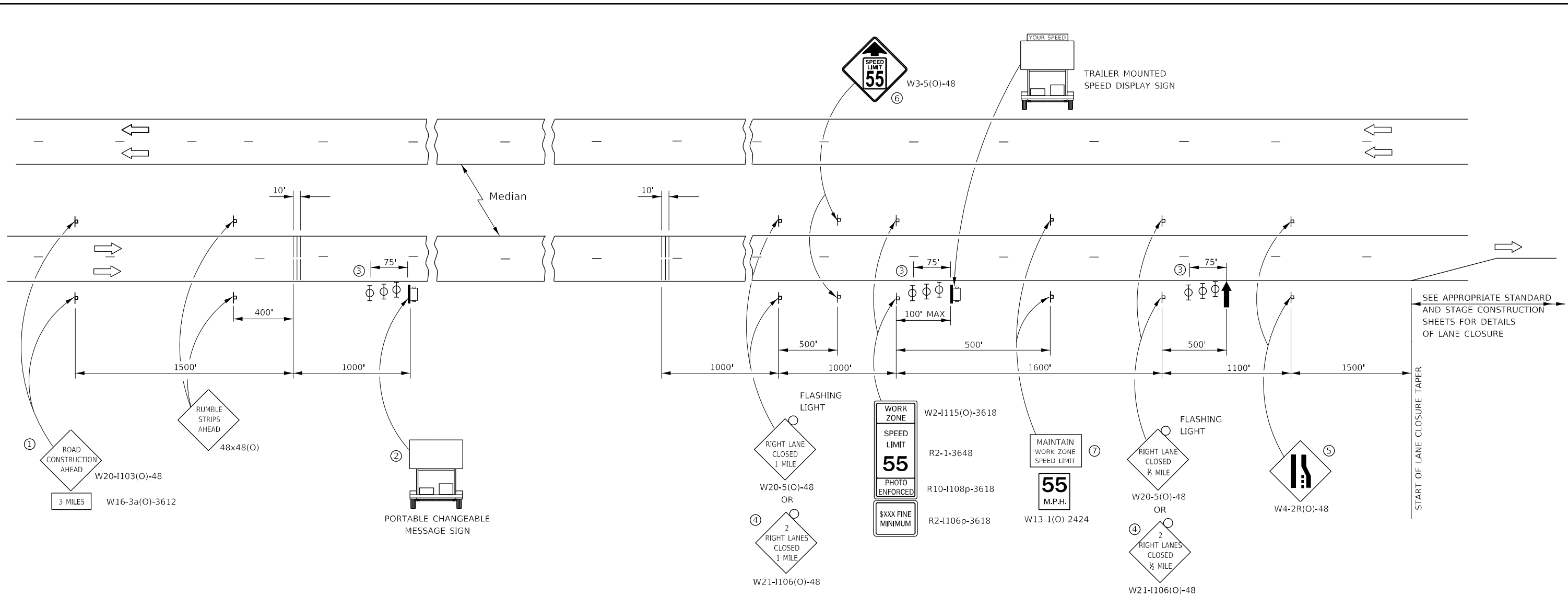
MODEL: Default
 FILE NAME: \\paulamr.com\data\illinois\pwr\PROJECTS\DOT Documents\DOT Office\District 3\Projects\0366660\CADD\0366660\PLAN\60.LANS.dgn

USER NAME = woodshank1	DESIGNED - RW	REVISED -
	DRAWN - RW	REVISED -
PLOT SCALE = 100,0000' / in.	CHECKED - EM	REVISED -
PLOT DATE = 2/17/2021	DATE - 2/17/2021	REVISED -

**STATE OF ILLINOIS
DEPARTMENT OF TRANSPORTATION**

SCHEDULES	
SCALE:	SHEET 1 OF 1 SHEETS STA. TO STA.

F.A.I. RTE.	SECTION	COUNTY	TOTAL SHEETS	SHEET NO.
80	06(6,7,8)PP	BUREAU	12	7
			CONTRACT NO. 66L60	
ILLINOIS FED. AID PROJECT				



SYMBOLS

- ARROW BOARD
- PORTABLE CHANGEABLE MESSAGE SIGN
- SIGN
- TYPE II BARRICADE, DRUM, OR VERTICAL BARRICADE WITH MONODIRECTIONAL FLASHING LIGHT
- TEMPORARY RUMBLE STRIPS (SEE SPECIAL PROVISION)

- ① THE ROAD CONSTRUCTION AHEAD SIGN SHALL BE LOCATED 3 MILES IN ADVANCE OF THE PROJECT LIMITS.
- ② TO BE PLACED IN THE MEDIAN WHEN FEASIBLE. THE MESSAGE BOARD SHALL BE USED TO DISPLAY STATUS OF LANES WITHIN THE PROJECT. THE PRIMARY MESSAGES SHALL BE:
"RIGHT LANE CLOSED" / " x MILES AHEAD"
"LEFT LANE CLOSED" / " x MILES AHEAD"
"ALL LANES OPEN"
- ③ THREE, TYPE II BARRICADES, DRUMS, OR VERTICAL BARRICADES AT 25' CENTERS.
- ④ THIS SIGN SHALL BE USED WHEN 2 LANES ARE CLOSED.
- ⑤ WHEN THE LEFT LANE IS CLOSED, SWITCH THESE TWO SIGNS AND THE DIRECTION OF THE MERGE ARROW.
- ⑥ THIS SIGN SHALL ONLY BE USED IF THE EXISTING SPEED LIMIT IS GREATER THAN 65 MPH.

- ⑦ 48"x36" FLUORESCENT ORANGE SIGN WITH BLACK LETTERS.
48"
36" MAINTAIN WORK ZONE SPEED LIMIT 8" 6" 6"
COST OF THIS ADDITIONAL SIGN SHALL BE INCLUDED IN THIS STANDARD

GENERAL NOTE:

THIS STANDARD IS USED WHERE AT ANY TIME A LANE IS CLOSED ON A FREEWAY/EXPRESSWAY. WHEN THE LEFT LANE IS CLOSED, LEFT LANE CLOSED SIGNS SHALL BE SUBSTITUTED FOR THE RIGHT LAND CLOSED SIGNS.

THE FIRST TWO SIGNS, BOTH SETS OF RUMBLE STRIPS AND MESSAGE BOARD ARE STATIONARY.

THE LAST FIVE SIGNS AND ARROW BOARD SHALL BE MOVED AS NECESSARY TO MAINTAIN THE REQUIRED DISTANCE FROM THE START OF THE LANE CLOSURE TAPER(S).

MODEL: Default
 FILE NAME: \\pilot\lanonm.dot\illinois.gov\PIWDOT\Documents\DOT_Offices\District_3\Projects\0366660\CD000001\0366660_PLANS.dgn

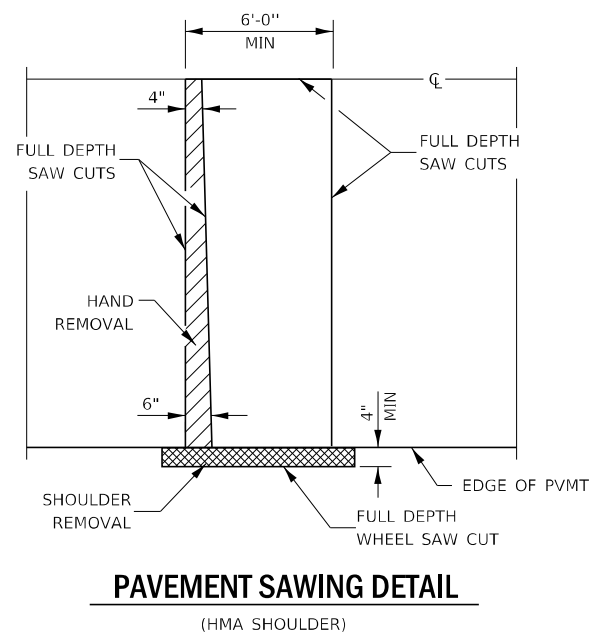
USER NAME = woodshank1	DESIGNED - RW	REVISED -
	DRAWN - RW	REVISED -
PLOT SCALE = 100,000' / in.	CHECKED - EM	REVISED -
PLOT DATE = 2/17/2021	DATE - 2/17/2021	REVISED -

**STATE OF ILLINOIS
DEPARTMENT OF TRANSPORTATION**

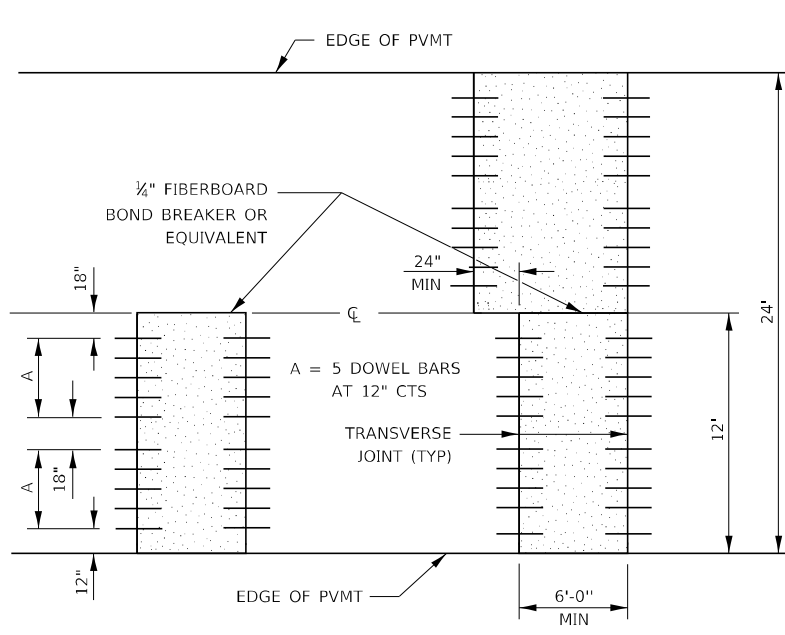
TRAFFIC CONTROL AND PROTECTION, STANDARD 701400

SCALE: SHEET 1 OF 1 SHEETS STA. TO STA.

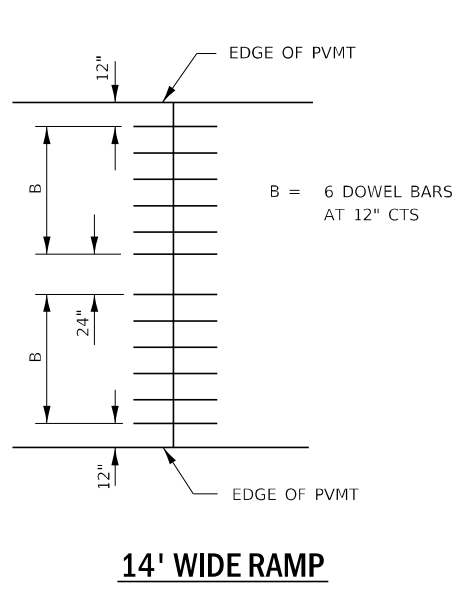
F.A.I. RTE.	SECTION	COUNTY	TOTAL SHEETS	SHEET NO.
80	06(6,7,8)PP	BUREAU	12	9
			CONTRACT NO. 66L60	
ILLINOIS FED. AID PROJECT				



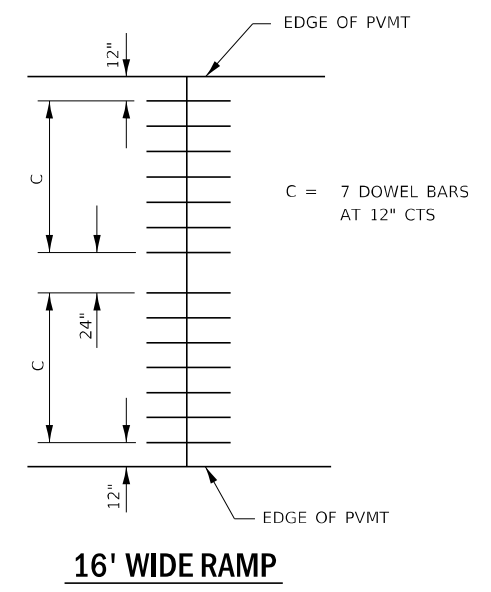
PAVEMENT SAWING DETAIL
(HMA SHOULDER)



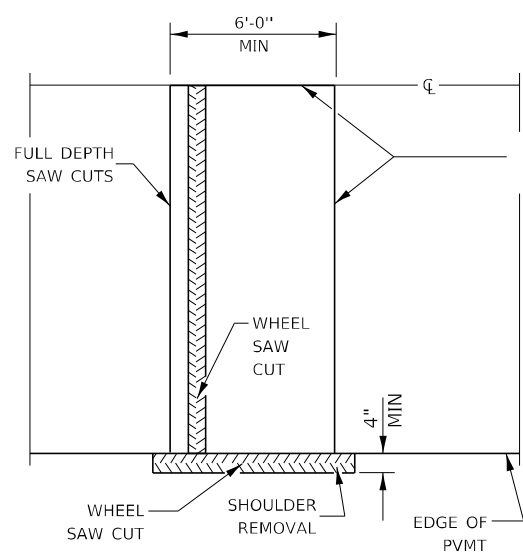
12' WIDE LANES



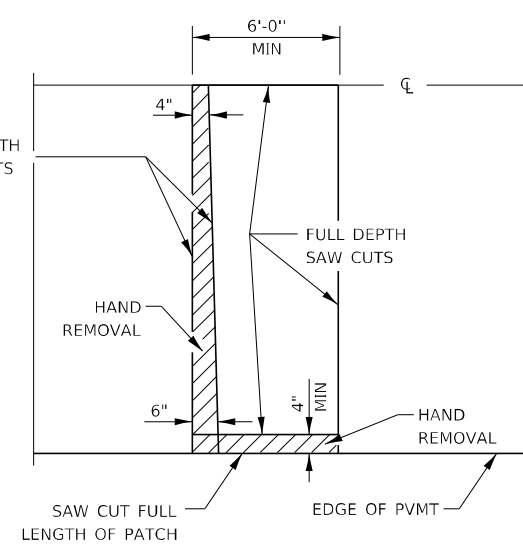
14' WIDE RAMP



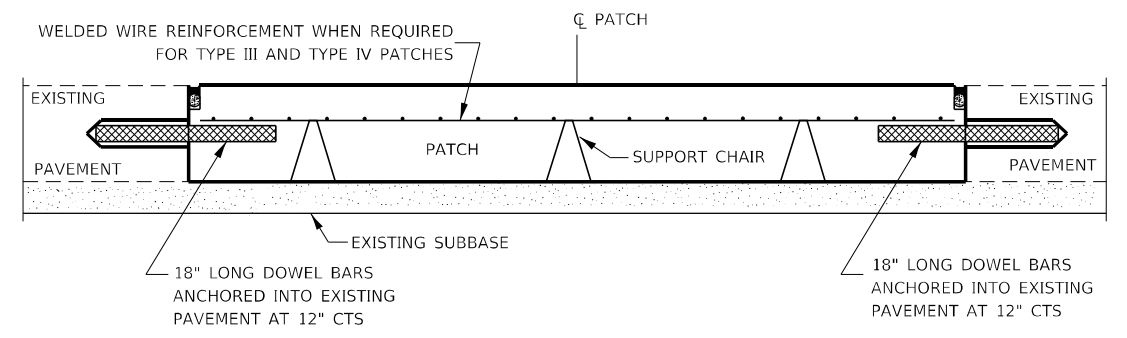
16' WIDE RAMP



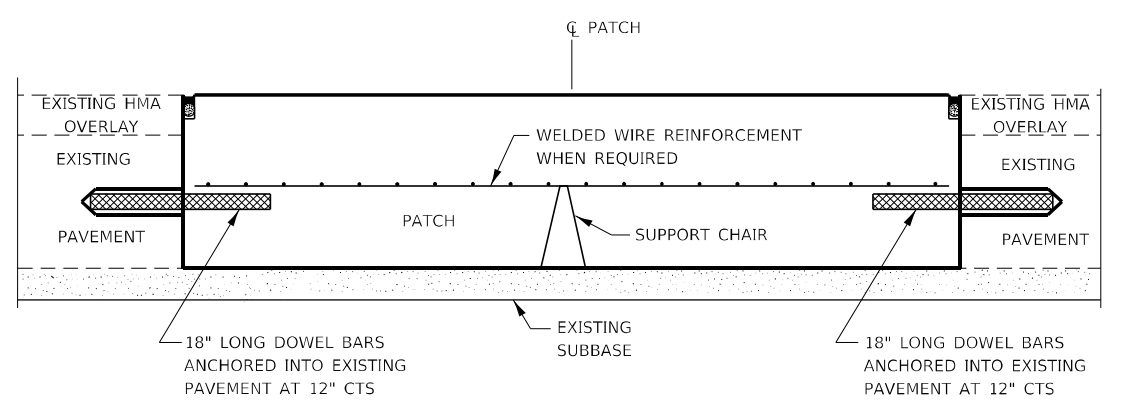
ALTERNATE SAWING DETAIL
(HMA SHOULDER)



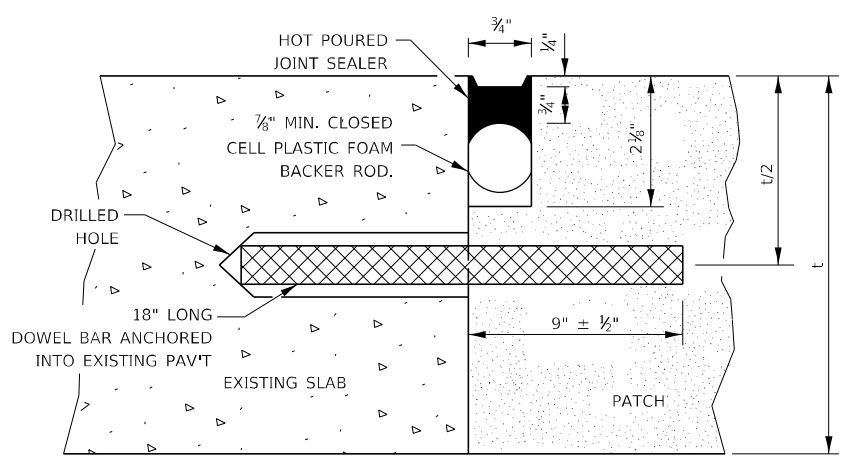
PAVEMENT SAWING DETAIL
(PCC SHOULDER)



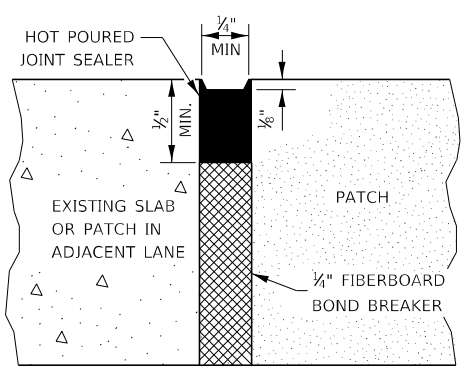
PATCHING WITHOUT HMA OVERLAY



PATCHING WITH HMA OVERLAY



TRANSVERSE JOINT



CENTERLINE JOINT

DOWEL BAR TABLE		
PAVEMENT THICKNESS	DOWEL BAR DIAMETER	HOLE DIAMETER
8" OR GREATER	1 1/2"	1 3/8"
7" THRU 7.99"	1 1/4"	1 3/8"
LESS THAN 7"	1"	1 1/8"

GENERAL NOTES

THE TRANSVERSE JOINTS FOR CLASS B PATCHES SHALL ALIGN WITH JOINTS OR CRACKS IN THE ADJACENT LANE WHENEVER POSSIBLE.
SEE STANDARD 420701 FOR DETAILS OF PAVEMENT WELDED WIRE REINFORCEMENT.

MODEL: Default
FILE NAME: p:\projects\66L60\Drawings\DOT Office\66L60\66L60-PLANS.dwg
PROJECT: 66L60-PLANS.dwg
DATE: 2/17/2021

USER NAME = woodshank1	DESIGNED - RW	REVISED -
PLOT SCALE = 100,0000' / in.	DRAWN - RW	REVISED -
PLOT DATE = 2/17/2021	CHECKED - EM	REVISED -
	DATE - 2/17/2021	REVISED -

STATE OF ILLINOIS
DEPARTMENT OF TRANSPORTATION

CLASS B PATCHING

SCALE: SHEET 1 OF 1 SHEETS STA. TO STA.

F.A.I. RTE.	SECTION	COUNTY	TOTAL SHEETS	SHEET NO.
80	06(6,7,8)PP	BUREAU	12	10
CONTRACT NO. 66L60				
ILLINOIS FED. AID PROJECT				

