

STATE OF ILLINOIS  
DEPARTMENT OF TRANSPORTATION

F.A.P. RTE.	SECTION	COUNTY	TOTAL SHEETS	SHEET NO.
335	2021-032-R5	LAKE	29	1
CONTRACT NO. 62N82				

\* 29 + 1 = 30 TOTAL SHEETS

D-91-132-21



FOR INDEX OF SHEETS, SEE SHEET NO. 2

THIS IMPROVEMENT IS LOCATED  
IN THE VILLAGE OF METTAWA

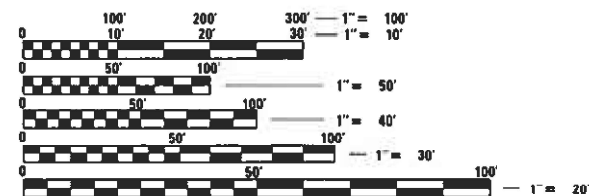
TRAFFIC DATA

EXISTING ADT = 34400 (2019)  
POSTED SPEED LIMIT = 45 MPH

PROPOSED  
HIGHWAY PLANS

FAP ROUTE 335: IL-60 (TOWNLINE RD.)  
EAST OF DES PLAINES RIVER TO RIVERWOODS RD  
SECTION 2021-032-R5  
PROJECT NHPP-76DK(276)  
DESIGNED OVERLAY, STANDARD OVERLAY,  
& ADA IMPROVEMENTS  
LAKE COUNTY

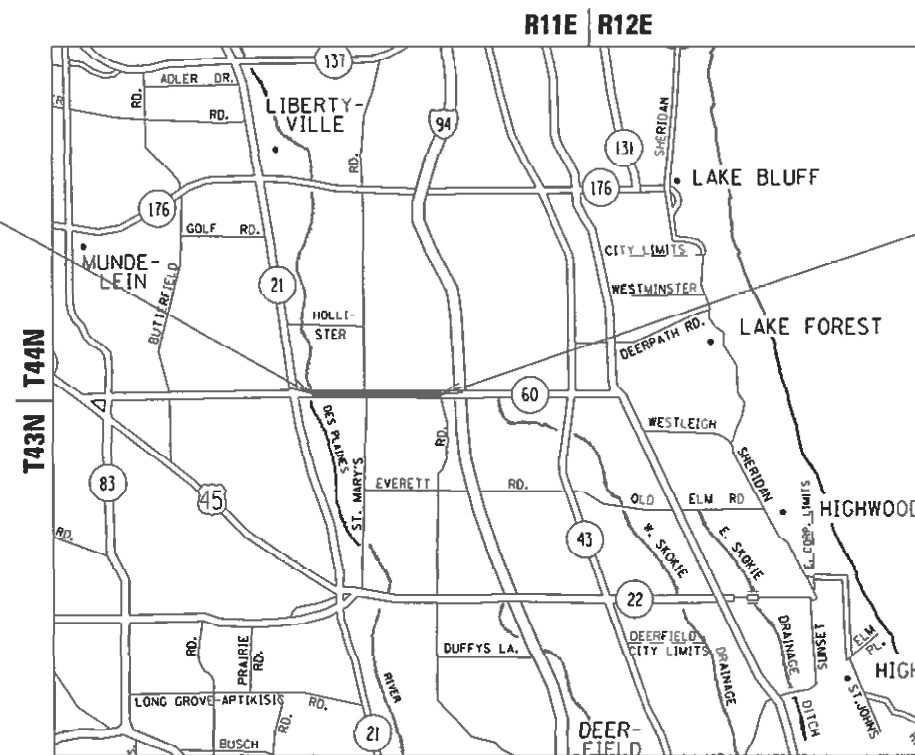
C-91-155-21



FULL SIZE PLANS HAVE BEEN PREPARED USING STANDARD  
ENGINEERING SCALES. REDUCED SIZED PLANS WILL NOT  
CONFORM TO STANDARD SCALES. IN MAKING MEASUREMENTS  
ON REDUCED PLANS, THE ABOVE SCALES MAY BE USED.

J.U.L.I.E.  
JOINT UTILITY LOCATION INFORMATION FOR EXCAVATORS  
1-800-892-0123  
OR 811

IMPROVEMENT BEGINS  
STA 36 + 65



IMPROVEMENT ENDS  
STA 127 + 37

LIBERTYVILLE AND VERNON TOWNSHIPS

GROSS LENGTH = 9072 FT. = 1.718 MILE  
NET LENGTH = 9072 FT. = 1.718 MILE

PROJECT MANAGER: J. ALAIN MIDY (847) 221-3056

CONTRACT NO. 62N82

STATE OF ILLINOIS  
DEPARTMENT OF TRANSPORTATION

SUBMITTED MARCH 9 20 21  
Open Pios / CAS REGIONAL ENGINEER

May 7, 2021 [Signature]  
ENGINEER OF DESIGN AND ENVIRONMENT

May 7, 2021 [Signature]  
DIRECTOR OF HIGHWAYS PROJECT IMPLEMENTATION

PRINTED BY THE AUTHORITY  
OF THE STATE OF ILLINOIS

**STATE STANDARDS**

**INDEX OF SHEETS**

1	COVER SHEET
2	INDEX OF SHEETS, STATE STANDARDS & GENERAL NOTES
3-5	SUMMARY OF QUANTITIES
6-8	EXISTING AND PROPOSED TYPICAL SECTIONS
9-12	ROADWAY PLAN
13-15	DETECTOR LOOP REPLACEMENT PLANS
16-17	DELETED
18	DETAILS FOR FRAMES AND LIDS ADJUSTMENT WITH MILLING (BD-08)
19	PAVEMENT PATCHING FOR HMA SURFACED PAVEMENT (BD-22)
20	CURB OR CURB AND GUTTER REMOVAL AND REPLACEMENT (BD-24)
21	BUTT JOINT AND HMA TAPER DETAILS (BD-32)
22	HMA TAPER AT EDGE OF P.C.C. PAVEMENT (BD-33)
23	TRAFFIC CONTROL AND PROTECTION FOR SIDE ROADS, INTERSECTIONS, AND DRIVEWAYS (TC-10)
24	TYPICAL APPLICATIONS RAISED REFLECTIVE PAVEMENT MARKERS (SNOW PLOW RESISTANT) (TC-11)
25	DISTRICT ONE TYPICAL PAVEMENT MARKINGS (TC-13)
26	TRAFFIC CONTROL AND PROTECTION AT TURN BAYS (TO REMAIN OPEN TO TRAFFIC) (TC-14)
27	SHORT TERM PAVEMENT MARKING LETTERS AND SYMBOLS (TC-16)
28	ARTERIAL ROAD INFORMATION SIGN (TC-22)
29	DRIVEWAY ENTRANCE SIGNING (TC-26)
29A	DISTRICT 1 - DETECTOR LOOP INSTALLATION DETAILS FOR ROADWAY RESURFACING (TS-07)

**STANDARD NO.**

**DESCRIPTION**

000001-08	STANDARD SYMBOLS, ABBREVIATIONS AND PATTERNS
424011-04	CORNER PARALLEL CURB RAMPS FOR SIDEWALKS
424021-06	DEPRESSED CORNER FOR SIDEWALKS
442201-03	CLASS C AND D PATCHES
701101-05	OFF-ROAD OPERATIONS, MULTILANE, 15' (4.5 M) TO 24" (600 MM) FROM PAVEMENT EDGE
701426-09	LANE CLOSURE, MULTILANE, INTERMITTENT OR MOVING OPER., FOR SPEEDS ≥ 45 MPH
701601-09	URBAN LANE CLOSURE, MULTILANE, 1W OR 2W WITH NONTRAVERSABLE MEDIAN
701602-10	URBAN LANE CLOSURE, MULTILANE, 2W WITH BIDIRECTIONAL TURN LANE
701606-10	URBAN SINGLE LANE CLOSURE, MULTILANE, 2W WITH MOUNTABLE MEDIAN
701701-10	URBAN LANE CLOSURE, MULTILANE INTERSECTION
701801-06	SIDEWALK, CORNER OR CROSSWALK CLOSURE
701901-08	TRAFFIC CONTROL DEVICES

**GENERAL NOTES**

1. BEFORE STARTING ANY EXCAVATION, THE CONTRACTOR SHALL CALL J.U.L.I.E. AT 1-800-892-0123, OR 811 FOR FIELD LOCATIONS OF BURIED ELECTRIC, TELEPHONE AND GAS UTILITIES. 48 HOUR NOTIFICATION IS REQUIRED.
2. TEN (10) FOOT TRANSITIONS SHALL BE USED TO MATCH PROPOSED CURB AND GUTTER AND MEDIAN ITEMS OF WORK TO EXISTING CURBS AND GUTTER AND MEDIANS IN THE FIELD, UNLESS OTHERWISE SHOWN. THE TRANSITIONS SHALL BE PAID FOR AT THE CONTRACT UNIT PRICE FOR THE PROPOSED ITEMS OF WORK SPECIFIED.
3. THE CONTRACTOR SHALL COORDINATE CONSTRUCTION ACTIVITIES WITH UTILITY COMPANIES, AND AND VILLAGE OF METTAWA.
4. THE CONTRACTOR WILL NOT BE ALLOWED TO SET UP A YARD OR FIELD OFFICE ON STATE PROPERTY WITHOUT WRITTEN PERMISSION FROM THE DEPARTMENT.
5. ANY PAVEMENT MARKINGS AND RAISED REFLECTIVE PAVEMENT MARKERS OBLITERATED BY MILLING AND RESURFACING OPERATIONS ON SIDE STREETS AND ENTRANCES SHALL BE REPLACED AND PAID FOR IN KIND.
6. ALL DAMAGE TO EXISTING PAVEMENT MARKINGS OR RAISED REFLECTIVE PAVEMENT MARKERS OUTSIDE THE REMOVAL LINE SHOWN ON THE PLANS SHALL BE REPLACED AT NO ADDITIONAL COST TO THE DEPARTMENT.
7. BEFORE BEGINNING ANY WORK, THE CONTRACTOR SHALL RETAIN AND RECORD FOR FUTURE REFERENCE, ALL EXISTING PAVEMENT MARKING LINES (AND RAISED REFLECTIVE PAVEMENT MARKERS) IN ORDER THAT THESE LOCATIONS CAN BE RE-ESTABLISHED FOR STRIPING. EXACT LOCATIONS OF ALL PAVEMENT MARKINGS SHALL BE AS DIRECTED BY THE ENGINEER.
8. ALL PAVEMENT PATCHING LOCATIONS WILL BE DETERMINED IN THE FIELD BY THE ENGINEER.
9. LOCATION OF COMBINATION CONCRETE CURB AND GUTTER REMOVAL AND REPLACEMENT (OR COMBINATION CURB AND GUTTER), WILL BE DETERMINED IN THE FIELD BY THE ENGINEER.
10. DRAINAGE ADJUSTMENT OR RECONSTRUCTION LOCATIONS WILL BE DETERMINED IN THE FIELD BY THE ENGINEER.
11. IT SHALL BE THE CONTRACTOR'S RESPONSIBILITY TO VERIFY ALL DIMENSIONS AND CONDITIONS EXISTING IN THE FIELD PRIOR TO CONSTRUCTION AND ORDERING OF MATERIALS.
12. FRAMES AND GRATES ADJUSTMENT OF PRIVATE UTILITIES WITHIN THE LIMITS OF THE IMPROVEMENTS SHALL BE DONE BY THEIR RESPECTIVE OWNERS AND ARE NOT PART OF THIS CONTRACT.
13. THE CONTRACTOR SHALL CONTACT THE DISTRICT ONE TRAFFIC CONTROL SUPERVISOR AT KALPANA.KANNAN-HOSADURGA@ILLINOIS.GOV A MINIMUM OF 72 HOURS IN ADVANCE OF BEGINNING WORK.
14. THE RESIDENT ENGINEER SHALL CONTACT WALTER CZARNY, AREA TRAFFIC FIELD ENGINEER, AT WALTER.CZARNY@ILLINOIS.GOV A MINIMUM OF TWO (2) WEEKS PRIOR TO THE PLACEMENT OF PERMANENT PAVEMENT MARKINGS.
15. THESE PLANS HAVE BEEN PREPARED FROM NOTES RECEIVED FROM THE BUREAU OF CONSTRUCTION.
16. THE THICKNESS OF THE HMA MIXTURE SHOWN ON THE PLANS IS THE NOMINAL THICKNESS. DEVIATIONS FROM THE NOMINAL THICKNESS WILL BE PERMITTED WHEN SUCH DEVIATIONS OCCUR DUE TO IRREGULARITIES IN THE EXISTING SURFACE OR BASE ON WHICH THE HMA MIXTURE IS PLACED.
17. THE CONTRACTOR SHALL BE REQUIRED TO PROVIDE ACCESS TO ABUTTING PROPERTY AT ALL TIMES DURING THE CONSTRUCTION OF THIS PROJECT.
18. THE CONTRACTOR WILL BE REQUIRED TO KEEP A RECORD OF THE LOCATIONS OF PLATED STRUCTURES BY STATION AND OFFSET LEFT OR RIGHT OF THE CENTERLINE OF PAVEMENT.
19. EXISTING BROKEN FRAMES AND LIDS SHALL BE REMOVED AND DISPOSED OF BY THE CONTRACTOR AND SHALL BE REPLACED AS DIRECTED BY THE ENGINEER. REPLACEMENT FRAMES AND LIDS WILL BE PAID FOR ACCORDING TO ARTICLE 109.04 OF THE STANDARD SPECIFICATIONS UNLESS A SEPARATE PAY ITEM HAS BEEN PROVIDED.
20. FOR FRAMES AND LIDS ADJUSTMENT WITHOUT MILLING, REUSE EXISTING FRAME AND LID UNLESS OTHERWISE SPECIFIED IN THE PLANS.
21. DO NOT SCALE PLANS FOR CONSTRUCTION DIMENSIONS.
22. DOUBLE LANE MARKERS ARE TO BE USED AS SHOWN ON THE DISTRICT ONE DETAIL "TYPICAL APPLICATIONS RAISED REFLECTIVE PAVEMENT MARKERS (SNOW-PLOW RESISTANT)" SHOWN IN THE PLANS.
23. PAVEMENT MARKING TAPE, TYPE III SHALL BE USED FOR SHORT TERM PAVEMENT MARKINGS ON ALL FINAL SURFACES.
24. WHEN THE MILLED PAVEMENT IS OPEN TO TRAFFIC THE MAXIMUM GRADE DIFFERENTIAL BETWEEN PASSES OF THE MILLING MACHINE SHALL NOT EXCEED 1 1/2 INCHES (40 mm) WHERE THE SPEED LIMIT IS 40 MPH (80 km/h) OR LESS AND 1 INCH (25 mm) WHERE THE SPEED LIMIT IS GREATER THAN 40 MPH (80 km/h). WITH WRITTEN APPROVAL OF THE ENGINEER, A MAXIMUM GRADE DIFFERENTIAL OF 3 INCHES (75 mm) MAY BE ALLOWED IF THE EDGE OF THE MILLING IS SLOPED A MINIMUM 1:3 (V:H) OR A NOTCHED LONGITUDINAL WEDGE IS USED.
25. BUTT JOINTS WILL BE INSTALLED AT THE ENDS OF ALL RESURFACING (WHERE RESURFACING MEETS EXISTING PAVEMENT) ACCORDING TO THE "BUTT JOINT AND HOT-MIX ASPHALT TAPER DETAILS" SHEET INCLUDED IN THE PLANS, UNLESS OTHERWISE SPECIFIED.
26. OVERNIGHT LANE CLOSURES SHALL NOT BE ALLOWED FOR REHABILITATION PROJECTS INVOLVING DAYTIME MILLING AND RESURFACING OPERATIONS AND CLASS D PATCHING UNLESS OTHER CONDITIONS WARRANT EXTENDED LANE CLOSURES AS DETERMINED AND APPROVED IN WRITING BY THE ENGINEER OR AS PROVIDED FOR IN THE CONTRACT SPECIFICATIONS.

MODEL: Default  
 FILE: Main: P:\g\l\lroom.dat\illinois.gov\FWID\DOT\Documents\IBDOT\_Offices\District\_1\Project\ID113221\CADData\Design\ID113221-ent-general.dgn

USER NAME = dumachia	DESIGNED -	REVISED -	<b>STATE OF ILLINOIS DEPARTMENT OF TRANSPORTATION</b>	<b>INDEX OF SHEETS, STATE STANDARDS, AND GENERAL NOTES</b>	F.A.P. RTE.	SECTION	COUNTY	TOTAL SHEETS	SHEET NO.
DRAWN -	REVISED -	335			2021-032-R5	LAKE	29	2	
PLOT SCALE = 100.0000' / in.	CHECKED -	REVISED -			CONTRACT NO. 62N82				
PLOT DATE = 4/19/2021	DATE -	REVISED -			SCALE:	SHEET 1 OF 1 SHEETS	STA.	TO STA.	ILLINOIS FED. AID PROJECT





SUMMARY OF QUANTITIES			URBAN TOTAL QUANTITIES	CONSTRUCTION TYPE CODE				
CODE NO	ITEM	UNIT		0005 20% STATE 80% FED	0005 100% STATE			
* 78000500	THERMOPLASTIC PAVEMENT MARKING - LINE 8"	FOOT	92	92				
* 78000600	THERMOPLASTIC PAVEMENT MARKING - LINE 12"	FOOT	1413	1413				
* 78000650	THERMOPLASTIC PAVEMENT MARKING - LINE 24"	FOOT	425	425				
* 78100100	RAISED REFLECTIVE PAVEMENT MARKER	EACH	1202	1202				
78300200	RAISED REFLECTIVE PAVEMENT MARKER REMOVAL	EACH	1202	1202				
85000200	MAINTENANCE OF EXISTING TRAFFIC SIGNAL INSTALLATION	EACH	1	1				
* 88600600	DETECTOR LOOP REPLACEMENT	FOOT	1738	1738				
* 89502376	REBUILD EXISTING HANDHOLE	EACH	4	4				
X0320050	CONSTRUCTION LAYOUT (SPECIAL)	L SUM	1	1				
X4400100	PORTLAND CEMENT CONCRETE SURFACE REMOVAL (VARIABLE DEPTH)	SQ YD	3142	3142				
X4400500	COMBINATION CURB AND GUTTER REMOVAL (SPECIAL)	FOOT	200	200				
△ X5537800	STORM SEWERS TO BE CLEANED 12"	FOOT	1250		1250			
X6030310	FRAMES AND LIDS TO BE ADJUSTED (SPECIAL)	EACH	20	20				

SUMMARY OF QUANTITIES			URBAN TOTAL QUANTITIES	CONSTRUCTION TYPE CODE				
CODE NO	ITEM	UNIT		0005 20% STATE 80% FED	0005 100% STATE			
X7030005	TEMPORARY PAVEMENT MARKING REMOVAL	SO FT	16047	16047				
Z0004562	COMBINATION CONCRETE CURB AND GUTTER REMOVAL AND REPLACEMENT	FOOT	1200	1200				
Z0030850	TEMPORARY INFORMATION SIGNING	SO FT	103	103				
Z0033700	LONGITUDINAL JOINT SEALANT	FOOT	30910	30910				
∅ Z0076600	TRAINEES	HOURS	500	500				
∅ Z0076604	TRAINEES - TRAINING PROGRAM GRADUATE	HOURS	500	500				

FILE NAME =	USER NAME = dumachia	DESIGNED -	REVISED -
p:\planning\room\dtd\illinois\gov\PI\001\Documents\DOT	Offices\District\Projects\DI\322\NCAD\Design\DI\322\st	DRAWN -	REVISED -
		CHECKED -	REVISED -
		DATE -	REVISED -

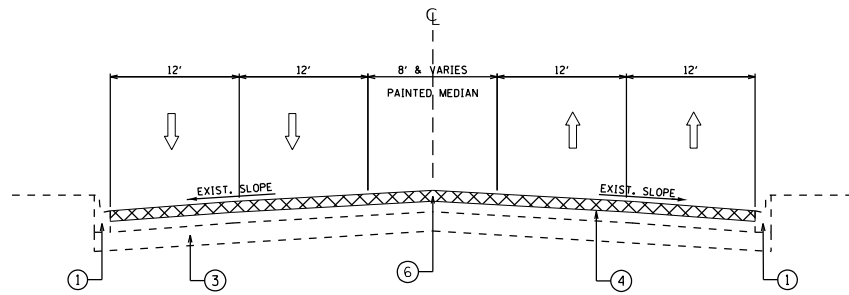
**STATE OF ILLINOIS  
DEPARTMENT OF TRANSPORTATION**

**IL 60 (TOWNLIN RD) - E OF DES PLAINES RIVER TO RIVERWOODS RD**  
**SUMMARY OF QUANTITIES**

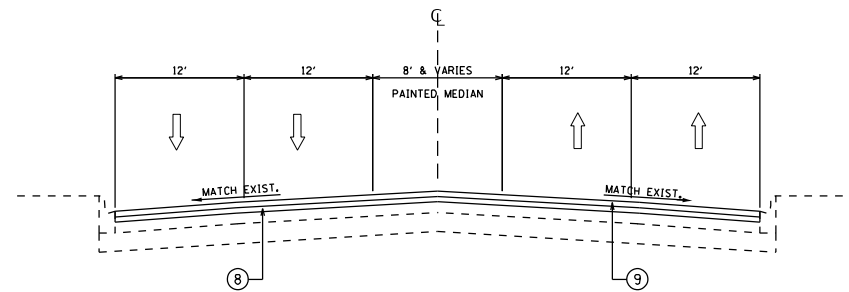
F.A.P. RTE.	SECTION	COUNTY	TOTAL SHEETS	SHEET NO.
335	2021-032-RS	LAKE	29	5
SCALE: SHEET NO. 3 OF 3 SHEETS STA. TO STA.			CONTRACT NO. 62N82	
FED. ROAD DIST. NO. 1 (ILLINOIS) FED. AID PROJECT				

\* = SPECIALTY ITEMS      △ = NON-PARTICIPATING ITEMS

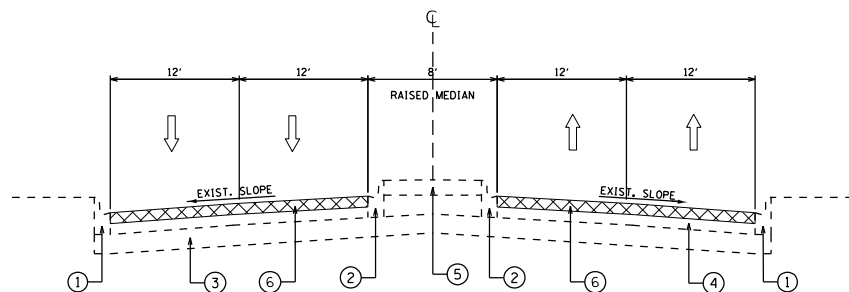
0042      REV-SEP



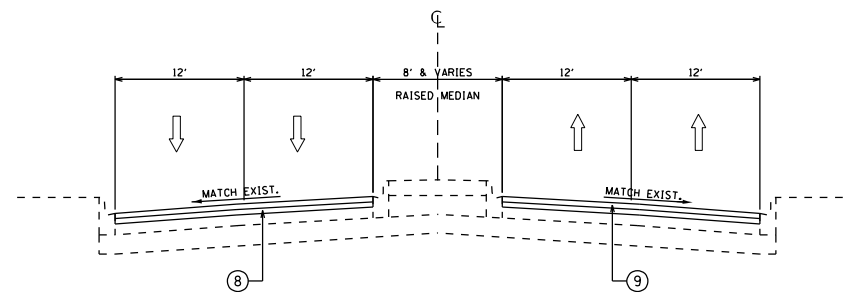
**IL-60 (TOWNLINE RD)**  
**EXISTING TYPICAL SECTION**  
 STA 36+34 TO STA 67+95  
 STA 79+00 TO STA 92+52  
 STA 109+62 TO STA 115+15



**IL-60 (TOWNLINE RD)**  
**PROPOSED TYPICAL SECTION**  
 STA 36+34 TO STA 67+95  
 STA 79+00 TO STA 92+52  
 STA 109+62 TO STA 115+15



**IL-60 (TOWNLINE RD)**  
**EXISTING TYPICAL SECTION**  
 STA 92+52 TO STA 109+62



**IL-60 (TOWNLINE RD)**  
**PROPOSED TYPICAL SECTION**  
 STA 92+52 TO STA 109+62

**LEGEND**

- ① EXISTING COMB. CONC. CURB AND GUTTER, B-6.24
- ② EXISTING COMB. CONC. CURB AND GUTTER, B-6.12
- ③ EXISTING BITUMINOUS BASE COURSE, ± 12"
- ④ EXISTING H.M.A. SURFACE COURSE, ± 4"
- ⑤ EXISTING RAISED MEDIAN
- ⑥ PROPOSED HMA SURFACE REMOVAL, 2 1/2"
- ⑦ PROPOSED PCC SURFACE REMOVAL, VARIABLE DEPTH (SEE DETAIL BD-33)
- ⑧ PROPOSED POLYMERIZED HMA BINDER COURSE, IL-4.75, N50; 3/4"
- ⑨ PROPOSED POLYMERIZED HMA SURFACE COURSE, STONE MATRIX ASPHALT, MIX "F", IL-9.5, N80; 1 3/4"
- ⑩ PROPOSED HMA SURFACE REMOVAL, 3 3/4"
- ⑪ EXISTING AGGREGATE BASE COURSE, ± 4"
- ⑫ EXISTING P.C.C. PAVEMENT, ± 11"
- ⑬ PROPOSED HMA BINDER COURSE, IL-9.5, N70; 2"
- ⑭ PROPOSED POLYMERIZED HMA BINDER COURSE, IL-4.75, N50; 1"
- ⑮ EXISTING HMA SURFACE COURSE, ± 19"
- ⑯ EXISTING HMA BASE COURSE, ± 19"

**NOTES**

- 1. THE CONTRACTOR SHALL MILL FIRST BEFORE PATCHING.
- 2. JOINT SEALANT SHALL BE PLACED ON THE BINDER COURSE.

HOT-MIX ASPHALT MIXTURE REQUIREMENTS			
MIXTURE USES	MIXTURE TYPE	AIR VOIDS @ Ndes	QUALITY MANAGEMENT PROGRAM (QMP)
PAVEMENT RESURFACING	POLYMERIZED HOT-MIX ASPHALT SURFACE COURSE, STONE MATRIX ASPHALT, IL-9.5, MIX "F", N80	3.5% @ 80 GYR	OCP
	POLYMERIZED HOT-MIX ASPHALT BINDER COURSE, IL-4.75, N50	3.5% @ 50 GYR	OCP
	HOT-MIX ASPHALT BINDER COURSE, IL-9.5, N70	4.0% @ 70 GYR	OCP
PATCHING	CLASS D PATCHES (HMA BINDER IL-19.0 mm)	4% @ 70 GYR	QC/OA

QMP DESIGNATION: QUALITY CONTROL/QUALITY ASSURANCE (QC/OA); QUALITY CONTROL FOR PERFORMANCE (OCP); PAY FOR PERFORMANCE (PFP)

- NOTE 1: THE UNIT WEIGHT USED TO CALCULATE ALL HMA SURFACE MIXTURE QUANTITIES IS 112 LBS/SQ YD/IN.
- NOTE 2: THE "AC TYPE" FOR POLYMERIZED HMA MIXES SHALL BE "SBS/SBR PG 76 -22" AND FOR NON-POLYMERIZED HMA THE "AC TYPE" SHALL BE "PG 64 -22" UNLESS MODIFIED BY SPECIAL PROVISIONS.

FOR USE OF RECYCLED MATERIALS SEE SPECIAL PROVISIONS.

QUALITY MANAGEMENT PROGRAM (QMP) IDENTIFIES THE PARTICULAR QUALITY CONTROL SPECIFICATION THAT APPLIES TO THE HMA MIXTURE.

MODEL: Default  
 FILE NAME: p:\m\m\room.d\illinois\p\p\DOT\Documents\DOT - Office\Drawings\1\Projects\113221\CADDData\Design\113221-sh-by-pjca.dgn

USER NAME = dumachla	DESIGNED -	REVISED -
PLOT SCALE = 100,0000' / in.	DRAWN -	REVISED -
PLOT DATE = 4/7/2021	CHECKED -	REVISED -
	DATE -	REVISED -

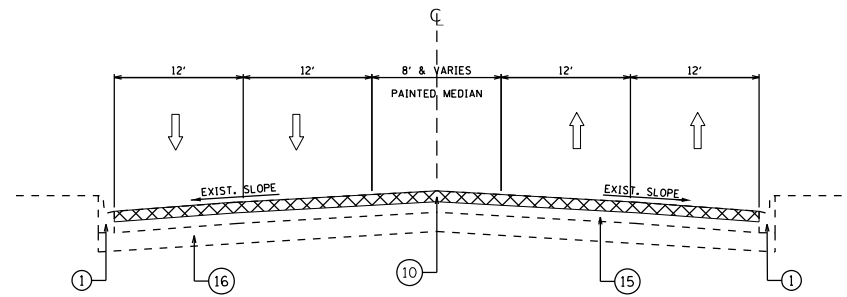
**STATE OF ILLINOIS**  
**DEPARTMENT OF TRANSPORTATION**

**EXISTING AND PROPOSED TYPICAL SECTIONS**  
**IL-60 (TOWNLINE RD) - E OF DES PLAINES RIVER TO RIVERWOODS RD**

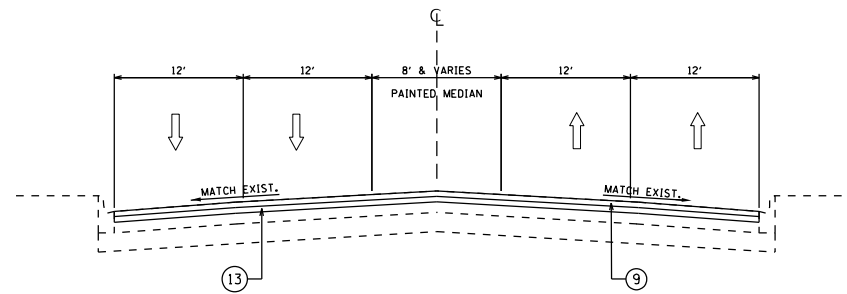
SCALE: SHEET 1 OF 3 SHEETS STA. TO STA.

F.A.P. RTE. 335	SECTION 2021-032-R5	COUNTY LAKE	TOTAL SHEETS 30	SHEET NO. 6
ILLINOIS FED. AID PROJECT			CONTRACT NO. 62N82	

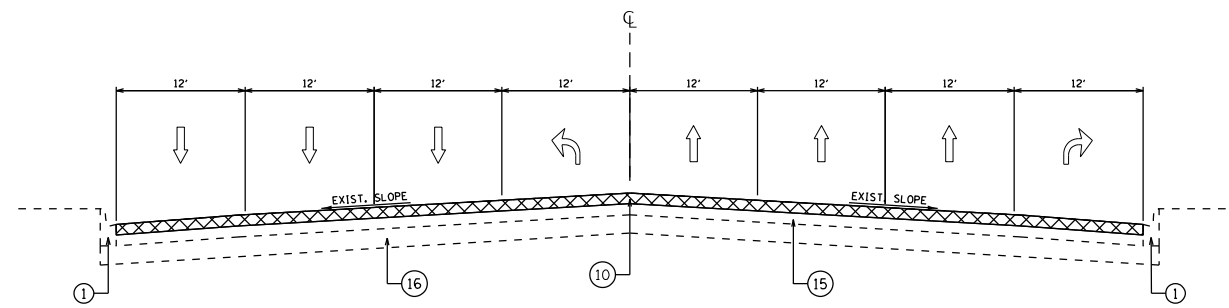




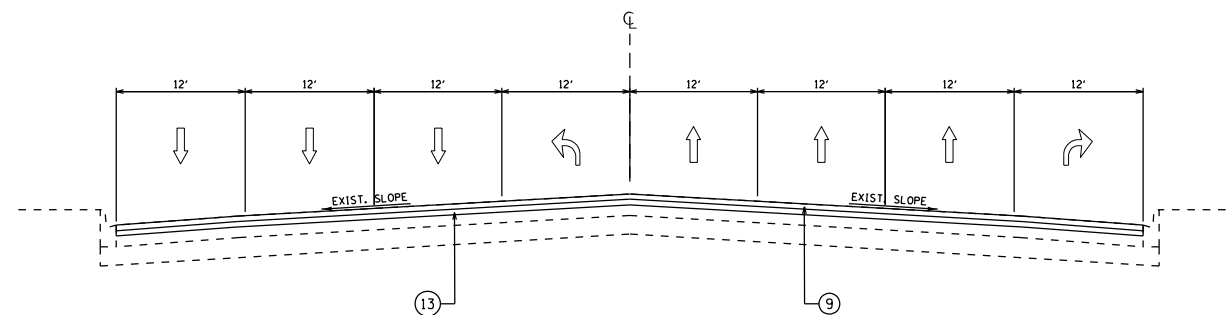
**IL-60 (TOWNLINE RD)**  
**EXISTING TYPICAL SECTION**  
 STA 115+15 TO STA 121+50



**IL-60 (TOWNLINE RD)**  
**PROPOSED TYPICAL SECTION**  
 STA 115+15 TO STA 121+50



**IL-60 (TOWNLINE RD)**  
**EXISTING TYPICAL SECTION**  
 STA 121+50 TO STA 127+37



**IL-60 (TOWNLINE RD)**  
**EXISTING TYPICAL SECTION**  
 STA 121+50 TO STA 127+37

**LEGEND**

- ① EXISTING COMB. CONC. CURB AND GUTTER, B-6.24
- ② EXISTING COMB. CONC. CURB AND GUTTER, B-6.12
- ③ EXISTING BITUMINOUS BASE COURSE, ± 12"
- ④ EXISTING H.M.A. SURFACE COURSE, ± 4"
- ⑤ EXISTING RAISED MEDIAN
- ⑥ PROPOSED HMA SURFACE REMOVAL, 2 1/2"
- ⑦ PROPOSED PCC SURFACE REMOVAL, VARIABLE DEPTH (SEE DETAIL BD-33)
- ⑧ PROPOSED POLYMERIZED HMA BINDER COURSE, IL-4.75, N50; 3/4"
- ⑨ PROPOSED POLYMERIZED HMA SURFACE COURSE, STONE MATRIX ASPHALT, MIX "F", IL-9.5, N80; 1 3/4"
- ⑩ PROPOSED HMA SURFACE REMOVAL, 3 3/4"
- ⑪ EXISTING AGGREGATE BASE COURSE, ± 4"
- ⑫ EXISTING P.C.C. PAVEMENT, ± 11"
- ⑬ PROPOSED HMA BINDER COURSE, IL-9.5, N70; 2"
- ⑭ PROPOSED POLYMERIZED HMA BINDER COURSE, IL-4.75, N50; 1"
- ⑮ EXISTING HMA SURFACE COURSE, ± 19"
- ⑯ EXISTING HMA BASE COURSE, ± 19"

**NOTES**

1. THE CONTRACTOR SHALL MILL FIRST BEFORE PATCHING.
2. JOINT SEALANT SHALL BE PLACED ON THE BINDER COURSE.

NOTE 1: THE UNIT WEIGHT USED TO CALCULATE ALL HMA SURFACE MIXTURE QUANTITIES IS 112 LBS/SQ YD/IN.

NOTE 2: THE "AC TYPE" FOR POLYMERIZED HMA MIXES SHALL BE "SBS/SBR PG 76 -22" AND FOR NON-POLYMERIZED HMA THE "AC TYPE" SHALL BE "PG 64 -22" UNLESS MODIFIED BY SPECIAL PROVISIONS.

FOR USE OF RECYCLED MATERIALS SEE SPECIAL PROVISIONS.

QUALITY MANAGEMENT PROGRAM (OMP) IDENTIFIES THE PARTICULAR QUALITY CONTROL SPECIFICATION THAT APPLIES TO THE HMA MIXTURE.

MODEL: Default  
 FILE NAME: p:\pub\mcrnon.dwt\illinois\dot\Documents\DOT - Office\Distric: 1\Projects\113221\CADDData\Design\113221-sh-by-pjca.dgn

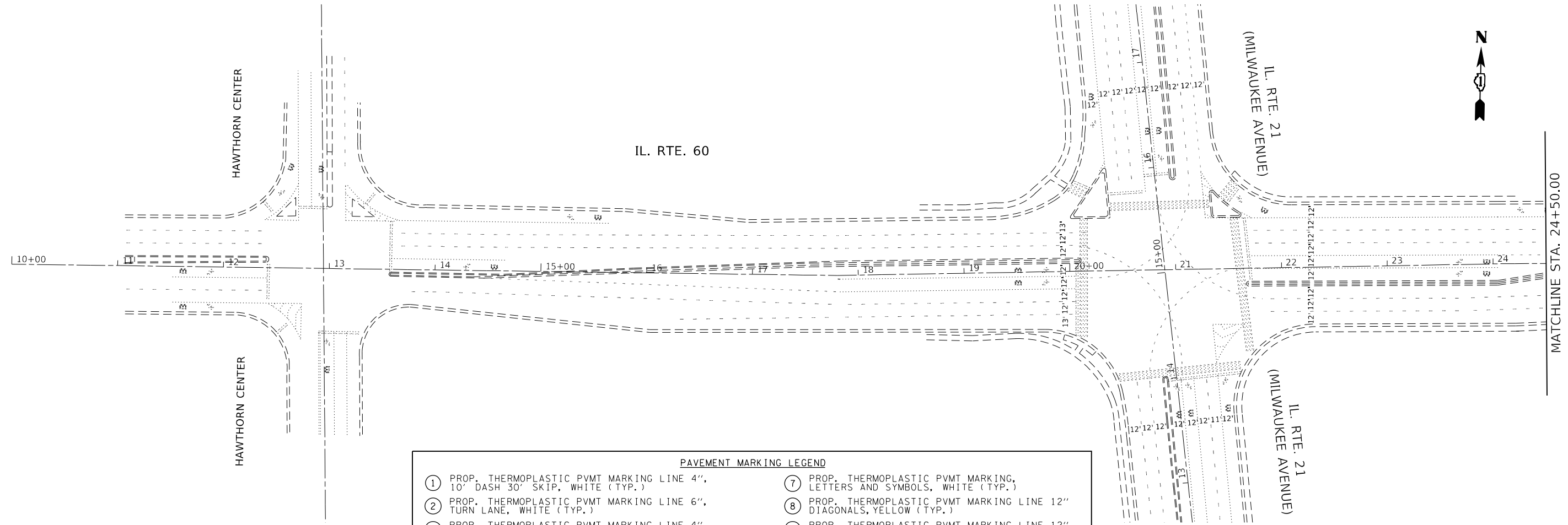
USER NAME = dumachia	DESIGNED -	REVISED -
	DRAWN -	REVISED -
PLOT SCALE = 100,0000' / in.	CHECKED -	REVISED -
PLOT DATE = 4/7/2021	DATE -	REVISED -

**STATE OF ILLINOIS**  
**DEPARTMENT OF TRANSPORTATION**

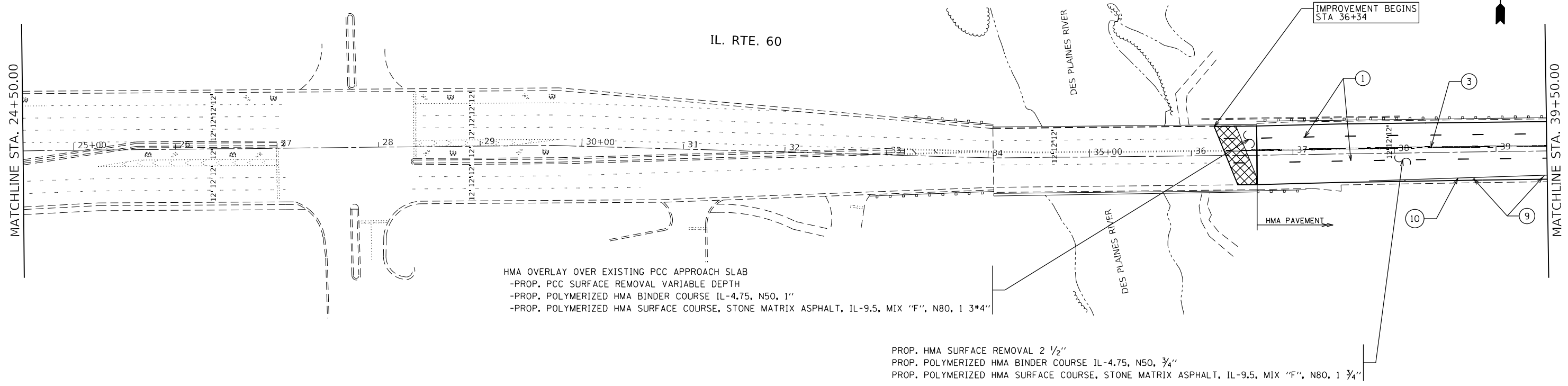
<b>EXISTING AND PROPOSED TYPICAL SECTIONS</b>			
<b>IL-60 (TOWNLINE RD) - E OF DES PLAINES RIVER TO RIVERWOODS RD</b>			
SCALE:	SHEET 3	OF 3	SHEETS
	STA.		TO STA.

F.A.P. RTE.	SECTION	COUNTY	TOTAL SHEETS	SHEET NO.
335	2021-032-R5	LAKE	30	8
CONTRACT NO. 62N82				
ILLINOIS FED. AID PROJECT				





PAVEMENT MARKING LEGEND	
① PROP. THERMOPLASTIC PVMT MARKING LINE 4", 10' DASH 30' SKIP, WHITE (TYP.)	⑦ PROP. THERMOPLASTIC PVMT MARKING, LETTERS AND SYMBOLS, WHITE (TYP.)
② PROP. THERMOPLASTIC PVMT MARKING LINE 6", TURN LANE, WHITE (TYP.)	⑧ PROP. THERMOPLASTIC PVMT MARKING LINE 12" DIAGONALS, YELLOW (TYP.)
③ PROP. THERMOPLASTIC PVMT MARKING LINE 4", DOUBLE YELLOW @ 11" C-C (TYP.)	⑨ PROP. THERMOPLASTIC PVMT MARKING LINE 12" DIAGONALS, WHITE (TYP.)
④ PROP. THERMOPLASTIC PVMT MARKING LINE 4", MEDIAN, YELLOW (TYP.)	⑩ PROP. THERMOPLASTIC PVMT MARKING LINE 4" EDGELINE, WHITE (TYP.)
⑤ PROP. THERMOPLASTIC PVMT MARKING LINE 24", STOPBAR, WHITE (TYP.)	⑪ PROP. THERMOPLASTIC PVMT MARKING LINE 6" 2' DASH 6' SKIP, WHITE (TYP.)
⑥ PROP. THERMOPLASTIC PVMT MARKING LINE 12", CROSSWALK, WHITE (TYP.)	⑫ PROP. THERMOPLASTIC PVMT MARKING LINE 8" GORE MARKING, WHITE (TYP.)



HMA OVERLAY OVER EXISTING PCC APPROACH SLAB  
 -PROP. PCC SURFACE REMOVAL VARIABLE DEPTH  
 -PROP. POLYMERIZED HMA BINDER COURSE IL-4.75, N50, 1"  
 -PROP. POLYMERIZED HMA SURFACE COURSE, STONE MATRIX ASPHALT, IL-9.5, MIX "F", N80, 1 3/4"

PROP. HMA SURFACE REMOVAL 2 1/2"  
 PROP. POLYMERIZED HMA BINDER COURSE IL-4.75, N50, 3/4"  
 PROP. POLYMERIZED HMA SURFACE COURSE, STONE MATRIX ASPHALT, IL-9.5, MIX "F", N80, 1 3/4"

MODEL: Default  
 FILE NAME: p:\planningroom.dwg  
 PROJECT: 2021-032-R5  
 PROJECT DATE: 4/8/2021  
 USER: dumachia

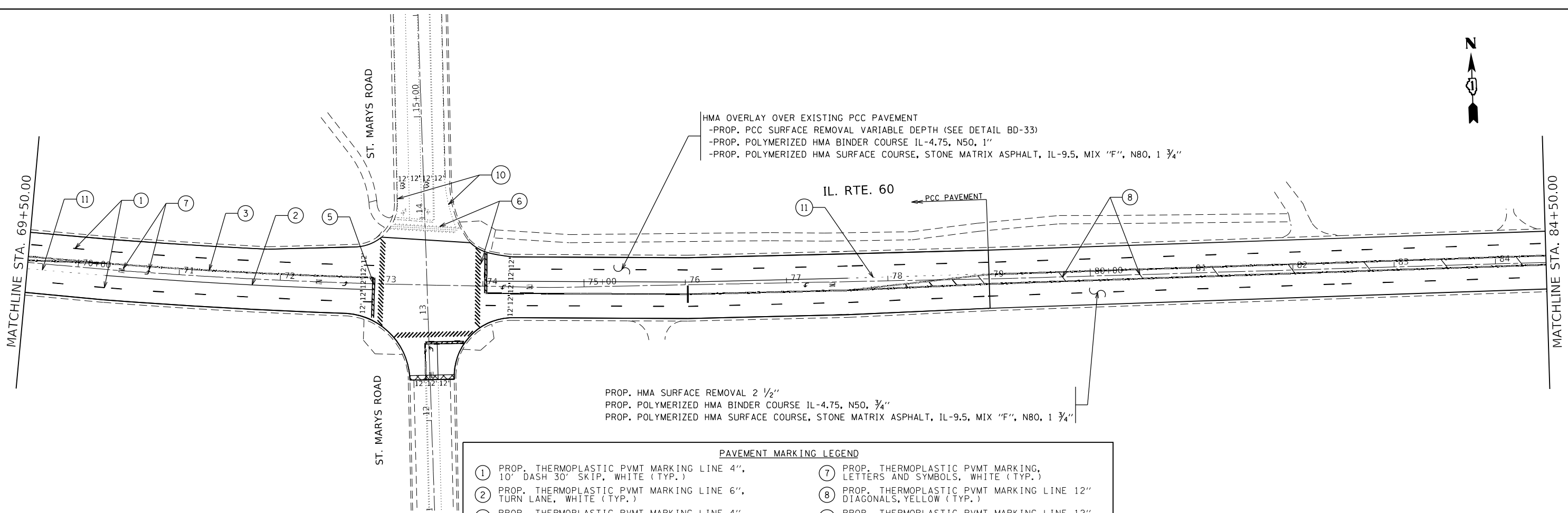
USER NAME = dumachia	DESIGNED -	REVISED -
DRAWN -	REVISOR -	REVISOR -
PLOT SCALE = 100,0000' / in.	CHECKED -	REVISOR -
PLOT DATE = 4/8/2021	DATE -	REVISOR -

**STATE OF ILLINOIS  
 DEPARTMENT OF TRANSPORTATION**

<b>ROADWAY PLAN</b>			
<b>IL. ROUTE 60 (IL. ROUTE 21 TO RIVERWOODS BLVD.)</b>			
SCALE: 1"=50'	SHEET 1	OF 4 SHEETS	STA. TO STA.

F.A.P. RTE. 335	SECTION 2021-032-R5	COUNTY LAKE	TOTAL SHEETS 30	SHEET NO. 9
CONTRACT NO. 62N82				
ILLINOIS FED. AID PROJECT				

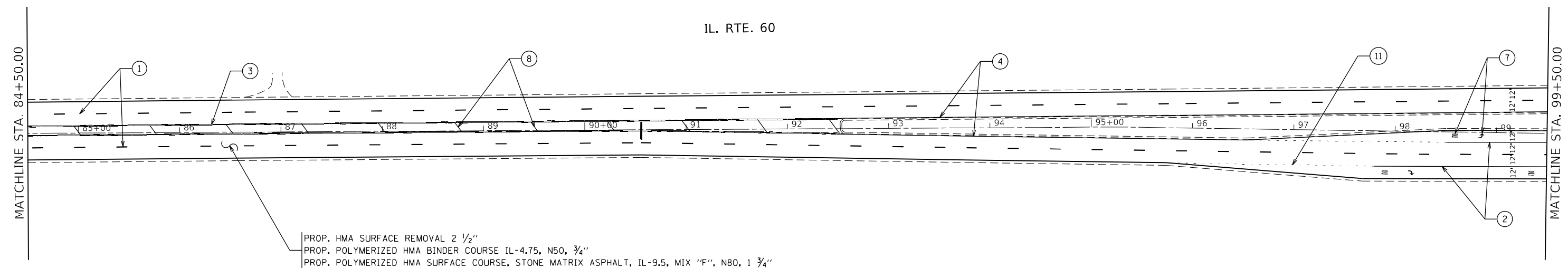




HMA OVERLAY OVER EXISTING PCC PAVEMENT  
 -PROP. PCC SURFACE REMOVAL VARIABLE DEPTH (SEE DETAIL BD-33)  
 -PROP. POLYMERIZED HMA BINDER COURSE IL-4.75, N50, 1"  
 -PROP. POLYMERIZED HMA SURFACE COURSE, STONE MATRIX ASPHALT, IL-9.5, MIX "F", N80, 1 3/4"

PROP. HMA SURFACE REMOVAL 2 1/2"  
 PROP. POLYMERIZED HMA BINDER COURSE IL-4.75, N50, 3/4"  
 PROP. POLYMERIZED HMA SURFACE COURSE, STONE MATRIX ASPHALT, IL-9.5, MIX "F", N80, 1 3/4"

PAVEMENT MARKING LEGEND	
① PROP. THERMOPLASTIC PVMT MARKING LINE 4", 10' DASH 30' SKIP, WHITE (TYP.)	⑦ PROP. THERMOPLASTIC PVMT MARKING, LETTERS AND SYMBOLS, WHITE (TYP.)
② PROP. THERMOPLASTIC PVMT MARKING LINE 6", TURN LANE, WHITE (TYP.)	⑧ PROP. THERMOPLASTIC PVMT MARKING LINE 12" DIAGONALS, YELLOW (TYP.)
③ PROP. THERMOPLASTIC PVMT MARKING LINE 4", DOUBLE YELLOW @ 11" C-C (TYP.)	⑨ PROP. THERMOPLASTIC PVMT MARKING LINE 12" DIAGONALS, WHITE (TYP.)
④ PROP. THERMOPLASTIC PVMT MARKING LINE 4", MEDIAN, YELLOW (TYP.)	⑩ PROP. THERMOPLASTIC PVMT MARKING LINE 4" EDGE LINE, WHITE (TYP.)
⑤ PROP. THERMOPLASTIC PVMT MARKING LINE 24", STOPBAR, WHITE (TYP.)	⑪ PROP. THERMOPLASTIC PVMT MARKING LINE 6" 2' DASH 6' SKIP, WHITE (TYP.)
⑥ PROP. THERMOPLASTIC PVMT MARKING LINE 12", CROSSWALK, WHITE (TYP.)	⑫ PROP. THERMOPLASTIC PVMT MARKING LINE 8" GORE MARKING, WHITE (TYP.)



PROP. HMA SURFACE REMOVAL 2 1/2"  
 PROP. POLYMERIZED HMA BINDER COURSE IL-4.75, N50, 3/4"  
 PROP. POLYMERIZED HMA SURFACE COURSE, STONE MATRIX ASPHALT, IL-9.5, MIX "F", N80, 1 3/4"

MODEL: Default  
 FILE NAME: p:\pub\mbarrom.dwg  
 PROJECT: I:\Projects\113221\CADD\Drawings\DOT Office\Drawings\113221-21-Riverwoods-Blvd.dwg  
 PLOT DATE: 4/21/2021

USER NAME = dumachla	DESIGNED -	REVISED -
PLOT SCALE = 100,0000' / in.	DRAWN -	REVISED -
PLOT DATE = 4/21/2021	CHECKED -	REVISED -
	DATE -	REVISED -

**STATE OF ILLINOIS  
 DEPARTMENT OF TRANSPORTATION**

<b>ROADWAY PLAN</b>	
<b>IL. ROUTE 60 (IL. ROUTE 21 TO RIVERWOODS BLVD.)</b>	
SCALE: 1"=50'	SHEET 3 OF 4 SHEETS
STA. _____	TO STA. _____

F.A.P. RTE. 335	SECTION 2021-032-R5	COUNTY LAKE	TOTAL SHEETS 28	SHEET NO. 11
CONTRACT NO. 62N82				
ILLINOIS FED. AID PROJECT				

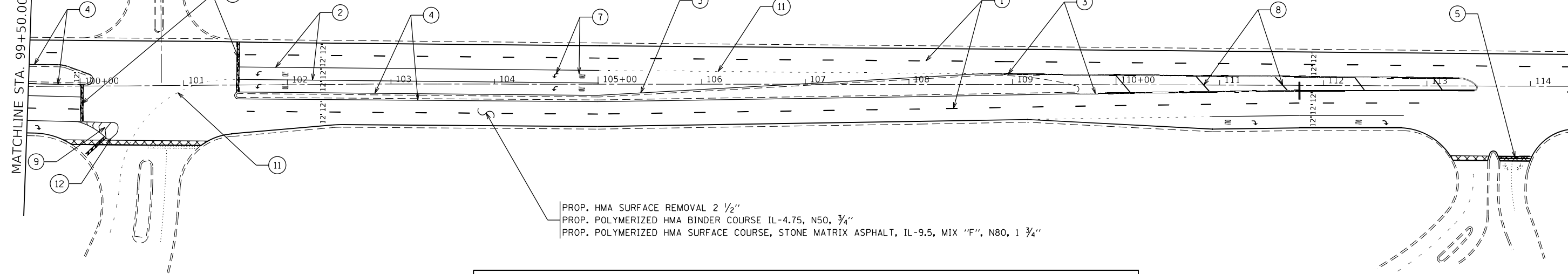


MATCHLINE STA. 99+50.00

BENNETT ST.

IL. RTE. 60

MATCHLINE STA. 114+50.00



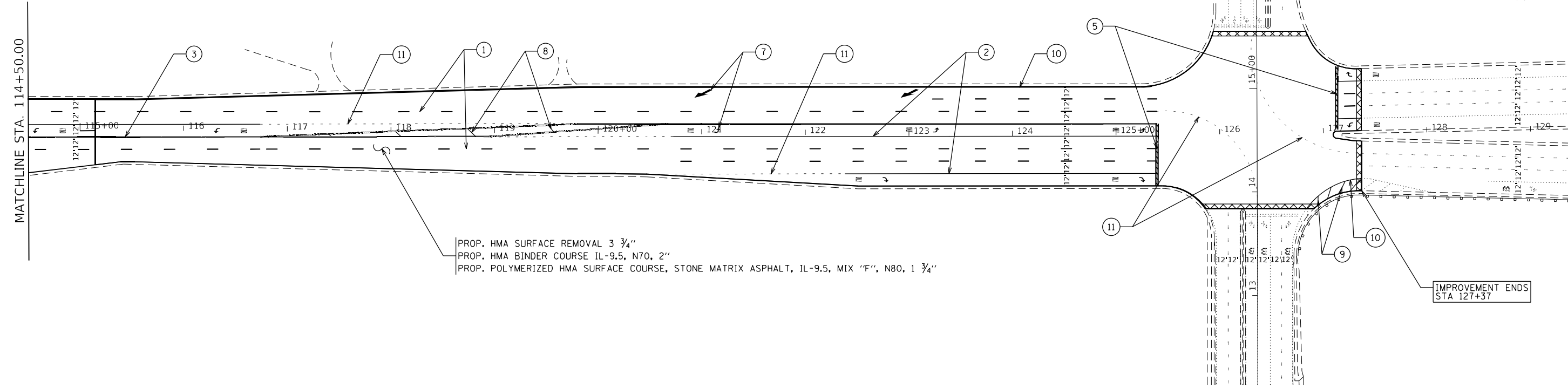
PROP. HMA SURFACE REMOVAL 2 1/2"  
 PROP. POLYMERIZED HMA BINDER COURSE IL-4.75, N50, 3/4"  
 PROP. POLYMERIZED HMA SURFACE COURSE, STONE MATRIX ASPHALT, IL-9.5, MIX "F", N80, 1 3/4"

PAVEMENT MARKING LEGEND

- |   |  |
|---|--|
| ① PROP. THERMOPLASTIC PVMT MARKING LINE 4", 10' DASH 30' SKIP, WHITE (TYP.) | ⑦ PROP. THERMOPLASTIC PVMT MARKING, LETTERS AND SYMBOLS, WHITE (TYP.)    |
| ② PROP. THERMOPLASTIC PVMT MARKING LINE 6", TURN LANE, WHITE (TYP.)         | ⑧ PROP. THERMOPLASTIC PVMT MARKING LINE 12" DIAGONALS, YELLOW (TYP.)     |
| ③ PROP. THERMOPLASTIC PVMT MARKING LINE 4", DOUBLE YELLOW @ 11" C-C (TYP.)  | ⑨ PROP. THERMOPLASTIC PVMT MARKING LINE 12" DIAGONALS, WHITE (TYP.)      |
| ④ PROP. THERMOPLASTIC PVMT MARKING LINE 4", MEDIAN, YELLOW (TYP.)           | ⑩ PROP. THERMOPLASTIC PVMT MARKING LINE 4" EDGELINE, WHITE (TYP.)        |
| ⑤ PROP. THERMOPLASTIC PVMT MARKING LINE 24", STOPBAR, WHITE (TYP.)          | ⑪ PROP. THERMOPLASTIC PVMT MARKING LINE 6" 2' DASH 6' SKIP, WHITE (TYP.) |
| ⑥ PROP. THERMOPLASTIC PVMT MARKING LINE 12", CROSSWALK, WHITE (TYP.)        | ⑫ PROP. THERMOPLASTIC PVMT MARKING LINE 8" GORE MARKING, WHITE (TYP.)    |

MATCHLINE STA. 114+50.00

MATCHLINE STA. 129+50.00



PROP. HMA SURFACE REMOVAL 3 3/4"  
 PROP. HMA BINDER COURSE IL-9.5, N70, 2"  
 PROP. POLYMERIZED HMA SURFACE COURSE, STONE MATRIX ASPHALT, IL-9.5, MIX "F", N80, 1 3/4"

IMPROVEMENT ENDS STA 127+37



MODEL: Default  
FILE NAME: p:\planning\room\dot\illinois\dot\pww\dot\Documents\DOT\_Offices\Distrefc\_1\Projects\113221\113221\113221-2\h\plan.dgn

USER NAME = dumachla	DESIGNED -	REVISED -
PLOT SCALE = 100,0000' / in.	DRAWN -	REVISED -
PLOT DATE = 4/8/2021	CHECKED -	REVISED -
	DATE -	REVISED -

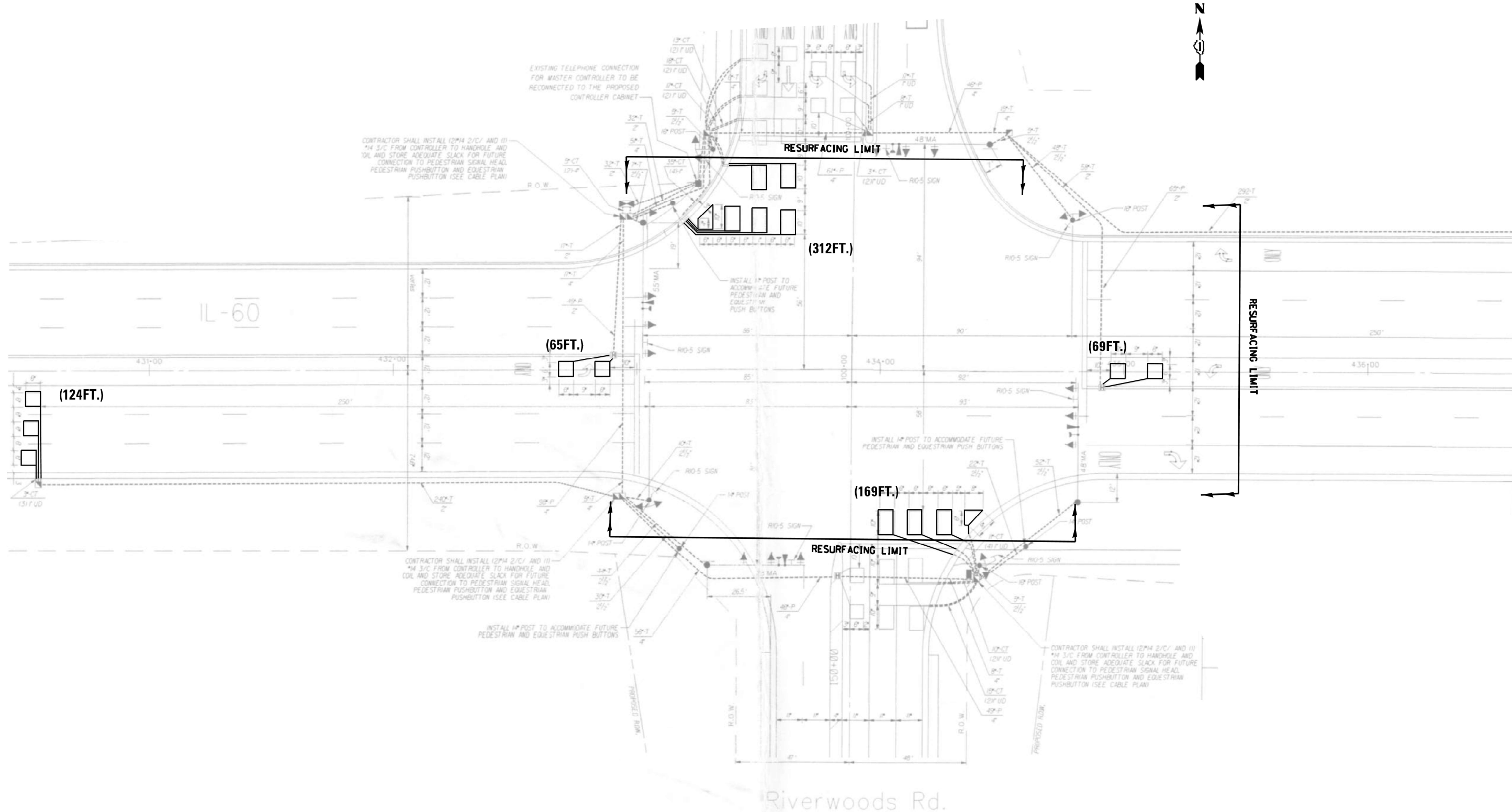
STATE OF ILLINOIS  
 DEPARTMENT OF TRANSPORTATION

ROADWAY PLAN  
 IL. ROUTE 60 (IL. ROUTE 21 TO RIVERWOODS BLVD.)  
 SCALE: 1"=50' SHEET 4 OF 4 SHEETS STA. TO STA.

F.A.P. RTE. 335	SECTION 2021-032-R5	COUNTY LAKE	TOTAL SHEETS 30	SHEET NO. 12
CONTRACT NO. 62N82				
ILLINOIS FED. AID PROJECT				







**NOTES:**

1. WORK SHALL MEET THE REQUIREMENTS OF THE SPECIAL PROVISION, "DETECTOR LOOP REPLACEMENT AND/OR INSTALLATION (ROADWAY GRINDING, RESURFACING & PATCHING OPERATIONS).
2. THIS PLAN IS FOR THE SOLE PURPOSE OF DETECTOR LOOP REPLACEMENT.

**REPLACE ALL DETECTOR LOOPS AS SHOWN  
(WITHIN THE RESURFACING LIMITS)**

CODE	ITEM	QUANTITY	UNIT	
88600600	DETECTOR LOOP REPLACEMENT	752	FOOT	TS#11700

USER NAME = dumachla	DESIGNED -	REVISED -
PLOT SCALE = 100,0000' / in.	DRAWN -	REVISED -
PLOT DATE = 4/7/2021	CHECKED -	REVISED -
	DATE -	REVISED -

**STATE OF ILLINOIS  
DEPARTMENT OF TRANSPORTATION**

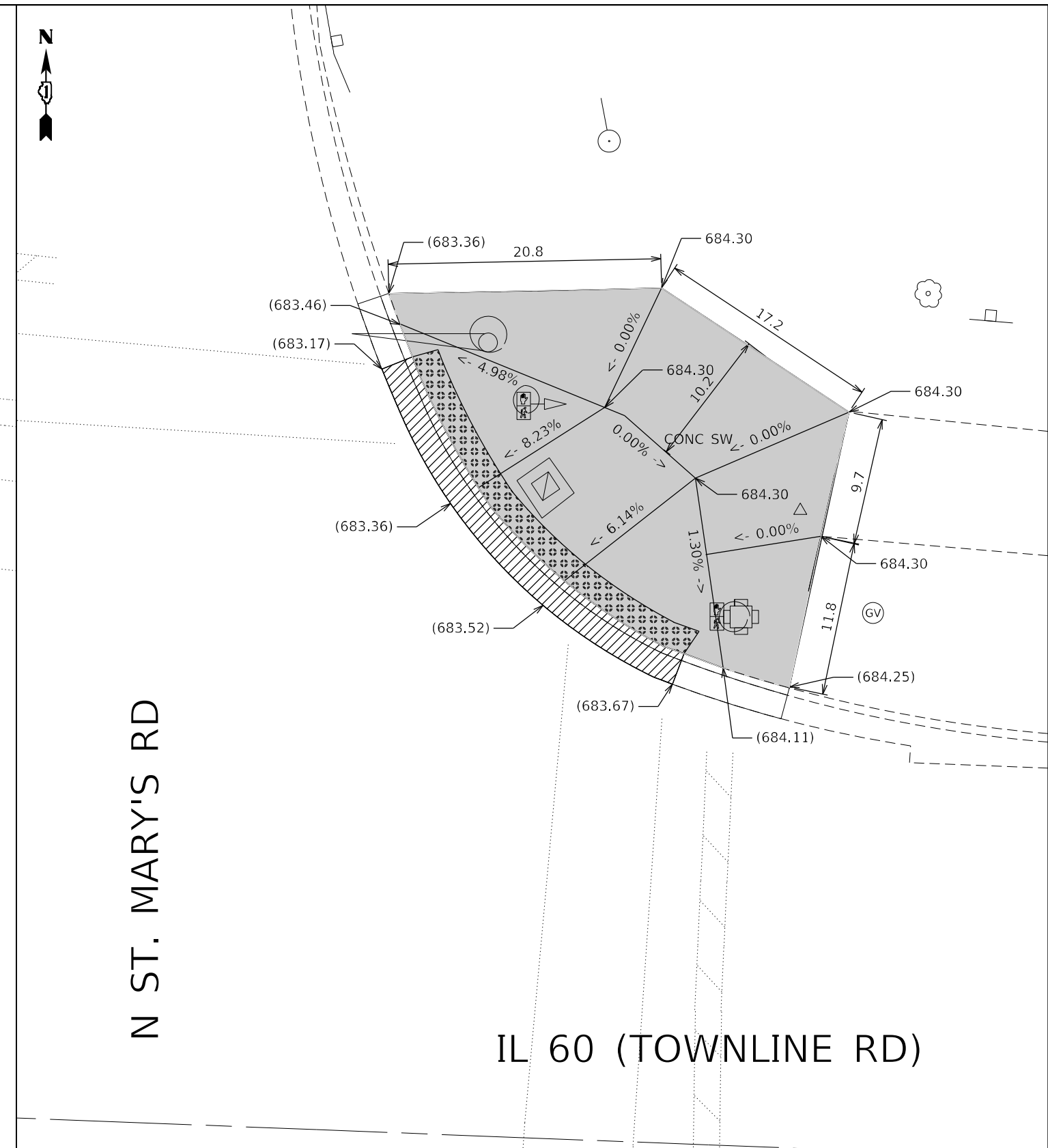
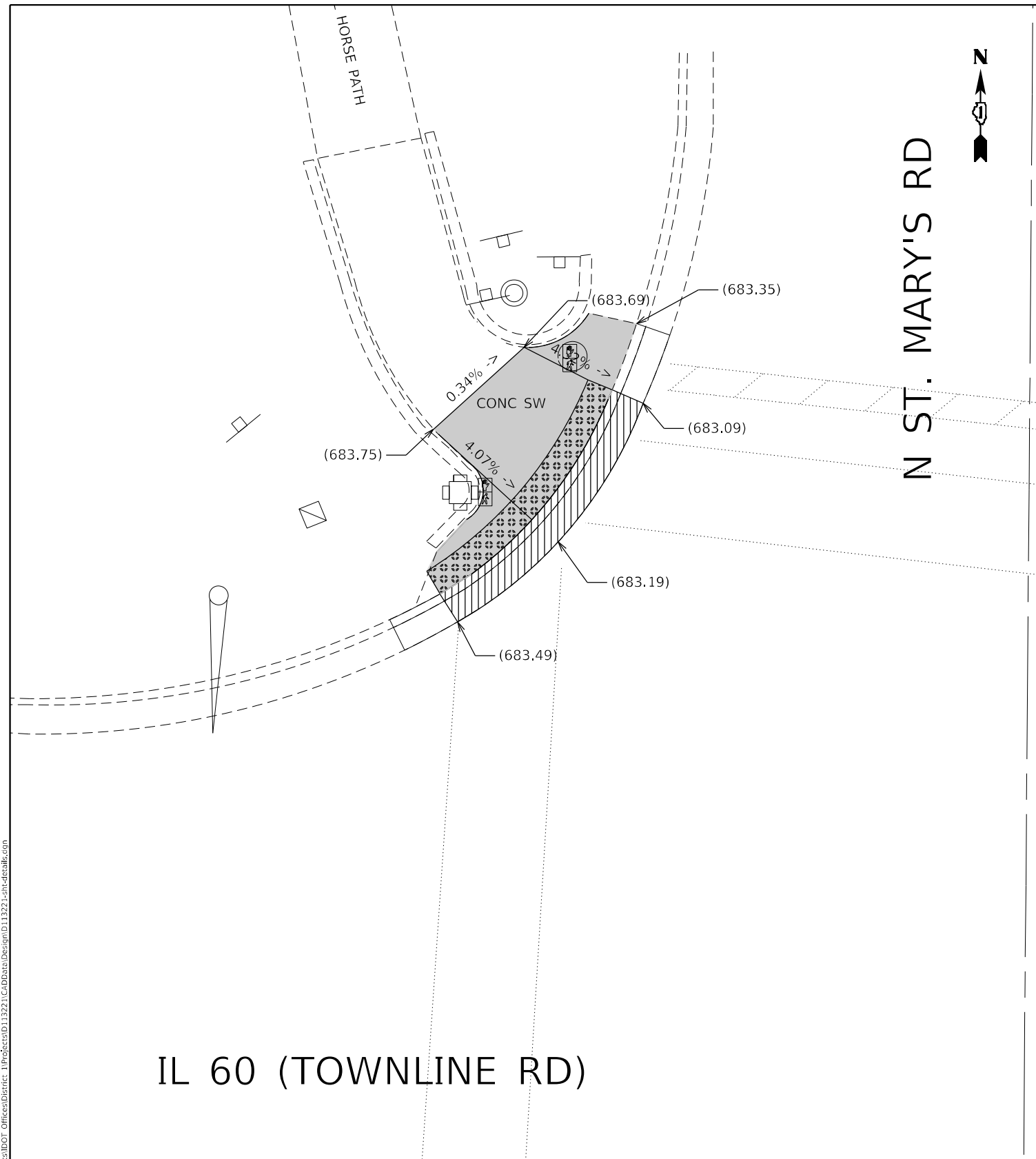
**DETECTOR LOOP REPLACEMENT PLAN  
IL. ROUTE 60 (IL. ROUTE 21 TO RIVERWOODS BLVD.)**

SCALE: 1"=50'    SHEET 3 OF 3 SHEETS    STA. TO STA.

F.A.P. RTE. 335	SECTION 2021-032-R5	COUNTY LAKE	TOTAL SHEETS 30	SHEET NO. 15
ILLINOIS FED. AID PROJECT			CONTRACT NO. 62N82	

MODEL: Default  
 FILE NAME: p:\planning\room\dot\illinois\dot\p\dot\dot\Documents\DOT\_Office\Design\1\Projects\113221\113221\CD\Data\Design\113221-2-hd-bas.dgn

MODEL: Default  
 FILE NAME: p:\data\mason\dot\illinois\pww\DOT\Documents\DOT - Office\Distric 1\Projects\113221\CADD\Data\Design\0113221-sh-detailed.com



IL 60 (TOWNLINE RD)

IL 60 (TOWNLINE RD)

REFERENCE BENCHMARK ELEV 684.43  
 BENCHMARK : SQUARE IN E CONC. BASE OF T.S. W/ ARM IN THE NE CORNER OF IL-60 & ST. MARY'S

REFERENCE BENCHMARK ELEV 684.43  
 BENCHMARK : SQUARE IN E CONC. BASE OF T.S. W/ ARM IN THE NE CORNER OF IL-60 & ST. MARY'S

LEGEND	
xx.xx'	EXISTING LENGTH
==	PROPOSED SIDE CURB
( )	EXISTING ELEVATION/SLOPE
[Solid Gray]	PROPOSED SIDEWALK
[Dotted Pattern]	DETECTABLE WARNINGS
[Cross-hatch Pattern]	SIDEWALK REMOVAL REPLACE W/TOPSOIL & SOD

USER NAME = dumachla	DESIGNED - PLP 10/04/2016	REVISED - PLP 11/07/2016
	DRAWN - PLP 10/04/2016	REVISED - PLP 08/11/2017
PLOT SCALE = 10,0000' +/-	CHECKED -	REVISED - PLP 09/14/2017
PLOT DATE = 3/19/2021	DATE -	REVISED - PLP 01/10/2018

STATE OF ILLINOIS  
 DEPARTMENT OF TRANSPORTATION

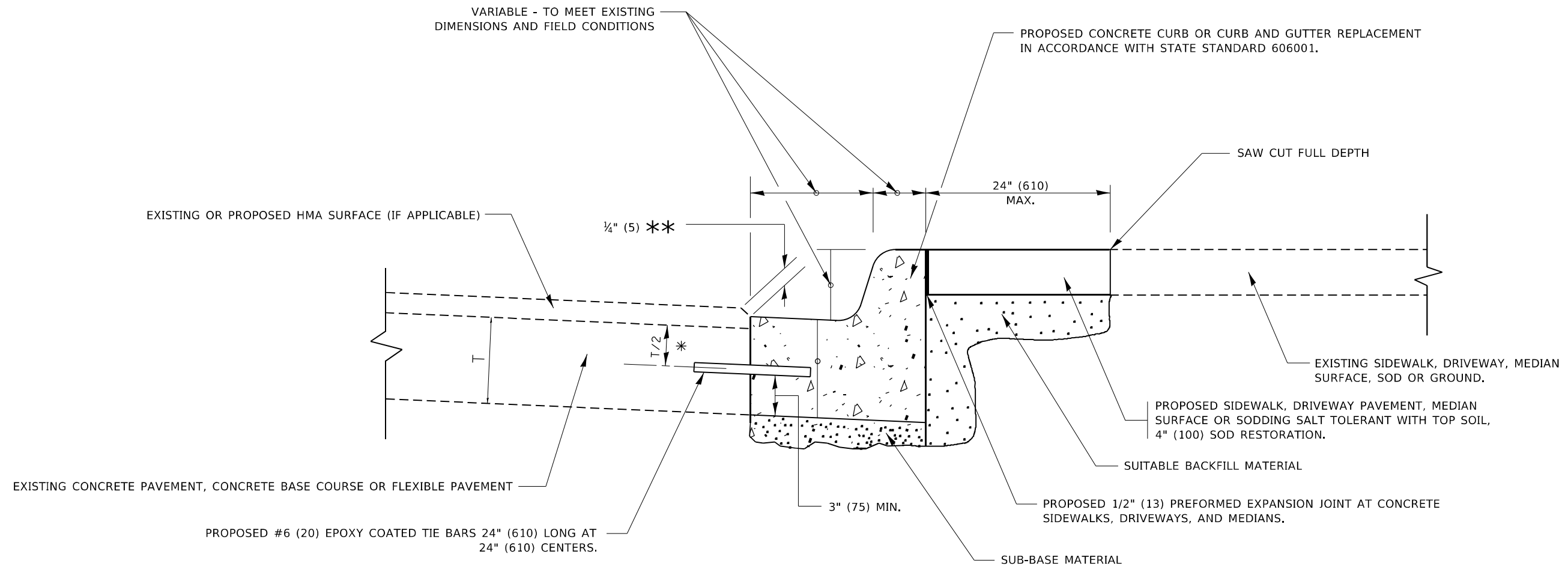
**SIDEWALK DETAIL PLAN**  
**IL 60 (TOWNLINE RD) - E OF DES PLAINES RIVER TO RIVERWOODS RD**  
 SCALE: SHEET 2 OF 2 SHEETS STA. TO STA.

F.A.P. RTE. 335	SECTION 2021-032-R5	COUNTY LAKE	TOTAL SHEETS 29	SHEET NO. 16
ILLINOIS FED. AID PROJECT			CONTRACT NO. 62N82	









- \* 3" (75) MINIMUM FROM TOP AND BOTTOM OF THE CONCRETE PAVEMENT OR BASE COURSE.
- \*\* IF THE FINAL SURFACE OF THE PAVEMENT IS CONCRETE, THE GUTTER IS TO BE FLUSH WITH THE PAVEMENT.

# CURB OR CURB AND GUTTER REMOVAL AND REPLACEMENT

ALL DIMENSIONS ARE IN INCHES (MILLIMETERS) UNLESS OTHERWISE SHOWN.

MODEL: Default  
FILE NAME: p:\u0000\m0000\dot\illinois\gov\pww\DOT\Documents\DOT\_Offices\Bartec\_1\Projects\113221\CADD\Bartec\Design\BIS\BIS.dgn

USER NAME = dumachia	DESIGNED - A. HOUSEH	REVISED - A. ABBAS 03-21-97
	DRAWN -	REVISED - M. GOMEZ 01-22-01
PLOT SCALE = 100,0000 ' / in.	CHECKED -	REVISED - R. BORO 12-15-09
PLOT DATE = 3/19/2021	DATE - 03-11-94	REVISED - K. SMITH 07-11-19

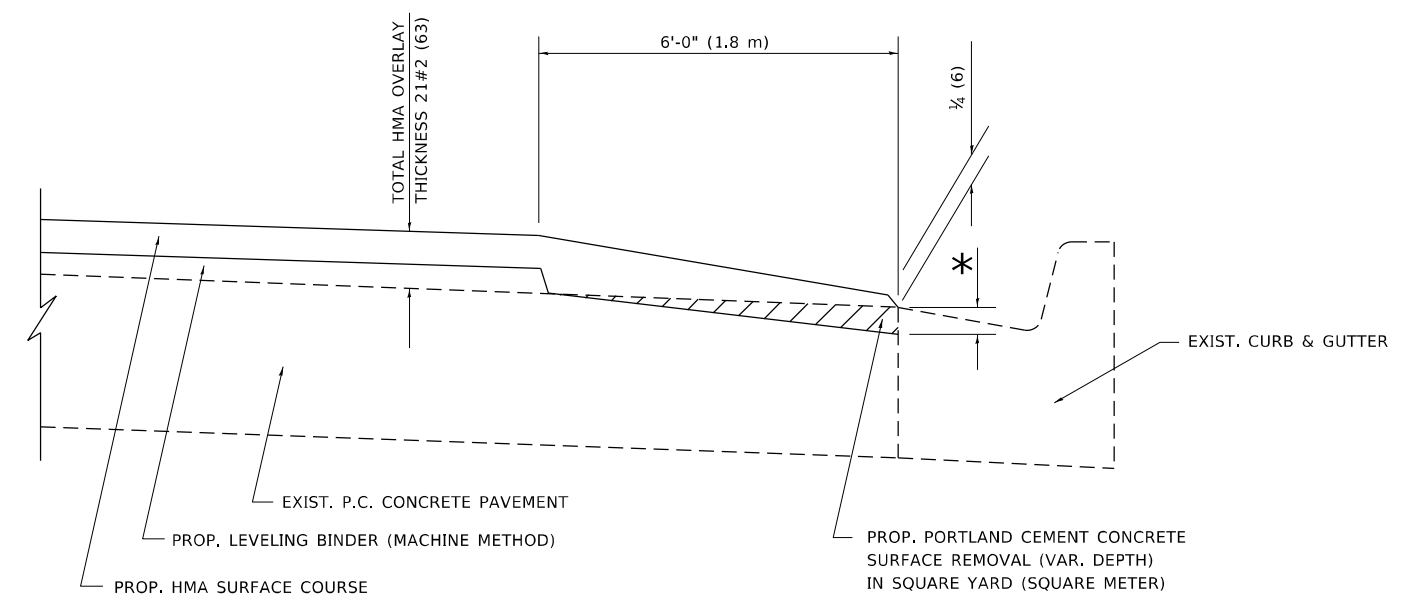
**STATE OF ILLINOIS  
DEPARTMENT OF TRANSPORTATION**

**CURB OR CURB AND GUTTER  
REMOVAL AND REPLACEMENT**

SCALE: NONE    SHEET 1 OF 1 SHEETS    STA.    TO STA.

F.A.P. RTE.	SECTION	COUNTY	TOTAL SHEETS	SHEET NO.
335	2021-032-RS	LAKE	29	19
<b>BD600-06 (BD-24)</b>		CONTRACT NO.	62N82	
ILLINOIS FED. AID PROJECT				





**HMA TAPER AT  
EDGE OF P.C. PAVEMENT**

HMA SURFACE	THICKNESS	LEVELING BINDER THICKNESS	* MILLING AT GUTTER FLAG
C OR D	1 1/2 (38)	1 (25)	1 1/4 (33)
E	1 3/4 (44)	3/4 (19)	1 1/2 (38)
F	1 3/4 (44)	3/4 (19)	1 1/2 (38)

ALL DIMENSIONS ARE IN INCHES (MILLIMETERS) UNLESS OTHERWISE SHOWN.

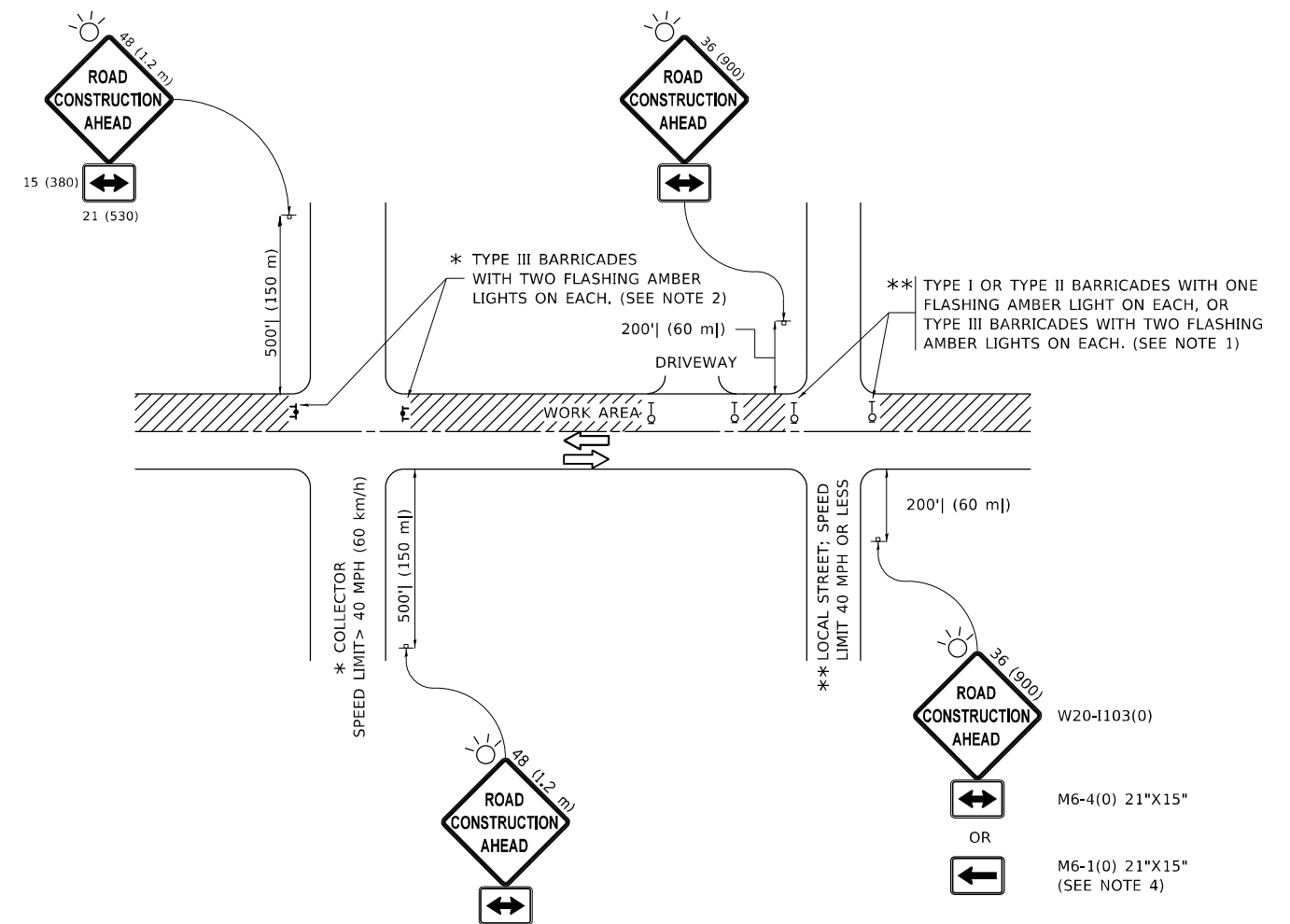
MODEL: Default  
 FILE NAME: p:\u0000\m0000\dot\illinois.gov\pww\DOT\Documents\DOT\_Offices\Distric: 1\Projects\113221\CADD\Design\Design\Distric.dgn

USER NAME = dumachla	DESIGNED - R. SHAH	REVISED - A. ABBAS 05-05-9
	DRAWN - JIS	REVISED - E. GOMEZ 12-21-00
PLOT SCALE = 100,0000 ' / in.	CHECKED - A. ABBAS	REVISED - R. BORO 01-01-07
PLOT DATE = 3/19/2021	DATE - 09-10-94	REVISED - JP CHANG 07-08-16

**STATE OF ILLINOIS  
DEPARTMENT OF TRANSPORTATION**

<b>HMA TAPER AT EDGE OF P.C. PAVEMENT</b>			
SCALE: NONE	SHEET 1	OF 1 SHEETS	STA. TO STA.

F.A.P. RTE. 335	SECTION 2021-032-RS	COUNTY LAKE	TOTAL SHEETS 29	SHEET NO. 21
<b>BD400-06 (BD33)</b>		CONTRACT NO.	62N82	
ILLINOIS FED. AID PROJECT				



**NOTES:**

1. SIDE ROAD WITH A SPEED LIMIT OF 40 MPH (60 km/h) OR LESS AS SHOWN ON THE DRAWING AND AS DIRECTED BY THE ENGINEER:
  - a) ONE "ROAD CONSTRUCTION AHEAD" SIGN 36 x 36 (900x900) WITH A FLASHER MOUNTED ON IT APPROXIMATELY 200' (60 m) IN ADVANCE OF THE MAIN ROUTE.
  - b) THE CLOSED PORTION OF THE MAIN ROUTE SHALL BE PROTECTED BY BLOCKING WITH TYPE I, TYPE II OR TYPE III BARRICADES, 1/3 OF THE CROSS SECTION OF THE CLOSED PORTION.
2. SIDE ROAD WITH A SPEED LIMIT GREATER THAN 40 MPH (60 km/h) AS SHOWN ON THE DRAWING AND AS DIRECTED BY THE ENGINEER:
  - a) ONE "ROAD CONSTRUCTION AHEAD" SIGN 48 x 48 (1.2 m x 1.2 m) WITH A FLASHER MOUNTED ON IT APPROXIMATELY 500' (150 m) IN ADVANCE OF THE MAIN ROUTE.
  - b) BLOCKING WITH TYPE III BARRICADES, 1/2 OF THE CROSS SECTION OF THE CLOSED PORTION.
3. CONES MAY BE SUBSTITUTED FOR BARRICADES OR DRUMS AT HALF THE SPACING DURING DAY OPERATIONS. CONES SHALL BE A MINIMUM OF 28 (710) IN HEIGHT.
4. SIGNING AND THE WORK ZONE, A SINGLE HEADED ARROW (M6-1) SHALL BE USED IN LIEU OF THE DOUBLE HEADED ARROW (M6-4).
5. WHEN WORK IS BEING PERFORMED ON A SIDE ROAD OR DRIVEWAY, FOLLOW THE APPLICABLE STANDARD(S). THE DIRECTIONAL ARROW (M6-1 OR M6-4) SHALL BE COVERED OR REMOVED WHEN NO LONGER CONSISTENT WITH THE TRAFFIC CONTROL SET-UP.
6. ADVANCE WARNING SIGNS ARE TO BE OMITTED ON DRIVEWAYS UNLESS OTHERWISE SPECIFIED IN THE PLANS OR BY THE ENGINEER.
7. THE TRAFFIC CONTROL AND PROTECTION FOR SIDE ROADS, INTERSECTIONS, AND DRIVEWAYS SHALL BE INCLUDED IN THE COST OF SPECIFIED TRAFFIC CONTROL STANDARDS OR ITEMS.

All dimensions are in inches (millimeters) unless otherwise shown.

MODEL: Default  
 FILE NAME: p:\m\m\room\dot\illinois\gov\p\w\dot\Documents\IDOT\_Offices\Distrefc\_1\Project\ID113221\CADD\Drawings\Design\Distrefc.dgn

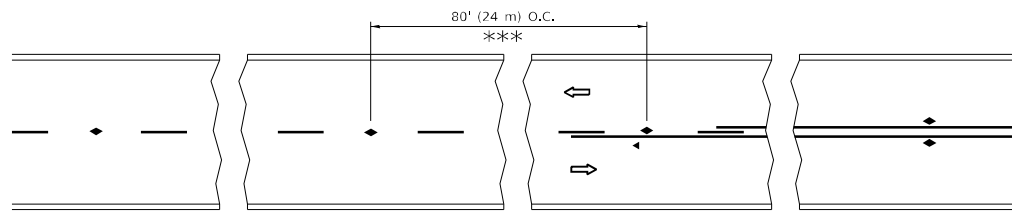
USER NAME = dumachla	DESIGNED - L.H.A.	REVISED - A. HOUSEH 10-15-96
PLOT SCALE = 100,0000' / in.	CHECKED -	REVISED - T. RAMMACHER 01-06-00
PLOT DATE = 3/19/2021	DATE - 06-89	REVISED - A. SCHUETZE 07-01-13
		REVISED - A. SCHUETZE 09-15-16

**STATE OF ILLINOIS  
DEPARTMENT OF TRANSPORTATION**

**TRAFFIC CONTROL AND PROTECTION FOR  
SIDE ROADS, INTERSECTIONS, AND DRIVEWAYS**

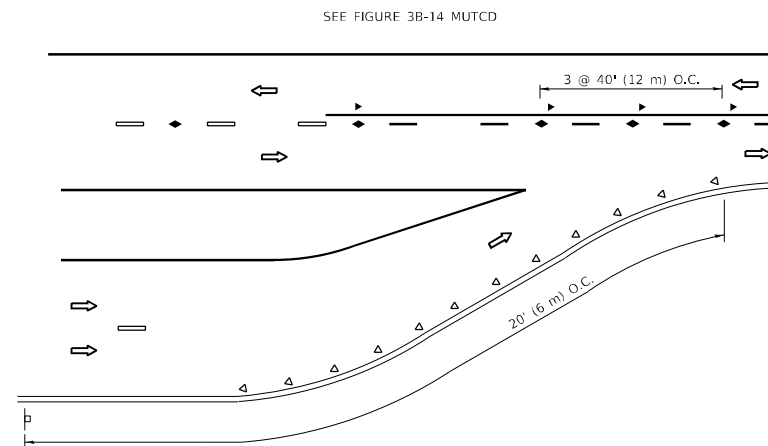
SCALE: NONE SHEET 1 OF 1 SHEETS STA. TO STA.

F.A.P. RTE.	SECTION	COUNTY	TOTAL SHEETS	SHEET NO.
335	2021-032-RS	LAKE	29	22
<b>TC-10</b>			CONTRACT NO. 62N82	
ILLINOIS FED. AID PROJECT				

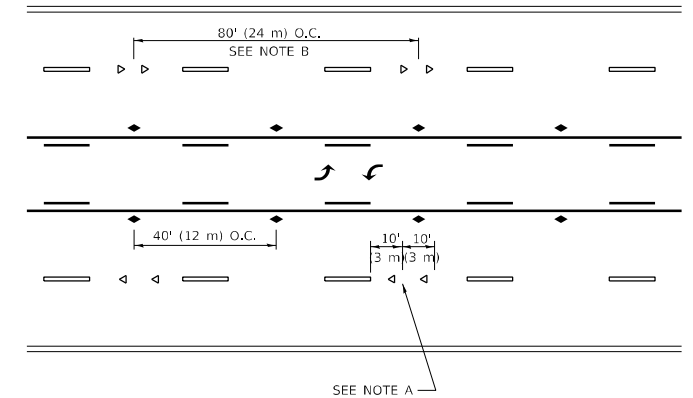


\*\*\* REDUCE TO 40' (12 m) O.C. ON CURVES WITH POSTED OR ADVISORY SPEED 45 M.P.H. (70 km/h) OR LESS.

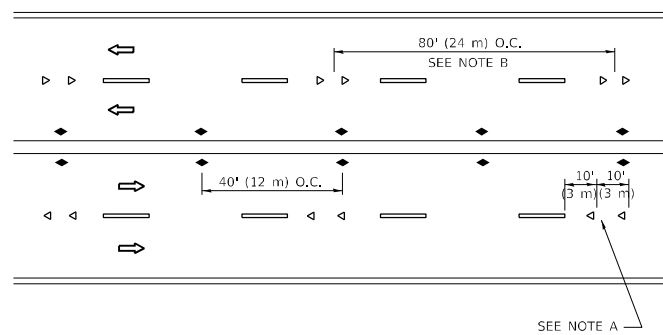
**TWO-LANE/TWO-WAY**



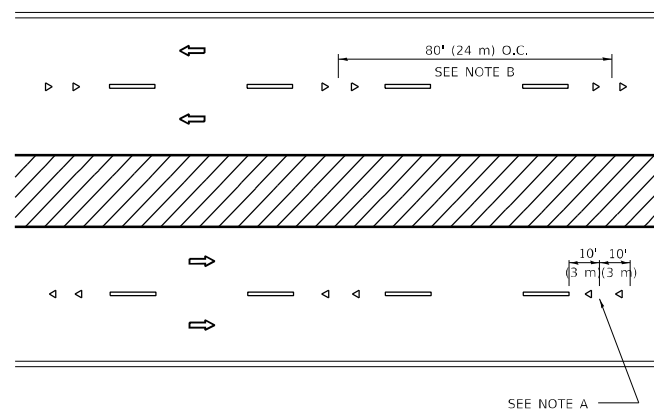
**LANE REDUCTION TRANSITION**



**TWO-WAY LEFT TURN**



**MULTI-LANE/UNDIVIDED**



**MULTI-LANE/DIVIDED**

**GENERAL NOTES**

1. MARKERS USED WITH DASHED LINES SHALL BE CENTERED IN THE GAP BETWEEN SEGMENTS.
2. MARKERS USED ADJACENT TO SOLID LINES SHALL BE OFFSET 2 TO 3 (50 TO 75) TOWARD TRAFFIC AS SHOWN.
3. MARKERS THROUGH TANGENTS LESS THAN 500' (150 m) IN LENGTH BETWEEN CURVES SHALL BE INSTALLED AT THE LESSER OF THE TWO CURVE SPACINGS.
4. MARKERS ARE TO BE USED ADJACENT TO BOTH SOLID WHITE LINES IN DUAL LEFT TURN LANES

**SYMBOLS**

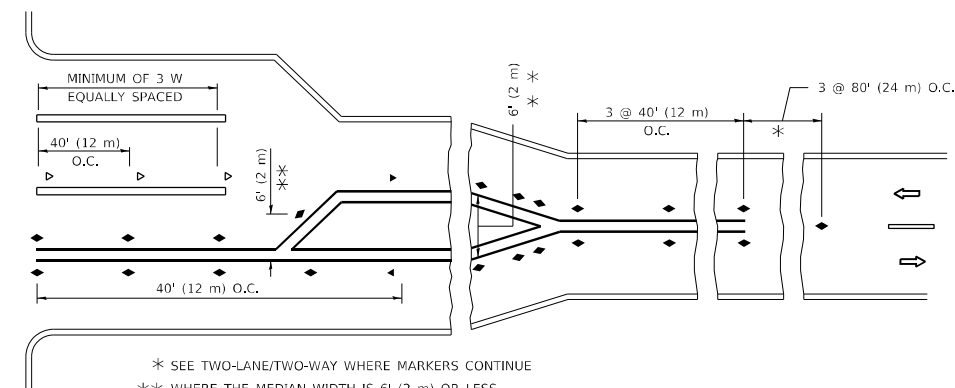
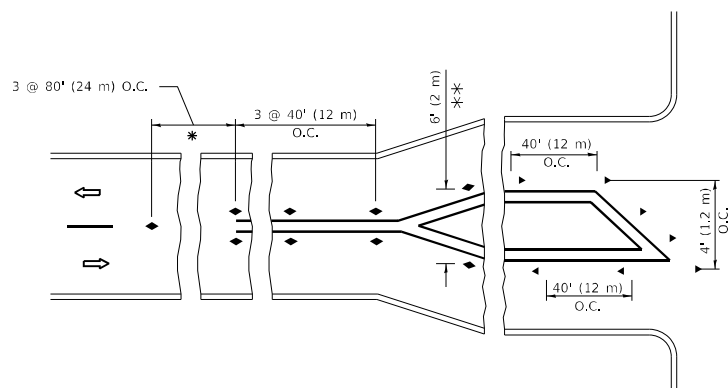
- YELLOW STRIPE
- WHITE STRIPE
- ◀ ONE-WAY AMBER MARKER
- ◀ ONE-WAY CRYSTAL MARKER (W/O)
- ◆ TWO-WAY AMBER MARKER

**LANE MARKER NOTES**

- A. USE DOUBLE LANE LINE MARKERS SPACED AS SHOWN.
- B. REDUCE TO 40' (12 m) O.C. ON CURVES WHERE ADVISORY SPEEDS ARE 10 M.P.H (20 km/h) LOWER THAN POSTED SPEEDS.

**DESIGN NOTES**

1. DOUBLE LANE LINE MARKERS SHALL BE USED UNLESS SPECIFIED OTHERWISE.
2. EXCEPT AS SHOWN ON THE LANE REDUCTION TRANSITION AND FREEWAY EXIT RAMP DETAIL, MARKERS ARE NOT TO BE SPECIFIED ON RIGHT EDGE LINES.
3. THE EXACT MARKER LIMITS, SPACING, AND COLOR SHALL BE INCLUDED IN THE PLANS WHEN STANDARD SPECIFICATIONS ARE NOT BEING USED.
4. MARKERS SHOULD NOT BE USED ALONGSIDE CURBS EXCEPT FOR EXTREMELY SHORT SECTIONS OF CURBS WHERE NOT MORE THAN TWO MARKERS WOULD BE INVOLVED.



\* SEE TWO-LANE/TWO-WAY WHERE MARKERS CONTINUE  
 \*\* WHERE THE MEDIAN WIDTH IS 6' (2 m) OR LESS USE TWO-WAY MARKERS.

**TURN LANES**

All dimensions are in inches (millimeters) unless otherwise shown.

MODEL: Default  
 FILE NAME: p:\data\m3000\dot\Documents\DOT\_Offices\Distric: 1\Projects\113221\CADD\Drawings\Design\Distric.dgn

USER NAME = dumachla	DESIGNED -	REVISED - T. RAMMACHER 03-12-99
PLOT SCALE = 100,0000' / in.	DRAWN -	REVISED - T. RAMMACHER 01-06-00
PLOT DATE = 3/19/2021	CHECKED -	REVISED - C. JUCIUS 09-09-09
	DATE -	REVISED - C. JUCIUS 07-01-13

**STATE OF ILLINOIS  
 DEPARTMENT OF TRANSPORTATION**

**TYPICAL APPLICATIONS  
 RAISED REFLECTIVE PAVEMENT MARKERS (SNOW-PLOW RESISTANT)**

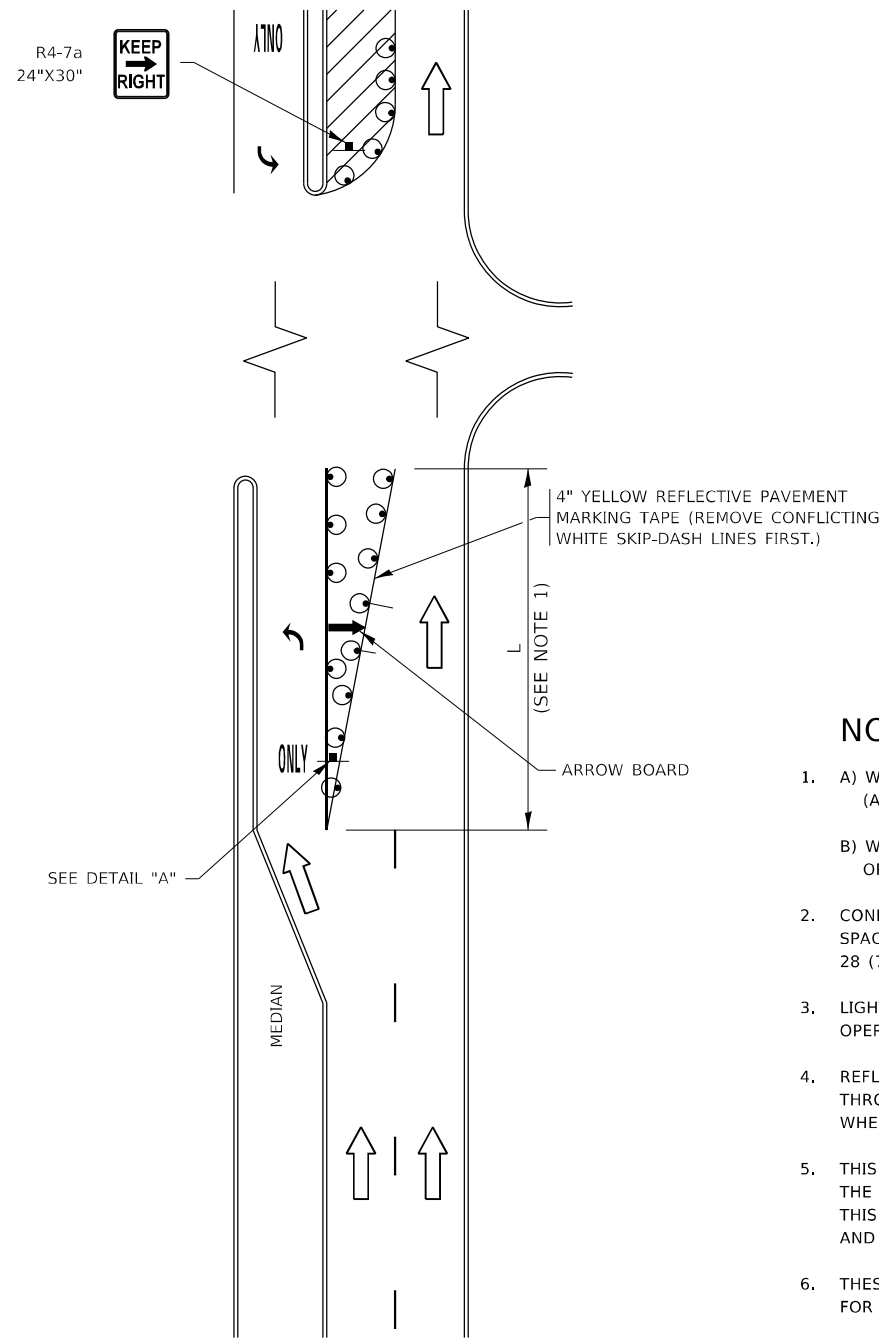
SCALE: NONE SHEET 1 OF 1 SHEETS STA. TO STA.

F.A.P. RTE.	SECTION	COUNTY	TOTAL SHEETS	SHEET NO.
335	2021-032-RS	LAKE	29	23
TC-11		CONTRACT NO.	62N82	
ILLINOIS FED. AID PROJECT				



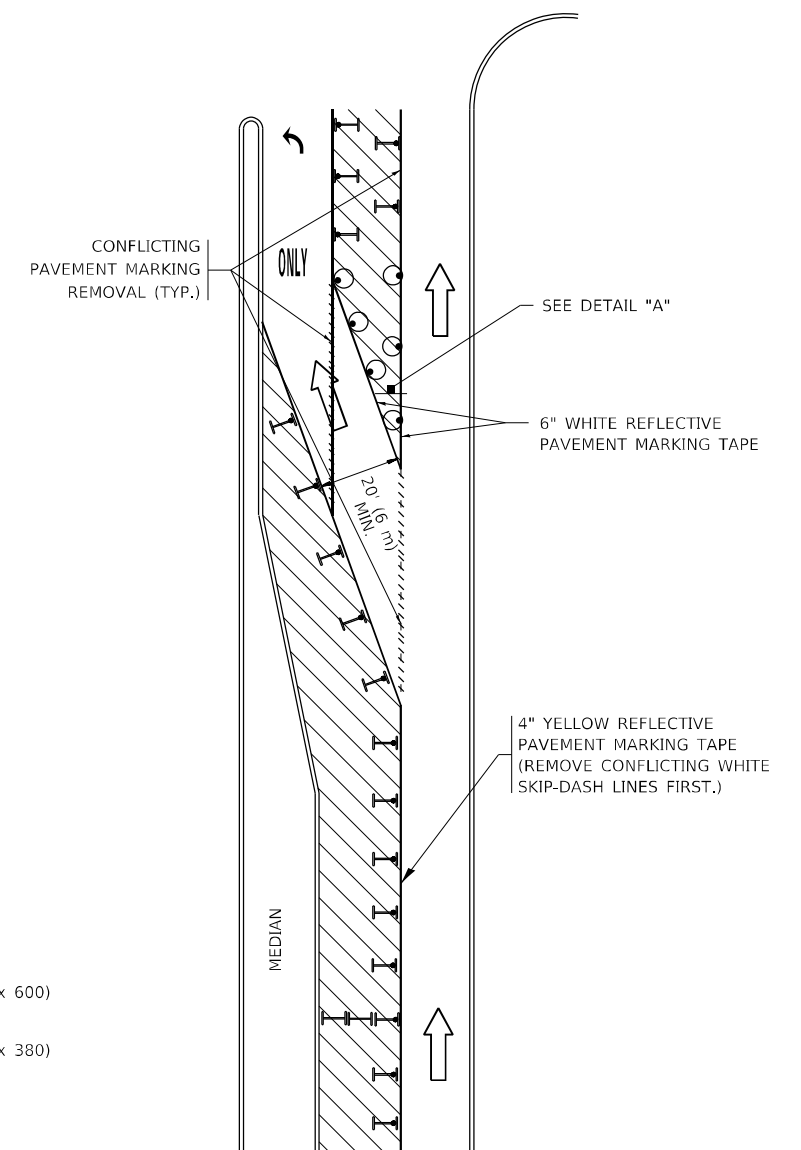


# TURN BAY ENTRANCE AT START OF LANE CLOSURE TAPER



**FIGURE 1**

# TURN BAY ENTRANCE WITHIN A LANE CLOSURE



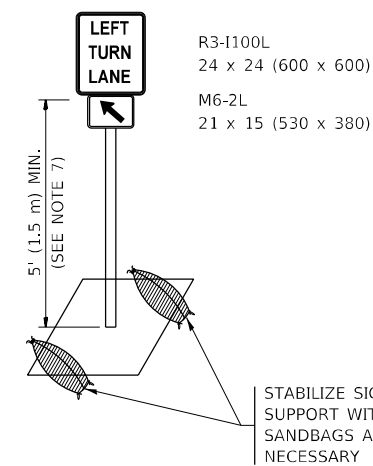
**FIGURE 2**

## LEGEND

- WORK AREA
- LANE OPEN TO TRAFFIC
- ARROW BOARD
- TYPE I OR II BARRICADE OR DRUM WITH STEADY BURN LIGHT
- DRUM WITH STEADY BURN LIGHT
- SIGN ASSEMBLY
- TYPE I OR II CHECK BARRICADE WITH FLASHING LIGHT

## NOTES:

1. A) WHEN "L" IS  $\leq$  THE STORAGE LENGTH OF THE TURN LANE (AS SHOWN IN FIG. 1), USE FIGURE 1.  
B) WHEN "L" IS  $>$  THE STORAGE LENGTH OF THE TURN LANE OR THE TURN LANE IS WITHIN THE LANE CLOSURE, USE FIGURE 2.
2. CONES MAY BE SUBSTITUTED FOR BARRICADES OR DRUMS AT HALF THE SPACING DURING DAY OPERATIONS. CONES SHALL BE A MINIMUM OF 28 (710) IN HEIGHT.
3. LIGHTS WILL NOT BE REQUIRED ON BARRICADES OR DRUMS FOR DAY OPERATIONS. ALL LIGHTS SHALL BE MONODIRECTIONAL.
4. REFLECTIVE TEMPORARY PAVEMENT MARKINGS SHALL BE PLACED THROUGHOUT THE BARRICADED AREAS OF EACH TURN BAY AS SHOWN WHERE THE CLOSURE TIME IS GREATER THAN FOURTEEN (14) DAYS.
5. THIS APPLICATION ALSO APPLIES WHEN WORK IS BEING PERFORMED IN THE RIGHT LANE(S) AND THE RIGHT TURN BAY IS TO REMAIN OPEN. UNDER THIS CONDITION, "RIGHT TURN LANE" R3-1100R 24 x 24 (600 x 600) AND M6-2R 21 x 15 (530 x 380) SHALL BE USED.
6. THESE CONTROLS SHALL SUPPLEMENT MAINLINE TRAFFIC CONTROL FOR LANE CLOSURES.
7. THE SIGNS SHALL BE MOUNTED ABOVE THE BARRICADES/DRUMS ON SEPARATE SIGN SUPPORTS THAT MEET NCHRP 350 OR MASH REQUIREMENTS.
8. TRAFFIC CONTROL AND PROTECTION AT TURN BAYS (TO REMAIN OPEN TO TRAFFIC) SHALL BE INCLUDED IN THE COST OF SPECIFIED TRAFFIC CONTROL STANDARDS OR ITEMS.



**DETAIL A**

All dimensions are in inches (millimeters) unless otherwise shown.

MODEL: Default  
 FILE NAME: p:\pub\mcommodat\illinois.gov\PIWDOT\Documents\DOT\_Offices\District 1\Projects\113221\CADDData\Design\Dist5\fig.dgn

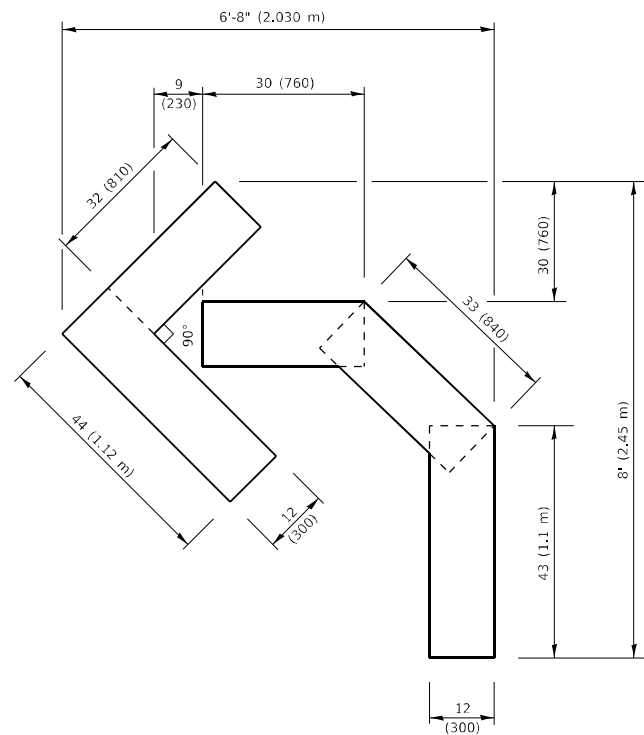
USER NAME = dumachla	DESIGNED - T. RAMMACHER 09-08-94	REVISED - R. BORO 09-14-09
	DRAWN - A. HOUSEH 11-07-95	REVISED - A. SCHUETZE 07-01-13
PLOT SCALE = 100,0000' / in.	CHECKED - A. HOUSEH 10-12-96	REVISED - A. SCHUETZE 09-15-16
PLOT DATE = 3/19/2021	DATE - T. RAMMACHER 01-06-00	REVISED -

**STATE OF ILLINOIS  
DEPARTMENT OF TRANSPORTATION**

**TRAFFIC CONTROL AND PROTECTION AT TURN BAYS  
(TO REMAIN OPEN TO TRAFFIC)**

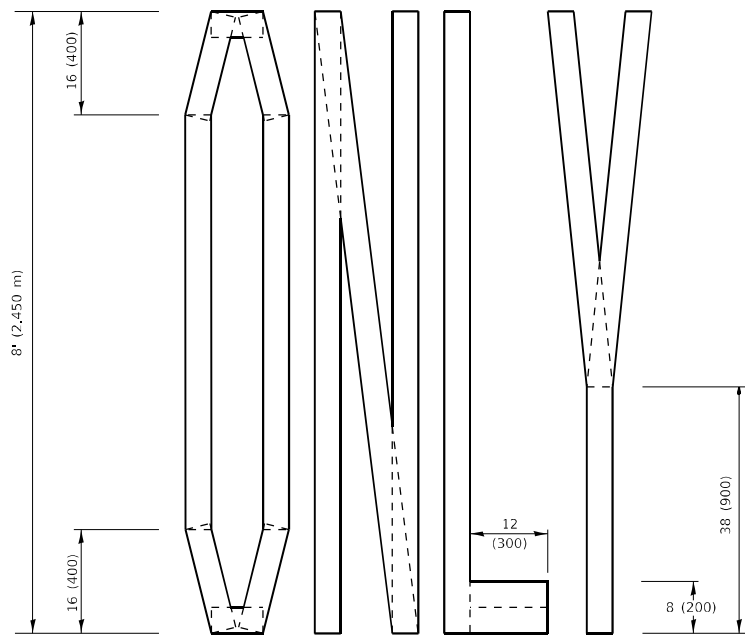
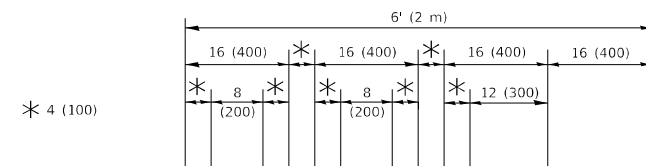
SCALE: NONE SHEET 1 OF 1 SHEETS STA. TO STA.

F.A.P. RTE. 335	SECTION 2021-032-RS	COUNTY LAKE	TOTAL SHEETS 29	SHEET NO. 25
TC-14		CONTRACT NO. 62N82		
ILLINOIS FED. AID PROJECT				



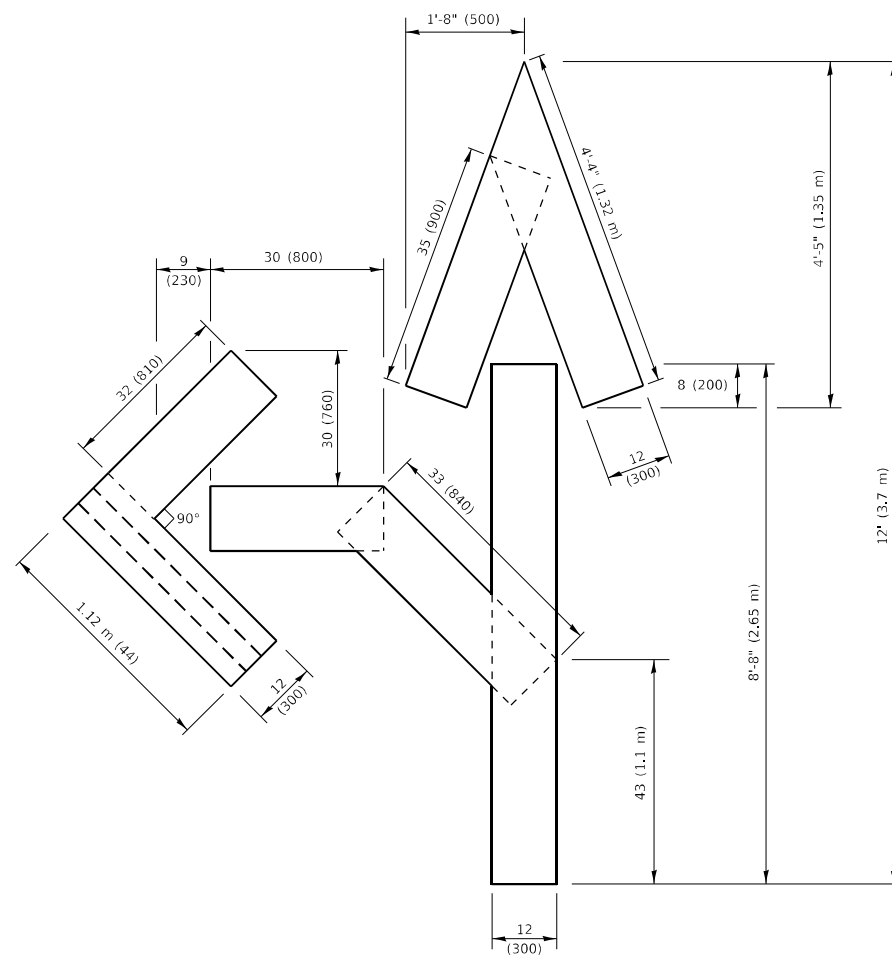
**QUANTITY**

4 (100) LINE = 45.5 ft. (13.9 m)  
15.2 sq. ft. (1.41 sq. m)



**QUANTITY**

4 (100) LINE = 64.1 ft. (19.5 m)  
21.4 sq. ft. (1.99 sq. m)

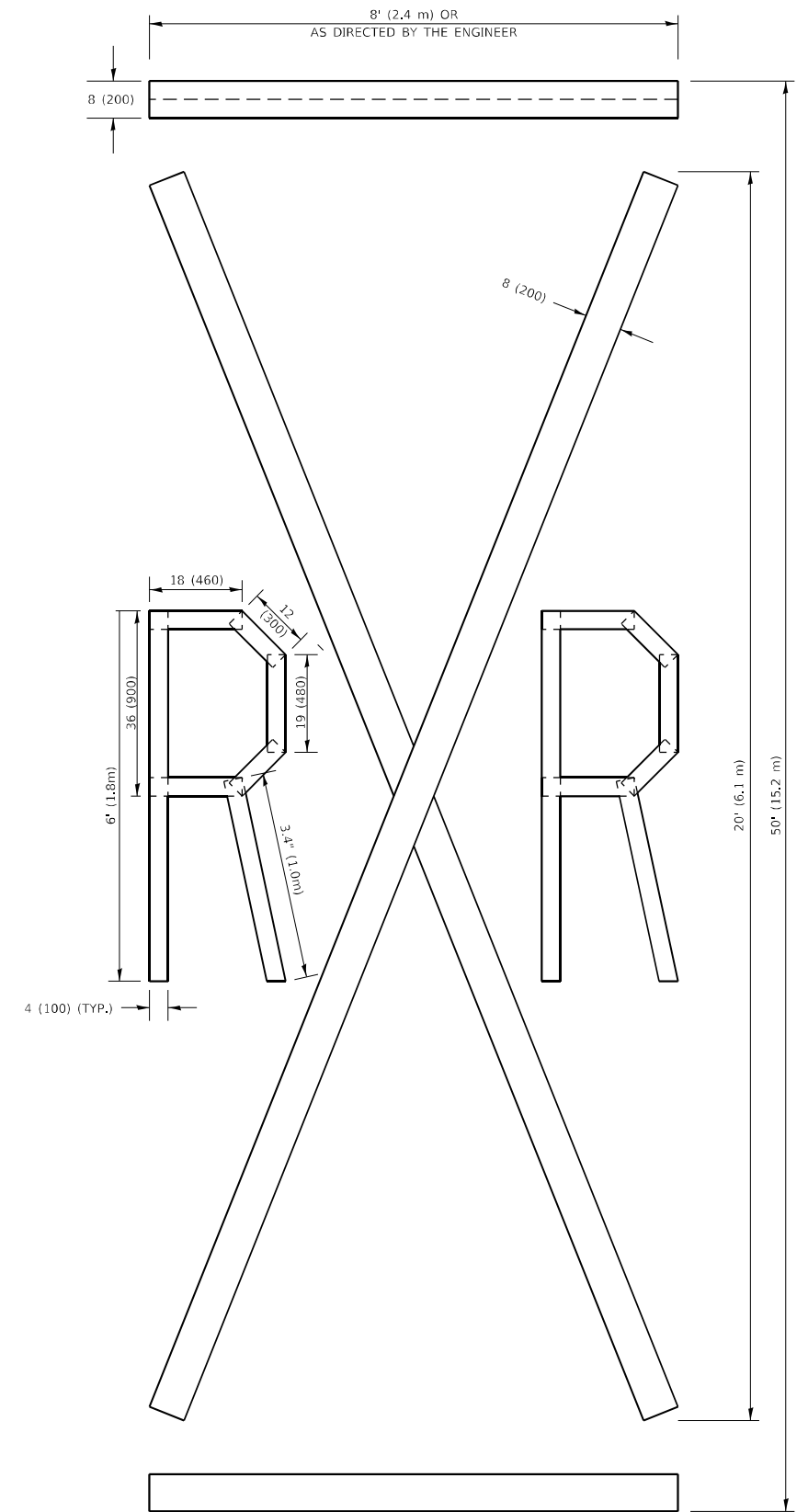


**QUANTITY**

4 (100) LINE = 82.5 ft. (25.1 m)  
27.5 sq. ft. (2.53 sq. m)

**NOTE:**

ALL QUANTITIES OF PLACEMENT ARE REPRESENTED IN LINEAR FEET OF 4" LINES TO MATCH THE 4" TEMPORARY TAPE PAY ITEM AND REPRESENTS THE TOTAL QUANTITY OF 4" TAPE REQUIRED.



**QUANTITY**

4 (100) LINE = 225.9 ft. (68.9 m)  
75.3 sq. ft. (6.99 sq. m)

All dimensions are in inches (millimeters) unless otherwise shown.

MODEL: Default  
FILE NAME: P:\pub\barcom\_dot\_illinois\gov\PI\DOT\Document\DOT\_Offices\District 1\Projects\CD113221\CAD\data\Design\B655.dwg

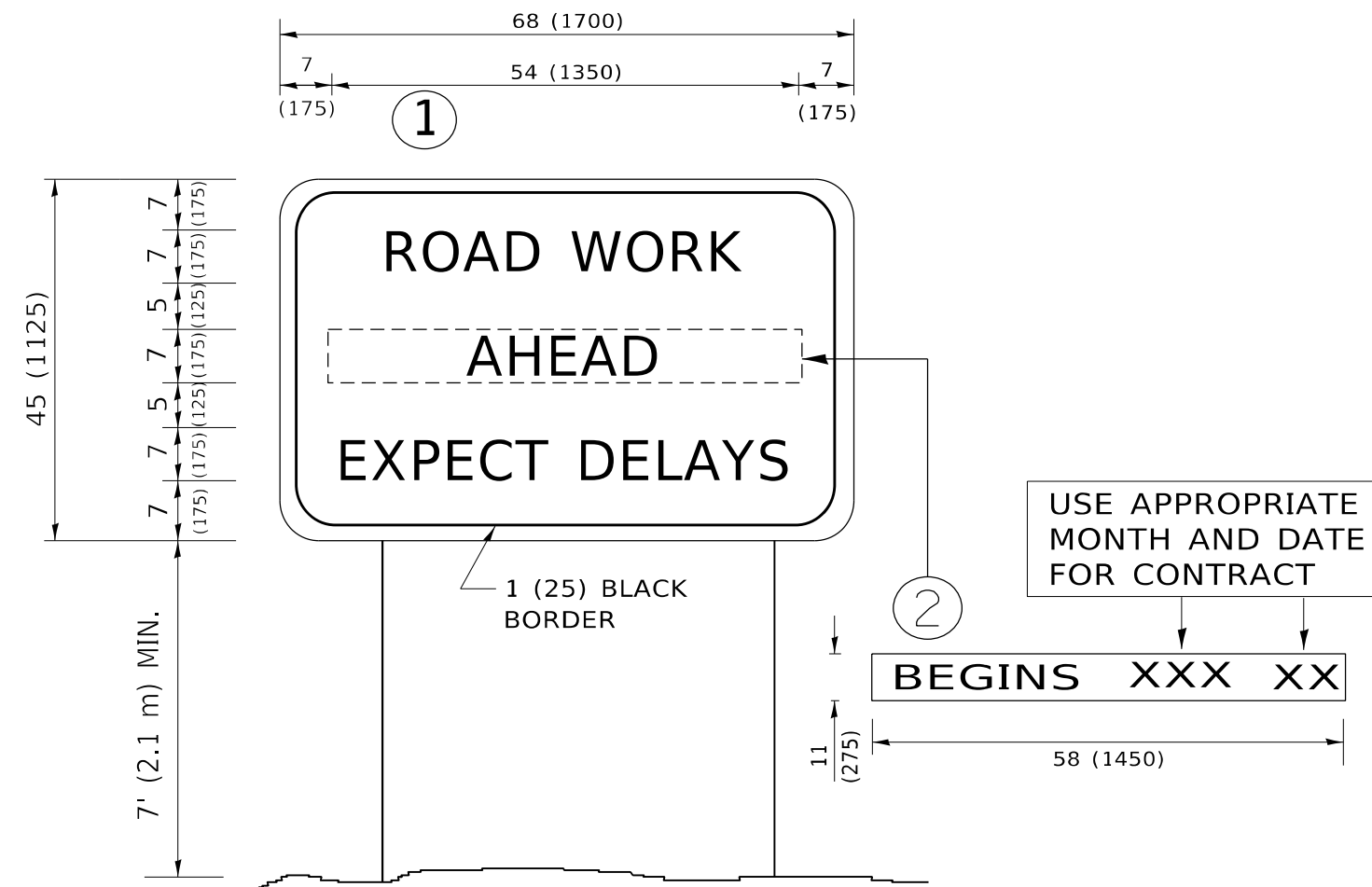
USER NAME = dumachia	DESIGNED -	REVISED - T. RAMMACHER 03-02-98
	DRAWN -	REVISED - E. GOMEZ 08-28-00
PLOT SCALE = 100,0010 ' / in.	CHECKED -	REVISED - E. GOMEZ 08-28-00
PLOT DATE = 3/19/2021	DATE - 09-18-94	REVISED - A. SCHUETZE 09-15-16

**STATE OF ILLINOIS  
DEPARTMENT OF TRANSPORTATION**

**SHORT TERM PAVEMENT MARKING LETTERS AND SYMBOLS**

SCALE: NONE SHEET 1 OF 1 SHEETS STA. TO STA.

F.A.P. RTE.	SECTION	COUNTY	TOTAL SHEETS	SHEET NO.
335	2021-032-R5	LAKE	29	26
<b>TC-16</b>		CONTRACT NO.	62N82	
ILLINOIS FED. AID PROJECT				



**NOTES:**

1. USE BLACK LETTERING ON ORANGE BACKGROUND.
2. ERECT SIGNS IN ADVANCE OF THE LOCATION FOR THE "ROAD CONSTRUCTION AHEAD" SIGN AT LOCATIONS AS DIRECTED BY THE ENGINEER.
3. ERECT SIGN ① WITH INSTALLED PANEL ② ONE WEEK PRIOR TO THE START OF CONSTRUCTION.
4. REMOVE PANEL ② SOON AFTER THE START OF CONSTRUCTION.
5. SEE SPECIAL PROVISION FOR "TEMPORARY INFORMATION SIGNING" FOR ADDITIONAL INFORMATION.
6. ONE SIGN ASSEMBLY EQUALS 25.70 SQ. FT. (2.3 SQ. M.)
7. SHALL BE PAID FOR AS TEMPORARY INFORMATION SIGNING.

ALL DIMENSIONS ARE IN INCHES (MILLIMETERS) UNLESS OTHERWISE SHOWN.

MODEL: Default  
 FILE NAME: p:\u0030\m000000.dwg  
 PROJECT: P:\u0030\m000000\DOT Documents\DOT Office\Drawings\1\Project\13221\CADD\Drawings\Design\DS-54.dwg

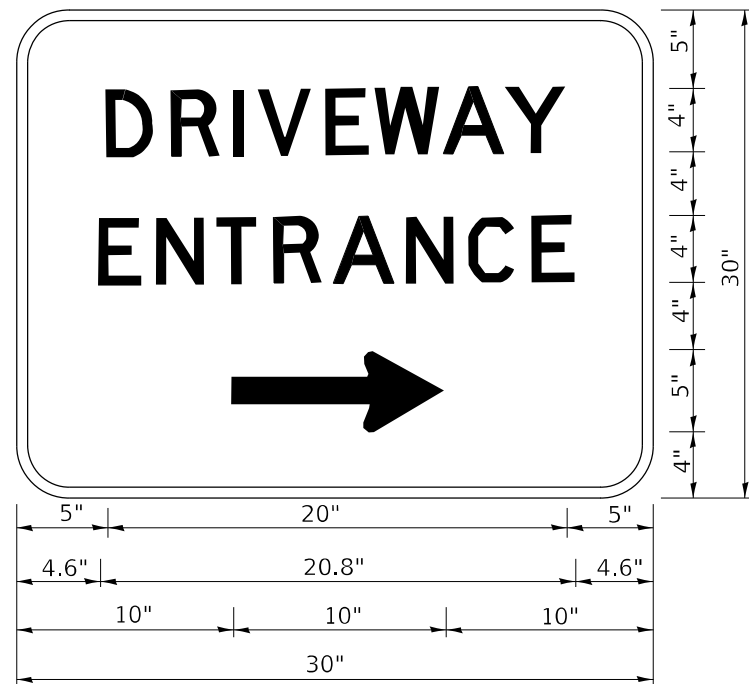
USER NAME = dumachla	DESIGNED -	REVISED - R. MIRS 09-15-97
	DRAWN -	REVISED - R. MIRS 12-11-97
PLOT SCALE = 100,0000 ' / in.	CHECKED -	REVISED - T. RAMMACHER 02-02-99
PLOT DATE = 3/19/2021	DATE -	REVISED - C. JUCIUS 01-31-07

**STATE OF ILLINOIS  
DEPARTMENT OF TRANSPORTATION**

**ARTERIAL ROAD  
INFORMATION SIGN**

SCALE: NONE SHEET 1 OF 1 SHEETS STA. TO STA.

F.A.P. RTE.	SECTION	COUNTY	TOTAL SHEETS	SHEET NO.
335	2021-032-RS	LAKE	29	27
<b>TC-22</b>			CONTRACT NO.	62N82
ILLINOIS FED. AID PROJECT				



3.0" RADIUS, 0.5" BORDER, WHITE ON GREEN; REFLECTORIZED  
 "DRIVEWAY" D; "ENTRANCE" D; STANDARD ARROW CUSTOM 12.0" x 5.0"

NOTES:

1. HALF OF THE SIGNS WILL REQUIRE A LEFT HAND FACING ARROW.
2. TWO SIGNS SHALL BE USED AT EACH COMMERCIAL ENTRANCE PLACED BACK-TO-BACK: ONE WITH A RIGHT HAND ARROW (SHOWN) SHALL BE PLACED ON THE NEAR RIGHT SIDE THE DRIVEWAY AND ONE WITH A LEFT HAND ARROW SHALL BE PLACED ON THE FAR LEFT SIDE OF THE DRIVEWAY.
3. SIGNS TO BE PAID FOR AS ITEM "TEMPORARY INFORMATION SIGNING".

MODEL: Default  
 FILE NAME: p:\u0000\workroom\dot\illinois.gov\pww\DOT\Documents\DOT\_Offices\Distric: 1\Projects\113221\CADD\Data\Design\Dist54.dgn

USER NAME = dumachla	DESIGNED -	REVISED - C. JUCIUS 02-15-07
	DRAWN -	REVISED -
PLOT SCALE = 100,0000' / in.	CHECKED -	REVISED -
PLOT DATE = 3/19/2021	DATE -	REVISED -

**STATE OF ILLINOIS  
 DEPARTMENT OF TRANSPORTATION**

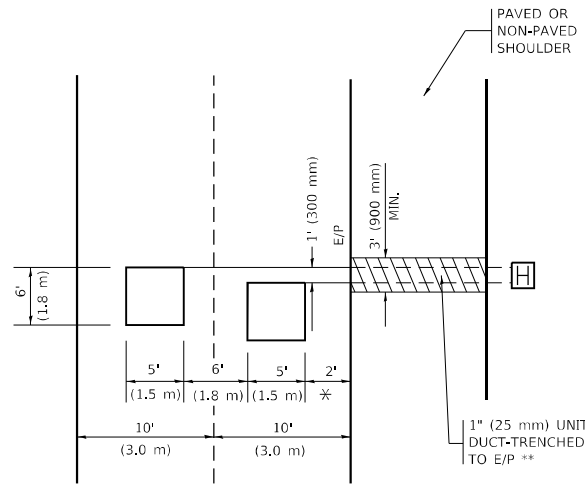
**DRIVEWAY ENTRANCE SIGNING**

SCALE: NONE SHEET 1 OF 2 SHEETS STA. TO STA.

F.A.P. RTE.	SECTION	COUNTY	TOTAL SHEETS	SHEET NO.
335	2021-032-RS	LAKE	29	28
<b>TC-26</b>			CONTRACT NO. 62N82	
ILLINOIS FED. AID PROJECT				

**LOOPS NEXT TO SHOULDERS**

PROVIDE A PAVEMENT REPLACEMENT NOTE WHICH SHOULD EQUAL 3' (900 mm) X WIDTH OF PAVED SHOULDER.

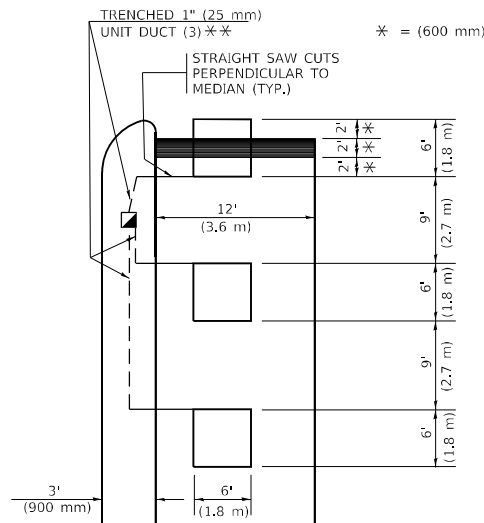


\* = (600 mm)

\*\* UNIT DUCT IS TO BE SHOWN ON PLAN SHEETS BUT SHALL NOT BE INCLUDED IN THE PAY ITEMS.

**LEFT TURN LANES WITH MEDIANS**  
**VOLUME DENSITY ("FAR OUT" DETECTION)**  
**ON SAME APPROACH**  
**(PROTECTED / PERMITTED LEFT TURN PHASING)**

HANDHOLE LOCATION MAY VARY DEPENDING ON GEOMETRICS AND DESIGN OF TRAFFIC SIGNALS. HEAVY-DUTY HANDHOLES TO BE USED WHEN THE MEDIAN IS MOUNTABLE. REFER TO STANDARD 814001 TO ENSURE THAT HANDHOLE FITS IN MEDIAN.

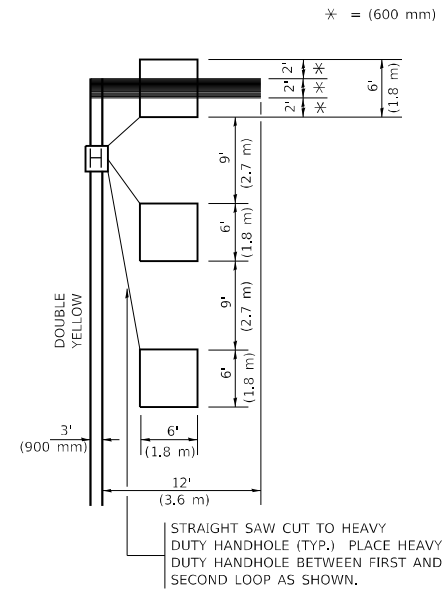


\* = (600 mm)

\*\* UNIT DUCT IS TO BE SHOWN ON PLAN SHEETS BUT SHALL NOT BE INCLUDED IN THE PAY ITEMS.

NOTE: DUAL LEFT TURNS NOT SHOWN REFER TO PLAN SHEET FOR DETECTOR LOOP REPLACEMENT

**LEFT TURN LANES WITHOUT MEDIANS**  
**VOLUME DENSITY ("FAR OUT" DETECTION)**  
**ON SAME APPROACH**  
**(PROTECTED / PERMITTED LEFT TURN PHASING)**



\* = (600 mm)

NOTE: DUAL LEFT TURNS NOT SHOWN REFER TO PLAN SHEET FOR DETECTOR LOOP REPLACEMENT

**NOTES:**

**VEHICLES LOOP DETECTORS**

- \* ALL LEAD IN CABLE SHALL BE TWO CONDUCTOR NO. 14 TWISTED, SHIELDED.
- \* EACH DETECTOR LOOP SHALL HAVE ITS OWN SAW CUT FROM THE LOOP TO THE EDGE OF PAVEMENT OR TO A HANDHOLE IN THE PAVEMENT.
- \* EACH DETECTOR LOOP SHALL HAVE ITS OWN ONE INCH (25 mm) UNIT DUCT BETWEEN THE EDGE OF PAVEMENT AND THE FIRST HANDHOLE OR JUNCTION BOX. EACH UNIT DUCT RUN SHALL BE SHOWN ON THE PLANS BY THE DESIGNER, BUT SHALL NOT BE PAID FOR SEPARATLY. THIS ITEM IS INCIDENTAL TO THE PAY ITEM FOR DETECTOR LOOPS.
- \* ONE DIMENSION OF ALL DETECTOR LOOPS SHALL BE SIX FEET (1.8 m)
- \* EACH LANE OF NON-LOCKING, PRESENCE DETECTION AND EACH LANE OF A DOUBLE LEFT TURN LANE REQUIRES A SEPARATE INDUCTIVE LOOP DETECTOR AND LEAD IN CABLE.
- \* WHEN NON-LOCKING, PRESENCE DETECTION IS USED, MORE THAN ONE LOOP PER LANE IS REQUIRED BEHIND THE STOP BAR (i.e. 1-1/2, 1-3/4, 2).
- \* WHEN SYSTEM LOOPS ARE REQUIRED ON AN APPROACH OF AN INTERSECTION, THE LOOPS USED FOR VOLUME DENSITY AND INTERSECTION TIMING SHALL ALSO BE USED AS SYSTEM DETECTORS. EACH ONE OF THESE TYPE OF LOOPS REQUIRES A SEPARATE TWO CONDUCTOR NO. 14 TWISTED SHIELDED CABLE AND A SEPARATE INDUCTIVE LOOP DETECTOR WHEN NEW CONTROLLERS ARE UTILIZED. THE DESIGNER SHALL LABEL THESE TYPES OF LOOPS AS "INTERSECTION AND SAMPLING (SYSTEM) DETECTORS" ON THE SIGNAL LAYOUT, THE INTERCONNECT PLAN AND THE SYSTEM CABLE PLAN. WHEN AN EXISTING CONTROLLER IS UTILIZED FOR THIS TYPE OF DETECTION, THE PAY ITEM "INDUCTIVE LOOP DETECTOR WITH SYSTEM OUTPUT" SHOULD BE USED.

**PLACEMENT OF DETECTORS**

THE FOLLOWING FIGURES REPRESENT THE MOST COMMON DETECTOR LOOP LOCATIONS AND SIZES. ADJUSTMENTS WILL BE NECESSARY FOR SPECIFIC GEOMETRIC CONSIDERATIONS.

LOCATIONS AND DEMENSIONS OF DETECTOR LOOPS ARE REQUIRED ON ALL SIGNAL LAYOUT PLAN SHEETS.

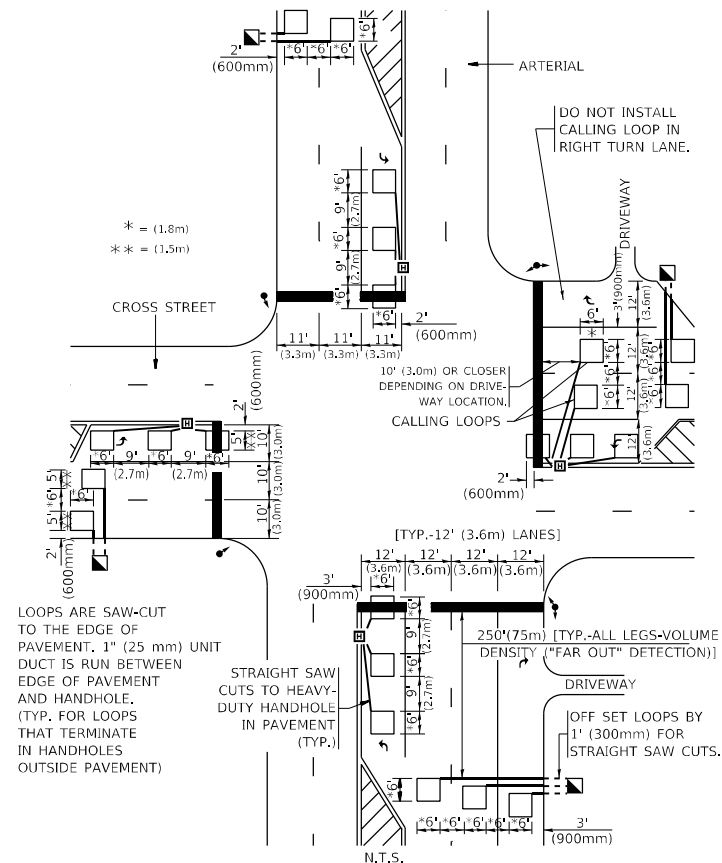
"FAR OUT" DETECTION REFERS TO LOCKING, PRESENCE TYPE DETECTION LOCATED IN THRU LANES, RIGHT TURN LANES, AND RIGHT TURN LANE TAPER AREAS (IF APPLICABLE), USUALLY 250' (75 m) IN ADVANCE OF STOP BARS. "UPTIGHT" DETECTION REFERS TO NON-LOCKING PRESENCE TYPE DETECTION LOCATED IN ALL LANES AND 10'-15' (3.0 m-4.5 m) BEHIND THE CROSSING STREET'S EDGE OF PAVEMENT EXTENDED.

**NOTE:**

ALL DETAILS AND NOTES SHOWN ARE FROM THE I.D.O.T. DISTRICT 1 TRAFFIC SIGNAL DESIGN GUIDELINES DATED JANUARY 1995

THIS DRAWING HAS BEEN PREPARED TO ASSIST THE RESIDENT ENGINEER FOR ALL ROADWAY RESURFACING OR S.M.A.R.T. PROJECTS WHERE THE DIMENSIONS ARE NOT SHOWN ON THE PLANS AND THE FINAL LOCATIONS FOR CROSSWALKS OR STOP BARS ARE NOT DETERMINED.

**ARTERIAL-VOLUME DENSITY ("FAR OUT" DETECTION)**  
**CROSS STREET-NON VOLUME DENSITY ("FAR OUT" DETECTION)**



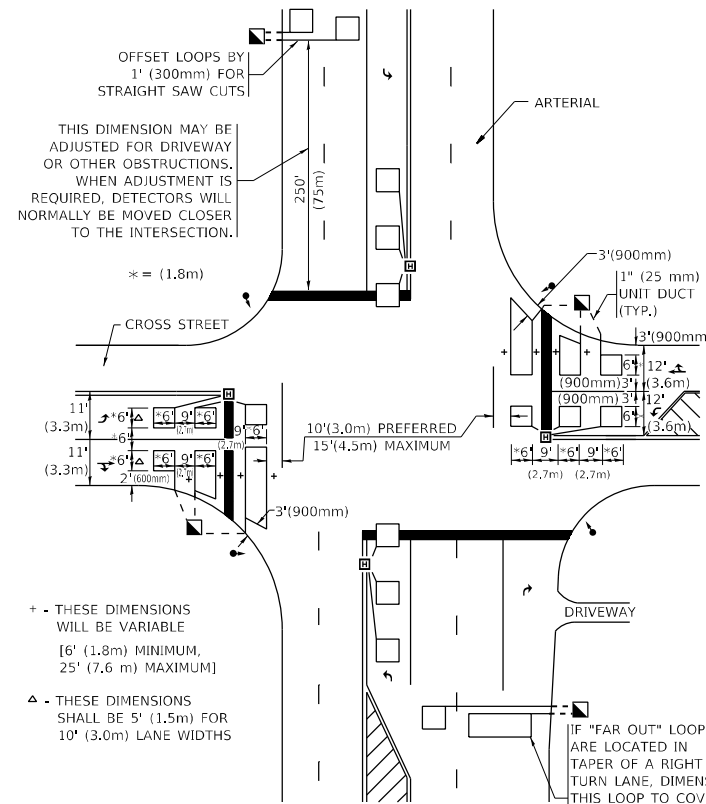
\* = (1.8m)  
 \*\* = (1.5m)

LOOPS ARE SAW-CUT TO THE EDGE OF PAVEMENT. 1" (25 mm) UNIT DUCT IS RUN BETWEEN EDGE OF PAVEMENT AND HANDHOLE. (TYP. FOR LOOPS THAT TERMINATE IN HANDHOLES OUTSIDE PAVEMENT)

STRAIGHT SAW CUTS TO HEAVY-DUTY HANDHOLE IN PAVEMENT (TYP.)

**DETAIL 1**  
 N.T.S.

**ARTERIAL-VOLUME DENSITY ("FAR OUT" DETECTION)**  
**CROSS STREET-NON VOLUME DENSITY ("UPTIGHT" PRESENCE DETECTION)**



OFFSET LOOPS BY 1' (300mm) FOR STRAIGHT SAW CUTS

THIS DIMENSION MAY BE ADJUSTED FOR DRIVEWAY OR OTHER OBSTRUCTIONS. WHEN ADJUSTMENT IS REQUIRED, DETECTORS WILL NORMALLY BE MOVED CLOSER TO THE INTERSECTION.

+ THESE DIMENSIONS WILL BE VARIABLE [6' (1.8m) MINIMUM, 25' (7.6 m) MAXIMUM]

Δ THESE DIMENSIONS SHALL BE 5' (1.5m) FOR 10' (3.0m) LANE WIDTHS

**DETAIL 2**  
 N.T.S.

MODEL: Default  
 FILE NAME: p:\pub\aroom\dot\illinois.gov\PIWDOT\Documents\DOT\_Offices\District 1\Projects\2021\13221\CaddData\Design\Dist1Sfd.dgn

USER NAME = dumachla	DESIGNED -	REVISED -
PLOT SCALE = 100,0000' / in.	DRAWN -	REVISED -
PLOT DATE = 3/19/2021	CHECKED - R.K.F.	REVISED -
	DATE -	REVISED -

**STATE OF ILLINOIS**  
**DEPARTMENT OF TRANSPORTATION**

<b>DISTRICT 1 - DETECTOR LOOP INSTALLATION</b>		F.A.P. RTE.	SECTION	COUNTY	TOTAL SHEETS	SHEET NO.
<b>DETAILS FOR ROADWAY RESURFACING</b>		335	2021-032-RS	LAKE	29	29
SCALE: NONE		<b>TS-07</b>		CONTRACT NO.	62N82	
SHEET 1 OF 1 SHEETS		ILLINOIS		FED. AID PROJECT		

