

STATE OF ILLINOIS  
DEPARTMENT OF TRANSPORTATION

F.A. RTE.	SECTION	COUNTY	TOTAL SHEETS	SHEET NO.
VAR	DIST 8 L TS 2021-2	VARIOUS	7	1
		ILLINOIS	CONTRACT NO. 76N61	

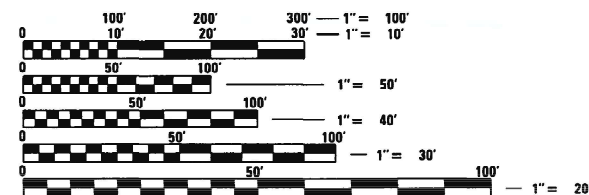
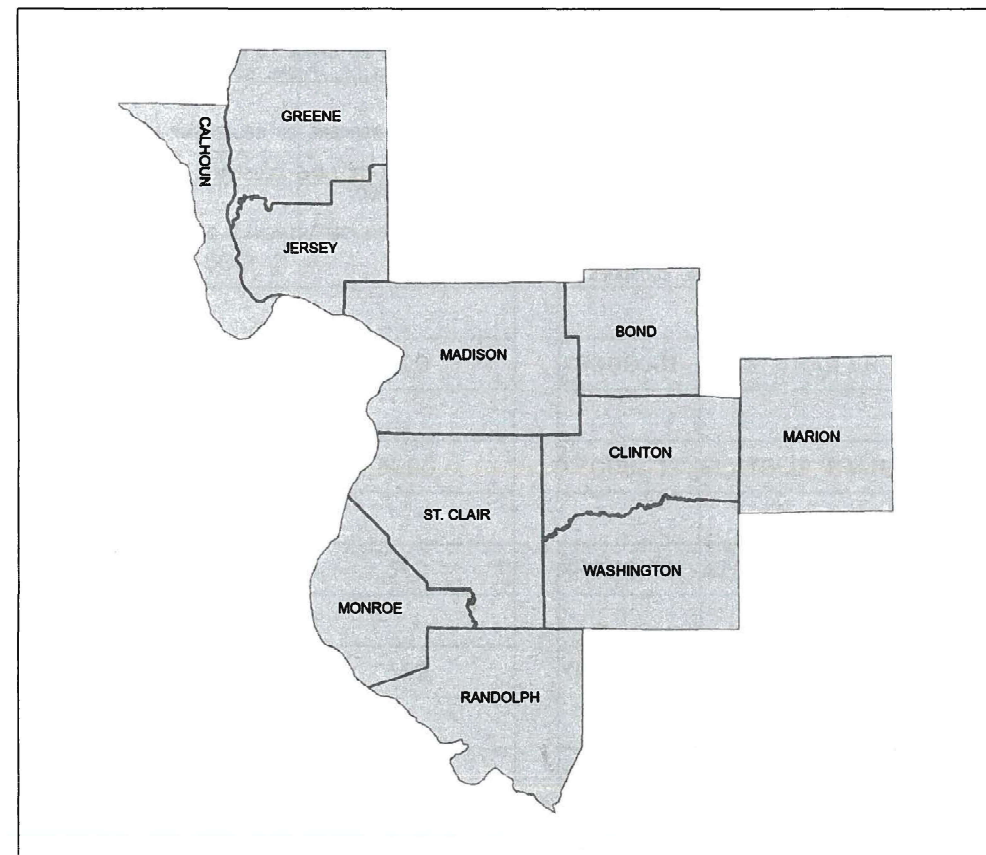
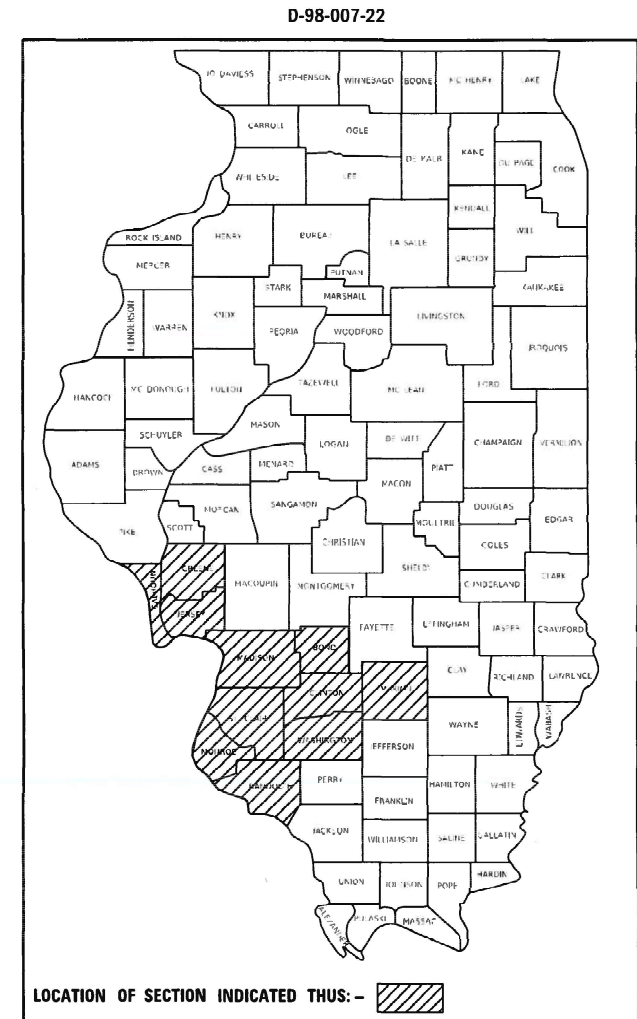
INDEX OF SHEETS:

- 1 COVER SHEET
- 2 HIGHWAY STANDARDS AND GENERAL NOTES
- 3-6 SUMMARY OF QUANTITIES
- 7 LUMINAIRE PERFORMANCE TABLES

# PROPOSED HIGHWAY PLANS

VARIOUS ROUTES  
SECTION DIST 8 L TS 2021-2  
HIGHWAY LIGHTING, TRAFFIC SIGNAL  
REPAIR & MAINTENANCE  
VARIOUS COUNTIES

C-98-035-22



FULL SIZE PLANS HAVE BEEN PREPARED USING STANDARD ENGINEERING SCALES. REDUCED SIZED PLANS WILL NOT CONFORM TO STANDARD SCALES. IN MAKING MEASUREMENTS ON REDUCED PLANS, THE ABOVE SCALES MAY BE USED.

J.U.L.I.E.  
JOINT UTILITY LOCATION INFORMATION FOR EXCAVATORS  
1-800-892-0123  
OR 811

PROJECT ENGINEER: HERVE GELIN (618)346-3175  
PROJECT MANAGER: MICHAEL PRESTON (618)346-3143

CONTRACT NO. 76N61

NOTE: WORK CAN BE LOCATED WITHIN ANY OF THE ABOVE NOTED COUNTIES WITHIN DISTRICT 8/REGION 5.

STATE OF ILLINOIS  
DEPARTMENT OF TRANSPORTATION

SUBMITTED March 18, 2021

*Keith Roberts*  
REGIONAL ENGINEER

May 7, 2021 *J. A. Etk*  
ENGINEER OF DESIGN AND ENVIRONMENT

May 7, 2021 *Jasmin Gun*  
DIRECTOR OF HIGHWAYS PROJECT IMPLEMENTATION

PRINTED BY THE AUTHORITY  
OF THE STATE OF ILLINOIS

HIGHWAY STANDARDS

701001-02	701400-10	701456-05
701006-05	701401-12	701601-09
701101-05	701406-12	701606-10
701106-02	701421-08	701701-10
701201-05	701422-10	701901-08
701206-05	701446-11	886001-01
701301-04	701451-05	886006-01
		821101-02
		838001-01

COMMITMENTS

NONE

1. THE LOCATIONS OF THE REPAIR AREAS SHALL BE DETERMINED BY THE ENGINEER/DEPARTMENT.
2. NO MATERIAL SHALL BE LEFT ON OR NEAR THE ROADWAY DURING NON-WORKING HOURS.
3. ANY NECESSARY TRAFFIC CONTROL WILL BE PROVIDED BY THE CONTRACTOR, APPROPRIATE STANDARDS ARE LISTED.
4. ILLINOIS STATE LAW REQUIRES A 48-HOUR NOTICE TO BE GIVEN TO UTILITIES BEFORE DIGGING. FIELD MARKING OF FACILITIES OF MEMBERS OF J.U.L.I.E. MAY BE OBTAINED BY CONTACTING J.U.L.I.E. (PHONE 800 892-0123 OR 811). FOR NON-MEMBERS, CONTACT THE UTILITY COMPANY DIRECTLY.
5. A FLAGGER SHALL BE REQUIRED AT ALL TIMES WHEN WORKERS OR EQUIPMENT ARE ENCROACHING ON THE LANE OF TRAFFIC.
6. 45 AND 55 MPH SIGNS ARE INCLUDED IN ALL INTERSTATE LANE CLOSURES. IF THE LANE CLOSURE DURATION IS LESS THAN 4 HOURS, THE 45 AND 55 MPH SIGNS ARE NOT REQUIRED.
7. ANY WORK ORDER MAY BE CANCELED AT THE ENGINEER'S/DEPARTMENT'S DISCRETION.
8. NO OVERNIGHT LANE CLOSURES WILL BE ALLOWED.

MODEL: Default  
 FILE NAME: dw:\planroom.dwg\illinois.gov\PI\DOT\Documents\DOT Offices\District 8\Projects\876N61\CADD\data\Electrical\876N61.rts.dgn

REV. - MS

USER NAME = prestonme DESIGNED - DRAWN - PLOT SCALE = 100.0000' / in. CHECKED - PLOT DATE = 3/12/2021 DATE -	REVISED - REVISED - REVISED - REVISED -	<b>STATE OF ILLINOIS DEPARTMENT OF TRANSPORTATION</b>	<b>HIGHWAY STANDARDS AND GENERAL NOTES</b>	F.A. RTE. VAR.	SECTION DIST 8 L TS 2021-2	COUNTY VARIOUS	TOTAL SHEETS 7	SHEET NO. 2
SCALE:      SHEET 2 OF 7 SHEETS      STA.      TO STA.				ILLINOIS FED. AID PROJECT      CONTRACT NO. 76N61				

CODE NO.	ITEM	UNIT	CONSTRUCTION CODE	
			URBAN TOTAL QUANTITY	100% STATE 0021
80300100	LOCATING UNDERGROUND CABLE	FOOT	200,000	200,000
82110005	LUMINAIRE, LED, ROADWAY, OUTPUT DESIGNATION E	EACH	5	5
82110007	LUMINAIRE, LED, ROADWAY, OUTPUT DESIGNATION G	EACH	5	5
82110008	LUMINAIRE, LED, ROADWAY, OUTPUT DESIGNATION H	EACH	5	5
82110032	LUMINAIRE, LED, SIGN LIGHTING, OUTPUT DESIGNATION E	EACH	5	5
87000240	ELECTRIC CABLE ASSEMBLY IN CONDUIT, 600V (XLP-TYPE TC) 2/C NO. 2 AND NO. 4	FOOT	500	500
87000405	ELECTRIC CABLE ASSEMBLY IN TRENCH, 600V (XLP-TYPE TC) 2/C NO. 2 AND NO. 4	FOOT	500	500
87000775	ELECTRIC CABLE ASSEMBLY IN CONDUIT, 600V (XLP-TYPE TC) 2/C NO. 2 AND NO. 6	FOOT	500	500
87000885	ELECTRIC CABLE ASSEMBLY IN CONDUIT, 600V (XLP-TYPE TC) 2/C NO. 6 AND NO. 8	FOOT	500	500
87005275	ELECTRIC CABLE ASSEMBLY IN TRENCH, 600V (XLP-TYPE TC) 2/C NO. 4 AND NO. 6	FOOT	500	500
87005385	ELECTRIC CABLE ASSEMBLY IN TRENCH, 600V (XLP-TYPE TC) 2/C NO. 6 AND NO. 8	FOOT	500	500
* X0327495	JOURNEYMAN ELECTRICIAN	HOUR	3500	3500
* X0327496	APPRENTICE ELECTRICIAN	HOUR	350	350
* X0327497	PICK-UP TRUCK	HOUR	550	550
* X0327500	ARROWBOARD (TRAILER MOUNTED)	HOUR	20	20

\* REQUIRES SPECIAL PROVISION

CODE NO.	ITEM	UNIT	CONSTRUCTION CODE	
			URBAN TOTAL QUANTITY	100% STATE 0021
* X0327501	ATTENUATOR, CRASH (TRUCK MOUNTED)	HOUR	20	20
* X0327734	TRUCK CRANE	HOUR	50	50
* X1400096	LED LAMP MODULE REPLACEMENT	EACH	300	300
* X7010218	TRAFFIC CONTROL AND PROTECTION, (SPECIAL)	EACH	28	28
* X8860400	DETECTOR LOOP, SPECIAL	FOOT	5000	5000
XP000015	DIGGER DERRICK	HOUR	20	20
XP000028	LABOR	HOUR	20	20
XP000029	BUCKET TRUCK/VAN FOR TRAFFIC SIGNALS	HOUR	700	700
XP000030	BUCKET TRUCK FOR HIGHWAY LIGHTING	HOUR	20	20
XP000031	POLE TRAILER	HOUR	20	20
XP000032	FLATBED TRAILER	HOUR	50	50
XP000101	ATQ 5A FUSE 200	EACH	300	300
XP000102	FNQ 5A FUSE	EACH	300	300
XP000104	FNM 10A FUSE	EACH	10	10

REV. - MS

M:\Projects\DOT\Documents\DOT\_Offices\District\_8\Projects\DOT\_76N61\CADData\Electrical\0876N61-TS.dgn

USER NAME = prestonme	DESIGNED -	REVISED -
PLOT SCALE = 100.0000' / in.	DRAWN -	REVISED -
PLOT DATE = 3/12/2021	CHECKED -	REVISED -
	DATE -	REVISED -

**STATE OF ILLINOIS  
DEPARTMENT OF TRANSPORTATION**

**SUMMARY OF QUANTITIES**

SCALE: SHEET 3 OF 7 SHEETS STA. TO STA.

F.A. RTE.	SECTION	COUNTY	TOTAL SHEETS	SHEET NO.
VAR	DIST 8 L TS 2021-2	VARIOUS	7	3
			CONTRACT NO. 76N61	
ILLINOIS FED. AID PROJECT				

CODE NO.	ITEM	UNIT	CONSTRUCTION CODE	
			URBAN TOTAL QUANTITY	100% STATE 0021
XP000105	FRNR 60A FUSE	EACH	10	10
XP000106	BUCHANAN FUSEHOLDER KIT	EACH	50	50
XP000115	150W HPS LAMP	EACH	100	100
XP000116	250W HPS LAMP	EACH	100	100
XP000118	400W HPS LAMP	EACH	350	350
XP000119	150W 240/480V BALLAST KIT	EACH	25	25
XP000120	250W 240/480V BALLAST KIT	EACH	50	50
XP000122	400W 240/480V BALLAST KIT	EACH	150	150
XP000123	SD-100 BU STARTER	EACH	5	5
XP000124	SURGE ARRESTOR (EDCO MODEL SHA-XXX3) X=20/240/480 VOLT	EACH	5	5
XP000125	PHOTO CONTROL, 105V-285V (ALR-MODEL SSTPV-ON)	EACH	5	5
XP000129	60A LIGHTING CONTACTOR	EACH	30	30
XP000130	100A LIGHTING CONTACTOR	EACH	10	10
XP000132	50A CIRCUIT BREAKER, 1P	EACH	60	60

CODE NO.	ITEM	UNIT	CONSTRUCTION CODE	
			URBAN TOTAL QUANTITY	100% STATE 0021
XP000135	50A CIRCUIT BREAKER, 2P	EACH	5	5
XP000137	150A CIRCUIT BREAKER, 2P	EACH	30	30
XP000138	200A CIRCUIT BREAKER, 2P	EACH	30	30
XP000139	BREAKAWAY COUPLING, 1"	EACH	30	30
XP000140	1/4" X 1/4" STAINLESS STEEL MESH	SQ FT	10	10
XP000141	ALUMINUM SIGNAL BASE, SQUARE (PELCO)	EACH	80	80
XP000142	ALUMINUM SIGNAL POST, 13', SCH 80 (PELCO)	EACH	25	25
XP000145	MAST ARM BRACKET, 3 SECTION (PELCO AB 11 6)	EACH	30	30
XP000146	MAST ARM BRACKET, 4 SECTION (PELCO AB 116)	EACH	30	30
XP000147	MAST ARM BRACKET, 5 SECTION (PELCO AB 116)	EACH	40	40
XP000161	LAMP, QUARTZ HALOGEN, 43W @, 10.8V (GE OR EQUIVALENT)	EACH	80	80
XP000164	SIGNAL HEAD, POLYCARBONATE, LED, 1-SECTION, 12", R OR Y (ECONOLITE OR MCCAIN)	EACH	20	20
XP000165	SIGNAL HEAD, POLYCARBONATE, LED, 3-SECTION, 12", (ECONOLITE OR MCCAIN)	EACH	120	120
XP000166	SIGNAL HEAD, POLYCARBONATE, LED, 4-SECTION, 12", (ECONOLITE OR MCCAIN)	EACH	20	20

MODEL: Default  
 FILE NAME: p:\data\m61\7661\p\p\DOT\Documents\DOT - Office\Drawings\Project\07661\CD\Drawings\Electrical\07661-15.dgn

USER NAME = preston	DESIGNED -	REVISED -
PLOT SCALE = 100,0000 ' / in.	DRAWN -	REVISED -
PLOT DATE = 3/12/2021	CHECKED -	REVISED -
	DATE -	REVISED -

**STATE OF ILLINOIS  
DEPARTMENT OF TRANSPORTATION**

**SUMMARY OF QUANTITIES**

SCALE: SHEET 4 OF 7 SHEETS STA. TO STA.

F.A. RTE.	SECTION	COUNTY	TOTAL SHEETS	SHEET NO.
	DIST 8 L TS 2021-2	VARIOUS	7	4
			CONTRACT NO. 76N61	
ILLINOIS FED. AID PROJECT				



CODE NO.	ITEM	UNIT	CONSTRUCTION CODE	
			URBAN TOTAL QUANTITY	100% STATE 0021
XP000167	SIGNAL HEAD, POLYCARBONATE, LED, 5-SECTION, 12", (ECONOLITE OR MCCAIN)	EACH	30	30
XP000168	PEDESTRIAN HEAD, POLYCARBONATE, LED, 2-SECTION, 12", (ECONOLITE OR MCCAIN)	EACH	40	40
XP000170	ELECTRIC CABLE, 2/C, #14, TW, SH	FEET	3000	3000
XP000171	ELECTRIC CABLE, 3 PR, #18, TW, SH	FEET	10	10
XP000172	ELECTRIC CABLE, 5 PR, #18, TW, SH	FEET	10	10
XP000173	ELECTRIC CABLE, 6 PR, #18, TW, SH	FEET	2200	2200
XP000174	ELECTRIC CABLE, 2/C, #14	FEET	1500	1500
XP000175	ELECTRIC CABLE, 3/C, #14	FEET	1500	1500
XP000176	ELECTRIC CABLE, 5/C, #14	FEET	5000	5000
XP000177	ELECTRIC CABLE, 7/C, #14	FEET	2000	2000
XP000179	GROUND ROD, 8', COPPER CLAD	EACH	20	20
XP000180	SPLICE KIT (3-M SCOTCHCAST #72-N1)	EACH	10	10
XP000181	LOOP SEALANT (BONDO P606)	GALLON	10	10
XP000183	BACKPLATE, ABS PLASTIC, 3-SECTION (PELCO)	EACH	10	10

CODE NO.	ITEM	UNIT	CONSTRUCTION CODE	
			URBAN TOTAL QUANTITY	100% STATE 0021
XP000184	BACKPLATE, ABS PLASTIC, 4-SECTION (PELCO)	EACH	10	10
XP000185	BACKPLATE, ABS PLASTIC, 5-SECTION (PELCO)	EACH	10	10
XP000186	J BOX, NEMA, 4X, SS, 6"X8"X4", W/ ALUMINUM BACKPLATE & LOC	EACH	10	10
XP000187	HANDHOLE, FRAME & COVER (NEENAH R-6660-JP)	EACH	5	5
XP000188	HANDHOLE, COVER ONLY (NEENAH R-6660-JP)	EACH	5	5
XP000191	SIGN, ILLUMINATED, FIBEROPTIC-TYPE, 24"X30" "NO LEFT/RIGHT TURN" OR "LT TURN YIELD"	EACH	5	5
XP000192	SIGN, ILLUMINATED, FIBEROPTIC-TYPE, 24"X30" "NO LEFT/RIGHT TURN" OR "LT TURN YIELD"	EACH	5	5
XP000193	MONITOR, NEMA CONFLICT, 12 CHANNEL (EDI SSM-12E)	EACH	10	10
XP000194	RELAY, FLASH TRANSFER, (MIDTEX 136-62T3A1)	EACH	5	5
XP000195	DETECTOR, NEMA DIGITAL, 1-CH, SHELF MOUNT (DETECTOR SYSTEMS OR RENO)	EACH	5	5
XP000196	DETECTOR, NEMA DIGITAL, 2-CH, RACK MOUNT (DETECTOR SYSTEMS OR RENO)	EACH	5	5
XP000197	DETECTOR, POWER SUPPLY, RACK MOUNT (DETECTOR SYSTEMS OR RENO)	EACH	5	5
XP000198	CABINET, SIGNAL CONTROLLER, ALUM., TYPE IV, W/MONITOR & ALL PLUG-INS, COMPLETE (ECONOLITE)	EACH	5	5
XP000199	FLASHER, NEMA	EACH	5	5

MODEL: Default  
 FILE NAME: p:\pub\amr\amr.dwg  
 PROJECT: 076961\CD\00Data\Electrical\076961-TS.dwg  
 OFFICE: District 8  
 DATE: 3/12/2021

USER NAME = prestanne	DESIGNED -	REVISED -
PLOT SCALE = 100,0000' / in.	DRAWN -	REVISED -
PLOT DATE = 3/12/2021	CHECKED -	REVISED -
	DATE -	REVISED -

**STATE OF ILLINOIS  
DEPARTMENT OF TRANSPORTATION**

**SUMMARY OF QUANTITIES**

SCALE: SHEET 5 OF 7 SHEETS STA. TO STA.

F.A. RTE.	SECTION	COUNTY	TOTAL SHEETS	SHEET NO.
	DIST 8 L TS 2021-2	VARIOUS	7	5
			CONTRACT NO. 76N61	
ILLINOIS FED. AID PROJECT				

CODE NO.	ITEM	UNIT	CONSTRUCTION CODE	
			URBAN TOTAL QUANTITY	100% STATE 0021
XP000200	LOAD SWITCH, NEMA	EACH	20	20
XP000201	CONTROLLER, SIGNAL, (ECONOLITE COBALT 2100)	EACH	1	1
XP000203	COLD GALVANIZING, SPRAY CAN	EACH	5	5
XP000204	ALUMINUM LIGHT POLE, 45', COMPLETE, ROUND, W 15' TRUSS STYLE ARM, W/T TRANSFORMER BASE, 17" B.C.	EACH	10	10
XP000205	ALUMINUM LIGHT POLE MAST ARM, 15', TRUSS STYLE	EACH	10	10
XP000207	ALUMINUM LIGHT POLE, 45', COMPLETE, RD, W/ TENON TOP, W/T BASE, 17" B.C., DK. BRONZE POWDER COAT	EACH	10	10
XP000209	UPPER AND LOWER ARM ASSEMBLY, UNPAINTED ALUMINUM	EACH	80	80
XP000210	FLASHER CONTROLLER CABINET ASSEMBLY, NEMA (PELCO SE-1005 OR EQUIVALENT)	EACH	10	10
XP000300	TRAFFIC SIGNAL RELAMPING	EACH	5	5
XP000301	TRAFFIC SIGNAL LAMP REPLACEMENT	EACH	5	5
XP000302	FLASHING BEACON INSPECTION	EACH	5	5
XP000303	TOWER LIGHTING INSPECTION	EACH	5	5
XP000304	REPLACE SERVICE INSTALLATION, COMPLETE	EACH	5	5
XP000307	REPAIR TRAFFIC SIGNAL KNOCKDOWN	EACH	80	80

CODE NO.	ITEM	UNIT	CONSTRUCTION CODE	
			URBAN TOTAL QUANTITY	100% STATE 0021
XP000308	REPAIR FLASHING BEACON KNOCKDOWN	EACH	10	10
XP000309	REPAIR HIGHWAY LIGHT POLE KNOCKDOWN	EACH	50	50
XP000310	REPLACE HIGHWAY LIGHT POLE BREAKAWAY DEVICE, COUPLING	EACH	5	5
XP000311	REPLACE HIGHWAY LIGHT POLE BREAKAWAY DEVICE, TRANSFORMER BASE	EACH	5	5
XP000312	REPLACE TRAFFIC SIGNAL POST BASE ASSEMBLY	EACH	5	5

M:\Projects\2021\76N61\Drawings\DOT\Office\District 8\Projects\DOT\76N61\CADD\Drawings\Electrical\DOT\76N61-TS.dgn  
 FILE NAME: p:\planroom.dat  
 ILLINOIS GOV. PWDOT\Documents\DOT Office\District 8\Projects\DOT\76N61\CADD\Drawings\Electrical\DOT\76N61-TS.dgn

USER NAME = prestonme	DESIGNED -	REVISED -
PLOT SCALE = 100.0000' / in.	DRAWN -	REVISED -
PLOT DATE = 3/12/2021	CHECKED -	REVISED -
	DATE -	REVISED -

**STATE OF ILLINOIS  
DEPARTMENT OF TRANSPORTATION**

**SUMMARY OF QUANTITIES**

SCALE: SHEET 6 OF 7 SHEETS STA. TO STA.

F.A. RTE.	SECTION	COUNTY	TOTAL SHEETS	SHEET NO.
VAR	DIST 8 L TS 2021-2	VARIOUS	7	6
			CONTRACT NO. 76N61	
ILLINOIS FED. AID PROJECT				

ILLINOIS DEPARTMENT OF TRANSPORTATION  
LUMINAIRE PERFORMANCE TABLE  
LED replacement for 250W HPS Horizontal Mount luminaire

GIVEN CONDITIONS		
ROADWAY DATA	Lane Width	12 ft
	Number of Lanes (in One Direction Only)	3
	Median Width	0 ft
	I.E.S. Surface Classification	R3
	Q-Zero Value	.07
LIGHT POLE DATA	Mounting Height	45 ft
	Luminaire Overhang From Edge of Pavement (White Line)	0 ft
LUMINAIRE DATA	Luminaire Type	LED
	I.E.S. Vertical Distribution	Medium
	BUG Rating	U = 0
	I.E.S. Lateral Distribution	Type II or III
	Total Light Loss Factor	0.684
LAYOUT DATA	Spacing	160 ft
	Configuration	One Sided

NOTES:  
1. Total light loss factor is the product of "Lumen Depreciation" (LLD) = 0.90, "Dirt Depreciation" (LDF) = 0.80, and "Equipment factors" (EF) = 0.95.

PERFORMANCE REQUIREMENTS

NOTE: These performance requirements shall be the acceptable standards of photometric performance for the luminaire, based on the given conditions listed above.

ILLUMINANCE	Average Illuminance, $E_{AVE}$	0.9 fc to 1.4 fc
	Uniformity Ratio, $E_{AVE}/E_{MIN}$	$\leq 3.0:1$
LUMINANCE	Average Luminance, $L_{AVE}$	0.6 cd/m <sup>2</sup> to 0.9 cd/m <sup>2</sup>
	Uniformity Ratio, $L_{AVE}/L_{MIN}$	$\leq 3.5:1$
	Uniformity Ratio, $L_{MAX}/L_{MIN}$	$\leq 6.0:1$
	Max. Veiling Luminance Ratio, $L_v/L_{AVE}$	$\leq 0.3:1$

ILLINOIS DEPARTMENT OF TRANSPORTATION  
LUMINAIRE PERFORMANCE TABLE  
LED replacement for 400W HPS Horizontal Mount luminaire

GIVEN CONDITIONS		
ROADWAY DATA	Lane Width	12 ft
	Number of Lanes (in One direction Only)	4
	Median Width	0 ft
	I.E.S. Surface Classification	R3
	Q-Zero Value	.07
LIGHT POLE DATA	Mounting Height	45 ft
	Luminaire Overhang From Edge of Pavement (White Line)	0 ft
LUMINAIRE DATA	naire Type	LED
	I.E.S. Vertical Distribution	Medium
	BUG Rating	U = 0
	I.E.S. Lateral Distribution	Type II or III
	Total Light Loss Factor	0.684
LAYOUT DATA	Spacing	240 ft
	Configuration	One Sided

NOTES:  
1. Total light loss factor is the product of "Lumen Depreciation" (LLD) = 0.90, "Dirt Depreciation" (LDF) = 0.80, and "Equipment factors" (EF) = 0.95.

PERFORMANCE REQUIREMENTS

NOTE: These performance requirements shall be the acceptable standards of photometric performance for the luminaire, based on the given conditions listed above.

ILLUMINANCE	Average Illuminance, $E_{AVE}$	0.9 fc to 1.4 fc
	Uniformity Ratio, $E_{AVE}/E_{MIN}$	$\leq 3.0:1$
LUMINANCE	Average Luminance, $L_{AVE}$	0.6 cd/m <sup>2</sup> to 0.9 cd/m <sup>2</sup>
	Uniformity Ratio, $L_{AVE}/L_{MIN}$	$\leq 3.5:1$
	Uniformity Ratio, $L_{MAX}/L_{MIN}$	$\leq 6.0:1$
	Max. Veiling Luminance Ratio, $L_v/L_{AVE}$	$\leq 0.3:1$

ILLINOIS DEPARTMENT OF TRANSPORTATION  
LUMINAIRE PERFORMANCE TABLE  
LED Replacement for 250W HPS Multi-Mount Luminaire  
(replacement luminaire shall be mounted horizontally)

GIVEN CONDITIONS		
ROADWAY DATA	Lane Width	12 ft
	Number of Lanes (One Direction Only)	3
	Median Width	0 ft
	I.E.S. Surface Classification	R3
	Q-Zero Value	.07
LIGHT POLE DATA	Mounting Height	45 ft
	Luminaire Overhang From Edge of Pavement (White Line)	-30 ft
LUMINAIRE DATA	Luminaire Type	LED
	I.E.S. Vertical Distribution	Medium
	BUG Rating	U = 0
	I.E.S. Lateral Distribution	Type III or IV
	Total Light Loss Factor	0.684
LAYOUT DATA	Spacing	145 ft
	Configuration	One Sided

NOTES:  
1. Total light loss factor is the product of "Lumen Depreciation" (LLD) = 0.90, "Dirt Depreciation" (LDF) = 0.80, and "Equipment factors" (EF) = 0.95.

PERFORMANCE REQUIREMENTS

NOTE: These performance requirements shall be the acceptable standards of photometric performance for the luminaire, based on the given conditions listed above.

ILLUMINANCE	Average Illuminance, $E_{AVE}$	0.9 fc to 1.4 fc
	Uniformity Ratio, $E_{AVE}/E_{MIN}$	$\leq 3.0:1$
LUMINANCE	Average Luminance, $L_{AVE}$	0.6 cd/m <sup>2</sup> to 0.9 cd/m <sup>2</sup>
	Uniformity Ratio, $L_{AVE}/L_{MIN}$	$\leq 3.5:1$
	Uniformity Ratio, $L_{MAX}/L_{MIN}$	$\leq 6.0:1$
	Max. Veiling Luminance Ratio, $L_v/L_{AVE}$	$\leq 0.3:1$

ILLINOIS DEPARTMENT OF TRANSPORTATION  
LUMINAIRE PERFORMANCE TABLE  
LED Replacement for 400W HPS Multi-Mount Luminaire  
(replacement luminaire shall be mounted horizontally)

GIVEN CONDITIONS		
ROADWAY DATA	Lane Width	12 ft
	Number of Lanes (in One Direction Only)	4
	Median Width	0 ft
	I.E.S. Surface Classification	R3
	Q-Zero Value	.07
LIGHT POLE DATA	Mounting Height	45 ft
	Luminaire Overhang From Edge of Pavement (White Line)	-30 ft
LUMINAIRE DATA	Luminaire Type	LED
	I.E.S. Vertical Distribution	Medium
	BUG Rating	U = 0
	I.E.S. Lateral Distribution	Type III or IV
	Total Light Loss Factor	0.684
LAYOUT DATA	Spacing	155 ft
	Configuration	One Sided

NOTES:  
1. Total light loss factor is the product of "Lumen Depreciation" (LLD) = 0.90, "Dirt Depreciation" (LDF) = 0.80, and "Equipment factors" (EF) = 0.95.

PERFORMANCE REQUIREMENTS

NOTE: These performance requirements shall be the acceptable standards of photometric performance for the luminaire, based on the given conditions listed above.

ILLUMINANCE	Average Illuminance, $E_{AVE}$	0.9 fc to 1.4 fc
	Uniformity Ratio, $E_{AVE}/E_{MIN}$	$\leq 3.0:1$
LUMINANCE	Average Luminance, $L_{AVE}$	0.6 cd/m <sup>2</sup> to 0.9 cd/m <sup>2</sup>
	Uniformity Ratio, $L_{AVE}/L_{MIN}$	$\leq 3.5:1$
	Uniformity Ratio, $L_{MAX}/L_{MIN}$	$\leq 6.0:1$
	Max. Veiling Luminance Ratio, $L_v/L_{AVE}$	$\leq 0.3:1$

ILLINOIS DEPARTMENT OF TRANSPORTATION  
LUMINAIRE PERFORMANCE TABLE  
LED Replacement for 150W HPS Underpass Luminaire

GIVEN CONDITIONS		
ROADWAY DATA	Lane Width	12 ft
	Number of Lanes (in One Direction Only)	2
	Median Width	0 ft
	I.E.S. Surface Classification	R3
	Q-Zero Value	.07
LIGHT POLE DATA	Mounting Height	16 ft
	Luminaire Overhang From Edge of Pavement (White Line)	-20 ft
LUMINAIRE DATA	Luminaire Type	LED
	I.E.S. Vertical Distribution	Medium
	BUG Rating	U = 0
	I.E.S. Lateral Distribution	Type III or IV
	Total Light Loss Factor	0.684
LAYOUT DATA	Spacing	60 ft
	Configuration	One Sided

NOTES:  
1. Total light loss factor is the product of "Lumen Depreciation" (LLD) = 0.90, "Dirt Depreciation" (LDF) = 0.80, and "Equipment factors" (EF) = 0.95.

PERFORMANCE REQUIREMENTS

NOTE: These performance requirements shall be the acceptable standards of photometric performance for the luminaire, based on the given conditions listed above.

LUMINANCE	Average Luminance, $L_{AVE}$	0.6 cd/m <sup>2</sup> to 0.9 cd/m <sup>2</sup>
	Uniformity Ratio, $L_{AVE}/L_{MIN}$	$\leq 3.5:1$
	Uniformity Ratio, $L_{MAX}/L_{MIN}$	$\leq 6.0:1$
	Max. Veiling Luminance Ratio, $L_v/L_{AVE}$	$\leq 0.3:1$

MODEL: Default  
FILE NAME: \\paulammon.dot.illinois.gov\PIWDOT\Documents\DOT - Office\District 8\Projects\0876N61\CADD\0876N61-TS.dgn

USER NAME = prestanme	DESIGNED -	REVISED -
	DRAWN -	REVISED -
PLOT SCALE = 100,0000 ' / in.	CHECKED -	REVISED -
PLOT DATE = 3/12/2021	DATE -	REVISED -

STATE OF ILLINOIS  
DEPARTMENT OF TRANSPORTATION

SUMMARY OF QUANTITIES

SCALE: SHEET 7 OF 7 SHEETS STA. TO STA.

F.A. RTE.	SECTION	COUNTY	TOTAL SHEETS	SHEET NO.
	DIST 8 L TS 2021-2	VARIOUS	7	7
ILLINOIS FED. AID PROJECT			CONTRACT NO. 76N61	