

COUNTY	ROUTE	SECTION	SHT. NO.
ADAMS	FAS 1588	19-00062-05-FP	1
COVER SHEET			
TOTAL NO. SHEETS - 18			

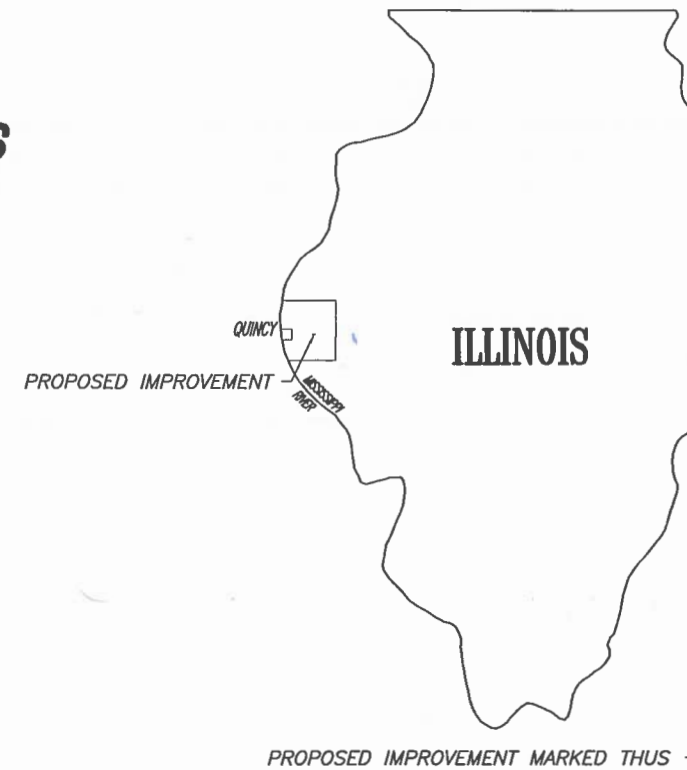
**INDEX OF SHEETS**

06-11-2021 LETTING ITEM 139

SHEET NO.	SHEET
1	COVER SHEET
2	SUMMARY OF QUANTITIES SCHEDULE OF QUANTITIES
3-4	TYPICAL SECTIONS
5	GENERAL NOTES TRAFFIC CONTROL & PROTECTION HMA MIXTURE REQUIREMENTS APPLICATION RATES
6-7	PLAN SHEET - RESURFACING
8-9	PAVEMENT MARKINGS
10	HMA ENTRANCE RESURFACING
11	HMA MAILBOX TURNOUTS
12	BUTT JOINT - FEATHER EDGE DETAILS
13-18	CROSS SECTIONS - ROADWAY

**STATE OF ILLINOIS  
DEPARTMENT OF TRANSPORTATION  
DIVISION OF HIGHWAYS  
PLANS FOR PROPOSED**

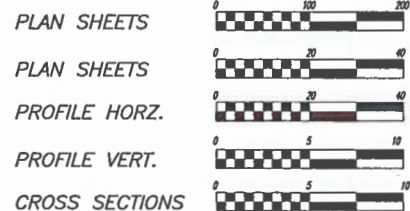
**SURFACE TRANSPORTATION / RURAL PROGRAM FUNDS  
ADAMS COUNTY SEC. 19-00062-05-FP  
FAS ROUTE 1588 (CO. HWY 48)  
PROJECT NO. RC5A(672)  
JOB NO. C-96-001-22**



**STANDARDS**

- STANDARD 442201-03
- STANDARD 701011-04
- STANDARD 701201-05
- STANDARD 701301-04
- STANDARD 701306-04
- STANDARD 701311-03
- STANDARD 701901-08
- STANDARD 780001-05

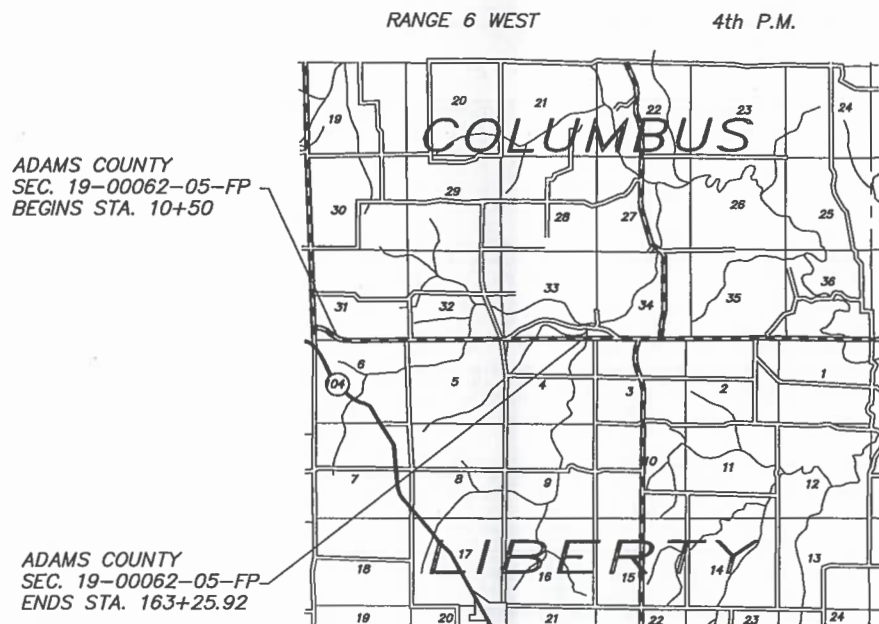
THE PROPOSED IMPROVEMENT CONSISTS OF HMA SURFACE REMOVAL, COLD IN-PLACE RECYCLING AND RESURFACING OF THE ROADWAY WITH 2" POLYMERIZED HMA SURFACE COURSE, AGGREGATE SHOULDERS, INCIDENTAL SURFACING, PAVEMENT MARKINGS, AND OTHER ANCILLARY WORK.



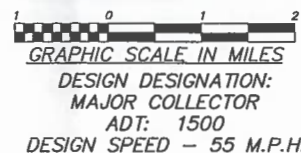
FULL SIZE PLANS HAVE BEEN PREPARED USING STANDARD ENGINEERING SCALES, REDUCED SIZED PLANS WILL NOT CONFORM TO STANDARD SCALES, IN MAKING MEASUREMENTS ON REDUCED PLANS, THE ABOVE SCALES MAY BE USED.

**UTILITIES:**

J.U.L.I.E. ....	1-800-892-0123
AT&T .....	SPRINGFIELD, IL
ABS WATER COOP .....	CLAYTON, IL
AMEREN ILLINOIS .....	QUINCY, IL
ADAMS TELESYS .....	GOLDEN, IL
ADAMS ELECTRIC COOP .....	CAMP POINT, IL
LEVEL 3 (CENTURY LINK).....	GALESBURG, IL



**LOCATION MAP**



**SUMMARY OF LENGTH:**

GROSS LENGTH:  
FAS 1588 - STA. 10+50 TO STA. 163+25.92  
NET LENGTH TO BE IMPROVED = 15,275.92 FT. = 2.893 MILES

THESE PLANS WERE PREPARED BY ME OR A FULL TIME MEMBER OF MY STAFF WORKING UNDER MY PERSONAL SUPERVISION.

SUBMITTED BY James R. Frankenhoff DATE 2/3/21  
COUNTY ENGINEER  
LICENSE NO. 062-044792  
LIC. EXPIRES 11/30/2021



APPROVED FEB 3, 2021  
James R. Frankenhoff  
COUNTY ENGINEER

PASSED February 23, 2021  
Brian Chittenden  
DISTRICT ENGINEER OF LOCAL ROADS AND STREETS

RELEASING FOR BID BASED ON LIMITED REVIEW February 23, 2021  
Jeffrey P. Meyer  
REGION FOUR ENGINEER

**STATE OF ILLINOIS  
DEPARTMENT OF TRANSPORTATION**

PREPARED BY  
ADAMS COUNTY HIGHWAY DEPARTMENT  
101 NORTH 54th STREET, QUINCY, ILLINOIS

# SUMMARY OF QUANTITIES

## PAVEMENT SCHEDULE

LOCATION / STA. - STA.	BITUMINOUS MATERIALS (TACK COAT)	HOT-MIX ASPHALT BINDER COURSE, IL-9.5FG, N50	POLYMERIZED HOT-MIX ASPHALT SURFACE COURSE, IL-9.5, MIX "C", N50	AGGREGATE SHOULDERS, TYPE B	COLD IN-PLACE RECYCLE 5"	CIR-FDR EMULSIFIED ASPHALT	SURFACE PROFILE MILLING
	POUND	TON	TON	TON	SQ YD	GALLON	SQ YD
STA. 10+50 - 15+68.50	857	130	148	154			
STA. 15+68.5 - 163+25.92	16,234		4,052	4,146	36,048	56,032	36,048
<b>TOTAL</b>	<b>17,091</b>	<b>130</b>	<b>4,200</b>	<b>4,300</b>	<b>36,048</b>	<b>56,032</b>	<b>36,048</b>

## HMA SURFACE REMOVAL

LOCATION / STA. - STA.	HOT-MIX ASPHALT SURFACE REMOVAL, 3"	HOT-MIX ASPHALT SURFACE REMOVAL - BUTT JOINT	TEMPORARY RAMP
	SQ. YD.	SQ. YD.	SQ. YD.
STA. 10+50 - 10+60		25	15
STA. 10+50 - 15+68.50	1,268		
STA. 162+14.79 - 163+14.79		245	10
STA. 110+34, LT (E. 2100TH ST.)		106	10
<b>TOTAL</b>	<b>1,268</b>	<b>376</b>	<b>35</b>

## CLASS D PATCHES, 6 INCH

LOCATION / STA. - STA.	TYPE IV
	SQ. YD.
STA. 163+14.79 - 163+25.92	28
<b>TOTAL</b>	<b>28</b>

CODE NO.	ITEM	UNIT	TOTAL QUANTITY	SPECIAL PROVISION
35101400	AGGREGATE BASE COURSE, TYPE B	TON	134	
35800100	PREPARATION OF BASE	SQ YD	601	*
40600290	BITUMINOUS MATERIALS (TACK COAT)	POUND	17,091	*
40600982	HOT-MIX ASPHALT SURFACE REMOVAL - BUTT JOINT	SQ YD	376	*
40600990	TEMPORARY RAMP	SQ YD	35	
40602965	HOT-MIX ASPHALT BINDER COURSE, IL-9.5FG, N50	TON	130	*
40604150	POLYMERIZED HOT-MIX ASPHALT SURFACE COURSE, IL-9.5, MIX "C", N50	TON	4,200	*
40800029	BITUMINOUS MATERIALS (TACK COAT)	POUND	626	*
40800050	INCIDENTAL HOT-MIX ASPHALT SURFACING	TON	277	
44000161	HOT-MIX ASPHALT SURFACE REMOVAL, 3"	SQ YD	1,268	
44201723	CLASS D PATCHES, TYPE IV, 6 INCH	SQ YD	28	
48101200	AGGREGATE SHOULDERS, TYPE B	TON	4,300	*
67100100	MOBILIZATION	L SUM	1	*
70300100	SHORT TERM PAVEMENT MARKING	FOOT	1,532	
70300150	SHORT TERM PAVEMENT MARKING REMOVAL	SQ FT	507	
Δ 78001110	PAINT PAVEMENT MARKING - LINE 4"	FOOT	13,335	
X2020410	EARTH EXCAVATION (SPECIAL)	CU YD	68	*
X7010216	TRAFFIC CONTROL AND PROTECTION, (SPECIAL)	L SUM	1	*
LR400005	CIR-FDR EMULSIFIED ASPHALT	GALLON	56,032	*
LR400750	COLD IN-PLACE RECYCLING, 5.0"	SQ YD	36,048	*
# 20076600	TRAINEES	Hour	500	
LR403300	SURFACE PROFILE MILLING	SQ YD	36,048	*
# 20076604	TRAINEES TRAINING PROGRAM GRADUATE	Hour	500	

Δ SPECIALTY ITEMS

# 0042

USER NAME =	DESIGNED -	REVISED -
	DRAWN - AAM	REVISED -
PLOT SCALE = 1:2	CHECKED -	REVISED -
PLOT DATE =	DATE -	REVISED -

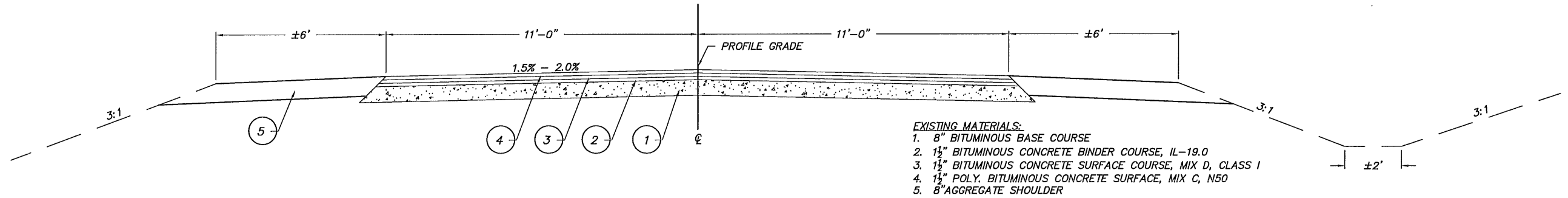
**ADAMS COUNTY  
HIGHWAY DEPARTMENT**

**SUMMARY OF QUANTITIES  
SCHEDULE OF QUANTITIES**

COUNTY	ROUTE	SECTION	TOTAL SHEETS	SHEET NO.
ADAMS	FAS 1588	19-00062-05-FP	18	2
COUNTY HIGHWAY 48			CONTRACT 93765	

SCALE SHEET 1 OF 1 SHEETS STA. -- TO STA. --

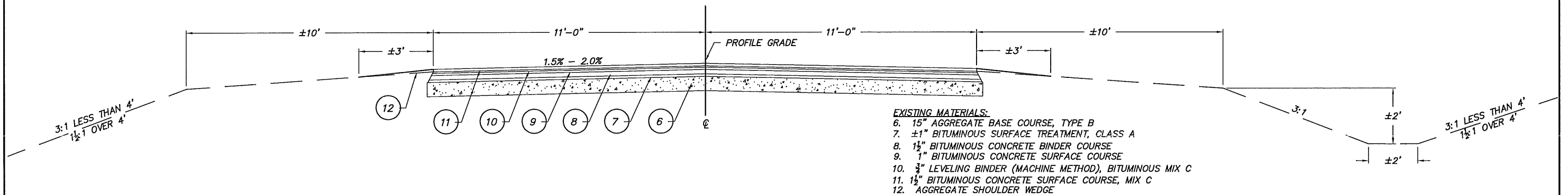
# TYPICAL CROSS SECTIONS



- EXISTING MATERIALS:**
1. 8" BITUMINOUS BASE COURSE
  2. 1½" BITUMINOUS CONCRETE BINDER COURSE, IL-19.0
  3. 1½" BITUMINOUS CONCRETE SURFACE COURSE, MIX D, CLASS I
  4. 1½" POLY. BITUMINOUS CONCRETE SURFACE, MIX C, N50
  5. 8" AGGREGATE SHOULDER

- EXISTING CONSTRUCTION SECTIONS:**
- SEC. 8-A-15d
  - SEC. 8-15d
  - SEC. 8-1-MFT
  - SEC. 62-Q
  - SEC. SM-62-Q
  - IDOT SEC. 104R-3/105R
  - SEC. 95-00148-00-FP (L1)
  - SEC. 07-00000-99-GM

**EXISTING TYPICAL SECTION**  
STATION 10+50 TO STATION 15+68.50



- EXISTING MATERIALS:**
6. 15" AGGREGATE BASE COURSE, TYPE B
  7. ±1" BITUMINOUS SURFACE TREATMENT, CLASS A
  8. 1½" BITUMINOUS CONCRETE BINDER COURSE
  9. 1" BITUMINOUS CONCRETE SURFACE COURSE
  10. ¾" LEVELING BINDER (MACHINE METHOD), BITUMINOUS MIX C
  11. 1½" BITUMINOUS CONCRETE SURFACE COURSE, MIX C
  12. AGGREGATE SHOULDER WEDGE

**EXISTING TYPICAL SECTION**  
STATION 15+68.50 TO STATION 163+25.92

USER NAME =	DESIGNED -	REVISED -
	DRAWN - BDF	REVISED -
PLOT SCALE = 1:2	CHECKED -	REVISED -
PLOT DATE =	DATE -	REVISED -

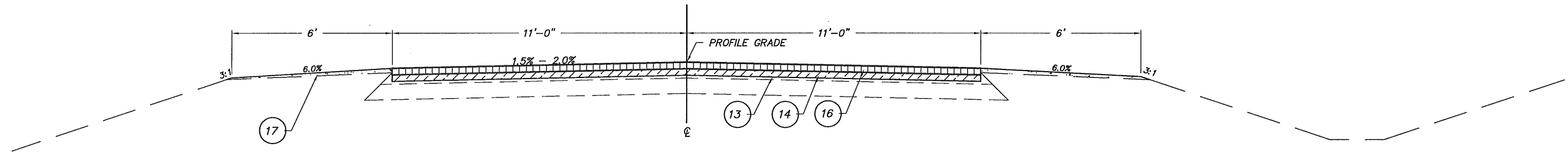
**ADAMS COUNTY  
HIGHWAY DEPARTMENT**

**EXISTING TYPICAL SECTIONS**

SCALE      SHEET 1 OF 2 SHEETS      STA. 10+50 TO STA. 163+25.92

COUNTY	ROUTE	SECTION	TOTAL SHEETS	SHEET NO.
ADAMS	FAS 1588	19-00062-05-FP	18	3
COUNTY HIGHWAY 48				
			CONTRACT 93765	

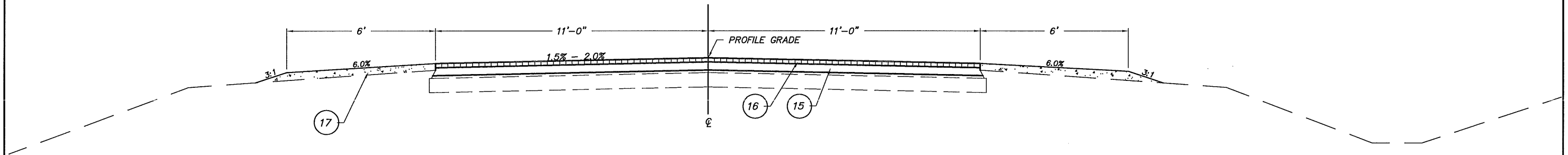
# TYPICAL CROSS SECTIONS



**PROPOSED TYPICAL SECTION**  
STATION 10+50 TO STATION 15+68.50

**PROPOSED MATERIALS:**

- 13. HOT-MIX ASPHALT SURFACE REMOVAL, 3"
- 14. 1 1/2" HOT-MIX ASPHALT BINDER COURSE, IL-9.5FG, N50
- 15. COLD IN-PLACE RECYCLING, 5"
- 16. 2" POLYMERIZED HOT-MIX ASPHALT SURFACE COURSE, IL-9.5, MIX "C", N50
- 17. AGGREGATE SHOULDER STONE, TYPE B (THICKNESS VARIES)



**PROPOSED TYPICAL SECTION**  
STATION 15+68.50 TO STATION 163+25.92

USER NAME =	DESIGNED -	REVISED -
	DRAWN - BDF	REVISED -
PLOT SCALE = 1:2	CHECKED -	REVISED -
PLOT DATE =	DATE -	REVISED -

**ADAMS COUNTY  
HIGHWAY DEPARTMENT**

**PROPOSED TYPICAL SECTIONS**

SCALE      SHEET 2 OF 2 SHEETS      STA. 10+50 TO STA. 163+25.92

COUNTY	ROUTE	SECTION	TOTAL SHEETS	SHEET NO.
ADAMS	FAS 1588	19-00062-05-FP	18	4
COUNTY HIGHWAY 48			CONTRACT 93765	

# GENERAL NOTES

- WHERE SECTION OR SUB-SECTION STONES, PROPERTY PINS, USGS BENCH MARK MONUMENTS, AND U.S. ARMY CORPS OF ENGINEERS SURVEY MARKERS ARE ENCOUNTERED, THE ENGINEER SHALL BE NOTIFIED BEFORE SUCH STONES AND MONUMENTS ARE REMOVED. THE CONTRACTOR SHALL PROTECT AND CAREFULLY PRESERVE ALL PROPERTY MARKS UNTIL AN OWNER, AN AUTHORIZED SURVEYOR OR THEIR REPRESENTATIVE HAS WITNESSED OR OTHERWISE REFERENCED THE PROPERTY MARKS LOCATION.
- ALL PRIVATELY OWNED UTILITIES, UNLESS OTHERWISE SPECIFIED, WILL BE MOVED BY THEIR RESPECTIVE OWNERS WHERE REQUIRED. THE FOLLOWING UTILITY COMPANIES MAY HAVE FACILITIES WITHIN THE LIMITS OF CONSTRUCTION:  
 AMEREN ILLINOIS    ADAMS TELEPHONE    ADAMS ELECTRIC    AT & T    ABS WATER COOP  
 LEVEL 3 (CENTURY LINK)
- THE NOMINAL THICKNESS FOR THE HOT-MIX ASPHALT BINDER, HOT-MIX ASPHALT SURFACE COURSE AND THE COLD IN-PLACE RECYCLE IS SHOWN ON THE TYPICAL SECTION, STANDARDS, SCHEDULES OR SPECIAL DETAILS. THE CONSTRUCTED THICKNESS OF THE ABOVE ITEMS SHALL NOT BE LESS THAN 90% OF THE NOMINAL THICKNESS AT ANY LOCATION.
- THE UTILITY LOCATIONS, IF MARKED ON THE PLANS, ARE FOR REFERENCE ONLY, AND ARE SHOWN FOR CONTRACTOR INFORMATIONAL USE ONLY, AND ARE NOT TO BE REFERENCED FOR CONSTRUCTION PURPOSES. THE IMPLIED PRESENCE OR ABSENCE OF UTILITIES IS NOT TO BE CONSTRUED BY THE OWNER, ENGINEER, CONTRACTOR, OR SUBCONTRACTORS TO BE AN ACCURATE AND COMPLETE REPRESENTATION OF UTILITIES THAT MAY OR MAY NOT EXIST ON THE CONSTRUCTION SITE.
- THE CONTRACTOR SHALL BE RESPONSIBLE FOR DETERMINING THE LOCATION AND ELEVATION OF ALL EXISTING UTILITIES AND TO NOTIFY ALL UTILITY COMPANIES PRIOR TO THE BEGINNING OF CONSTRUCTION. THE REROUTING, DISCONNECTION, PROTECTION, ETC. OF ANY UTILITIES MUST BE COORDINATED BETWEEN THE CONTRACTOR, UTILITY AND OWNER. SITE SAFETY, INCLUDING THE AVOIDANCE OF HAZARDS ASSOCIATED WITH BURIED AND ABOVE GROUND UTILITIES REMAINS THE SOLE RESPONSIBILITY OF THE CONTRACTOR. THIS WILL BE CONSIDERED INCIDENTAL TO THE CONTRACT.
- ALL DISTURBED AREAS WITHIN THE RIGHT-OF-WAY SHALL BE SEEDED BY OTHERS.
- ANY EXISTING ROAD SIGNS THAT INTERFERE WITH CONSTRUCTION WILL BE REMOVED OR RELOCATED AS DIRECTED BY THE ENGINEER. AFTER THE CONSTRUCTION IS COMPLETED, THE CONTRACTOR WILL REPLACE THE SIGNS AS DIRECTED BY THE ENGINEER. THIS WORK WILL NOT BE PAID FOR SEPERATELY BUT SHALL BE INCLUDED IN THE CONTRACT AND NO ADDITIONAL COMPENSATION WILL BE ALLOWED.

## APPLICATION RATES

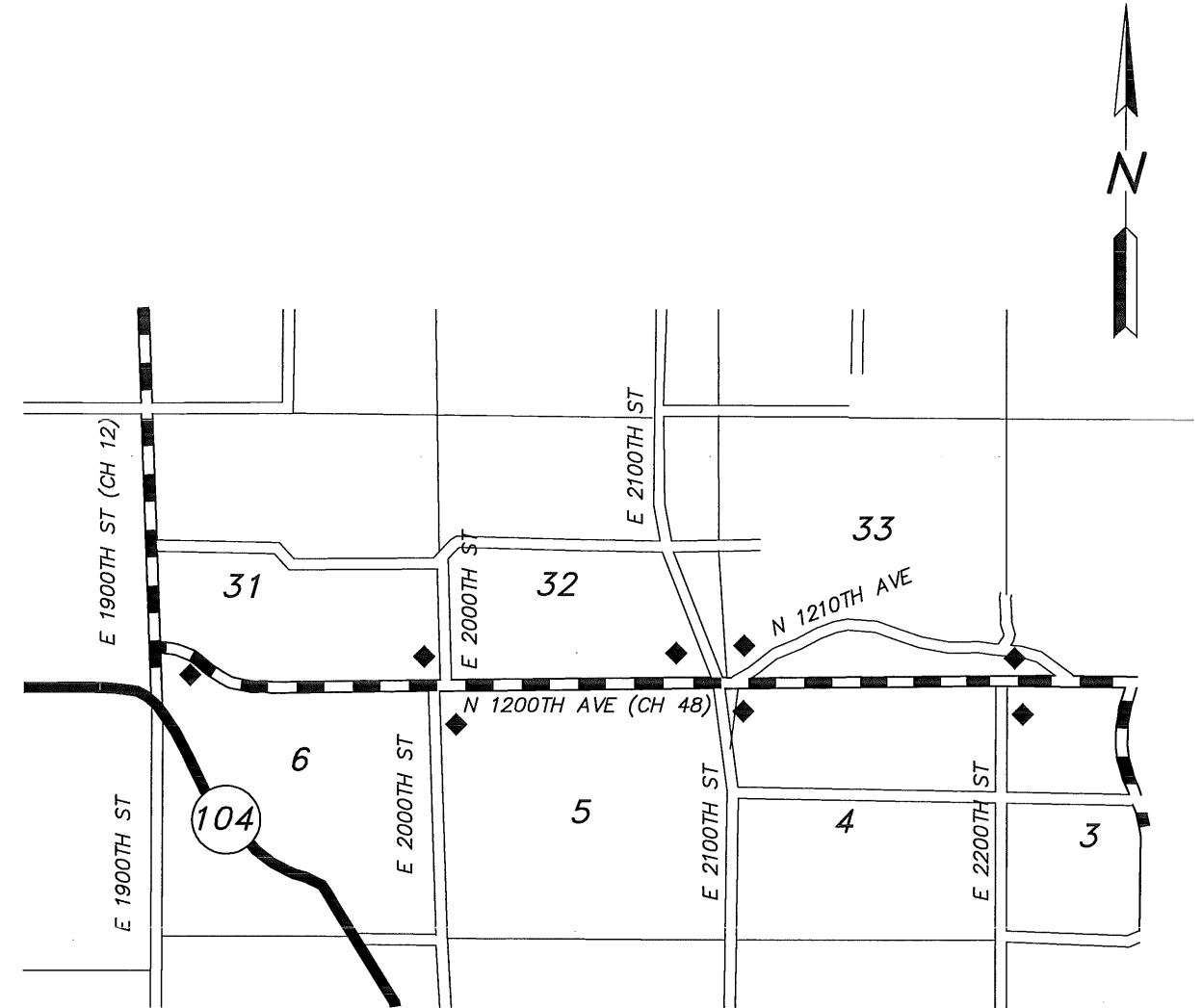
BITUMINOUS MATERIALS (TACK COAT)	
ON EXISTING PAVEMENT	0.05 LB/SQ FT
BETWEEN HMA LIFTS	0.025 LB/SQ FT
AGGREGATE (SURFACE, SHOULDERS)	
	1.8 TON/CU YD

## HOT-MIX ASPHALT MIXTURE REQUIREMENTS

PAY ITEM	MIXTURE	ASPHALT GRADE	N Design	VOIDS
HOT-MIX ASPHALT BINDER COURSE	IL-9.5FG	PG 64-22	N50	4.0%
POLY. HOT-MIX ASPHALT SURFACE COURSE	IL-9.5 "C"	SBS PG 64-28	N50	4.0%
HOT-MIX ASPHALT SURFACE COURSE	IL-9.5 "C"	PG 58-28	N50	4.0%

NOTE: HOT-MIX ASPHALT QUANTITIES CALCULATED @ 112 #/SQ. YD. / IN.

# TRAFFIC CONTROL AND PROTECTION



◆ ROAD CONSTRUCTION AHEAD

SEE SPECIAL PROVISIONS FOR APPLICATION OF:  
 "NO PASSING ZONES NOT STRIPPED NEXT \_\_\_\_ MILES"

USER NAME =	DESIGNED -	REVISED -
	DRAWN - AJM	REVISED -
PLOT SCALE = 1:2	CHECKED -	REVISED -
PLOT DATE =	DATE -	REVISED -

**ADAMS COUNTY  
HIGHWAY DEPARTMENT**

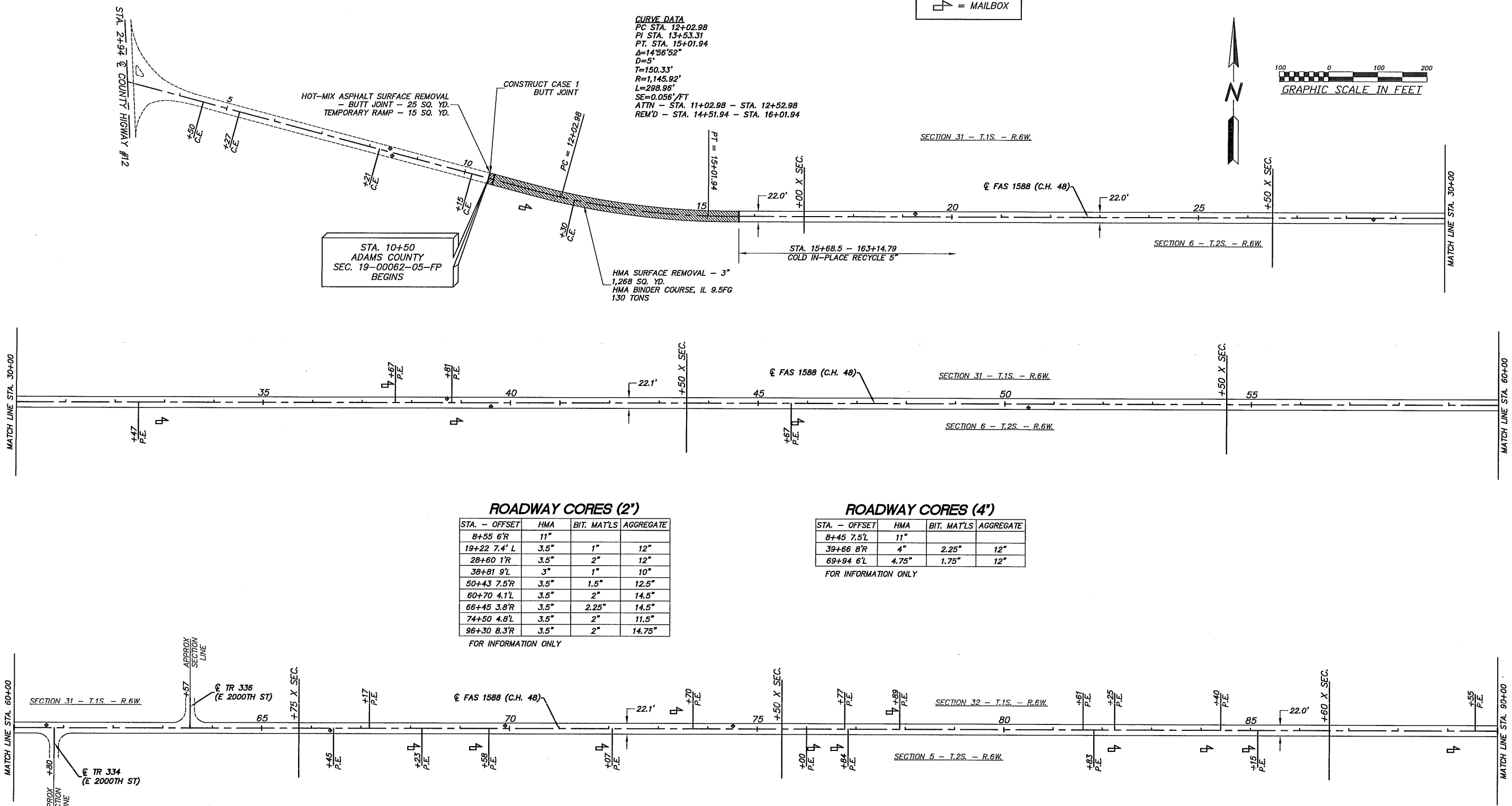
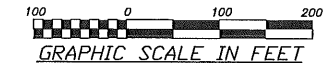
GENERAL NOTES    HMA MIXTURE REQUIREMENTS  
 APPLICATION RATES    TRAFFIC CONTROL AND PROTECTION

SCALE    SHEET 1 OF 1 SHEETS    STA. -- TO STA. --

COUNTY	ROUTE	SECTION	TOTAL SHEETS	SHEET NO.
ADAMS	FAS 158B	19-00062-05-FP	18	5
COUNTY HIGHWAY 48			CONTRACT 93765	

**LEGEND**  
 = MAILBOX

**CURVE DATA**  
 PC STA. 12+02.98  
 PI STA. 13+53.31  
 PT. STA. 15+01.94  
 Δ=14°56'52"  
 D=5'  
 T=150.33'  
 R=1,143.92'  
 L=298.96'  
 SE=0.056'/FT  
 ATTN - STA. 11+02.98 - STA. 12+52.98  
 REM'D - STA. 14+51.94 - STA. 16+01.94



**ROADWAY CORES (2')**

STA. - OFFSET	HMA	BIT. MAT'LS	AGGREGATE
8+55 6'R	11"		
19+22 7.4' L	3.5"	1"	12"
28+60 1'R	3.5"	2"	12"
38+81 9'L	3"	1"	10"
50+43 7.5'R	3.5"	1.5"	12.5"
60+70 4.1'L	3.5"	2"	14.5"
66+45 3.8'R	3.5"	2.25"	14.5"
74+50 4.8'L	3.5"	2"	11.5"
96+30 8.3'R	3.5"	2"	14.75"

FOR INFORMATION ONLY

**ROADWAY CORES (4')**

STA. - OFFSET	HMA	BIT. MAT'LS	AGGREGATE
8+45 7.5'L	11"		
39+66 8'R	4"	2.25"	12"
69+94 6'L	4.75"	1.75"	12"

FOR INFORMATION ONLY

USER NAME =	DESIGNED -	REVISED -
PLOT SCALE = 1:100	DRAWN - AJM	REVISED -
PLOT DATE =	CHECKED -	REVISED -
	DATE -	REVISED -

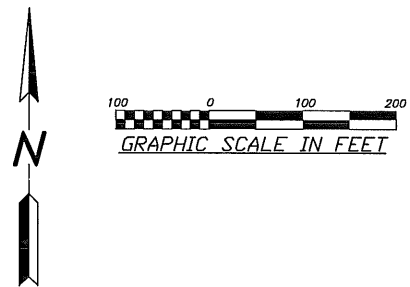
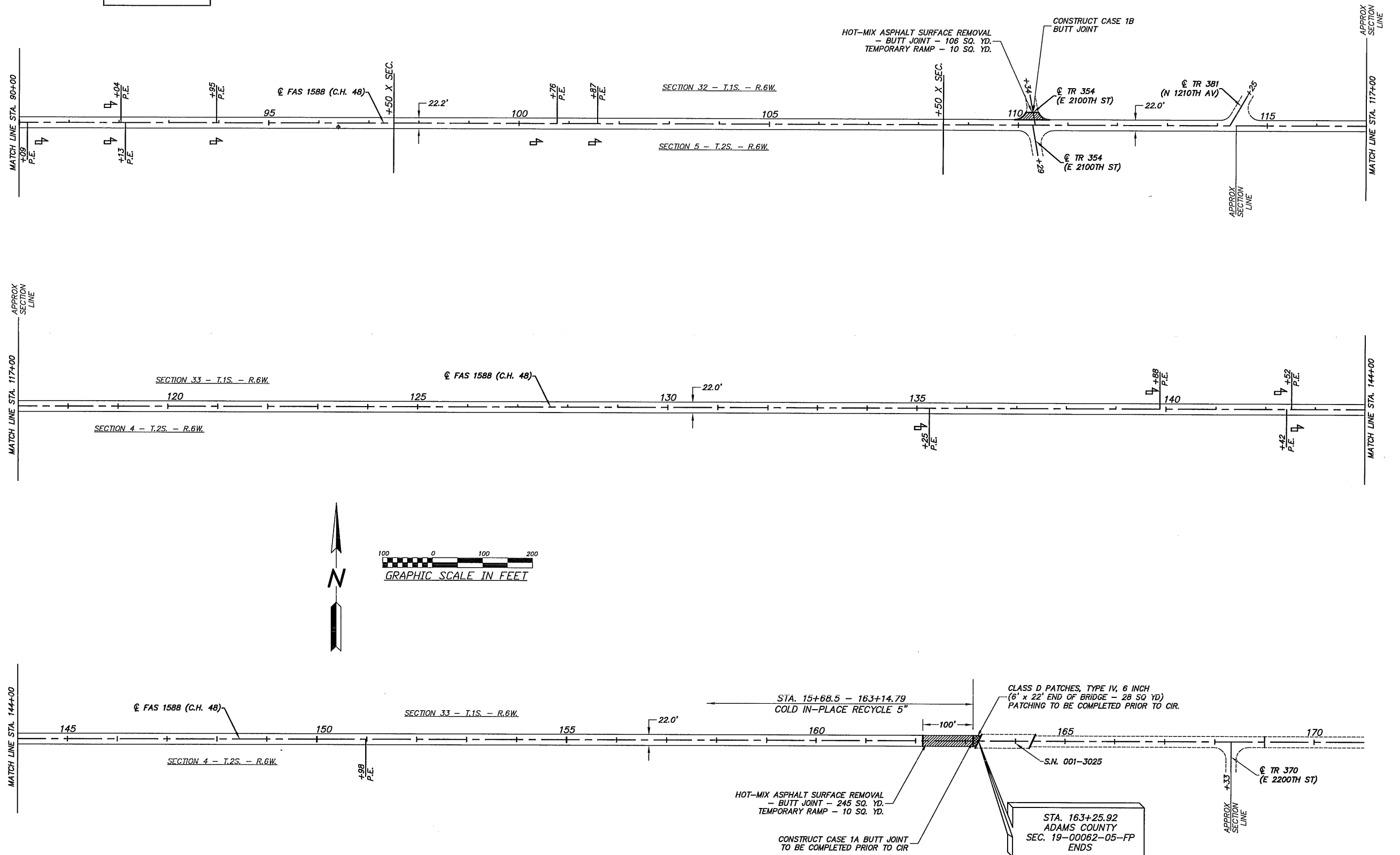
**ADAMS COUNTY  
 HIGHWAY DEPARTMENT**

**PAVING PLAN**

SCALE 1:100      SHEET 1 OF 2 SHEETS      STA. 10+50 TO STA. 90+00

COUNTY	ROUTE	SECTION	TOTAL SHEETS	SHEET NO.
ADAMS	FAS 1588	19-00062-05-FP	18	6
COUNTY HIGHWAY 48			CONTRACT 93765	

**LEGEND**  
 = MAILBOX



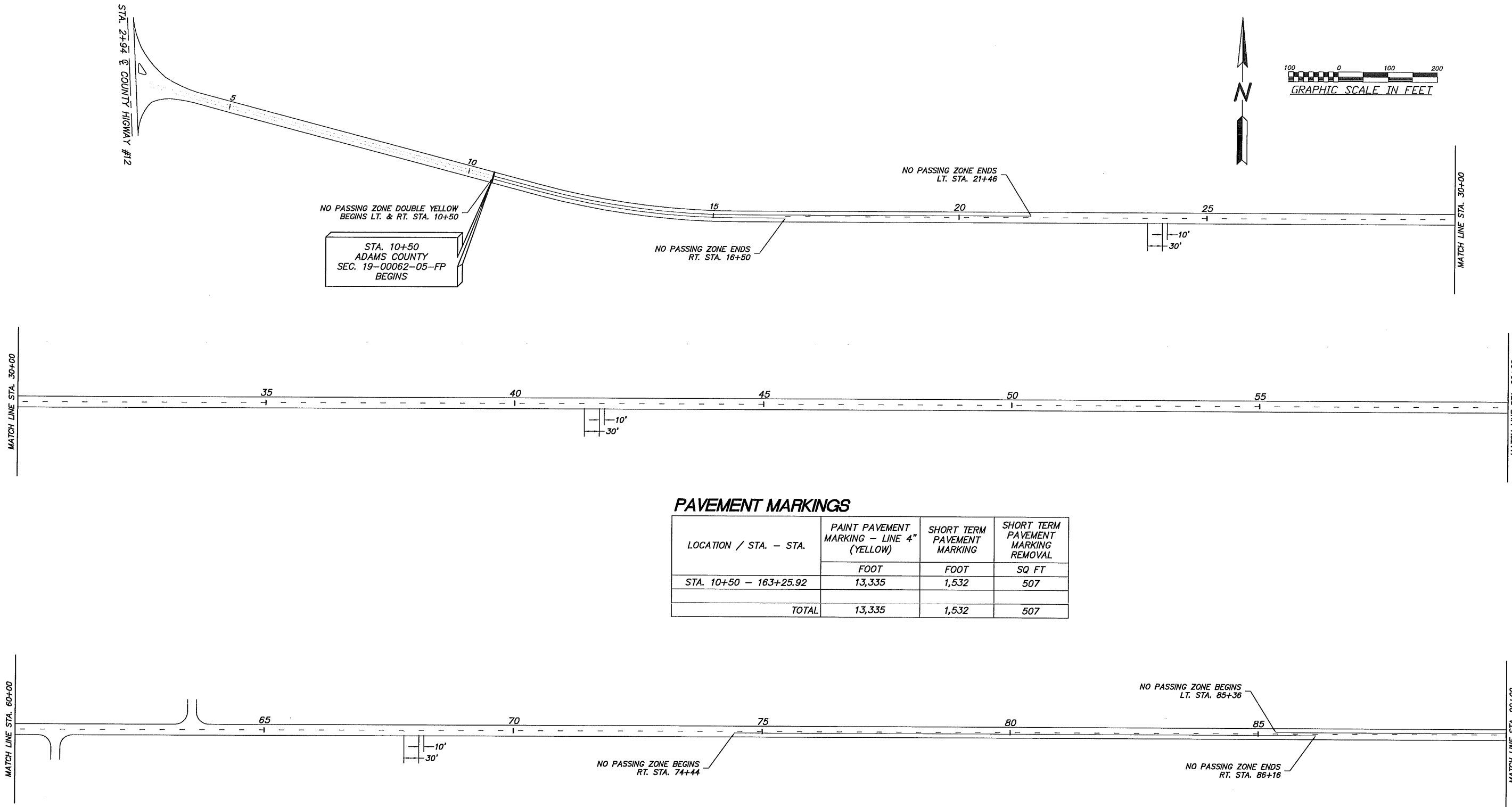
USER NAME =	DESIGNED -	REVISED -
PLOT SCALE = 1:100	DRAWN - AJM	REVISED -
PLOT DATE =	CHECKED -	REVISED -
	DATE -	REVISED -

**ADAMS COUNTY  
HIGHWAY DEPARTMENT**

<b>PAVING PLAN</b>		
SCALE 1:100	SHEET 2 OF 2 SHEETS	STA. 90+00 TO STA. 163+25.92

COUNTY	ROUTE.	SECTION	TOTAL SHEETS	SHEET NO.
ADAMS	FAS 1588	19-00062-05-FP	18	7
COUNTY HIGHWAY 48			CONTRACT 93765	

STA. 2+94 @ COUNTY HIGHWAY #12



STA. 10+50  
ADAMS COUNTY  
SEC. 19-00062-05-FP  
BEGINS

**PAVEMENT MARKINGS**

LOCATION / STA. - STA.	PAINT PAVEMENT MARKING - LINE 4" (YELLOW)	SHORT TERM PAVEMENT MARKING	SHORT TERM PAVEMENT MARKING REMOVAL
	FOOT	FOOT	SQ FT
STA. 10+50 - 163+25.92	13,335	1,532	507
TOTAL	13,335	1,532	507

USER NAME =	DESIGNED -	REVISED -
PLOT SCALE = 1:100	DRAWN - AJM	REVISED -
PLOT DATE =	CHECKED -	REVISED -
	DATE -	REVISED -

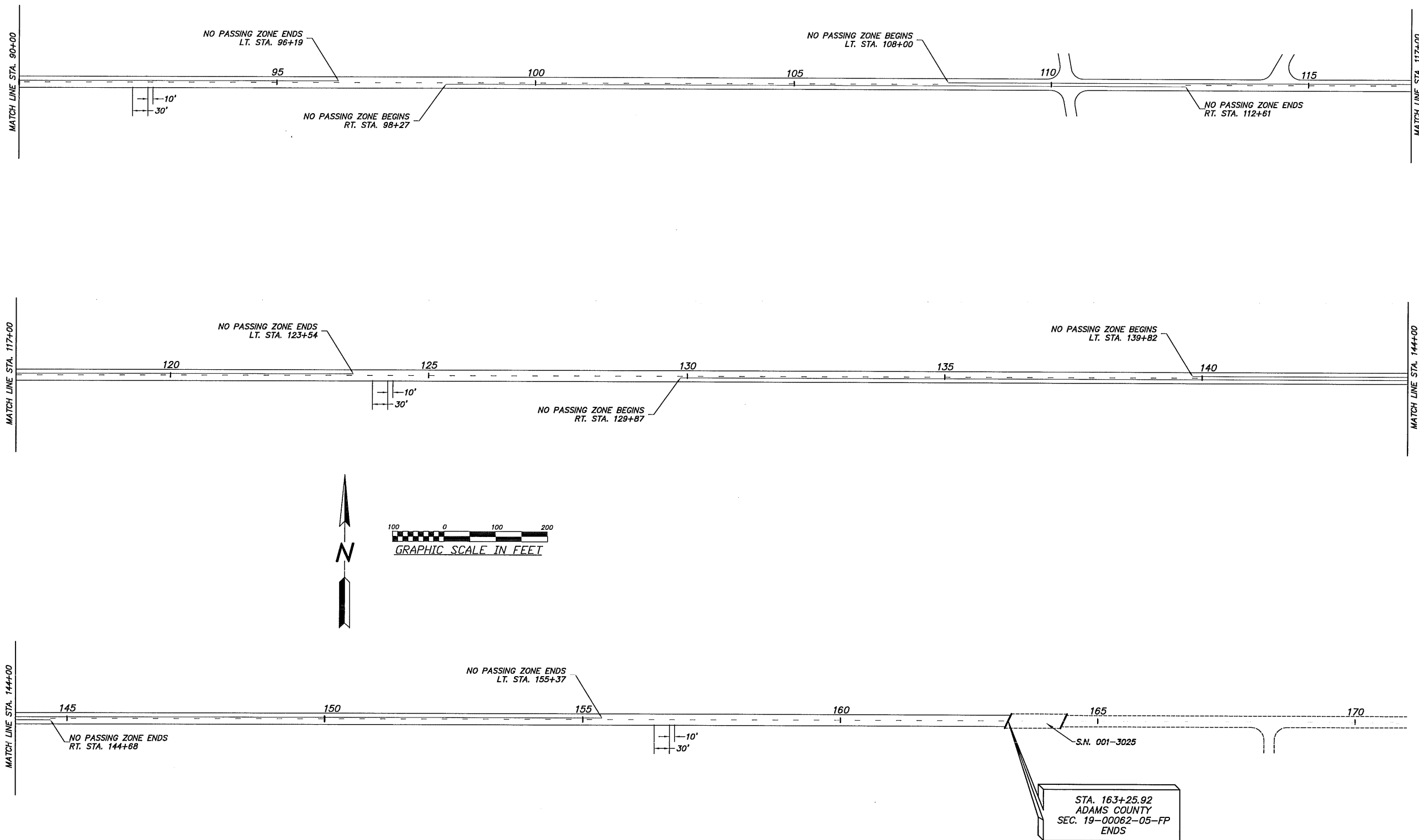
**ADAMS COUNTY  
HIGHWAY DEPARTMENT**

**STRIPING PLAN**

SCALE 1:100 SHEET 1 OF 2 SHEETS STA. 10+50 TO STA. 90+00

COUNTY	ROUTE	SECTION	TOTAL SHEETS	SHEET NO.
ADAMS	FAS 1588	19-00062-05-FP	18	8
COUNTY HIGHWAY 48			CONTRACT 93765	





USER NAME =	DESIGNED -	REVISED -
PLOT SCALE = 1:100	DRAWN - AJM	REVISED -
PLOT DATE =	CHECKED -	REVISED -
	DATE -	REVISED -

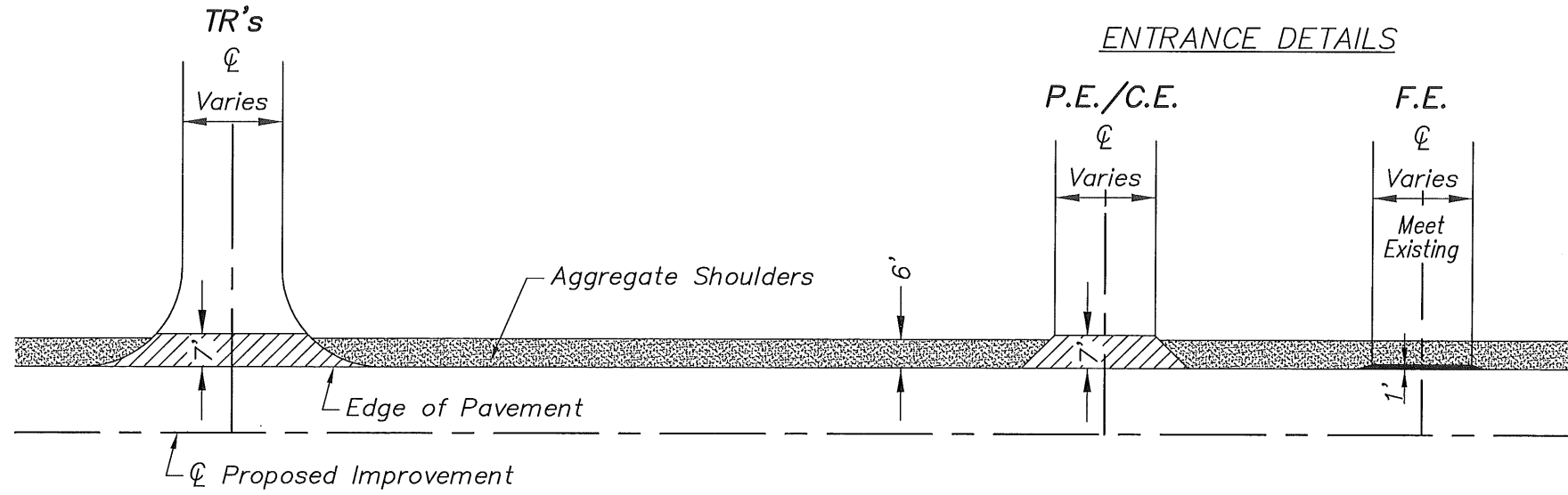
**ADAMS COUNTY  
HIGHWAY DEPARTMENT**

**STRIPING PLAN**

SCALE 1:100      SHEET 2 OF 2 SHEETS      STA. 90+00 TO STA. 163+25.92

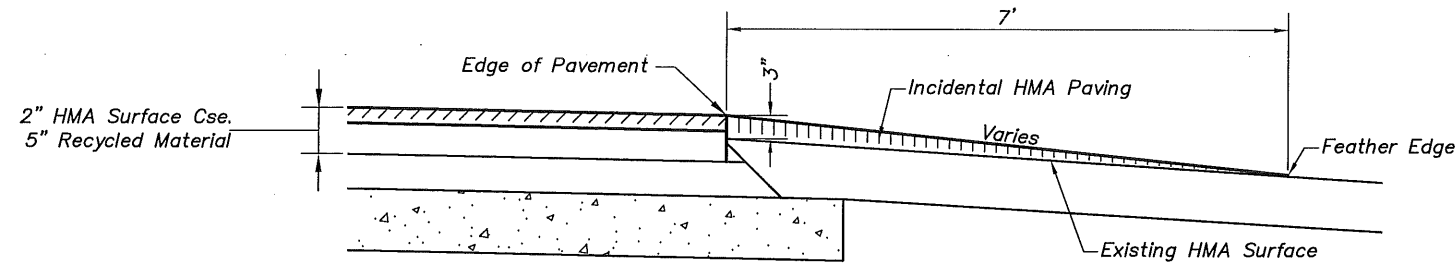
COUNTY	ROUTE	SECTION	TOTAL SHEETS	SHEET NO.
ADAMS	FAS 1588	19-00062-05-FP	18	9
COUNTY HIGHWAY 48			CONTRACT 93765	

INTERSECTION DETAIL

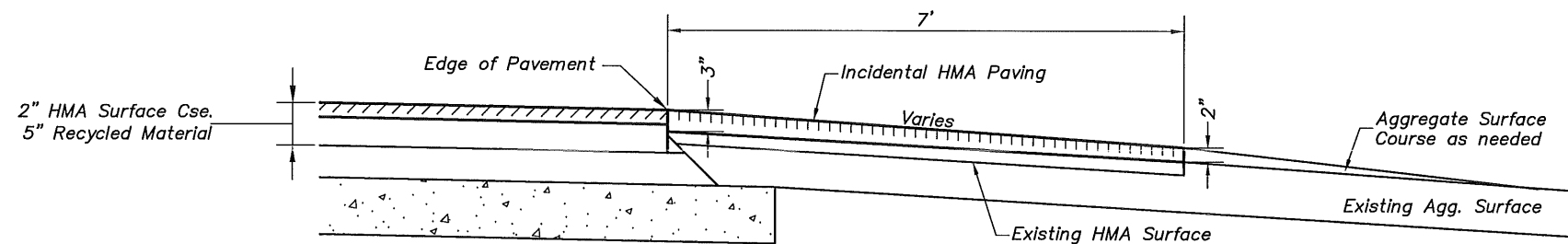


**INCIDENTAL PAVING SCHEDULE  
(ENTRANCES AND SIDE ROADS)**

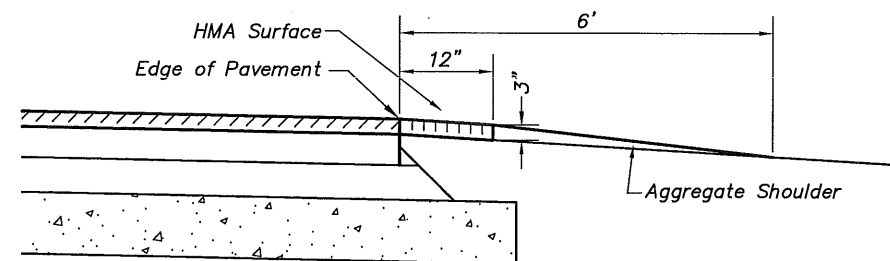
LOCATION / STA. - STA.	PREPARATION OF BASE	EARTH EXCAVATION (SPECIAL)	AGGREGATE BASE COURSE	INCIDENTAL HOT-MIX ASPHALT SURFACING	BITUMINOUS MATERIALS (TACK COAT)
	SQ YD	CU YD	TON	TON	POUND
RT. STA. 12+30, CE				8	29
RT. STA. 32+47, PE				6	24
LT. STA. 37+67, PE				3	10
LT. STA. 38+81, PE				3	9
RT. STA. 45+67, PE	13			3	10
RT. STA. 60+80, TR	38			5	
LT. STA. 63+57, TR	37			5	
RT. STA. 66+45, PE	20			3	
LT. STA. 67+17, PE	40			5	
RT. STA. 68+23, PE		6	12	3	
RT. STA. 69+58, PE		6	12	3	
RT. STA. 72+07, PE		7	13	4	
LT. STA. 73+70, PE	53			6	
RT. STA. 76+00, PE	21			3	
LT. STA. 76+77, PE		6	11	3	
RT. STA. 76+84, PE	23			3	
LT. STA. 77+89, PE				3	10
LT. STA. 81+61, PE				3	9
RT. STA. 81+83, PE	18			6	13
LT. STA. 82+25, PE				3	9
LT. STA. 84+40, PE	6			2	6
RT. STA. 85+15, PE				2	5
LT. STA. 89+55, PE				3	9
RT. STA. 90+09, PE	12			5	13
LT. STA. 92+04, PE	7			3	9
RT. STA. 92+13, PE	16			4	8
LT. STA. 93+95, PE	3			3	10
LT. STA. 100+76, PE	5			3	9
LT. STA. 101+87, PE	7			5	15
RT. STA. 110+29, TR	73			9	
LT. STA. 110+34, TR				12	48
LT. STA. 114+25, TR	8			8	26
RT. STA. 135+25, PE	3			2	5
LT. STA. 139+88, PE	1			3	12
RT. STA. 142+42, PE	17			3	2
LT. STA. 142+52, PE	24			3	
RT. STA. 150+98, PE	49			6	
<b>TOTAL</b>	<b>494</b>	<b>25</b>	<b>48</b>	<b>157</b>	<b>300</b>



EXISTING HMA or PCC ENTRANCE



EXISTING AGGREGATE SURFACE ENTRANCE OR SIDE ROAD



FIELD ENTRANCE

USER NAME =	DESIGNED -	REVISED -
PLOT SCALE = 1:1	DRAWN - BDF	REVISED -
PLOT DATE =	CHECKED -	REVISED -
	DATE -	REVISED -

**ADAMS COUNTY  
HIGHWAY DEPARTMENT**

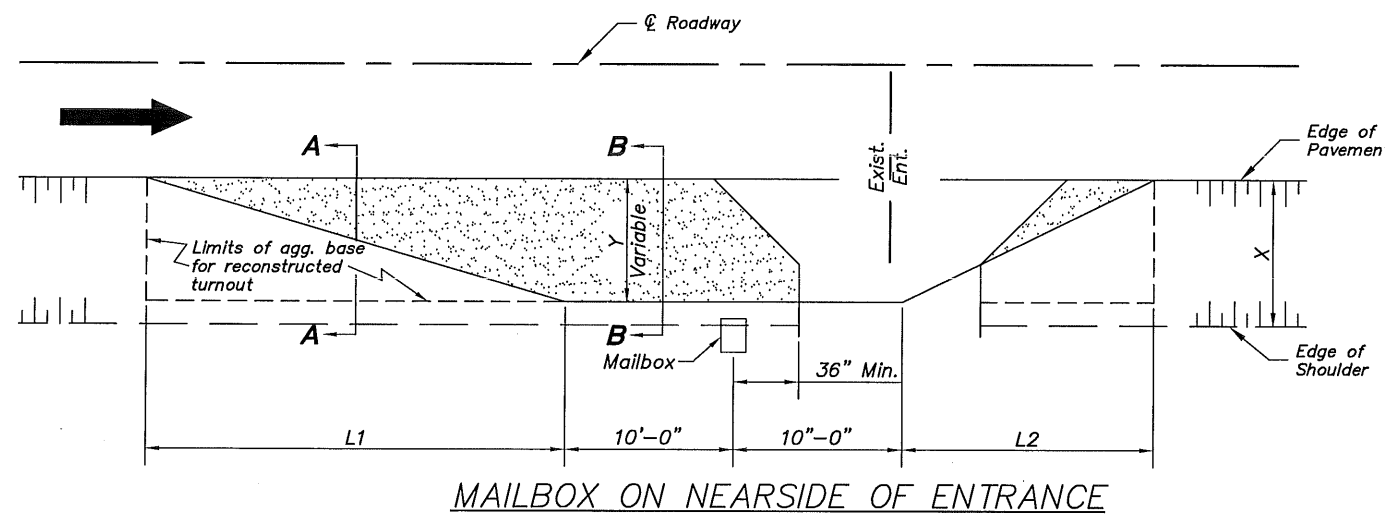
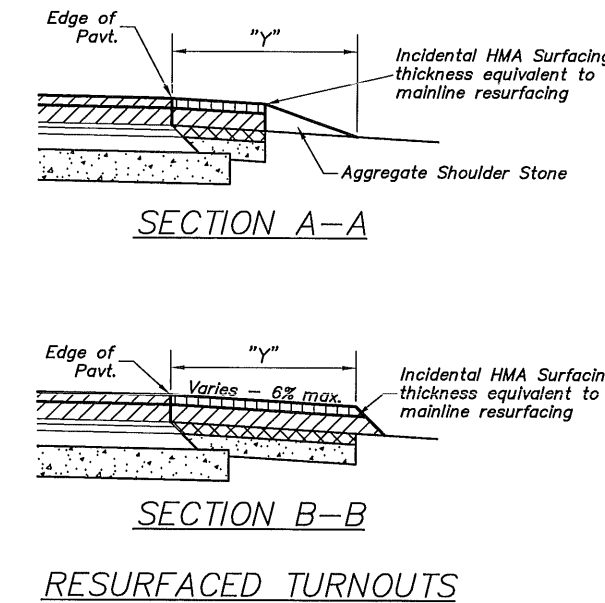
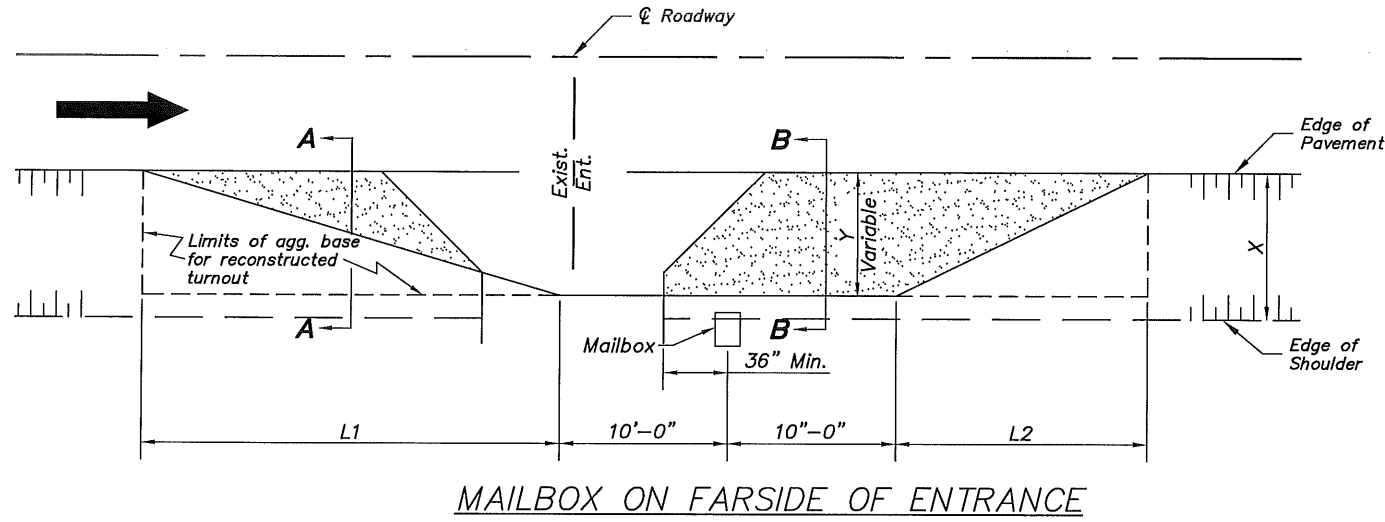
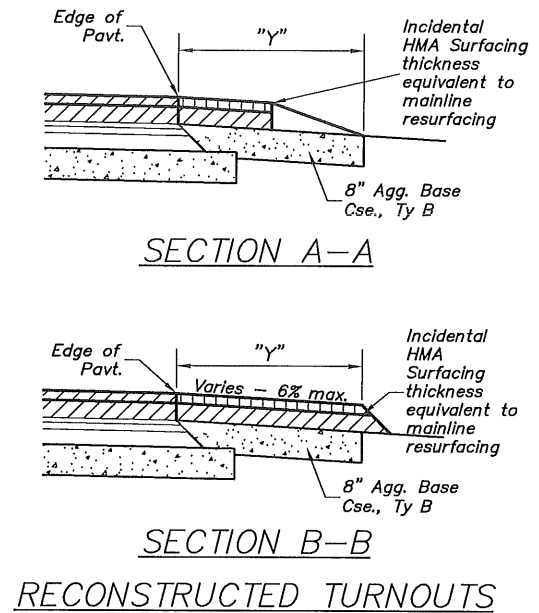
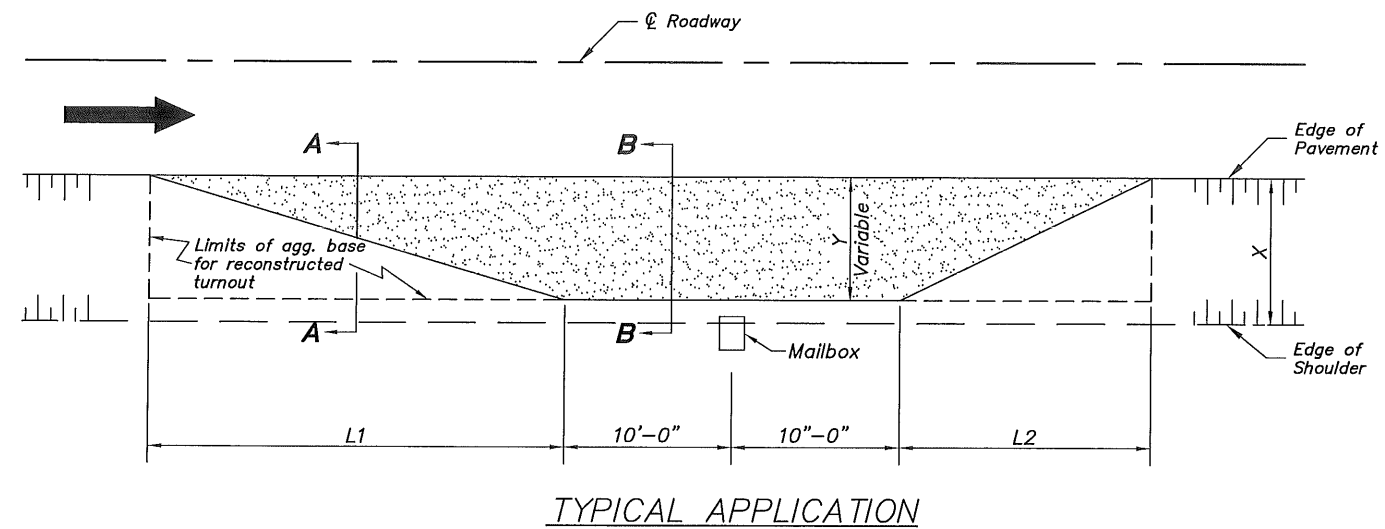
**EXISTING ENTRANCE RESURFACING**

SCALE: NONE SHEET 1 OF 1 SHEETS STA. --- TO STA. ---

COUNTY	ROUTE	SECTION	TOTAL SHEETS	SHEET NO.
ADAMS	FAS 1588	19-00062-05-FP	18	10
COUNTY HIGHWAY 48			CONTRACT 93765	

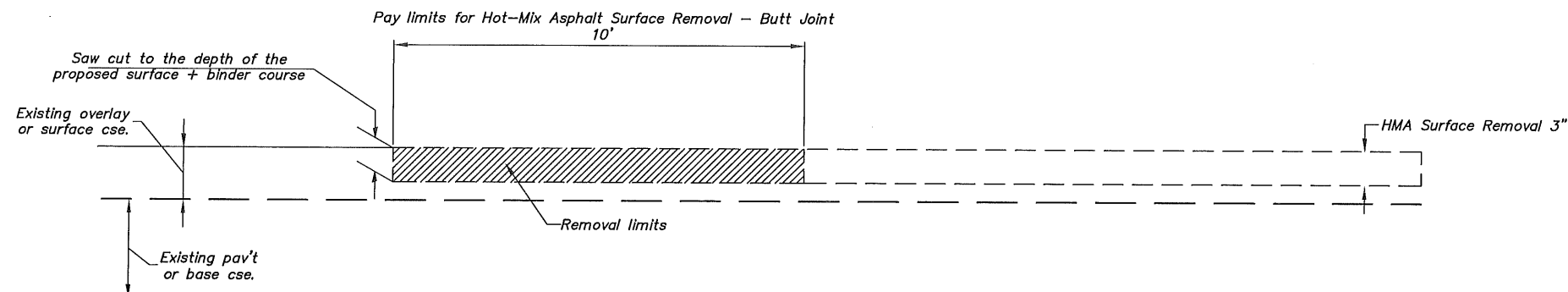
**INCIDENTAL PAVING SCHEDULE  
(MAILBOX TURNOUTS)**

LOCATION / STA. - STA.	PREPARATION OF BASE	EARTH EXCAVATION (SPECIAL)	AGGREGATE BASE COURSE	INCIDENTAL HOT-MIX ASPHALT SURFACING	BITUMINOUS MATERIALS (TACK COAT)
	SQ YD	CU YD	TON	TON	POUND
RT. STA. 11+38	36			4	12
RT. STA. 32+95				29	114
LT. STA. 37+52		4	8	2	
RT. STA. 38+91				7	28
RT. STA. 45+79				4	16
RT. STA. 68+07		5	10	3	
RT. STA. 69+32		5	10	3	
RT. STA. 71+87		5	10	3	
LT. STA. 73+37	21			3	
RT. STA. 76+15		4	8	2	
RT. STA. 76+62		5	10	3	
LT. STA. 77+81		5	10	3	
RT. STA. 82+25				4	14
RT. STA. 84+12				7	26
RT. STA. 84+97		5	10	3	
RT. STA. 89+12				5	17
RT. STA. 90+38				2	8
LT. STA. 91+83		5	10	3	
RT. STA. 91+83				4	16
RT. STA. 93+95				5	21
RT. STA. 100+35				7	26
RT. STA. 101+76				5	19
RT. STA. 135+08	10			3	5
LT. STA. 139+73	10			2	3
LT. STA. 142+30	15			2	
RT. STA. 142+64	15			2	1
<b>TOTAL</b>	<b>107</b>	<b>43</b>	<b>86</b>	<b>120</b>	<b>326</b>

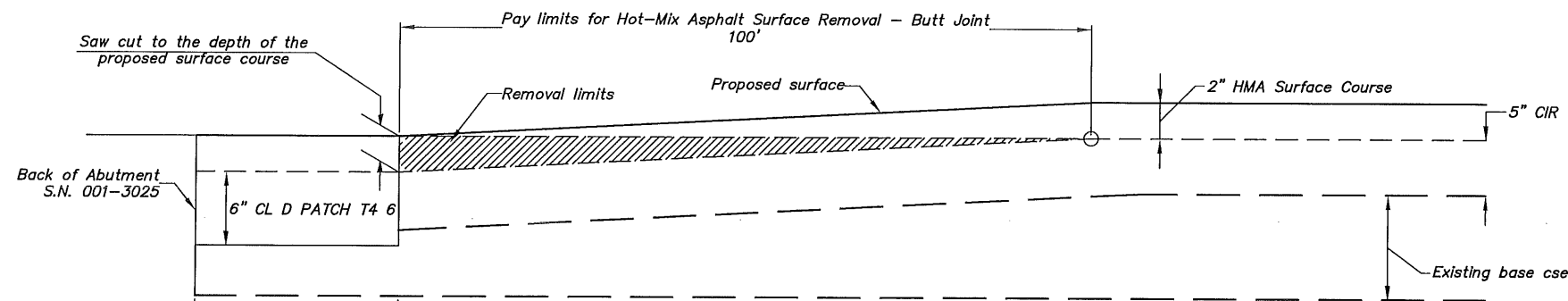


DIMENSIONS - ft.						
Width of Shoulder (X)	12	10	8	6	5	4
Width of Turnout (Y)	8	8	6	4	4	4
L1	30	30	23	15	15	15
L2	20	20	15	10	10	10

**GENERAL NOTES:**  
The Engineer reserves the right to alter the placement of the mailbox turnout to match existing conditions and utilize the entrance as part of the taper.  
Mailboxes shall be mounted such that the face of the mailbox is 6" to 12" and the post a minimum of 24" from the edge of the turnout surfacing.

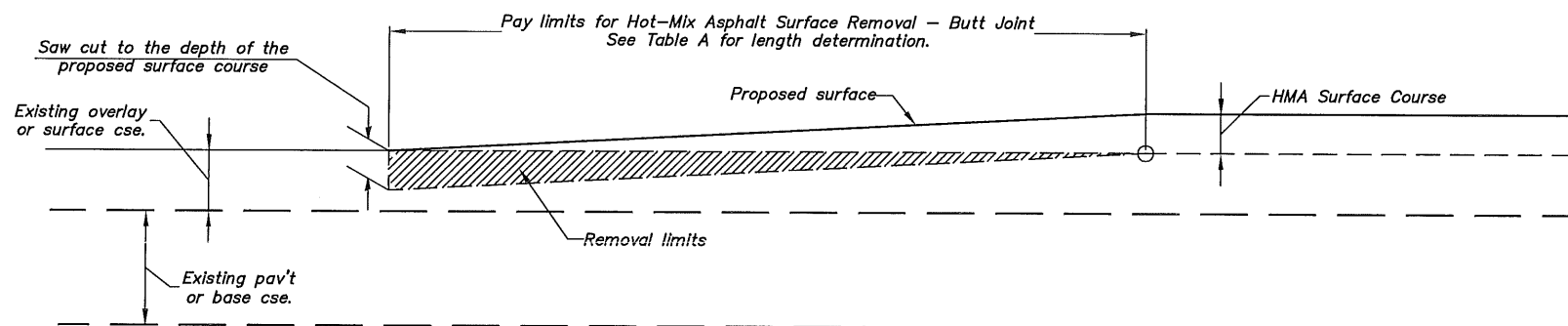


**CASE 1: BUTT JOINT w/ HMA SURF REM, BINDER, AND SURFACE OVERLAY**

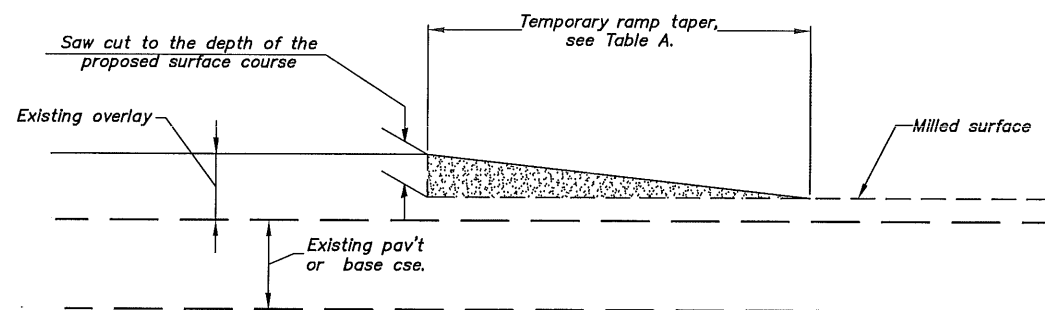


**CASE 1A: BUTT JOINT w/ SURFACE OVERLAY AND CIR**

Pay limits for Class D Patches, Type IV, 6 Inch



**CASE 1B: BUTT JOINT w/ SURFACE OVERLAY**



**TEMPORARY RAMP DETAIL**

General Notes

1. The work shall be done in accordance with Article 406.08 and the Special Provision for Butt Joints.
2. The pavement surface to be removed may be either HMA or P.C. concrete. The work shall be performed in accordance with Article 440.04 and the Special Provisions for Butt Joints.
3. The saw cut joints shall be primed just prior to the placing of HMA material. The work will be in accordance with the applicable portions of Article 406.05.

**TABLE A - TAPER RATES**

ELEMENT	POSTED SPEED < 45 MPH	POSTED SPEED => 45 MPH
BUTT JOINT	20' per 1" of DEPTH	30' per 1" of DEPTH
FEATHEREDGE	20' per 1" of THICKNESS	30' per 1" of THICKNESS LESS 3/8" from TOTAL
TEMPORARY RAMP	3' per 1" of HEIGHT	4' per 1" of DEPTH

Length of Butt Joint = Thickness of Surface Cse multiplied by the Taper Rate.  
 Length of Pav't Transition = Total Pav't thickness multiplied by the Taper Rate.

USER NAME =	DESIGNED -	REVISED -
PLOT SCALE = 1:20	DRAWN - AJM	REVISED -
PLOT DATE =	CHECKED -	REVISED -
	DATE -	REVISED -

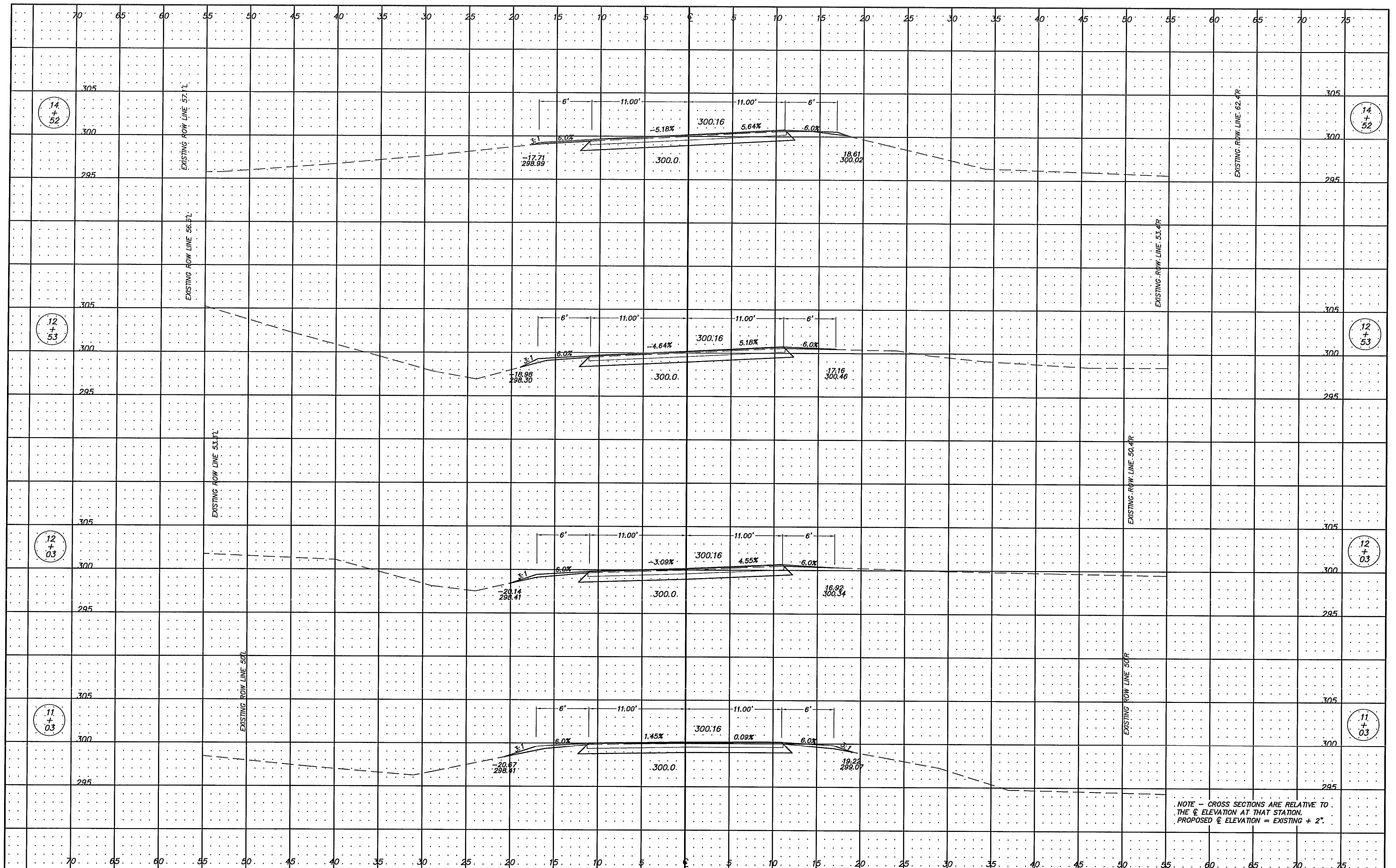
**ADAMS COUNTY  
HIGHWAY DEPARTMENT**

**BUTT JOINTS  
FEATHER EDGE TRANSITIONS**

SCALE: NONE SHEET 1 OF 1 SHEETS STA. -- TO STA. --

COUNTY	ROUTE	SECTION	TOTAL SHEETS	SHEET NO.
ADAMS	FAS 1588	19-00062-05-FP	18	12

CONTRACT 93765



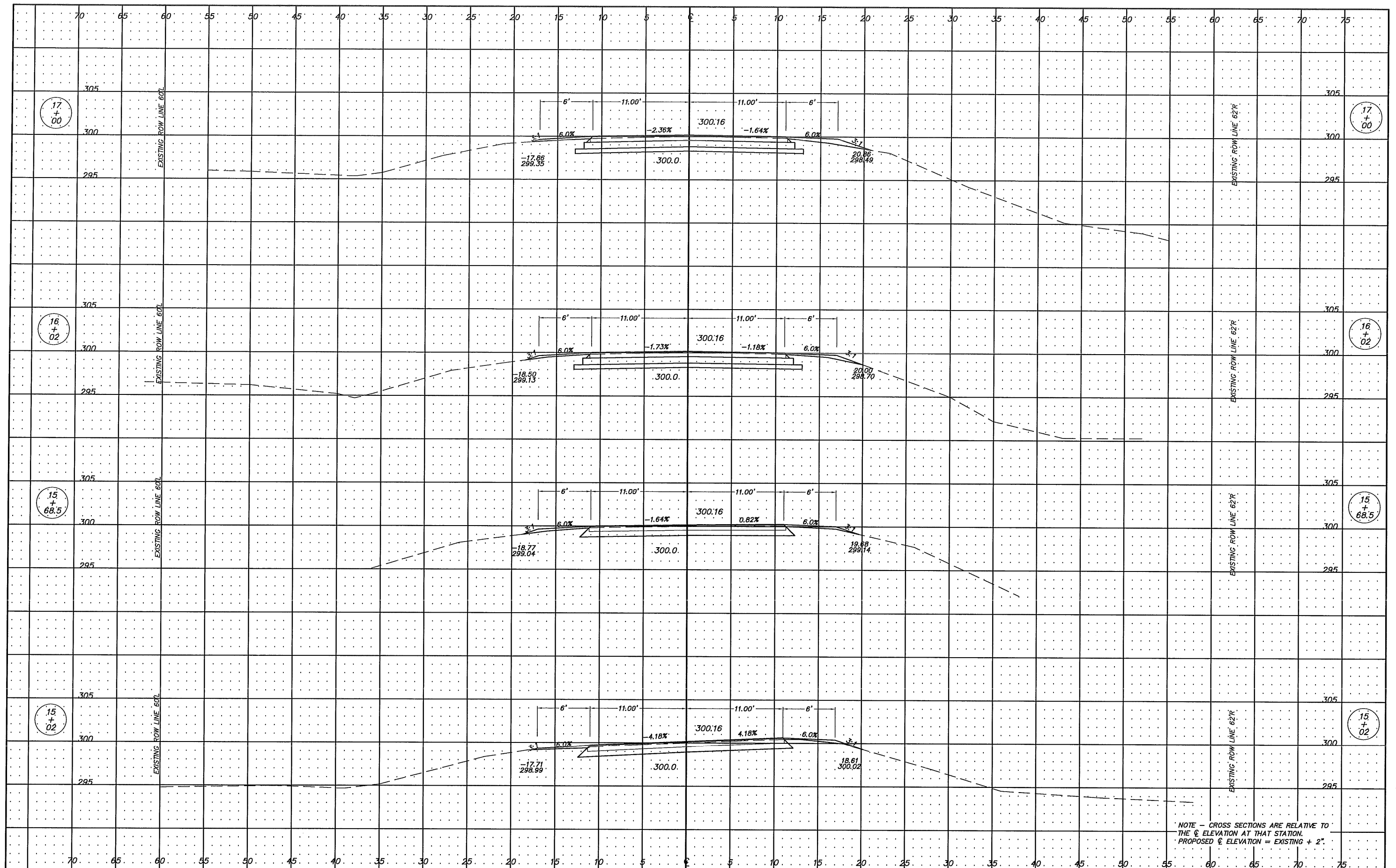
NOTE - CROSS SECTIONS ARE RELATIVE TO THE  $\pm$  ELEVATION AT THAT STATION.  
 PROPOSED  $\pm$  ELEVATION = EXISTING + 2".

USER NAME =	DESIGNED -	REVISED -
PLOT SCALE = 1:5	DRAWN - AJM/BDF	REVISED -
PLOT DATE =	CHECKED -	REVISED -
	DATE -	REVISED -

**ADAMS COUNTY  
 HIGHWAY DEPARTMENT**

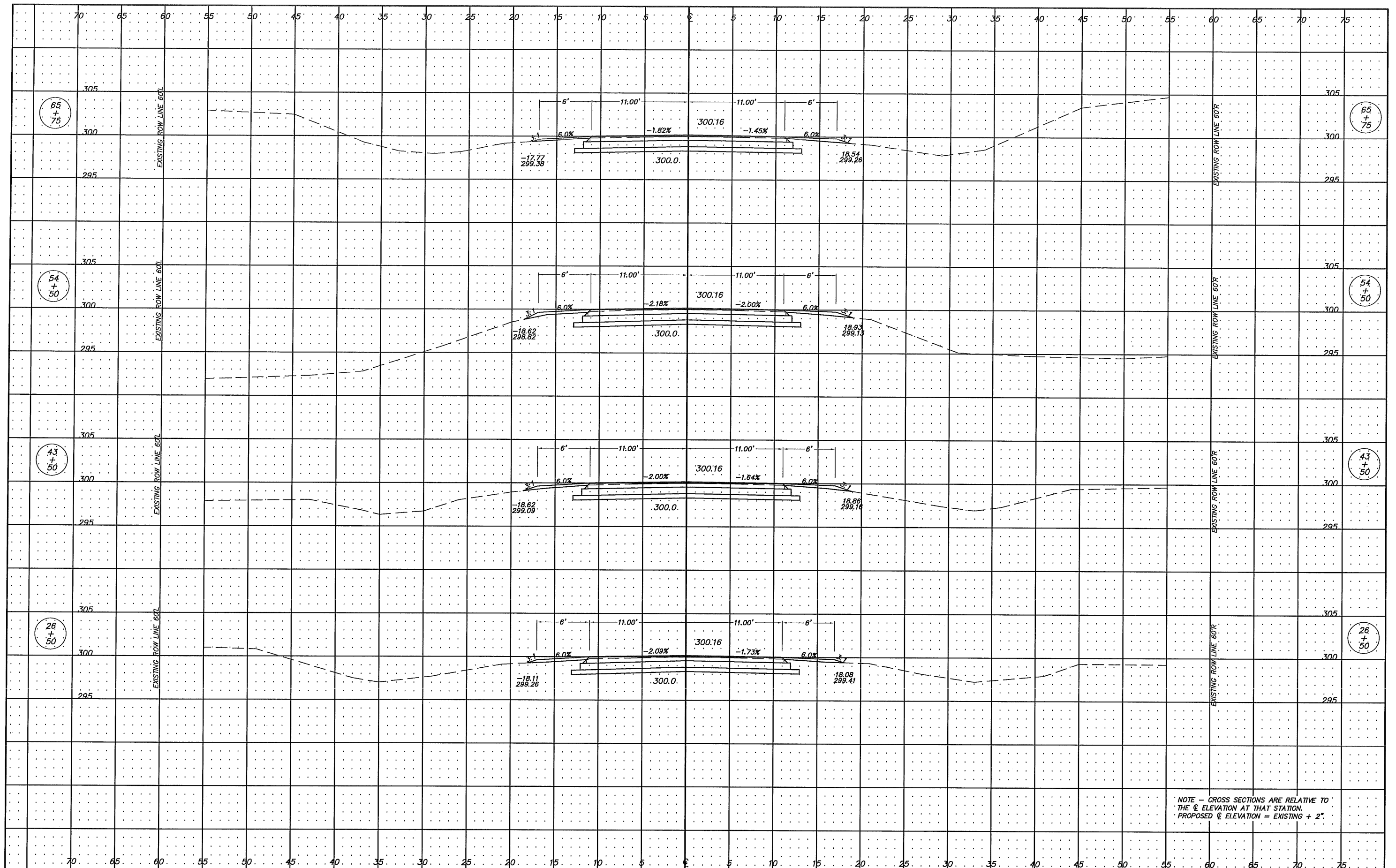
**CROSS SECTIONS**  
 SCALE 1" = 5'      SHEET 1 OF 6 SHEETS      STA. 11+03 TO STA. 14+52

COUNTY	ROUTE	SECTION	TOTAL SHEETS	SHEET NO.
ADAMS	FAS 1588	19-00062-05-FP	18	13
COUNTY HIGHWAY 48			CONTRACT 93765	



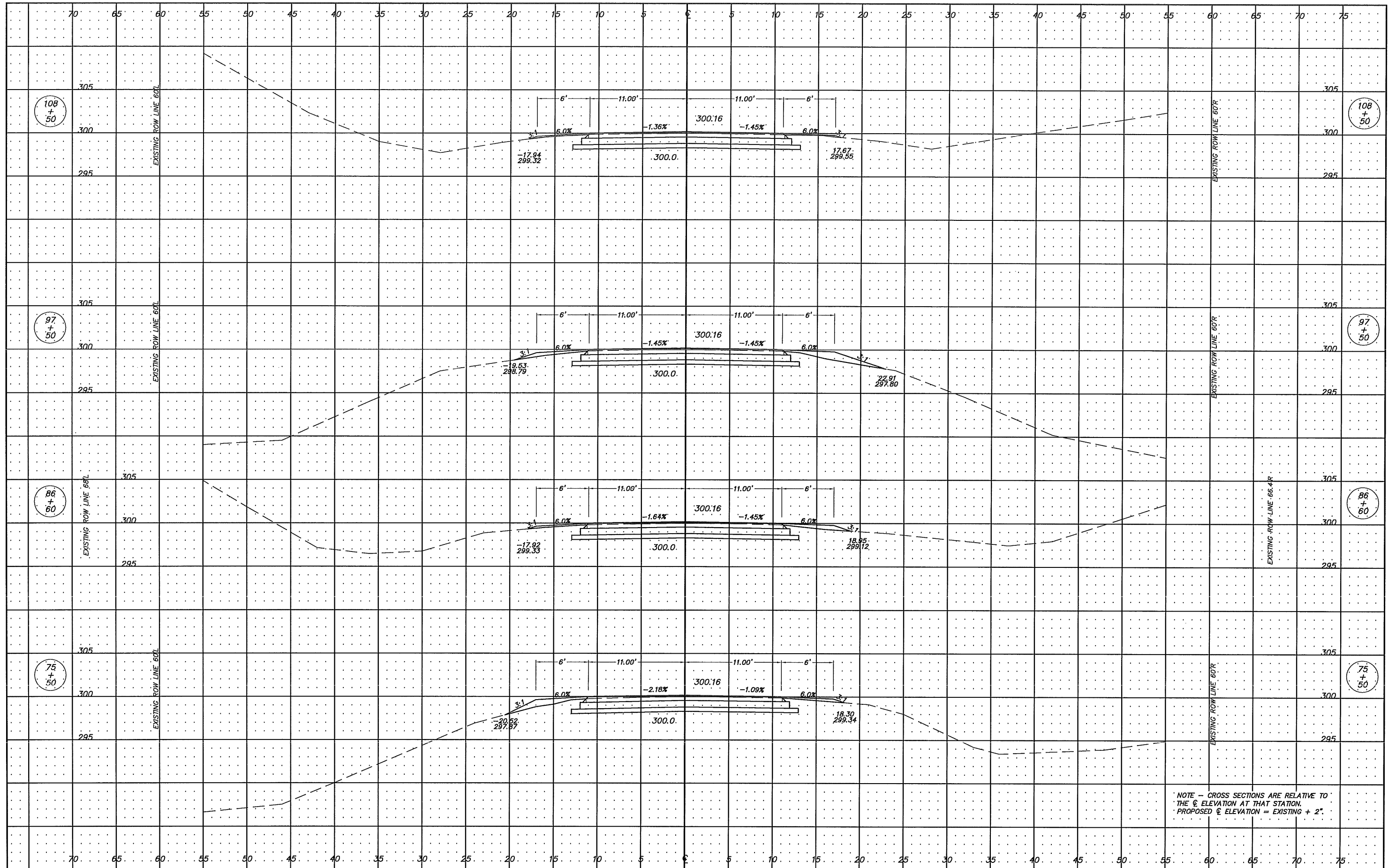
NOTE - CROSS SECTIONS ARE RELATIVE TO THE  $\odot$  ELEVATION AT THAT STATION. PROPOSED  $\odot$  ELEVATION = EXISTING + 2".

USER NAME =	DESIGNED -	REVISED -	<b>ADAMS COUNTY HIGHWAY DEPARTMENT</b>	<b>CROSS SECTIONS</b>		COUNTY	ROUTE	SECTION	TOTAL SHEETS	SHEET NO.
PLOT SCALE = 1:5	DRAWN - AJM/BDF	REVISED -		ADAMS	FAS 1588	19-00062-05-FP	18	14		
PLOT DATE =	CHECKED -	REVISED -		COUNTY HIGHWAY 48						
	DATE -	REVISED -		SCALE 1" = 5'		SHEET 2 OF 6 SHEETS	STA. 15+02 TO STA. 17+00	CONTRACT 93765		



NOTE - CROSS SECTIONS ARE RELATIVE TO THE  $\text{\textcircled{C}}$  ELEVATION AT THAT STATION.  
 PROPOSED  $\text{\textcircled{C}}$  ELEVATION = EXISTING + 2"

USER NAME =	DESIGNED -	REVISED -	<b>ADAMS COUNTY HIGHWAY DEPARTMENT</b>	<b>CROSS SECTIONS</b>		COUNTY	ROUTE	SECTION	TOTAL SHEETS	SHEET NO.
PLOT SCALE = 1:5	DRAWN - AJM/BDF	REVISED -		ADAMS	FAS 1588	19-00062-05-FP	18	15		
PLOT DATE =	CHECKED -	REVISED -		COUNTY HIGHWAY 48						
	DATE -	REVISED -				CONTRACT 93765				
			SCALE 1" = 5'	SHEET 3 OF 6 SHEETS	STA. 26+50 TO STA. 65+75					



NOTE - CROSS SECTIONS ARE RELATIVE TO THE  $\text{\textcircled{C}}$  ELEVATION AT THAT STATION.  
 PROPOSED  $\text{\textcircled{C}}$  ELEVATION = EXISTING + 2"

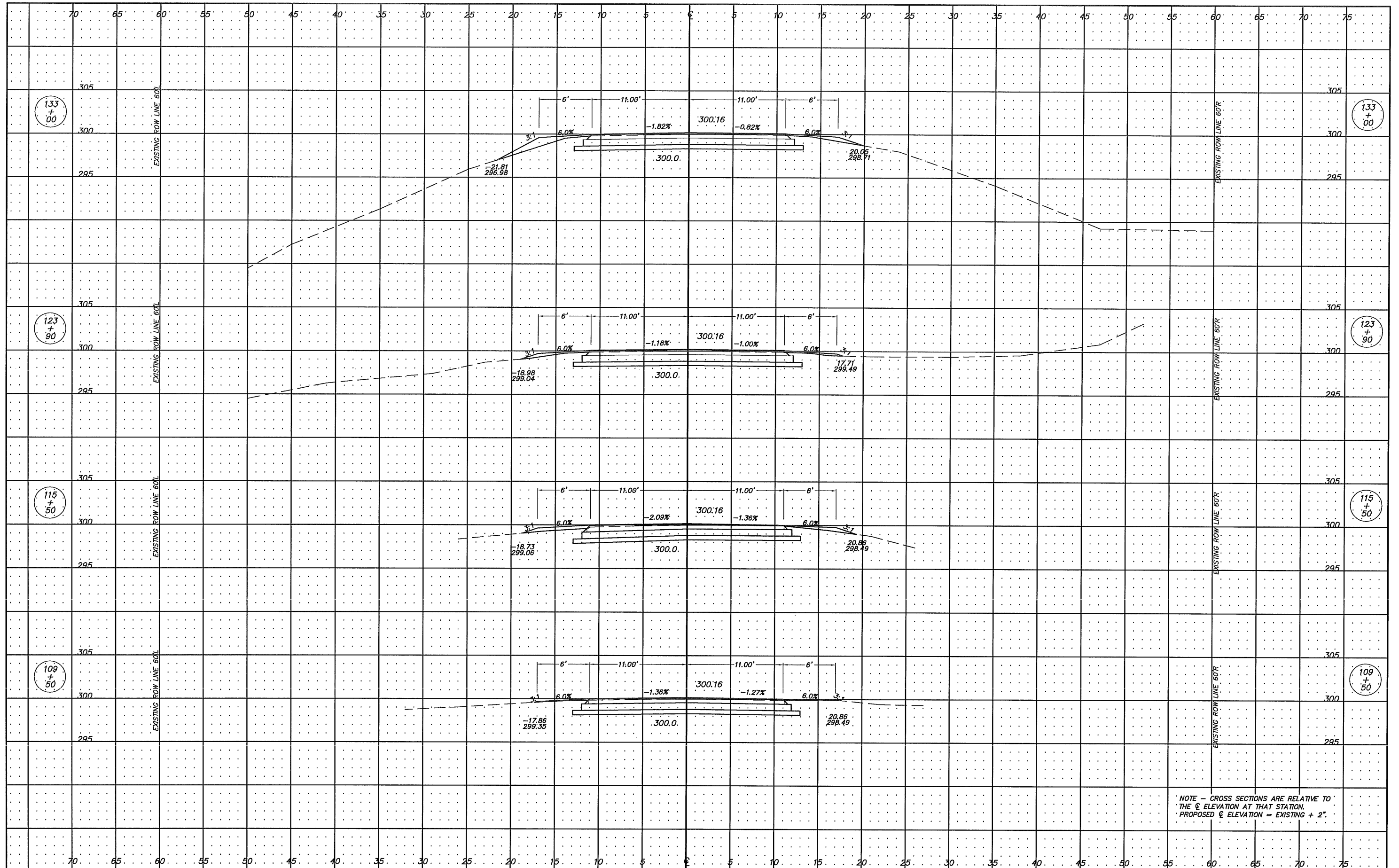
USER NAME =	DESIGNED -	REVISED -
PLOT SCALE = 1:5	DRAWN - AJM/BDF	REVISED -
PLOT DATE =	CHECKED -	REVISED -
	DATE -	REVISED -

**ADAMS COUNTY  
HIGHWAY DEPARTMENT**

**CROSS SECTIONS**  
 SCALE 1" = 5'    SHEET 4 OF 6 SHEETS    STA. 75+50 TO STA. 108+50

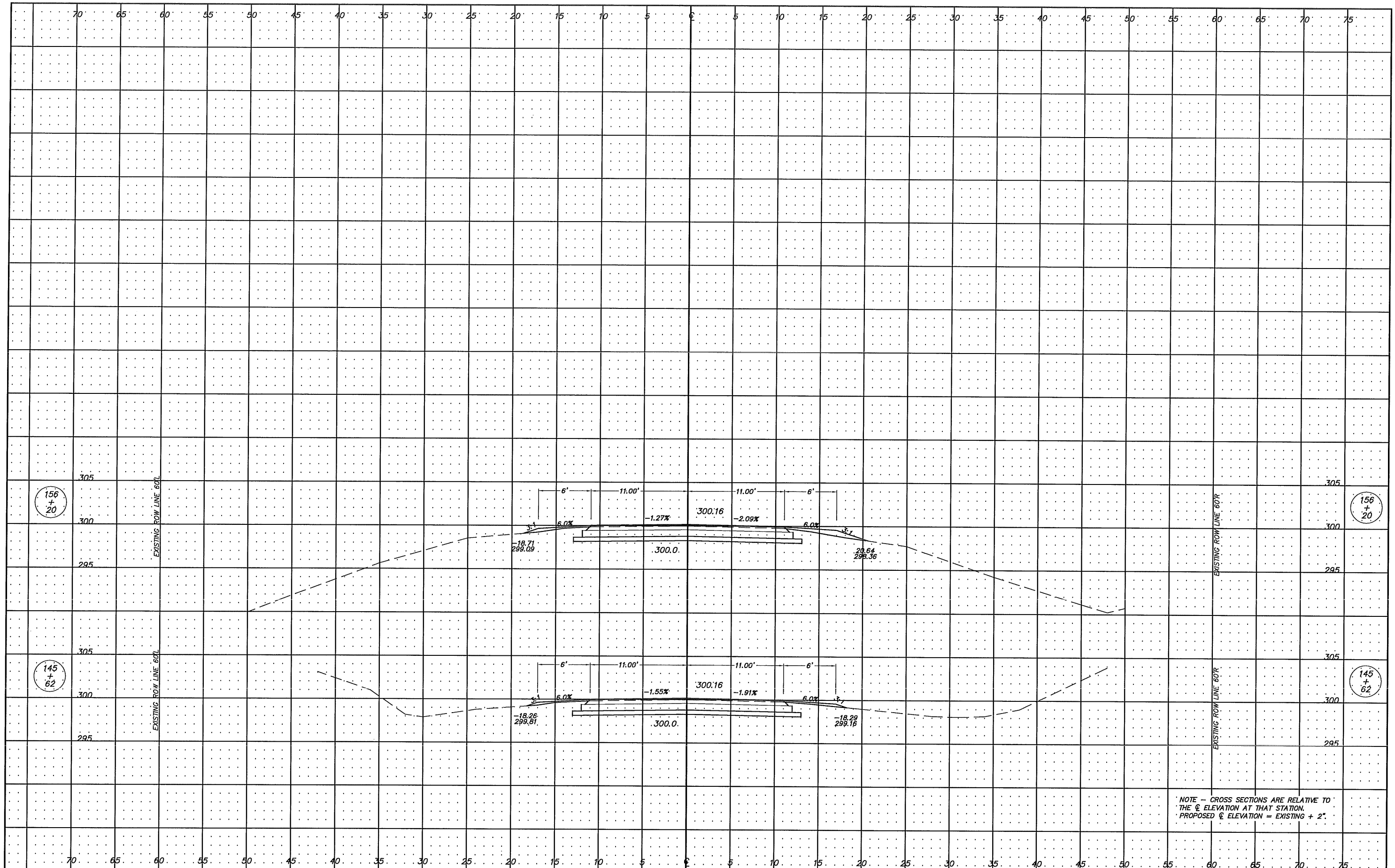
COUNTY	ROUTE	SECTION	TOTAL SHEETS	SHEET NO.
ADAMS	FAS 1588	19-00062-05-FP	18	16
COUNTY HIGHWAY 48			CONTRACT 93765	





NOTE - CROSS SECTIONS ARE RELATIVE TO THE  $\text{\textcircled{C}}$  ELEVATION AT THAT STATION.  
 PROPOSED  $\text{\textcircled{C}}$  ELEVATION = EXISTING + 2"

USER NAME =	DESIGNED -	REVISED -	<b>ADAMS COUNTY HIGHWAY DEPARTMENT</b>	<b>CROSS SECTIONS</b>		COUNTY	ROUTE	SECTION	TOTAL SHEETS	SHEET NO.
PLOT SCALE = 1:5	DRAWN - AJM/BDF	REVISED -		ADAMS	FAS 1588	19-00062-05-FP	18	17		
PLOT DATE =	CHECKED -	REVISED -		COUNTY HIGHWAY 48						
	DATE -	REVISED -		SCALE 1" = 5'	SHEET 5 OF 6 SHEETS	STA. 109+50 TO STA. 133+00	CONTRACT 93765			



NOTE - CROSS SECTIONS ARE RELATIVE TO THE @ ELEVATION AT THAT STATION.  
 PROPOSED @ ELEVATION = EXISTING + 2"

USER NAME =	DESIGNED -	REVISED -	<b>ADAMS COUNTY HIGHWAY DEPARTMENT</b>	<b>CROSS SECTIONS</b>		COUNTY	ROUTE	SECTION	TOTAL SHEETS	SHEET NO.
PLOT SCALE = 1:5	DRAWN - AJM/BDF	REVISED -		ADAMS	FAS 1588	19-00062-05-FP	18	18		
PLOT DATE =	CHECKED -	REVISED -		COUNTY HIGHWAY 48						
	DATE -	REVISED -	SCALE 1" = 5'	SHEET 6 OF 6 SHEETS	STA. 145+62 TO STA. 156+20	CONTRACT 93765				