

06-11-2021 LETTING ITEM 140

INDEX OF SHEETS

SHEET NO.	SHEET
1	COVER SHEET
2	SUMMARY OF QUANTITIES
2	APPLICATION RATES
2	TYPICAL CROSS SECTIONS
3	PLAN SHEET

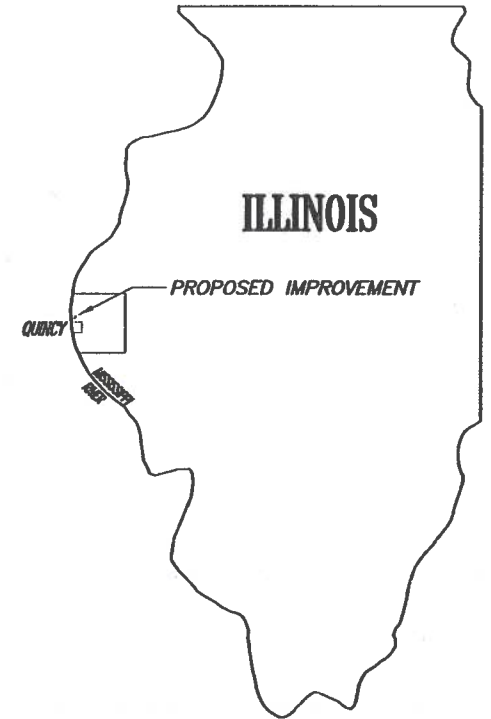
HIGHWAY STANDARDS

- 701301-04
- 701306-04
- 701311-03
- 701901-08
- 780001-05

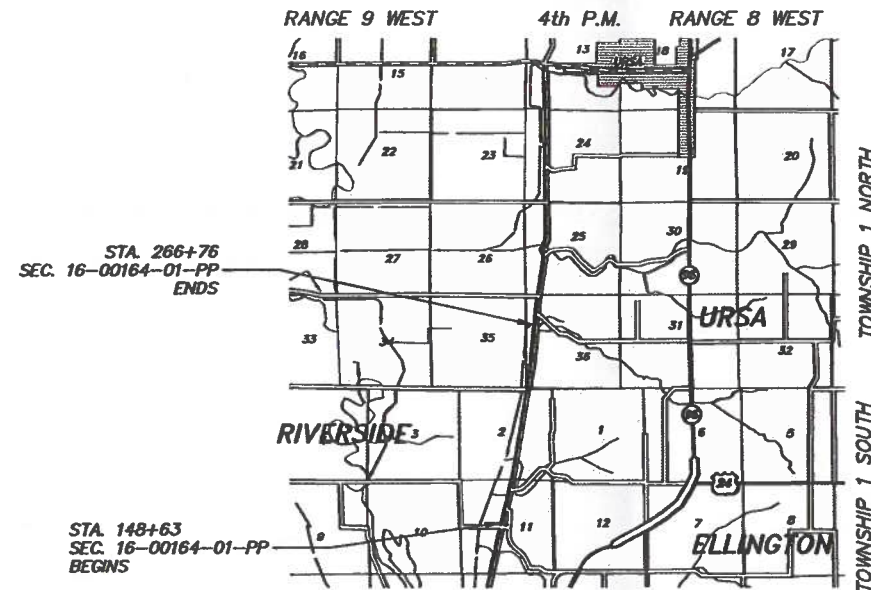
STATE OF ILLINOIS
DEPARTMENT OF TRANSPORTATION
DIVISION OF HIGHWAYS
PLANS FOR PROPOSED
SURFACE TRANSPORTATION / RURAL PROGRAM
ADAMS COUNTY
FAS RTE. 1600 (COUNTY HIGHWAY 7)
SECTION 16-00164-01-PP
PROJECT NO. Y8DZ(607)
JOB NO. C-96-002-22

COUNTY	ROUTE	SECTION	SHT. NO.
ADAMS	FAS 1600	16-00164-01-PP	1

COVER SHEET



PROPOSED IMPROVEMENT MARKED THUS —



PROPOSED IMPROVEMENT CONSISTS OF PLACING A CAPE SEAL SURFACE PRESERVATION TREATMENT AND ANY NECESSARY SURFACE PREPARATION.

LOCATION MAP



SUMMARY OF LENGTH:

GROSS LENGTH CH 7 (FAS 1600)
 STA. 148+63 TO STA. 266+76 = 11,813 FT.

TOTAL NET LENGTH OF SECTION 16-00164-01-PP = 11,813 FT. = 2.237 MILES

THESE PLANS WERE PREPARED BY ME OR BY A FULL-TIME MEMBER
 OF MY STAFF WORKING UNDER MY PERSONAL SUPERVISION.

UTILITIES:

J.U.L.I.E. _____ 1-800-892-0123

SUBMITTED BY James R. Franke DATE 2/1/2021
 COUNTY ENGINEER
 LICENSE NO. 062-044792
 LIC. EXPIRES 11/30/2021



APPROVED	<u>February 1</u>	2021
	<u>James R. Franke</u>	COUNTY ENGINEER
PASSED	<u>February 23</u>	2021
	<u>Bill Smith</u>	DISTRICT SIX ENGINEER OF LOCAL ROADS AND STREETS
RELEASING FOR BID BASED ON LIMITED REVIEW	<u>February 23</u>	2021
	<u>Jeff P. Maguire</u>	REGION FOUR ENGINEER

STATE OF ILLINOIS
DEPARTMENT OF TRANSPORTATION

PREPARED BY:
 ADAMS COUNTY HIGHWAY DEPARTMENT
 101 NORTH 54th STREET, QUINCY, ILLINOIS

SUMMARY OF QUANTITIES

PAY ITEM	PAY ITEM DESCRIPTION	TOTAL QUANTITY	UNIT	SPECIAL PROVISION
40500061	CAPE SEAL	29,007	SQ YD	*
67100100	MOBILIZATION	1	L SUM	*
70300100	SHORT TERM PAVEMENT MARKING	1,181	FOOT	
70300150	SHORT TERM PAVEMENT MARKING REMOVAL	394	SQ FT	
78001110	PAINT PAVEMENT MARKING - LINE 4"	6,360	FOOT	
78300201	PAVEMENT MARKING REMOVAL - GRINDING	2,747	SQ FT	
X7010216	TRAFFIC CONTROL AND PROTECTION, (SPECIAL)	1	L SUM	*

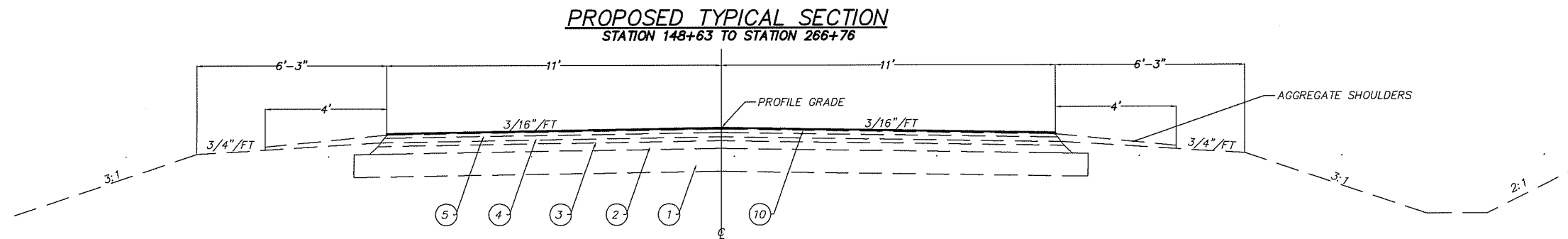
△ SPECIALTY ITEMS

APPLICATION RATES

BITUMINOUS MATERIALS FOR SEAL COAT - .38 GAL./SQ. YD.
SEAL COAT (AGGREGATE) - 22 LBS./SQ. YD.

ITEM DESCRIPTION FOR SEAL COAT (ESTIMATING PURPOSES ONLY)	TOTAL QUANTITY	UNIT
BITUMINOUS MATERIALS FOR SEAL COAT	11,023	GAL
SEAL COAT (AGGREGATE)	319	TON

TYPICAL SECTIONS

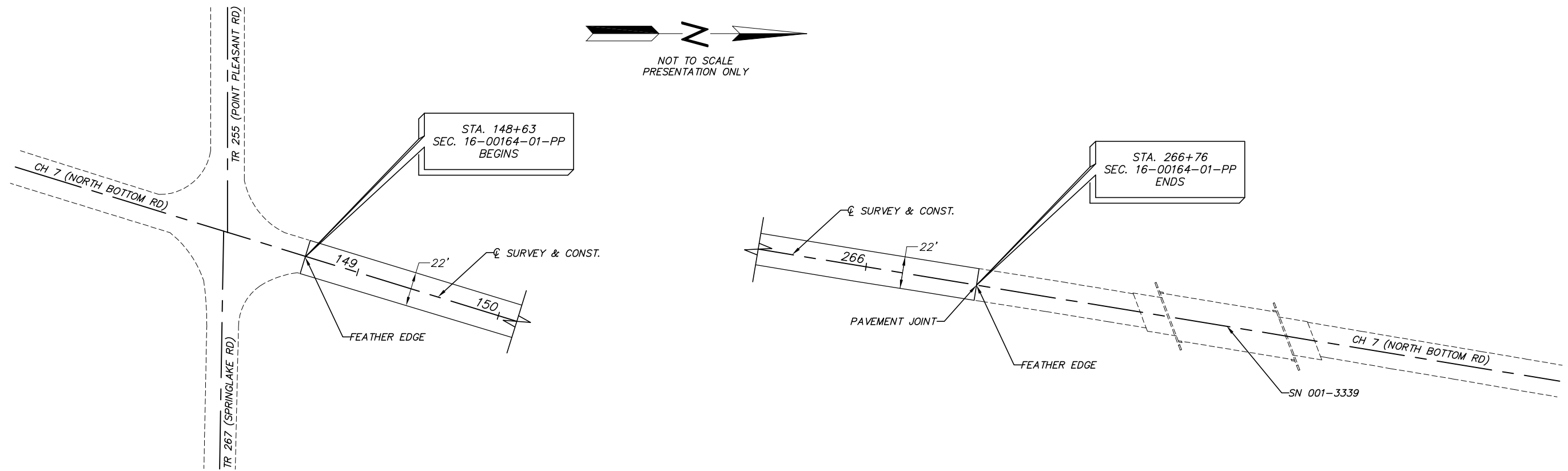


- EXISTING MATERIALS:**
- 9" AGGREGATE BASE COURSE, TYPE A
 - 3" BITUMINOUS CONCRETE BINDER COURSE
 - 1 1/2" BITUMINOUS CONCRETE SURFACE COURSE MIXTURE "C", CLASS 1
 - 1 3/4" BITUMINOUS CONCRETE BINDER COURSE, SUPERPAVE, N50
 - 1 1/4" POLYMERIZED BITUMINOUS CONCRETE SURFACE COURSE, SUPERPAVE, MIX "C", N50

- PROPOSED MATERIALS:**
- CAPE SEAL SURFACE TREATMENT, TYPE II

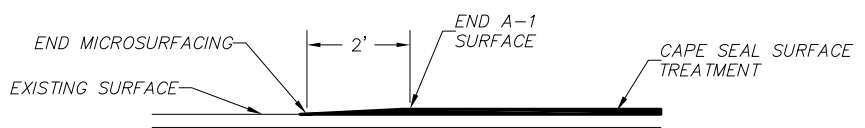
- PREVIOUS SECTIONS:**
- SEC. 710
 - SEC. 83-00106-00-FP
 - SEC. 93-00147-02-SD
 - SEC. 98-00164-00-FP

USER NAME =	DESIGNED -	REVISED -	ADAMS COUNTY HIGHWAY DEPARTMENT	SUMMARY OF QUANTITIES, APPLICATION RATES, TYPICAL SECTIONS			COUNTY	ROUTE	SECTION	TOTAL SHEETS	SHEET NO.
PLOT SCALE = 1:1	DRAWN - AJM	REVISED -		SCALE 1:1	SHEET 1 OF 1	STA. --- TO STA. ---	ADAMS	FAS 1600	16-00164-01-PP	3	2
PLOT DATE =	CHECKED -	REVISED -					COUNTY HIGHWAY 7				
	DATE -	REVISED -					CONTRACT 93766				



LOCATION / STA. - STA.	PAINT PAVEMENT MARKING - LINE 4" (YELLOW - SOLID)	PAINT PAVEMENT MARKING - LINE 4" (YELLOW - DASH)
	FOOT	FOOT
RT. STA. 205+00 - 208+90	390	
LT. STA. 215+93 - 220+14	421	
RT. STA. 226+31 - 232+90	659	
LT. STA. 237+28 - 243+79	651	
RT. STA. 245+51 - 251+94	643	
LT. STA. 255+93 - 262+29	636	
STA. 148+63 - STA. 266+76		2960
SUB-TOTALS	3,400	2,960
PAINT PAVEMENT MARKING LINE - 4"	6,360	

FEATHER EDGE DETAIL



**ADAMS COUNTY
HIGHWAY DEPARTMENT**

**PLAN, PAVEMENT MARKING
SCHEDULE + DETAIL**

SCALE SHEET 1 OF 1 STA. 148+63 TO STA. 266+76

COUNTY	ROUTE	SECTION	TOTAL SHEETS	SHEET NO.
ADAMS	FAS 1600	16-00164-01-PP	3	3
COUNTY HIGHWAY 7			CONTRACT 93766	