

Bench Mark: Southeast corner of the roof at "Marchese and Son, Inc." located at intersection of Central Avenue and Monaco Drive, Elev. 811.68

Existing Structure: None

Proposed Structure: The proposed retaining wall is a driven soldier pile wall with a cast-in-place concrete facing. A pipe handrail will be mounted to the top of the wall.

Traffic Control: Standard TC-17 - Traffic Control Details for Freeway Shoulder Closures and Partial Ramp Closures

DESIGN SPECIFICATIONS

2020 AASHTO LRFD Bridge Design Specifications, 9th Edition

P.I. Sta. 32+80.00 Elev. 665.09	+1.65%	P.I. Sta. 34+64.30 Elev. 668.74	+0.93%	P.I. Sta. 36+63.00 Elev. 669.98
------------------------------------	--------	------------------------------------	--------	------------------------------------

PROFILE GRADE

(Along IL 38 Ramp WB to IL 83 NB)

DESIGN STRESSES

FIELD UNITS

f'c = 3,500 psi
 fy = 60,000 psi (Reinforcement)
 fy = 50,000 psi (M270 Grade 50)
 fb = 1,600 psi (Untreated Timber Lagging)

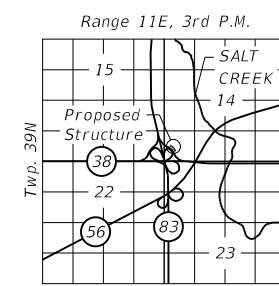
CURVE DATA

(IL 38 Ramp WB to IL 83 NB)

EX CURVE C-2	EX CURVE C-3
P.I. Sta. = 34+41.95	P.I. Sta. = 36+46.96
Δ = 49° 48' 13" (LT)	Δ = 05° 11' 04" (RT)
D = 20° 04' 47"	D = 02° 54' 00"
R = 285.34'	R = 1,975.65'
T = 132.46'	T = 89.45'
E = 29.25'	E = 2.02'
P.C. Sta. = 33+09.49	P.C. Sta. = 35+57.52
P.T. Sta. = 35+57.52	P.T. Sta. = 37+36.29

LEGEND

- Soil Boring
- Prop. Guardrail
- Exist. Gas Line
- Exist. Aerial Line
- Construction Joint
- Expansion Joint
- Kink Point
- Exist. Lumineer

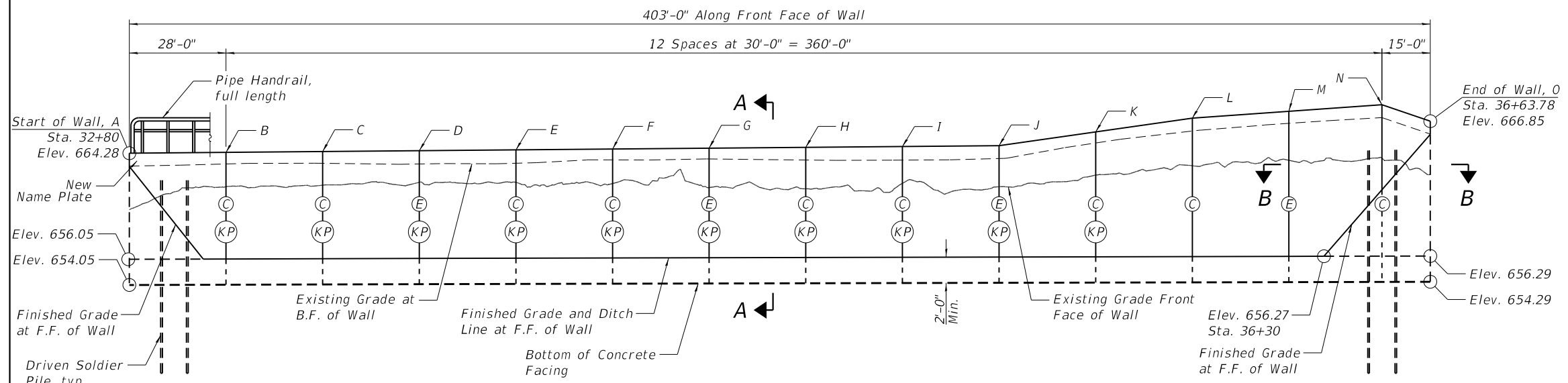


LOCATION SKETCH

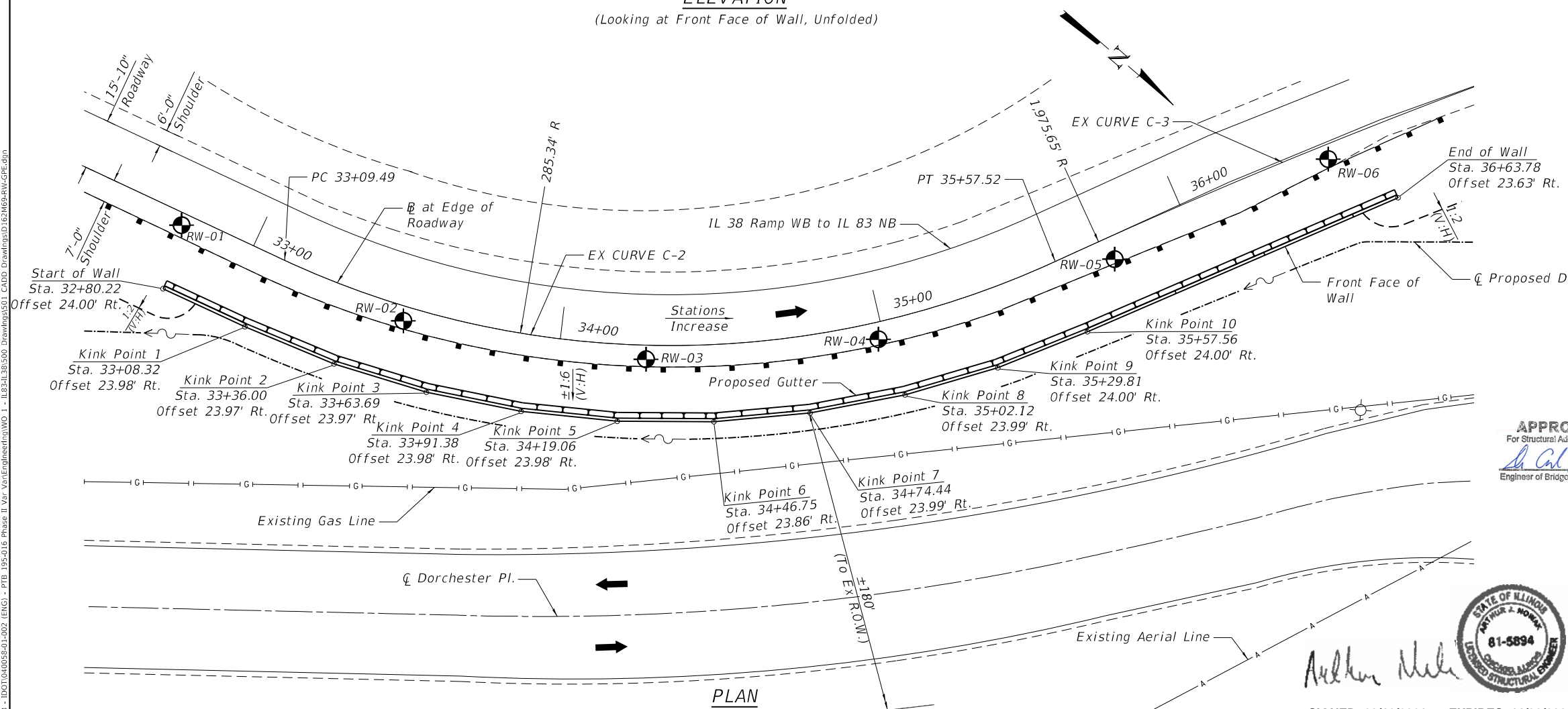
GENERAL PLAN AND ELEVATION

**ILLINOIS ROUTE 83 OVER
 DITCH AT ILLINOIS ROUTE 38 (WB) RAMP**

F.A.P. RTE. 344 - SECTION 2020-196-T
 DUPAGE COUNTY
 STATION 32+80 TO 36+64
 STRUCTURE NO. 022-W001



ELEVATION
 (Looking at Front Face of Wall, Unfolded)



PLAN

APPROVED
 For Structural Adequacy Only
Sh. Carl Pappas
 Engineer of Bridges & Structures



SIGNED: 03/12/2021 EXPIRES: 11/30/2022

MODEL: 03/20/21 - 02/26/21
 FILE NAME: P:\030225 - DOT\030225\01-002 (ENG) - PTB_195-016 Phase II Var. Van.Engineering\W01 - IL031138\500 Drawings\01 CADD Drawings\01 022-W001-01.dwg
 PLOT DATE = 3/10/2021



USER NAME = atiemann	DESIGNED - AS	REVISED -
PLOT SCALE = 40:0 ft/in	DRAWN - AHT	REVISED -
PLOT DATE = 3/10/2021	CHECKED - AJN	REVISED -
	DATE - 3/11/2021	REVISED -

**STATE OF ILLINOIS
 DEPARTMENT OF TRANSPORTATION**

**GENERAL PLAN AND ELEVATION
 RETAINING WALL - STRUCTURE NO.022-W001**

SCALE: SHEET RET-1 OF RET-11 SHEETS STA. TO STA.

F.A.P. RTE. 344	SECTION 2020-196-T	COUNTY DUPAGE	TOTAL SHEETS 122	SHEET NO. 66
ILLINOIS FED. AID PROJECT			CONTRACT NO. 62M69	

RET-01