

06-11-2021 LETTING ITEM 192

INDEX OF SHEETS

Sheet No.	Description
1	COVER SHEET
2	TYPICAL CROSS SECTION AND DETAILS
3	DETAILS & SCHEDULES

STANDARDS

701301-04	LANE CLOSURE 2L2W-SHORT TIME OP
701306-04	LANE CLOSURE 2L2W, SLOW MOVING OP. DAY ONLY > 45 MPH
000001-68	STANDARD SYMBOLS, ABBREVIATIONS AND PATTERNS
701901-08	TRAFFIC CONTROL DEVICES

SUMMARY OF QUANTITIES

* 40600982	HOT-MIX ASPHALT SURFACE REMOVAL - BUTT JOINT	420 SQYD
40600990	TEMPORARY RAMP	58 SQ YD
* 40602965	HOT-MIX ASPHALT BINDER COURSE, IL-9.5FG, N50	1866 TON
* 40604050	HOT MIX ASPHALT SURFACE COURSE, IL-9.5, MIX "C", N50	2255 TON
* 40800029	BITUMINOUS MATERIALS (TACK COAT)	17939 POUND
40800050	INCIDENTAL HOT-MIX ASPHALT SURFACING	198 TON
* 44000155	HOT-MIX ASPHALT SURFACE REMOVAL, 1 1/2"	563 SQ YD
48101200	AGGREGATE SHOULDERS, TYPE B	2137 TON
67100100	MOBILIZATION	1 L SUM
70100460	TRAFFIC CONTROL AND PROTECTION, STANDARD 701306	1 L SUM
70300100	SHORT TERM PAVEMENT MARKING	3189 FOOT
X4401198	HOT-MIX ASPHALT SURFACE REMOVAL, VARIABLE DEPTH	98 SQ YD
* 20033700	LONGITUDINAL JOINT SEALANT	10646 FOOT
* 20034105	MATERIAL TRANSFER DEVICE	4121 TON

Construction Code 0005

* Special Provisions

CONTRACT NO. 87748

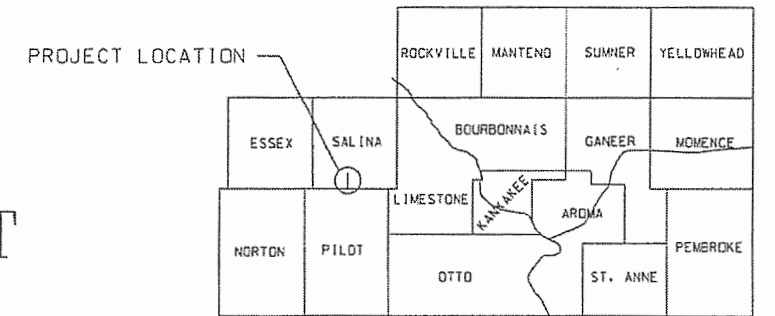
J.U.L.I.E. 1-800-892-0123

STATE OF ILLINOIS
DEPARTMENT OF TRANSPORTATION
COUNTY OF KANKAKEE
DEPARTMENT OF HIGHWAYS
PLANS FOR PROPOSED
FEDERAL AID SECONDARY PROJECT
SECTION 16-00218-02-RS
F.A.S. 1303 (CH.47)
JOB NO. C-93-014-21

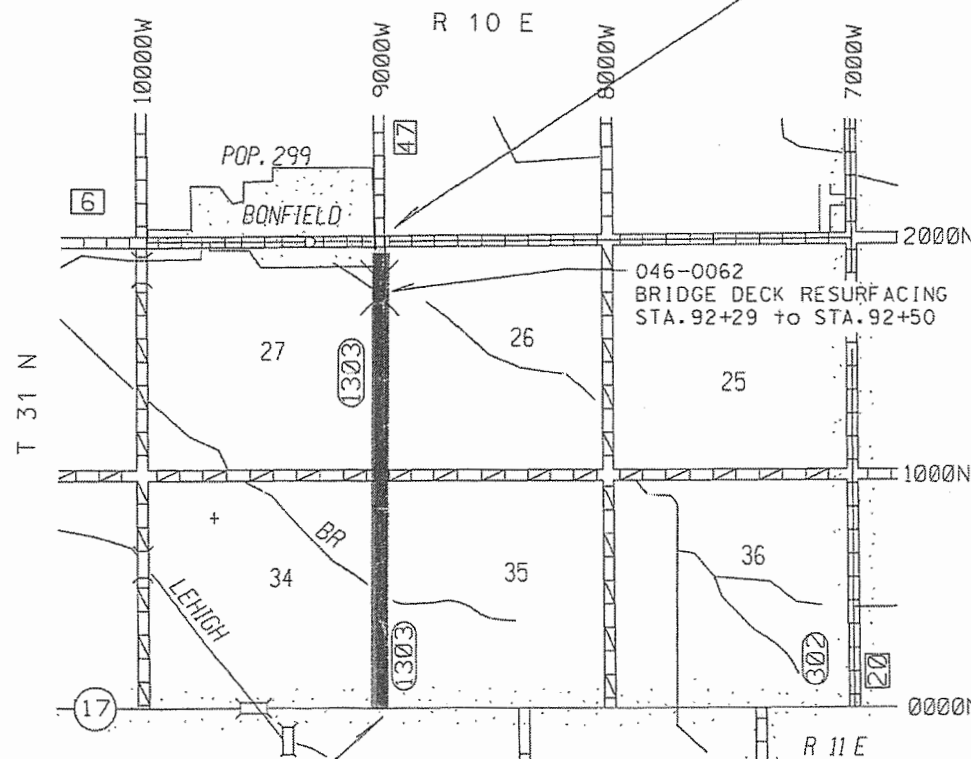
F. A. S. ROUTE NO.	SEC.	COUNTY	NO. SHEETS	SHEET NO.
1303	*	Kankakee	3	1

ILLINOIS' PROJECT DGPX (705)

* 16-00218-02-RS



KANKAKEE COUNTY



CONSTRUCTION STARTS
STA. 0+15
(N. ER IL RT 17)

LOCATION MAP

CONSTRUCTION ENDS
STA. 106+61
(STA. 106+61 = S. ER 2000N RD)

THE ACCEPTANCE OF THIS PROJECT IS BASED ON THE MINIMUM DESIGN CRITERIA FOR LOCAL AGENCY PAVEMENT PRESERVATION POLICY (LAPP) PROJECTS

CLASS III ROAD
2021 CURRENT A.D.T. = 830
2041 DESIGN A.D.T. = 910
DESIGN SPEED = 55 M.P.H.
ROADWAY CLASSIFICATION=COLLECTOR

STATE OF ILLINOIS
DEPARTMENT OF TRANSPORTATION
DIVISION OF HIGHWAYS

Submitted March 16, 2021

Mark Rogers
Mark Rogers, P.E.
County Engineer

Passed April 9, 2021

Steve Chery
Steve Chery, P.E.
Bureau Chief, Local Roads & Streets

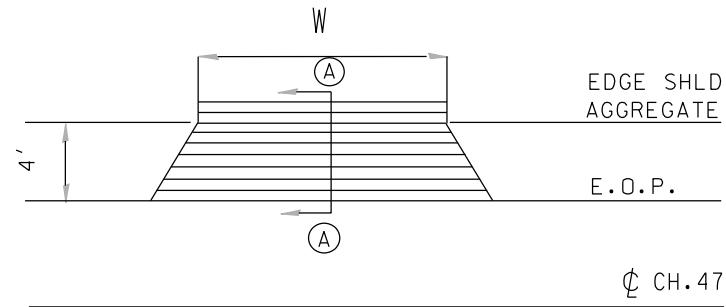
Approved April 9, 2021

Masood Ahmed
Masood Ahmed, P.E.
Region 2 Engineer

NET LENGTH = 10.646 LIN FT = 2.02 MILES

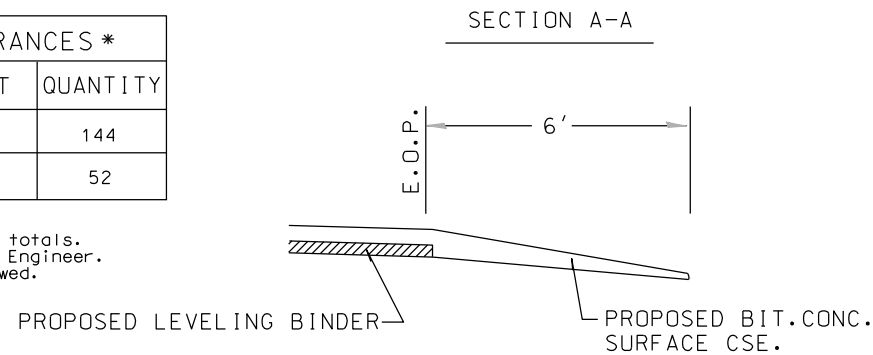
TYPICAL ENTRANCE DETAIL

W :WIDTH OF APPROACH PADS IS ESTIMATED AT 20' PER ENTRANCE . THE ACTUAL CONSTRUCTED WIDTH MAY VARY AS DIRECTED BY THE ENGINEER TO FIT THE EXISTING ENTRANCES . FIELD ENTRANCES SHALL NOT RECEIVE BIT.CONCRETE SURFACING

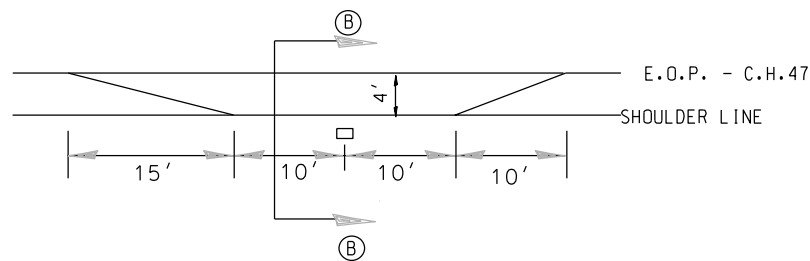


ESTIMATED QUANTITIES- 16 ENTRANCES *		
ITEM	UNIT	QUANTITY
BITUMINOUS MATERIALS (TACK COAT)	POUND	144
HMA SURFACE CSE. Mix C N50	TON	52

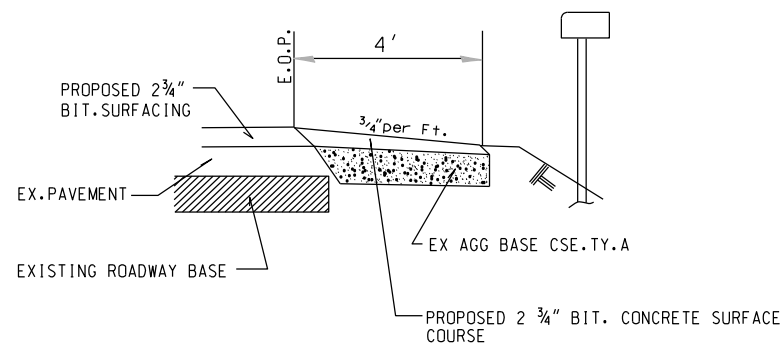
Quantities are included in Incidental HMA totals. Paving will be machine method approved by Engineer. Half screed paver method will not be allowed.



TYPICAL MAILBOX TURNOUT DETAIL



SECTION B-B



Quantities are included in Incidental HMA totals. Paving will be machine method approved by Engineer. Half screed paver method will not be allowed.

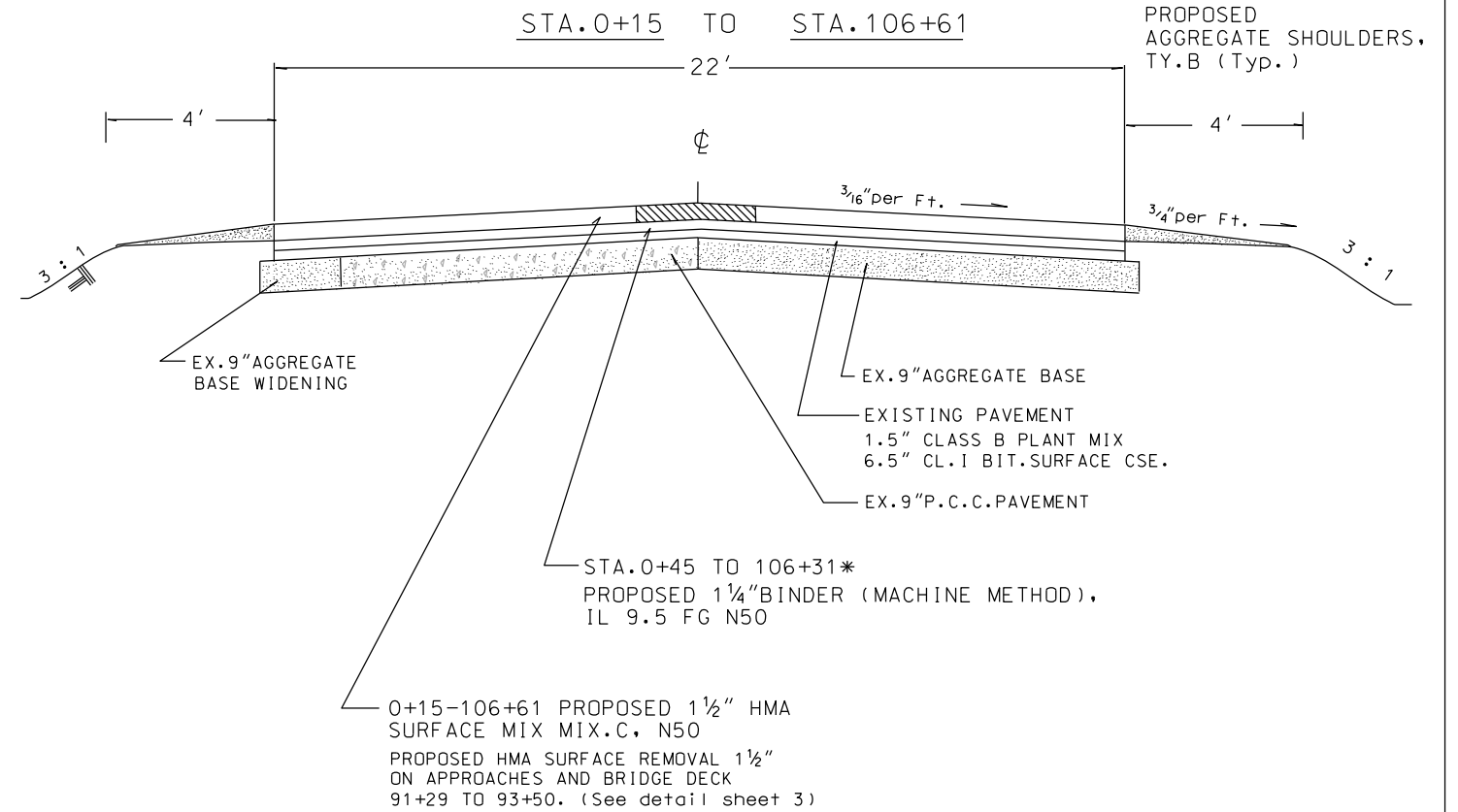
MAILBOX TURNOUT SCHEDULE			
STATION	SIDE	STATION	SIDE
3+55	LT	36+29	LT
5+75	LT	59+45	LT
8+34	LT	80+97	RT
12+86	LT	82+34	RT
16+52	LT	87+74	RT
26+12	LT		

ESTIMATED QUANTITIES - 11 MAILBOX TURNOUTS		
ITEM	UNIT	QUANTITY
BIT. MATERIALS (TACK COAT)	POUND	92
HMA SURFACE CSE. MIX C . N50	TON	46

SECTION	COUNTY	TOTAL SHEETS	SHEET NO.
16-00218-02-RS	KANKAKEE	3	2

ILLINOIS PROJECT DGPX (705)

TYPICAL CROSS SECTION



* BRIDGE OMISSION STA.92+29 TO 92+50

PROPOSED LONGITUDINAL JOINT SEALANT PLACED UNDER THE SURFACE LIFT. See Special Provisions.

ESTIMATED QUANTITIES ON TANGENTS

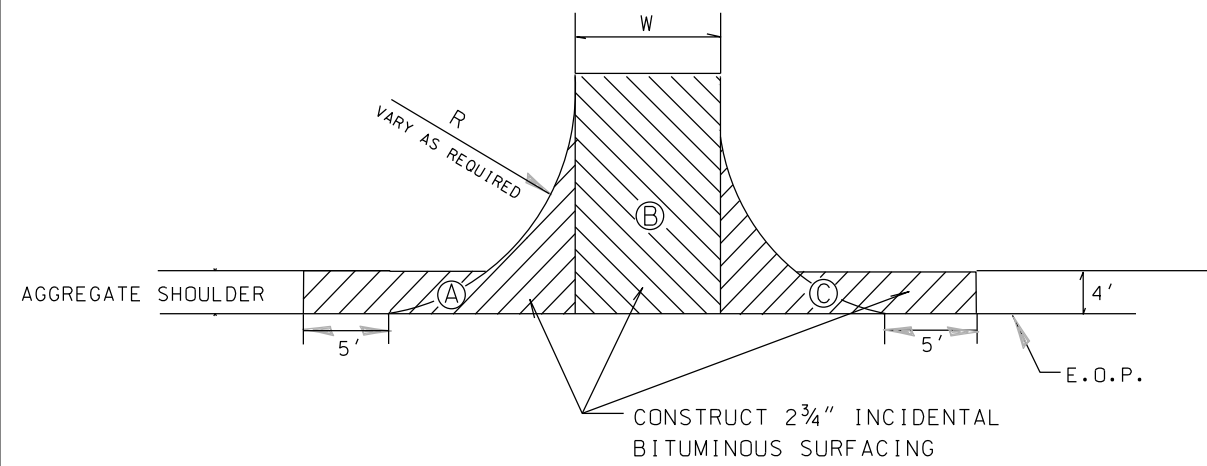
ITEM	UNIT	QUANTITY
AGGREGATE SHOULDERS TY.B	TON	2137
BITUMINOUS MATERIALS (TACK COAT)	POUND	17508 (11645@0.05/5864@ 0.025)
BINDER (MM) IL 9.5 FG N50	TON	1866
HMA SURF CRSE MIX C . N50	TON	2255
LONGITUDINAL JOINT SEALANT	FOOT	10646
SHORT-TERM PAVEMENT MARKING	FOOT	3189 (1063'@ 3 applications)
MATERIAL TRANSFER DEVICE	TON	4121

CONTRACT NO.87748

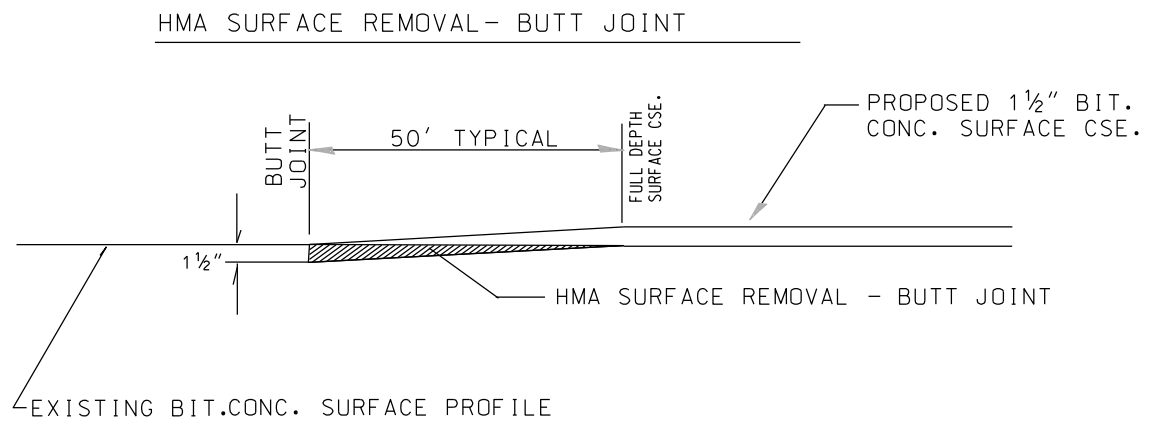
SECTION	COUNTY	TOTAL SHEETS	SHEET NO.
16-00218-01-RS	KANKAKEE	3	3

ILLINOIS PROJECT DGPX (705)

INTERSECTION DETAIL



PAVEMENT REMOVAL DETAILS



STATION	AREA		WIDTH	RADIUS	INCIDENTAL BIT. SURFACING (TON)	BIT. MATRLS. (PRIME COAT) (POUND)	LOCATION
	A	C					
0+15	A	C		30	15	29	IL RT 17
53+40 LT	A	B C	16	20	15	29	1000N
53+40 RT	A	B C	16	20	15	29	1000N
96+48 LT	A	B C	30	30	15	29	STONE CREEK
106+61	A	C		30	40	76	2000N
TOTALS					100	195	

Quantities are included in Incidental HMA totals. Paving will be machine method approved by Engineer. Half screed paver method will not be allowed.

STATION	HMA SURFACE REMOVAL - BUTT JOINT	HMA SURFACE REMOVAL 1 1/2"	HMA SURF REMOVAL VARIABLE DEPTH	TEMPORARY RAMP 3' Wide, Full Width
0+15	162 SQ. YD.			29 SQ. YD.
53+40 LT (16' x 14')	25 SQ. YD.			
53+40 RT (16' x 14')	25 SQ. YD.			
91+29-92+29 Br App		244 SQ. YD.		
92+29-92+50 Br Deck		75 SQ. YD.		
92+50-93+50 Br App		244 SQ. YD.		
96+48 LT (30' x 14')	46 SQ. YD.			
95+93 LT, 96+99 LT Radi (2)			49/49 SQ. YD.	-
106+61	162 SQ. YD.			29 SQ. YD.
TOTALS	420 SQ. YD.	563 SQ. YD.	98 SQ. YD.	58 SQ. YD.

Pavement Design Data

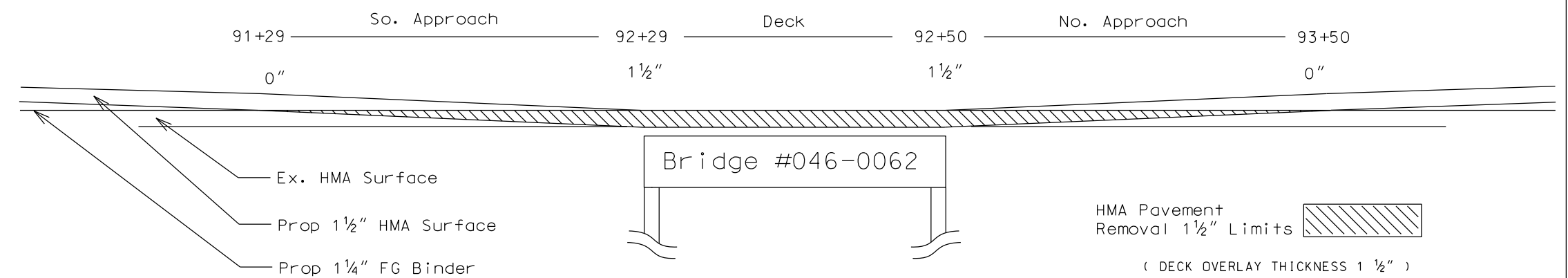
Design Period = 20 Years
 ADT = 830 (2021) 910 (2031)
 P.V. = 88% = 801 S.U. = 7% = 64 M.U. = 5% = 46
 T.F. = 0.248
 S.N.f. = 3.70

Pavement Structure Number

Ex. 9" Agg. Base (crushed)	9	x 0.08 =	0.72
Ex. 1 1/2" HMA BASE CRSE	1.5	x 0.17 =	0.26
Ex. 4 1/2" Bit. CL. I Surfacing	4.5	x 0.23 =	1.04
Ex. 2" IL 9.5 HMA SURFACE	2	x 0.30 =	0.60
Prop. 2 3/4" IL 9.5 N50	2.75	x 0.40 =	1.10
			3.72

Marshall Stability ≥ 1700

HMA SURFACE REMOVAL 1 1/2" DETAIL



CONTRACT NO. 87748