

022-0001

F.A.I. RTE.	SECTION	COUNTY	TOTAL SHEETS	SHEET NO.
55	022, 28, 29, 99 & 99 [1&2] RS-5	WILL/DUPAGE	86	1

131  
 SN 099-0028 I-55 / Joliet Rd  
 SN 022-0001 I-55 / Lemont Rd  
 SN 099-0260 I-55 / Rte 53

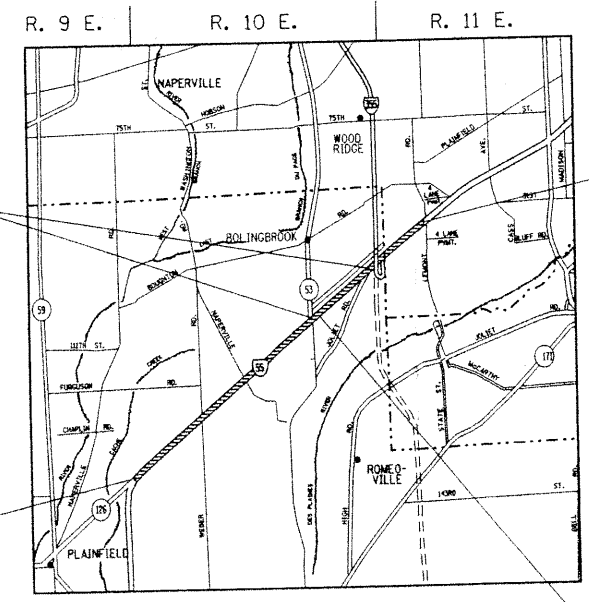
STATE OF ILLINOIS  
 DEPARTMENT OF TRANSPORTATION  
 DIVISION OF HIGHWAYS

# PROPOSED HIGHWAY PLANS

F.A.I. ROUTE 55 (INTERSTATE 55)  
 SECTION (22, 28, 29, 99 & 99 [1&2]) RS-5  
 LIMITS: IL RTE 126 - LEMONT RD.  
 RESURFACING (MAINTENANCE)  
 WILL/DUPAGE COUNTY  
 C-91-004-02

FOR INDEX OF SHEETS, SEE SHEET NO. 2

PROJECT IS LOCATED IN VILLAGES OF BOLINGBROOK, ROMEOVILLE, WOODRIDGE, DARIEN, LEMONT, DOWNERS GROVE, AND LOCKPORT TOWNSHIP.



RESURFACING OMISSIONS:  
 STA. 476+41 - STA. 478+81  
 STA. 683+78 - STA. 685+89

PROJECT BEGINS  
 STA. 194+00 NORTHBOUND  
 STA. 192+06 SOUTHBOUND

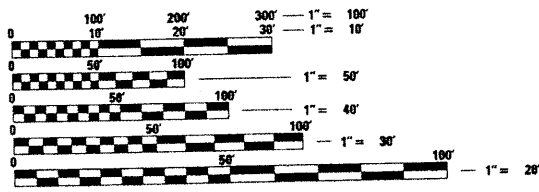
PROJECT ENDS  
 STA. 797+88

TRAFFIC DATA:  
 SPEED LIMIT: 55 MPH  
 1998 ADT: 59,000 NORTHBOUND  
 61,000 SOUTHBOUND

SCALE  
 NO SCALE

STATION EQUATION:  
 STA 487+58.11 BX =  
 STA 604+00.00 AH

GROSS AND NET LENGTH OF PROJECT = 48726 FEET (9.2 MILES) NORTHBOUND  
 = 48920 FEET (9.3 MILES) SOUTHBOUND



FULL SIZE PLANS HAVE BEEN PREPARED USING STANDARD ENGINEERING SCALES. REDUCED SIZED PLANS WILL NOT CONFORM TO STANDARD SCALES. IN MAKING MEASUREMENTS ON REDUCED PLANS, THE ABOVE SCALES MAY BE USED.

J.U.L.I.E.  
 JOINT UTILITY LOCATION INFORMATION FOR EXCAVATION  
 1-800-892-0123

CONTRACT NO. 62366

STATE OF ILLINOIS  
 DEPARTMENT OF TRANSPORTATION  
 DIVISION OF HIGHWAYS

SUBMITTED February 6, 20 02  
 James P. Lee DISTRICT ENGINEER  
 March 22, 20 02  
 Michael Rhine ENGINEER OF DESIGN AND ENVIRONMENT  
 March 22, 20 02  
 James P. Lee DIRECTOR, DIVISION OF HIGHWAYS

PRINTED BY THE AUTHORITY  
 OF THE STATE OF ILLINOIS

DISTRICT ONE - DESIGN  
 PLAN PREPARATION ENGINEER MARK REZNICEK / RON WIEDEMAN (1-847-705-4240)

F.A.I. RTE.	SECTION	COUNTY	TOTAL SHEETS	SHEET NO.
55	02,24,29,39,49,51,62,79,83	WILL/DUPAGE	86	2
STA.		TO STA.		
FED. ROAD DIST. NO. 1		ILLINOIS FED. AID PROJECT		

**GENERAL NOTES**

BEFORE STARTING ANY EXCAVATION, THE CONTRACTOR SHALL CALL "JULIE" AT 800-892-0123 FOR FIELD LOCATIONS OF BURIED ELECTRIC, TELEPHONE AND GAS FACILITIES. (48 HOUR NOTIFICATION IS REQUIRED)

THE CONTRACTOR SHALL COORDINATE CONSTRUCTION ACTIVITIES WITH UTILITY COMPANIES.

THE CONTRACTOR WILL NOT BE ALLOWED TO SET UP A YARD OR FIELD OFFICE ON STATE PROPERTY WITHOUT WRITTEN PERMISSION FROM THE DEPARTMENT.

BARRICADES: THE CONTRACTOR SHALL PROVIDE AND INSTALL TWO (2) WEIGHTED SANDBAGS ON EACH TYPE I OR TYPE II BARRICADE USED- ONE (1) WEIGHTED SAND BAG ACROSS EACH BOTTOM RAIL.

WHEN ARTIFICIAL LIGHTING IS USED IN NIGHT OPERATIONS THE CONTRACTOR SHALL EXERCISE THE UTMOST PRECAUTIONS IN PREVENTING ADVERSE VISIBILITY TO THE MOTORING PUBLIC AND ADJOINING RESIDENTIAL AREAS.

WHEN MILLED PAVEMENT IS OPEN TO TRAFFIC THE MAXIMUM GRADE DIFFERENTIAL BETWEEN PASSES OF THE MILLING MACHINE SHALL NOT EXCEED 40 MM (1 1/2 INCHES WHERE THE SPEED LIMIT IS 80 KM/H (45 MPH) OR LESS AND 25 MM (1 INCH) WHERE THE SPEED LIMIT IS GREATER THAN 80 KM/H (45MPH). WITH WRITTEN APPROVAL FROM THE ENGINEER, A MAXIMUM GRADE DIFFERENTIAL OF 75 MM (3 INCHES) MAY BE ALLOWED IF THE EDGE OF THE MILLING IS SLOPED A MINIMUM 1:3 (V:H).

BUTT JOINTS WILL BE INSTALLED AT THE ENDS OF ALL RESURFACING (WHERE RESURFACING MEETS EXISTING PAVEMENT), IN ACCORDANCE WITH THE "BUTT JOINT AND BITUMINOUS TAPER DETAILS" SHEET INCLUDED IN THE PLANS, UNLESS OTHERWISE SPECIFIED.

CONTACT CORY JUCIUS, TRAFFIC FIELD TECH AT (815)485-6475 72 HOURS PRIOR TO INSTALLATION OF FINAL MARKING.

THE UNIT WEIGHT FOR ALL MIXES IS 112 LBS/SQ YD/IN

ALL WORK DESCRIBED BY SLURRY SEAL WILL BE PAID AS ASPHALTIC EMULSION SLURRY SEAL, TYPE IV

THE CONTRACTOR SHALL CONTACT THE ROADSIDE DEVELOPMENT UNIT AT (847) 705-4171, 72 HOURS BEFORE DELIVERY OF LANDSCAPE ITEMS FOR LAYOUT.

**LIST OF STANDARDS**

- 000001-04 Standard Symbols, Abbreviations And Patterns
- 001006 Decimal of an Inch and of a Foot
- 442101-03 Class B Patches
- 482011-01 Bit. Shoulder Strips/Shoulders With Resurfacing Or Widening & Resurfacing Projects
- 482101 Rumble Strip for PCC or Bituminous Shoulder
- 630001-03 Steel Plate Beam Guardrail
- 630301-01 Shoulder Widening for Type 1 Guardrail Terminals
- 635001 Delineators
- 635006-02 Reflector and Terminal Marker Placement
- 635011-01 Reflector Marker and Mounting Details
- 701101 Off-Road Operations, Multilane, Less Than 4.5 m (15') Away, Speeds ≥ 45 MPH
- 701106 Off-Road Operations, Multilane, More Than 4.5 m (15') Away, For Speeds ≥ 45 MPH
- 701411-02 Lane Closure, Multilane, At Entrance Or Exit Ramp, For Speeds ≥ 45 MPH
- 701426-01 Lane Closure, Multilane, Intermittent or Moving Operation, For Speeds ≥ 45 MPH
- 702001-02 Traffic Control Devices

~~701001-02~~  
~~700001-01~~

**INDEX OF SHEETS**

SHEET NO.	DESCRIPTION
1	COVER SHEET
2	INDEX OF SHEETS, STATE STANDARDS, AND GENERAL NOTES
3-3A	SUMMARY OF QUANTITIES
4-6	TYPICAL SECTIONS
7-11	SUGGESTED STAGING AND TRAFFIC CONTROL
12	DETOUR PLAN
13-46	PROPOSED ROADWAY AND PAVEMENT MARKING PLANS
47-49A	PROPOSED BRIDGE PLANS
50-73	TRAFFIC SURVEILLANCE
74	DETAIL FOR RUMBLE STRIPS
75-86	DISTRICT DETAILS

REVISIONS		ILLINOIS DEPARTMENT OF TRANSPORTATION	
NAME	DATE	INDEX OF SHEETS, LIST OF STATE STANDARDS, AND GENERAL NOTES	
		VERT. SCALE: 1"=40'	DRAWN BY
		HORIZ. SCALE: 1"=40'	CHECKED BY
		DATE 1/30/02	

Rev.

F.A. RTE.	SECTION	COUNTY	TOTAL SHEETS	SHEET NO.
I-55			86	48
STA.	TO STA.			
FED. ROAD DIST. NO.	ILLINOIS	FED. AID PROJECT		

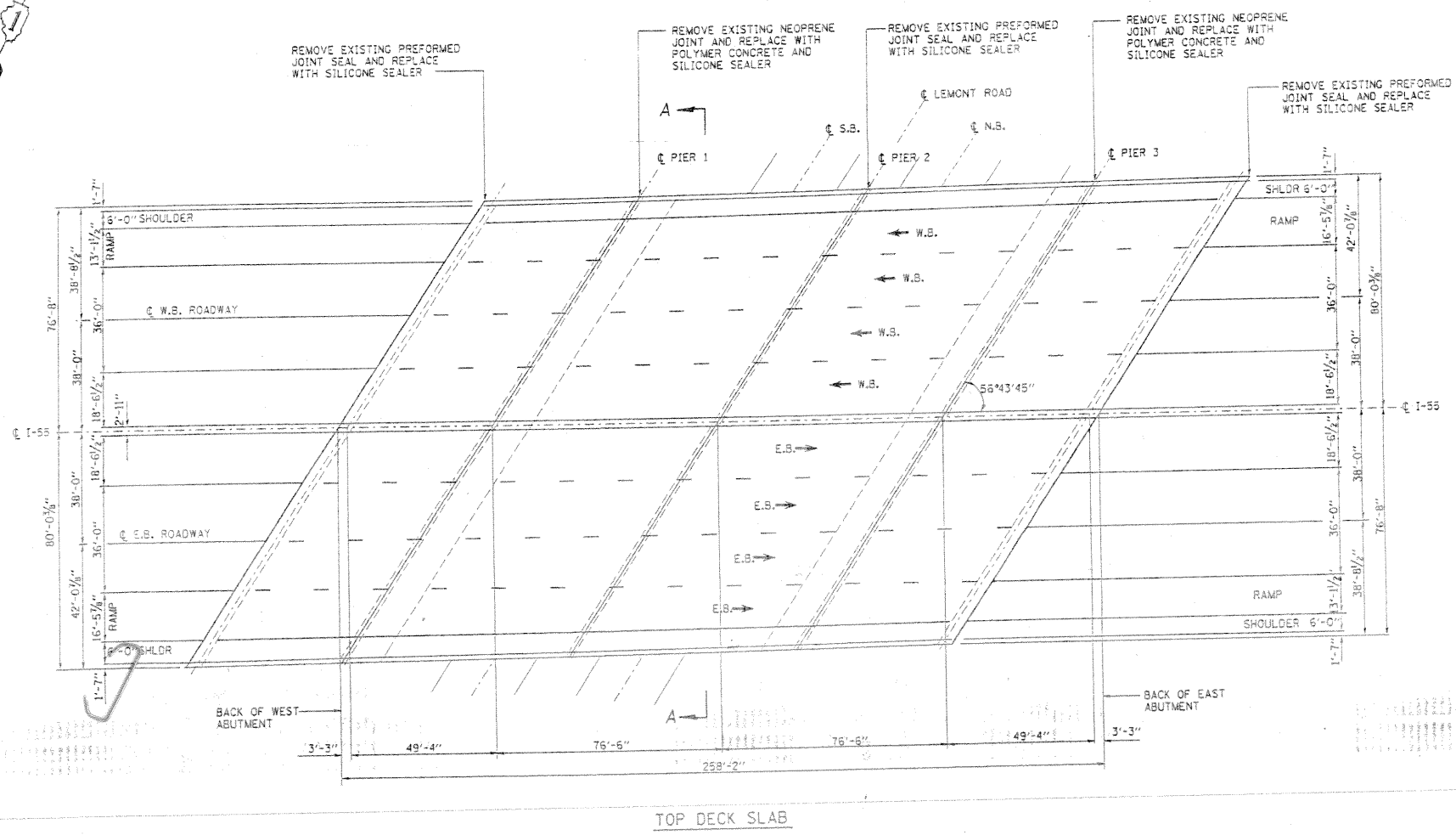
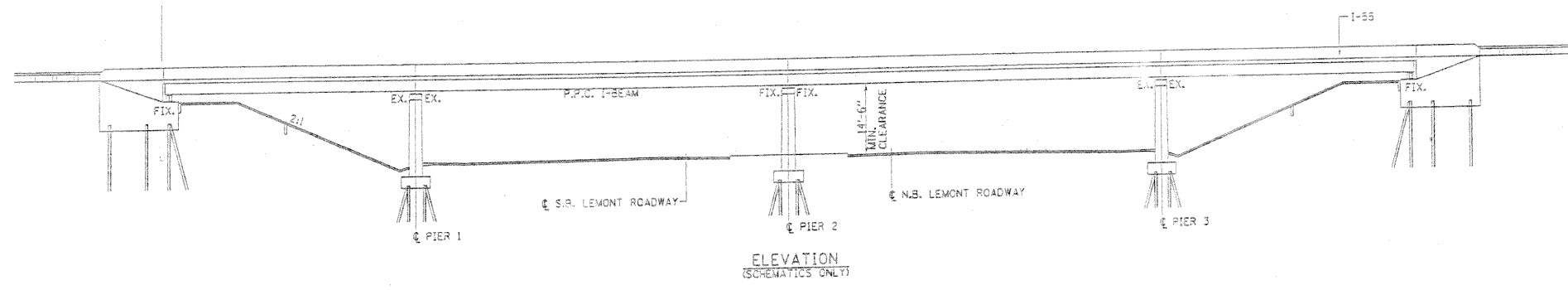
SHEET 3 OF 3 • (22,28,29,39, & 99 (1&2)) RS-8

**GENERAL NOTES**

PLAN DIMENSIONS AND DETAILS RELATIVE TO EXISTING STRUCTURES HAVE BEEN TAKEN FROM EXISTING PLANS AND ARE SUBJECT TO NOMINAL CONSTRUCTION VARIATIONS. IT SHALL BE THE CONTRACTOR'S RESPONSIBILITY TO VERIFY SUCH DIMENSIONS AND DETAILS IN THE FIELD AND MAKE NECESSARY APPROVED ADJUSTMENTS PRIOR TO CONSTRUCTION OR ORDERING OF MATERIALS. SUCH VARIATIONS SHALL NOT BE CAUSE FOR ADDITIONAL COMPENSATION FOR A CHANGE IN THE SCOPE, HOWEVER, THE CONTRACTOR WILL BE PAID FOR THE QUANTITY ACTUALLY FURNISHED AT THE UNIT BID PRICE OF THE WORK.

REMOVAL OF NEOPRENE SHALL BE INCLUDED IN THE COST FOR SILICONE JOINT SEALER.

REMOVAL OF PREFORMED JOINT SEAL SHALL BE INCLUDED IN THE COST OF SILICONE JOINT SEALER.



**BILL OF MATERIALS**

ITEM	UNIT	QUANTITY
POLYMER CONCRETE	CU. FT.	33
SILICONE JOINT SEALER	FOOT	936

REVISIONS	
NAME	DATE

ILLINOIS DEPARTMENT OF TRANSPORTATION

INTERSTATE ROUTE 55  
OVER LEMONT ROAD  
S.N. 022-0001

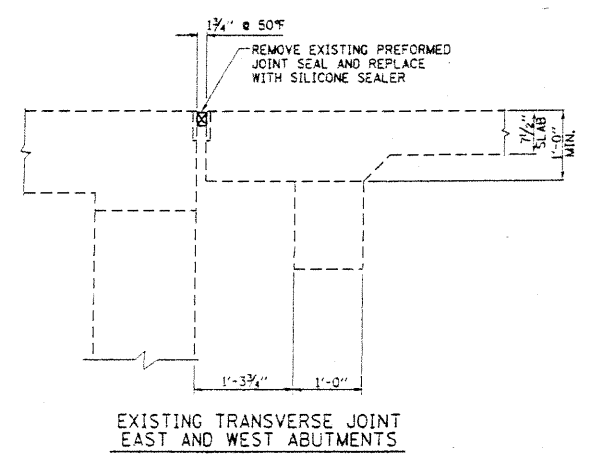
SCALE: VERT. \_\_\_\_\_  
HORIZ. \_\_\_\_\_  
DATE 2/7/02

DRAWN BY MVT  
CHECKED BY RSS

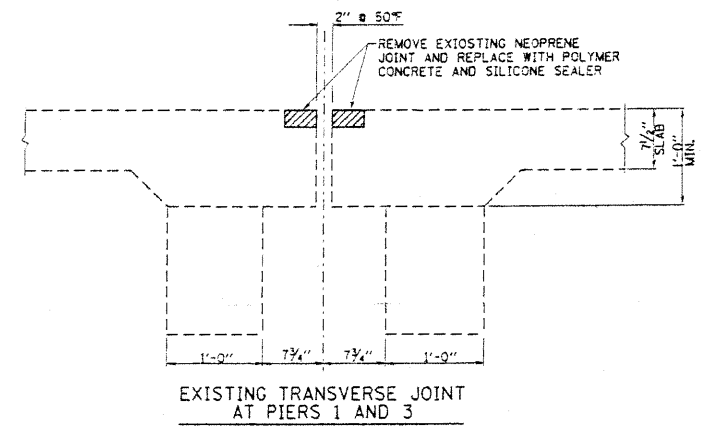
DESIGNED BY: JOHN FORTMANN / RUSS SINHA (847) 705-4209 / ATTENTION MARK V. TINIAKOS (847) 705-4266  
PLAN PREPARATION ENGINEER: JOHN FORTMANN / RUSS SINHA (847) 705-4209 / ATTENTION MARK V. TINIAKOS (847) 705-4266

F.A. RTE. 1	SECTION	COUNTY	TOTAL SHEETS	SHEET NO.
I-55		DUPAGE	86	49
STA.		TO STA.		
FED. ROAD DIST. NO.		ILLINOIS FED. AID PROJECT		

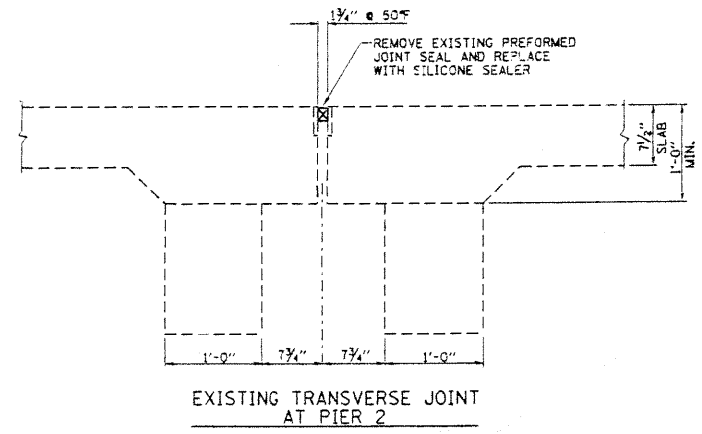
SHEET 5 OF 5 • (22,28,29,99,&99 (1&2)) RS-5



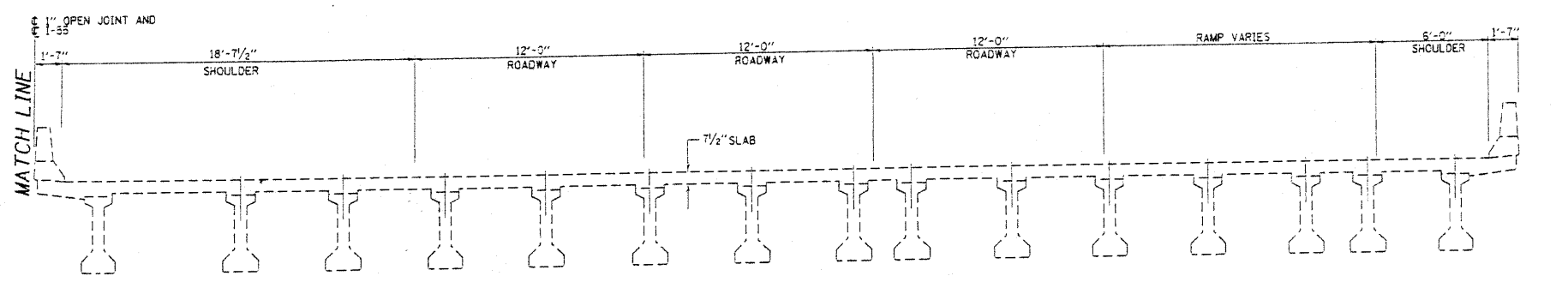
EXISTING TRANSVERSE JOINT EAST AND WEST ABUTMENTS



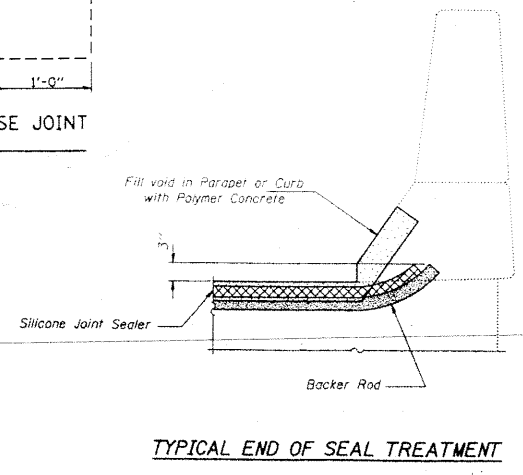
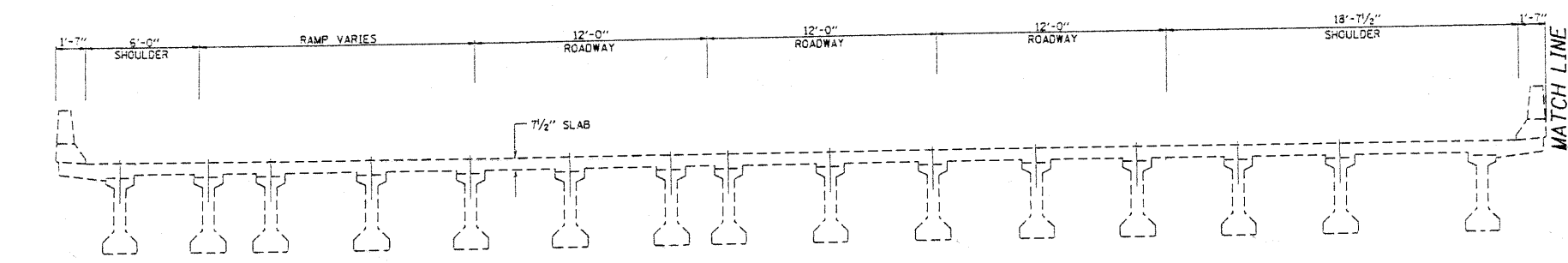
EXISTING TRANSVERSE JOINT AT PIERS 1 AND 3



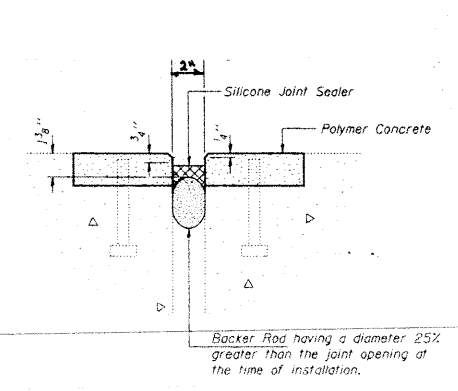
EXISTING TRANSVERSE JOINT AT PIER 2



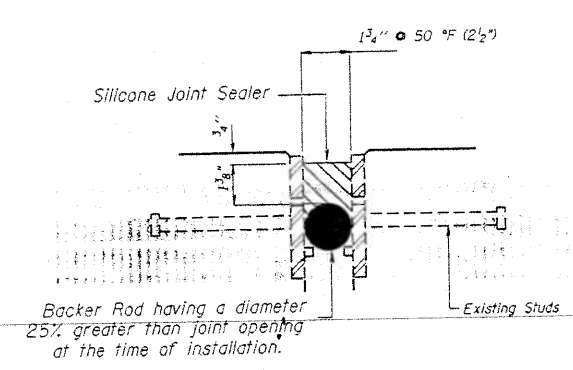
EXISTING TYPICAL CROSS SECTION A-A (LOOKING WEST)



TYPICAL END OF SEAL TREATMENT



SILICONE JOINT SEAL TO REPLACE 2\"/>



SILICONE JOINT SEAL TO REPLACE 2 1/2\"/>

REVISIONS	
NAME	DATE

ILLINOIS DEPARTMENT OF TRANSPORTATION

INTERSTATE ROUTE 55  
OVER LEMONT ROAD  
S.N. 022-0001

SCALE: VERT. \_\_\_\_\_  
HORIZ. \_\_\_\_\_  
DATE 2/7/02

DRAWN BY MVT  
CHECKED BY RSS

PLAN REPAIRMAN ENGINEER JOHN FORTMANN / RUSS SINHA (847) 705-4209 / ATTENTION MARK V. TINIAKOS (847) 705-4266