

CODE NO.	ITEM	UNIT	TOTAL QUANTITY	CONSTRUCTION CODE					
				6-69350-0000	6-69350-0200	6-69350-0100	6-69350-0100	6-69350-0100	6-69350-0100
				I-72/Ramps	IL 100				
				ROADWAY	ROADWAY	BRIDGE	BRIDGE	BRIDGE	BRIDGE
				0005	0005	0013	0013	0013	0013
				RURAL	RURAL	086-0031	086-0032	086-0037	086-0038
* X7830072	GROOVING FOR RECESSED PAVEMENT MARKING 6"	FOOT	160174	140524	19650				
* X7830076	GROOVING FOR RECESSED PAVEMENT MARKING 9"	FOOT	343	343					
* X7830078	GROOVING FOR RECESSED PAVEMENT MARKING 13"	FOOT	102	102					
* X7830090	GROOVING FOR RECESSED PAVEMENT MARKING 25"	FOOT	83	83					
Z0001899	JACK AND REMOVE EXISTING BEARINGS	EACH	24			12	12		
Z0007126	HANDRAIL REMOVAL	FOOT	18					9	9
Z0015802	PLUG EXISTING DECK DRAINS	EACH	4			2	2		
Z0016702	DETOUR SIGNING	L SUM	1			1			
Z0033700	LONGITUDINAL JOINT SEALANT	FOOT	134,576	115,974	18602				
Ø Z0076600	TRAINEES	hour	2500	2500					
Z0034105	MATERIAL TRANSFER DEVICE	TON	63407	60673	2734				
Ø Z0076604	TRAINEES TRAINING PROGRAM GRADUATE	hour	2500	2500					
* Z0054515	ROCK FILL - EMBANKMENT	TON	214			180	34		

* SPECIALTY ITEM

Ø 0042

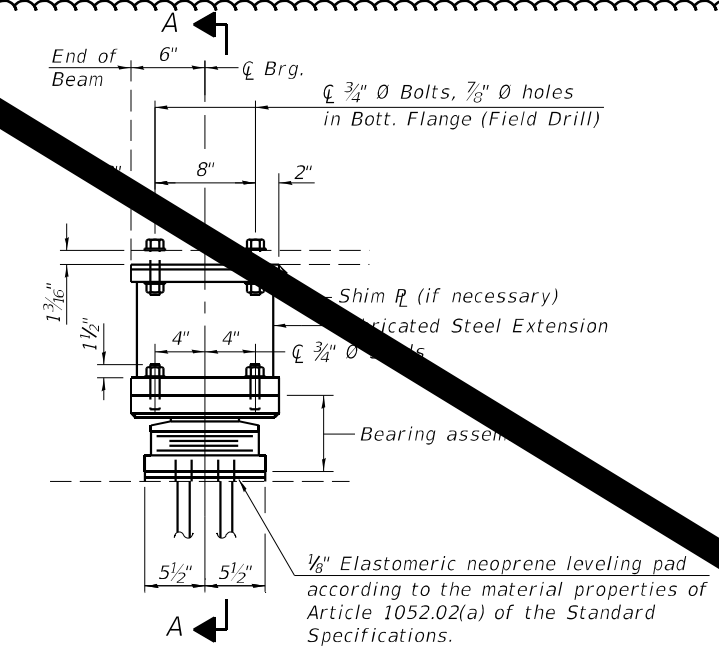
△ REVISED 5-27-2021

REV. - MS

MODEL: Default
FILE NAME: P:\323-102-01 172 Resurfacing\01 IDOT\CD 5\Sheet\0672823.sht C:\0_S00_008.dwg

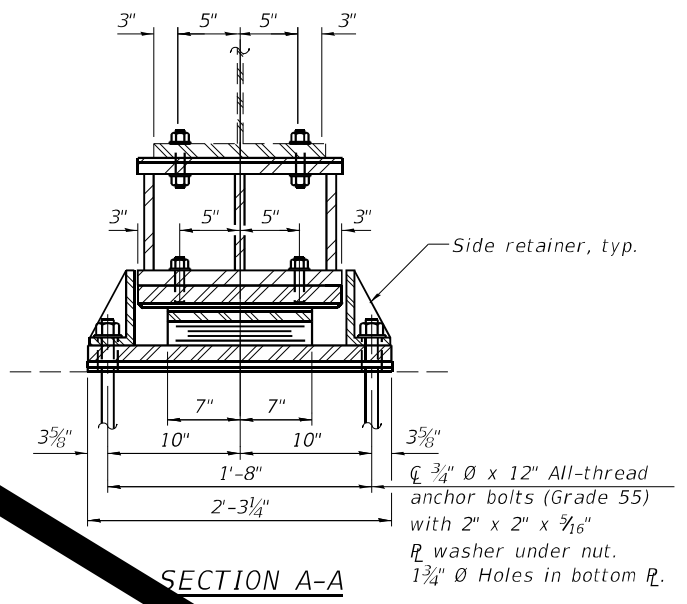
	USER NAME = gdc	DESIGNED - MMS	REVISED -	STATE OF ILLINOIS DEPARTMENT OF TRANSPORTATION	SUMMARY OF QUANTITIES I-72 RESURFACE				F.AJ RTE.	SECTION	COUNTY	TOTAL SHEETS	SHEET NO.
	PLOT SCALE = 1:2	DRAWN - GDC	REVISED -		72	(86-9) RS, PP, BRR, SLP	SCOTT	92	10				
PLOT DATE = 3/30/2021	CHECKED - BCD	REVISED -			SCALE: SHEET 6 OF 6 SHEETS STA. TO STA.				CONTRACT NO.72823				
	DATE -	REVISED -							ILLINOIS FED. AID PROJECT				

1

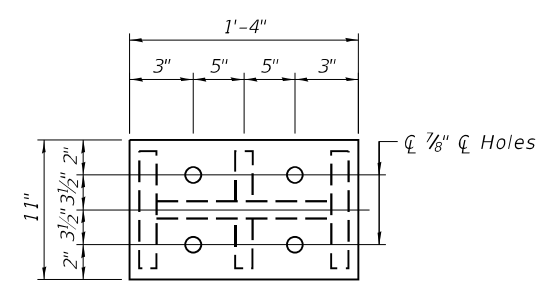


ELEVATION AT W. ABUTS.

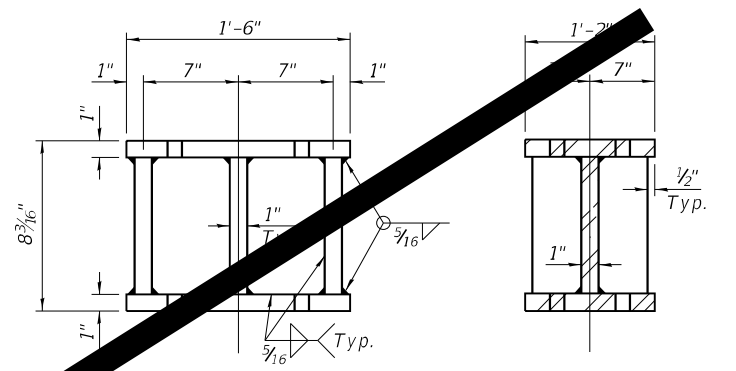
TYPE II ELASTOMERIC EXP. BRG.



SECTION A-A



PLAN - TOP & BOTTOM



ELEVATION

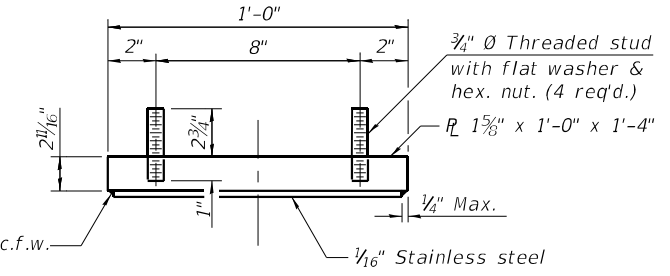
SECTION

FABRICATED STEEL EXTENSION (12 Required)

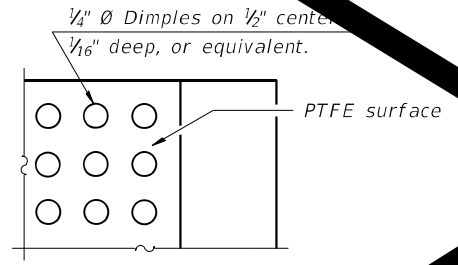
BEAM REACTIONS

R ψ	(k)	57
R $\frac{1}{2}$	(k)	43
Imp.	(k)	9
R _{Total}	(k)	109

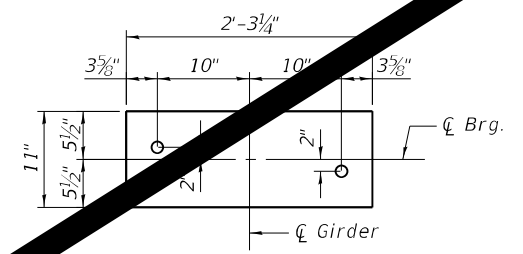
Notes:
 Side retainers and leveling pad required for the elastomeric bearing assembly shall be included in the cost of Elastomeric Bearing Assembly, Type I.
 The $\frac{1}{8}$ " PTFE sheet shall be bonded directly to the top steel plate with a two-component, medium viscosity epoxy resin, conforming to the requirements of the Federal Specification MMM-A-134, Type I. The bond agent shall be applied on the full area of the contact surfaces.
 Bonding of $\frac{1}{8}$ " PTFE sheet during vulcanizing process will be permitted provided the process and method of adjusting assembly height is approved by the Engineer.
 Anchor bolts shall be ASTM F1554 all-thread (or an Engineer-approved alternate material) of the grade(s) and diameter(s) specified. The corresponding specified grade of AASHTO M314 anchor bolts may be used in lieu of ASTM F1554.
 Drilled and set anchor bolts shall be installed according to Article 521.06 of the Standard Specifications.
 Two $\frac{1}{8}$ in. adjusting shims shall be provided for each bearing in addition to all other plates or shims and placed as shown on bearing details.
 Drilling holes in flange, steel extensions and connection bolts included with Furnishing and Erecting Structural Steel.
 Diaphragm removal and reinstallation may be required to facilitate drilling holes. Cost included with Furnishing and Erecting Structural Steel.
 Minimum jack capacity = 45 tons.
 New structural steel and bearing assemblies shall be hot-dip galvanized. See special provision for "Hot Dip Galvanizing for Structural Steel".



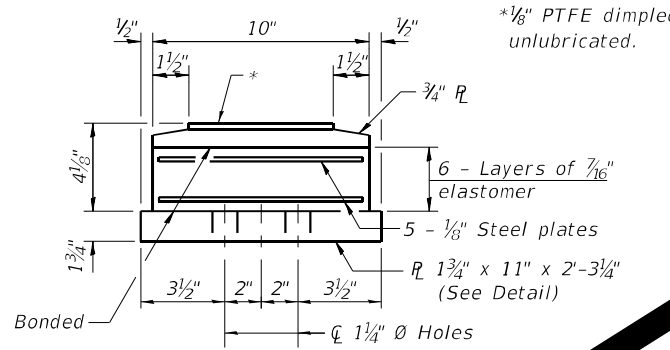
TOP BEARING ASSEMBLY



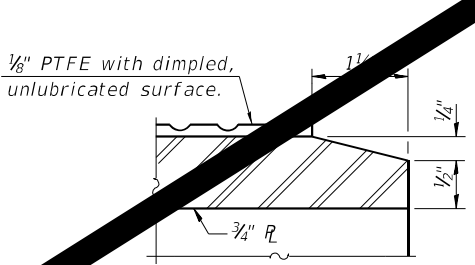
PLAN-PTFE SURFACE



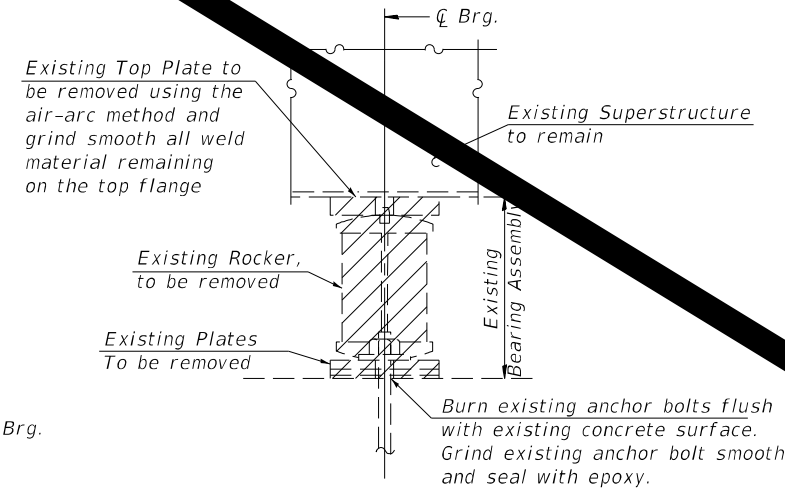
BOTTOM BRG. PLATE DETAIL



BOTTOM BEARING ASSEMBLY

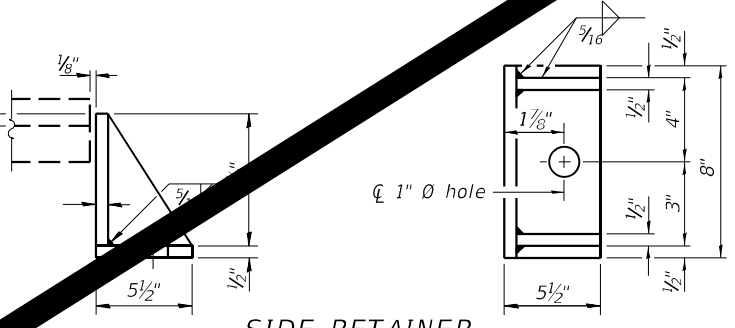


SECTION THRU PTFE



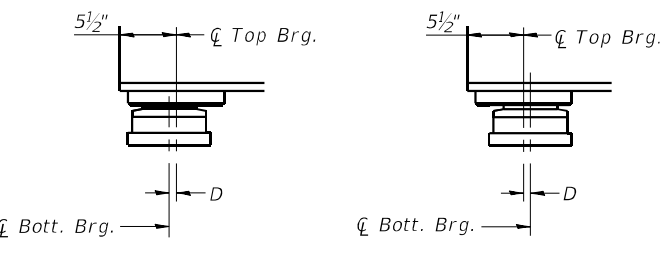
EXISTING BEARING REMOVAL

Work is included with the cost for Jack and Remove Existing Bearings



SIDE RETAINER

Equivalent rolled angle with stiffeners will be allowed in lieu of welded plates.



BELOW 50°F. ABOVE 50°F.
 D = $\frac{1}{8}$ " per each 100' of expansion for every 15° temp. change from the normal temp. of 50°F.

EXPANSION BEARING ORIENTATION

The above diagrams are for informational purposes only to show the amount of expected offset "D" for the current temperature in the field.

REVISD 5-27-2021

BILL OF MATERIAL

Item	Unit	Total
Elastomeric Bearing Assembly, Type II	Each	12
Anchor Bolts, $\frac{3}{4}$ "	Each	24
Furnishing and Erecting Structural Steel		2335
Jack and Remove Existing Bearings	Each	12

MODEL: SMODELNAMES
 FILE NAME: \$FILES



2644.1
 FILENAME = \$FILES
 PLOT DATE = \$DATES

DESIGNED AAN
 CHECKED MDC
 DRAWN SJS
 CHECKED MDC

REVISED
 REVISED
 REVISED
 REVISED

STATE OF ILLINOIS
 DEPARTMENT OF TRANSPORTATION

BEARING DETAILS WEST ABUTMENTS
 STRUCTURE NO. 086-0031 (EB) & 0032 (WB)

SHEET 5 OF 5 SHEETS

ART. NO.	SECTION	COUNTY	TOTAL SHEETS	SHEET NO.
72	(86-9) RS, PP, BRR, SLP	SCOTT	92	53

CONTRACT NO. 72823
 ILLINOIS FED. AID PROJECT

1

BAR TABLE - 4 PARAPETS (S.N. 086-0037, 0038)

Bar	No.	Size	Length	Sh
h(E)	16	#4	5'-2"	
s(E)	20	#4	3'-1"	
s1(E)	4	#4	1'	
d*(E)	20	#4	2'-5"	

BILL OF MATERIALS - 4 PARAPETS (S.N. 086-0037, 0038)

Item	Unit	Quantity
Concrete Structures	Cu. Yd.	0.9
Reinforcement Bars, Epoxy Coated	Lbs.	150
Handrail Removal	Foot	18'-0"

GENERAL NOTES

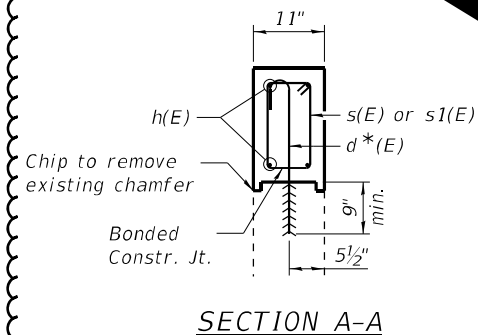
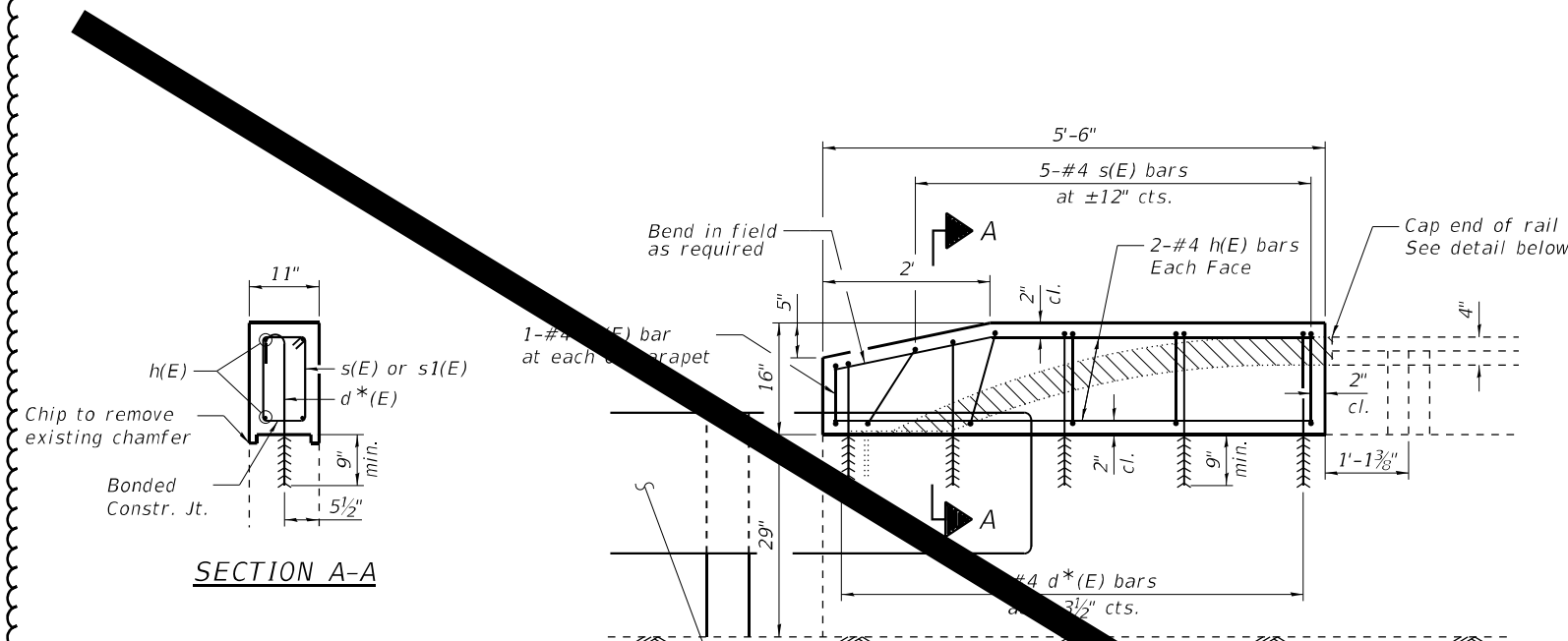
The parapet extension details shown on this sheet shall only be constructed on the approach ends of each structure.

Reinforcement bars designated (E) shall be epoxy coated.

Hatched areas indicated limits of Handrail Removal. The existing handrail shall be cut short of the new concrete by 1" to allow for placement of forms.

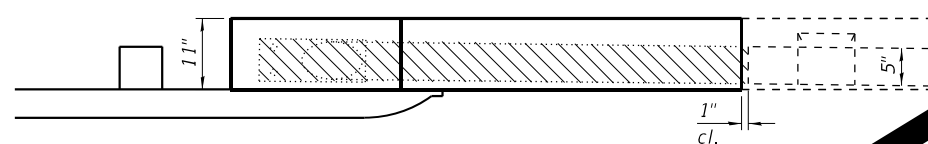
Bars designated d (E) shall be drilled and grouted into the existing concrete parapet. Epoxy grouting shall be done in accordance with Section 584 of the Standard Specifications. the cost of the epoxy grouting and drilling shall be included in the cost of Reinforcement Bars, Epoxy Coated.

Plan dimensions and details relative to the existing structure have been taken from existing plans and are subject to nominal construction variations. It shall be the contractor's responsibility to verify such dimensions and details in the field and make necessary approved adjustments prior to construction or ordering of materials. Such variations shall not be cause for additional compensation for a change in the scope of work. However, the contractor will be paid for the quantity actually furnished at the unit price for the work.



Proposed Traffic Barrier Terminal, Type 6
install per Highway Standard

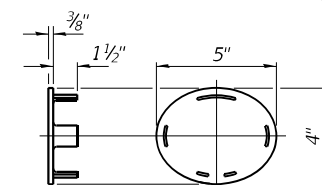
ELEVATION



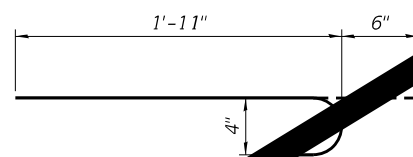
PLAN

PARAPET EXTENSION DETAILS

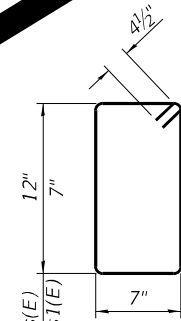
(East Abutment - West Bound Structure)
(West Abutment - East Bound Structure)



**CAST END CAP
DRIVE FIT TYPE
(Cost included with Handrail Removal)**

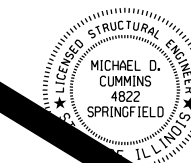


BAR d(E)



BAR s(E) or s1(E)

1 REVISD 5-27-2021



(Expires 11/30/22)

MODEL: Default
FILE NAME: 0037-0038-72823-00-ParapetEx.dgn



KOB =	2644.1
FILE NAME =	0037-0038-72823-00-ParapetEx.dgn
PLOT DATE =	3/11/2021

DESIGNED	AAN	REVISED	
CHECKED	MDC	REVISED	
DRAWN	SJS	REVISED	
CHECKED	MDC	REVISED	

STATE OF ILLINOIS
DEPARTMENT OF TRANSPORTATION

PARAPET EXTENSION DETAILS
STRUCTURE NO. 086-0037 & 0038

SHEET OF SHEETS

F.A.I. RTE.	SECTION	COUNTY	TOTAL SHEETS	SHEET NO.
72	(86-9) RS, PP, BRR, SLP	SCOTT	92	54

CONTRACT NO. 72823

ILLINOIS FED. AID PROJECT