

F.A. RTE.	SECTION	COUNTY	TOTAL SHEETS	SHEET NO.
	ARGYLE LAKE 2021	MCDONOUGH ILLINOIS	20*	1
CONTRACT NO. 46929				

* 20 + 1 = 21 TOTAL SHEETS

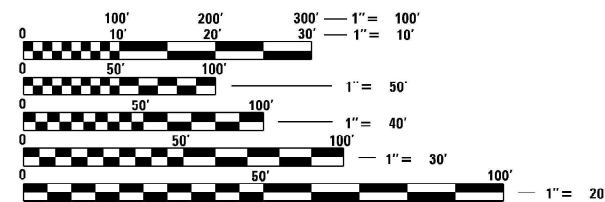
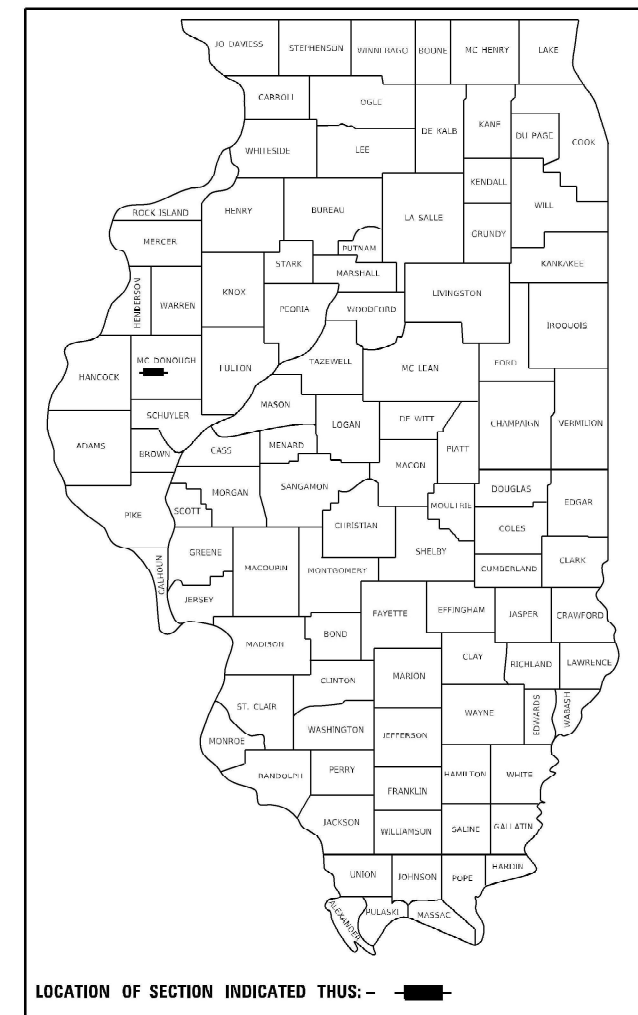
D-4

FOR INDEX OF SHEETS AND
HIGHWAY STANDARDS, SEE SHEET NO. 2

STATE OF ILLINOIS
DEPARTMENT OF TRANSPORTATION
DIVISION OF HIGHWAYS

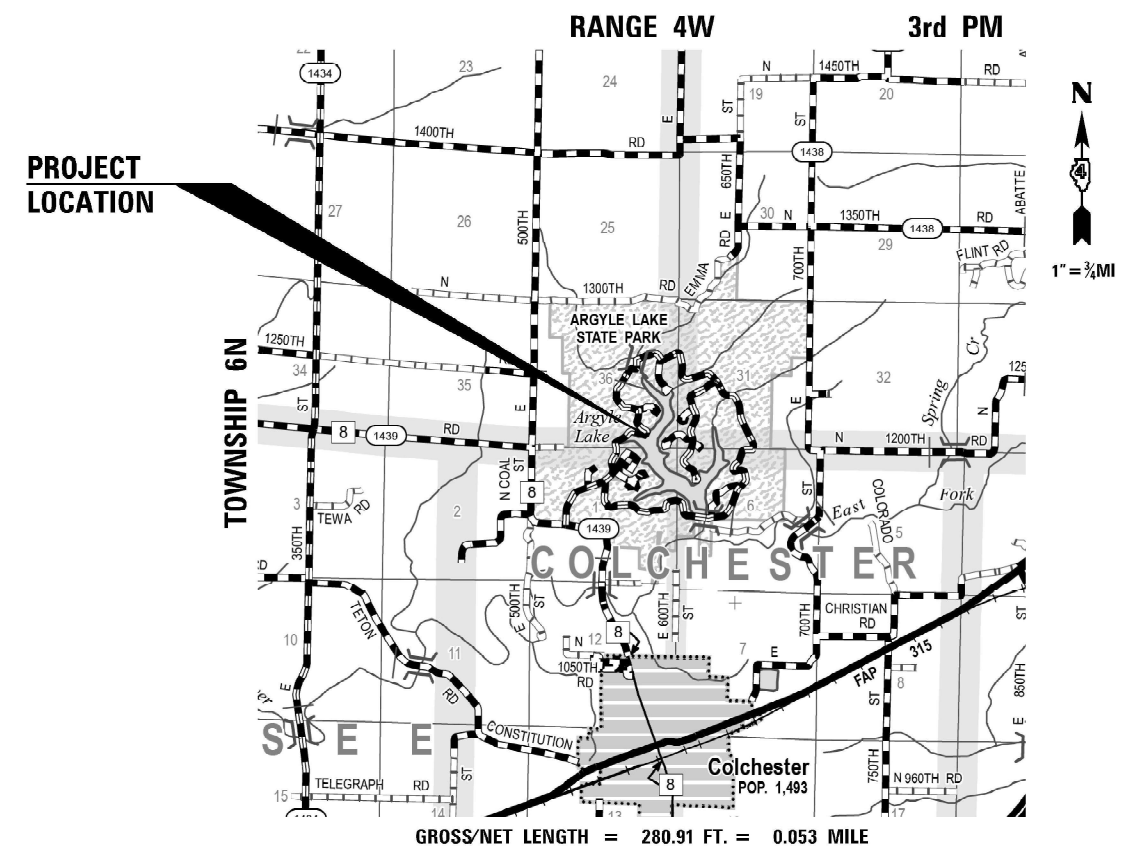
**PROPOSED
HIGHWAY PLANS**

IDOT/INDR STATEWIDE
ARGYLE LAKE STATE PARK
SECTION ARGYLE LAKE – 2021
SLOPE FAILURE AND PAVEMENT REPAIRS
MCDONOUGH COUNTY
ROUTE: INTERNAL PARK ROADS
IDNR FILE NO. 1-20-039
C-30-007-21

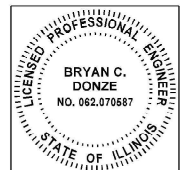


FULL SIZE PLANS HAVE BEEN PREPARED USING STANDARD ENGINEERING SCALES. REDUCED SIZED PLANS WILL NOT CONFORM TO STANDARD SCALES. IN MAKING MEASUREMENTS ON REDUCED PLANS, THE ABOVE SCALES MAY BE USED.

J.U.L.I.E.
JOINT UTILITY LOCATION INFORMATION FOR EXCAVATORS
1-800-892-0123
OR 811



GROSS/NET LENGTH = 280.91 FT. = 0.053 MILE



April 1 20 21
BRYAN C. DONZE
ILLINOIS REG. PROFESSIONAL ENGINEER NO. 062-070587
EXPIRATION DATE 11-30-2021

Kaskaskia
Engineering Group, LLC
PROFESSIONAL REGISTRATIONS
Illinois Professional Design Firm
Professional Engineering Group
477 South Third Street
Suite 280
Geneva, Illinois 60134
630.332.9157 phone
www.kaskaskiaeng.com
LICENSE NO.
154.004773
20-5080586

CONTRACT NO. 46929

STATE OF ILLINOIS
DEPARTMENT OF TRANSPORTATION
SUBMITTED MAY 7, 21
[Signature]
REGIONAL ENGINEER
May 7, 2021
[Signature]
ENGINEER OF DESIGN AND ENVIRONMENT
May 7, 2021
[Signature]
DIRECTOR OF HIGHWAYS PROJECT IMPLEMENTATION

**PRINTED BY THE AUTHORITY
OF THE STATE OF ILLINOIS**

GENERAL NOTES

1. THE CONTRACTOR IS RESPONSIBLE FOR COORDINATING WITH IDNR STAFF AND CONTACTING J.U.L.I.E. PRIOR TO ANY EXCAVATION TO HAVE ALL PUBLIC AND PRIVATE UTILITIES LOCATED, MARKED, AND AVOIDED.
2. THE CONTRACTOR SHALL BE RESPONSIBLE FOR PROTECTING UTILITY PROPERTY FROM CONSTRUCTION OPERATIONS AS OUTLINED IN ARTICLE 107.26 OF THE STANDARD SPECIFICATIONS, LATEST EDITION. THE J.U.L.I.E. CONTACT NUMBER IS (800) 892-0123. A MINIMUM OF 48 HOURS ADVANCE NOTICE IS REQUIRED.
3. ANY REFERENCE TO IDOT STANDARDS THROUGHOUT THE PLANS SHALL BE INTERPRETED TO BE THE LATEST EDITION.
4. ALL DETAILS IN THE PLANS SHALL GOVERN CONSTRUCTION OF THIS PROJECT, AND IN CASE OF CONFLICT WITH ANY STANDARD DRAWINGS INCLUDED. THE SAID DETAILS SHALL TAKE PRECEDENCE AND GOVERN.
5. THE BASELINE SHOWN IN THE PLANS IS A "BEST FIT" ALIGNMENT OF THE CENTER OF THE EXISTING ROADWAY FOR THE PURPOSE OF STATIONING AND DETERMINING OFFSETS. IN MOST CASES IT DOES NOT REPRESENT THE PHYSICAL CENTERLINE OF THE ROADWAY.
6. THE CONTRACTOR SHALL VERIFY ALL DIMENSIONS AND CONDITIONS IN THE FIELD PRIOR TO CONSTRUCTION AND ORDERING MATERIALS.
7. THE PROPOSED PAVEMENT MARKINGS SHALL MATCH THE LOCATIONS OF THE EXISTING PAVEMENT MARKINGS AS DETAILED IN THE PLANS OR AS DIRECTED BY THE ENGINEER.
8. THE CONTRACTOR SHALL CONFINE ALL OPERATIONS TO THE CONSTRUCTION LIMITS LINE SHOWN ON THE PLANS. ANY AREA DISTURBED BEYOND THESE LIMITS SHALL BE RESTORED TO ITS ORIGINAL CONDITIONS AT THE CONTRACTORS EXPENSE.
9. THE CONTRACTOR SHALL COORDINATE WITH IDNR STAFF PRIOR TO PERFORMING ANY WORK IN THE WATER SO THAT THE WATER LEVEL CAN BE LOWERED AND THE WORK AREA DRIED TO THE SATISFACTION OF IDNR STAFF AND THE ENGINEER. THE NORMAL WATER LEVEL IS 609.60 AND IT IS ESTIMATED THE WATER LEVEL WILL NEED TO BE LOWERED A MAXIMUM OF 5 FEET.
10. THE CONTRACTOR SHALL FERTILIZE, SEED, AND MULCH ALL EARTH SURFACES DISTURBED BY CONSTRUCTION. FERTILIZER, SEEDING, AND MULCH WITHIN THE CONSTRUCTION LIMITS WILL BE PAID FOR AS PROVIDED IN THE CONTRACT. FERTILIZER, SEEDING, AND MULCH OUTSIDE OF THESE LIMITS WILL NOT BE MEASURED FOR PAYMENT.
11. THE DEPARTMENT RESERVES THE RIGHT TO AT ANY TIME, ADD ADDITIONAL TRAFFIC CONTROL SYSTEMS OR DEVICES WITHIN THE ACTIVE CONTRACT LIMITS. BY MEANS OF AN ADDITIONAL CONTRACT. ALL TERMS OF ARTICLE 108.08 OF THE STANDARD SPECIFICATIONS SHALL BE FOLLOWED BY EACH CONTRACTOR.
12. TRAFFIC CONTROL ITEMS SHALL BE PAID FOR BY LUMP SUM TRAFFIC CONTROL AND PROTECTION, (SPECIAL). SEE HIGHWAY STANDARDS AND SPECIAL PROVISIONS FOR ADDITIONAL DETAILS. ALL SIGNS AND TEMPORARY PAVEMENT MARKINGS SHALL BE INCLUDED IN THE PAY ITEM.
13. EXISTING TREES AND TREE CANOPY SHALL BE PROTECTED/CLEARED ACCORDING TO ARTICLE 201 OF THE STANDARD SPECIFICATIONS. ANY BRANCHES BROKEN OR DAMAGED DURING CLEARING OR CONSTRUCTION OPERATIONS SHALL BE PRUNED ACCORDING TO ANSI A300 OR AT THE DIRECTION OF IDNR STAFF. PRUNING SHALL BE INCLUDED IN THE COST OF OTHER ITEMS. TREE TRUNK PROTECTION SHALL BE MEASURED AND PAID BY EACH.
14. THE CONTRACTOR WILL KEEP ALL PERMANENT PAVEMENT SURFACES CLEAN OF DIRT OR CONSTRUCTION DEBRIS. THE PAVEMENT SHALL BE CLEANED AT THE END OF EACH DAY'S OPERATION OR MORE FREQUENTLY AS REQUIRED BY THE ENGINEER IF THE DEBRIS IS DEEMED TO BE A HAZARD TO THE MOTORING PUBLIC.

HOT-MIX ASPHALT MIXTURE REQUIREMENTS

LOCATION(S):	ROADWAY	ROADWAY
MIXTURE USE(S):	SURFACE	BINDER
PG:	PG 64-22	PG 64-22
DESIGN AIR VOIDS:	4.0% @ N50	4.0% @ N50
MIXTURE COMPOSITION	IL 9.5	IL 9.5
FRICTION AGGREGATE:	C	
MIXTURE WEIGHT:	QC/QA	QC/QA

THE UNIT WEIGHT USED TO CALCULATE ALL HMA SURFACE MIXTURE QUANTITIES IS 112 LB/SQ YD/IN.

INDEX OF SHEETS

- 1 COVER SHEET
- 2 GENERAL NOTES, INDEX OF SHEETS & HIGHWAY STANDARDS
- 3-5 SUMMARY OF QUANTITIES
- 6 TYPICAL SECTIONS
- 7 EARTHWORK SCHEDULE & NOTES
- 8 SCHEDULE OF QUANTITIES
- 9 ALIGNMENT, TIES & BENCHMARKS
- 10 SITE OVERVIEW & ROAD CLOSURE
- 11 REMOVAL & SITE PLAN
- 12 EROSION CONTROL & RESTORATION PLAN AND PAVEMENT MARKING & SIGNING PLAN
- 12A SLOPE STEPS DETAIL
- 13 HP PILE LAYOUT PLAN
- 14 HP PILE LAYOUT TABLES
- 15 HP PILE DETAILS
- 16-17 SOILING BORING LOGS
- 18-20 CROSS SECTIONS

HIGHWAY STANDARDS

- 000001-08 STANDARD SYMBOLS, ABBREVIATIONS AND PATTERNS
- 001006 DECIMAL OF AN INCH AND OF A FOOT
- 280001-07 TEMPORARY EROSION CONTROL SYSTEMS
- 701001-02 OFF-ROAD OPERATIONS, 2L, 2W, MORE THAN 15' (4.5m) AWAY
- 701006-05 OFF-ROAD OPERATIONS, 2L, 2W, 15' (4.5m) TO 24"(600mm) FROM PAVEMENT EDGE
- 701901-08 TRAFFIC CONTROL DEVICES
- 720001-01 SIGN PANEL MOUNTING DETAILS
- 720006-04 SIGN PANEL ERECTION DETAILS
- 780001-05 TYPICAL PAVEMENT MARKINGS
- BLR 21-9 TYPICAL APPLICATION OF TRAFFIC CONTROL DEVICES FOR CONSTRUCTION ON RURAL LOCAL HIGHWAYS

MODEL: Default
FILE NAME: P:\19-1009\11_Arroyo Lake State Park\10_IDOT\CAD_Sheet\0466929-shr-generates.dgn

77 South Third Street
Suite 200
Galesburg, Illinois 62404
618.333.8187 phone
www.kaskaskiaeng.com
Illinois Professional Engineer
No. 0436713
31-588530

USER NAME = ndp	DESIGNED -	REVISED -
	DRAWN - NDP	REVISED -
PLOT SCALE = 2.0000 ' / in.	CHECKED - BCD	REVISED -
PLOT DATE = 4/22/2021	DATE - 4/1/21	REVISED -

**STATE OF ILLINOIS
DEPARTMENT OF TRANSPORTATION**

**ARGYLE LAKE STATE PARK – SLOPE FAILURE REPAIR
GENERAL NOTES, INDEX OF SHEETS & HIGHWAY STANDARDS**

F.A. RTÉ.	SECTION	COUNTY	TOTAL SHEETS	SHEET NO.
---	ARGYLE LAKE 2021	MCDONOUGH	20	2
CONTRACT NO. 46929				
SCALE:		SHEET 1 OF 1 SHEETS	STA.	TO STA.
ILLINOIS FED. AID PROJECT				

SUMMARY OF QUANTITIES

CODE NO.	ITEM	UNIT	TOTAL QUANTITY	CONST. CODE
				100% STATE
				ROADWAY
				0006
				RURAL
* 20100110	TREE REMOVAL (6 TO 15 UNITS DIAMETER)	UNIT	16	16
* 20101100	TREE TRUNK PROTECTION	EACH	6	6
* 20101200	TREE ROOT PRUNING	EACH	2	2
20200100	EARTH EXCAVATION	CU YD	177	177
* 20201200	REMOVAL AND DISPOSAL OF UNSUITABLE MATERIAL	CU YD	150	150
20400800	FURNISHED EXCAVATION	CU YD	82	82
21001000	GEOTECHNICAL FABRIC FOR GROUND STABILIZATION	SQ YD	300	300
21101505	TOPSOIL EXCAVATION AND PLACEMENT	CU YD	305	305
* 25000115	SEEDING, CLASS 1B	ACRE	0.4	0.4
* 25000400	NITROGEN FERTILIZER NUTRIENT	POUND	36	36
* 25000500	PHOSPHORUS FERTILIZER NUTRIENT	POUND	36	36
* 25000600	POTASSIUM FERTILIZER NUTRIENT	POUND	36	36
* 25100630	EROSION CONTROL BLANKET	SQ YD	1,582	1,582
* 25100635	HEAVY DUTY EROSION CONTROL BLANKET	SQ YD	329	329

*= SPECIALTY ITEM

MODEL: Default FILE NAME: P:\18-1006.11\Argyle Lake State Park\DDOTCAD_Sheets\046629-sh-500-01.dgn



Kaskaskia
Engineering Group, LLC
477 South Third Street
Suite 200
Galesburg, Illinois 62404
618.332.3127 phone
www.kaskaskiaeng.com
Professional Engineering Firm
34-00713
28-108596

USER NAME = ndp	DESIGNED -	REVISED -
PLOT SCALE = 20.0000' / in.	DRAWN = NDP	REVISED -
PLOT DATE = 4/1/2021	CHECKED = BCD	REVISED +
	DATE = 4/1/21	REVISED +

**STATE OF ILLINOIS
DEPARTMENT OF TRANSPORTATION**

**ARGYLE LAKE STATE PARK – SLOPE FAILURE REPAIR
SUMMARY OF QUANTITIES**

SCALE: SHEET 1 OF 3 SHEETS STA. TO STA.

F.A. RTE.	SECTION	COUNTY	TOTAL SHEETS	SHEET NO.
	ARGYLE LAKE 2021	MCDONOUGH	20	3
			CONTRACT NO. 46929	
ILLINOIS FED. AID PROJECT				

REV-SEP

REV. 5/4/21

SUMMARY OF QUANTITIES

CODE NO.	ITEM	UNIT	TOTAL QUANTITY	CONST. CODE
				100% STATE
				ROADWAY
				0006
				RURAL
28000250	TEMPORARY EROSION CONTROL SEEDING	POUND	40	40
28000305	TEMPORARY DITCH CHECKS	FOOT	32	32
28000400	PERIMETER EROSION BARRIER	FOOT	757	757
28000500	INLET AND PIPE PROTECTION	EACH	1	1
30300001	AGGREGATE SUBGRADE IMPROVEMENT	CU YD	150	150
30300112	AGGREGATE SUBGRADE IMPROVEMENT 12"	SQ YD	567	567
40600275	BITUMINOUS MATERIALS (PRIME COAT)	POUND	1,276	1,276
40600290	BITUMINOUS MATERIALS (TACK COAT)	POUND	128	128
40602978	HOT-MIX ASPHALT BINDER COURSE, 1L-9.5, N50	TON	77	77
40604050	HOT-MIX ASPHALT SURFACE COURSE, 1L-9.5, MIX "C", N50	TON	47	47
44000100	PAVEMENT REMOVAL	SQ YD	534	534
51201400	FURNISHING STEEL PILES HP10X42	FOOT	1,776	1,776
67000500	ENGINEER'S FIELD OFFICE, TYPE B	CAL MO	6	6
67100100	MOBILIZATION	L SUM	1	1

*= SPECIALTY ITEM

MODEL: Default
 FILE NAME: P:\18-1006.11 /Argyle Lake State Park\100 IDOT\CAD_Sheets\0466929-Sub-500-02.dgn



Kaskaskia
 Engineering Group, LLC
 477 South Third Street
 Suite 200
 Geneva, Illinois 60134
 630.332.3127 phone
 www.kaskaskiaeng.com
 LICENSE NO. 042-072-0720
 Illinois Professional Design Firm
 04-00753
 20-108596

USER NAME = ndp	DESIGNED -	REVISED -
	DRAWN = NDP	REVISED -
PLOT SCALE = 20.0000' / in.	CHECKED = BCD	REVISED +
PLOT DATE = 4/1/2021	DATE = 4/1/21	REVISED +

DESIGNED -	REVISED -
DRAWN = NDP	REVISED -
CHECKED = BCD	REVISED +
DATE = 4/1/21	REVISED +

STATE OF ILLINOIS
DEPARTMENT OF TRANSPORTATION

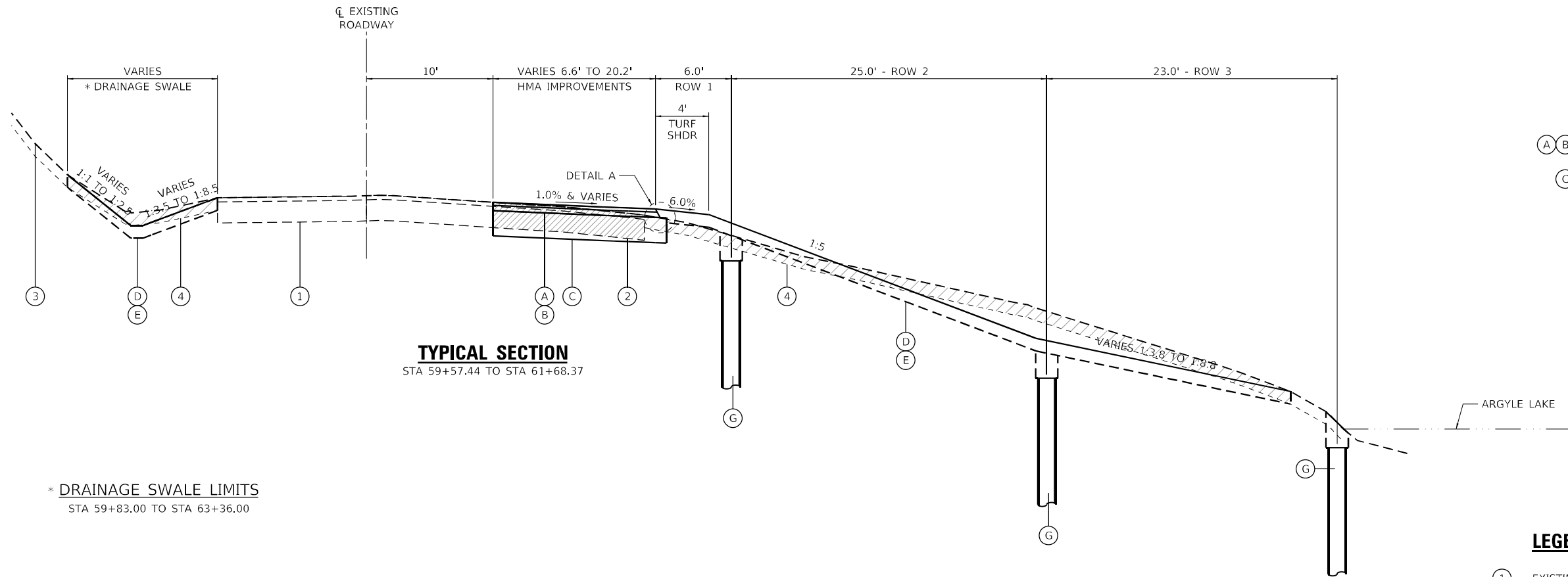
ARGYLE LAKE STATE PARK – SLOPE FAILURE REPAIR
SUMMARY OF QUANTITIES

SCALE: SHEET 2 OF 3 SHEETS STA. TO STA.

F.A. RTE.	SECTION	COUNTY	TOTAL SHEETS	SHEET NO.
	ARGYLE LAKE 2021	MCDONOUGH	20	4
CONTRACT NO. 46929				
ILLINOIS FED. AID PROJECT				

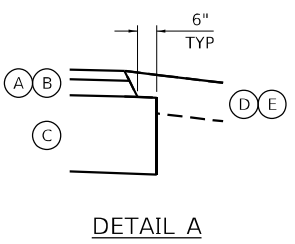
REV-SEP

REV. 5/4/21



TYPICAL SECTION
STA 59+57.44 TO STA 61+68.37

* DRAINAGE SWALE LIMITS
STA 59+83.00 TO STA 63+36.00

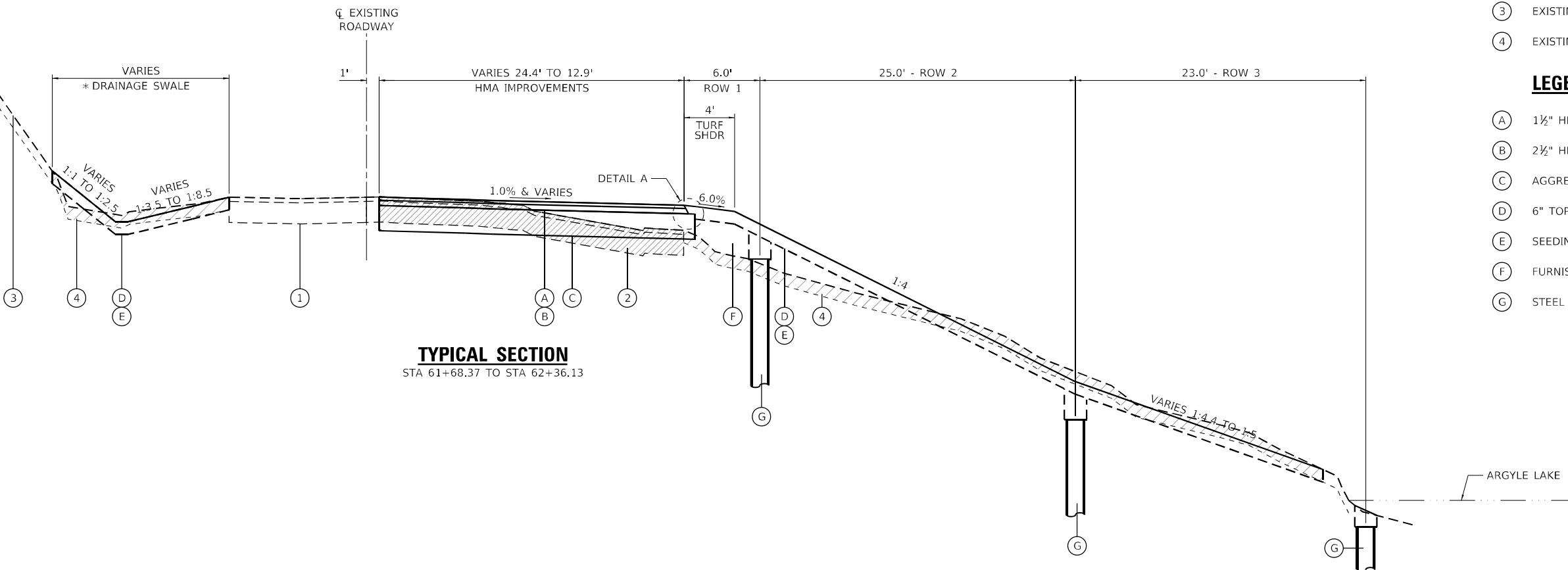


LEGEND, EXISTING

- ① EXISTING PAVEMENT
±2" HMA SURFACE COURSE *
±8" AGGREGATE BASE COURSE *
- ② EXISTING PAVEMENT REMOVAL (44000100)
* INCLUDES HMA SURFACE & AGG BASE COURSES
- ③ EXISTING GROUND
- ④ EXISTING TOPSOIL EXCAVATION (21101505)

LEGEND, PROPOSED

- Ⓐ 1½" HMA SURFACE COURSE, IL-9.5, MIX "C", N50 (40604050)
- Ⓑ 2½" HMA BINDER COURSE, IL-9.5, N50 (40602978)
- Ⓒ AGGREGATE SUBGRADE IMPROVEMENT, 12" (30300112)
- Ⓓ 6" TOPSOIL PLACEMENT (21101505)
- Ⓔ SEEDING, CLASS 1B (25000115)
- Ⓕ FURNISHED EXCAVATION (20400800)
- Ⓖ STEEL PILES HP 10X42 (51201400)



TYPICAL SECTION
STA 61+68.37 TO STA 62+36.13

MODEL Path: \\... ARGYLE LAKE STATE PARK\0_ID\01\02\03_Sheet\0466929-shr-trip\rc1.dgn

Kaskaskia
Engineering Group, LLC
471 South Third Street
Suite 200
Geneva, Illinois 60134
630.323.1317 phone
www.kaskaskiaeng.com
Professional Engineering Group

USER NAME	ndp
PLOT SCALE	1/8,000 * / 1/4
PLOT DATE	4/1/2021

DESIGNED	NDP	REVISED	-
DRAWN	NDP	REVISED	-
CHECKED	BCD	REVISED	-
DATE	4/1/21	REVISED	-

STATE OF ILLINOIS
DEPARTMENT OF TRANSPORTATION

ARGYLE LAKE STATE PARK – SLOPE FAILURE REPAIR			
TYPICAL SECTIONS			
SCALE:	SHEET 1	OF 1 SHEETS	STA. TO STA.

F.A. RTE.	SECTION	COUNTY	TOTAL SHEETS	SHEET NO.
	ARGYLE LAKE 2021	MCDONOUGH	20	6
			CONTRACT NO. 46929	
ILLINOIS FED. AID PROJECT				

EARTHWORK SUMMARY

LOCATION	EARTHWORK			TOPSOIL			SUBGRADE IMPROVEMENT		
	20200100	20400800	21101505	20201200	30300001	210010000			
	EARTHWORK EXCAVATION	EMBANKMENT	BALANCE WASTE (+) OR SHORTAGE (-)	TOPSOIL EXCAVATION & PLACEMENT	TOPSOIL EMBANKMENT	BALANCE WASTE (+) OR SHORTAGE (-) (NO SHRINKAGE)	REMOVAL & DISPOSAL OF UNSUITABLE MATERIAL	AGGREGATE SUBGRADE IMPROVEMENT	GEOTECHNICAL FABRIC FOR GROUND STABILIZATION
(CU YD)	(CU YD)	(CU YD)	(CU YD)	(CU YD)	(CU YD)	(CU YD)	(CU YD)	(SQ YD)	
MAINLINE	177.0	233.0	-82.0	305.0	301.0	5.0			
R.E. DESCRETION							150.0	150.0	300.0
TOTAL	177.0	233.0	-82.0	305.0	301.0	5.0	150.0	150.0	300.0

EARTHWORK GENERAL NOTES

1. ALL EARTHWORK QUANTITIES ARE CALCULATED BY THE METHOD OF AVERAGE END AREAS USING THE PLAN CROSS SECTIONS.
2. SHRINKAGE FACTOR, ASSUMED TO BE 15% FOR THIS PROJECT IS ESTIMATED FOR THE PURPOSE OF DETERMINING A BALANCE OF EARTHWORK. THE CONTRATOR SHALL ESTIMATE THEIR OWN SHRINKAGE FACTORS IN DETERMINING THEIR EARTHWORK. NO PAYMENT WILL BE MADE ON EARTHWORK QUANTITIES DUE TO VARIATION IN THE SHRINKAGE FACTOR SINCE EARTHWORK IS MEASURED IN ITS FINAL POSITION. NO SHRINKAGE FACTOR WAS APPLIED TO TOPSOIL.
3. RECOMMENDATIONS OUTLINED IN THE STRUCTURAL GEOTECHNICAL REPORT PREPARED BY KASKASKIA ENGINEERING GROUP, LLC, DATED OCTOBER 22, 2020 WERE USED IN PREPERATION OF THE PLANS AND RELATED QUANTITY CALCULATIONS.
4. FOR THE PURPOSE OF ESTIMATING TOPSOIL STRIPPING QUANTITIES, THE TOPSOIL THICKNESS WAS ESTIMATED AT SIX (6) INCHES.
5. IF UNDERCUTS ARE ENCOUNTERED, UNDERCUTS WILL BE PAID FOR AS REMOVAL AND DISPOSAL OF UNSUITABLE MATERIAL. AFTER TOPSOIL STRIPPING AND VEGETATION CLEARING AND PRIOR TO UNDERCUTTING, THE SUBGRADE WILL BE TESTED WITH A STATIC OR DYNAMIC CONE PENETROMETER IN ACCORDANCE WITH THE IDOT SUBGRADE STABILITY MANUAL TO DETERMINE REMEDIAL TREATMENT.
6. TESTING OF SUBGRADES AND EMBANKMENTS WILL BE REQUIRED. TESTING REQUIREMENTS WILL BE PER THE APPLICABLE SECTIONS OF THE STANDARD SPECIFICATIONS AND THE SUBGRADE STABILITY MANUAL. IF PROOF ROLLS ARE REQUIRED BY THE ENGINEER, THE COST SHALL BE CONSIDERED INCLUDED IN THE COST OF EXCAVATION.
7. TO ACCOUNT FOR POTENTIAL UNDERCUTS, 150 CU YD OF AGGREGATE SUBGRADE IMPROVEMENT HAS BEEN PROVIDED FOR LOCATIONS WHERE SOILS TEND TO BE UNSUITABLE WHEN WET. THE ACTUAL NEED FOR REMOVAL AND REPLACEMENT WITH AGGREGATE SUBGRADE IMPROVEMENT WILL BE DETERMINED IN THE FIELD AT THE TIME OF CONSTRUCTION BY THE SOILS ENGINEER (BY USE OF A CONE PENETROMETER IN CONJUNCTION WITH THE IDOT SUBGRADE STABILITY MANUAL AND ROLLED USING FULL LOAD SEMI). IF UNSUITABLE AND/OR UNSTABLE MATERIALS ARE NOT ENCOUNTERED, THE QUANTITY SHALL BE DEDUCTED AND NO ADDITIONAL COMPENSATION WILL BE DUE THE CONTRACTOR.
8. EARTH EXCAVATION SHALL BE PAID FOR ONLY ONCE, REGARDLESS OF STAGING OR SEQUENCING OF CONTRACTORS OPERATIONS THAT REQUIRE STOCKPILING OF MATERIALS FOR LATER USE FOR REDISTRIBUTION AND RESPREADING IN CONSTRUCTING OF EMBANKMENTS.
9. TOPSOIL EXCAVATION AND PLACEMENT WILL INCLUDE EXCAVATION OF THE TOPSOIL MATERIAL IN ITS ORIGINAL POSITION, TEMPORARY STOCK PILING FOR LATER USE, RE-HANDLING AND SPREADING OF THE FINAL TOPSOIL COURSE FOR THE THICKNESS SPECIFIED.
10. EXISTING AGGREGATE BASE COURSE MATERIAL WILL NOT BE MEASURED SEPARATELY FOR PAYMENT BUT SHALL BE INCLUDED IN THE COST OF "PAVEMENT REMOVAL".
11. THE FILL MATERIAL (CLAY SOIL) AND TOPSOIL MATERIAL FROM OFFSITE MUST BE FREE OF NOXIOUS WEEDS AND EXOTIC PLANTS, TREES, ROOTS OR RHIZOMES. THE BEST SITUATION WOULD BE A STERILIZED TOPSOIL SUCH AS THAT HAS BEEN TREATED WITH VAPAM OR HEAT TREATED.

EARTHWORK SCHEDULE

LOCATION	END AREAS				TOPSOIL			EARTHWORK		
	TOPSOIL STRIPPING (TSS)	TOPSOIL EMBANKMENT	EXCAVATION (CUT)	EMBANKMENT (FILL)	21101505 TOPSOIL EXCAVATION & PLACEMENT	TOPSOIL EMBANKMENT	BALANCE WASTE (+) OR SHORTAGE (-) (NO SHRINKAGE)	20200100 EARTHWORK EXCAVATION	EMBANKMENT	20400800 BALANCE WASTE (+) OR SHORTAGE (-)
	(SQ FT)	(SQ FT)	(SQ FT)	(SQ FT)	(CU YD)	(CU YD)	(CU YD)	(CU YD)	(CU YD)	(CU YD)
MAINLINE										
59+25.00	0.0	0.0	0.0	0.0						
59+57.44	6.2	6.0	3.8	2.3	3.7	3.6	0.1	2.3	1.4	0.6
59+83.50	32.6	31.9	28.9	7.2	18.7	18.2	0.5	15.8	4.6	8.8
60+20.00	31.1	30.4	28.6	10.2	43.0	42.1	0.9	38.8	11.7	21.3
60+55.67	14.6	14.1	12.5	9.9	30.1	29.4	0.7	27.1	13.3	9.7
60+85.00	31.2	30.8	33.1	13.9	24.9	24.4	0.5	24.8	13.0	8.1
61+25.00	32.4	31.9	11.9	31.2	47.1	46.4	0.7	33.3	33.5	-5.2
61+60.00	32.3	32.0	6.4	46.5	41.9	41.4	0.5	11.8	50.4	-40.4
61+89.78	16.9	16.9	4.5	31.7	27.1	27.0	0.1	6.0	43.1	-38.0
62+15.00	32.6	32.2	4.2	40.9	23.1	22.9	0.2	4.0	33.9	-30.5
62+36.11	28.3	28.2	9.9	9.9	23.8	23.6	0.2	5.5	19.9	-15.2
62+77.00	0.0	0.0	0.0	0.0	21.4	21.3	0.1	7.5	7.5	-1.1
SHRINKAGE FACTOR			15%							
				TOTAL	304.8	300.3	4.5	176.9	232.3	-81.9
				ADJ. TOTAL	305.0	301.0	5.0	177.0	233.0	-82.0

MODEL: Default; FILE NAME: P:\13-1009\11_Arroyo Lake State Park\10_IDOT\CAD_Sheets\0466929-ent-eshedule_01.dgn

47 South Third Street
Suite 200
Georgetown, Illinois 62424
618.333.8187 phone
www.kaskaskiaeng.com

USER NAME = ndp	DESIGNED -	REVISED -
	DRAWN - NDP	REVISED -
PLOT SCALE = 20.0000' / 1"	CHECKED - BCD	REVISED -
PLOT DATE = 4/1/2021	DATE - 4/1/21	REVISED -

**STATE OF ILLINOIS
DEPARTMENT OF TRANSPORTATION**

**ARGYLE LAKE STATE PARK – SLOPE FAILURE REPAIR
EARTHWORK SCHEDULE & NOTES**

SCALE: SHEET 1 OF 1 SHEETS STA. TO STA.

F.A. RTE.	SECTION	COUNTY	TOTAL SHEETS	SHEET NO.
	ARGYLE LAKE 2021	MCDONOUGH	20	7
			CONTRACT NO. 46929	
ILLINOIS FED. AID PROJECT				

REMOVAL SCHEDULE

LOCATION	44000100	X0300019
	PAVEMENT REMOVAL	REMOVE AND REINSTALL PARKING BLOCKS
	(SQ YD)	(EACH)
ARGYLE LAKE STATE PARK		
STATION STATION		
59+00 - 59+50		
59+50 - 60+00	55.8	
60+00 - 60+50	96.8	3.0
60+50 - 61+00	101.3	5.0
61+00 - 61+50	91.4	4.0
61+50 - 62+00	114.8	3.0
62+00 - 62+50	73.1	
62+50 - 63+00		
TOTAL	533.4	15.0
ADJUSTED TOTAL	534.0	15.0

20100110 TREE REMOVAL (6 TO 15 UNITS DIAMETER)

UNIT	STATION	OFFSET	NOTES
8	60+82.0	47.7' RT	
8	61+32.4	49.5' RT	
16	TOTAL		

X0327008 REMOVE AND RELOCATE SIGN (SPECIAL)

EACH	EXISTING LOCATION		PROPOSED LOCATION		NOTES
	STATION	OFFSET	STATION	OFFSET	
1	59+99.4	79.8' RT	59+99.4	79.8' RT	"SLOW NO WAKE" SIGN
1	62+19.5	26.6' RT	62+18.5	21.1' RT	"ROAD NARROWS" R5-1 SIGN
2	TOTAL				

ROADWAY & IMPROVEMENTS SCHEDULE

LOCATION	30300112	40600275	40600290	40602978	40604050	78000200	78000600
	AGGREGATE SUBGRADE IMPROVEMENT, 12"	BITUMINOUS MATERIALS (PRIME COAT)	BITUMINOUS MATERIALS (TACK COAT)	HOT-MIX ASPHALT BINDER COURSE, IL-9.5, N50	HOT-MIX ASPHALT SURFACE COURSE, IL-9.5, MIX "C", N50	THERMOPLASTIC PAVEMENT MARKING - LINE 4"	THERMOPLASTIC PAVEMENT MARKING - LINE 12"
	(SQ YD)	(POUND)	(POUND)	(TON)	(TON)	(FOOT)	(FOOT)
ARGYLE LAKE STATE PARK							
STATION STATION							
59+00 - 59+50							
59+50 - 60+00	61.7	138.9	13.9	8.3	5.0	54.9	56.3
60+00 - 60+50	103.4	232.6	23.3	14.1	8.5	70.4	
60+50 - 61+00	109.8	247.1	24.7	14.6	8.8	76.0	
61+00 - 61+50	97.0	218.3	21.8	13.2	7.9	89.0	
61+50 - 62+00	117.5	264.4	26.4	16.1	9.6	75.0	17.9
62+00 - 62+50	77.5	174.3	17.4	10.5	6.3	50.7	57.9
62+50 - 63+00							
TOTAL	567.0	1275.7	127.6	76.8	46.1	416.1	132.0
ADJUSTED TOTAL	567.0	1276.0	128.0	77.0	47.0	417.0	133.0

73000100 WOOD SIGN SUPPORT

FOOT	STATION	OFFSET	NOTES
10	59+99.4	79.8' RT	"SLOW NO WAKE" SIGN
15	62+18.5	21.1' RT	"ROAD NARROWS" R5-1 SIGN
25	TOTAL		

Z0065002 DRILLING AND SETTING PILES (IN ROCK)

CU FT	PILES	LENGTH (FT)	DIAMETER (FT)	LOCATION	NOTES
1,192.8	27	25	1.5	ROW 1	
954.3	27	20	1.5	ROW 2	
991.4	33	17	1.5	ROW 3	
3139	TOTAL				

EROSION CONTROL & RESTORATION SCHEDULE

LOCATION	25000115	25000400	25000500	25000600	25100630	25100635	28000250	28000400
	SEEDING, CLASS 1B	NITROGEN FERTILIZER NUTRIENT	PHOSPHORUS FERTILIZER NUTRIENT	POTASSIUM FERTILIZER NUTRIENT	EROSION CONTROL BLANKET	HEAVY DUTY EROSION CONTROL BLANKET	TEMPORARY EROSION CONTROL SEEDING	PERIMETER EROSION BARRIER
	(ACRE)	(POUND)	(POUND)	(POUND)	(SQ YD)	(SQ YD)	(POUND)	(FOOT)
ARGYLE LAKE STATE PARK								
STATION STATION								
59+00 - 59+50								
59+50 - 60+00	0.039	3.5	3.5	3.5	162.9	23.5	3.9	155.7
60+00 - 60+50	0.059	5.3	5.3	5.3	224.1	64.4	5.9	65.7
60+50 - 61+00	0.073	6.6	6.6	6.6	295.3	59.4	7.3	100.2
61+00 - 61+50	0.073	6.6	6.6	6.6	290.9	64.2	7.3	100.3
61+50 - 62+00	0.074	6.7	6.7	6.7	282.4	75.9	7.4	100.4
62+00 - 62+50	0.076	6.8	6.8	6.8	325.9	41.3	7.6	233.8
62+50 - 63+00								
TOTAL	0.394	35.5	35.5	35.5	1581.4	328.6	39.4	756.1
ADJUSTED TOTAL	0.4	36.0	36.0	36.0	1582.0	329.0	40.0	757.0

20101100 TREE TRUNK PROTECTION

EACH	STATION	OFFSET	NOTES
1	59+57.8	29.8' RT	
1	59+71.7	42.3' RT	
1	59+99.9	52.0' RT	
1	60+22.2	50.5' RT	
1	60+55.7	67.2' RT	
1	61+89.8	59.7' RT	
6	TOTAL		

A2006414 TREE, QUERCUS ALBA (WHITE OAK), 1-3/4" CALIPER, BALLED AND BURLAPPED

UNIT	STATION	OFFSET	NOTES
1	61+32.4	49.5' RT	
1	TOTAL		

A2006714 TREE, QUERCUS MACROCARPA (BUR OAK), 1-3/4" CALIPER, BALLED AND BURLAPPED

UNIT	STATION	OFFSET	NOTES
1	60+82.0	47.7' RT	
1	TOTAL		

20101200 TREE ROOT PRUNING

EACH	STATION	OFFSET	NOTES
1	60+55.7	67.2' RT	
1	61+89.8	59.8' RT	
2	TOTAL		

28000500 INLET AND PIPE PROTECTION

EACH	STATION	OFFSET	NOTES
1	59+75.7	22.3' LT	
1	TOTAL		

NOTES
CULVERT PIPE OUTLETS TO LAKE

MODEL: Default
FILE NAME: P:\13-1009.11 Argyle Lake State Park\10 IDOT\CAD_Sheets\0466929-ent-schedule_02.dgn



77 South Third Street Suite 200 Georgetown, Illinois 60144 630.333.8107 phone www.kaskaskiaeng.com	USER NAME = ndp	DESIGNED - NDP	REVISED -
Illinois Professional Design Firm 343 West 5th 31-388536	PLOT SCALE = 20.0000' / in.	DRAWN - NDP	REVISED -
	PLOT DATE = 4/1/2021	CHECKED - BCD	REVISED -
		DATE - 4/1/21	REVISED -

STATE OF ILLINOIS
DEPARTMENT OF TRANSPORTATION

ARGYLE LAKE STATE PARK - SLOPE FAILURE REPAIR
SCHEDULE OF QUANTITIES

SCALE: SHEET 1 OF 1 SHEETS STA. TO STA.

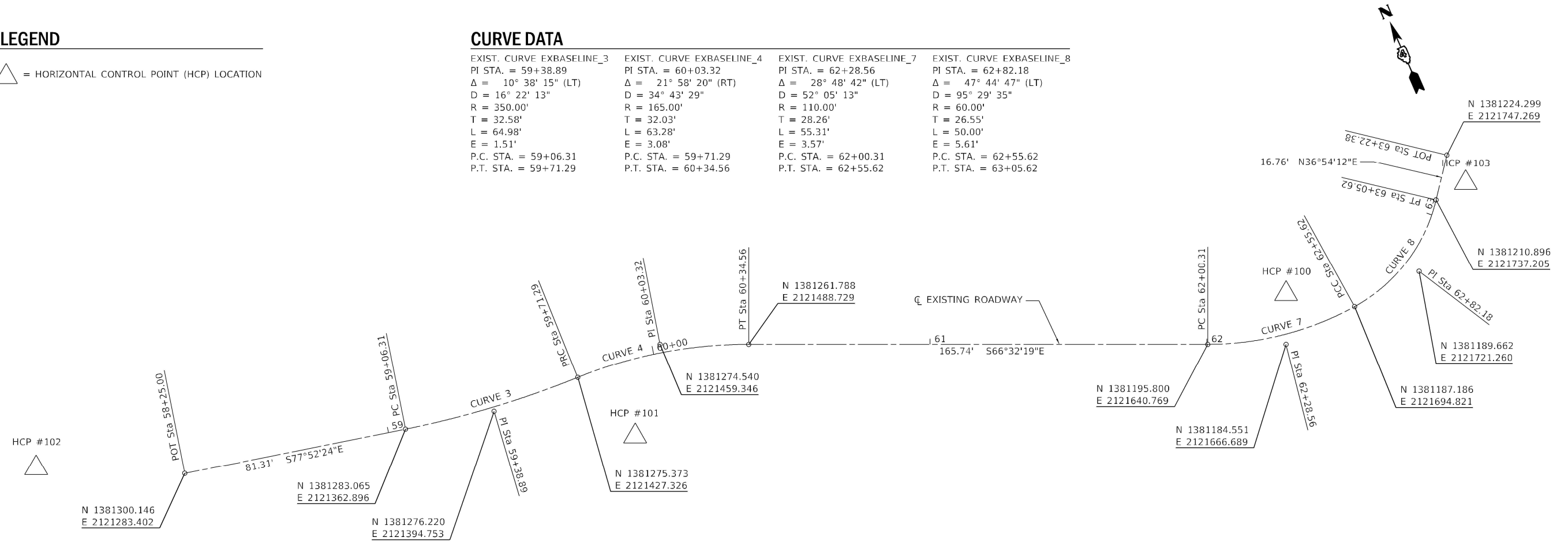
F.A. RTE.	SECTION	COUNTY	TOTAL SHEETS	SHEET NO.
	ARGYLE LAKE 2021	MCDONOUGH	20	8
			CONTRACT NO. 46929	
		ILLINOIS FED. AID PROJECT		

LEGEND

△ = HORIZONTAL CONTROL POINT (HCP) LOCATION

CURVE DATA

EXIST. CURVE EXBASELINE_3	EXIST. CURVE EXBASELINE_4	EXIST. CURVE EXBASELINE_7	EXIST. CURVE EXBASELINE_8
PI STA. = 59+38.89	PI STA. = 60+03.32	PI STA. = 62+28.56	PI STA. = 62+82.18
Δ = 10° 38' 15" (LT)	Δ = 21° 58' 20" (RT)	Δ = 28° 48' 42" (LT)	Δ = 47° 44' 47" (LT)
D = 16° 22' 13"	D = 34° 43' 29"	D = 52° 05' 13"	D = 95° 29' 35"
R = 350.00'	R = 165.00'	R = 110.00'	R = 60.00'
T = 32.58'	T = 32.03'	T = 28.26'	T = 26.55'
L = 64.98'	L = 63.28'	L = 55.31'	L = 50.00'
E = 1.51'	E = 3.08'	E = 3.57'	E = 5.61'
P.C. STA. = 59+06.31	P.C. STA. = 59+71.29	P.C. STA. = 62+00.31	P.C. STA. = 62+55.62
P.T. STA. = 59+71.29	P.T. STA. = 60+34.56	P.T. STA. = 62+55.62	P.T. STA. = 63+05.62



NOTES

THE CONTRACTOR SHALL BE RESPONSIBLE FOR SETTING ADDITIONAL CONTROL POINTS AND BENCHMARKS SHOULD THE ONES PROVIDED BE LOST OR DESTROYED DURING CONSTRUCTION ACTIVITIES.

HORIZONTAL CONTROL POINTS (NAD 83)

POINT	NORTH	EAST	ELEVATION	CHAIN	STATION	OFFSET	DESCRIPTION
100	1381201.231	2121673.967	623.83	EXBASELINE	62+33.19	13.94' LT	CONTROL POINT
101	1381247.694	2121437.918	618.37	EXBASELINE	59+84.82	26.93' RT	CONTROL POINT
102	1381323.245	2121234.939	620.74	EXBASELINE	57+72.77	12.40' LT	CONTROL POINT
103	1381212.278	2121749.460	633.12	EXBASELINE	63+14.08	8.97' RT	CONTROL POINT

MODEL: Default; FILE NAME: P:\19-1009.11 Argyle Lake State Park\DOT\CADD_Sheet\0466929-sha-b.dwg



477 South Third Street
Suite 200
Galesburg, Illinois 61604
630.333.8187 phone
www.kaskaskiaeng.com

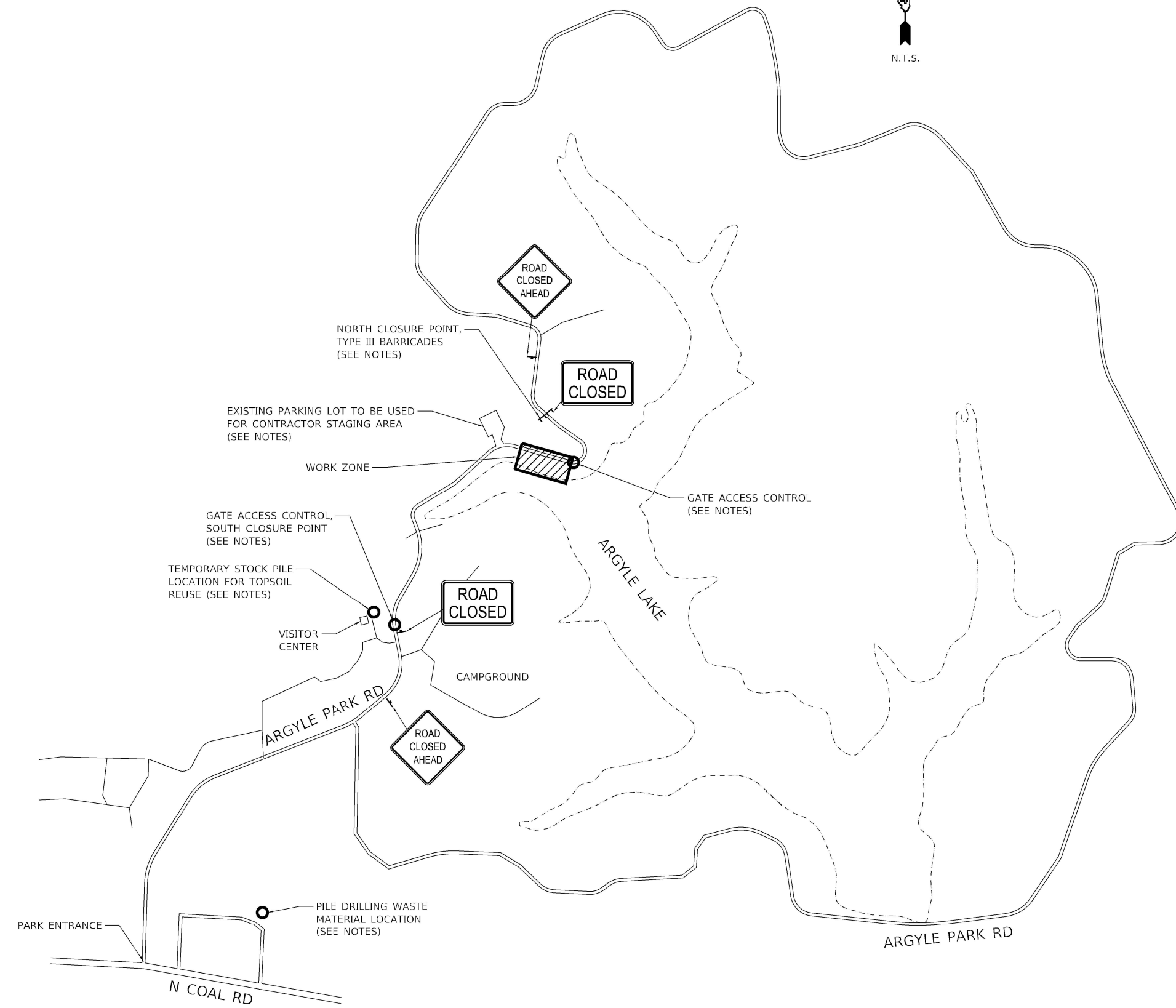
USER NAME = ndp	DESIGNED -	REVISED -
DRAWN - KKH	CHECKED - BCD	REVISED -
PLOT SCALE = 40.0000' / in.	DATE - 4/1/21	REVISED -
PLOT DATE = 4/1/2021		

**STATE OF ILLINOIS
DEPARTMENT OF TRANSPORTATION**

**ARGYLE LAKE STATE PARK – SLOPE FAILURE REPAIR
ALIGNMENT, TIES & BENCHMARK**

SCALE: 1"=20' SHEET 1 OF 1 SHEETS STA. TO STA.

F.A. RTE.	SECTION	COUNTY	TOTAL SHEETS	SHEET NO.
	ARGYLE LAKE 2021	MCDONOUGH	20	9
			CONTRACT NO. 46929	
ILLINOIS FED. AID PROJECT				



- NOTES:**
1. THE SOUTH CLOSURE SHALL UTILIZE EXISTING PARK ACCESS CONTROL GATES. THE CONTRACTOR SHALL BE RESPONSIBLE FOR MAINTAINING GATE CLOSURE AT ALL TIMES DURING THE DAY AND SHALL ENSURE THAT THE GATE IS CLOSED AND LOCKED AT THE END OF EACH WORKING DAY.
 2. THE NORTH CLOSURE SHALL UTILIZE TYPE III BARRICADES AND ADVANCED WARNING SIGNS AS SHOWN. ADDITIONALLY THERE IS AN ACCESS CONTROL GATE JUST TO THE SIDE OF THE WORK ZONE. THE CONTRACTOR SHALL BE RESPONSIBLE FOR MAINTAINING THIS GATE CLOSURE AT ALL TIMES.
 3. THE EXISTING PARKING LOT TO BE USED FOR CONTRACTOR STAGING SHALL HAVE SUFFICIENT EROSION CONTROL PROTECTION MEASURES TO ENSURE THERE IS NOT CONSTRUCTION RUNOFF OR DEBRIS ENTERING THE STORM SEWER SYSTEM OR LAKE WATERS. THIS WILL NOT BE PAID FOR SEPARATELY, BUT WILL BE INCLUDED IN THE COST OF OTHER ITEMS.
 4. THE TEMPORARY STOCK PILE LOCATION IS FOR STORING EXISTING TOPSOIL REMOVED FROM THE SITE TO BE RESPREAD AS DETAILED IN THE PLANS. IT IS ESTIMATED THAT 305 CU YD OF TOPSOIL IS TO BE STORED AND THE AREA NEEDED IS APPROXIMATELY 20 FT IN DIAMETER. THE EXACT LOCATION SHALL BE CONFIRMED WITH IDNR STAFF.
 5. WASTE MATERIAL FROM DRILLING PILE HOLES SHALL BE DISPOSED OF ON SITE AT THE LOCATION NOTED ON THIS SHEET. THE EXACT LOCATION SHALL BE CONFIRMED WITH IDNR STAFF.
 6. THE CONTRACTOR IS RESPONSIBLE FOR ANY DAMAGE CAUSED TO THE EXISTING PARKING LOT. SHOULD ANY DAMAGE OCCUR, THE CONTRACTOR SHALL REPAIR THE PARKING LOT TO ITS ORIGINAL CONDITION. THE CONTRACTOR WILL NOT BE COMPENSATED FOR ANY REPAIRS TO THE PARKING LOT.
 7. CLOSURE OF THE PARK ROADWAY AND ALL MAINTENANCE THEREOF SHALL BE PAID FOR AS "TRAFFIC CONTROL AND PROTECTION, (SPECIAL)."

MODEL: Default
 FILE NAME: P:\19-100\11 Argyle Lake State Park\10 IDOT\CAD_Sheet\1046629-ent-overview.dgn

477 South Third Street
 Suite 200
 Geneva, Illinois 60134
 630.232.8187 phone
 www.kaskaskiaeng.com
 01/19/2024 09:21:28 (1/19/24)
 Illinois Professional Design Firm
 34-067-13
 31-588536

USER NAME = ndp	DESIGNED - NDP	REVISED -
DRAWN - NDP	REVISIONS -	
PLOT SCALE = 100,0000' / in.	CHECKED - BCD	REVISED -
PLOT DATE = 4/1/2021	DATE - 4/1/21	REVISED -

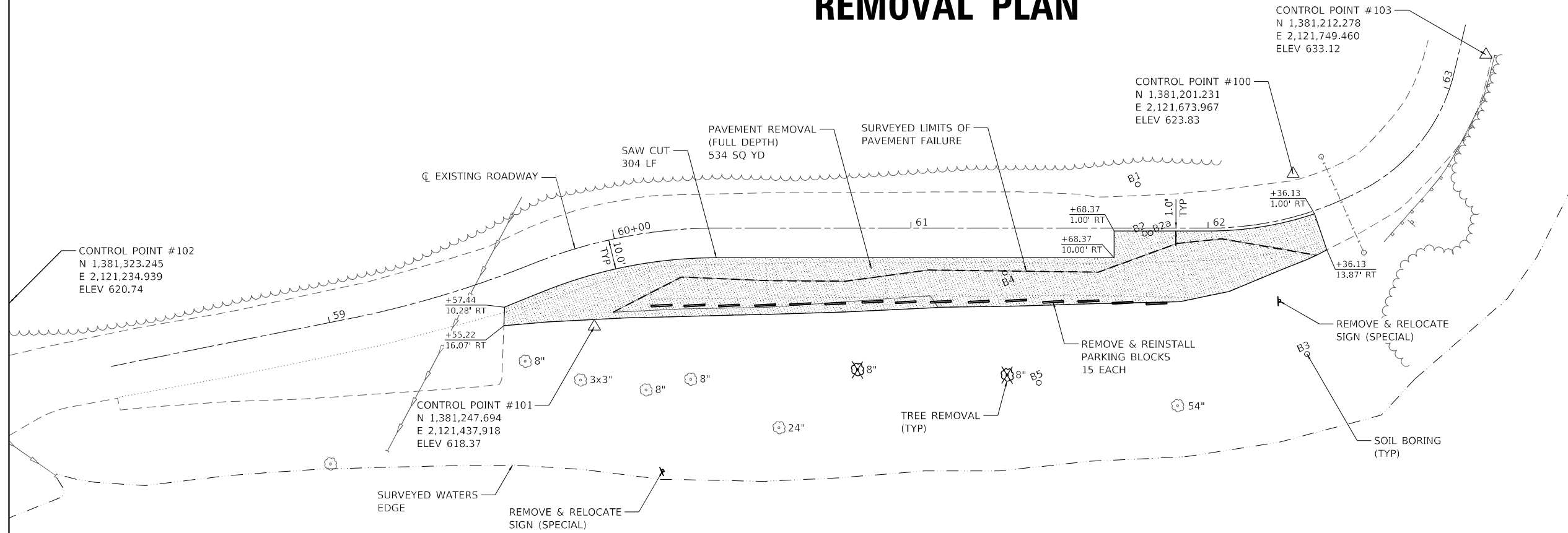
STATE OF ILLINOIS
DEPARTMENT OF TRANSPORTATION

ARGYLE LAKE STATE PARK – SLOPE FAILURE REPAIR
SITE OVERVIEW & ROAD CLOSURE

F.A. RTE.	SECTION	COUNTY	TOTAL SHEETS	SHEET NO.
	ARGYLE LAKE 2021	MCDONOUGH	20	10
CONTRACT NO. 46929				
ILLINOIS FED. AID PROJECT				

SCALE: SHEET 1 OF 1 SHEETS STA. TO STA.

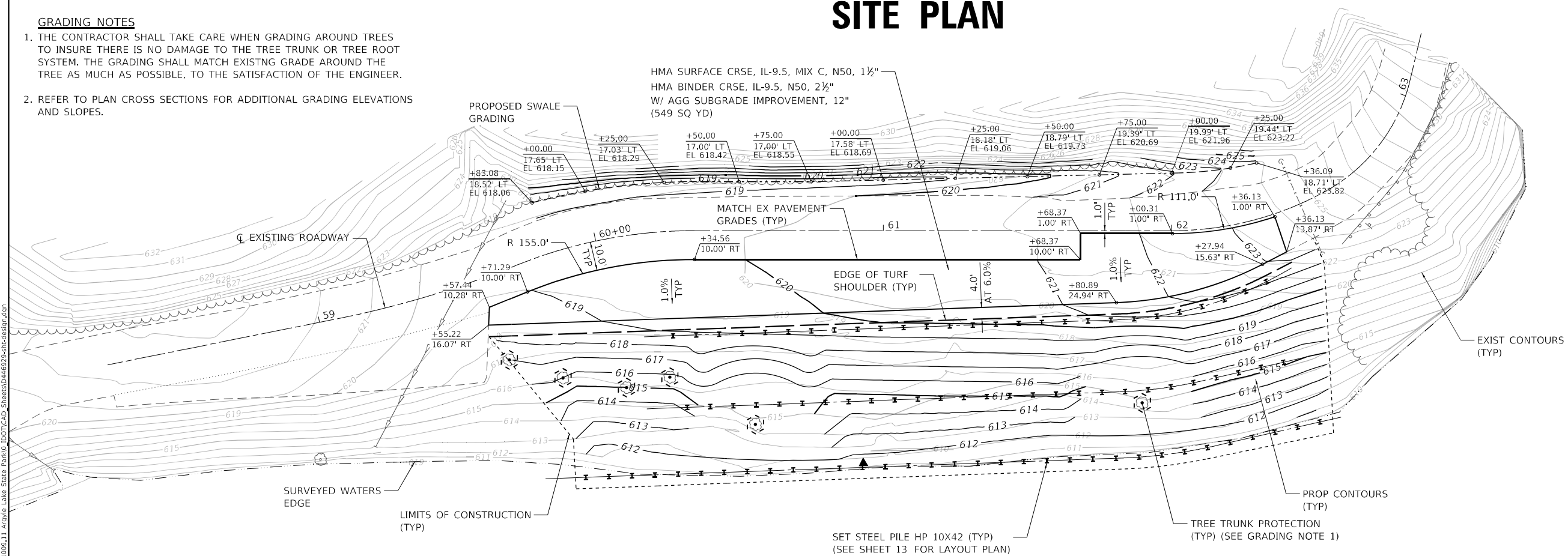
REMOVAL PLAN



SITE PLAN

GRADING NOTES

1. THE CONTRACTOR SHALL TAKE CARE WHEN GRADING AROUND TREES TO INSURE THERE IS NO DAMAGE TO THE TREE TRUNK OR TREE ROOT SYSTEM. THE GRADING SHALL MATCH EXISTING GRADE AROUND THE TREE AS MUCH AS POSSIBLE, TO THE SATISFACTION OF THE ENGINEER.
2. REFER TO PLAN CROSS SECTIONS FOR ADDITIONAL GRADING ELEVATIONS AND SLOPES.



MODEL: D:\p1\1005.11_ArmyLakeStatePark\1005.11_ArmyLakeStatePark\1005.11_ArmyLakeStatePark.dwg

Kaskaskia
Engineering Group, LLC
47 South Third Street
Suite 200
Geneva, Illinois 60134
630.332.8100 phone
www.kaskaskiaeng.com
Professional Engineering Group

USER NAME: ndp
DESIGNED: NDP
DRAWN: NDP
CHECKED: BCD
DATE: 4/1/21
PLOT SCALE: 40,0000 * / in.
PLOT DATE: 4/1/2021

DESIGNED: NDP
DRAWN: NDP
CHECKED: BCD
DATE: 4/1/21

REVISED: -
REVISED: -
REVISED: -
REVISED: -

STATE OF ILLINOIS
DEPARTMENT OF TRANSPORTATION

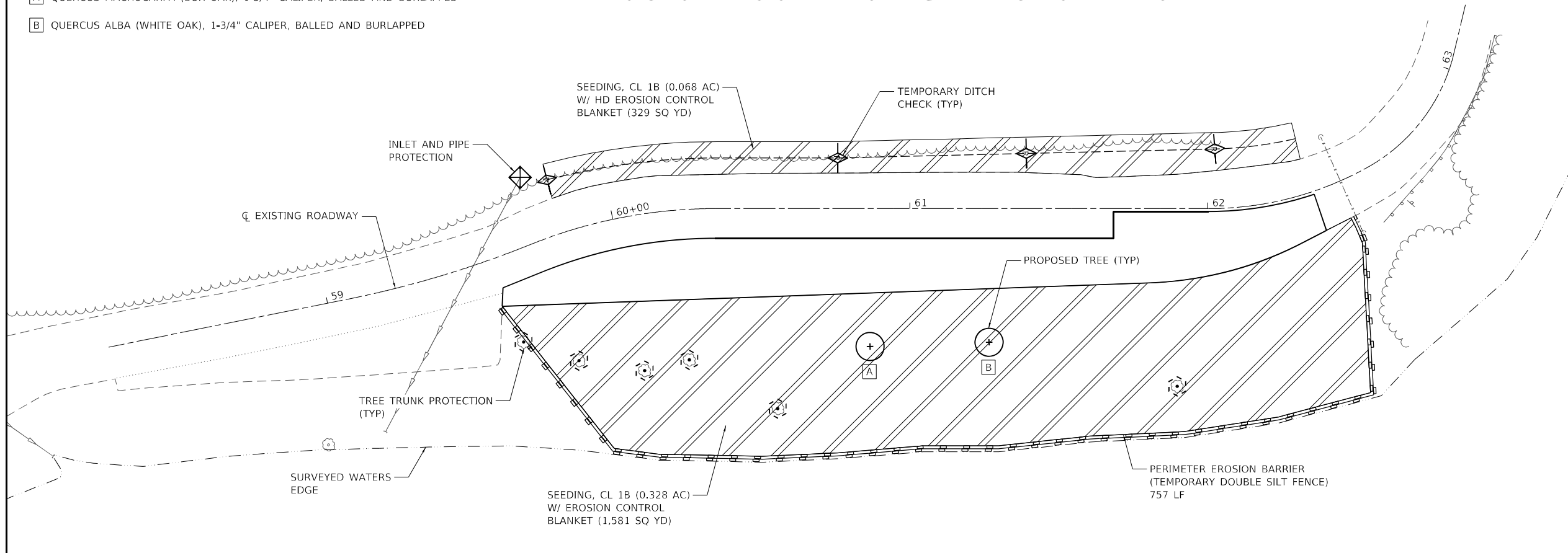
ARGYLE LAKE STATE PARK - SLOPE FAILURE REPAIR
REMOVAL & SITE PLAN

SCALE: 1"=20' SHEET 1 OF 1 SHEETS STA. TO STA.

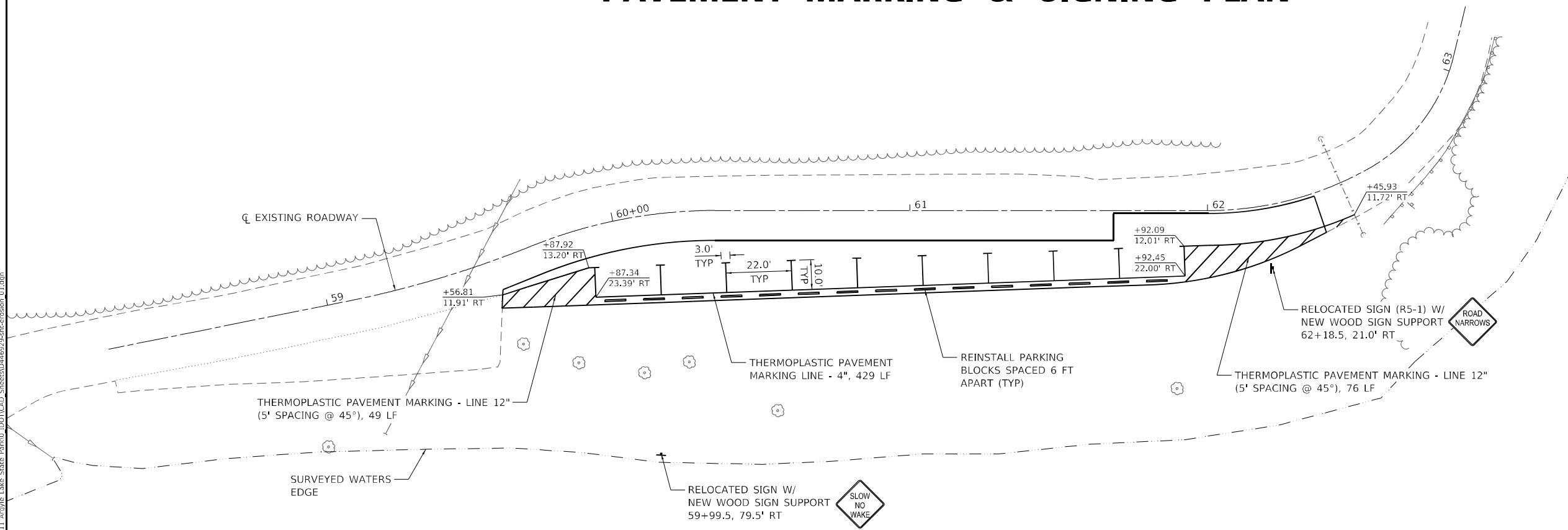
F.A. RTE.	SECTION	COUNTY	TOTAL SHEETS	SHEET NO.
	ARGYLE LAKE 2021	MCDONOUGH	20	11
CONTRACT NO. 46929				
ILLINOIS FED. AID PROJECT				

EROSION CONTROL & RESTORATION PLAN

- A QUERCUS MACROCARPA (BUR OAK), 1-3/4" CALIPER, BALLED AND BURLAPPED
- B QUERCUS ALBA (WHITE OAK), 1-3/4" CALIPER, BALLED AND BURLAPPED



PAVEMENT MARKING & SIGNING PLAN



MODEL: D:\p1\1009.11 - Argyle Lake State Park\10 - EROSION CONTROL - Sheet\1046692-eh-erosion_01.dwg
 FILE: 1046692-eh-erosion_01.dwg

Kaskaskia
 Engineering Group, LLC
 471 South Third Street
 Suite 200
 Geneva, Illinois 60134
 630.333.1317 phone
 www.kaskaskiaeng.com
 04/11/2021
 31-388530

USER NAME	ndp
PLOT SCALE	40,0000 * / in.
PLOT DATE	4/1/2021

DESIGNED	- NDP
DRAWN	- NDP
CHECKED	- BCD
DATE	- 4/1/21

REVISED	-
REVISED	-
REVISED	-
REVISED	-

STATE OF ILLINOIS
DEPARTMENT OF TRANSPORTATION

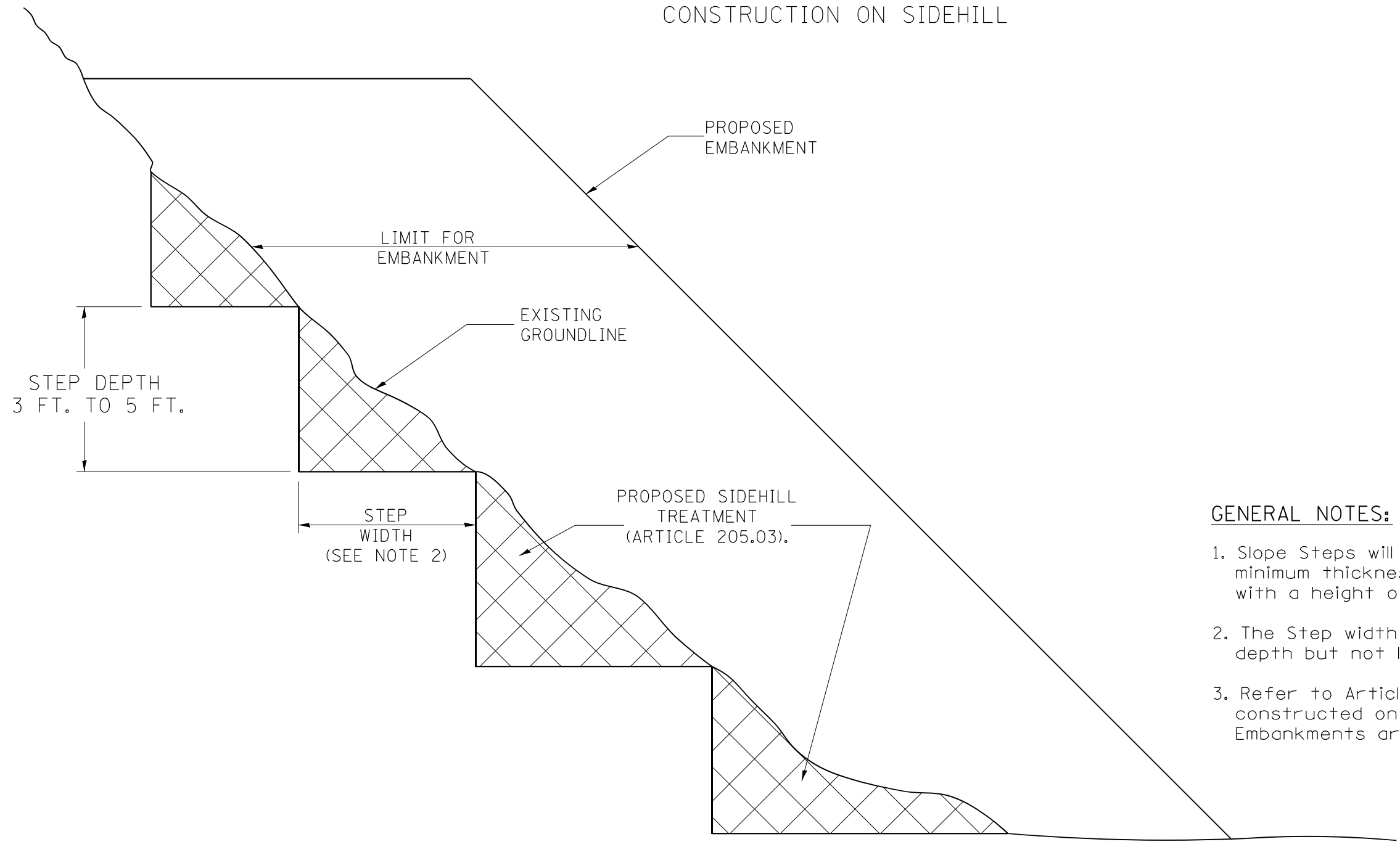
ARGYLE LAKE STATE PARK - SLOPE FAILURE REPAIR
EROSION CONTROL & RESTORATION PLAN
PAVEMENT MARKING & SIGNING PLAN

SCALE: 1"=20' SHEET 1 OF 1 SHEETS STA. TO STA.

F.A. RTE.	SECTION	COUNTY	TOTAL SHEETS	SHEET NO.
	ARGYLE LAKE 2021	MCDONOUGH	20	12
CONTRACT NO. 46929				
ILLINOIS FED. AID PROJECT				

SLOPE STEPS DETAIL

TYPICAL CROSS-SECTION EMBANKMENT CONSTRUCTION ON SIDEHILL

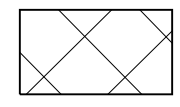


DESIGNER NOTE:
 1. EACH PROJECT SHOULD BE REVIEWED INDEPENDENTLY FOR TREATMENT REQUIRED.
 2. REFER TO THIS DETAIL WITH NOTE ON APPLICABLE TYPICAL SECTIONS.

GENERAL NOTES:

1. Slope Steps will be required for all 12(300) minimum thickness "sliver fills" and on all fills with a height of 10 feet or greater.
2. The Step width shall be twice the Step depth but not less than 6 feet.
3. Refer to Article 205.03 for Embankment to be constructed on Hillside or Slopes, or if existing Embankments are to be widened.

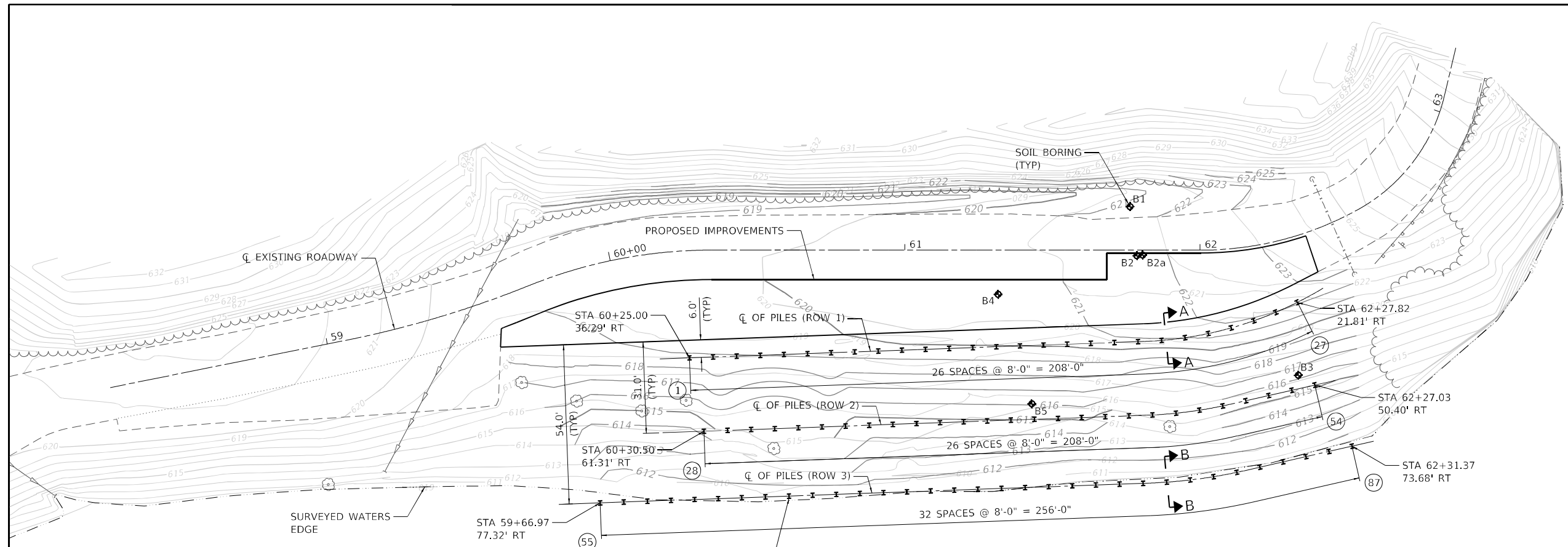
REPLACEMENT MATERIAL:



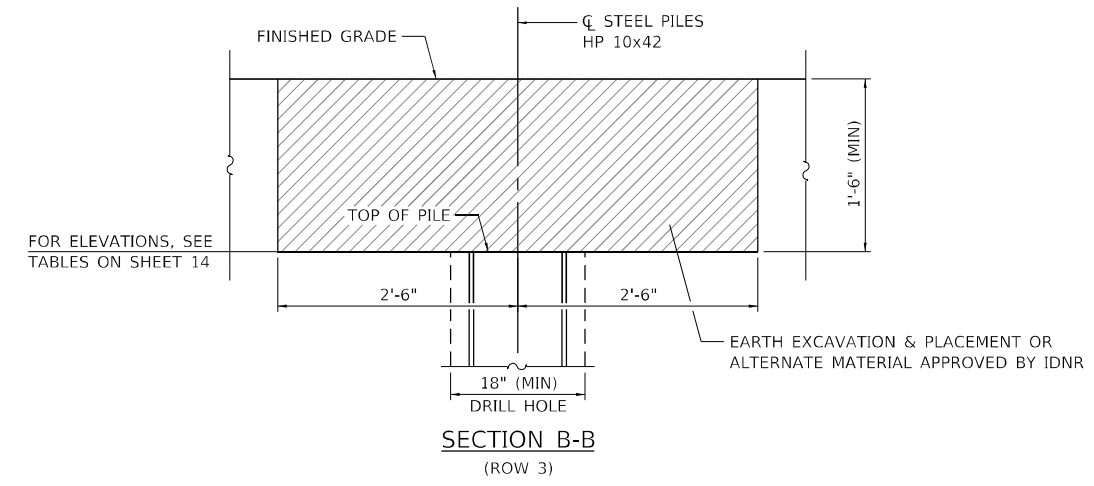
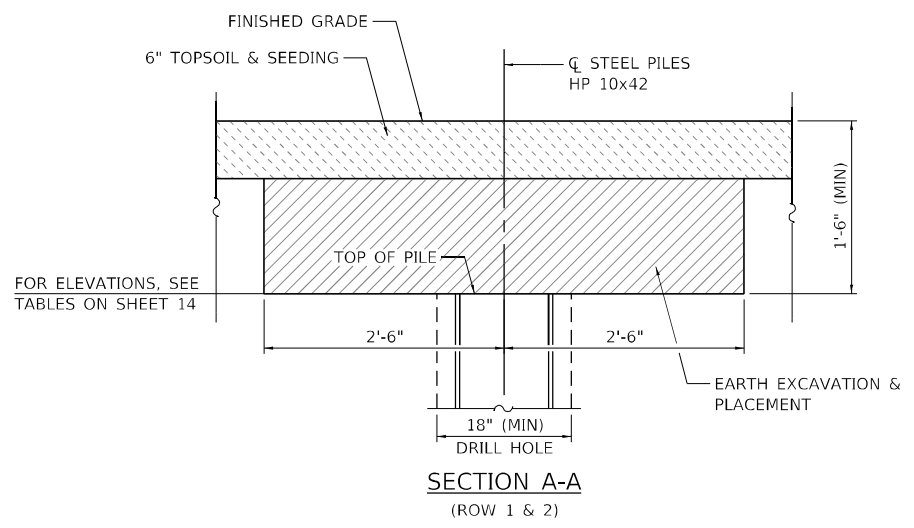
STANDARD EMBANKMENT
(IN ACCORDANCE WITH
205 OF THE STANDARD SPECIFICATION).

All dimensions are in inches (millimeters) unless otherwise noted.

1-1-97	RENUM. L-5.03, NEW REVISION BOX, REVISED TITLE BOX, REVISED GENERAL NOTES.	T.P.			STATE OF ILLINOIS DEPARTMENT OF TRANSPORTATION	SLOPE STEPS DETAIL	F.A. RTE.	SECTION	COUNTY	TOTAL SHEETS	SHEET NO.
10-16-06	REVISED TO 2007 SPEC.	M.A.					ARGYLE LAKE 2021	MCDONOUGH	20	12A	
5-30-18	MINOR CORRECTION	R.D.					CONTRACT NO. 46929		ILLINOIS FED. AID PROJECT		
NOT TO SCALE						CADD STD. 205001-D4					



DRILLING AND SETTING STEEL PILES HP 10x42 (SEE SHEET 14 FOR LAYOUT TABLE) (TYP)



LAYOUT NOTES

1. THE FIRST ROW (ROW 1) OF PILES IS TO BE PLACED AT A MAXIMUM SPACING OF 8 FEET CENTER-TO-CENTER AS SHOWN IN THE PLANS.
2. THE SECOND ROW (ROW 2) OF PILES SHALL BE STAGGERED BETWEEN THE FIRST ROW AT A MAXIMUM SPACING OF 8 FEET CENTER-TO-CENTER AS SHOWN IN THE PLANS.
3. THE THIRD ROW (ROW 3) OF PILES SHALL BE STAGGERED BETWEEN THE SECOND ROW AT A MAXIMUM SPACING OF 8 FEET CENTER-TO-CENTER AS SHOWN IN THE PLANS.

TOTAL BILL OF MATERIAL

ITEM	UNIT	QUANTITY
FURNISHING STEEL PILES HP 10x42	FOOT	1,776
DRILLING AND SETTING PILES (IN ROCK)	CU FT	3,139



MODEL: D:\p1\12-1009-11_Arnyla Lake State Park\10-DOT\CAD_Sheet\1046692-2-28-21-hp-01.dwg

Kaskaskia
Engineering Group, LLC
477 South Third Street
Suite 200
Geneva, Illinois 60134
630.333.1517 phone
www.kaskaskiaeng.com

USER NAME	ndp	DESIGNED	-	REVISED	-
DRAWN	NDP	DRAWN	NDP	REVISED	-
CHECKED	BCD	CHECKED	BCD	REVISED	-
DATE	4/1/21	DATE	4/1/21	REVISED	-

**STATE OF ILLINOIS
DEPARTMENT OF TRANSPORTATION**

**ARGYLE LAKE STATE PARK – SLOPE FAILURE REPAIR
HP PILE LAYOUT PLAN**

SCALE: 1"=20' SHEET 1 OF 1 SHEETS STA. TO STA.

F.A. RTE.	SECTION	COUNTY	TOTAL SHEETS	SHEET NO.
	ARGYLE LAKE 2021	MCDONOUGH	20	13
			CONTRACT NO. 46929	
ILLINOIS FED. AID PROJECT				

HP PILE LAYOUT TABLES

PILE NO.	STATION AT CTR. OF PILE	OFFSET TO CTR. OF PILE	NORTHING	EASTING	EXISTING GROUND ELEVATION	PROPOSED GROUND ELEVATION	TOP OF PILE ELEVATION	BOTTOM OF PILE ELEVATION	FURNISHED PILE LENGTH
1	60+25.00	36.29' RT	1,381,231.269	2,121,467.335	617.96	618.70	617.20	592.20	25'
2	60+35.10	36.22' RT	1,381,228.351	2,121,474.804	618.01	618.89	617.39	592.39	25'
3	60+43.10	35.93' RT	1,381,225.433	2,121,482.253	618.06	618.93	617.43	592.43	25'
4	60+51.09	35.64' RT	1,381,222.515	2,121,489.702	618.09	618.94	617.44	592.44	25'
5	60+59.09	35.35' RT	1,381,219.597	2,121,497.151	618.03	619.05	617.55	592.55	25'
6	60+67.08	35.06' RT	1,381,216.679	2,121,504.599	617.98	619.19	617.69	592.69	25'
7	60+75.08	34.77' RT	1,381,213.761	2,121,512.048	618.11	619.38	617.88	592.88	25'
8	60+83.07	34.48' RT	1,381,210.843	2,121,519.497	618.30	619.41	617.91	592.91	25'
9	60+91.07	34.19' RT	1,381,207.925	2,121,526.946	618.10	619.51	618.01	593.01	25'
10	60+99.06	33.91' RT	1,381,205.007	2,121,534.395	618.71	619.60	618.10	593.10	25'
11	61+07.06	33.62' RT	1,381,202.089	2,121,541.844	618.77	619.68	618.18	593.18	25'
12	61+15.05	33.33' RT	1,381,199.171	2,121,549.293	618.77	619.76	618.26	593.26	25'
13	61+23.05	33.04' RT	1,381,196.253	2,121,556.741	618.80	619.84	618.34	593.34	25'
14	61+31.04	32.75' RT	1,381,193.335	2,121,564.190	618.93	619.92	618.42	593.42	25'
15	61+39.03	32.56' RT	1,381,190.417	2,121,571.639	618.74	620.00	618.50	593.50	25'
16	61+47.03	32.17' RT	1,381,187.500	2,121,579.088	618.37	620.08	618.58	593.58	25'
17	61+55.02	31.88' RT	1,381,184.582	2,121,586.537	618.49	620.16	618.66	593.66	25'
18	61+63.02	31.59' RT	1,381,181.664	2,121,593.986	618.71	620.35	618.85	593.85	25'
19	61+71.01	31.31' RT	1,381,178.746	2,121,601.435	618.98	620.52	619.02	594.02	25'
20	61+79.01	31.02' RT	1,381,175.828	2,121,608.883	619.10	620.63	619.13	594.13	25'
21	61+87.00	30.59' RT	1,381,173.039	2,121,616.381	619.25	620.80	619.30	594.30	25'
22	61+94.94	29.67' RT	1,381,170.715	2,121,624.034	619.17	621.04	619.54	594.54	25'
23	62+02.30	28.28' RT	1,381,168.881	2,121,631.820	619.36	621.36	619.86	594.86	25'
24	62+08.58	26.73' RT	1,381,167.546	2,121,639.706	619.59	621.54	620.04	595.04	25'
25	62+14.92	25.13' RT	1,381,166.713	2,121,647.661	619.87	621.74	620.24	595.24	25'
26	62+21.34	23.49' RT	1,381,166.386	2,121,655.653	619.90	621.95	620.45	595.45	25'
27	62+27.82	21.81' RT	1,381,166.568	2,121,663.645	620.60	622.16	620.66	595.66	25'

PILE NO.	STATION AT CTR. OF PILE	OFFSET TO CTR. OF PILE	NORTHING	EASTING	EXISTING GROUND ELEVATION	PROPOSED GROUND ELEVATION	TOP OF PILE ELEVATION	BOTTOM OF PILE ELEVATION	FURNISHED PILE LENGTH
28	60+30.50	61.31' RT	1,381,206.533	2,121,461.961	614.76	614.31	612.81	592.81	20'
29	60+40.00	61.06' RT	1,381,203.615	2,121,469.410	615.07	615.07	613.57	593.57	20'
30	60+48.00	60.77' RT	1,381,200.697	2,121,476.859	615.61	615.61	614.11	594.11	20'
31	60+55.99	60.48' RT	1,381,197.779	2,121,484.308	615.59	615.63	614.13	594.13	20'
32	60+63.99	60.19' RT	1,381,194.861	2,121,491.756	615.56	615.56	614.06	594.06	20'
33	60+71.98	59.90' RT	1,381,191.943	2,121,499.205	615.52	615.52	614.02	594.02	20'
34	60+79.98	59.61' RT	1,381,189.025	2,121,506.654	615.55	614.93	613.43	593.43	20'
35	60+87.97	59.32' RT	1,381,186.107	2,121,514.103	615.59	614.60	613.10	593.10	20'
36	60+95.97	59.03' RT	1,381,183.189	2,121,521.552	615.63	614.66	613.16	593.16	20'
37	61+03.96	58.74' RT	1,381,180.271	2,121,529.001	615.71	614.74	613.24	593.24	20'
38	61+11.96	58.46' RT	1,381,177.353	2,121,536.449	615.43	614.80	613.30	593.30	20'
39	61+19.95	58.17' RT	1,381,174.435	2,121,543.898	615.01	614.86	613.36	593.36	20'
40	61+27.95	57.88' RT	1,381,171.517	2,121,551.347	614.89	614.93	613.43	593.43	20'
41	61+35.94	57.59' RT	1,381,168.599	2,121,558.796	614.67	614.97	613.47	593.47	20'
42	61+43.93	57.30' RT	1,381,165.681	2,121,566.245	614.44	615.04	613.54	593.54	20'
43	61+51.93	57.01' RT	1,381,162.763	2,121,573.694	614.20	615.09	613.59	593.59	20'
44	61+59.92	56.72' RT	1,381,159.845	2,121,581.143	614.03	615.21	613.71	593.71	20'
45	61+67.92	56.43' RT	1,381,156.927	2,121,588.591	614.37	614.59	613.09	593.09	20'
46	61+75.91	56.14' RT	1,381,154.009	2,121,596.040	614.80	614.80	613.30	593.30	20'
47	61+83.91	55.84' RT	1,381,151.102	2,121,603.493	615.23	615.23	613.73	593.73	20'
48	61+91.88	55.24' RT	1,381,148.478	2,121,611.050	615.71	615.71	614.21	594.21	20'
49	61+99.82	54.22' RT	1,381,146.257	2,121,618.734	615.61	615.61	614.11	594.11	20'
50	62+05.29	52.95' RT	1,381,144.446	2,121,626.526	615.58	615.58	614.08	594.08	20'
51	62+10.65	51.74' RT	1,381,142.951	2,121,634.385	615.57	615.46	613.96	593.96	20'
52	62+16.07	50.89' RT	1,381,141.476	2,121,642.248	615.52	615.39	613.89	593.89	20'
53	62+21.54	50.45' RT	1,381,140.001	2,121,650.110	615.45	615.35	613.85	593.85	20'
54	62+27.03	50.40' RT	1,381,138.526	2,121,657.973	615.38	615.22	613.72	593.72	20'

PILE NO.	STATION AT CTR. OF PILE	OFFSET TO CTR. OF PILE	NORTHING	EASTING	EXISTING GROUND ELEVATION	PROPOSED GROUND ELEVATION	TOP OF PILE ELEVATION	BOTTOM OF PILE ELEVATION	FURNISHED PILE LENGTH
55	59+66.97	77.32' RT	1,381,198.248	2,121,420.052	*	*	608.10	591.10	17'
56	59+75.67	79.98' RT	1,381,195.330	2,121,427.501	*	*	608.10	591.10	17'
57	59+90.81	82.16' RT	1,381,192.412	2,121,434.950	*	*	608.10	591.10	17'
58	60+06.62	83.60' RT	1,381,189.494	2,121,442.398	*	*	608.10	591.10	17'
59	60+22.86	84.27' RT	1,381,186.576	2,121,449.847	610.17	610.17	608.67	591.67	17'
60	60+36.84	84.18' RT	1,381,183.658	2,121,457.296	610.40	610.40	608.90	591.90	17'
61	60+44.83	83.90' RT	1,381,180.740	2,121,464.745	611.71	611.71	610.21	593.21	17'
62	60+52.83	83.61' RT	1,381,177.822	2,121,472.194	611.83	611.83	610.33	593.33	17'
63	60+60.82	83.32' RT	1,381,174.904	2,121,479.643	611.65	611.65	610.15	593.15	17'
64	60+68.81	83.03' RT	1,381,171.986	2,121,487.092	611.47	611.47	609.97	592.97	17'
65	60+76.81	82.74' RT	1,381,169.068	2,121,494.540	611.29	611.29	609.79	592.79	17'
66	60+84.80	82.45' RT	1,381,166.150	2,121,501.989	611.08	611.08	609.58	592.58	17'
67	60+92.80	82.16' RT	1,381,163.232	2,121,509.438	610.81	610.81	609.31	592.31	17'
68	61+00.79	81.87' RT	1,381,160.314	2,121,516.887	610.17	610.17	608.67	591.67	17'
69	61+08.79	81.59' RT	1,381,157.396	2,121,524.336	610.04	610.04	608.54	591.54	17'
70	61+16.78	81.30' RT	1,381,154.478	2,121,531.785	610.33	610.33	608.83	591.83	17'
71	61+24.78	81.01' RT	1,381,151.560	2,121,539.234	610.62	610.62	609.12	592.12	17'
72	61+32.77	80.72' RT	1,381,148.642	2,121,546.682	610.59	610.59	609.09	592.09	17'
73	61+40.77	80.43' RT	1,381,145.724	2,121,554.131	610.05	610.05	608.55	591.55	17'
74	61+48.76	80.14' RT	1,381,142.806	2,121,561.580	609.84	609.84	608.34	591.34	17'
75	61+56.76	79.85' RT	1,381,139.888	2,121,569.029	*	*	608.10	591.10	17'
76	61+64.75	79.56' RT	1,381,136.970	2,121,576.478	*	*	608.10	591.10	17'
77	61+72.75	79.27' RT	1,381,134.052	2,121,583.927	*	*	608.10	591.10	17'
78	61+80.74	78.99' RT	1,381,131.134	2,121,591.376	*	*	608.10	591.10	17'
79	61+88.73	78.60' RT	1,381,128.310	2,121,598.860	*	*	608.10	591.10	17'
80	61+96.70	77.85' RT	1,381,125.821	2,121,606.462	*	*	608.10	591.10	17'
81	62+02.85	76.80' RT	1,381,123.683	2,121,614.170	*	*	608.10	591.10	17'
82	62+07.52	75.67' RT	1,381,121.902	2,121,621.969	*	*	608.10	591.10	17'
83	62+12.24	74.60' RT	1,381,120.405	2,121,629.827	*	*	608.10	591.10	17'
84	62+16.99	73.85' RT	1,381,118.930	2,121,637.690	*	*	608.10	591.10	17'
85	62+21.78	73.45' RT	1,381,117.455	2,121,645.553	*	*	608.10	591.10	17'
86	62+26.58	73.39' RT	1,381,115.979	2,121,653.416	*	*	608.10	591.10	17'
87	62+31.37	73.68' RT	1,381,114.504	2,121,661.279	*	*	608.10	591.10	17'

* THESE LOCATIONS ARE IN THE WATER AND BEYOND THE LIMITS OF THE SURVEY. THE PROPOSED ELEVATION AT THESE LOCATIONS SHALL BE THE SAME AS THE EXISTING ELEVATION. THE CONTRACTOR SHALL VERIFY ALL ELEVATIONS PRIOR TO DRILLING AND SETTING THE PILES. THE MAXIMUM ELEVATION ALLOWED FOR PILES LOCATED IN THE WATER IS 608.10.

MODEL: Default
FILE NAME: P:\13-1009-11 Argyle Lake State Park\DDOT\CAD_Sheet\0446929-ent-hpfile_02.dgn

Kaskaskia
Engineering Group, LLC
Professional Engineering Group

USER NAME = ndp
PLOT SCALE = 20.0000' / in.
PLOT DATE = 4/1/2021

DESIGNED -
DRAWN - NDP
CHECKED - BCD
DATE - 4/1/21

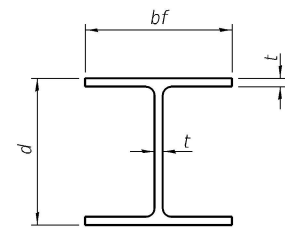
REVISED -
REVISED -
REVISED -
REVISED -

STATE OF ILLINOIS
DEPARTMENT OF TRANSPORTATION

ARGYLE LAKE STATE PARK - SLOPE FAILURE REPAIR
HP PILE LAYOUT TABLES

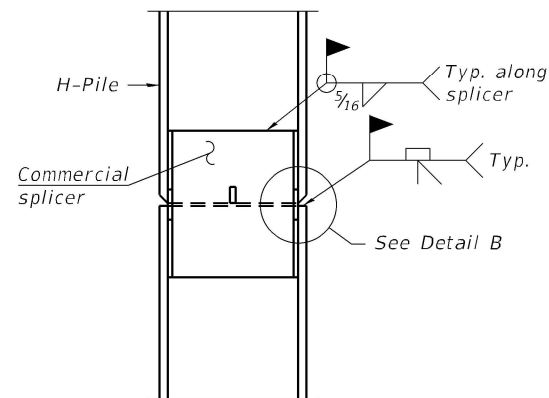
SCALE: SHEET 1 OF 1 SHEETS STA. TO STA.

F.A. RTE.	SECTION	COUNTY	TOTAL SHEETS	SHEET NO.
	ARGYLE LAKE 2021	MCDONOUGH	20	14
CONTRACT NO. 46929				
ILLINOIS FED. AID PROJECT				

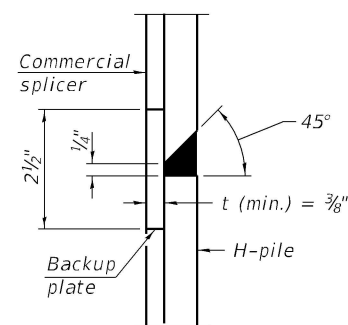


STEEL PILE TABLE

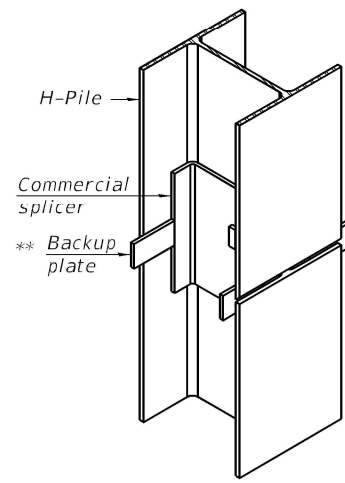
Designation	Depth d	Flange width bf	Web and Flange thickness t	Encasement diameter A
HP 14x117	14 1/4"	14 7/8"	1 3/16"	30"
x102	14"	14 3/4"	1 1/16"	30"
x89	13 7/8"	14 3/4"	5/8"	30"
x73	13 3/8"	14 3/8"	1/2"	30"
HP 12x84	12 1/4"	12 1/4"	1 1/16"	24"
x74	12 1/8"	12 1/4"	5/8"	24"
x63	12"	12 1/8"	1/2"	24"
x53	11 3/4"	12"	7/16"	24"
HP 10x57	10"	10 1/4"	9/16"	24"
x42	9 3/4"	10 1/8"	7/16"	24"
HP 8x36	8"	8 7/8"	7/16"	18"



ELEVATION

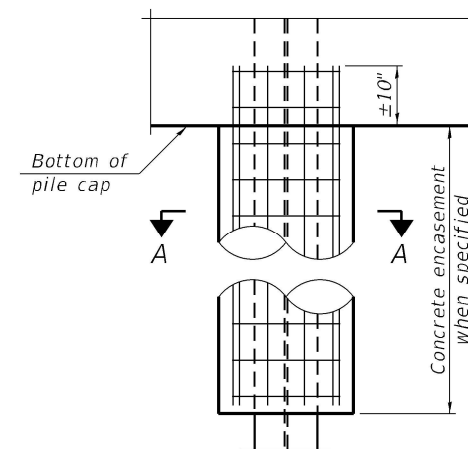


DETAIL "B"

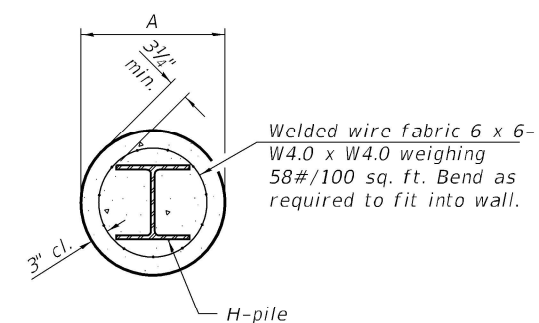


ISOMETRIC VIEW

WELDED COMMERCIAL SPLICE

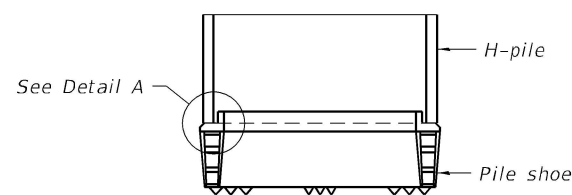


ELEVATION

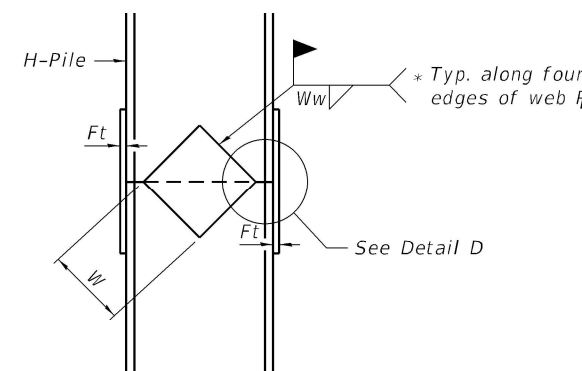


SECTION A-A

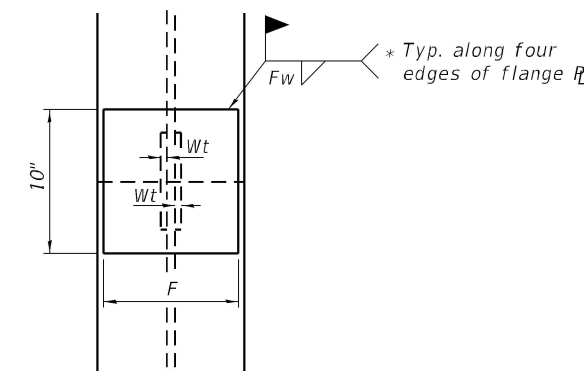
INDIVIDUAL PILE CONCRETE ENCASUREMENT
 (Forms for encasement may be omitted when soil conditions permit).



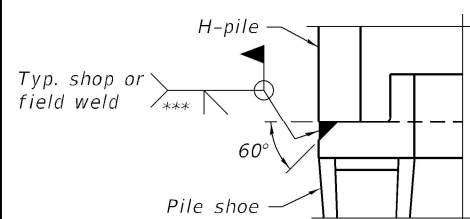
ELEVATION



ELEVATION

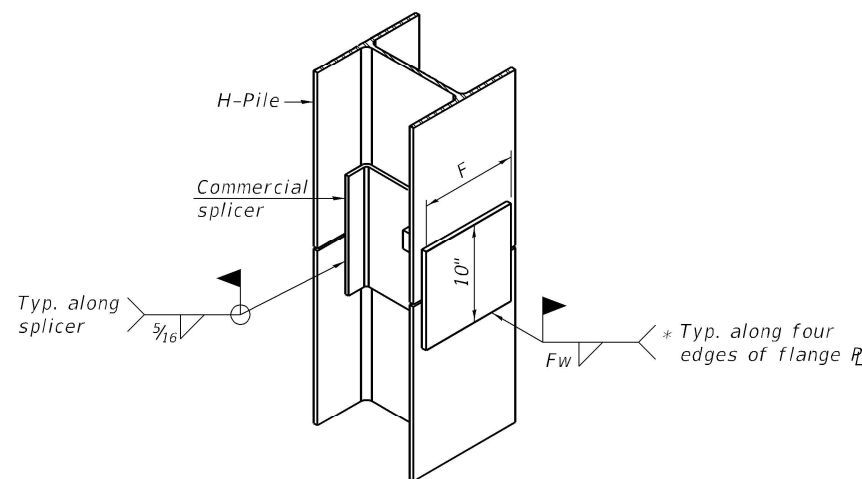


END VIEW



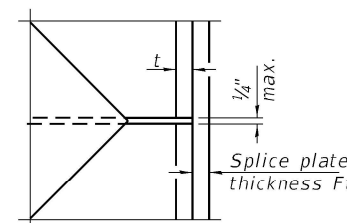
DETAIL A

SHOE ATTACHMENT



ISOMETRIC VIEW

WELDED COMMERCIAL SPLICE ALTERNATE



DETAIL D

WELDED PLATE FIELD SPLICE

Designation	F	Ft	Fw	W	Wt	Ww
HP 14x117	12 1/2"	1"	7/8"	7 3/4"	5/8"	1/2"
x102	12 1/2"	7/8"	3/4"	7 3/4"	5/8"	1/2"
x89	12 1/2"	3/4"	1 1/16"	7 3/4"	5/8"	1/2"
x73	12 1/2"	5/8"	9/16"	7 3/4"	5/8"	1/2"
HP 12x84	10"	7/8"	1 1/16"	6 1/2"	5/8"	1/2"
x74	10"	7/8"	1 1/16"	6 1/2"	5/8"	1/2"
x63	10"	5/8"	1/2"	6 1/2"	1/2"	3/8"
x53	10"	5/8"	1/2"	6 1/2"	1/2"	3/8"
HP 10x57	8"	3/4"	9/16"	5 1/4"	1/2"	3/8"
x42	8"	5/8"	9/16"	5 1/4"	1/2"	3/8"
HP 8x36	7"	3/8"	7/16"	4 1/4"	1/2"	3/8"

Note:
The steel H-piles shall be according to AASHTO M270 Grade 50.

- * Interrupt welds 1/4" from end of web and/or each flange.
- ** Remove portions of backup plates that extend outside the flanges.
- *** Weld size per pile shoe manufacturer (5/16" min.).

MODEL: Defaul... FILE NAME: P:\13-100\11_Ar... State Park\0_IDOT\CAD_Sheet\046629-sh-hp-df-03.dgn

F-HP 8-11-2017



47 South Third Street
 Suite 200
 Geneva, Illinois 60134
 630.333.8507 phone
 www.kaskaskiaeng.com
 Illinois Professional Design Firm
 343 North 5th
 31-588536

DESIGNED -
 DRAWN -
 CHECKED - BCD
 DATE - 4/1/21

REVISIONS
 REVISED -
 REVISED -
 REVISED -
 REVISED -

**STATE OF ILLINOIS
 DEPARTMENT OF TRANSPORTATION**

**ARGYLE LAKE STATE PARK - SLOPE FAILURE REPAIR
 HP PILE DETAILS**

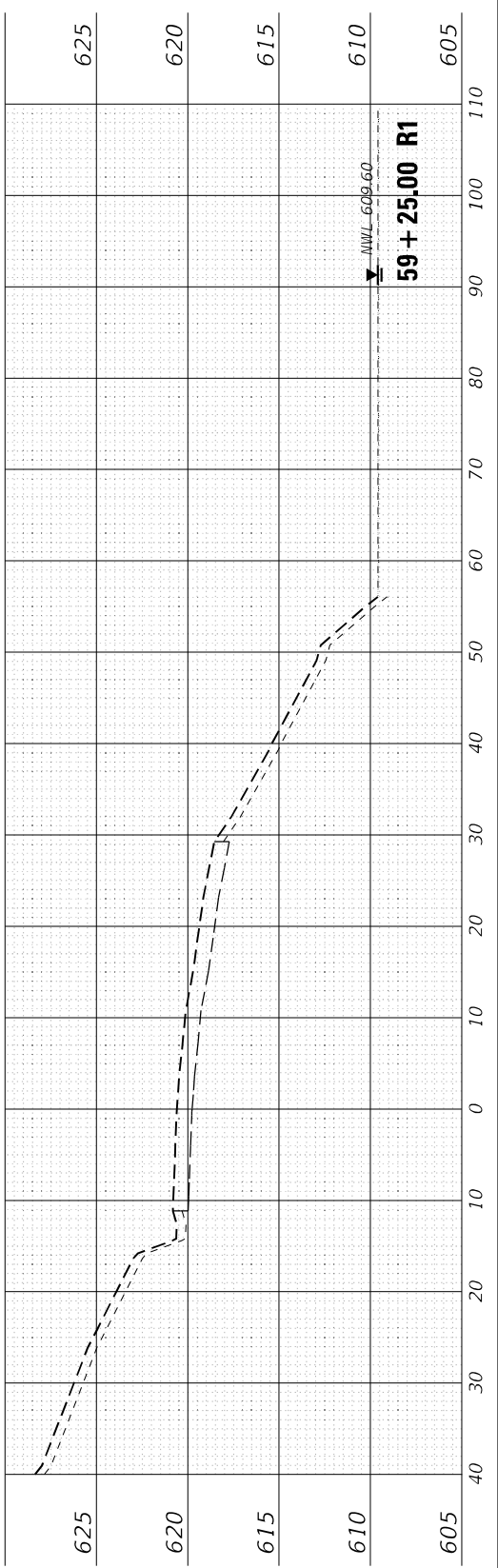
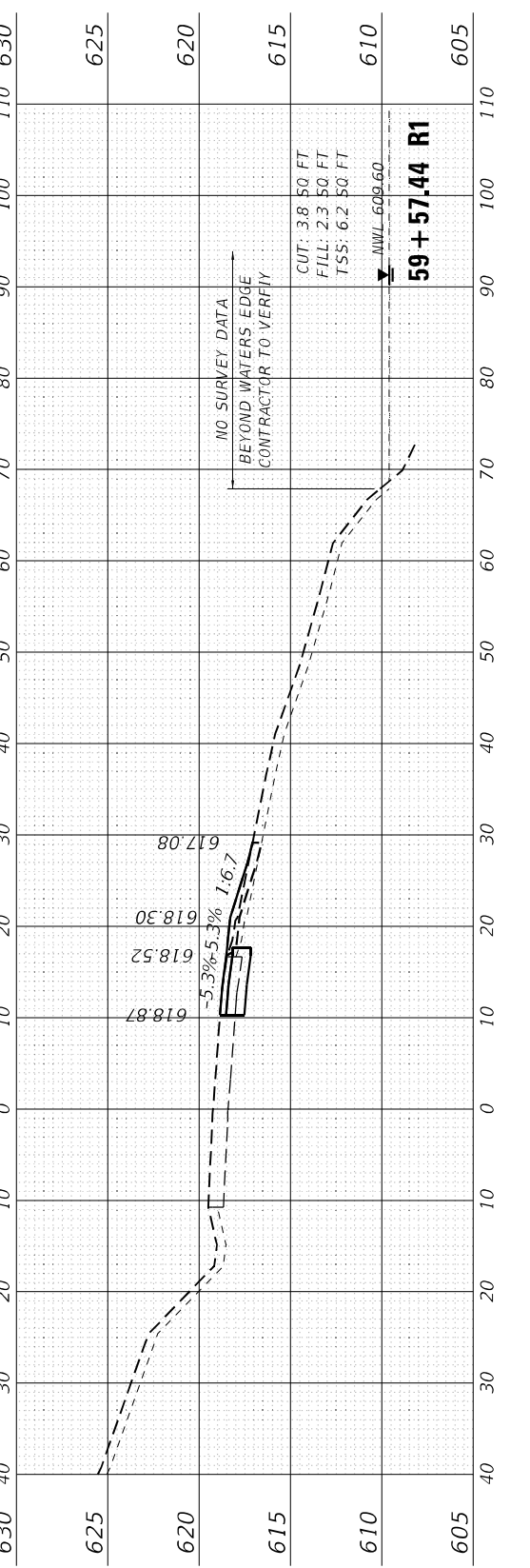
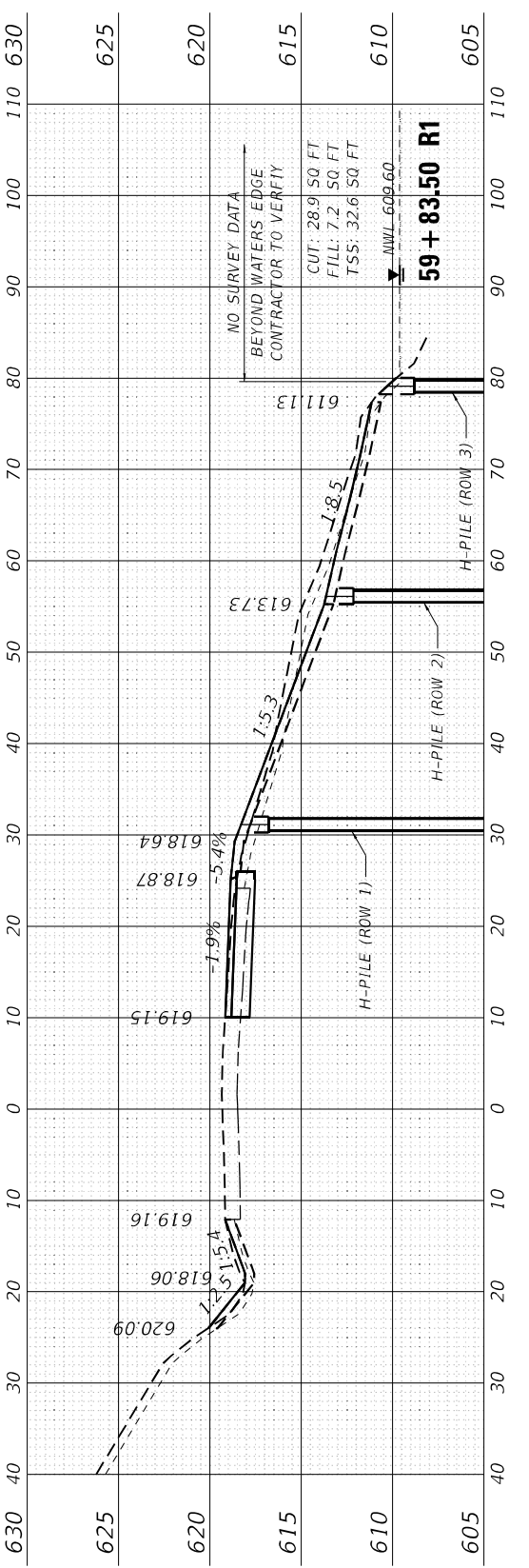
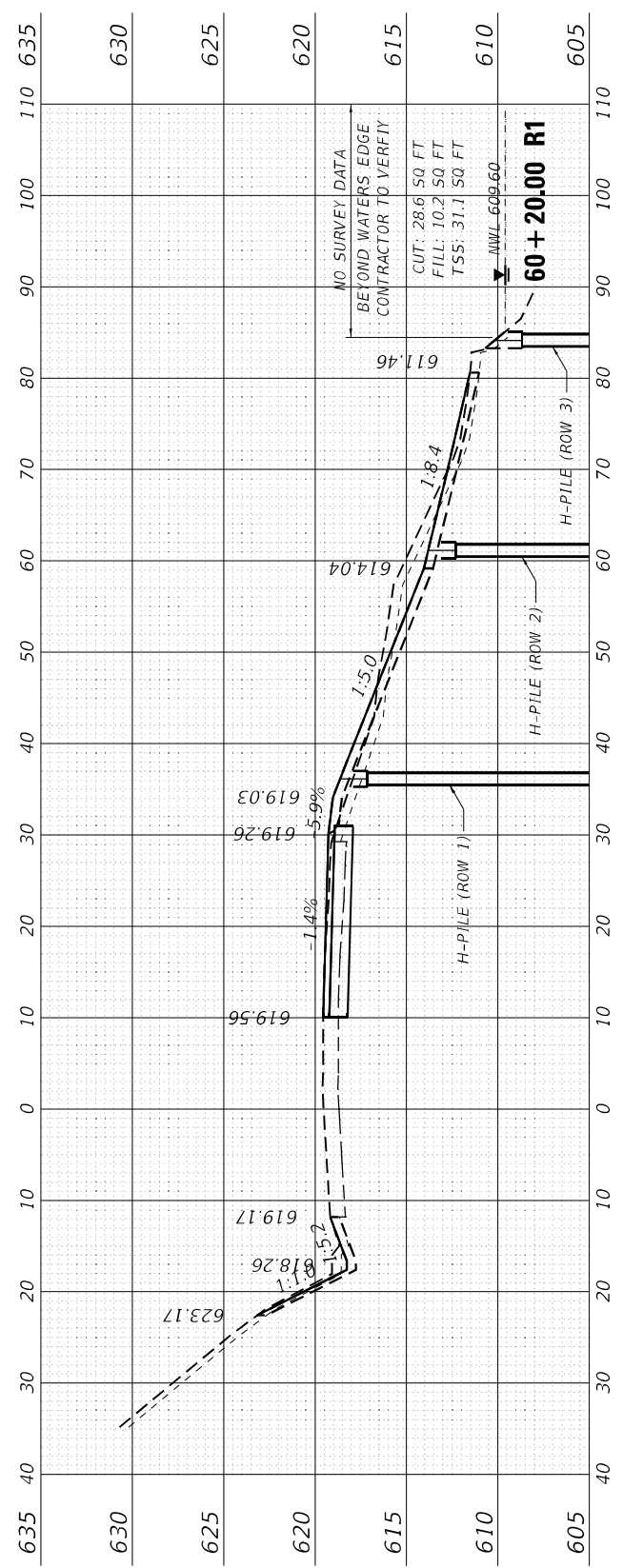
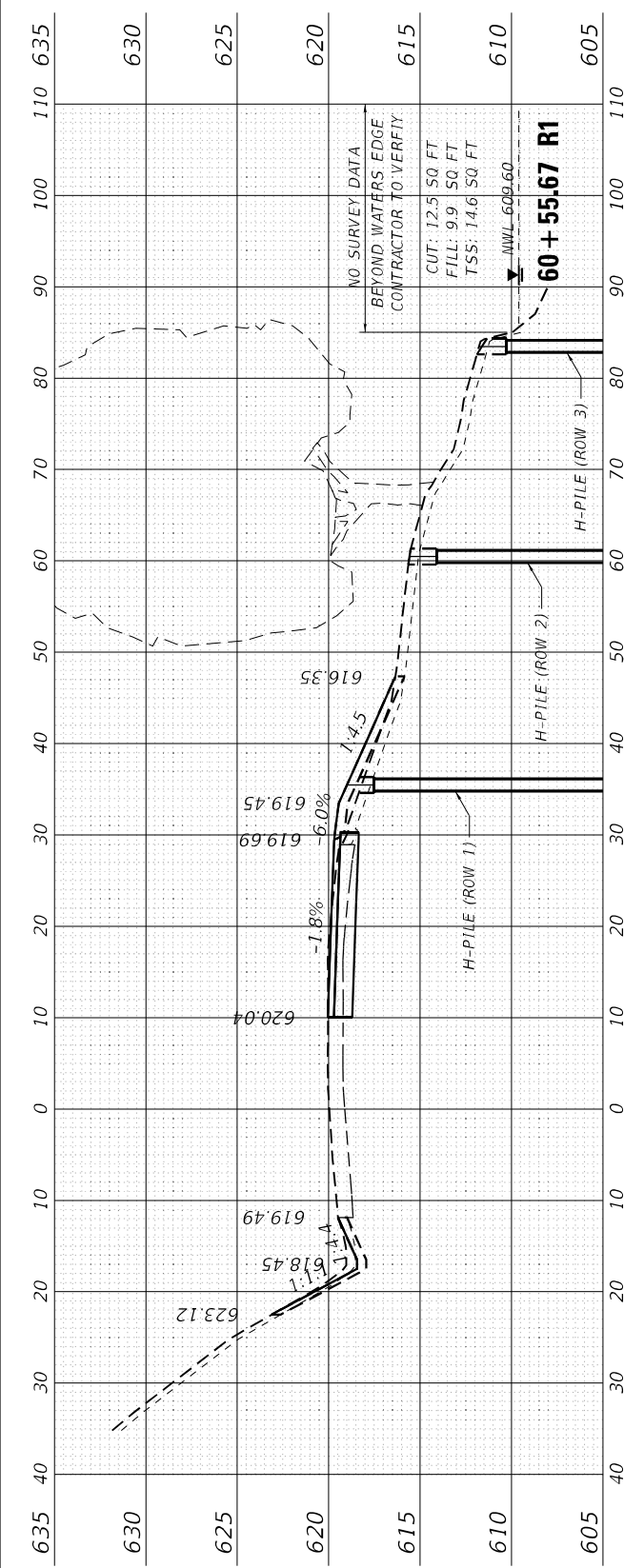
SCALE: SHEET 1 OF 1 SHEETS STA. TO STA.

F.A. RTE.	SECTION	COUNTY	TOTAL SHEETS	SHEET NO.
	ARGYLE LAKE 2021	MCDONOUGH	20	15
			CONTRACT NO. 46929	
ILLINOIS FED. AID PROJECT				

FINAL SURVEY	SURVEYED	DATE
NOTE BOOK	PLOTTED	BY
NO.	TEMPLATE	
	AREAS CHECKED	

ORIGINAL SURVEY	SURVEYED	DATE
NOTE BOOK	PLOTTED	BY
NO.	TEMPLATE	
	AREAS CHECKED	

MODEL: Definit
 FILE: MAMPT PL 02-1005.11 Argyle Lake State Park.dwg
 0:\D\1245_Sheets\1245629-2018-sec1.dgn



Kaskaskia
 Engineering Group, LLC
 47 South Third Street
 Suite 200
 Havana, Illinois 62344
 618.332.8187
 www.kaskaskiaeng.com

USER NAME	ndp
DESIGNED	NDP
DRAWN	NDP
CHECKED	BCD
DATE	4/1/21
PLOT SCALE	20,0000 * / in.
PLOT DATE	4/1/2021

REVISD	-
REVISD	-
REVISD	-
REVISD	-

**STATE OF ILLINOIS
 DEPARTMENT OF TRANSPORTATION**

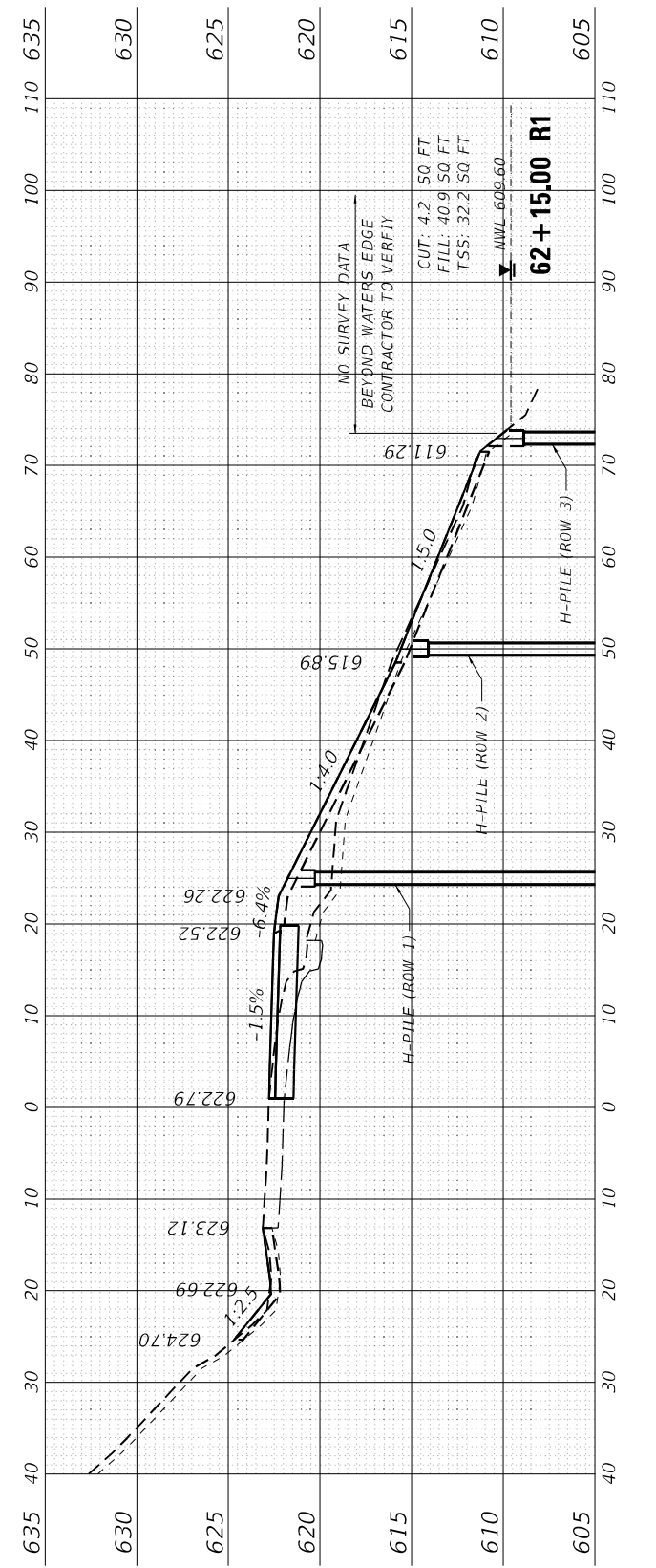
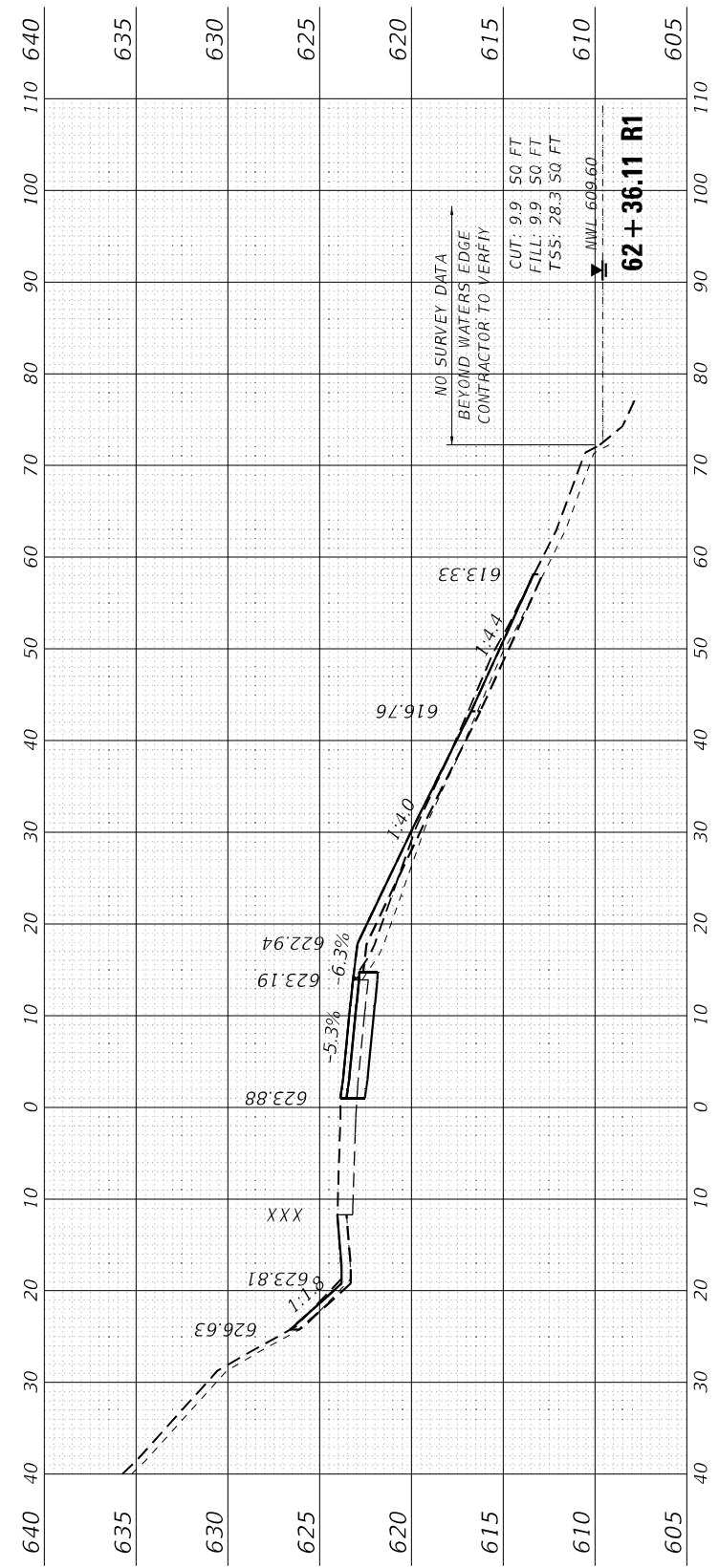
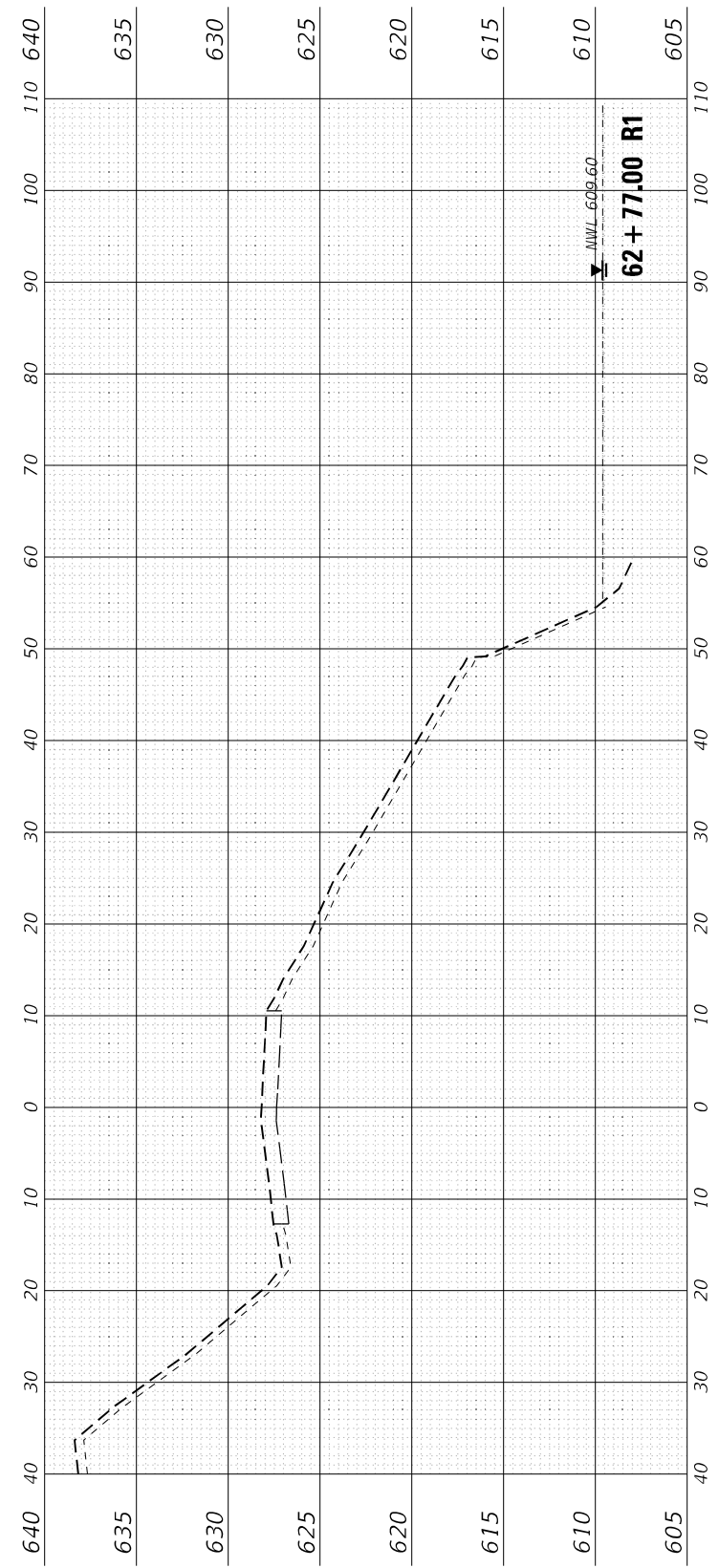
**ARGYLE LAKE STATE PARK - SLOPE FAILURE REPAIR
 CROSS SECTIONS**
 SCALE: H:10 V:5
 SHEET 1 OF 3 SHEETS
 STA. 59+25.00 R1 TO STA. 60+55.67 R1

F.A. RTE.	SECTION	COUNTY	TOTAL SHEETS	SHEET NO.
	ARGYLE LAKE 2021	MCDONOUGH	20	18
			CONTRACT NO. 46929	
		ILLINOIS	FED. AID PROJECT	

FINAL SURVEY	SURVEYED	DATE
NOTE BOOK	PLOTTED	BY
NO.	TEMPLATE	
	AREAS CHECKED	
	AREAS CHECKED	

ORIGINAL SURVEY	SURVEYED	DATE
NOTE BOOK	PLOTTED	BY
NO.	TEMPLATE	
	AREAS CHECKED	
	AREAS CHECKED	

MODEL: D:\chp\...
 FILE NAME: P:\02-1005.11 Argyle Lake State Park\01\01\CAD_Sheets\046929-201-xsect.dgn



**STATE OF ILLINOIS
DEPARTMENT OF TRANSPORTATION**

**ARGYLE LAKE STATE PARK – SLOPE FAILURE REPAIR
CROSS SECTIONS**

SCALE: H:10 V:5 SHEET 3 OF 3 SHEETS STA. 62+15.0 R1 TO STA. 62+77.0 R1

USER NAME	ndp	DESIGNED	NDP	REVISED	-
DRAWN	NDP	CHECKED	BCD	REVISED	-
PLOT SCALE	20,0000 * / In.	DATE	4/1/21	REVISED	-
PLOT DATE	4/1/2021				

F.A. RTE.	SECTION	COUNTY	TOTAL SHEETS	SHEET NO.
	ARGYLE LAKE 2021	MCDONOUGH	20	20
CONTRACT NO. 46929				
ILLINOIS FED. AID PROJECT				



47 South Third Street
 Suite 200
 Geneva, Illinois 60134
 630.322.8877 phone
 www.kaskaskiaeng.com
 Illinois Professional Design Firm
 No. 061-11
 20 588536