

F.A.P. RTE.	SECTION	COUNTY	TOTAL SHEETS	SHEET NO.
D7 UNDERDRAINS 2021-1	ILLINOIS	MOULTRIE	6	1
F.A.P. 320, F.A.P. 758, F.A.S. 642			CONTRACT NO. 74A34	

06-11-2021 LETTING ITEM 257

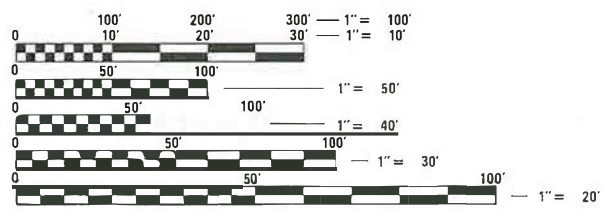
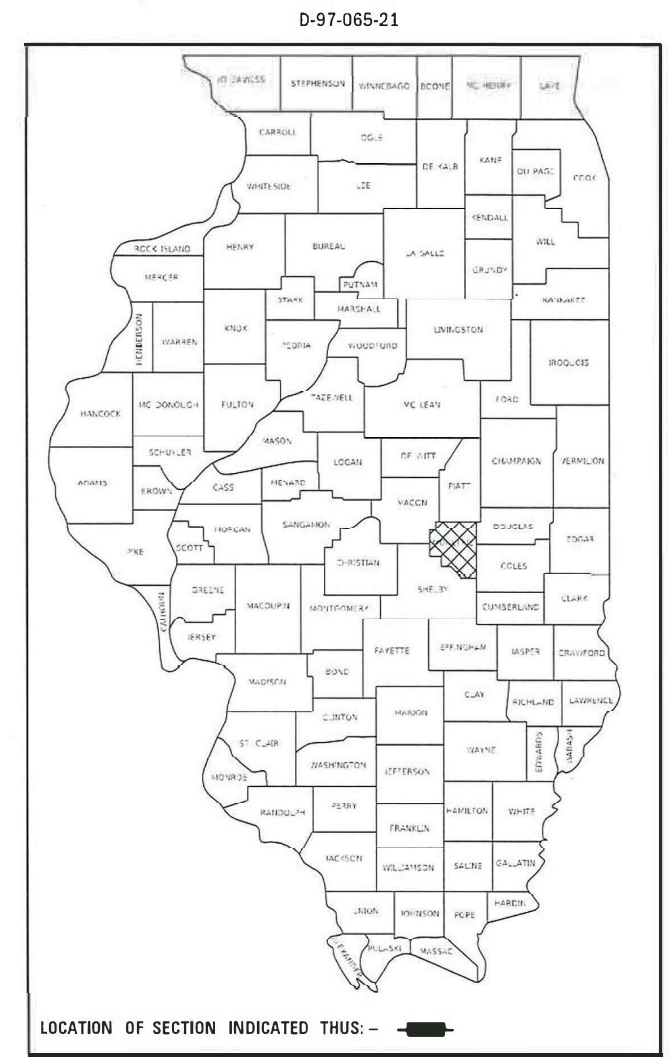
STATE OF ILLINOIS  
DEPARTMENT OF TRANSPORTATION

**PROPOSED  
HIGHWAY PLANS**

FOR INDEX OF SHEETS, SEE SHEET NO. 2  
 ADT = 4650 (2019) IL 121 (NORTH SECTION)  
 ADT = 4800 (2019) IL 121 (SOUTH SECTION)  
 ADT = 2000 (2019) IL 32  
 ADT = 1400 (2020) BRUCE-FINDLAY ROAD

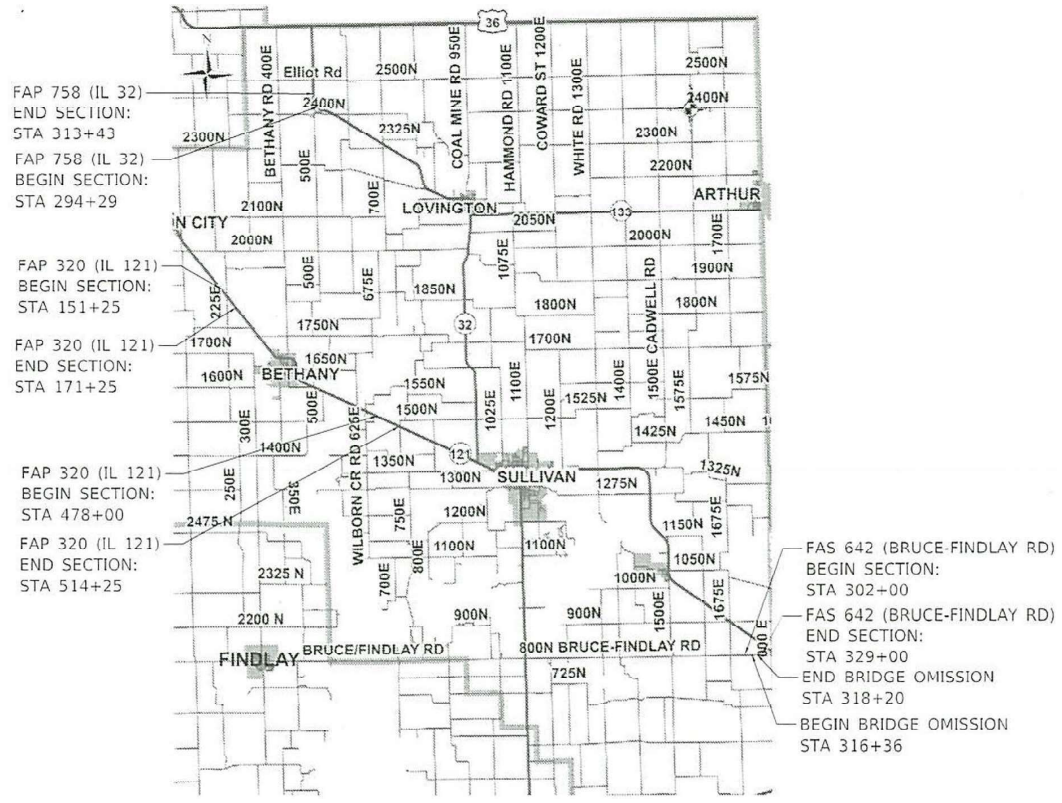
**VARIOUS ROUTES**  
**F.A.P. ROUTE 320 (IL ROUTE 121)**  
**F.A.P. ROUTE 758 (IL ROUTE 32)**  
**F.A.S. ROUTE 642 (BRUCE-FINDLAY ROAD)**  
**SECTION D7 UNDERDRAINS 2021-1**  
**PIPE UNDERDRAINS**  
**MOULTRIE COUNTY**

C-97-118-21



FULL SIZE PLANS HAVE BEEN PREPARED USING STANDARD ENGINEERING SCALES. REDUCED SIZED PLANS WILL NOT CONFORM TO STANDARD SCALES. IN MAKING MEASUREMENTS ON REDUCED PLANS, THE ABOVE SCALES MAY BE USED.

J.U.L.I.E.  
 JOINT UTILITY LOCATION INFORMATION FOR EXCAVATORS  
 1-800-892-0123  
 OR 811



GROSS LENGTH = 10,239.00 FT. = 1.939 MILE  
 NET LENGTH = 10,055.00 FT. = 1.904 MILE

PROJECT ENGINEER BRIAN LEWIS  
 PROJECT MANAGER CHRIS WESTENDORF

CONTRACT NO. 74A34

STATE OF ILLINOIS  
 DEPARTMENT OF TRANSPORTATION

SUBMITTED February 1 20 21

Jeffrey P. Myrick  
 REGIONAL ENGINEER

March 19, 2021  
Scott A. Elk  
 ENGINEER OF DESIGN AND ENVIRONMENT

March 19, 2021  
James J. Gu  
 DIRECTOR OF HIGHWAYS PROJECT IMPLEMENTATION

PRINTED BY THE AUTHORITY  
 OF THE STATE OF ILLINOIS

**INDEX OF SHEETS**

SHEET NO.	ITEM
1	COVER SHEET
2	INDEX OF SHEETS, HIGHWAY STANDARDS AND GENERAL NOTES
3	SUMMARY OF QUANTITIES
4	SCHEDULE OF QUANTITIES
5	TYPICAL CROSS-SECTIONS
6	LOCATION MAPS

THE FOLLOWING STANDARDS ARE A PART OF THESE PLANS AND ARE INCLUDED FOLLOWING THE LAST NUMBERED SHEET OF THE PLANS.

STD. NO.	DESCRIPTION
601001-05	PIPE UNDERDRAINS
601101-02	CONCRETE HEADWALL FOR PIPE UNDERDRAINS
701006-05	OFF ROAD OPERATIONS, 2L, 2W, 15' TO 24" FROM PAVEMENT EDGE
701011-04	OFF ROAD MOVING OPERATIONS, 2L, 2W, DAY ONLY
701201-05	LANE CLOSURE, 2L, 2W, DAY ONLY FOR SPEEDS EQUAL TO OR GREATER THAN 45 MPH
701301-04	LANE CLOSURE, 2L, 2W, SHORT TIME OPERATIONS
701901-08	TRAFFIC CONTROL DEVICES

**GENERAL NOTES**

THIS PROJECT IS LOCATED ON FAP ROUTE 320 (IL 121), FAP ROUTE 758 (IL 32), AND FAS ROUTE 642 (BRUCE-FINDLAY ROAD) IN MOULTRIE COUNTY, INCLUDED IN SECTION D7 UNDERDRAINS 2021-1 IS PIPE UNDERDRAINS AND ANY OTHER WORK NECESSARY TO COMPLETE THE SECTION.

THE FOLLOWING MIXTURE REQUIREMENTS ARE APPLICABLE FOR THIS PROJECT:

FAP 320 (IL 121), FAP 758 (IL 32) & FAS 642 (BRUCE-FINDLAY ROAD)

MIXTURE USE:	SHOULDER REMOVAL AND REPLACEMENT (TOP 1 1/2")
APPLICATION:	HMA SURFACE COURSE, IL-9.5, N70, MIX C
PG GRADE:	PG 64-22
DESIGN AIR VOIDS:	4.0% @ N=70
MIXTURE COMPOSITION:	IL - 9.5
FRICTION AGGREGATE:	MIXTURE C

MIXTURE USE:	SHOULDER REMOVAL AND REPLACEMENT (BOTTOM 6 1/2")
APPLICATION:	HMA BINDER COURSE, IL 19.0, N70
PG GRADE:	PG 64-22
DESIGN AIR VOIDS:	4.0% @ N=70
MIXTURE COMPOSITION:	IL - 19.0
FRICTION AGGREGATE:	N/A

MODEL: Default  
 FILE NAME: p:\pub\harronm.dwg  
 ILLINOIS DOT  
 PROJECT: 74A34  
 CAD: harronm  
 DATE: 2/1/2021  
 DRAWN: steffennk  
 CHECKED: steffennk  
 DESIGNED: steffennk

USER NAME = steffennk	DESIGNED -	REVISED -
	DRAWN -	REVISED -
PLOT SCALE = 100,0000 ' / in.	CHECKED -	REVISED -
PLOT DATE = 2/1/2021	DATE -	REVISED -

**STATE OF ILLINOIS  
DEPARTMENT OF TRANSPORTATION**

**INDEX OF SHEETS &  
GENERAL NOTES**

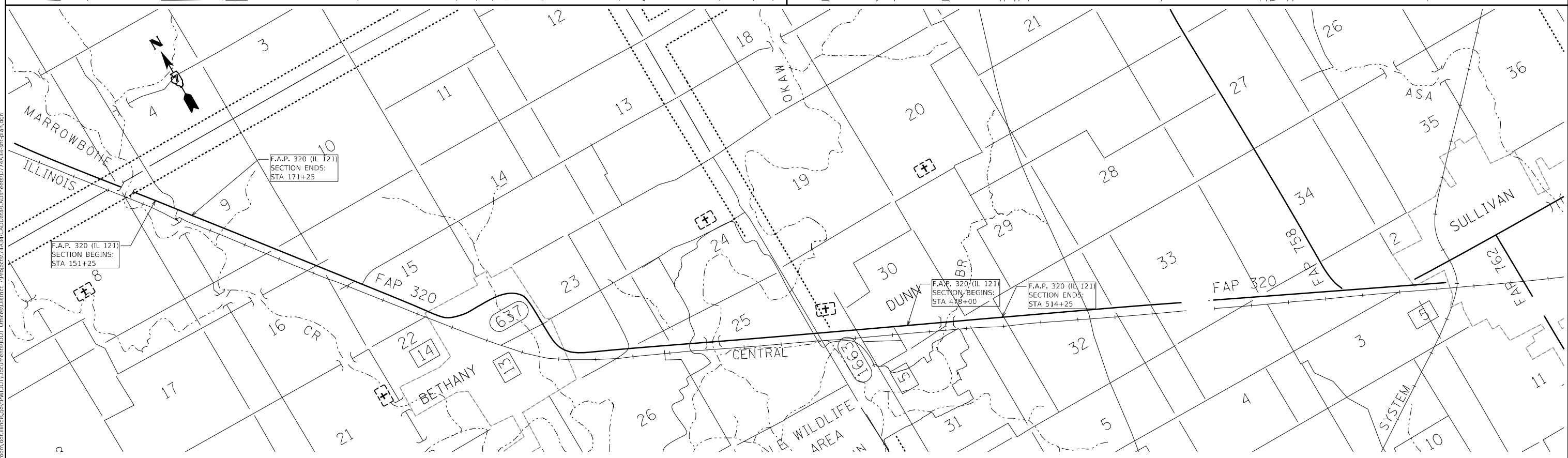
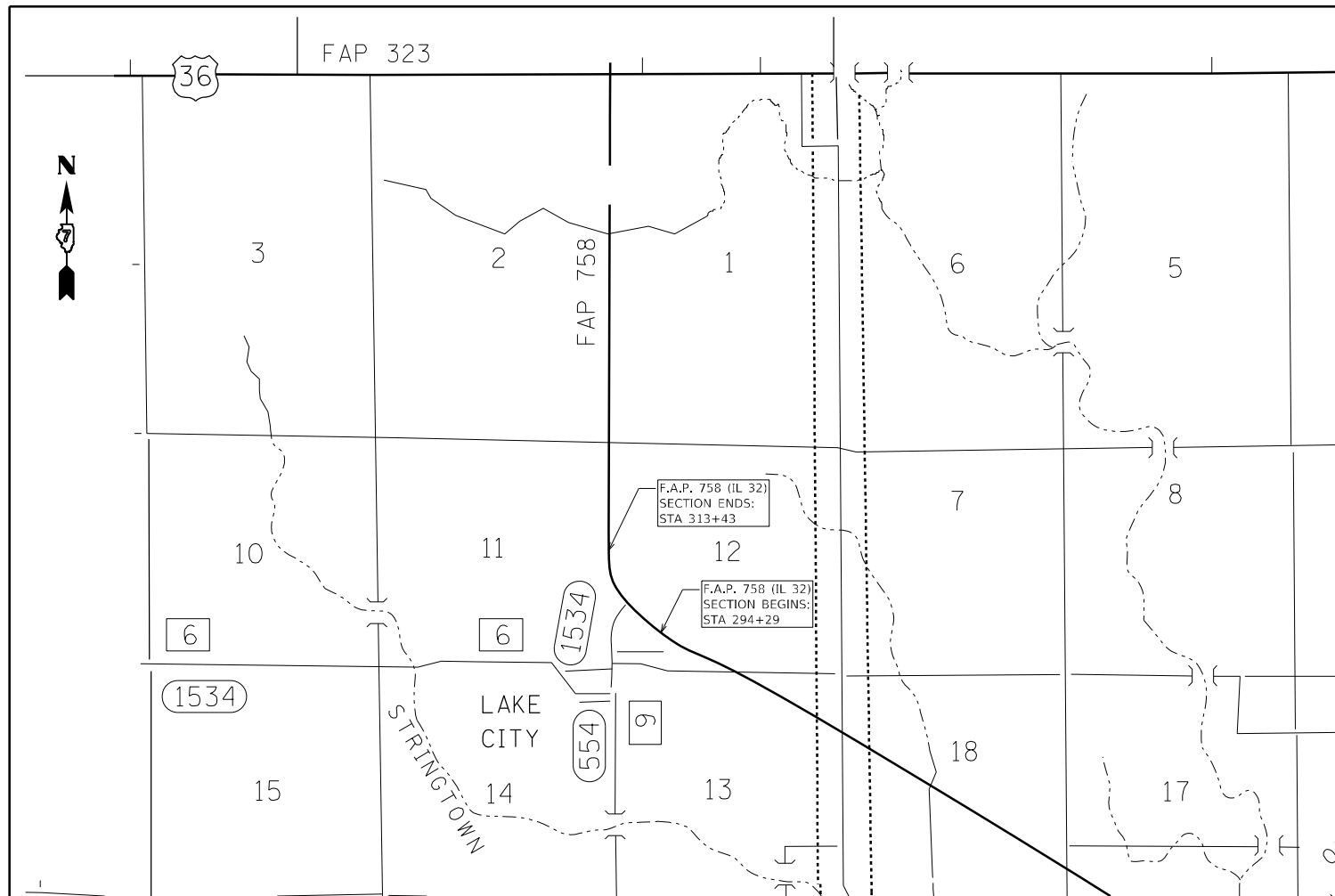
SCALE: SHEET OF SHEETS STA. TO STA.

F.A.* RTE.	SECTION	COUNTY	TOTAL SHEETS	SHEET NO.
~	D7 UNDERDRAINS 2021-1	MOULTRIE	6	2
*F.A.P. 320, F.A.P. 758, F.A.S. 642		CONTRACT NO. 74A34		
ILLINOIS FED. AID PROJECT				









MODEL: Default  
 FILE NAME: p:\pub\harronm.dwg  
 PROJECT: 74434  
 OFFICE: District 7  
 DATE: 2/13/2021

USER NAME = steffenmk	DESIGNED -	REVISED -
	DRAWN -	REVISED -
PLOT SCALE = 1000,0000 ' / in.	CHECKED -	REVISED -
PLOT DATE = 2/13/2021	DATE -	REVISED -

**STATE OF ILLINOIS  
DEPARTMENT OF TRANSPORTATION**

**LOCATION MAPS**

SCALE: SHEET OF SHEETS STA. TO STA.

F.A. RTE.	SECTION	COUNTY	TOTAL SHEETS	SHEET NO.
D7 UNDERDRAINS 2021-1		MOULTRIE	6	6
* F.A.P. 320, F.A.P. 758, F.A.P. 642			CONTRACT NO. 74434	
ILLINOIS FED. AID PROJECT				

NOT TO SCALE