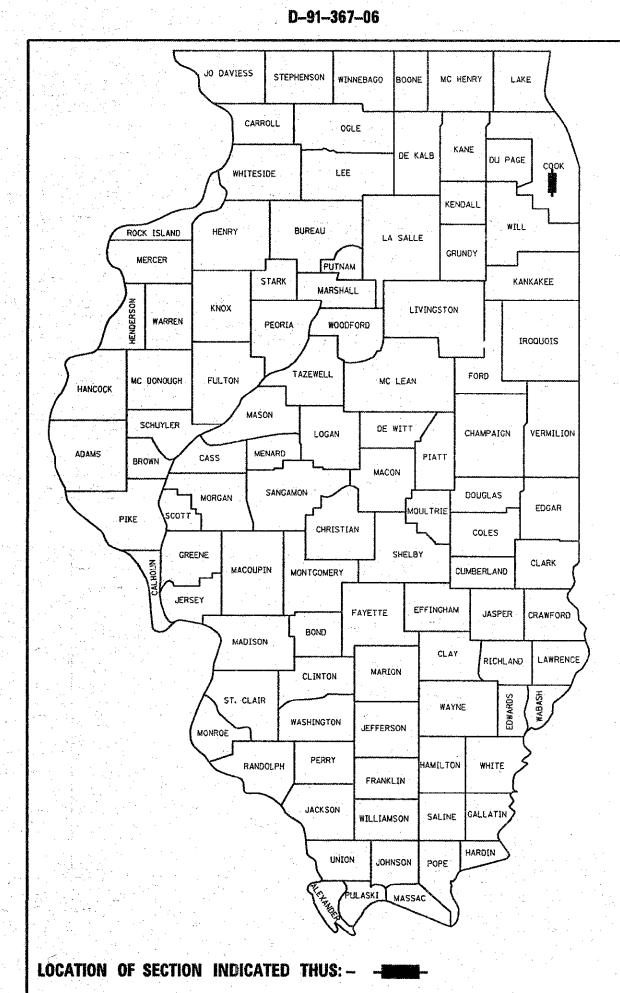


F.A.P. RTE.	SECTION	COUNTY	TOTAL SHEETS	SHEET NO.
350	3321-S-RS	COOK	25	1

STATE OF ILLINOIS
DEPARTMENT OF TRANSPORTATION
DIVISION OF HIGHWAYS

**PROPOSED
HIGHWAY PLANS**

F.A.P. 350: IL. ROUTE 50 (CICERO AVE.)
34TH ST. TO 46TH ST. & AT I-55
SECTION: 3321-S-RS
PROJECT: E5P-0350 (032)
RESURFACING (MAINTENANCE)
COOK COUNTY
C-91-367-06



FOR INDEX OF SHEETS, SEE SHEET NO. 2

THE IMPROVEMENT IS LOCATED IN THE TOWN OF CICERO AND CITY OF CHICAGO

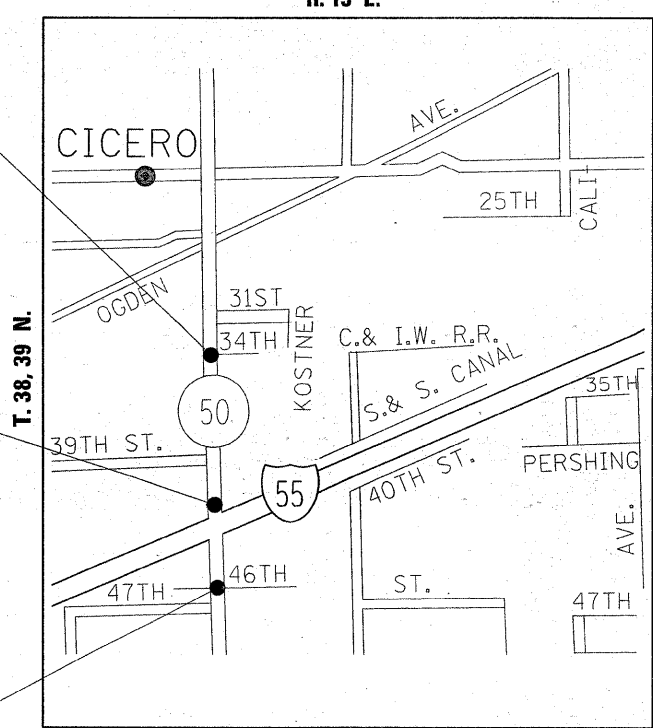
AVERAGE DAILY TRAFFIC
IL. 50, 2007 ADT=50,600

POSTED SPEED LIMIT
IL. 50, 30-35 MPH

IMPROVEMENT ENDS
STA. 508 + 00

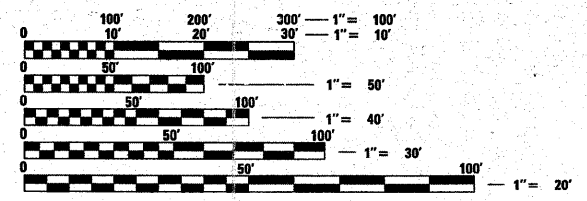
OMISSION
STA. 463 + 00 TO
STA. 466 + 30

IMPROVEMENT BEGINS
STA. 428 + 16



LAKE & WEST TWPS.
LOCATION MAP

GROSS LENGTH OF IMPROVEMENT = 7,984 L.F. (1.512 MILES)
NET LENGTH OF IMPROVEMENT = 7,654 L.F. (1.450 MILES)



FULL SIZE PLANS HAVE BEEN PREPARED USING STANDARD ENGINEERING SCALES. REDUCED SIZED PLANS WILL NOT CONFORM TO STANDARD SCALES. IN MAKING MEASUREMENTS ON REDUCED PLANS, THE ABOVE SCALES MAY BE USED.

J.U.L.I.E.
JOINT UTILITY LOCATION INFORMATION FOR EXCAVATION
1-800-892-0123

CONTRACT NO. 60B54

STATE OF ILLINOIS
DEPARTMENT OF TRANSPORTATION
DIVISION OF HIGHWAYS

SUBMITTED FEBRUARY 5, 20 09
Diana M. O'Keefe
DEPUTY DIRECTOR OF HIGHWAYS, REGION ENGINEER

May 8, 20 09
Charles S. Ingersoll
ENGINEER OF DESIGN AND ENVIRONMENT

May 8, 20 09
Christine M. Reed
DIRECTOR OF HIGHWAYS, CHIEF ENGINEER

PRINTED BY THE AUTHORITY
OF THE STATE OF ILLINOIS

DISTRICT 1 - DESIGN PLAN PREPARATION ENGINEER: KEN ENO/DAN WILGREEN (847) 705-4240