

STATE OF ILLINOIS  
 DEPARTMENT OF TRANSPORTATION  
 DIVISION OF HIGHWAYS

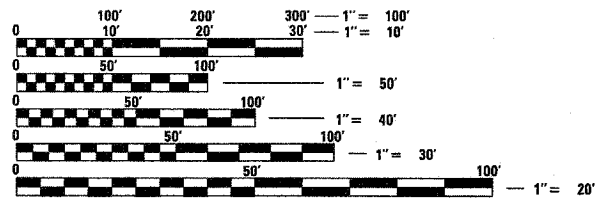
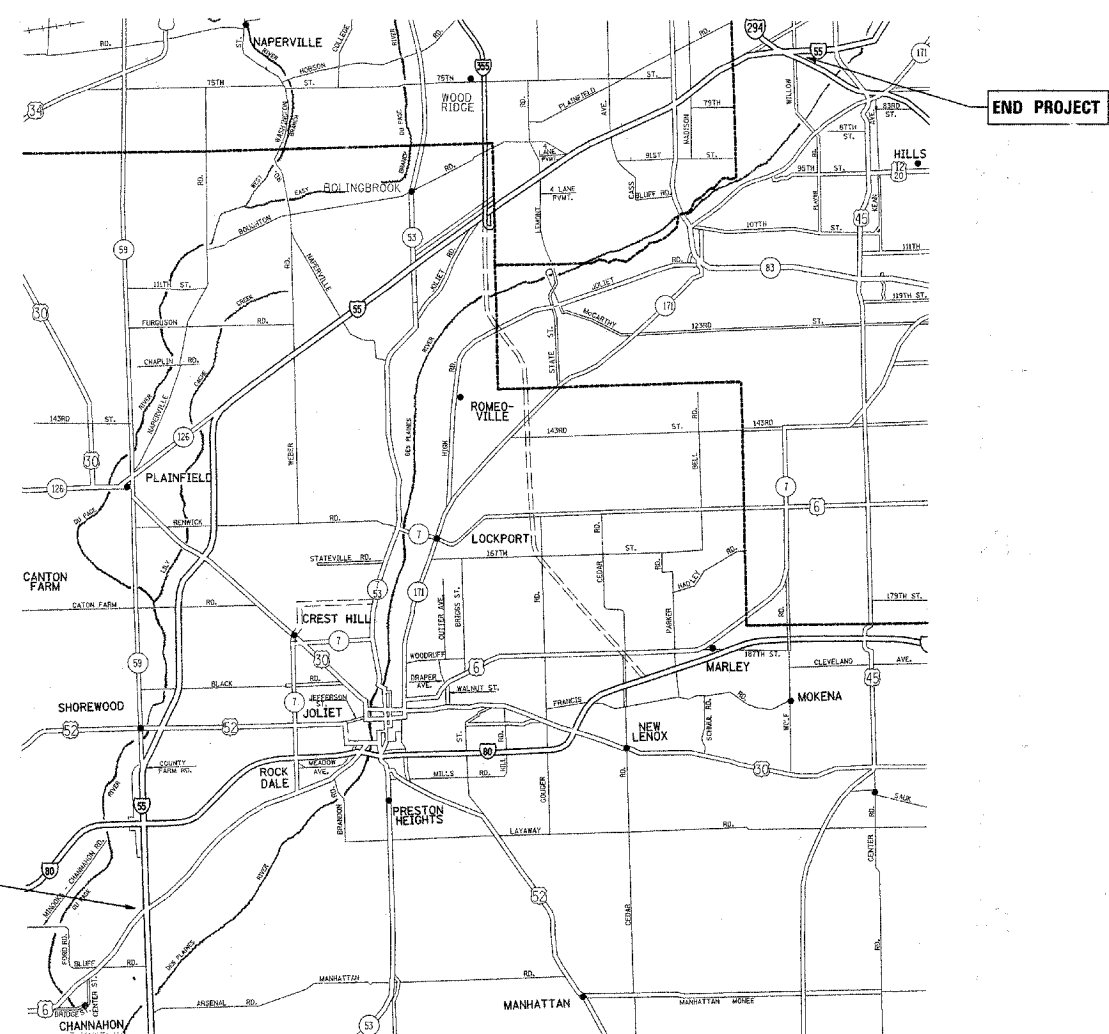
**PROPOSED  
 HIGHWAY PLANS**

FAI ROUTE 55  
 U.S. 6 TO I-294  
 SECTION 2007-062 I  
 CCTV CAMERA EXPANSION  
 WILL, DUPAGE & COOK COUNTY  
 PROJECT: CMI-055-6(236)249  
 C-91-159-08

FOR INDEX OF SHEETS, SEE SHEET NO. 2

F.A.I. RTE.	SECTION	COUNTY	TOTAL SHEETS	SHEET NO.
55	2007-062 I	ILLINOIS	74	1
			CONTRACT NO. 60E01	

\*74+2=76  
 +4=80



FULL SIZE PLANS HAVE BEEN PREPARED USING STANDARD ENGINEERING SCALES. REDUCED SIZED PLANS WILL NOT CONFORM TO STANDARD SCALES. IN MAKING MEASUREMENTS ON REDUCED PLANS, THE ABOVE SCALES MAY BE USED.

J.U.I.E.  
 JOINT UTILITY LOCATION INFORMATION FOR EXCAVATION  
 1-800-892-0123  
 OR 811

PROJECT ENGINEER - ROLAND TOMSONS  
 PROJECT MANAGER - MARK JENKINS

CONTRACT NO. 60E01

STATE OF ILLINOIS  
 DEPARTMENT OF TRANSPORTATION  
 DIVISION OF HIGHWAYS

SUBMITTED MARCH 16, 2009

Diana M. O'Keefe  
 DEPUTY DIRECTOR OF HIGHWAYS, REGION ENGINEER

May 8, 2009  
Charles J. Ingersoll  
 ENGINEER OF DESIGN AND ENVIRONMENT

May 8, 2009  
Christine M. Reed  
 DIRECTOR OF HIGHWAYS, CHIEF ENGINEER

PRINTED BY THE AUTHORITY  
 OF THE STATE OF ILLINOIS