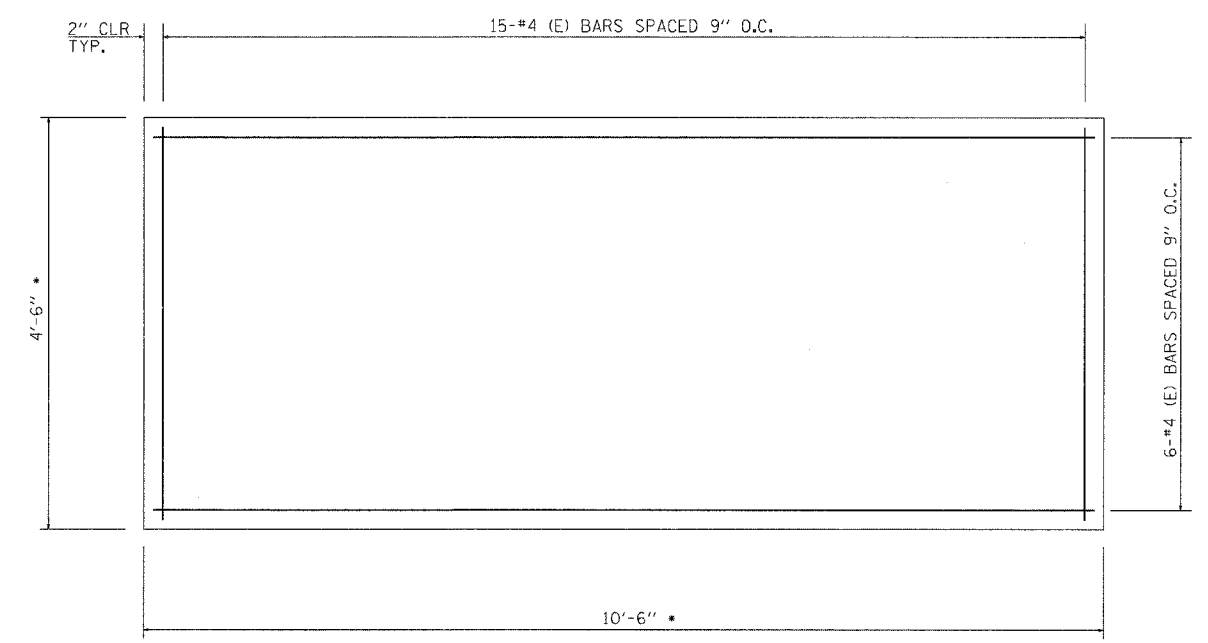
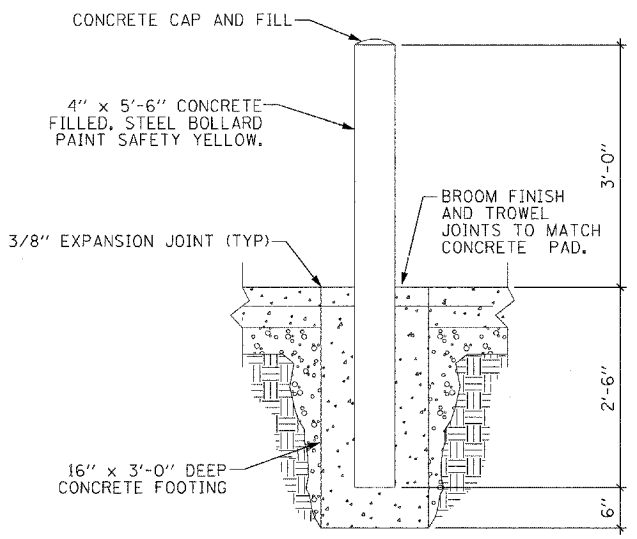


COMMUNICATIONS SHELTER LAYOUT
NOT TO SCALE

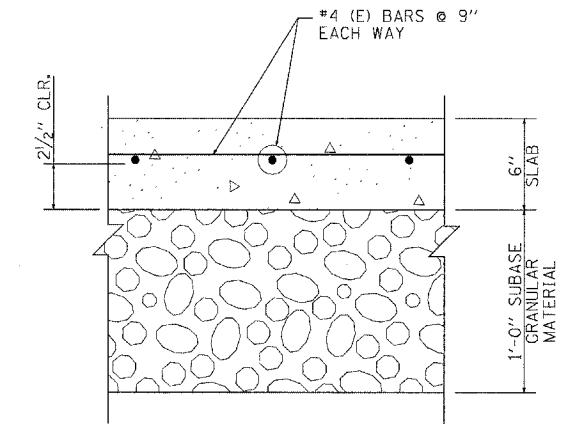


GENERATOR CONCRETE PAD PLAN
f'c = 3500 psi
ALL BARS DESIGNATED "(E)" SHALL BE EPOXY COATED
*DIMENSIONS OF GENERATOR PAD SHALL BE COORDINATED WITH GENERATOR SELECTION



CONCRETE BOLLARD DETAIL
NOT TO SCALE

- NOTES:
1. PROVIDE A COMPLETE AND CONTINUOUS GROUND SYSTEM IN ACCORDANCE WITH THE DRAWINGS AND SPECIFICATIONS.
 2. BOND TO THE INTERIOR GROUND BUS ANY METAL OBJECTS PASSING OR CROSSING WITHIN ONE FOOT OF THE RING. ADDITIONAL GROUNDING IS SITE SPECIFIC AND SHALL BE SHOWN ON INTERIOR ELECTRICAL LAYOUT.
 3. DETAIL SHOWS INSTALLATION IN UNPAVED AREA. WHEN INSTALLING IN A PAVED AREA INCORPORATE GROUND WELL IN THE POUR. (GROUND WELLS SHALL NOT BE INSTALLED IN VEHICULAR TRAFFIC AREAS)
 4. GROUND WELLS ARE REQUIRED AT EVERY GROUND ROD.
 5. WEIGHTS OF ALL FENCE PIPE MEMBERS SHALL MEET THE MINIMUM REQUIREMENTS OF A.S.A. SCHEDULE 40.
 6. BARBED WIRE EXTENSION ARMS SHALL BE ANGLED FROM THE VERTICAL.
 7. GATE JUMPER SHALL BE #4/0 AWG WELDING CABLE OR FLEXIBLE COPPER BRAIDE WITH SLEEVES ON EACH END FOR EXOTHERMIC WELDING.
 8. GATE JUMPER SHALL BE INSTALLED SO THAT IT WILL NOT BE SUBJECTED TO DAMAGING STRAIN WHEN GATE IS FULLY OPEN IN EITHER DIRECTION.



TYPICAL GENERATOR CONCRETE PAD SECTION

FILE NAME =	USER NAME = tomsonsr	DESIGNED -	REVISED - ADDENDUM	STATE OF ILLINOIS DEPARTMENT OF TRANSPORTATION	COMMUNICATIONS SHELTER, 3 OF 3	F.A. RTE.	SECTION	COUNTY	TOTAL SHEETS	SHEET NO.	
c:\pwwork\pwwid01\TOMSONSR\ad0127928\15908-11ght.dgn		DRAWN -	REVISED -			55	2007-0621			73d	
PLOT SCALE = 50.0000' / IN.		CHECKED -	REVISED -			CONTRACT NO. 60E01					
PLOT DATE = 5/13/2009		DATE -	REVISED -			ILLINOIS FED. AID PROJECT * WILL, DUPAGE, COOK					