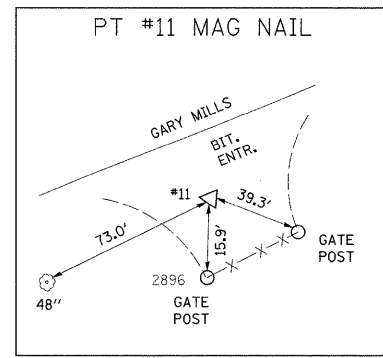
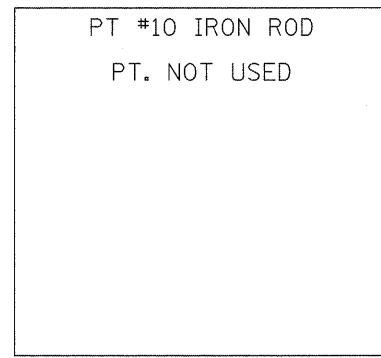
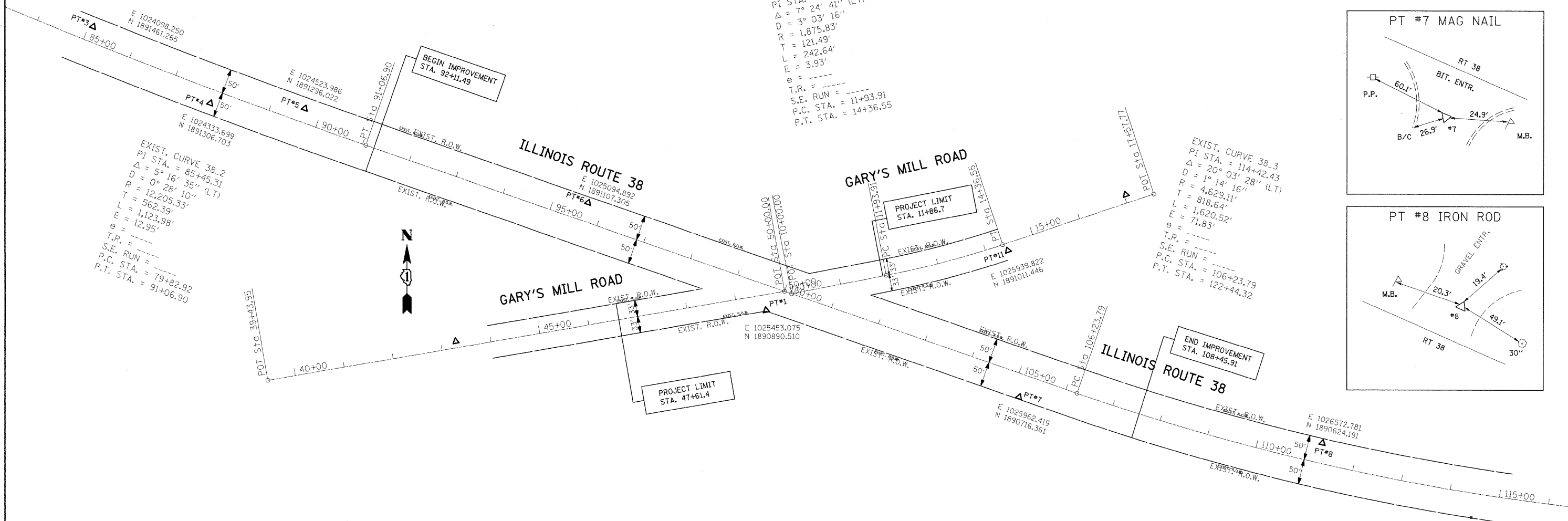


EXIST. CURVE GMN.2
 PI STA. = 13+15.40
 $\Delta = 7^\circ 24' 41''$ (LT)
 $D = 3^\circ 03' 16''$
 $R = 1,875.83'$
 $T = 121.49'$
 $L = 242.64'$
 $E = 3.93'$
 $e = \text{---}$
 $T.R. = \text{---}$
 $S.E. RUN = 11+93.91$
 $P.C. STA. = 14+36.55$
 $P.T. STA. = 14+36.55$

EXIST. CURVE 38.3
 PI STA. = 114+42.43
 $\Delta = 20^\circ 03' 28''$ (LT)
 $D = 1^\circ 14' 16''$
 $R = 4,629.11'$
 $T = 818.64'$
 $L = 1,620.52'$
 $E = 71.83'$
 $e = \text{---}$
 $T.R. = \text{---}$
 $S.E. RUN = \text{---}$
 $P.C. STA. = 106+23.79$
 $P.T. STA. = 122+44.32$

EXIST. CURVE 38.2
 PI STA. = 85+45.31
 $\Delta = 5^\circ 16' 35''$ (LT)
 $D = 0^\circ 28' 10''$
 $R = 12,205.33'$
 $T = 562.39'$
 $L = 1,123.98'$
 $E = 12.95'$
 $e = \text{---}$
 $T.R. = \text{---}$
 $S.E. RUN = \text{---}$
 $P.C. STA. = 79+82.92$
 $P.T. STA. = 91+06.90$



- BM #1 R.R. SPIKE IN W. SIDE
 P.P. 25' ± N.E. OF PT #3
 ELEV. 735.49
- BM #2 X CUT IN NLY. BOLT OF LP.
 @ S.W. CORNER RT 38 & GARY
 MILLS RD. ELEV. = 764.33
- BM #3 8" SPIKE IN P.P. 200' ± E.
 OF PT #8 ELEV. = 755.35

