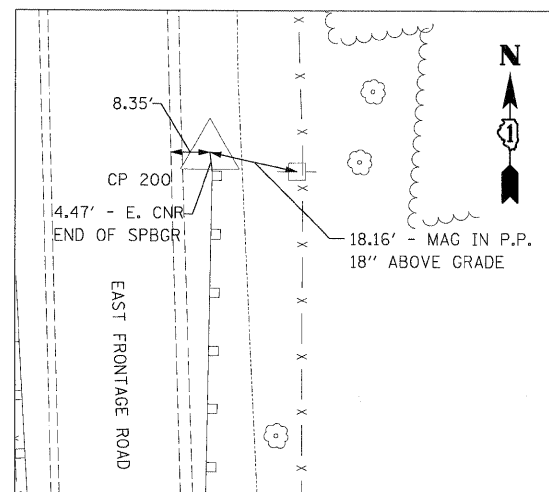
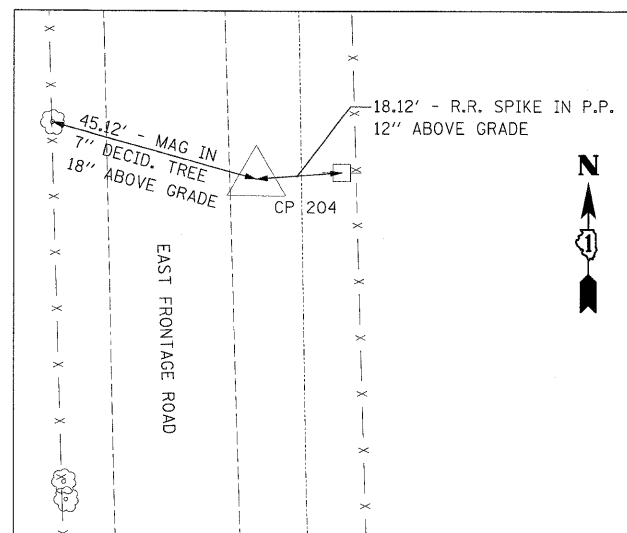


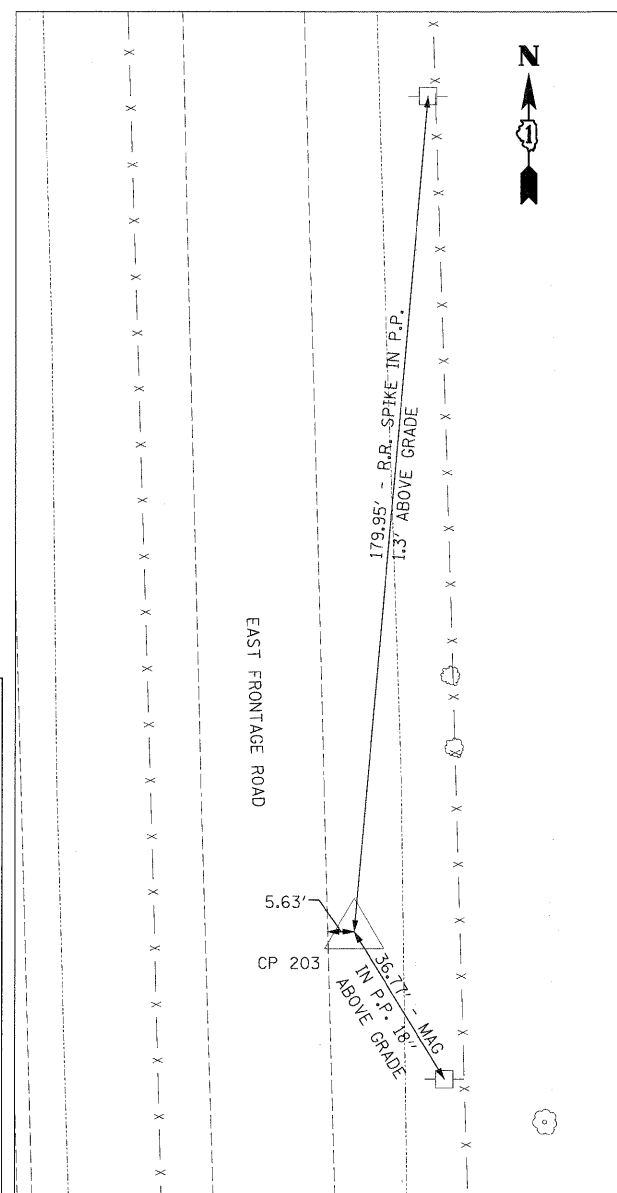
CP 100
 N 1719505.47
 E 1022731.40
 STA 5972+45.40
 OFF 19.66' RT
 ELEV 519.86



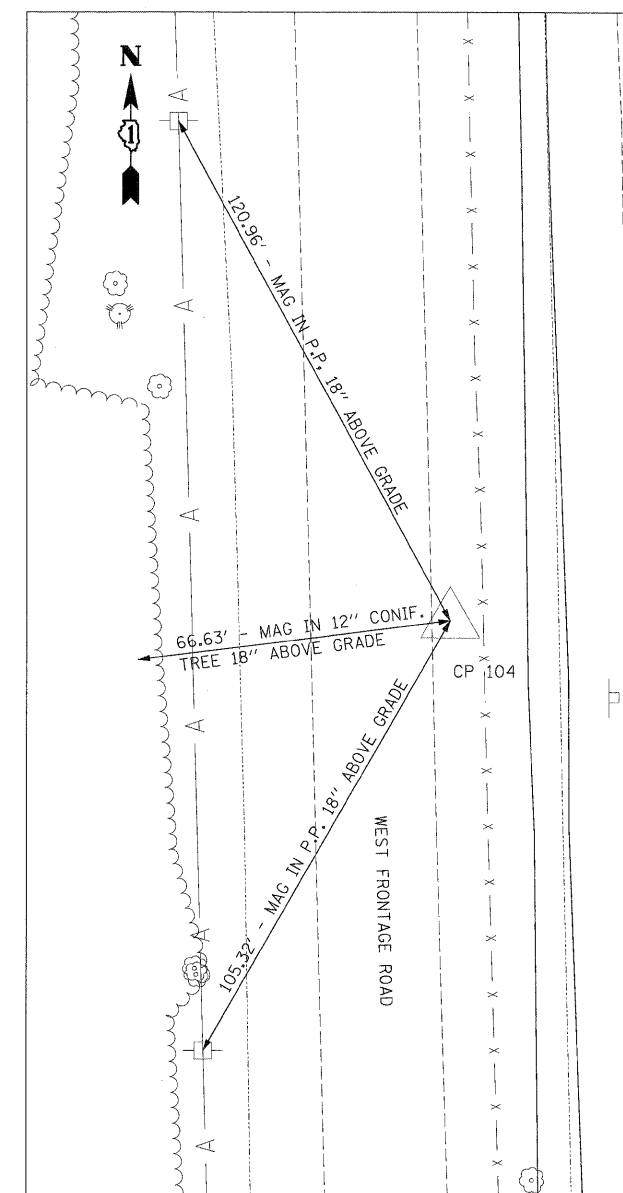
N: 1719631.86
 E: 1022949.65
 STA: 856+85.98
 OFF: 21.54' RT
 ELEV: 518.31
CP 200



N 1721913.30
 E 1022884.65
 STA 879+68.30
 OFF 18.89' RT
 ELEV 531.90
CP 204



N 1721313.17
 E 1022900.33
 STA 873+69.97
 OFF 18.04' RT
 ELEV 530.15
CP 203



N 1721904.47
 E 1022663.03
 STA 5996+45.37
 OFF 16.96' RT
 ELEV 530.11
CP 104

BENCHMARKS

J247	NGS MONUMENT G 247, PID MF 0335, BENCH MARK DISK SET IN TOP OF CONCRETE. ELEV=531.030	BM 7	RR SPIKE IN E SIDE OF POWER POLE ±6.5' TALL AT THE SOUTH EDGE OF A POND ON THE E SIDE OF E FRONTAGE ROAD BETWEEN CPT'S 214 & 215. ELEV=556.123	BM 14	RR SPIKE IN 1ST POWER POLE NORTH OF CPT 106, W SIDE OF W FRONTAGE ROAD. ELEV=531.466
BM 2962	DISK IN CONCRETE N OF GUARDRAIL E SIDE OF FRONTAGE ROAD ON E SIDE OF I-55. STAMPED US DEPT OF AGRICULTURE FOREST SERVICE T33N R9E PLS2962 2002. ELEV=522.830	BM 8	DISK IN CONCRETE ±125' N OF ENTRANCE TO EXXON MOBILE OFFICE BUILDING AT THE E SIDE OF FRONTAGE ROAD, CONC. CYLINDER ± 16" ABOVE GROUND. ELEV=552.297	BM 15	RR SPIKE IN 1ST POWER POLE N OF DOW CHEMICAL PLANT GATE G ON W SIDE OF W FRONTAGE ROAD. ELEV=524.023
BM RR	TOP OF CONCRETE ROW MARKER N SIDE OF BLODGETT RD, W SIDE OF RR TRACKS, ± 1'N OF POWER POLE. ELEV=522.750	BM 9	BOX CUT ON S CORNER OF TRAFFIC HANDHOLE FOUNDATION AT THE SE CORNER OF ARSENAL ROAD AND E FRONTAGE ROAD. ELEV 545.485	BM 16	DISK IN NE WINGWALL OF W FRONTAGE ROAD BRIDGE OVER GRANT CREEK STAMPED US COAST & GEODETIC SURVEY BENCHMARK G247 1960 (MF 1197). ELEV=521.450
BM 1	BOX CUT AT TOP OF SE WINGWALL OF GRANT CREEK BRIDGE ON E FRONTAGE RD OF I-55. ELEV=520.800	BM 10	RR SPIKE IN 2ND POWER POLE EAST OF E FRONTAGE ROAD, N SIDE OF ARSENAL ROAD ±1' S OF FENCE. ELEV=539.808		
BM 2	RR SPIKE IN 1ST POWER POLE N OF CPT 203 ±1' ABOVE GROUND. ELEV=529.734	BM 11	RR SPIKE IN 2ND POWER POLE WEST OF I-55 SOUTHBOUND ENTRANCE RAMP AT N SIDE OF ARSENAL ROAD, ±1' N OF GUARDRAIL. ELEV=549.615		
BM 3	RR SPIKE IN 2ND POWER POLE N OF CPT 205 ±1' ABOVE GROUND. ELEV=531.047	BM 12	GUTTER NAIL IN 1ST POWER POLE NORTH OF DURKEE ROAD (NORTH BRANCH), W SIDE OF W FRONTAGE ROAD. ELEV=545.042		
BM 4	RR SPIKE IN 2ND POWER POLE N OF CPT 207 ±1' ABOVE GROUND. ELEV=534.690	BM 13	GUTTER NAIL IN POWER POLE N SIDE OF GATE B ENTRANCE TO DOW CHEMICAL PLAN, W SIDE OF W FRONTAGE ROAD. ELEV=540.800		
BM 5	RR SPIKE IN 1ST POWER POLE N OF CPT 210 ±1' ABOVE GROUND. ELEV=538.174				
BM 6	BOX CUT IN TOP OF CONCRETE CULVERT AT S SIDE OF CONTRACATOR'S GATE A ON E SIDE OF E FRONTAGE ROAD. ELEV=543.997				

McDonough Associates Inc.
 Engineers / Architects
 130 East Randolph Street, Chicago, Illinois 60601

FILE NAME =	USER NAME = TKLuegel	DESIGNED - TRK	REVISED -
D:\6071-SHT-AT803.dgn		DRAWN - TRK	REVISED -
		CHECKED - DLT	REVISED -
		DATE - 03/20/09	REVISED -

STATE OF ILLINOIS
 DEPARTMENT OF TRANSPORTATION

ALIGNMENTS, TIES, AND BENCHMARKS

SCALE: 1"=20' SHEET NO. 3 OF 7 SHEETS STA. TO STA.

F.A.I. RTE.	SECTION	COUNTY	TOTAL SHEETS	SHEET NO.
55	99-2HB-2-R	WILL	171	16
CONTRACT NO. 60F71				
FED. ROAD DIST. NO. 1 ILLINOIS FED. AID PROJECT				