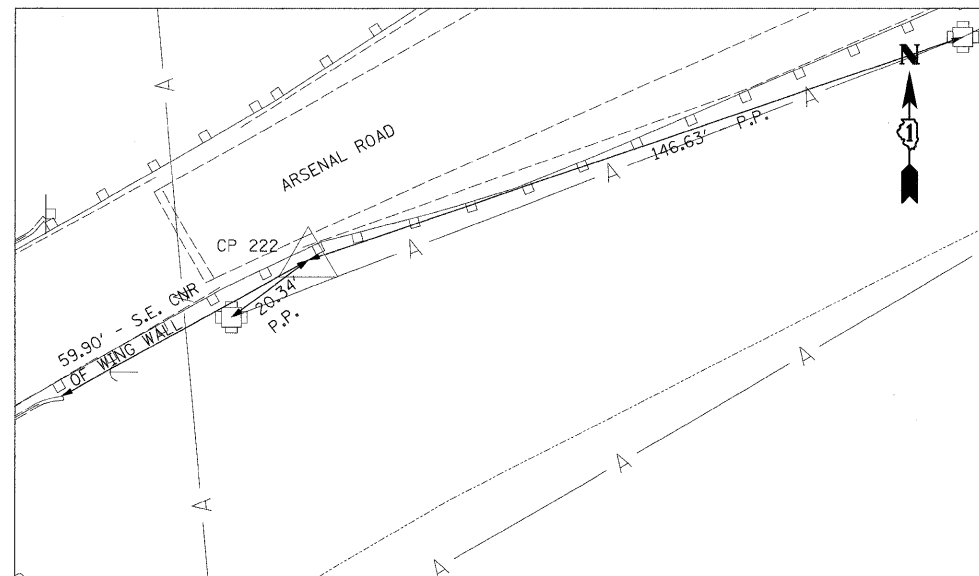
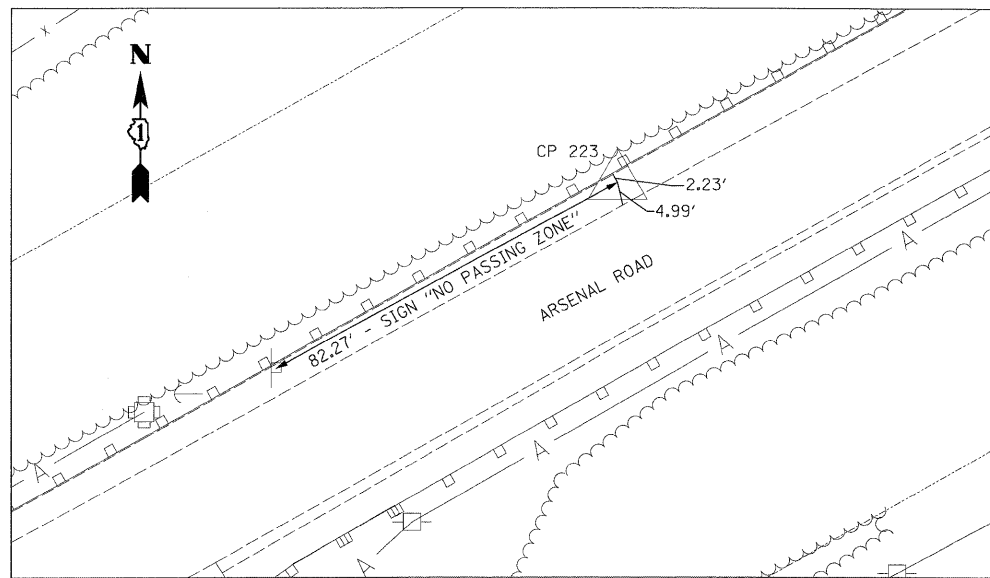


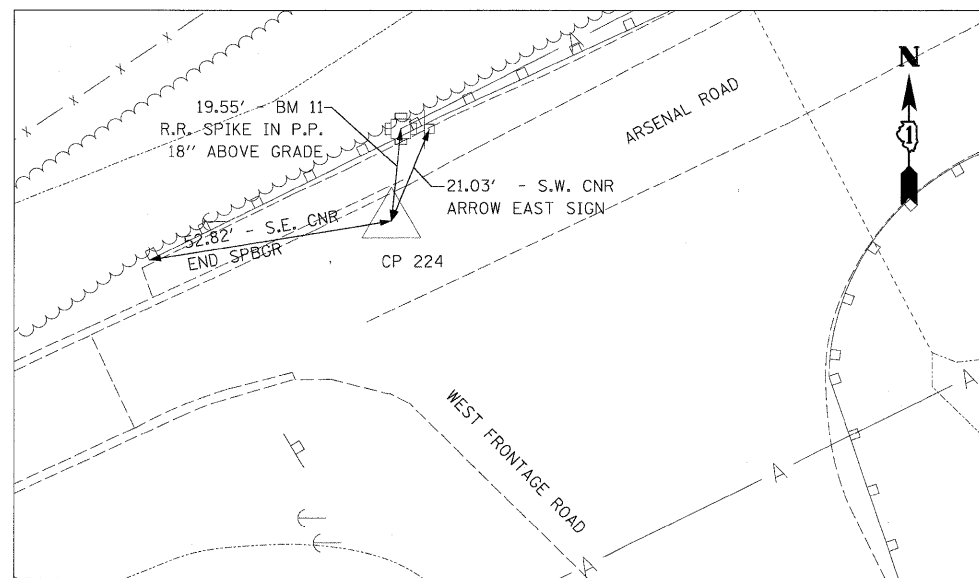
CP 221
 N 1731085.79
 E 1022939.09
 STA 971+78.92
 OFF 15.90' LT
 ELEV 555.27



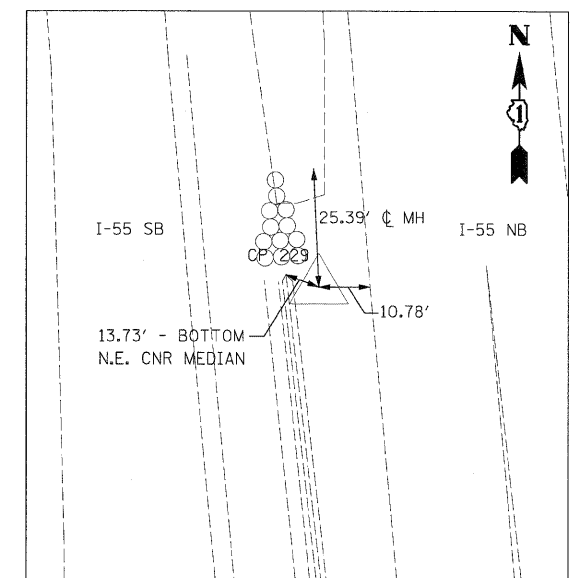
CP 222
 N 1730819.15
 E 1022538.84
 STA 966+99.21
 OFF 18.37' RT
 ELEV 563.33



CP 223
 N 1730560.56
 E 1022013.06
 STA 961+14.30
 OFF 16.35' LT
 ELEV 561.29



CP 224
 N 1730315.32
 E 1021579.16
 STA 956+15.41
 OFF 4.51' LT
 ELEV 548.19



CP 229
 N 1730548.23
 E 1022385.77
 STA 1115+48.28
 OFF 9.44' RT
 ELEV 544.72

McDonough Associates Inc.
 Engineers / Architects
 130 East Randolph Street, Chicago, Illinois 60601

FILE NAME = D:\6071-SHT-ATB07.dgn	USER NAME = TKIuegel	DESIGNED - TRK	REVISED -
		DRAWN - TRK	REVISED -
	PLOT SCALE = 1:20	CHECKED - DLT	REVISED -
	PLOT DATE = 3/28/2009	DATE - 03/20/09	REVISED -

**STATE OF ILLINOIS
 DEPARTMENT OF TRANSPORTATION**

ALIGNMENTS, TIES, AND BENCHMARKS

SCALE: 1"=20' SHEET NO. 7 OF 7 SHEETS STA. TO STA.

F.A.T. RTE.	SECTION	COUNTY	TOTAL SHEETS	SHEET NO.
55	99-2HB-2-R	WILL	171	20
FED. ROAD DIST. NO. 1 ILLINOIS FED. AID PROJECT			CONTRACT NO. 60F71	

FINAL