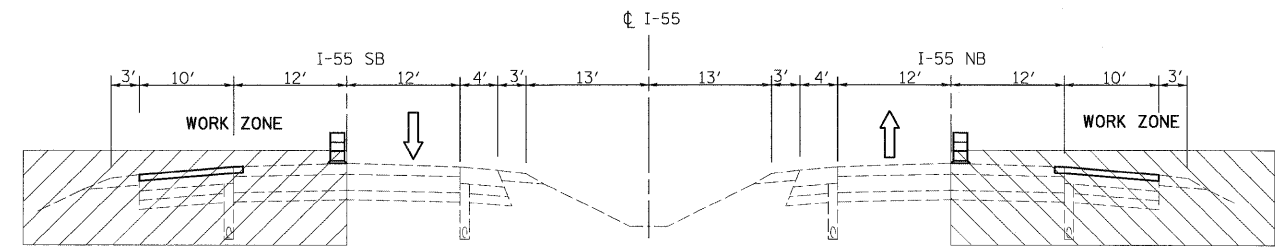
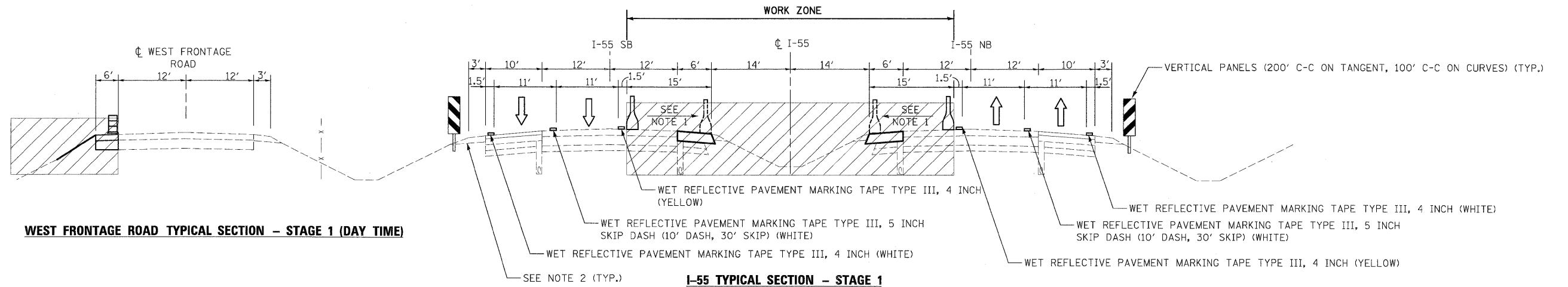


I-55 TYPICAL SECTION - PRE-STAGE (DAY TIME) OR PEAK HOURS



I-55 TYPICAL SECTION - PRE-STAGE (NIGHT TIME) OR OFF-PEAK

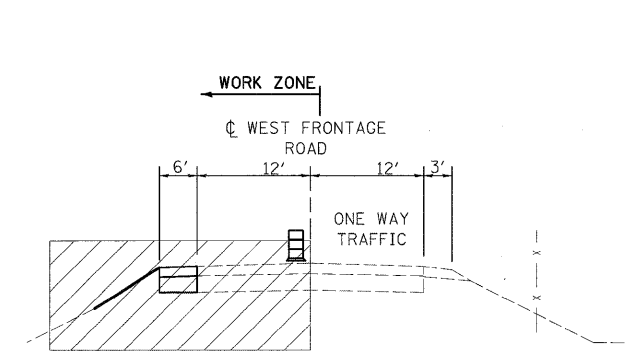
NOTE:
A 4" DIFFERENTIAL IN THE PAVEMENT SURFACE WILL BE ALLOWED FOR NO MORE THAN 24 HOURS.
THE CONTRACTOR SHALL ONLY REMOVE IN ONE DAYS WORKING PERIOD WHAT CAN BE REPLACED IN THE FOLLOWING DAYS WORKING PERIOD. A 4" DIFFERENTIAL SHALL NOT BE ALLOWED OVER A WEEKEND OR THROUGH A HOLIDAY PERIOD.



WEST FRONTAGE ROAD TYPICAL SECTION - STAGE 1 (DAY TIME)

I-55 TYPICAL SECTION - STAGE 1

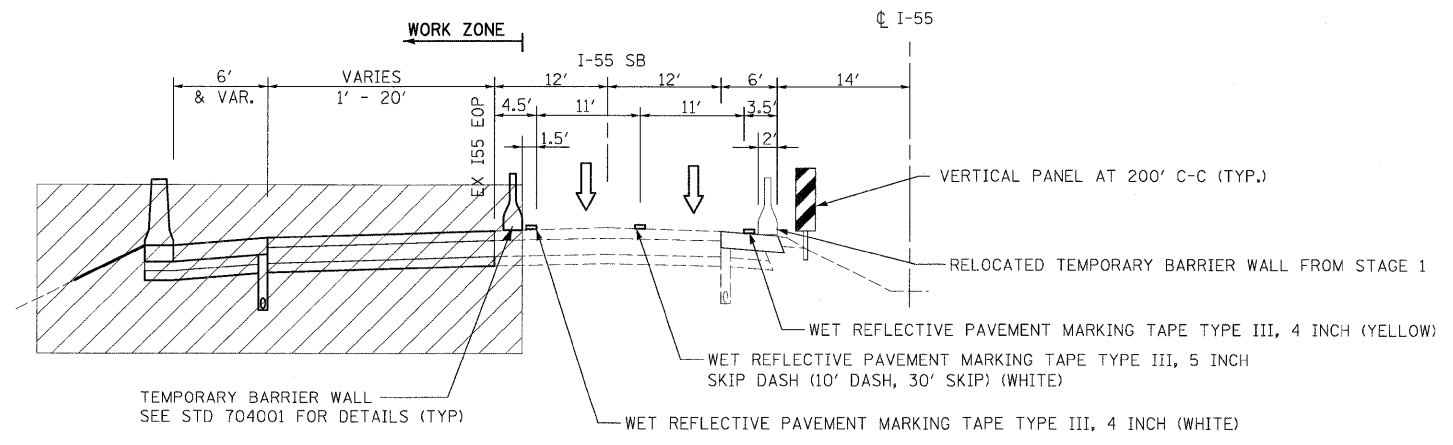
NOTE 1: RELOCATE TEMPORARY BARRIER WALL, STATE OWNED AFTER STAGE 1 TO BE USED IN FUTURE CONTRACTS
NOTE 2: AGGREGATE WEDGE SHOULDER, TYPE B SHALL BE PLACED PRIOR TO IMPLEMENTATION OF STAGE 1.



WEST FRONTAGE ROAD TYPICAL SECTION - STAGE 1

LANE CLOSURE WITH FLAGGERS

NIGHT TIME OR OFF-PEAK



I-55 / RAMP D TYPICAL SECTION - STAGE 2

FOR LEGEND SEE SHEET MT-1

McDonough Associates Inc.
Engineers / Architects
130 East Randolph Street Chicago, Illinois 60601

FILE NAME = D160F71-SHT-STAGING02.dgn	USER NAME = TKluegel	DESIGNED - TRK	REVISED -	STATE OF ILLINOIS DEPARTMENT OF TRANSPORTATION	MAINTENANCE OF TRAFFIC TYPICAL SECTIONS	F.A.I. RTE. 55	SECTION 99-2HB-2-R	COUNTY WILL	TOTAL SHEETS 171	SHEET NO. 43
PLOT SCALE = 1:10	CHECKED - DLT	REVISIED -	REVISIED -			SCALE: N.T.S.	SHEET NO. 2 OF X SHEETS	STA. TO STA.	CONTRACT NO. 60F71	
PLOT DATE = 3/19/2009	DATE - 03/20/09	REVISIED -	REVISIED -			FED. ROAD DIST. NO. 1 ILLINOIS FED. AID PROJECT				

FINAL
MN-2