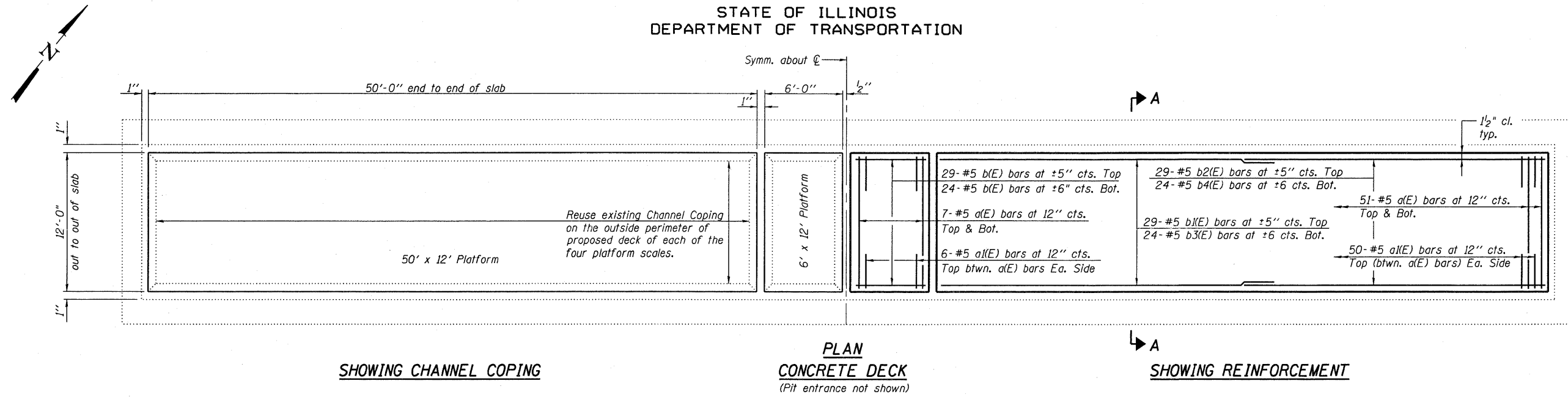


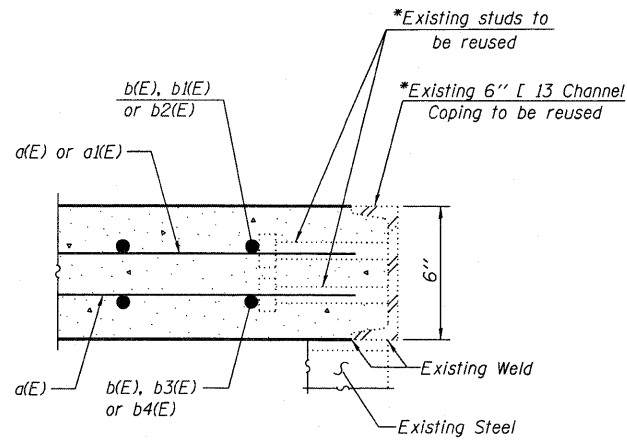
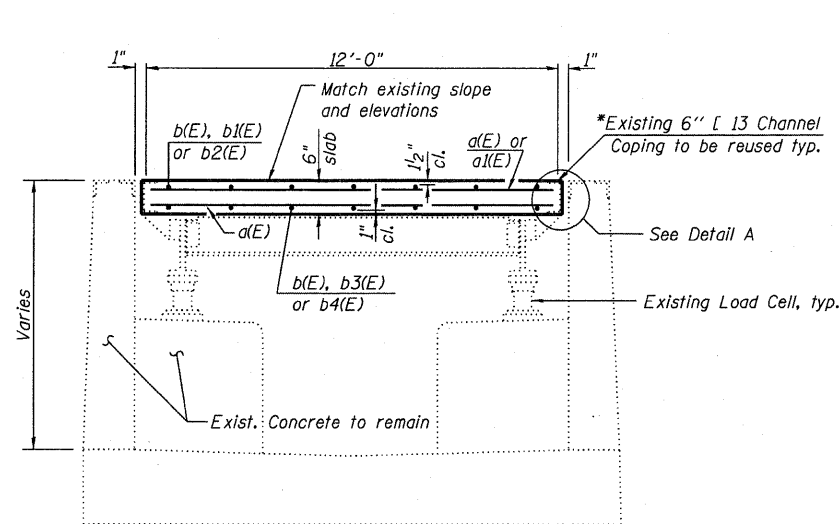
STATE OF ILLINOIS  
DEPARTMENT OF TRANSPORTATION



**MIN. BAR LAP**  
#5 Bar = 2'-2"

**BILL OF MATERIAL**

| Bar                              | No. | Size    | Length  | Shape |
|----------------------------------|-----|---------|---------|-------|
| a(E)                             | 232 | #5      | 11'-9"  | —     |
| a(E)                             | 224 | #5      | 2'-9"   | —     |
| b(E)                             | 106 | #5      | 5'-9"   | —     |
| b(E)                             | 58  | #5      | 29'-1"  | —     |
| b2(E)                            | 58  | #5      | 22'-10" | —     |
| b3(E)                            | 48  | #5      | 27'-1"  | —     |
| b4(E)                            | 48  | #5      | 24'-10" | —     |
| Protective Coat                  |     | Sq. Yd. | 150     |       |
| Conc. Superstructure             |     | Cu. Yd. | 25      |       |
| Reinforcement Bars, Epoxy Coated |     | Pound   | 9860    |       |



Note A:  
\*The Contractor has the option to remove the existing channel coping (with existing studs) which is welded to the existing steel and replace it with new channel coping (with new studs). If the Contractor chooses to do this, the Bureau of Bridges and Structures shall be contacted for weld information, the Contractor shall take care not to damage the existing steel which is to be reused, and there shall be no extra cost to the Department.  
The cost of removing, cleaning, painting and reinstalling the existing coping channels shall be included with the cost of Removal of Existing Concrete Deck.

**NOTE:**  
See Sheets 6 and 7 of 7 for approach and ramp pavement details.

**CONCRETE DECK PLAN AND DETAILS**  
**BOLINGBROOK WEIGH STATION (NB)**

|                |
|----------------|
| DESIGNED - JSD |
| CHECKED - RWC  |
| DRAWN - GJS    |
| CHECKED - RWC  |

**LOCHNER**

H.W. LOCHNER, INC.  
CONSULTING ENGINEERS & PLANNERS  
20 NORTH WACKER DRIVE SUITE 1200  
CHICAGO, IL 60606

|                         |             |            |                           |              |           |
|-------------------------|-------------|------------|---------------------------|--------------|-----------|
| SHEET NO. 4<br>7 SHEETS | F.A.I. RTE. | SECTION    | COUNTY                    | TOTAL SHEETS | SHEET NO. |
|                         | 55          | 2009-017 I | WILL                      | 16           | 7         |
| FED. ROAD DIST. NO. 1   |             |            | ILLINOIS FED. AID PROJECT |              |           |
| CONTRACT NO. 60G16      |             |            |                           |              |           |