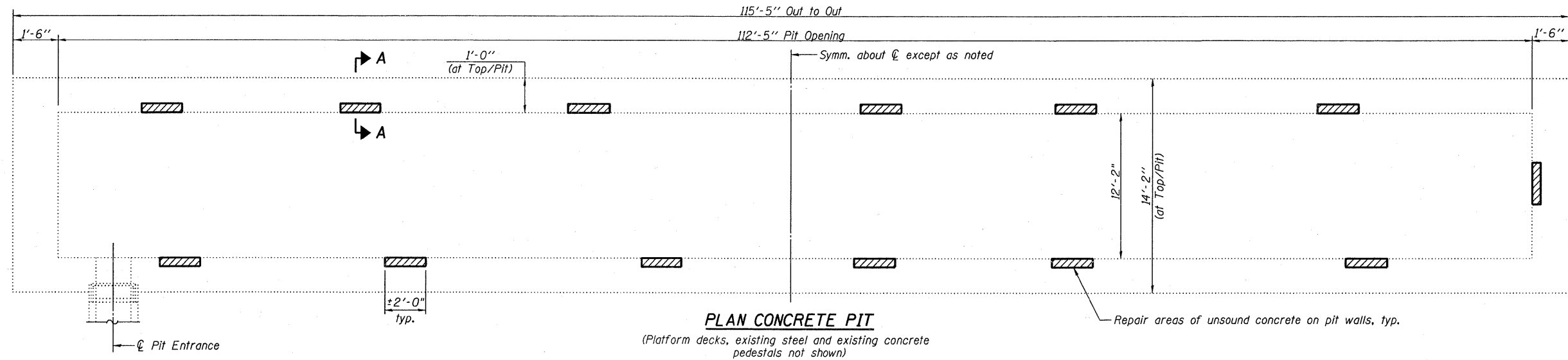
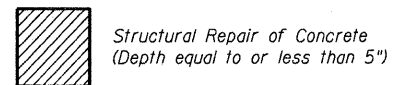


STATE OF ILLINOIS  
DEPARTMENT OF TRANSPORTATION



**BILL OF MATERIAL**

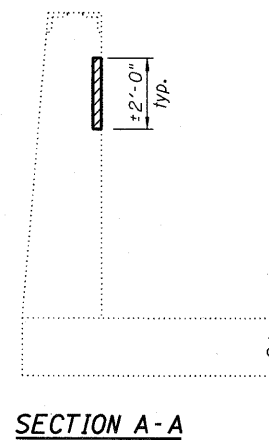
Item	Unit	Total
Structural Repair of Concrete (Depth equal to or less than 5")	Sq. Ft.	52



**NOTE**

The Engineer shall determine the extent and location of repairs in the field. An estimated quantity has been provided. Such variations shall not be cause for additional compensation for a change in the scope of work; however, the Contractor will be paid for the quantity actually furnished based upon the unit price bid for the work.

**CONCRETE PIT REPAIR DETAILS  
BOLINGBROOK WEIGH STATION (NB)**



DESIGNED - JSD
CHECKED - RWC
DRAWN - GJS
CHECKED - RWC

**LOCHNER**  
H.W. LOCHNER, INC.  
CONSULTING ENGINEERS & PLANNERS  
20 NORTH WACKER DRIVE SUITE 1200  
CHICAGO, IL 60606

SHEET NO. 5 7 SHEETS	F.A.I. RTE.	SECTION	COUNTY	TOTAL SHEETS	SHEET NO.
	55	2009-017 I	WILL	16	8
CONTRACT NO. 60G16					
FED. ROAD DIST. NO. 1 ILLINOIS FED. AID PROJECT					

T:\2801 - BBS Structural Services\Struct\dgn\60G16-005.dgn