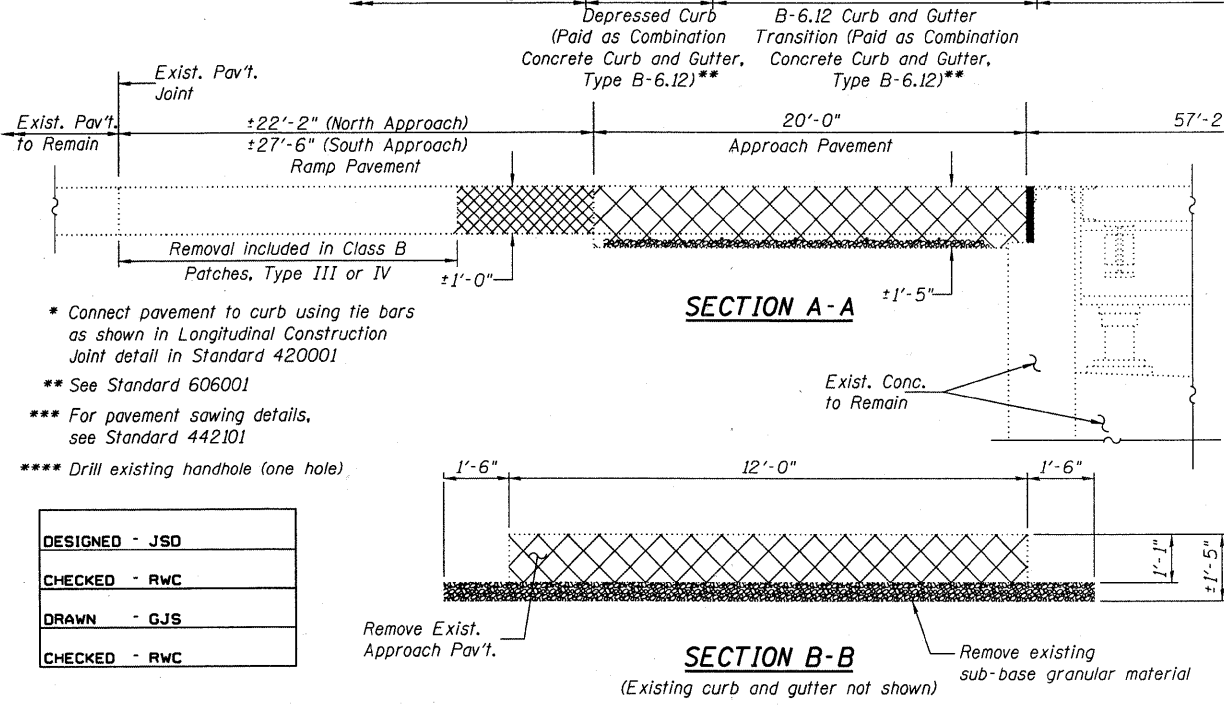
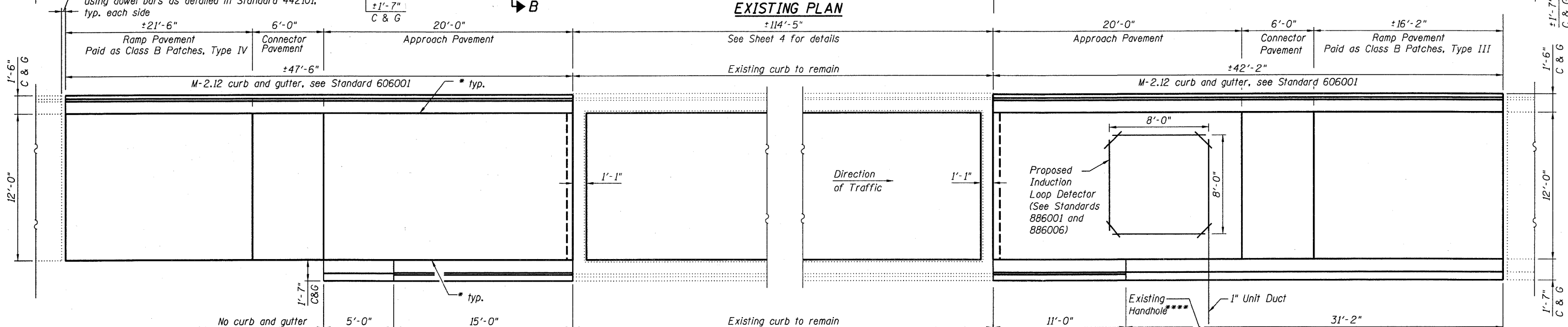
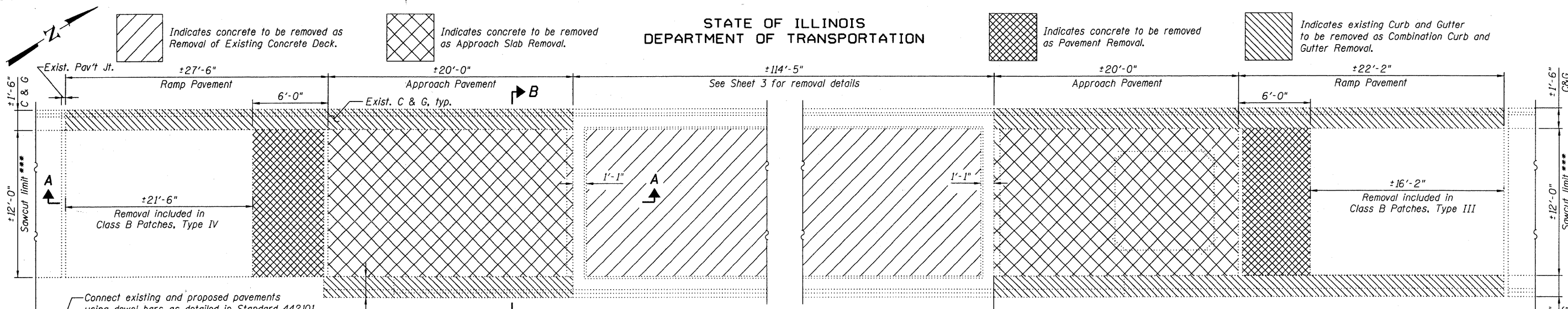


STATE OF ILLINOIS
DEPARTMENT OF TRANSPORTATION



PROPOSED PLAN

NOTES:

- See Sheet 7 of 7 for Proposed Approach Pavement Details and Bill of Material.
- Type III and Type IV Patches shall be reinforced with pavement fabric according to details shown in Standard 420701.
- The details shown assume that the Connector Pavement and Ramp Pavement will be poured in the same pour. If Contractor elects to use more than one pour, tie bars are required as shown in Standard 420001. This shall not be cause for additional compensation for a change in the scope of work.
- Seeding, Mulch and Fertilizer quantities assume a maximum 0.1 acre of area will require re-seeding.
- See Sheet 1 of 7 for Bill of Material and General Notes regarding removal and replacement of material behind curb and gutter to be removed and replaced.

BILL OF MATERIAL

Item	Unit	Total	Item	Unit	Total
Seeding, Class 2A	Acre	0.1	Combination Concrete Curb and Gutter, Type M-2.12	Foot	90
Nitrogen Fertilizer Nutrient	Pound	9	Electric Cable in Conduit, Lead-in, No. 14 1 Pair	Foot	90
Phosphorus Fertilizer Nutrient	Pound	9	Drill Existing Handhole	Each	1
Potassium Fertilizer Nutrient	Pound	9	Induction Loop Detector Amplifier	Each	1
Mulch, Method 2	Acre	0.1	Detector Loop, Type I	Foot	34
Stabilized Sub-base 4"	Sq. Yd.	73	Aggregate Subgrade 12"	Sq. Yd.	83
Protective Coat	Sq. Yd.	120	Dowel Bars 1/2"	Each	20
Pavement Removal	Sq. Yd.	16	Tie Bars 3/4"	Each	79
Combination Curb and Gutter Removal	Foot	153			
Approach Slab Removal	Sq. Yd.	54			
Class B Patches, Type III, 12"	Sq. Yd.	22			
Class B Patches, Type IV, 12"	Sq. Yd.	29			
Pavement Fabric	Sq. Yd.	51			
Saw Cuts	Foot	24			
Combination Concrete Curb and Gutter, Type B-6.12	Foot	63			

**APPROACH AND RAMP PAVEMENT REMOVAL
PLAN AND DETAILS
BOLINGBROOK WEIGH STATION (NB)**

LOCHNER
H.W. LOCHNER, INC.
CONSULTING ENGINEERS & PLANNERS
20 NORTH WACKER DRIVE SUITE 1200
CHICAGO, IL 60606

SHEET NO. 6	F.A.I. RTE.	SECTION	COUNTY	TOTAL SHEETS	SHEET NO.
7 SHEETS	55	2009-017 I	WILL	16	9
CONTRACT NO. 60G16					
FED. ROAD DIST. NO. 1 ILLINOIS FED. AID PROJECT					

t:\2801 - bbs structural services\struct\dgn\60G16-006.dgn

DESIGNED - JSD
CHECKED - RWC
DRAWN - GJS
CHECKED - RWC