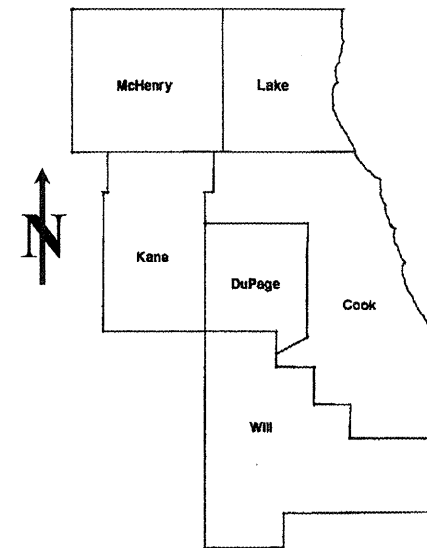


ROUTE	SECTION	COUNTY	TOTAL SHEETS	SHEET NUMBER
VARIOUS	2009-027 PP	COOK & WILL	20	1

STATE OF ILLINOIS
DEPARTMENT OF TRANSPORTATION
DIVISION OF HIGHWAYS
DISTRICT ONE
PROPOSED HIGHWAY PLANS

CONTRACT NO. 60G26

D-91-357-09




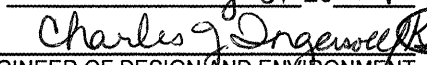
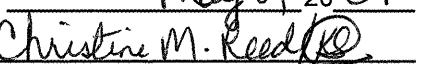
LOCATION OF IMPROVEMENT INDICATED THUS:

VARIOUS ROUTES
 SECTION: 2009-027 PP
 VARIOUS INTERSTATE MAINLINE
 PAVEMENT PATCHING
 COOK & WILL COUNTIES
 C-91-357-09

FOR INDEX OF SHEETS SEE SHEET 2

CONTRACT NO. 60G26

DISTRICT ONE - DESIGN - PLAN PREPARATION ENGINEER:
 KEN ENG / (847) 705-4247

STATE OF ILLINOIS DEPARTMENT OF TRANSPORTATION DIVISION OF HIGHWAYS
SUBMITTED: <u>MARCH 24, 2009</u>  DEPUTY DIRECTOR OF HIGHWAYS, REGION ENGINEER
<u>May 8, 2009</u>  ENGINEER OF DESIGN AND ENVIRONMENT
<u>May 8, 2009</u>  DIRECTOR, DIVISION OF HIGHWAYS

PRINTED BY THE AUTHORITY
OF THE STATE OF ILLINOIS

J.U.L.I.E.: JOINT UTILITY LOCATION
INFORMATION FOR EXCAVATION
(312) 744-7000

INDEX OF SHEETS

<u>SHEET NO.</u>	<u>DESCRIPTION</u>
1	TITLE SHEET
2	INDEX OF SHEETS, STATE STANDARDS AND GENERAL NOTES
3	SUMMARY OF QUANTITIES
4	GENERAL LOCATION MAP
5	SUMMARY OF PATCHING SCHEDULE
6-14	PATCHING SCHEDULE
15	BUTT JOINT AND HMA TAPER DETAILS
16	FREEWAY ENTRANCE AND EXIT RAMP CLOSURE DETAILS
17	FREEWAY SINGLE & MULTI-LANE WEAVE
18-19	MULTI-LANE FREEWAY PAVEMENT MARKING DETAILS
20	FREEWAY SHOULDER CLOSURES AND PARTIAL RAMP CLOSURES

STATE STANDARDS

<u>STANDARD NO.</u>	<u>DESCRIPTION</u>
000001-05	TYPICAL SYMBOLS, ABBREVIATIONS AND PATTERNS
701101-02	OFF-RD. OPERATIONS, MULTILANE
701400-03	APPROACH TO LANE CLOSURE, FREEWAY/EXPRESSWAY
701401-05	LANE CLOSURE, FREEWAY/EXPRESSWAY
701411-05	LANE CLOSURE, MULTILANE, AT ENTRANCE OR EXIT RAMP
701426-03	LANE CLOSURE, MULTILANE, INTERMITTENT OR MOVING OPERATION
701446-01	TWO LANE CLOSURE, FREEWAY/EXPRESSWAY
701901-01	TRAFFIC CONTROL DEVICES

HOT-MIX ASPHALT MIXTURE REQUIREMENTS

MIXTURE TYPE	AC TYPE	AIR VOIDS (%)
HOT-MIX ASPHALT SURFACE COURSE, MIX "D", N90 (IL 9.5MM), 2"	PG 64-22	4% @ 90 GYR

THE UNIT WEIGHT USED TO CALCULATE ALL HOT-MIX ASPHALT SURFACE MIXTURE QUANTITIES IS 112 LBS/SY/IN.

GENERAL NOTES

BEFORE STARTING ANY EXCAVATION, THE CONTRACTOR SHALL CALL "JULIE" AT (800) 892-0123 OR 811 FOR FIELD LOCATIONS OF BURIED ELECTRIC, TELEPHONE AND GAS FACILITIES. (48 HOUR NOTIFICATION REQUIRED)

BEFORE STARTING ANY EXCAVATION, THE CONTRACTOR SHALL CALL "C.U.A.N." (CHICAGO UTILITY ALERT NETWORK) AT (312) 744-7000 FOR FIELD LOCATIONS OF BURIED ELECTRIC, TELEPHONE AND GAS UTILITIES (48 HOUR NOTIFICATION IS REQUIRED).

THE CONTRACTOR WILL NOT BE ALLOWED TO SET UP A YARD OR FIELD OFFICE ON STATE (OR TOLLWAY) PROPERTY WITHOUT WRITTEN PERMISSION FROM THE DEPARTMENT (OR ISTHA).

WHEN ARTIFICIAL LIGHTING IS UTILIZED IN NIGHT OPERATIONS, THE CONTRACTOR SHALL EXERCISE THE UTMOST PRECAUTIONS IN PREVENTING ADVERSE VISABILITY TO THE MOTORING PUBLIC AND ADJOINING RESIDENTIAL AREAS.

ANY PAVEMENT MARKINGS AND RAISED REFLECTIVE PAVEMENT MARKERS OBLITERATED BY MILLING AND RESURFACING OPERATIONS ON SIDE STREETS AND ENTRANCES SHALL BE REPLACED AND PAID FOR IN KIND.

BEFORE BEGINNING ANY WORK, THE CONTRACTOR SHALL RETAIN AND RECORD FOR FUTURE REFERENCE, ALL EXISTING PAVEMENT MARKING LINES (AND RAISED REFLECTIVE PAVEMENT MARKERS) IN ORDER THAT THESE LOCATIONS CAN BE RE-ESTABLISHED FOR STRIPING. EXACT LOCATIONS OF ALL PAVEMENT MARKINGS SHALL BE AS DIRECTED BY THE ENGINEER.

ALL PAVEMENT PATCHING LOCATIONS WILL BE DETERMINED IN THE FIELD BY THE ENGINEER.

THE CONTRACTOR SHALL CONTACT THE DISTRICT ONE TRAFFIC CONTROL SUPERVISOR AT (847) 705-4155 A MINIMUM OF 72 HOURS IN ADVANCE OF BEGINNING WORK.

THE ENGINEER SHALL CONTACT MS. PATRICE HARRIS, AREA TRAFFIC FIELD ENGINEER AT (708) 597-9800 MINIMUM OF TWO (2) WEEKS PRIOR TO PLACEMENT OF PERMANENT PAVEMENT MARKINGS.

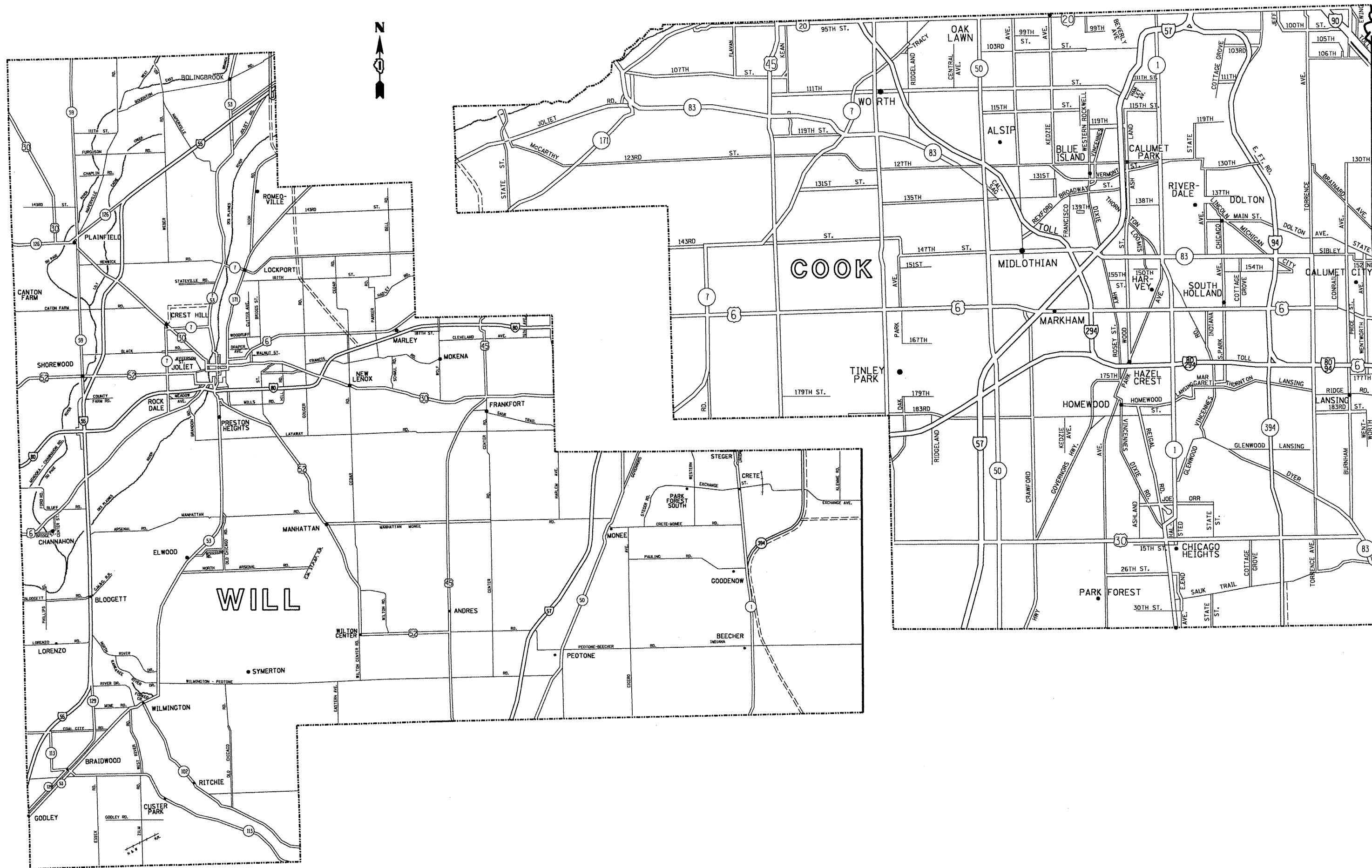
THE EXISTING ROADWAY TYPICAL SECTION FOR HOT-MIX ASPHALT SURFACES IS ASSUMED TO HAVE A 3 INCH HOT-MIX ASPHALT OVERLAY ON TOP OF A TEN INCH CONCRETE BASE. THE EXISTING ROADWAY TYPICAL SECTION FOR CONCRETE SURFACES IS ASSUMED TO BE 10 INCHES OF FULL DEPTH PORTLAND CEMENT CONCRETE PAVEMENT.

ALL PAVEMENT PATCHES ON HOT-MIX ASPHALT SURFACES SHOWN IN THE PLANS ARE TO BE TWO (2) INCH MILL AND RESURFACE ONLY. THE MINIMUM WIDTH FOR MILLING AND PATCHING SHALL BE TWO (2) FEET. ALL PAVEMENT PATCHES ON CONCRETE SURFACES ARE TO BE 10 INCH CLASS D PATCHES.

THE COST OF ANY PARTIAL OR FULL DEPTH PATCHING REQUIRED AFTER THE REMOVAL OF THE EXISTING 2 INCH HOT-MIX ASPHALT SURFACE SHALL BE PAID FOR IN ACCORDANCE WITH ARTICLE 109.04 OF THE STANDARD SPECIFICATIONS.

FILE NAME =	USER NAME = WILGREENDP	DESIGNED -	REVISED -	STATE OF ILLINOIS DEPARTMENT OF TRANSPORTATION	INDEX OF SHEETS, STATE STANDARDS AND GENERAL NOTES	F.A. RTE.	SECTION	COUNTY	TOTAL SHEETS	SHEET NO.
as:\ph_work\PWIDOT\WILGREENDP\0125109\Design.dgn	DRAWN -	REVISED -	VAR.			2009-027 PP	COOK & WILL	20	2	
PLOT SCALE = 100.0000' / IN.	CHECKED -	REVISED -	CONTRACT NO. 60C26							
PLOT DATE = 3/19/2009	DATE -	REVISED -	FED. ROAD DIST. NO. 1 ILLINOIS FED. AID PROJECT							
		SCALE:			SHEET NO. OF SHEETS STA. TO STA.					

SUMMARY OF QUANTITIES			URBAN TOTAL QUANTITIES	CONSTRUCTION TYPE CODE					SUMMARY OF QUANTITIES			TOTAL QUANTITIES	CONSTRUCTION TYPE CODE				
CODE NO	ITEM	UNIT		COOK COUNTY 1000	WILL COUNTY 1000					CODE NO	ITEM		UNIT				
40600200	BITUMINOUS MATERIALS (PRIME COAT)	TON	13	5	8												
40600300	AGGREGATE (PRIME COAT)	TON	61	23	38												
40600400	MIXTURE FOR CRACKS, JOINTS, AND FLANGEWAYS	TON	91	34	57												
40600895	CONSTRUCTING TEST STRIP	EACH	1	0.4	0.6												
40600982	HOT-MIX ASPHALT SURFACE REMOVAL - BUTT JOINT	SO YD	1515	567	948												
40603345	HOT-MIX ASPHALT SURFACE COURSE, MIX "D", N90	TON	3393	1267	2126												
44000157	HOT-MIX ASPHALT SURFACE REMOVAL, 2"	SO YD	30289	11298	18991												
67000400	ENGINEER'S FIELD OFFICE, TYPE A	CAL MO	6	2	4												
67100100	MOBILIZATION	L SUM	1	0.4	0.6												
70300530	PAVEMENT MARKING TAPE, TYPE III 5"	FOOT	13395	4822	8573												
70301000	WORK ZONE PAVEMENT MARKING REMOVAL	SO FT	5807	2090	3717												
*78000200	THERMOPLASTIC PAVEMENT MARKING - LINE 4"	FOOT	51159	18417	32742												
*78004220	PREFORMED PLASTIC PAVEMENT MARKING, TYPE B - INLAID - LINE 5"	FOOT	13395	4822	8573												
*78100100	RAISED REFLECTIVE PAVEMENT MARKER	EACH	1685	606	1079												
78300200	RAISED REFLECTIVE PAVEMENT MARKER REMOVAL	EACH	1685	606	1079												
X7011015	TRAFFIC CONTROL AND PROTECTION (EXPRESSWAYS)	L SUM	1	0.4	0.6												
* SPECIALTY ITEM																	



FILE NAME = c:\pwwork\p1001\WILGREENDP\0125109\0125109.dgn
 USER NAME = wilgreendp
 PLOT SCALE = 100.0000 / IN.
 PLOT DATE = 3/14/2009

DESIGNED -	REVISD -
DRAWN -	REVISD -
CHECKED -	REVISD -
DATE -	REVISD -

**STATE OF ILLINOIS
 DEPARTMENT OF TRANSPORTATION**

GENERAL LOCATION MAP - COOK & WILL COUNTIES

SCALE: SHEET NO. OF SHEETS STA. TO STA.

F.A. RTE.	SECTION	COUNTY	TOTAL SHEETS	SHEET NO.
VAR.	2009-027 PP	COOK & WILL	20	4
CONTRACT NO. 60G26				
FED. ROAD DIST. NO. [ILLINOIS] FED. AID PROJECT				

SUMMARY - SOUTH INTERSTATE MAINLINE	HMA 2" MILL & RESURFACE (SY)
I-55 FRONTAGE ROADS	
I-55 WEST FRONTAGE RD. (SPIKER ST. TO TAYLOR ST.)	10797
I-55 NE FRONTAGE RD. (LORENZO RD. TO 0.2 MILE S/O LORENZO RD.)	444
I-80	
I-80 EB (HARLEM AVE. TO I-294)	1330
I-80 WB (I-294 TO HARLEM AVE.)	2101
I-57	
I-57 NB & SB (175TH ST. TO STEGER RD.)	7867
IL 394	
IL 394 SB (STEGER RD. TO S/O BURVILLE RD.)	7750
SUMMARY TOTALS:	30289
	SY

NOTE:

DUE TO ROUNDING, SUMMARY TOTALS MAY VARY SLIGHTLY FROM THE TOTALS ON THE PATCHING SCHEDULES.

FILE NAME =	USER NAME = WILGREENDP	DESIGNED -	REVISED -	STATE OF ILLINOIS DEPARTMENT OF TRANSPORTATION	SUMMARY OF PATCHING SCHEDULE SOUTH INTERSTATES	F.A. RTE.	SECTION	COUNTY	TOTAL SHEETS	SHEET NO.
ca\pwwork\pwwid\WILGREENDP\d0125109\Design.dgn	DRAWN -	REVISED -	VAR.			2009-027 PP	COOK & WILL	20	5	
PLOT SCALE = 100.0000' / IN.	CHECKED -	REVISED -	CONTRACT NO. 60C26							
PLOT DATE = 3/19/2009	DATE -	REVISED -	SCALE:			SHEET NO. OF SHEETS	STA. TO STA.	FED. ROAD DIST. NO. 1 ILLINOIS FED. AID PROJECT		

ROUTE: I-55 W Frontage Rd (Spiker St. to Taylor St.) - HMA SURFACE

CROSS FROM	STREETS TO	DIRECTION (EB/WB) (NB/SB)	LANE NO. (1, 2, 3)	PAVEMENT PATCH WIDTH	PAVEMENT PATCH LENGTH	REPAIR AREA (SQ FT)	REPAIR AREA (SQ YD)
143rd St		SB	1	12	30	360	40
		SB	1	12	18	216	24
		SB	1	12	240	2880	320
		SB	1	12	1200	14400	1600
		SB	1	12	660	7920	880
		SB	1	12	1320	15840	1760
	Lockport-Plainfield Rd	SB	1	12	630	7560	840
Lockport-Plainfield Rd		NB	1	12	150	1800	200
		NB	1	12	600	7200	800
		NB	1	12	1940	23280	2587
		NB	1	12	670	8040	893
	143rd St	NB	1	12	640	7680	853

TOTALS:

8098
FT

10797
SY

FILE NAME =	USER NAME = WILGREENDP	DESIGNED -	REVISED -	STATE OF ILLINOIS DEPARTMENT OF TRANSPORTATION	PATCHING SCHEDULE I-55 FRONTAGE RD.			F.A. RTE.	SECTION	COUNTY	TOTAL SHEETS	SHEET NO.
es:\pwork\PWIDOT\WILGREENDP\0125109\Design.dgn		DRAWN -	REVISED -		SCALE:	SHEET NO. OF SHEETS	STA. TO STA.	VAR.	2009-027 PP	COOK & WILL	20	6
PLOT SCALE = 100.0000' / IN.		CHECKED -	REVISED -					CONTRACT NO. 60G26				
PLOT DATE = 3/19/2009		DATE -	REVISED -		FED. ROAD DIST. NO. 1 ILLINOIS FED. AID PROJECT							

ROUTE: **NE Frontage Rd.(I-55) (Lorenzo Rd. to 0.2 Mile S/O Lorenzo Rd.) - HMA SURFACE**

CROSS STREETS		DIRECTION (EB/WB) (NB/SB)	LANE NO. (1, 2, 3)	PAVEMENT PATCH WIDTH	PAVEMENT PATCH LENGTH	REPAIR AREA (SQ FT)	REPAIR AREA (SQ YD)
FROM	TO						
Lorenzo Road	0.1 mi. South of Lorenzo	SB	1	NONE		0	0
**This section was resurfaced when the interchange was reconstructed, and is in good condition							
0.2 mi. South of Lorenzo	0.3 mi. South of Lorenzo	SB - HMA	1	4	500	2,000	222
**This 0.1 mile long section is HMA							
0.3 mi. South of Lorenzo	0.2 mi. South of Lorenzo	NB - HMA	1	4	500	2,000	222
**This 0.1 mile long section is HMA							
0.1 mi. South of Lorenzo	Lorenzo Road	NB	1			0	0
**This section was resurfaced when the interchange was reconstructed, and is in good condition							

TOTALS:

1000
FT

444
SY

FILE NAME =	USER NAME = WILGREENDP	DESIGNED -	REVISED -
ct\p\work\PWIDT\WILGREENDP\0125109\design.dgn		DRAWN -	REVISED -
PLOT SCALE = 100.0000' / IN.		CHECKED -	REVISED -
PLOT DATE = 3/19/2009		DATE -	REVISED -

**STATE OF ILLINOIS
DEPARTMENT OF TRANSPORTATION**

**PATCHING SCHEDULE
I-55 FRONTAGE RD.**

SCALE: SHEET NO. OF SHEETS STA. TO STA.

F.A. RTE.	SECTION	COUNTY	TOTAL SHEETS	SHEET NO.
VAR.	2009-027 PP	COOK & WILL	20	7
CONTRACT NO. 60G26				
FED. ROAD DIST. NO. 1 [ILLINOIS] FED. AID PROJECT				

ROUTE: I-80 WB (I-294 Interchange to Harlem Ave) - HMA SURFACE

NEAREST FROM	MILEMARKER TO	DIRECTION (EB/WB)	LANE NO.	PAVEMENT PATCH	PAVEMENT PATCH	REPAIR AREA	REPAIR AREA
Milemarker	Milemarker	(NB/SB)	(1, 2, 3)	WIDTH	LENGTH	(SQ FT)	(SQ YD)
155	154	WB	1	12	60	720	80
155	154	WB	1	12	70	840	93
155	154	WB	1	12	6	72	8
155	154	WB	1	12	6	72	8
155	154	WB	1	12	8	96	11
155	154	WB	1	12	30	360	40
155	154	WB	1	12	20	240	27
155	154	WB	1	12	25	300	33
153.94		WB	1	12	20	240	27
153.65		WB	1	12	30	360	40
153.5		WB	1	12	20	240	27
153.43		WB	1	12	5	60	7
153.3		WB	1	12	6	72	8
153.1		WB	1	12	6	72	8
153		WB	1	12	10	120	13
152.9		WB	1	12	10	120	13
152.8		WB	1	12	15	180	20
152.79		WB	1	12	10	120	13
152.75		WB	1	12	10	120	13
152.6		WB	1	12	15	180	20
152.5		WB	1	12	40	480	53
152.45		WB	1	12	30	360	40
152.4		WB	1	12	10	120	13
152.35		WB	1	12	60	720	80
152.3		WB	1	12	15	180	20
152.2		WB	1	12	10	120	13
152.19		WB	1	12	10	120	13
151.7		WB	1	12	30	360	40
149.3		WB	1	12	6	72	8
149.06		WB	1	12	6	72	8
154.92		WB	2	12	30	360	40
154.9		WB	2	12	20	240	27
154.8		WB	2	12	6	72	8
154.76		WB	2	12	30	360	40
154.7		WB	2	12	20	240	27
154.65		WB	2	12	10	120	13
154.62		WB	2	12	15	180	20
154.42		WB	2	12	20	240	27
154.2		WB	2	12	30	360	40
153.94		WB	2	12	6	72	8
153.94		WB	2	12	20	240	27
153.92		WB	2	12	6	72	8
153.87		WB	2	12	6	72	8
153.53		WB	2	12	10	120	13
153.4		WB	2	12	10	120	13
153.11		WB	2	12	50	600	67
153.08		WB	2	12	6	72	8
152.94		WB	2	12	6	72	8
152.94		WB	2	12	4	48	5
152.92		WB	2	12	6	72	8
152.72		WB	2	12	6	72	8
152.36		WB	2	12	40	480	53
152.14		WB	2	12	10	120	13
152.12		WB	2	12	30	360	40
152.1		WB	2	12	30	360	40
152.08		WB	2	12	6	72	8
152.05		WB	2	12	20	240	27
152.03		WB	2	12	6	72	8

ROUTE: I-80 WB (I-294 Interchange to Harlem Ave) - HMA SURFACE

NEAREST FROM	MILEMARKER TO	DIRECTION (EB/WB)	LANE NO.	PAVEMENT PATCH	PAVEMENT PATCH	REPAIR AREA	REPAIR AREA
Milemarker	Milemarker	(NB/SB)	(1, 2, 3)	WIDTH	LENGTH	(SQ FT)	(SQ YD)
152		WB	2	12	15	180	20
151.86		WB	2	12	6	72	8
151.62		WB	2	12	30	360	40
151.61		WB	2	12	20	240	27
151.42		WB	2	12	15	180	20
151.33		WB	2	12	30	360	40
151.2		WB	2	12	10	120	13
151.11		WB	2	12	15	180	20
151		WB	2	12	25	300	33
149.95		WB	2	12	8	96	11
149.12		WB	2	12	6	72	8
154.76		WB	3	12	8	96	11
154.37		WB	3	12	8	96	11
154.36		WB	3	12	8	96	11
154.32		WB	3	12	6	72	8
154.01		WB	3	12	8	96	11
154.01		WB	3	12	6	72	8
153.72		WB	3	12	6	72	8
153.43		WB	3	12	6	72	8
153.3		WB	3	12	6	72	8
153.23		WB	3	12	8	96	11
153.01		WB	3	12	10	120	13
153.01		WB	3	12	6	72	8
152.87		WB	3	12	6	72	8
152.72		WB	3	12	6	72	8
152.58		WB	3	12	6	72	8
152.01		WB	3	12	6	72	8
151.9		WB	3	12	6	72	8
151.45		WB	3	12	40	480	53
151.11		WB	3	12	6	72	8
150.52		WB	3	12	6	72	8
150.32		WB	3	12	6	72	8
149.67		WB	3	12	8	96	11
149.45		WB	3	12	8	96	11
149.25		WB	3	12	30	360	40
149.2		WB	3	12	6	72	8
149.2	Joint Repair	WB	3	2	120	240	27
149		WB	3	12	60	720	80
148.98		WB	3	12	20	240	27
148.95		WB	3	12	6	72	8
148.9		WB	3	12	6	72	8

TOTALS: 1676 FT 2101 SY

ROUTE: I-57 NB & SB (175th St. to Steger Rd.) - HMA SURFACE

CROSS STREETS		DIRECTION (EB/WB) (NB/SB)	LANE NO. (1, 2, 3)	PAVEMENT PATCH WIDTH	PAVEMENT PATCH LENGTH	REPAIR AREA (SQ FT)	REPAIR AREA (SQ YD)
FROM	TO						
175th	Steger	NB	1	12	10	120	13
175th	Steger	NB	1	12	10	120	13
175th	Steger	NB	1	12	6	72	8
175th	Steger	NB	1	12	6	72	8
175th	Steger	NB	1	12	6	72	8
175th	Steger	NB	1	12	10	120	13
175th	Steger	NB	1	12	8	96	11
175th	Steger	NB	1	12	6	72	8
175th	Steger	NB	1	12	6	72	8
175th	Steger	NB	1	12	6	72	8
175th	Steger	NB	1	12	6	72	8
175th	Steger	NB	1	12	10	120	13
175th	Steger	NB	1	12	15	180	20
175th	Steger	NB	1	12	10	120	13
175th	Steger	NB	1	12	10	120	13
175th	Steger	NB	1	12	6	72	8
175th	Steger	NB	1	12	10	120	13
175th	Steger	NB	1	12	6	72	8
175th	Steger	NB	1	12	10	120	13
175th	Steger	NB	1	12	6	72	8
175th	Steger	NB	1	12	10	120	13
175th	Steger	NB	1	12	8	96	11
175th	Steger	NB	1	12	6	72	8
175th	Steger	NB	1	12	15	180	20
175th	Steger	NB	1	12	10	120	13
175th	Steger	NB	1	12	8	96	11
175th	Steger	NB	1	2	25	50	6
175th	Steger	NB	1	12	6	72	8
175th	Steger	NB	1	12	6	72	8
175th	Steger	NB	1	12	8	96	11
175th	Steger	NB	1	2	100	200	22
175th	Steger	NB	1	2	50	100	11
175th	Steger	NB	1	2	50	100	11
175th	Steger	NB	1	12	6	72	8
175th	Steger	NB	1	2	25	50	6
175th	Steger	NB	1	2	150	300	33
175th	Steger	NB	2	2	300	600	67
175th	Steger	NB	2	2	150	300	33
175th	Steger	NB	2	12	6	72	8
175th	Steger	NB	2	12	6	72	8
175th	Steger	NB	2	2	150	300	33
175th	Steger	NB	2	2	6	72	8
175th	Steger	NB	2	2	1000	2000	222
175th	Steger	NB	2	2	300	600	67
175th	Steger	NB	2	12	6	72	8
175th	Steger	NB	2	12	10	120	13
175th	Steger	NB	2	12	6	72	8
175th	Steger	NB	2	12	6	72	8
175th	Steger	NB	2	12	10	120	13
175th	Steger	NB	2	12	6	72	8
175th	Steger	NB	2	12	6	72	8
175th	Steger	NB	2	12	10	120	13
175th	Steger	NB	2	12	6	72	8
175th	Steger	NB	2	12	10	120	13
175th	Steger	NB	2	2	300	600	67
175th	Steger	NB	2	2	200	400	44
175th	Steger	NB	2	12	6	72	8

ROUTE: I-57 NB & SB (175th St. to Steger Rd.) - HMA SURFACE

CROSS STREETS		DIRECTION (EB/WB) (NB/SB)	LANE NO. (1, 2, 3)	PAVEMENT PATCH WIDTH	PAVEMENT PATCH LENGTH	REPAIR AREA (SQ FT)	REPAIR AREA (SQ YD)
FROM	TO						
175th	Steger	NB	2	12	200	2400	267
175th	Steger	NB	2	12	6	72	8
175th	Steger	NB	2	12	500	6000	667
175th	Steger	NB	2	12	6	72	8
175th	Steger	NB	2	12	6	72	8
175th	Steger	NB	2	12	6	72	8
175th	Steger	NB	2	12	6	72	8
175th	Steger	NB	2	12	6	72	8
175th	Steger	NB	2	12	6	72	8
175th	Steger	NB	2	12	10	120	13
175th	Steger	NB	2	2	50	100	11
175th	Steger	NB	2	2	25	50	6
175th	Steger	NB	2	2	1000	2000	222
175th	Steger	NB	2	12	6	72	8
175th	Steger	NB	2	12	6	72	8
175th	Steger	NB	2	2	500	1000	111
175th	Steger	NB	2	2	200	400	44
175th	Steger	NB	2	2	1000	2000	222
175th	Steger	NB	2	2	150	300	33
175th	Steger	NB	2	2	50	100	11
175th	Steger	NB	2	2	400	800	89
175th	Steger	NB	2	2	100	200	22
175th	Steger	NB	2	12	6	72	8
175th	Steger	NB	2	12	25	300	33
175th	Steger	NB	2	12	15	180	20
175th	Steger	NB	2	2	300	600	67
175th	Steger	NB	2	2	1500	3000	333
175th	Steger	NB	2	2	1500	3000	333
175th	Steger	NB	2	12	10	120	13
175th	Steger	NB	2	12	15	180	20
175th	Steger	NB	2	2	1500	3000	333
175th	Steger	NB	2	12	6	72	8
175th	Steger	NB	2	12	8	96	11
175th	Steger	NB	2	12	6	72	8
175th	Steger	NB	2	12	6	72	8
175th	Steger	NB	2	2	200	400	44
175th	Steger	NB	2	12	66	792	88
175th	Steger	NB	2	12	6	72	8
175th	Steger	NB	2	12	6	72	8
175th	Steger	NB	2	2	30	60	7
175th	Steger	NB	2	12	6	72	8
175th	Steger	NB	2	12	6	72	8
175th	Steger	NB	2	12	10	120	13
175th	Steger	NB	2	2	400	800	89
175th	Steger	NB	2	2	25	50	6
175th	Steger	NB	2	2	100	200	22
175th	Steger	NB	2	12	10	120	13
175th	Steger	NB	2	12	10	120	13
175th	Steger	NB	2	12	10	120	13
175th	Steger	NB	2	2	50	100	11
175th	Steger	NB	2	12	20	240	27
175th	Steger	NB	2	2	150	300	33
175th	Steger	NB	2	2	150	300	33
175th	Steger	NB	2	2	500	1000	111
175th	Steger	NB	2	12	6	72	8
175th	Steger	NB	2	12	6	72	8

CONTINUED ON THE NEXT SHEET

FILE NAME =	USER NAME = wlgreendp	DESIGNED -	REVISED -	STATE OF ILLINOIS DEPARTMENT OF TRANSPORTATION	PATCHING SCHEDULE I-57	F.A. RTE.	SECTION	COUNTY	TOTAL SHEETS	SHEET NO.
c:\pwork\PW1007\WILGREENDP\0125109\0125109.dgn	DRAWN -	REVISED -	VAR.			2009-027 PP	COOK & WILL	20	10	
PLOT SCALE = 100.0000 / IN.	CHECKED -	REVISED -	CONTRACT NO. 60C26							
PLOT DATE = 3/14/2009	DATE -	REVISED -	SCALE:			SHEET NO. OF SHEETS	STA. TO STA.	FED. ROAD DIST. NO. 1	ILLINOIS	FED. AID PROJECT

ROUTE: I-57 NB & SB (175th St. to Steger Rd.) - HMA SURFACE

CROSS STREETS		DIRECTION (EB/WB) (NB/SB)	LANE NO. (1, 2, 3)	PAVEMENT PATCH WIDTH	PAVEMENT PATCH LENGTH	REPAIR AREA (SQ FT)	REPAIR AREA (SQ YD)
FROM	TO						
Ouside Ramp Lane	by I-80	NB	Ramp	12	6	72	8
Ouside Ramp Lane	by I-80	NB	Ramp	12	6	72	8
Ouside Ramp Lane	by I-80	NB	Ramp	2	500	1000	111
Ouside Ramp Lane	by I-80	NB	Ramp	12	10	120	13
Ouside Ramp Lane	by I-80	NB	Ramp	2	150	300	33
Ouside Ramp Lane	by I-80	NB	Ramp	2	250	500	56
Ouside Ramp Lane	by I-80	NB	Ramp	12	6	72	8
Ouside Ramp Lane	by I-80	NB	Ramp	2	150	300	33
Ouside Ramp Lane	by I-80	NB	Ramp	12	6	72	8
WB I-80	to NB I-57	NB	Ramp	2	100	200	22
WB I-80	to NB I-57	NB	Ramp	2	50	100	11
WB I-80	to NB I-57	NB	Ramp	2	50	100	11
WB I-80	to NB I-57	NB	Ramp	12	8	96	11
WB I-80	to NB I-57	NB	Ramp	2	50	100	11
WB I-80	to NB I-57	NB	Ramp	12	6	72	8
North of 175th	Steger	SB	1	2	75	150	17
North of 175th	Steger	SB	1	2	150	300	33
North of 175th	Steger	SB	1	2	200	400	44
North of 175th	Steger	SB	1	2	75	150	17
North of 175th	Steger	SB	1	2	150	300	33
North of 175th	Steger	SB	1	12	6	72	8
North of 175th	Steger	SB	1	12	6	72	8
North of 175th	Steger	SB	1	2	150	300	33
North of 175th	Steger	SB	1	2	400	800	89
North of 175th	Steger	SB	1	2	100	200	22
North of 175th	Steger	SB	1	2	75	150	17
North of 175th	Steger	SB	1	12	6	72	8
North of 175th	Steger	SB	1	12	6	72	8
North of 175th	Steger	SB	1	2	150	300	33
North of 175th	Steger	SB	1	2	400	800	89
North of 175th	Steger	SB	1	2	100	200	22
North of 175th	Steger	SB	1	2	75	150	17
North of 175th	Steger	SB	1	12	6	72	8
North of 175th	Steger	SB	1	12	6	72	8
North of 175th	Steger	SB	1	2	50	100	11
North of 175th	Steger	SB	1	12	8	96	11
North of 175th	Steger	SB	1	12	8	96	11
North of 175th	Steger	SB	1	12	20	240	27
North of 175th	Steger	SB	1	12	6	72	8
North of 175th	Steger	SB	1	2	50	100	11
North of 175th	Steger	SB	1	12	10	120	13
North of 175th	Steger	SB	1	12	25	300	33
North of 175th	Steger	SB	1	12	8	96	11
North of 175th	Steger	SB	1	12	50	100	11
North of 175th	Steger	SB	1	12	50	100	11
North of 175th	Steger	SB	1	12	6	72	8
North of 175th	Steger	SB	1	12	6	72	8
North of 175th	Steger	SB	1	2	25	50	6
North of 175th	Steger	SB	1	12	8	96	11
North of 175th	Steger	SB	1	12	8	96	11
North of 175th	Steger	SB	1	12	6	72	8
North of 175th	Steger	SB	1	12	10	120	13
North of 175th	Steger	SB	1	12	10	120	13
North of 175th	Steger	SB	1	12	6	72	8
North of 175th	Steger	SB	1	12	8	96	11
North of 175th	Steger	SB	1	12	10	120	13
North of 175th	Steger	SB	1	2	75	150	17
North of 175th	Steger	SB	1	2	50	100	11

ROUTE: I-57 NB & SB (175th St. to Steger Rd.) - HMA SURFACE

CROSS STREETS		DIRECTION (EB/WB) (NB/SB)	LANE NO. (1, 2, 3)	PAVEMENT PATCH WIDTH	PAVEMENT PATCH LENGTH	REPAIR AREA (SQ FT)	REPAIR AREA (SQ YD)
FROM	TO						
North of 175th	Steger	SB	1	2	75	150	17
North of 175th	Steger	SB	1	2	50	100	11
North of 175th	Steger	SB	1	12	6	72	8
North of 175th	Steger	SB	1	12	6	72	8
North of 175th	Steger	SB	1	12	6	72	8
North of 175th	Steger	SB	1	12	6	72	8
North of 175th	Steger	SB	1	12	8	96	11
North of 175th	Steger	SB	1	12	8	96	11
North of 175th	Steger	SB	2	12	10	120	13
North of 175th	Steger	SB	2	12	15	180	20
North of 175th	Steger	SB	2	2	100	200	22
North of 175th	Steger	SB	2	2	250	500	56
North of 175th	Steger	SB	2	2	300	600	67
North of 175th	Steger	SB	2	2	500	1000	111
North of 175th	Steger	SB	2	12	6	72	8
North of 175th	Steger	SB	2	2	250	500	56
North of 175th	Steger	SB	2	2	150	300	33
North of 175th	Steger	SB	2	2	400	800	89
North of 175th	Steger	SB	2	2	100	200	22
North of 175th	Steger	SB	2	12	6	72	8
North of 175th	Steger	SB	2	2	75	150	17
North of 175th	Steger	SB	2	12	25	300	33
North of 175th	Steger	SB	2	12	25	300	33
North of 175th	Steger	SB	2	2	100	200	22
North of 175th	Steger	SB	2	2	100	200	22
North of 175th	Steger	SB	2	2	100	200	22
North of 175th	Steger	SB	2	2	100	200	22
North of 175th	Steger	SB	2	12	6	72	8
North of 175th	Steger	SB	2	12	8	96	11
North of 175th	Steger	SB	2	2	600	1200	133
North of 175th	Steger	SB	2	12	6	72	8
North of 175th	Steger	SB	2	12	6	72	8
North of 175th	Steger	SB	2	12	6	72	8
North of 175th	Steger	SB	2	12	20	240	27
North of 175th	Steger	SB	2	2	200	400	44
North of 175th	Steger	SB	2	2	500	1000	111
North of 175th	Steger	SB	2	12	8	96	11
North of 175th	Steger	SB	2	2	200	400	44
North of 175th	Steger	SB	2	12	10	120	13
North of 175th	Steger	SB	2	2	50	100	11
North of 175th	Steger	SB	2	2	50	100	11
North of 175th	Steger	SB	2	2	50	100	11
North of 175th	Steger	SB	2	2	400	800	89
North of 175th	Steger	SB	2	2	100	200	22
North of 175th	Steger	SB	2	12	6	72	8
North of 175th	Steger	SB	2	12	6	72	8
North of 175th	Steger	SB	2	2	200	400	44
North of 175th	Steger	SB	2	12	20	240	27
North of 175th	Steger	SB	2	2	100	200	22
North of 175th	Steger	SB	2	2	100	200	22
North of 175th	Steger	SB	2	2	100	200	22
North of 175th	Steger	SB	2	12	10	120	13
North of 175th	Steger	SB	2	12	6	72	8
North of 175th	Steger	SB	2	2	50	100	11
North of 175th	Steger	SB	2	2	50	100	11
North of 175th	Steger	SB	2	12	6	72	8
North of 175th	Steger	SB	2	12	6	72	8

CONTINUED ON THE NEXT SHEET

FILE NAME =	USER NAME = wlgreendp	DESIGNED -	REVISED -	STATE OF ILLINOIS DEPARTMENT OF TRANSPORTATION	PATCHING SCHEDULE I-57	F.A. R.T.E.	SECTION	COUNTY	TOTAL SHEETS	SHEET NO.
ca\pwwork\pww\1001\WILGREENDP\0125109\01sign.dgn	DRAWN -	REVISED -	VAR.			2009-027 PP	COOK & WILL	20	11	
PLOT SCALE = 1/8"=1'-0"	CHECKED -	REVISED -	CONTRACT NO. 60G26							
PLOT DATE = 3/14/2009	DATE -	REVISED -	SCALE:			SHEET NO. OF SHEETS	STA. TO STA.	FED. ROAD DIST. NO. 1 [ILLINOIS] FED. AID PROJECT		

ROUTE: I-57 NB & SB (175th St. to Steger Rd.) - HMA SURFACE

CROSS STREETS		DIRECTION (EB/WB) (NB/SB)	LANE NO. (1, 2, 3)	PAVEMENT PATCH WIDTH	PAVEMENT PATCH LENGTH	REPAIR AREA (SQ FT)	REPAIR AREA (SQ YD)
FROM	TO						
North of 175th	Steger	SB	2	12	6	72	8
North of 175th	Steger	SB	2	12	8	96	11
North of 175th	Steger	SB	2	2	100	200	22
North of 175th	Steger	SB	2	2	100	200	22
North of 175th	Steger	SB	2	2	50	100	11
North of 175th	Steger	SB	2	2	50	100	11
North of 175th	Steger	SB	2	2	50	100	11
North of 175th	Steger	SB	2	2	100	200	22
North of 175th	Steger	SB	2	12	6	72	8
North of 175th	Steger	SB	2	2	50	100	11
North of 175th	Steger	SB	2	2	50	100	11
North of 175th	Steger	SB	2	2	50	100	11
North of 175th	Steger	SB	2	12	6	72	8
North of 175th	Steger	SB	2	12	6	72	8
North of 175th	Steger	SB	2	2	50	100	11
North of 175th	Steger	SB	2	2	50	100	11
North of 175th	Steger	SB	2	12	6	72	8
North of 175th	Steger	SB	2	12	6	72	8
North of 175th	Steger	SB	2	2	150	300	33
North of 175th	Steger	SB	2	2	150	300	33
North of 175th	Steger	SB	2	2	300	600	67
North of 175th	Steger	SB	2	12	6	72	8
Outside Ramp Lanes	at WB I-80 (2 lanes)	SB	Ramp	12	20	240	27
Outside Ramp Lanes	at WB I-80 (2 lanes)	SB	Ramp	12	20	240	27
Outside Ramp Lanes	at WB I-80 (2 lanes)	SB	Ramp	12	20	240	27
Outside Ramp Lanes	at WB I-80 (2 lanes)	SB	Ramp	12	10	120	13
Outside Ramp Lanes	at WB I-80 (2 lanes)	SB	Ramp	12	6	72	8
Outside Ramp Lanes	at WB I-80 (2 lanes)	SB	Ramp	2	150	300	33
Outside Ramp Lanes	at WB I-80 (2 lanes)	SB	Ramp	2	100	200	22
Outside Ramp Lanes	at WB I-80 (2 lanes)	SB	Ramp	12	6	72	8
Outside Ramp Lanes	at WB I-80 (2 lanes)	SB	Ramp	12	6	72	8
Outside Ramp Lanes	at WB I-80 (2 lanes)	SB	Ramp	12	8	96	11
Outside Ramp Lanes	at WB I-80 (2 lanes)	SB	Ramp	12	8	96	11
Inside Ramp Lane at	WB I-80	SB	Ramp	2	100	200	22
Inside Ramp Lane at	WB I-80	SB	Ramp	12	6	72	8
Inside Ramp Lane at	WB I-80	SB	Ramp	12	12	144	16
Inside Ramp Lane at	WB I-80	SB	Ramp	2	50	100	11
Inside Ramp Lane at	WB I-80	SB	Ramp	12	10	120	13
Inside Ramp Lane at	WB I-80	SB	Ramp	12	6	72	8

TOTALS: 24988 FT 7867 SY

FILE NAME =	USER NAME = wilgreendp	DESIGNED -	REVISED -	STATE OF ILLINOIS DEPARTMENT OF TRANSPORTATION	PATCHING SCHEDULE I-57			F.A. RTE.	SECTION	COUNTY	TOTAL SHEETS	SHEET NO.
at\pr_work\FWIDOT\WILGREENDP\0125109\0125109.dgn	DRAWN -	REVISED -	REVISED -					VAR.	2009-027 PP	COOK & WILL	20	12
PLOT SCALE = 100.0000' / IN.	CHECKED -	REVISED -	REVISED -		CONTRACT NO. 60C26			FED. ROAD DIST. NO. 1 [ILLINOIS] FED. AID PROJECT				
PLOT DATE = 3/14/2009	DATE -	REVISED -	REVISED -		SCALE:	SHEET NO.	OF	SHEETS	STA.	TO STA.		

ROUTE: ILL 394 SB: Steger Rd to South of Burville Rd. - HMA SURFACE

CROSS STREETS		DIRECTION	LANE	PAVEMENT	PAVEMENT	REPAIR	REPAIR
FROM	TO	(EB/WB) (NB/SB)	NO. (1, 2, 3)	PATCH WIDTH	PATCH LENGTH	AREA (SQ FT)	AREA (SQ YD)
Steger Rd	Richton Rd	SB	1	12	200	2400	267
Steger Rd	Richton Rd	SB	1	12	6	72	8
Steger Rd	Richton Rd	SB	1	12	6	72	8
Steger Rd	Richton Rd	SB	1	12	6	72	8
Steger Rd	Richton Rd	SB	1	12	6	72	8
Steger Rd	Richton Rd	SB	1	12	6	72	8
Steger Rd	Richton Rd	SB	1	12	6	72	8
Steger Rd	Richton Rd	SB	1	12	6	72	8
Steger Rd	Richton Rd	SB	1	12	6	72	8
Steger Rd	Richton Rd	SB	1	12	6	72	8
Steger Rd	Richton Rd	SB	1	12	6	72	8
Steger Rd	Richton Rd	SB	1	12	6	72	8
Steger Rd	Richton Rd	SB	1	12	6	72	8
Steger Rd	Richton Rd	SB	1	12	6	72	8
Steger Rd	Richton Rd	SB	1	12	6	72	8
Steger Rd	Richton Rd	SB	1	12	6	72	8
Steger Rd	Richton Rd	SB	1	12	6	72	8
Steger Rd	Richton Rd	SB	1	12	6	72	8
Steger Rd	Richton Rd	SB	1	12	6	72	8
Steger Rd	Richton Rd	SB	1	12	20	240	27
Steger Rd	Richton Rd	SB	1	12	6	72	8
Steger Rd	Richton Rd	SB	1	12	6	72	8
Steger Rd	Richton Rd	SB	1	12	6	72	8
Richton Rd	Exchange St	SB	1	12	40	480	53
Richton Rd	Exchange St	SB	1	12	6	72	8
Richton Rd	Exchange St	SB	1	12	6	72	8
Richton Rd	Exchange St	SB	1	12	6	72	8
Richton Rd	Exchange St	SB	1	12	15	180	20
Richton Rd	Exchange St	SB	1	12	50	600	67
Richton Rd	Exchange St	SB	1	12	6	72	8
Richton Rd	Exchange St	SB	1	12	6	72	8
Richton Rd	Exchange St	SB	1	12	6	72	8
Richton Rd	Exchange St	SB	1	12	6	72	8
Richton Rd	Exchange St	SB	1	12	6	72	8
Richton Rd	Exchange St	SB	1	12	6	72	8
Richton Rd	Exchange St	SB	1	12	6	72	8
Richton Rd	Exchange St	SB	1	12	6	72	8
Richton Rd	Exchange St	SB	1	12	6	72	8
Richton Rd	Exchange St	SB	1	12	20	240	27
Richton Rd	Exchange St	SB	1	12	1600	19200	2133
Exchange St	Burville Rd	SB	1	12	6	72	8
Exchange St	Burville Rd	SB	1	12	6	72	8
Exchange St	Burville Rd	SB	1	12	6	72	8
Exchange St	Burville Rd	SB	1	12	6	72	8
Exchange St	Burville Rd	SB	1	12	10	120	13
Exchange St	Burville Rd	SB	1	12	6	72	8

ROUTE: ILL 394 SB: Steger Rd to South of Burville Rd. - HMA SURFACE

CROSS STREETS		DIRECTION	LANE	PAVEMENT	PAVEMENT	REPAIR	REPAIR
FROM	TO	(EB/WB) (NB/SB)	NO. (1, 2, 3)	PATCH WIDTH	PATCH LENGTH	AREA (SQ FT)	AREA (SQ YD)
Burville Rd	South of Burville Rd	SB	1	12	6	72	8
Burville Rd	South of Burville Rd	SB	1	12	6	72	8
Burville Rd	South of Burville Rd	SB	1	12	6	72	8
Burville Rd	South of Burville Rd	SB	1	12	6	72	8
Steger Rd	Richton Rd	SB	2	12	600	7200	800
Steger Rd	Richton Rd	SB	2	12	8	96	11
Steger Rd	Richton Rd	SB	2	12	8	96	11
Steger Rd	Richton Rd	SB	2	12	8	96	11
Steger Rd	Richton Rd	SB	2	12	8	96	11
Steger Rd	Richton Rd	SB	2	12	8	96	11
Steger Rd	Richton Rd	SB	2	12	8	96	11
Steger Rd	Richton Rd	SB	2	12	8	96	11
Steger Rd	Richton Rd	SB	2	12	8	96	11
Steger Rd	Richton Rd	SB	2	2	50	100	11
Steger Rd	Richton Rd	SB	2	12	8	96	11
Steger Rd	Richton Rd	SB	2	12	8	96	11
Steger Rd	Richton Rd	SB	2	12	8	96	11
Steger Rd	Richton Rd	SB	2	12	8	96	11
Steger Rd	Richton Rd	SB	2	12	8	96	11
Steger Rd	Richton Rd	SB	2	2	50	100	11
Steger Rd	Richton Rd	SB	2	12	6	72	8
Steger Rd	Richton Rd	SB	2	12	6	72	8
Steger Rd	Richton Rd	SB	2	12	6	72	8
Steger Rd	Richton Rd	SB	2	12	6	72	8
Steger Rd	Richton Rd	SB	2	12	6	72	8
Steger Rd	Richton Rd	SB	2	12	6	72	8
Steger Rd	Richton Rd	SB	2	12	6	72	8
Steger Rd	Richton Rd	SB	2	12	6	72	8
Steger Rd	Richton Rd	SB	2	12	10	120	13
Steger Rd	Richton Rd	SB	2	12	8	96	11
Steger Rd	Richton Rd	SB	2	12	25	300	33
Steger Rd	Richton Rd	SB	2	2	100	200	22
Steger Rd	Richton Rd	SB	2	12	6	72	8
Steger Rd	Richton Rd	SB	2	12	6	72	8
Steger Rd	Richton Rd	SB	2	12	6	72	8
Steger Rd	Richton Rd	SB	2	12	6	72	8
Steger Rd	Richton Rd	SB	2	12	6	72	8
Steger Rd	Richton Rd	SB	2	12	6	72	8
Steger Rd	Richton Rd	SB	2	12	6	72	8
Steger Rd	Richton Rd	SB	2	12	6	72	8
Steger Rd	Richton Rd	SB	2	12	6	72	8
Steger Rd	Richton Rd	SB	2	12	6	72	8
Steger Rd	Richton Rd	SB	2	12	6	72	8
Steger Rd	Richton Rd	SB	2	12	6	72	8
Steger Rd	Richton Rd	SB	2	12	6	72	8
Steger Rd	Richton Rd	SB	2	12	6	72	8
Steger Rd	Richton Rd	SB	2	12	6	72	8
Steger Rd	Richton Rd	SB	2	12	6	72	8
Steger Rd	Richton Rd	SB	2	12	6	72	8
Steger Rd	Richton Rd	SB	2	12	6	72	8
Richton Rd	Exchange St	SB	2	12	6	72	8
Richton Rd	Exchange St	SB	2	12	6	72	8
Richton Rd	Exchange St	SB	2	12	6	72	8
Richton Rd	Exchange St	SB	2	12	6	72	8
Richton Rd	Exchange St	SB	2	12	6	72	8
Richton Rd	Exchange St	SB	2	12	6	72	8
Richton Rd	Exchange St	SB	2	12	6	72	8
Richton Rd	Exchange St	SB	2	12	6	72	8
Richton Rd	Exchange St	SB	2	12	6	72	8
Richton Rd	Exchange St	SB	2	12	6	72	8
Richton Rd	Exchange St	SB	2	12	6	72	8
Richton Rd	Exchange St	SB	2	12	6	72	8
Richton Rd	Exchange St	SB	2	12	6	72	8
Richton Rd	Exchange St	SB	2	2	100	200	22
Richton Rd	Exchange St	SB	2	12	6	72	8
Richton Rd	Exchange St	SB	2	12	6	72	8
Richton Rd	Exchange St	SB	2	12	6	72	8
Richton Rd	Exchange St	SB	2	12	6	72	8
Richton Rd	Exchange St	SB	2	2	100	200	22
Richton Rd	Exchange St	SB	2	12	6	72	8

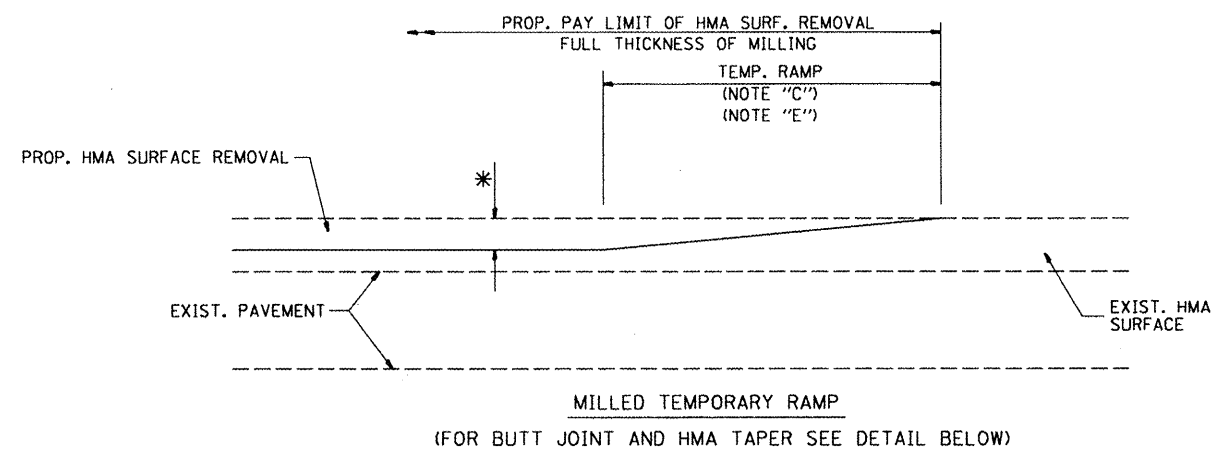
CONTINUED ON THE NEXT SHEET

ROUTE: ILL 394 SB: Steger Rd to South of Burville Rd. - HMA SURFACE

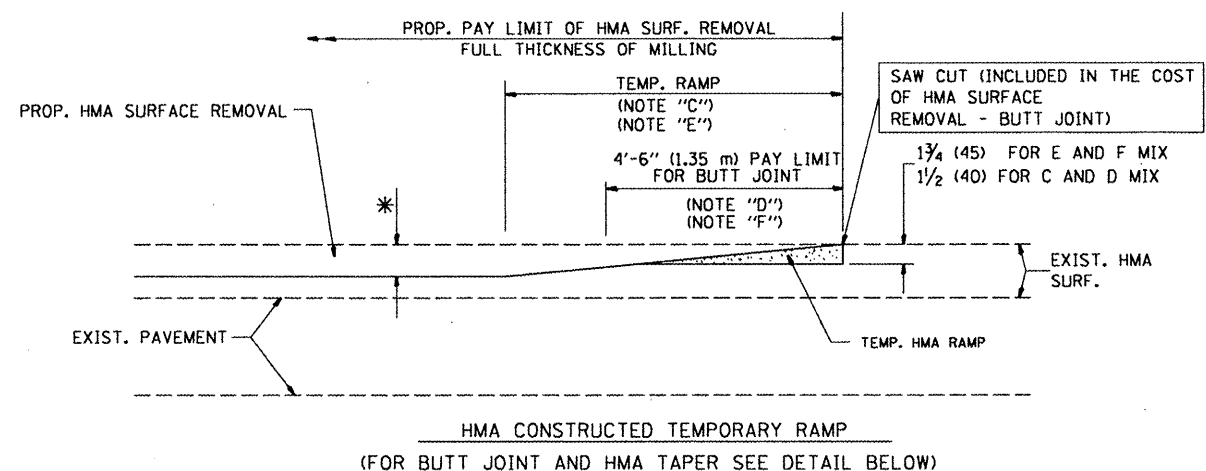
CROSS STREETS		DIRECTION (EB/WB) (NB/SB)	LANE NO. (1, 2, 3)	PAVEMENT PATCH WIDTH	PAVEMENT PATCH LENGTH	REPAIR AREA (SQ FT)	REPAIR AREA (SQ YD)
FROM	TO						
Richton Rd	Exchange St	SB	2	12	6	72	8
Richton Rd	Exchange St	SB	2	12	20	240	27
Richton Rd	Exchange St	SB	2	12	10	120	13
Richton Rd	Exchange St	SB	2	12	6	72	8
Richton Rd	Exchange St	SB	2	12	6	72	8
Richton Rd	Exchange St	SB	2	12	200	2400	267
Richton Rd	Exchange St	SB	2	12	6	72	8
Richton Rd	Exchange St	SB	2	12	200	2400	267
Richton Rd	Exchange St	SB	2	12	200	2400	267
Richton Rd	Exchange St	SB	2	12	6	72	8
Richton Rd	Exchange St	SB	2	2	50	100	11
Richton Rd	Exchange St	SB	2	12	6	72	8
Richton Rd	Exchange St	SB	2	12	6	72	8
Richton Rd	Exchange St	SB	2	12	6	72	8
Richton Rd	Exchange St	SB	2	12	6	72	8
Richton Rd	Exchange St	SB	2	12	6	72	8
Richton Rd	Exchange St	SB	2	12	6	72	8
Richton Rd	Exchange St	SB	2	12	1600	19200	2133
Exchange St	Burville Rd	SB	2	12	6	72	8
Exchange St	Burville Rd	SB	2	12	6	72	8
Exchange St	Burville Rd	SB	2	12	6	72	8
Exchange St	Burville Rd	SB	2	2	100	200	22
Exchange St	Burville Rd	SB	2	12	6	72	8
Exchange St	Burville Rd	SB	2	12	6	72	8
Exchange St	Burville Rd	SB	2	12	6	72	8
Exchange St	Burville Rd	SB	2	12	6	72	8
Exchange St	Burville Rd	SB	2	12	6	72	8
Exchange St	Burville Rd	SB	2	2	50	100	11
Exchange St	Burville Rd	SB	2	12	6	72	8
Exchange St	Burville Rd	SB	2	12	6	72	8
Exchange St	Burville Rd	SB	2	12	6	72	8
Exchange St	Burville Rd	SB	2	12	6	72	8
Exchange St	Burville Rd	SB	2	12	6	72	8
Exchange St	Burville Rd	SB	2	12	6	72	8
Exchange St	Burville Rd	SB	2	12	6	72	8
Exchange St	Burville Rd	SB	2	12	6	72	8
Exchange St	Burville Rd	SB	2	2	100	200	22
Exchange St	Burville Rd	SB	2	12	6	72	8
Exchange St	Burville Rd	SB	2	12	6	72	8
Exchange St	Burville Rd	SB	2	12	50	600	67
Exchange St	Burville Rd	SB	2	12	6	72	8
Exchange St	Burville Rd	SB	2	12	6	72	8
Burville Rd	South of Burville Rd	SB	2	12	6	72	8
Burville Rd	South of Burville Rd	SB	2	12	6	72	8
Burville Rd	South of Burville Rd	SB	2	12	6	72	8
Burville Rd	South of Burville Rd	SB	2	12	40	480	53
Burville Rd	South of Burville Rd	SB	2	12	40	480	53

TOTALS: 6354 FT 7750 SY

FILE NAME =	USER NAME = wilgreendp	DESIGNED -	REVISED -	STATE OF ILLINOIS DEPARTMENT OF TRANSPORTATION	PATCHING SCHEDULE IL 394	F.A. RTE.	SECTION	COUNTY	TOTAL SHEETS	SHEET NO.
at\pr_work\PW1007\WILGREENDP\d0125109\01.psdgn	DRAWN -	REVISED -	VAR.			2009-027 PP	COOK & WILL	20	14	
PLOT SCALE = 100.0000' / IN.	CHECKED -	REVISED -	CONTRACT NO. 60C26							
PLOT DATE = 3/14/2009	DATE -	REVISED -	SCALE:			SHEET NO.	OF SHEETS	STA.	TO STA.	FED. ROAD DIST. NO. 1

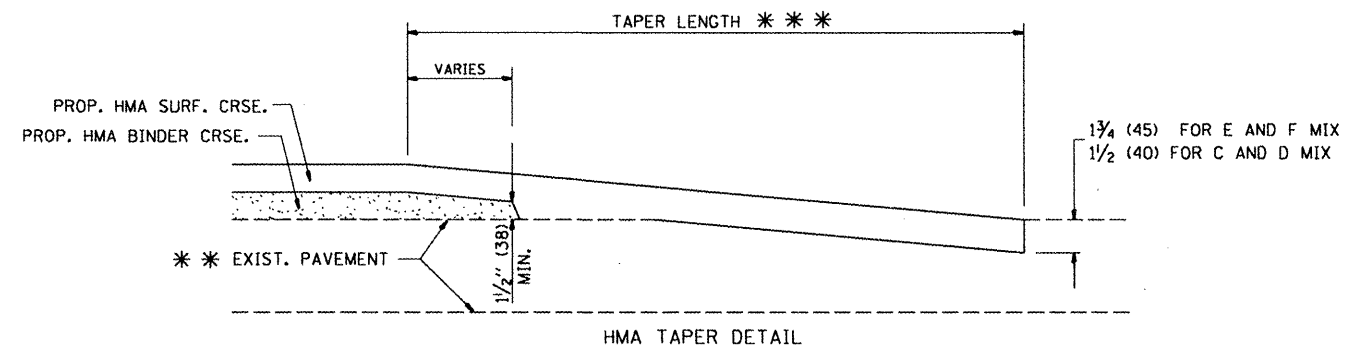
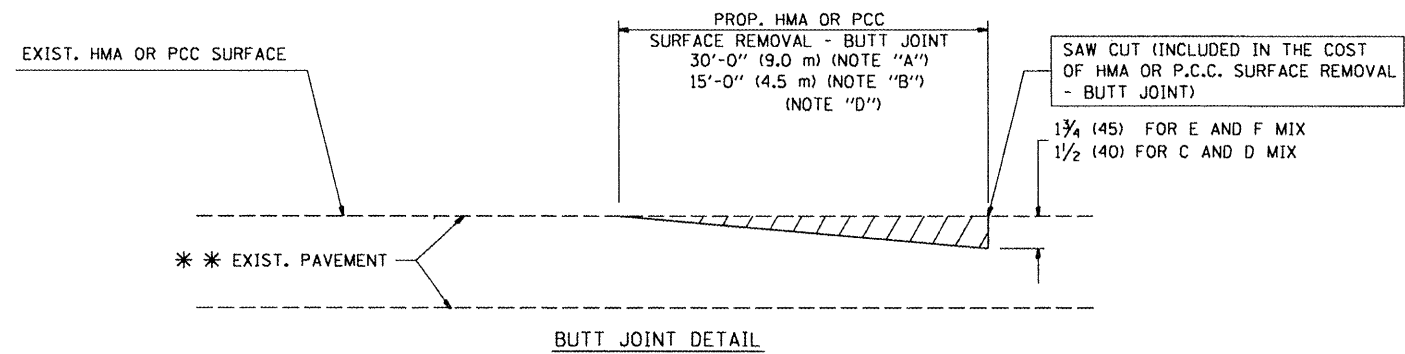


OPTION 1



OPTION 2

TYPICAL TEMPORARY RAMP



TYPICAL BUTT JOINT AND HMA TAPER FOR RESURFACING ONLY

*** PC CONCRETE, HMA OR HMA RESURFACED PAVEMENT.

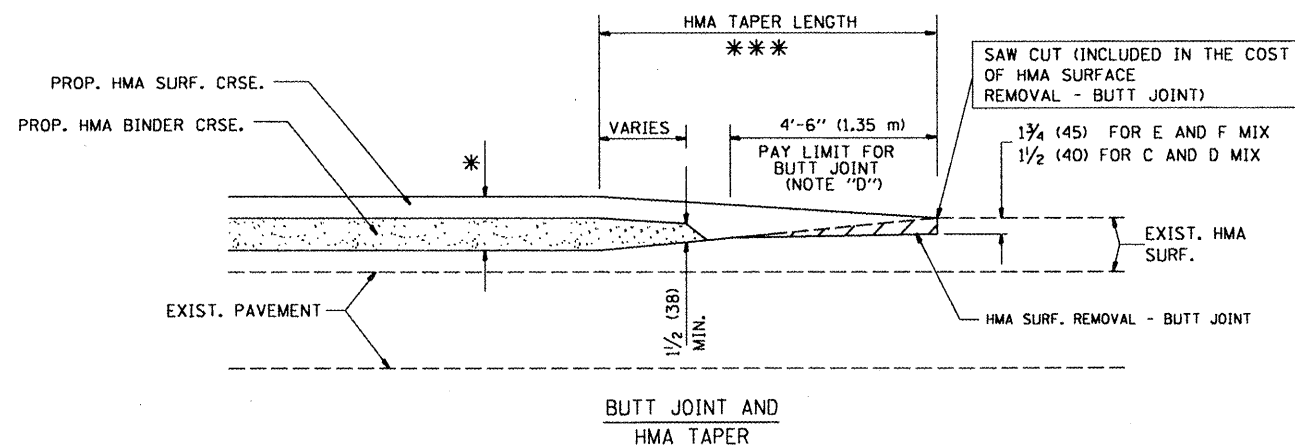
NOTES

- A: MAINLINE ROADWAYS AND MAJOR SIDE ROADS.
 - B: MINOR SIDE ROADS.
 - C: THE TEMP. RAMP SHALL BE CONSTRUCTED IMMEDIATELY UPON REMOVAL OF THE EXISTING HMA SURFACE.
 - D: THE BUTT JOINT SHALL BE CONSTRUCTED IMMEDIATELY PRIOR TO PLACING THE PROPOSED HMA COURSES.
 - E: TAPER THE TEMP. RAMP AT A RATE OF 3'-0" (900 mm) PER 1 INCH (25 mm) OF MILLING THICKNESS.
 - F: INSTALLATION AND REMOVAL OF THE 4'-6" (1.35 m) TEMP. RAMP IS INCLUDED IN COST OF HMA SURFACE REMOVAL - BUTT JOINT
 - G: SEE ARTICLE 406.08 AND 406.14 OF THE STANDARD SPECIFICATIONS FOR "HMA AND/OR PCC SURFACE REMOVAL, BUTT JOINT".
- * SEE TYPICAL SECTIONS FOR MILLING THICKNESS.
- *** 20'-0" (6.1 m) PER 1 (25) RESURFACING (NOTE "A")
 10'-0" (3.0 m) PER 1 (25) RESURFACING (NOTE "B")

BASIS OF PAYMENT:

THE BUTT JOINT WILL BE PAID FOR AT THE CONTRACT UNIT PRICE PER SQUARE YARD (SQUARE METER) FOR "HOT-MIX ASPHALT SURFACE REMOVAL - BUTT JOINT" OR FOR "PORTLAND CEMENT CONCRETE SURFACE REMOVAL - BUTT JOINT".

ALL DIMENSIONS ARE IN INCHES (MILLIMETERS) UNLESS OTHERWISE SHOWN.



TYPICAL BUTT JOINT AND HMA TAPER FOR MILLING AND RESURFACING

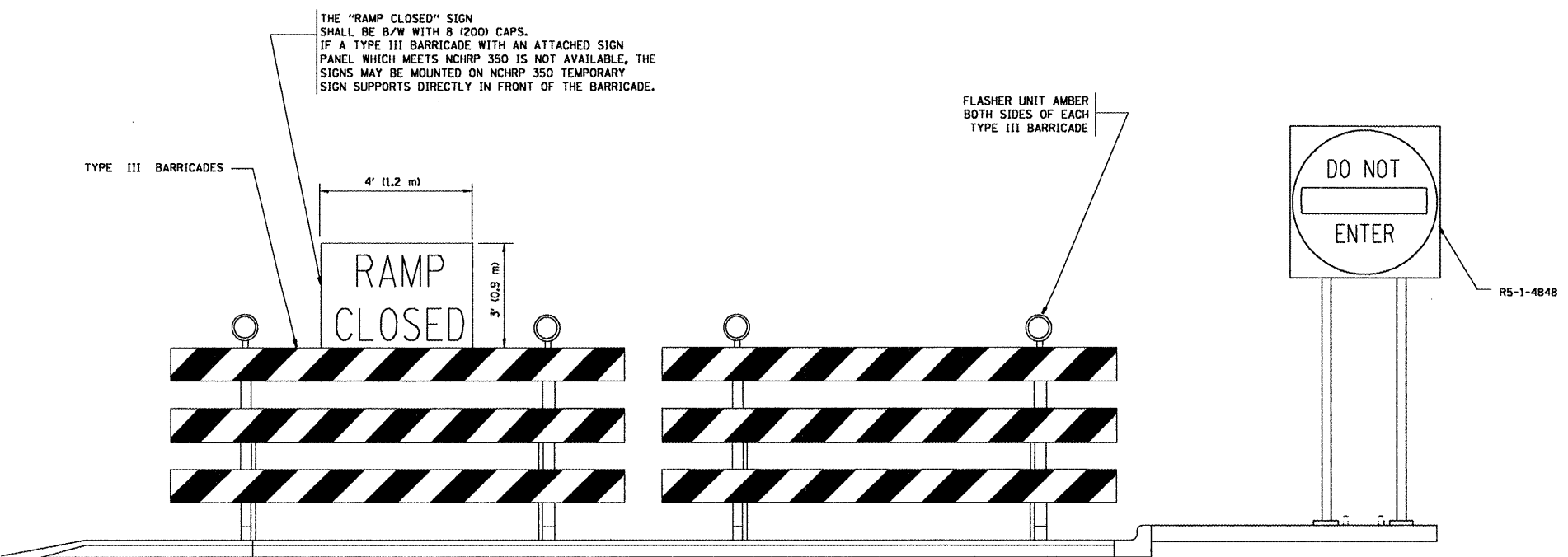
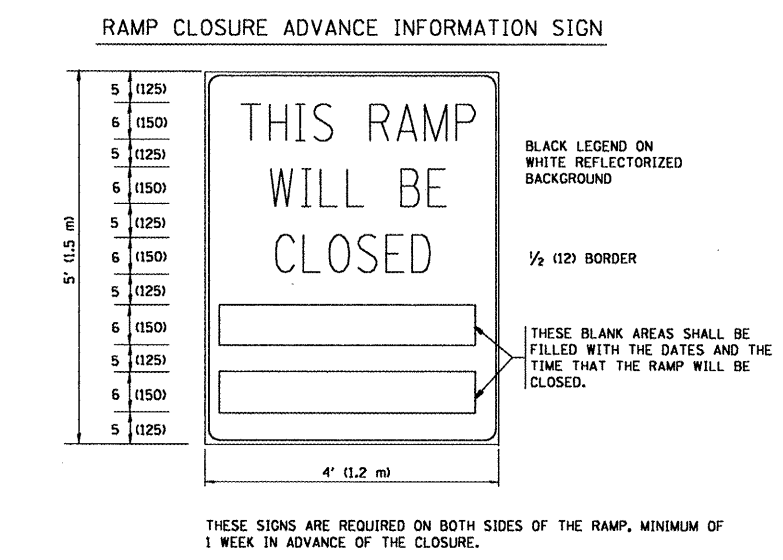
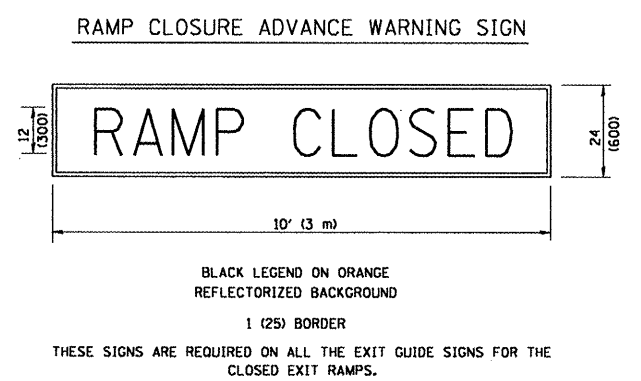
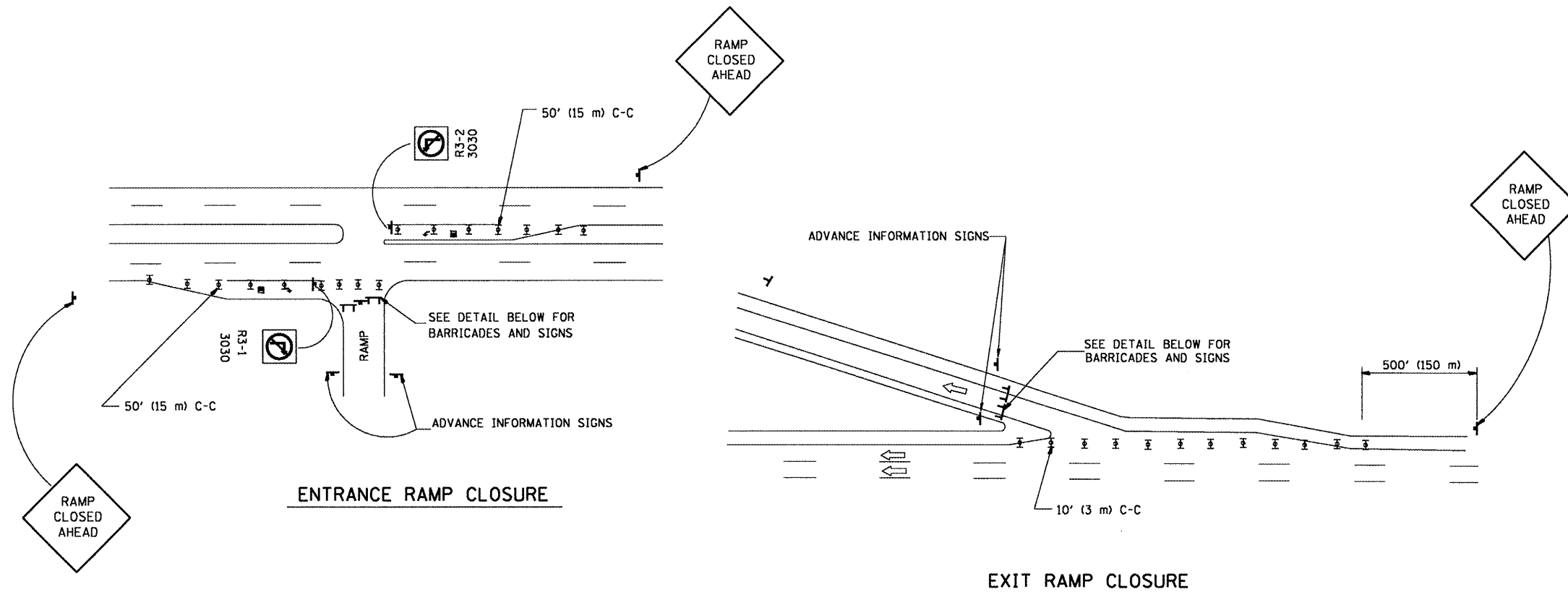
FILE NAME =	USER NAME = wilgreendp	DESIGNED - M. DE YONG	REVISED - R. SHAH 10-25-94
al\pe_work\PM1007\WILGREENDP\d0125109\0	alStd.dgn	DRAWN -	REVISED - A. ABBAS 03-21-97
PLOT SCALE = 100.0000 / IN.	CHECKED -	REVISED - M. GOMEZ 04-06-01	
PLOT DATE = 3/14/2009	DATE - 06-13-90	REVISED - R. BORO 01-01-07	

**STATE OF ILLINOIS
DEPARTMENT OF TRANSPORTATION**

**BUTT JOINT AND
HMA TAPER DETAILS**

SCALE: NONE SHEET NO. 1 OF 1 SHEETS STA. TO STA.

F.A. RTE.	SECTION	COUNTY	TOTAL SHEETS	SHEET NO.
VAP	2009-027 PP	Cook + Will	20	15
BD400-05 BD32		CONTRACT NO. 60626		
FED. ROAD DIST. NO. 1 ILLINOIS FED. AID PROJECT				



THE "RAMP CLOSED" SIGN SHALL BE B/W WITH 8 (200) CAPS. IF A TYPE III BARRICADE WITH AN ATTACHED SIGN PANEL WHICH MEETS NCHRP 350 IS NOT AVAILABLE, THE SIGNS MAY BE MOUNTED ON NCHRP 350 TEMPORARY SIGN SUPPORTS DIRECTLY IN FRONT OF THE BARRICADE.

DETAIL FOR REQUIRED BARRICADES & SIGNS

- SYMBOLS**
- ▬ TYPE II BARRICADE, DRUM OR VERTICAL BARRICADE WITH STEADY BURN MONO-DIRECTIONAL LIGHT
 - TYPE III BARRICADE WITH FLASHING LIGHT

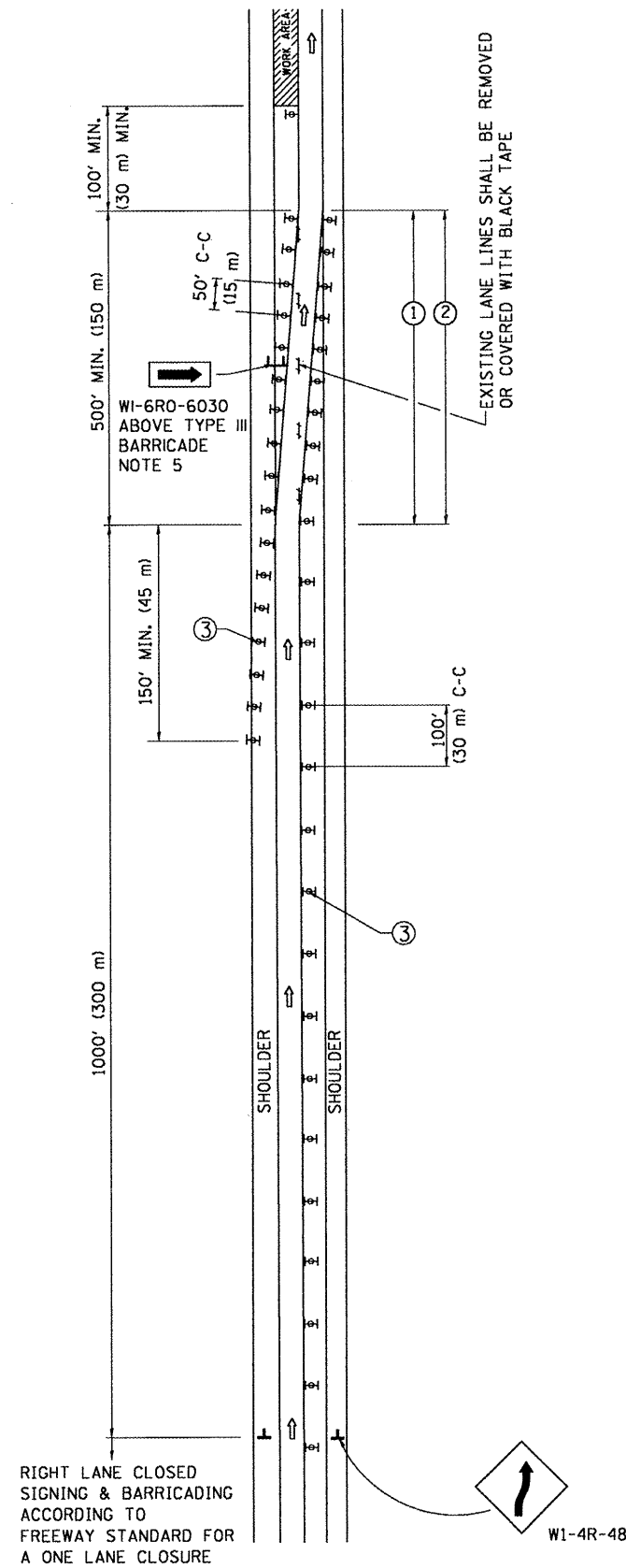
GENERAL NOTES:

1. CONES MAY BE SUBSTITUTED FOR DRUMS OR TYPE II BARRICADES DURING DAY OPERATIONS. CONES SHALL BE A MINIMUM OF 28 (700) HIGH.
2. STEADY BURN LIGHTS WILL NOT BE REQUIRED FOR DAY OPERATIONS.
3. A FLAGGER SHALL BE POSITIONED AT EACH CLOSED RAMP THAT IS OPEN TO CONSTRUCTION VEHICLES.
4. ALL ROUTE MARKERS AND TRAILBLAZER ASSEMBLIES WHICH DIRECT MOTORISTS TO A CLOSED ENTRANCE RAMP SHALL BE COVERED.
5. THE SIGNING AND BARRICADING WHICH IS REQUIRED BY THIS DETAIL SHALL BE INCLUDED IN THE COST OF TRAFFIC CONTROL AND PROTECTION (EXPRESSWAYS).
6. AUTHORIZATION FROM THE DISTRICT'S BUREAU OF TRAFFIC IS REQUIRED FOR ALL RAMP CLOSURES.
7. THE RAMP CLOSURE ADVANCE INFORMATION SIGNS SHALL BE ERECTED IF THE CLOSURE TIME EXCEEDS TWENTY-FOUR (24) HOURS. ADDITIONAL ADVANCE WARNING SIGNS ON EXIT GUIDE SIGNING WILL BE REQUIRED FOR EXIT RAMP CLOSURES THAT EXCEED TWENTY-FOUR (24) HOURS IN LENGTH.

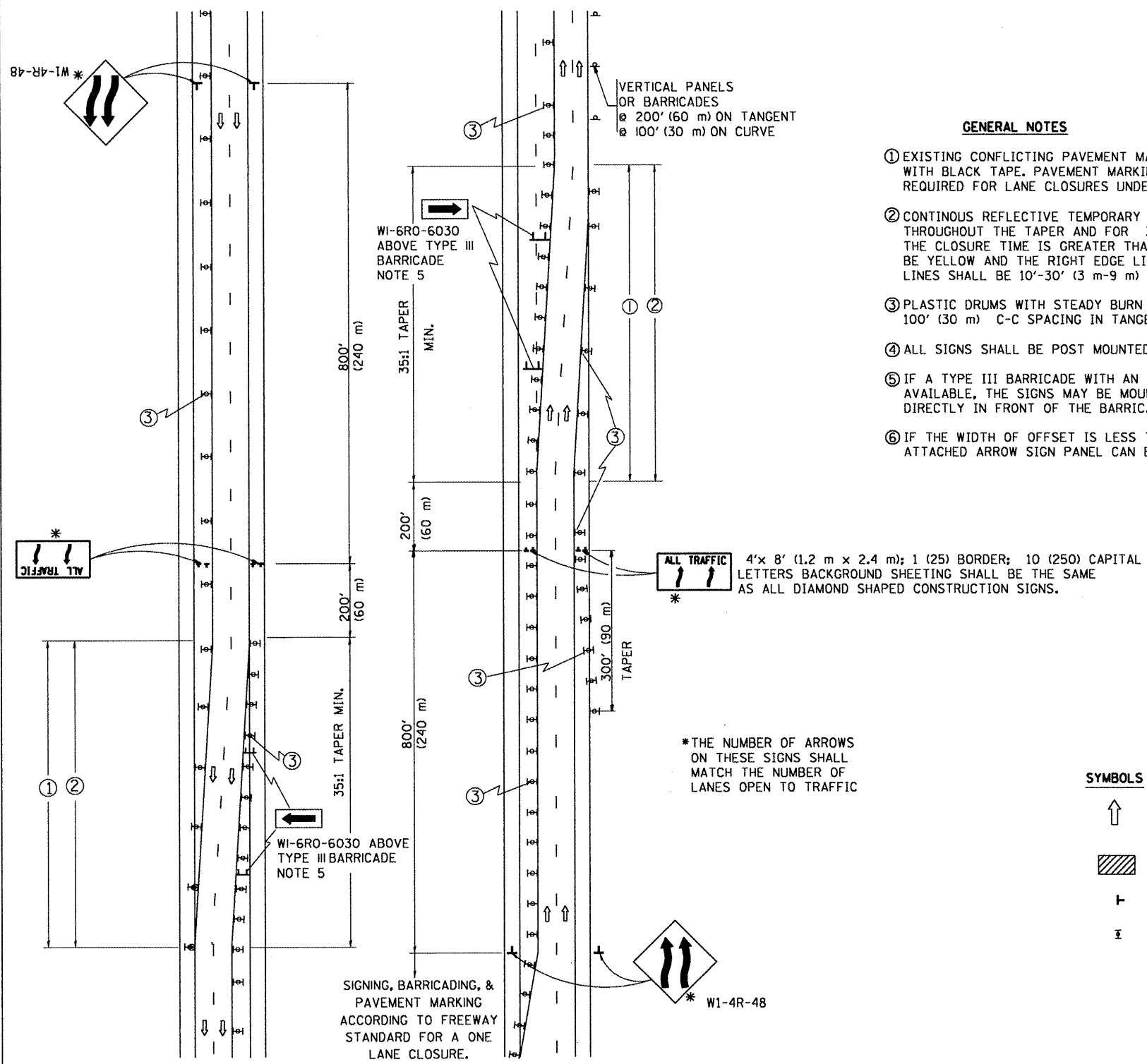
ALL DIMENSIONS ARE IN INCHES (MILLIMETERS) UNLESS OTHERWISE SHOWN.

FILE NAME =	USER NAME = wilgreendp	DESIGNED - DWS	REVISED - DWS 12-94	STATE OF ILLINOIS DEPARTMENT OF TRANSPORTATION	FREWAY ENTRANCE AND EXIST RAMP CLOSURE DETAILS		F.A. RTE.	SECTION	COUNTY	TOTAL SHEETS	SHEET NO.
ct:\pw_work\PW1DDT\WILGREENDP\0125109\01	st5std.dgn	DRAWN -	REVISED - DWS/JAF 12-02		SCALE: NONE	SHEET NO. 1 OF 1 SHEETS	STA.	VAR. 2009-027 PP	COOK	20	16
PLOT SCALE = 100.0000 / IN.		CHECKED -	REVISED - JAF 02-06					TC-08	CONTRACT NO. 60626		
PLOT DATE = 3/14/2009		DATE - 02-83	REVISED - SPB 01-07					FED. ROAD DIST. NO. 1	ILLINOIS	FED. AID PROJECT	

SINGLE LANE WEAVE



MULTI-LANE WEAVE



GENERAL NOTES

- ① EXISTING CONFLICTING PAVEMENT MARKING LINES SHALL BE REMOVED OR COVERED WITH BLACK TAPE. PAVEMENT MARKING REMOVAL OR BLACK TAPE SHALL NOT BE REQUIRED FOR LANE CLOSURES UNDER 24 HOURS IN DURATION.
- ② CONTINUOUS REFLECTIVE TEMPORARY PAVEMENT MARKING TAPE SHALL BE PLACED THROUGHOUT THE TAPER AND FOR 300' (90 m) ALONG SIDE THE WORK AREA WHERE THE CLOSURE TIME IS GREATER THAN FOURTEEN DAYS. THE LEFT EDGE LINE SHALL BE YELLOW AND THE RIGHT EDGE LINE SHALL BE WHITE. FOR MULTI-LANE WEAVE LANE LINES SHALL BE 10'-30' (3 m-9 m) SKIP DASH, WHITE.
- ③ PLASTIC DRUMS WITH STEADY BURN LIGHTS AT 50' (15 m) C-C SPACING IN TAPERS AND 100' (30 m) C-C SPACING IN TANGENTS.
- ④ ALL SIGNS SHALL BE POST MOUNTED IF THE CLOSURE TIME EXCEEDS FOUR DAYS.
- ⑤ IF A TYPE III BARRICADE WITH AN ATTACHED SIGN PANEL WHICH MEETS NCHRP 350 IS NOT AVAILABLE, THE SIGNS MAY BE MOUNTED ON NCHRP 350 TEMPORARY SIGN SUPPORTS DIRECTLY IN FRONT OF THE BARRICADE.
- ⑥ IF THE WIDTH OF OFFSET IS LESS THAN 6' THEN THE TYPE III BARRICADE WITH ATTACHED ARROW SIGN PANEL CAN BE ELIMINATED IN THE TAPER AREAS.

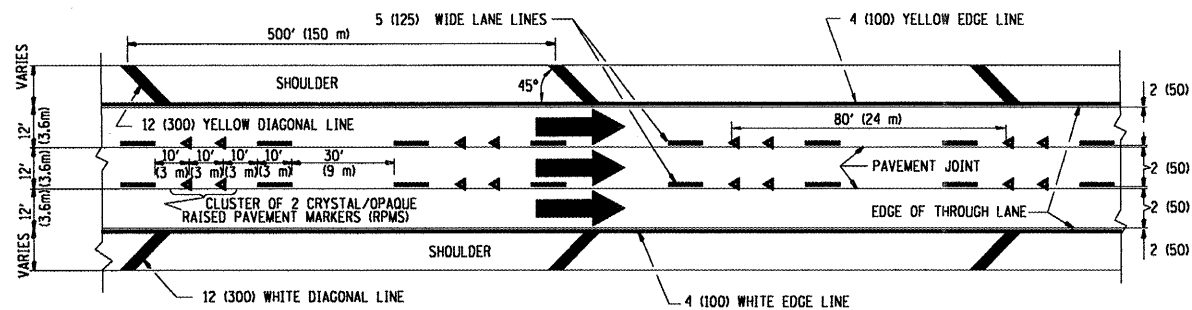
SYMBOLS

- ↑ DIRECTION OF TRAFFIC
- ▨ WORK AREA
- ┆ SIGN ON PORTABLE OR PERMANENT SUPPORT
- ⊞ TYPE II BARRICADE, DRUM OR VERTICAL BARRICADE WITH MONO-DIRECTIONAL STEADY BURNING LIGHT

ALL DIMENSIONS ARE IN INCHES (MILLIMETERS) UNLESS OTHERWISE SHOWN

FILE NAME =	USER NAME = wilgreendp	DESIGNED - DWS	REVISED - DWS 11-96	STATE OF ILLINOIS DEPARTMENT OF TRANSPORTATION	TRAFFIC CONTROL DETAILS FOR FREEWAY SINGLE & MULTI-LANE WEAVE	F.A. RTE. =	SECTION	COUNTY	TOTAL SHEETS	SHEET NO.
ct:\pw\work\PW1001\WILGREENDP\d125189\0	atStd.dgn	DRAWN -	REVISED - JAF 01-03			VAR 2009-027 PP	COOK+WILL	20	17	
PLOT SCALE = 1/8" = 1' IN.	CHECKED -	REVISED - JAF 02-06	REVISED - SPB 01-07			TC-09	CONTRACT NO. 60626			
PLOT DATE = 3/14/2009	DATE - 02-87	SCALE: NONE	SHEET NO. 1 OF 1 SHEETS			STA.	TO STA.	FED. ROAD DIST. NO. 1 ILLINOIS FED. AID PROJECT		

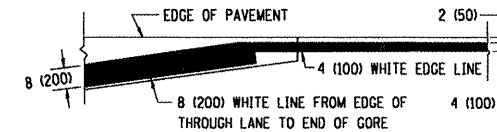
THE DIAGONAL LINES SHALL BE SPACED AT 40' (12 m) C-C ACROSS ALL STRUCTURES WHICH ARE 500' (150 m) OR LESS IN LENGTH
THE DIAGONAL LINES ARE NOT REQUIRED ON SHOULDERS WHICH ARE 6' (1.8 m) OR LESS IN WIDTH



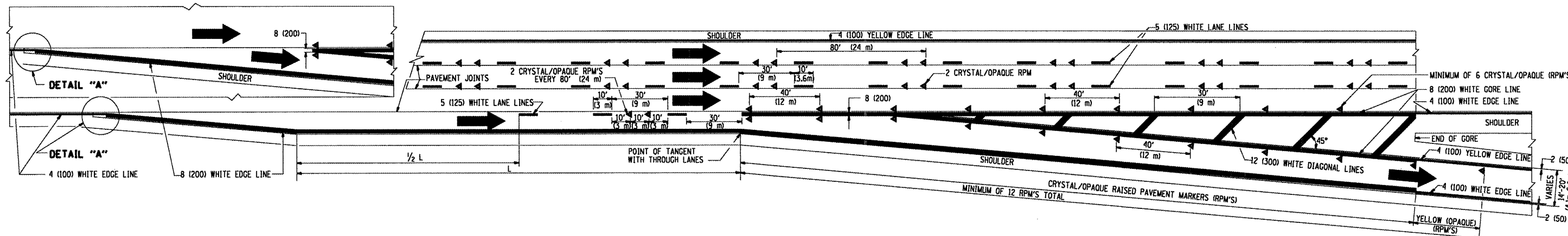
TYPICAL EDGE LINES & LANE LINES

NOTES:

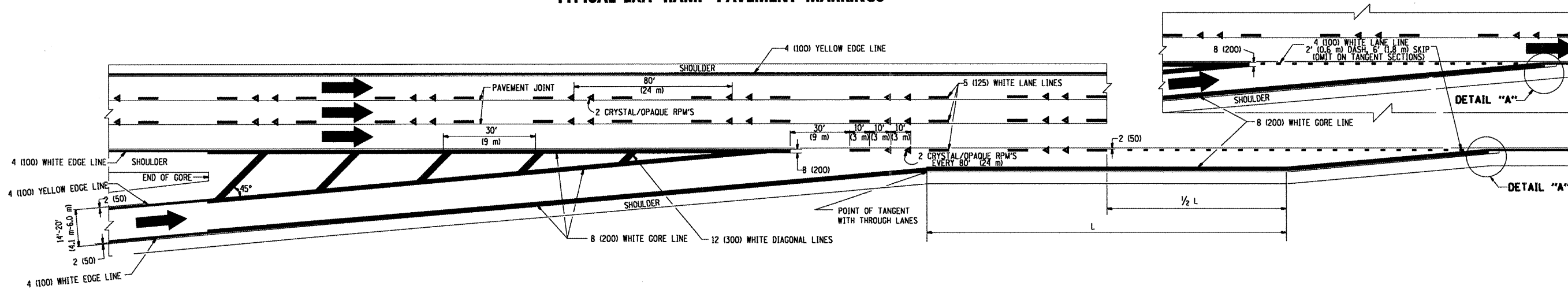
1. THERMO PLASTIC PAVEMENT MARKING LINE SHALL BE USED FOR THE EDGE LINES, GORE LINES, AND DIAGONAL LINES ON BITUMINOUS PAVEMENT ONLY.
2. PREFORMED PLASTIC TYPE B PAVEMENT MARKING LINE SHALL BE USED FOR ALL LANE LINES ON BITUMINOUS PAVEMENT
3. POLYUREA PAVEMENT MARKING SHALL BE USED FOR ALL MARKINGS ON PCC



DETAIL "A"

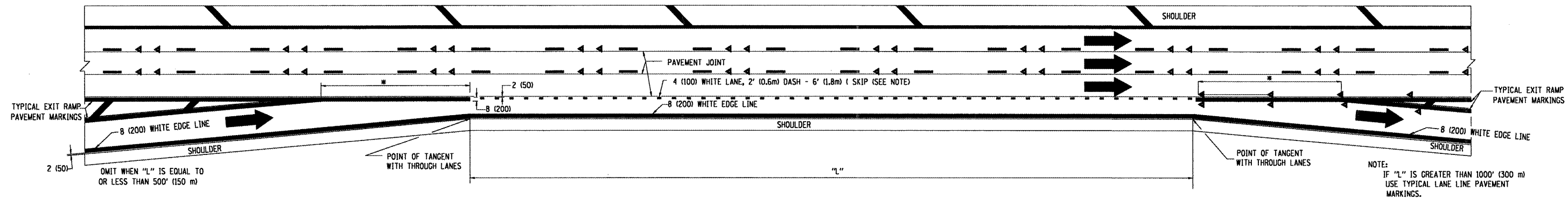


TYPICAL EXIT RAMP PAVEMENT MARKINGS

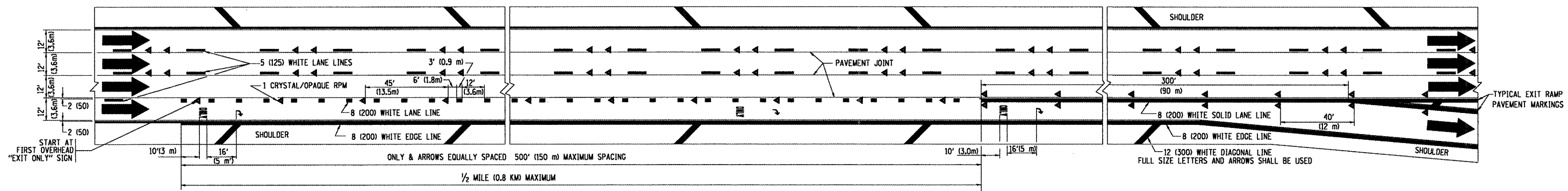


TYPICAL ENTRANCE RAMP PAVEMENT MARKINGS

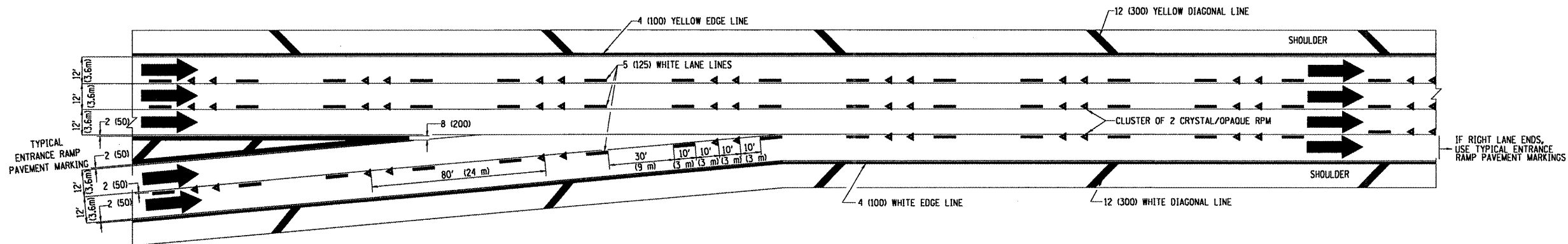
FILE NAME =	USER NAME = wilgreendp	DESIGNED - D.W.S.	REVISED - A.H. 03-96	STATE OF ILLINOIS DEPARTMENT OF TRANSPORTATION	MULTI-LANE FREEWAY PAVEMENT MARKING DETAILS		F.A. RTE.	SECTION	COUNTY	TOTAL SHEETS	SHEET NO.	
at\pw\work\PW1001\WILGREENDP\08125109\0	st5td.dgn	DRAWN -	REVISED - D.W.S. 07-96		SCALE: NONE	SHEET NO. 1 OF 2 SHEETS	STA.	VAR. 2009-027 PP	cook	will	20	18
	PLOT SCALE = 100.0000 / IN.	CHECKED -	REVISED - J.A.F. 02-06				TO STA.	TC-12				
	PLOT DATE = 3/14/2009	DATE - 01-90	REVISED - S.P.B. 01-07					FED. ROAD DIST. NO. 1 [ILLINOIS] FED. AID PROJECT				CONTRACT NO. 60526



TYPICAL ENTRANCE/EXIT RAMP COMBINATION PAVEMENT MARKINGS



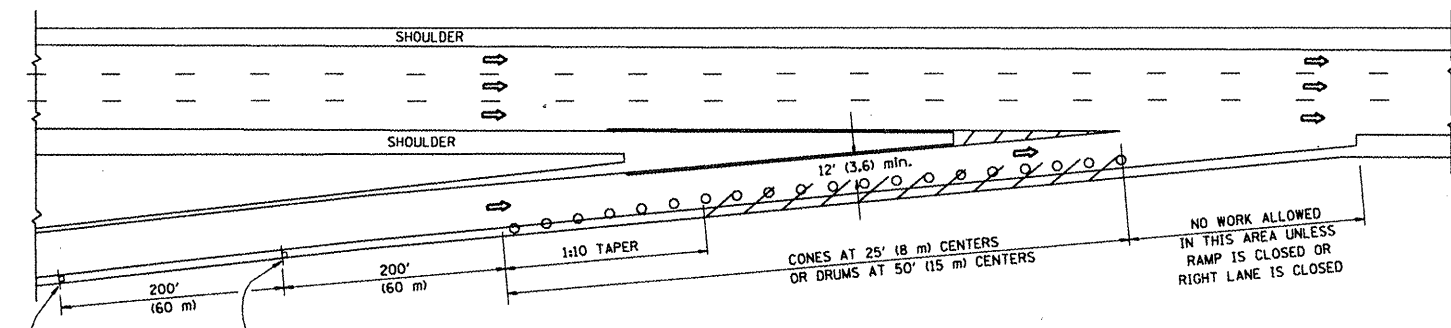
TYPICAL EXIT ONLY LANE PAVEMENT MARKINGS



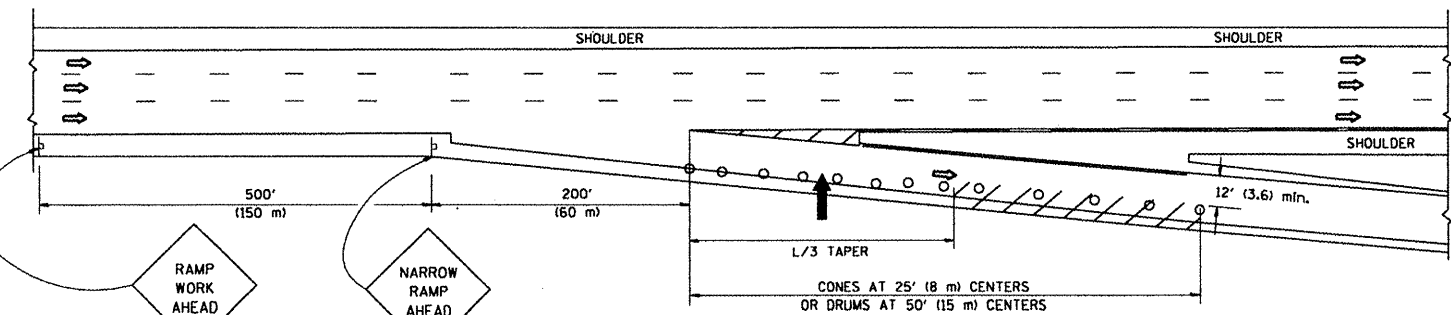
TYPICAL TWO LANE ENTRANCE RAMP PAVEMENT MARKINGS

FILE NAME =	USER NAME = wilgreendp	DESIGNED - D.W.S.	REVISED - A.H. 03-96	STATE OF ILLINOIS DEPARTMENT OF TRANSPORTATION	MULTI-LANE FREEWAY PAVEMENT MARKING DETAILS			F.A. -	SECTION	COUNTY	TOTAL SHEETS	SHEET NO.	
at\pwork\PWIDDT\WILGREENDP\01251099.D	at5td.dgn	DRAWN -	REVISED - D.W.S. 07-96		SCALE: NONE	SHEET NO. 2 OF 2 SHEETS	STA.	TO STA.	MAR 2009-027 PP	COOK	20	19	
		PLOT SCALE = 1/8" = 1'-0"	CHECKED - J.A.F. 02-06						TC-12				
		PLOT DATE = 3/14/2009	DATE - 01-90		REVISED - S.P.B. 01-07				FED. ROAD DIST. NO. 1	ILLINOIS	FED. AID PROJECT		

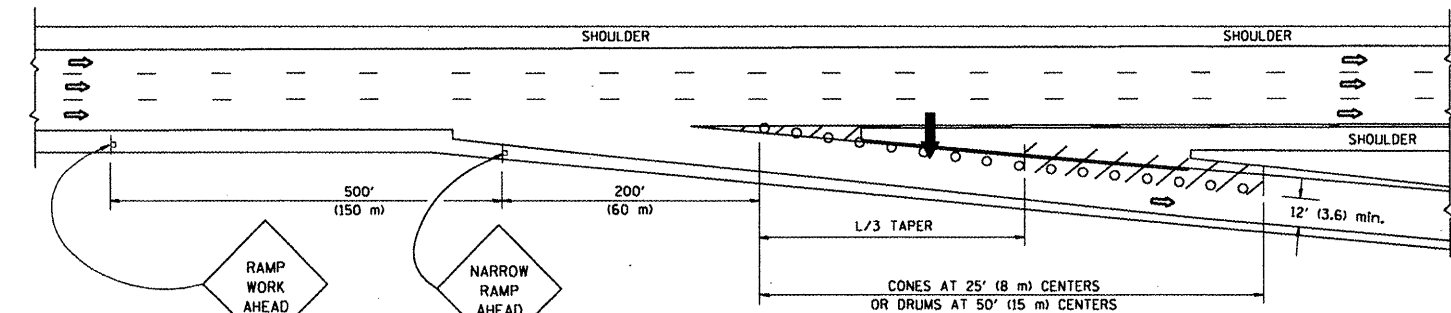
PARTIAL RAMP CLOSURE DETAILS



TYPICAL ENTRANCE RAMP



TYPICAL EXIT RAMP



TYPICAL EXIT RAMP

SYMBOLS

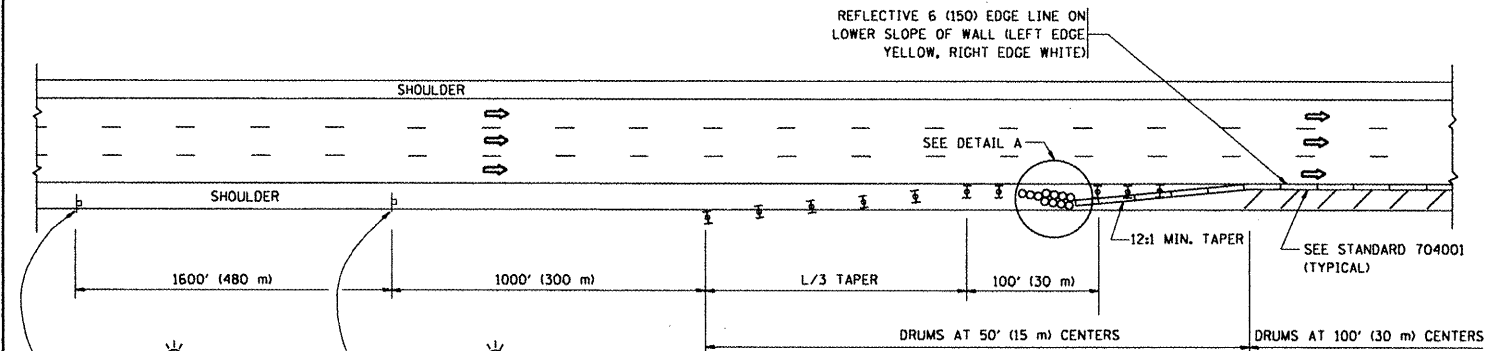
- ➔ ARROWBOARD
- ▨ WORK AREA
- ⊥ SIGN ON PORTABLE OR PERMANENT SUPPORT
- FLAGGER WITH CONTROL SIGN
- ⊥ TYPE II BARRICADE, DRUM OR VERTICAL BARRICADE WITH STEADY BURN MONO-DIRECTIONAL LIGHT
- CONE, DRUM OR BARRICADE

GENERAL NOTES

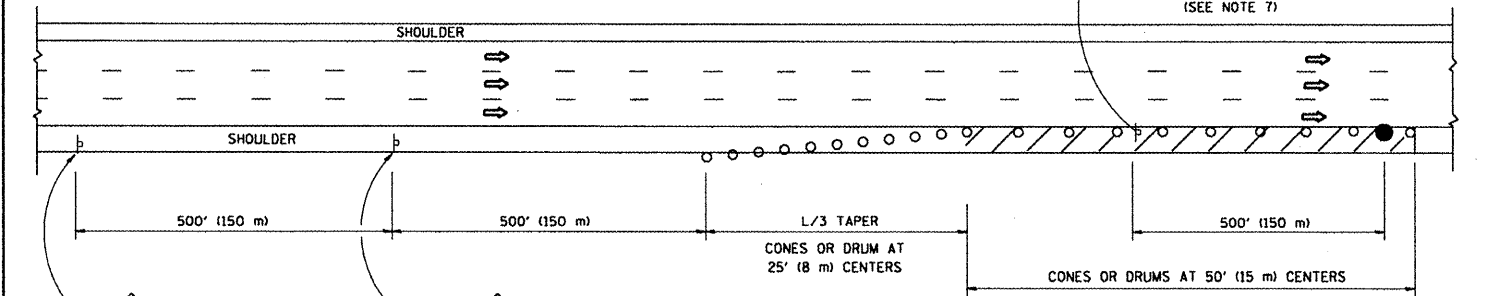
1. THE "L" DISTANCE EQUALS:

SPEED LIMIT	FORMULAS
45 mph (80 km/h) OR GREATER:	METRIC ENGLISH L=0.65(W/S) L=(W/S)
W = WIDTH OF OFFSET IN FEET (METERS)	
S = NORMAL POSTED SPEED MPH (KM/H)	
2. PLASTIC DRUMS WITH HIGH PERFORMANCE REFLECTIVE SHEETING AND STEADY BURNING LIGHTS ARE REQUIRED FOR ALL NIGHTTIME CLOSURES.
3. ALL SIGNS SHALL BE POST MOUNTED IF THE CLOSURE TIME EXCEEDS FOUR DAYS.
4. FLASHING LIGHTS SHALL BE USED DURING THE HOURS OF DARKNESS AND SHALL BE INSTALLED ABOVE THE FIRST TWO SETS OF SIGNS.

SHOULDER CLOSURE DETAILS



PERMANENT SHOULDER CLOSURE



DAYTIME SHOULDER CLOSURE

THIS DETAIL IS USED WHERE:
 1. VEHICLES, EQUIPMENT, WORKERS OR THEIR ACTIVITIES ENCR OACH IN AN AREA CLOSER THAN 15' (4.5 m) TO THE EDGE OF PAVEMENT FOR A PERIOD IN EXCESS OF 15 MINUTES.

ARRAY DESIGN PER MANUFACTURER TO BE NCHRP 350 COMPLIANT FOR POSTED SPEED.

DETAIL "A"
 IMPACT ATTENUATOR, TEMPORARY
 (SEE NOTE 5)

ALL DIMENSIONS ARE IN INCHES (MILLIMETERS) UNLESS OTHERWISE SHOWN.

FILE NAME =	USER NAME = wilgreendp	DESIGNED -	REVISED - J.A.F. 12-02
c:\pwork\PWIDDT\WILGREENDP\08125109\0	st5td.dgn	DRAWN - D.W.S.	REVISED - 04-03
PLOT SCALE = 100.0000 / IN.	CHECKED -	REVISED - J.A.F. 12-06	
PLOT DATE = 3/14/2009	DATE - 11-96	REVISED - S.P.B. 01-07	

STATE OF ILLINOIS
 DEPARTMENT OF TRANSPORTATION

TRAFFIC CONTROL DETAILS FOR FREEWAY	
SHOULDER CLOSURES AND PARTIAL RAMP CLOSURES	
SCALE: NONE	SHEET NO. 1 OF 1 SHEETS STA. TO STA.

F.A. RTE.	SECTION	COUNTY	TOTAL SHEETS	SHEET NO.
VAR.	2009-027 PP	COOK+WA	20	20
CONTRACT NO. 60326			TC-17	
FED. ROAD DIST. NO. 1 (ILLINOIS) FED. AID PROJECT				