

D-91-364-09

GENERAL NOTES:

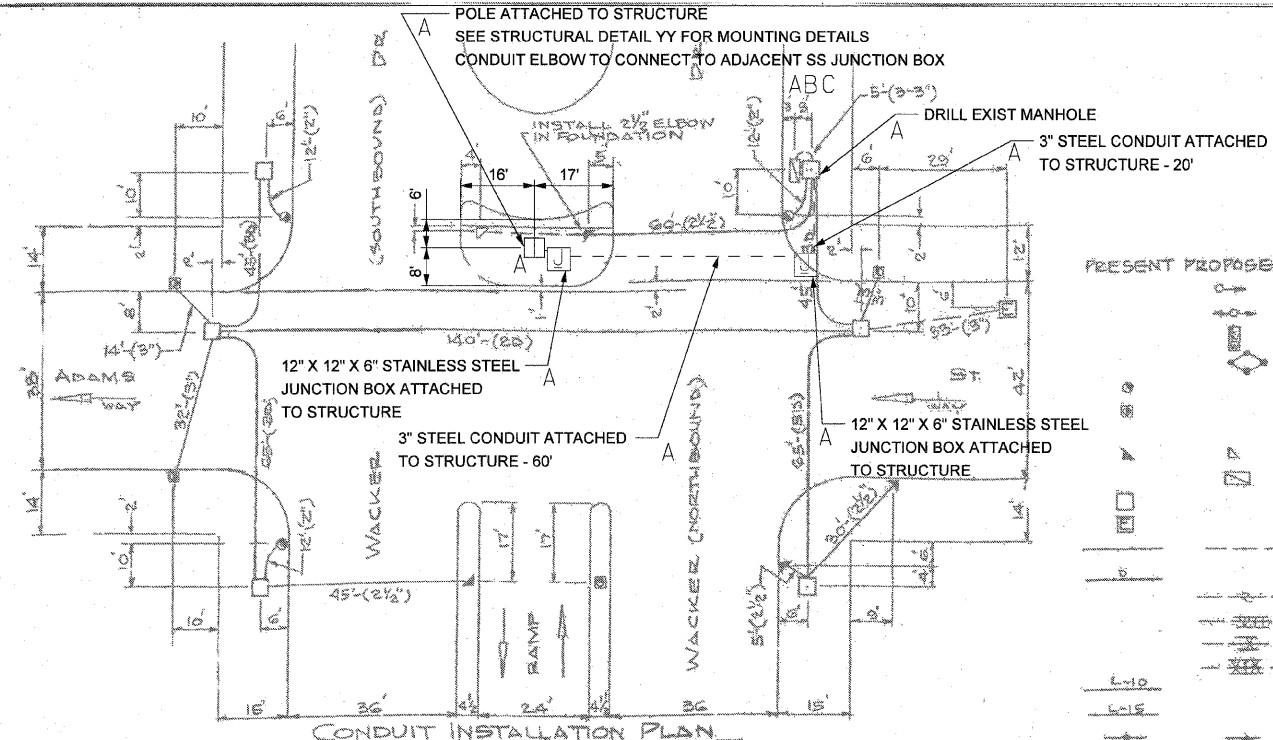
1. TRAFFIC SIGNAL CONTRACTOR SHALL CONTACT BOE INSPECTION SERVICES AT 312-746-5048 FOR A WALK THROUGH PRIOR TO STARTING ANY ELECTRICAL CONSTRUCTION
2. CONTRACTOR SHALL CONTACT UTILITIES FOR LOCATE PRIOR TO WORK.
3. ALL FOUNDATIONS IN CONCRETE SIDEWALK TO BE INSTALLED PER B.O.E. DRAWING #828.
4. SEE B.O.E. DRAWING #826 FOR CODE.
5. SEE STANDARD DRAWINGS FOR MOUNTING DETAILS.
6. ALL SIGNAL SECTIONS TO BE STANDARD 12" SIZE L.E.D.. TYPE.
7. ALL VEHICULAR SIGNALS TO BE 3 SECTION, UNLESS OTHERWISE NOTED.
8. PEDESTRIAN SIGNALS TO BE 2 SECTION WITH I.T.E. SYMBOLIC LENSES L.E.D. TYPE AND COUNT DOWN DISPLAY
9. PEDESTRIAN SIGNALS TO BE MOUNTED BELOW VEHICULAR SIGNALS.
10. ALL MAST ARMS TO BE STEEL MONOTUBE TYPE, SIZE AS NOTED.
11. TRAFFIC SIGNAL EQUIPMENT SHALL BE PAINTED BLACK.

CONSTRUCTION NOTES:

- A - 3-27-09-MODIFICATIONS TO 5-24-74 PLANS SET
- B - MODIFY EXISTING CONTROLLER
- C - INSTALL VIDEO DETECTION SYSTEM WITH RACK MOUNT
- D - INSTALL VIDEO DETECTION CAMERA TO VERTICAL POLE

REMOVAL NOTES:

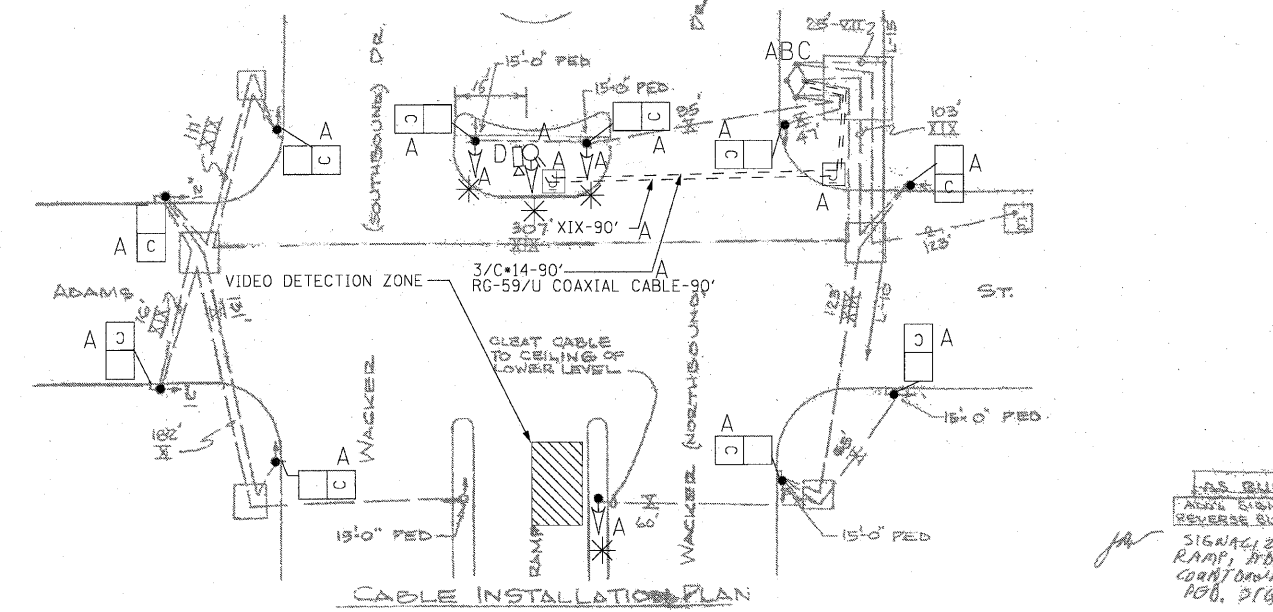
- E - REMOVE TRAFFIC SIGNAL HEAD
- F - REMOVE PEDESTRIAN SIGNAL HEAD



PRESENT PROPOSED

CODE

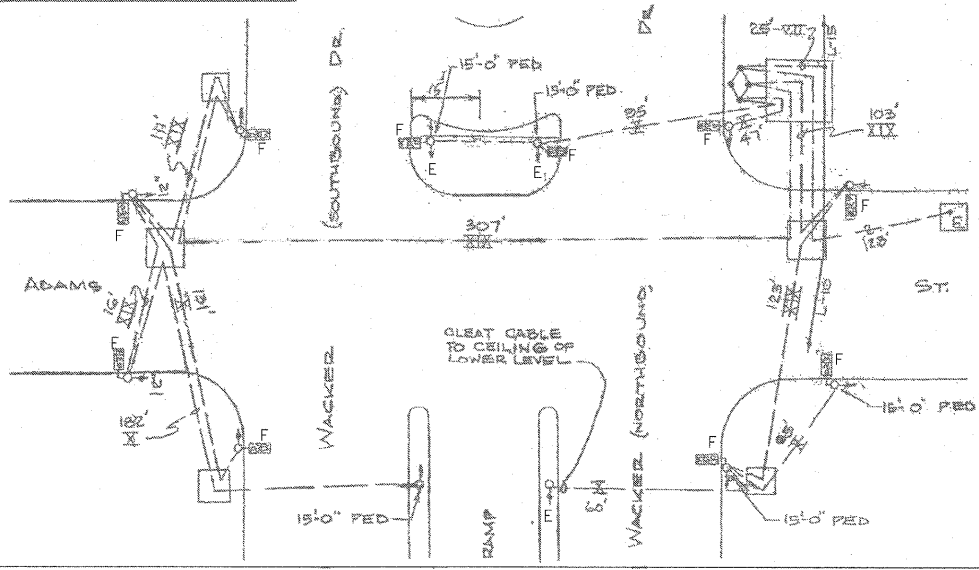
- TRAFFIC SIGNAL - HWAY ADJ - 8" OR AS NOTED
- TRAFFIC SIGNAL - 2-WAY ADJUSTABLE - 8"
- SIGNAL, WALK/DONT WALK - 2 SEC. SIZE AS NOTED
- CONTROLLER, TRAFFIC SIGNAL - BASE MTD. CABINET
- POLE, DAVIT
- POLE 2 1/2" - 7GA. ANCHOR BASE W/ BALL HEG. BASE & FOUNDATION
- FOUNDATION, TRAFFIC SIGNAL
- FOUNDATION, T.S. CONTROLLER - SPECIAL
- MANHOLE, CITY
- MANHOLE, COMMONWEALTH EDISON CO.
- CONDUIT, RIGID GALV. STEEL - SIZE AS NOTED
- CONDUIT, MULT. DUCT - NO. OF DUCTS AS NOTED
- CABLE, 1/2" #6, 600V. NED. IN CONDUIT
- CABLE, 7/8" #10, 600V. NED. IN CONDUIT
- CABLE, 1" (#10 & #14), 600V. NED. IN CONDUIT
- CABLE, 1 1/2" (#10 & #14), 600V. NED. IN CONDUIT
- CABLE, INTERCONNECT - 1 1/2" #10
- SPLICE



CBD. COMPUTER SYSTEM
 COMM. CABLE DES # 22935 SW
 DETECTOR DES # 22944

REVISION		CITY OF CHICAGO	
DEPT. OF STREETS AND SANITATION		BUREAU OF ELECTRICITY	
DIVISION OF ELECTRICAL ENGINEERING		ENGINEER	
AS BUILT	A 12-26-74	DESIGNED BY	J. ROWE D.C./M.S.
ADJ. SIGNALS REVERSE BUS LANE	B 5-18-80	DRAWN BY	Charles E. Bandy
SIGNALIZE RAMP, ADD COUNTDOWN	C 2-4-2009	CHECKED BY	Charles E. Bandy
POB. 576/AMES		SCALE	1" = 25'
		DATE	5-24-74

SIGNAL AND CABLE REMOVAL PLAN
 SCALE: NTS



DATE		REVISION	
CITY OF CHICAGO			
DEPARTMENT OF TRANSPORTATION DIVISION OF ENGINEERING			
CONSULTANT:		RWA Rogers Wacker & Associates, Inc.	
WORK ORDER NO.	00000000	DATE	
COST ALLOCATION ACCOUNT			
APPROPRIATION ACCOUNT		MATERIAL	
		LABOR	
SUPERSEDES DWG# 12169 DATED 5-24-74 TRAFFIC CONTROL SIGNALS WACKER DRIVE AND ADAMS STREET			
CITY OF CHICAGO DEPT. OF STREETS AND SANITATION BUREAU OF ELECTRICITY DIVISION OF ELECTRICAL ENGINEERING			
DRAFTSMAN:	T.F.	CHIEF DRAFTSMAN:	J.K.
ENGINEER:	J.S.		
SUPERVISING ENGINEER:	ELEC. DESIGN ENGR.		
ENGINEER OF ELECTRICITY:		DWG. NO.	12169
GEN'L SUPT. OF ELECTRICITY:			
DEPUTY COMMISSIONER:			
SIZE: 22" 36"	SCALE:	DATE: 3/27/09	SHEET NO.:
DATE: 3/27/09			
C.D.O.T. PROJECT NO.: XXXXXX			

DATE: \$TIME: \$FILE: \$