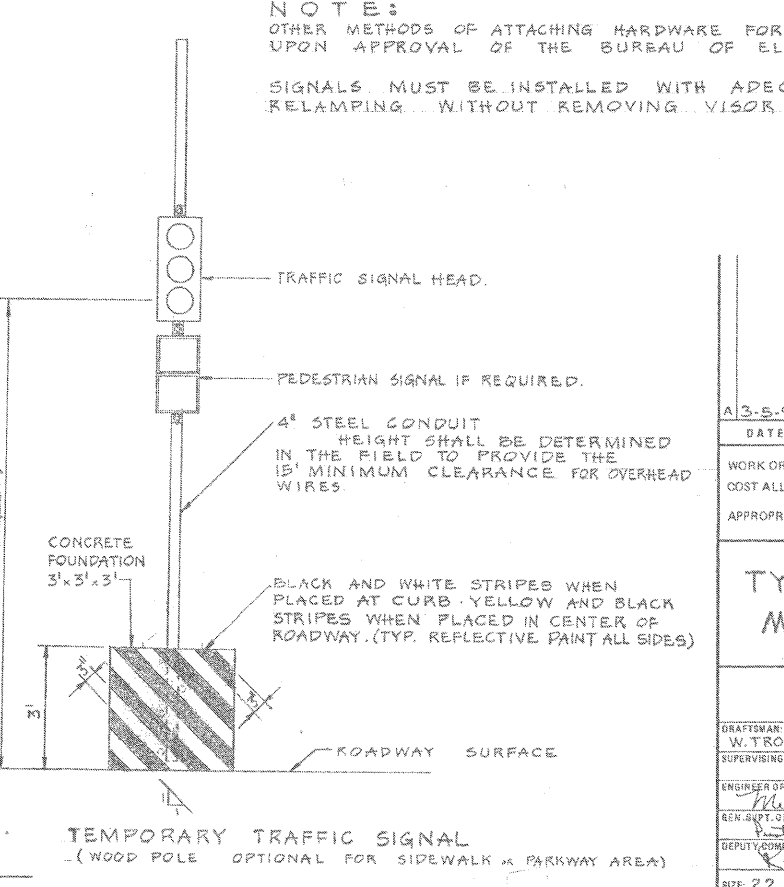
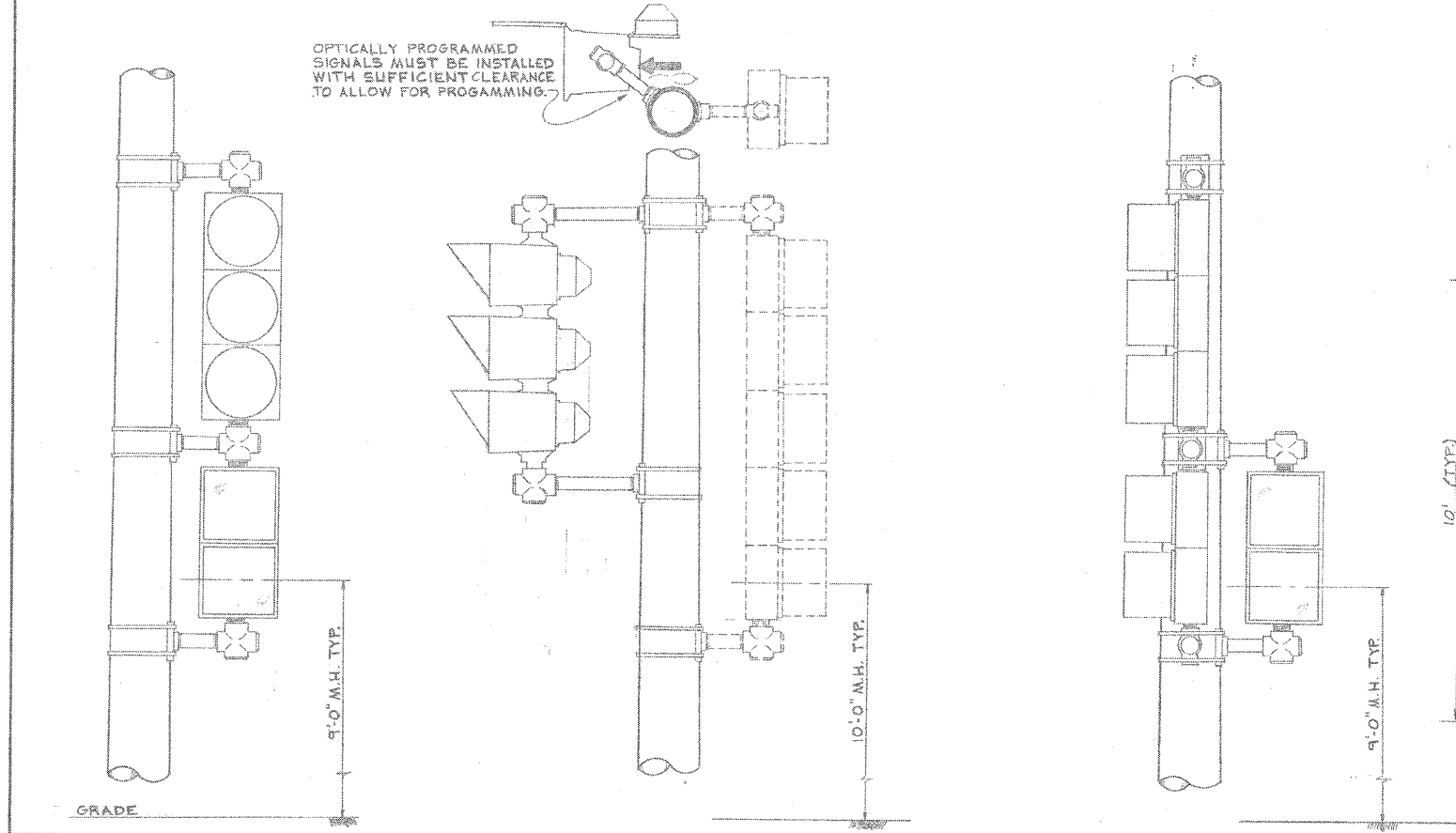
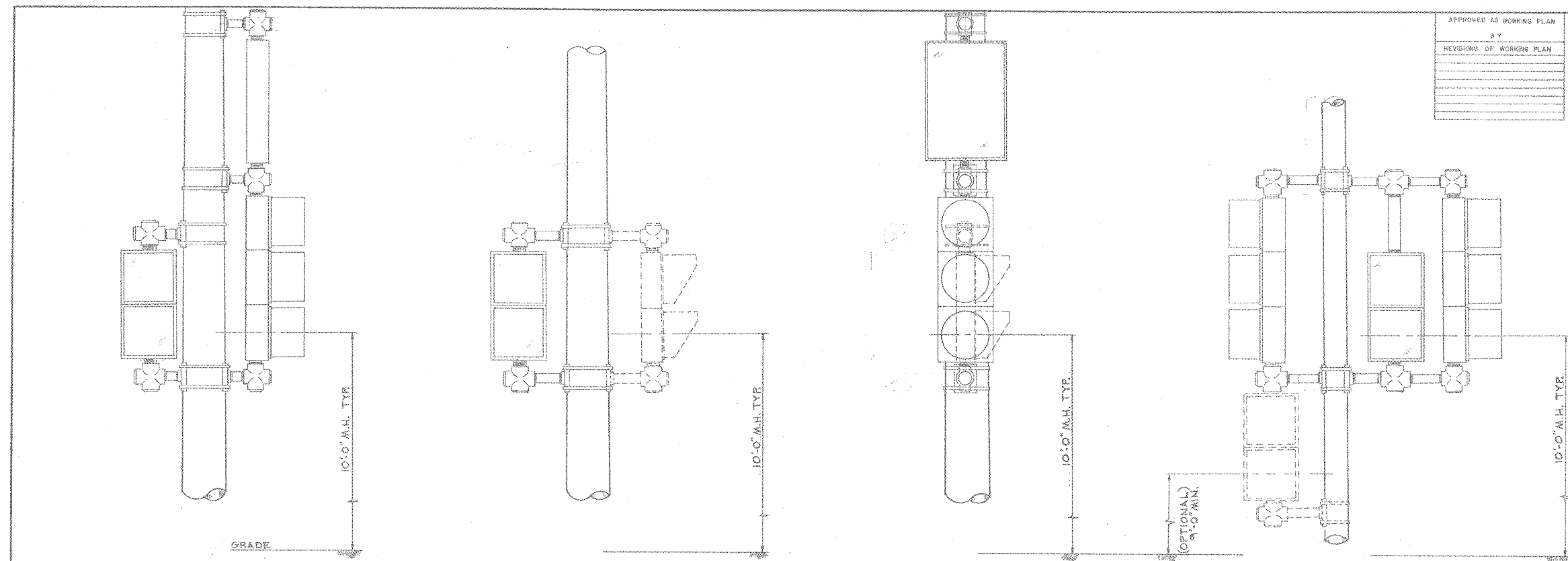


RWA
Regina Webster & Associates, Inc.
REGINA WEBSTER AND ASSOC. INC.
CIVIL ENGINEERING CONSULTANTS
6160 North Cicero Avenue, Suite 500
Chicago, Illinois 60631-1669



NOTE:
OTHER METHODS OF ATTACHING HARDWARE FOR SIGNAL HEADS MAY BE USED UPON APPROVAL OF THE BUREAU OF ELECTRICITY.
SIGNALS MUST BE INSTALLED WITH ADEQUATE CLEARANCE FOR RELAMPING WITHOUT REMOVING VISOR OR ROTATING SIGNAL.

APPROVED AS WORKING PLAN	BY
REVISIONS OF WORKING PLAN	

FEDERAL-AID ROUTE NO.	SECTION	COUNTY	TOTAL SHEETS	SHEET NO.
FHWA REG. NO.	ILLINOIS PROJECT			

A 3-5-93 ADDED TEMP. SIGNAL DETAIL	
DATE	REVISION
WORK ORDER NO.	DATE
COST ALLOCATION ACCOUNT	
APPROPRIATION ACCOUNT	MATERIAL
	LABOR

TYPICAL TRAFFIC SIGNAL MOUNTING DETAILS

CITY OF CHICAGO DEPT. OF STREETS AND SANITATION BUREAU OF ELECTRICITY DIVISION OF ELECTRICAL ENGINEERING		
DRAFTSMAN: W. TROAPKA	CHIEF DRAFTSMAN: R. S.	ENGINEER: M. DeBARTOLO
SUPERVISING ENGINEER: R. M.	ELECTRICAL ENGR. R. M.	DWG. NO. 835
ENGINEER OF ELECTRICITY: M. J. Shive	GEN. Supt. of ELECTRICITY: R. J. Shive	DATE: 12-10-94
DEPUTY COMMISSIONER: R. J. Shive	SCALE: NONE	

FILE NAME =	USER NAME = USER4	DESIGNED = JS	REVISED
#FILE#		DRAWN = DW	REVISED
		CHECKED = JD	REVISED
		DATE = 03/27/09	REVISED

**STATE OF ILLINOIS
DEPARTMENT OF TRANSPORTATION**

**BUREAU OF ELECTRICITY STANDARD DETAILS
TRAFFIC SIGNAL IMPROVEMENT PLAN**

SCALE: NONE SHEET NO. 12 OF 13 SHEETS STA. TO STA.

F.A.P. RTE.	SECTION	COUNTY	TOTAL SHEETS	SHEET NO.
389	2009-031-TS	COOK	13	12
CONTRACT NO. 60G31				
FED. ROAD DIST. NO. [ILLINOIS] FED. AID PROJECT				